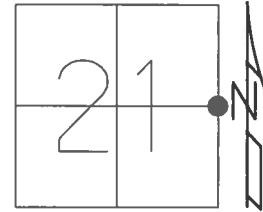


O.D.O.T. DISTRICT 2 SURVEY OFFICE (USE ONLY)

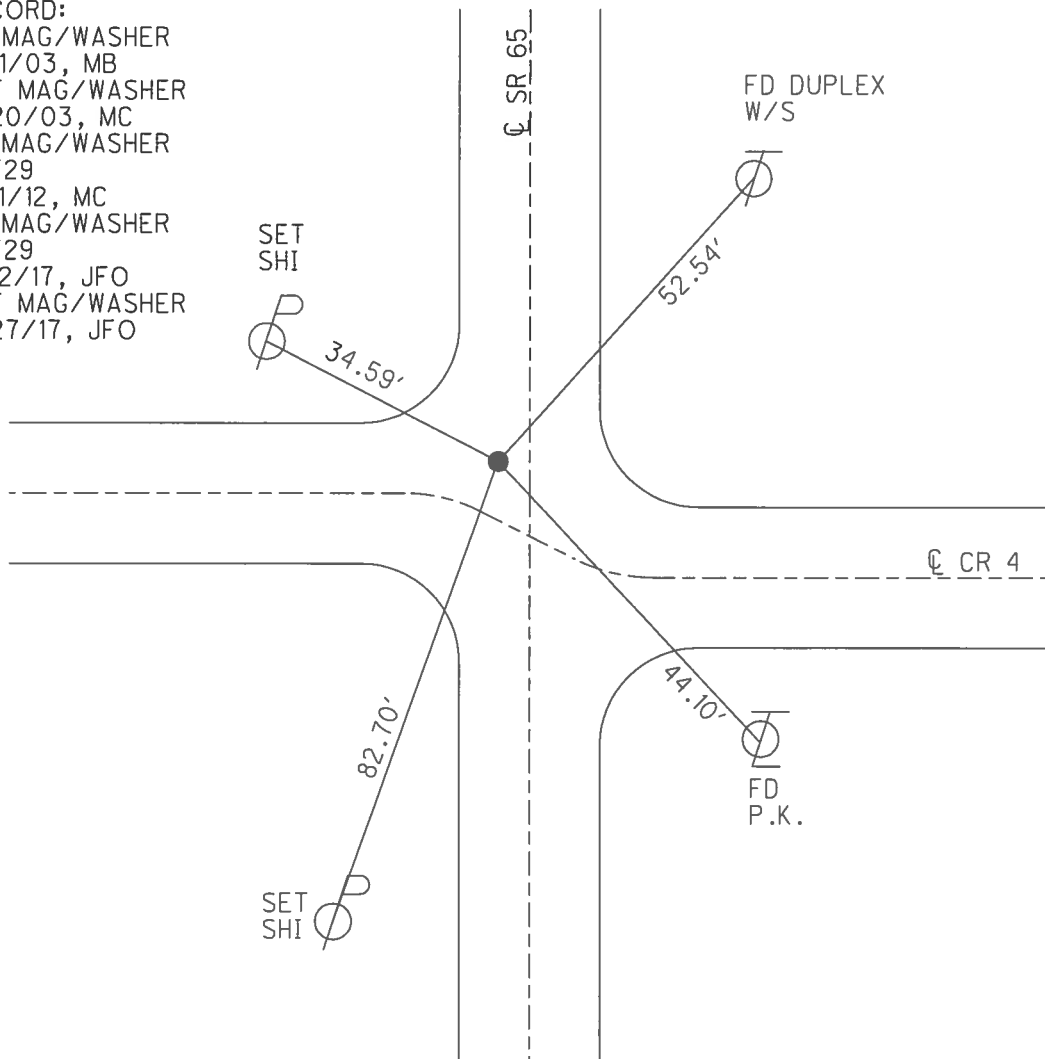
PERSONNEL _____ REFERENCE NO. 29 SHEET 37 OF 42
 NOTES RHOADES DATE 5/9/17 ROUTE SR 65
 H.C. O'DONNELL WEATHER SUNNY COUNTY HENRY
 R.C. RHOADES TEMP. 58° TOWNSHIP DAMASCUS
 SECTION 21
 T 5 N R 8 E

TYPE MONUMENT MAG/WASHER
 ON SURFACE - ~~BELOW~~ ON _____
 LEFT - ☉ PAV'T - ~~RIGHT~~ 3.5', 3.5' N. OF ☉ W.
5.5' TO LT EDGE PAVEMENT
 S.L.M. 769+38



GRID: NORTHING: 627010.487 EASTING: 1572942.164

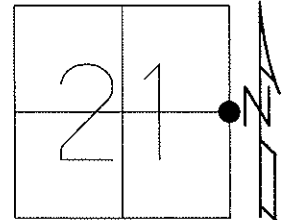
RECORD:
 FD MAG/WASHER
 4/11/03, MB
 SET MAG/WASHER
 5/20/03, MC
 FD MAG/WASHER
 REF 29
 7/11/12, MC
 FD MAG/WASHER
 REF 29
 5/12/17, JFO
 SET MAG/WASHER
 9/27/17, JFO



O.D.O.T. DISTRICT 2 SURVEY OFFICE (USE ONLY)

PERSONNEL	REFERENCE NO. <u>29</u>	SHEET <u>37</u> OF <u>42</u>
NOTES <u>BRUMBAUGH</u>	DATE <u>4/11/03</u>	ROUTE <u>SR 65</u>
H.C. <u>BARNHESEL</u>	WEATHER <u>SUNNY</u>	COUNTY <u>HENRY</u>
R.C. <u>GLASS</u>	TEMP. <u>55°</u>	TOWNSHIP <u>DAMASCUS</u>
		SECTION <u>21</u>
		T <u>5</u> N R <u>8</u> E

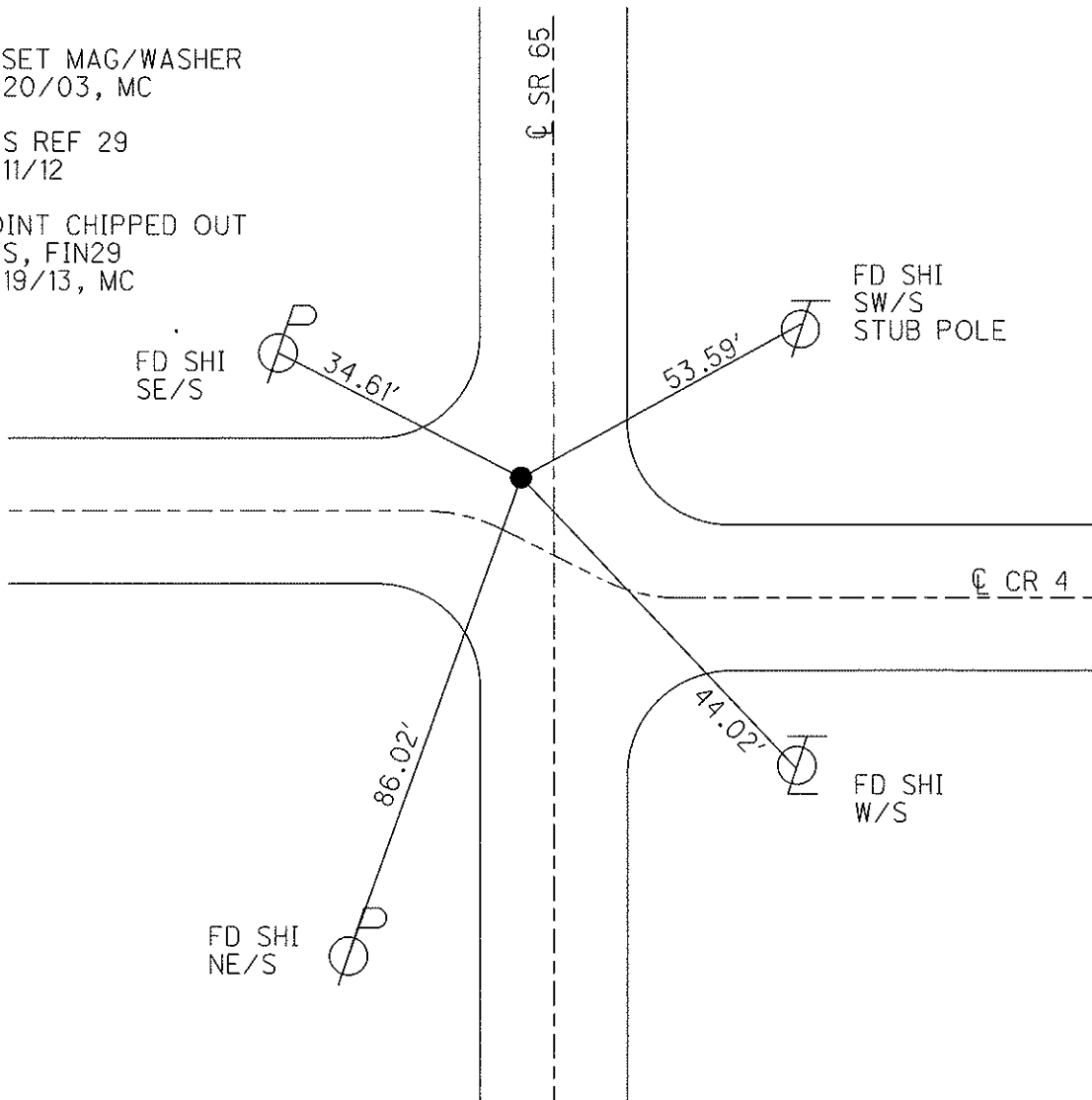
TYPE MONUMENT MAG / WASHER
 ON SURFACE - ~~BELOW~~ ON _____
 LEFT - Q PAV'T - ~~RIGHT~~ 3.5'
5.5' TO LT EDGE PAVEMENT
 S.L.M. 769+38, 3.5' N. OF Q WEST
 Grid: Northing: 627010.518 Easting: 1572942.125



RESET MAG/WASHER
5/20/03, MC

GPS REF 29
7/11/12

POINT CHIPPED OUT
GPS, FIN29
3/19/13, MC



O.D.O.T. DISTRICT 2 SURVEY OFFICE

PERSONNEL

REFERENCE NO. 29

SHEET 1 OF 26

NOTES Brumbaugh

H.C. BARNHISEL - DRAWING

DATE 04/11/03

ROUTE 65

R.C. GLASS

WEATHER SUNNY

COUNTY HENRY

TEMP. +55°

TOWNSHIP DAMACUS

SECTION 21

T 5 N R 8 E

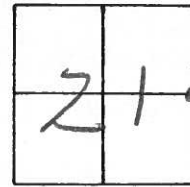
TYPE MONUMENT Sm RR Spk

ON SURFACE - ~~BELOW~~ yes

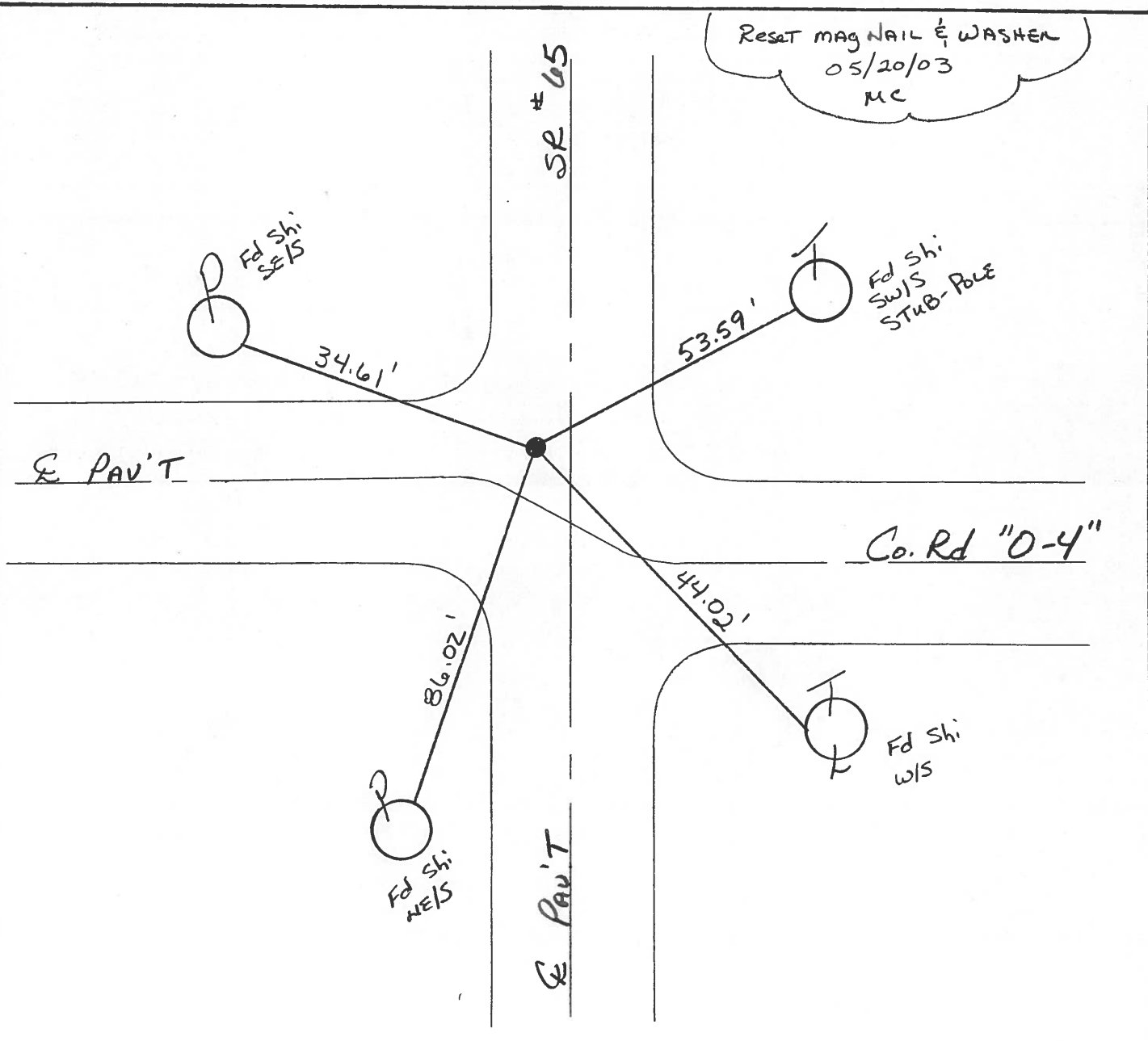
LEFT- & PAV'T. - ~~RIGHT~~ 3.5'

5.5' TO LT EDGE PAVEMENT

S.L.M. 769+38 3.5' N. of & WEST



Reset MAG NAIL & WASHER
05/20/03
MC



Resurfaced 2002

O.D.O.T. DISTRICT 2 SURVEY OFFICE

PERSONNEL

REFERENCE NO. 29

SHEET OF

NOTES BARNHISEL

H.C. SOCKMAN

R.C. LOEHRKE

DATE 5-14-87

WEATHER Sunny

TEMP. +75°

ROUTE U.S. 6

COUNTY HENRY

TOWNSHIP DAMASCUS

SECTION 21

TS N R 8 E

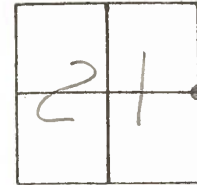
TYPE MONUMENT P.R. SPIKE

~~ON SURFACE~~ - BELOW 1"

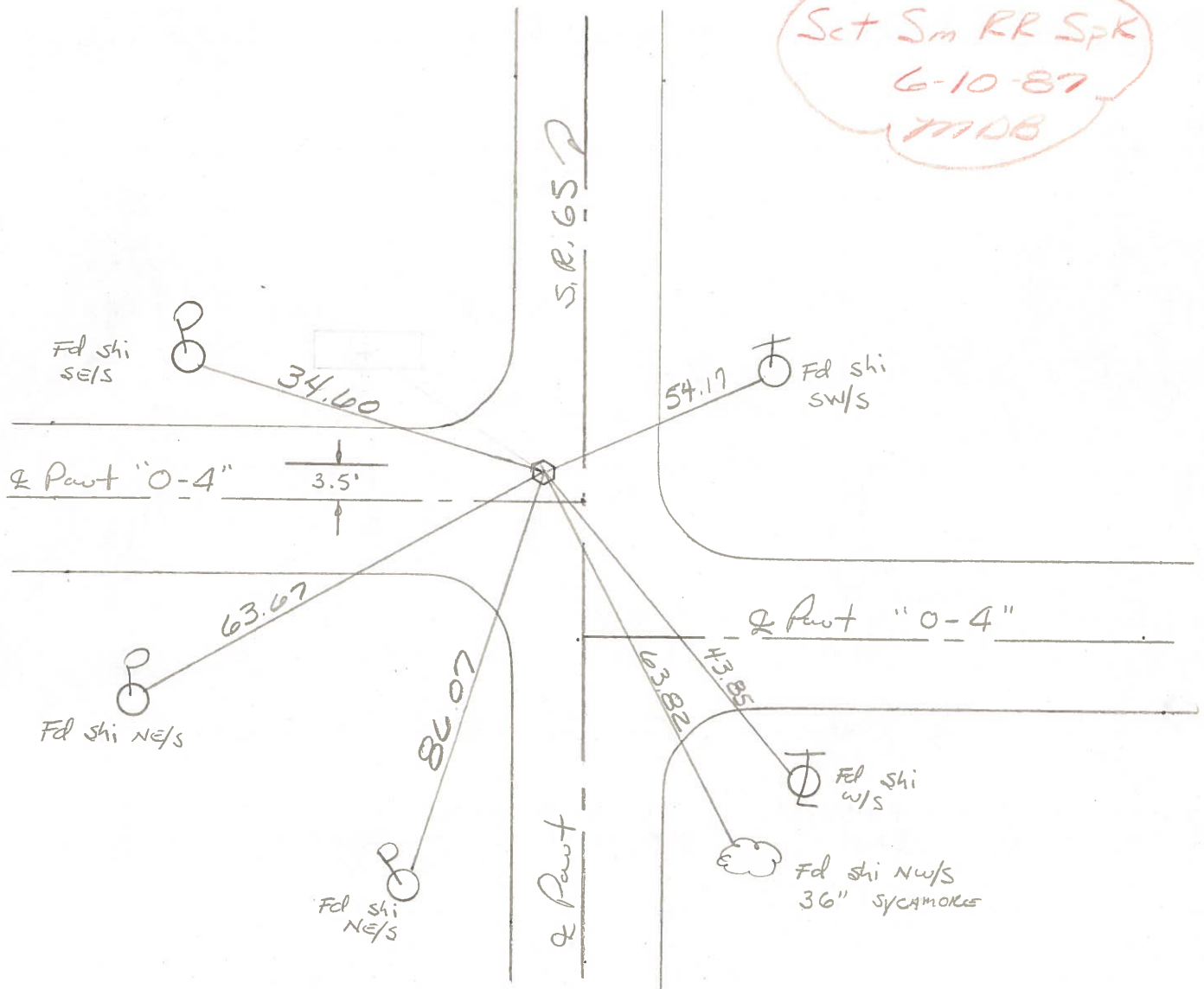
LEFT - ~~E~~ PAV'T. - RIGHT 2.1'

 TO EDGE PAVEMENT

S.L.M. 769+49



Set Sm RR Spk
 6-10-87
 MAB



ODOT. DISTRICT 2 SURVEY OFFICE

SHEET _____ OF _____

County HENRY S.R. 65

Date 2-1-84

Township DAMASCUS

Weather Clear

Section 21

Temp. 20°

TSN, R&E

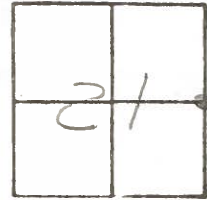
Personnel HOFFMAN

LOEHKE H.C.

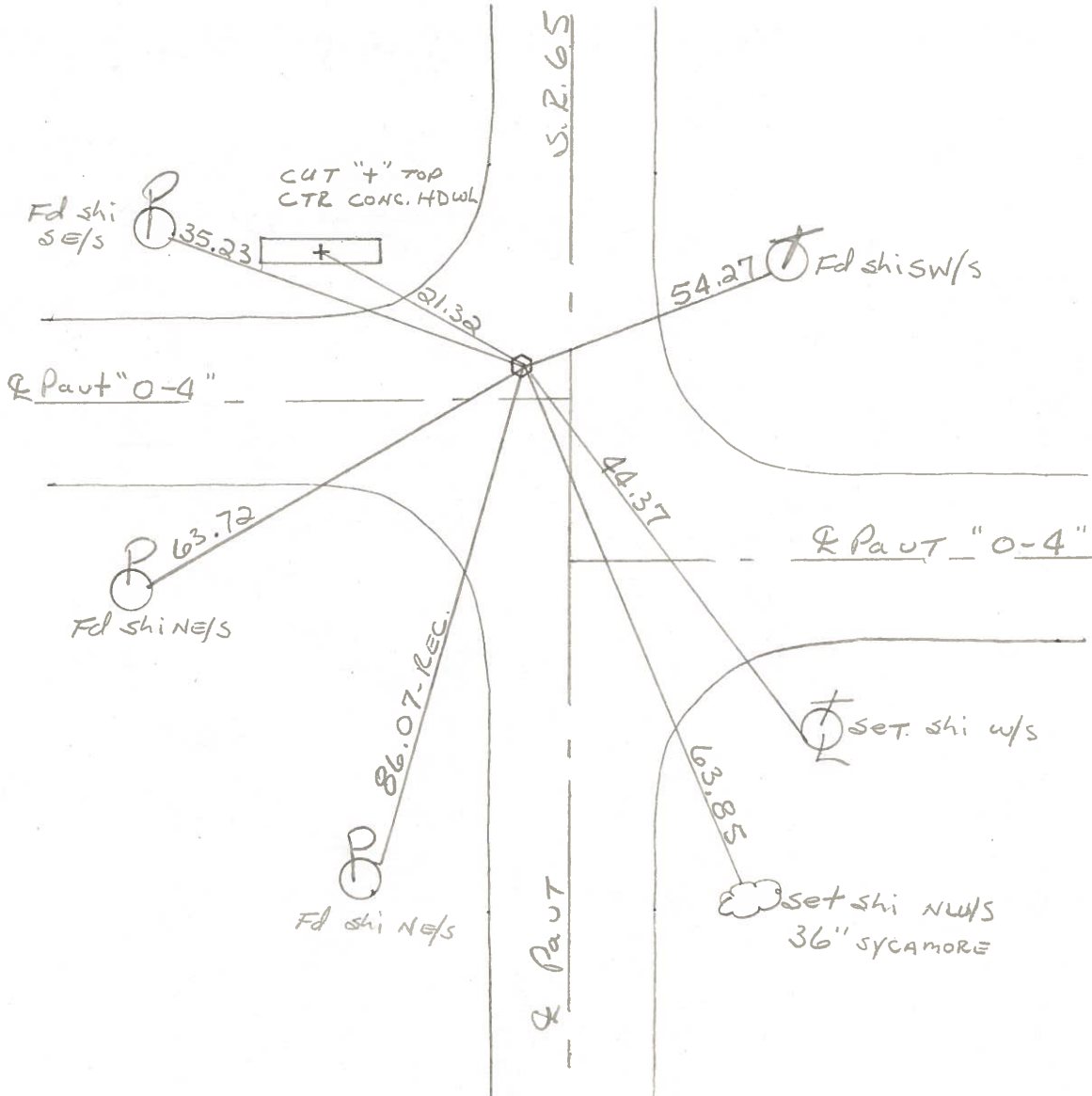
HOUSEHOLDER R.C.

BARNHISEL

29



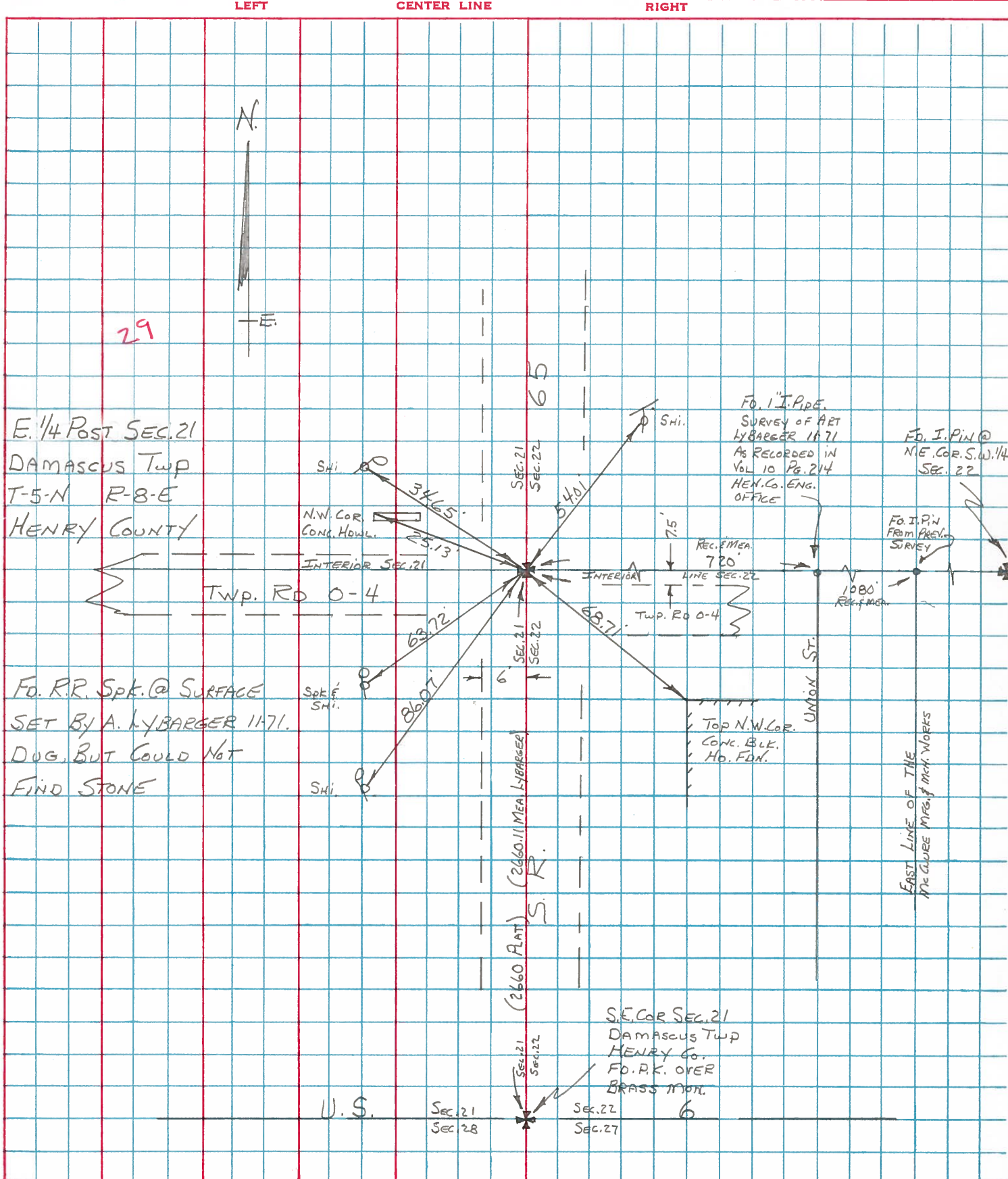
Fd R.R. SPK 1" BELOW SURFACE
 2.1' LT. of & PAUT SR65
 3.5' N. of & PAUT "0-4" West



PERSONNEL	TITLE	PERSONNEL	TITLE
BURNSIDE			
SMITH			
BOWERS			
MEAD			

COUNTY HENRY DATE 4-5-76
 S. R. 65 WEATHER CLEAR
 SEC. N. CORP. McCLURE TEMP. +58°

DESCRIPTION REF. TO & CONTROL POINTS JOB NO. _____



PERSONNEL	TITLE	PERSONNEL	TITLE
BURNSIDE			
SMITH			
BOWERS			
MEAD			

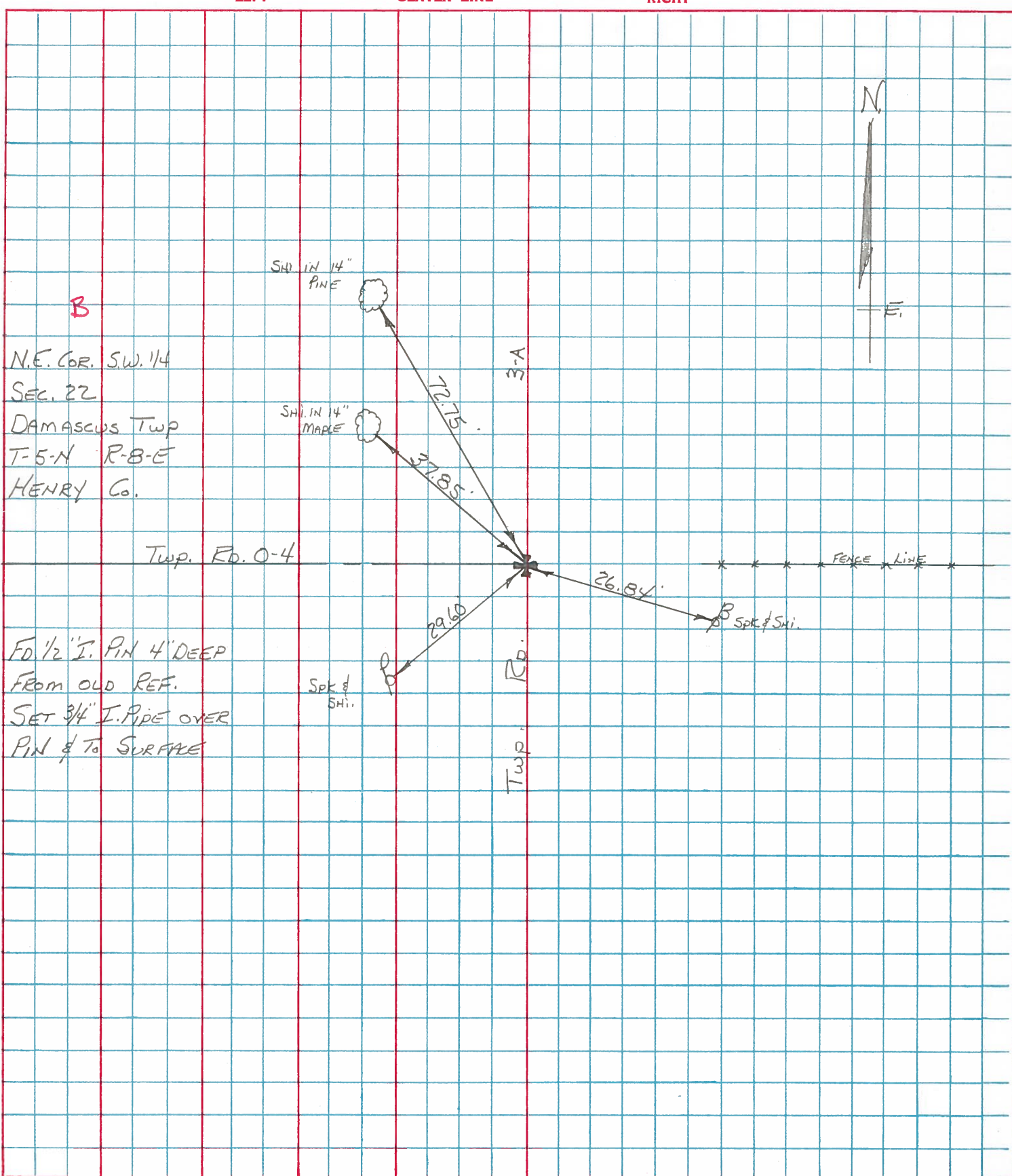
COUNTY HENRY DATE 4-5-76

~~S. R.~~ Twp. Rd. 0-4 & Twp. Rd. 3-A WEATHER CLEAR

SEC. 22 DAMASCUS Twp TEMP. +58°

DESCRIPTION REF. SEC. CORNER

JOB NO. _____



B
 N.E. COR. S.W. 1/4
 SEC. 22
 DAMASCUS Twp
 T-5-N R-8-E
 HENRY Co.

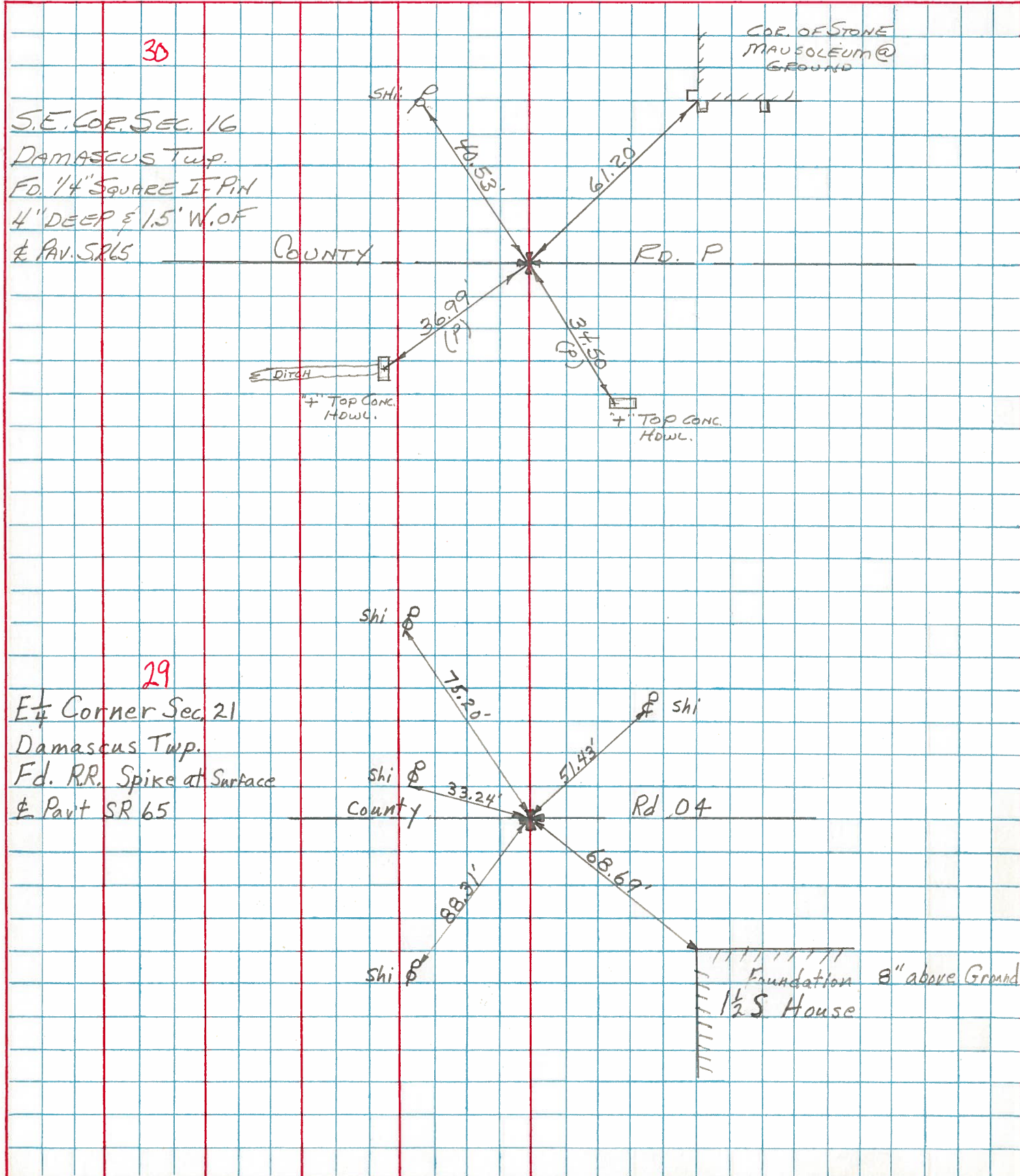
FD. 1/2" I. PIN 4' DEEP
 FROM OLD REF.
 SET 3/4" I. PIPE OVER
 PIN & TO SURFACE

SHEET NO. _____

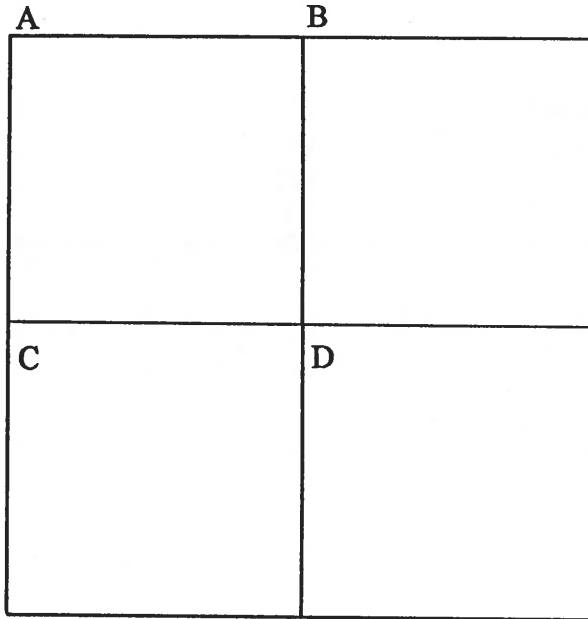
PERSONNEL TITLE PERSONNEL TITLE
 BURNSIDE _____
 BOWERS _____
 MEAD _____

COUNTY HENRY DATE 4-10-74
 S. R. 65 WEATHER CLEAR
 SEC. DAMASCUS TWP TEMP. +42°

DESCRIPTION CONTROL TIES JOB NO. _____



5'-W &
 4'-DEEP



COUNTY: HENRY

TOWNSHIP: DAMASCUS

T- 5 -N R- 8 -E

SECTION: 22

R.W., C.S.

- A - Found 3/4" iron pipe from state references noted as being over stone.
 - 40.48' N.W. to nail and shiner se/s power pole
 - 61.07' N.N.E. to S.W. cor. conc. step @ ground
 - 61.20' N.E. to S.W. cor. of mausoleum @ ground (not decorative extension).
 - 34.52' S.E. to "+" top concrete headwall (P)
 - 37.02' S.W. to "+" top concrete headwall (P)

10/02/92 R.W, S.K.

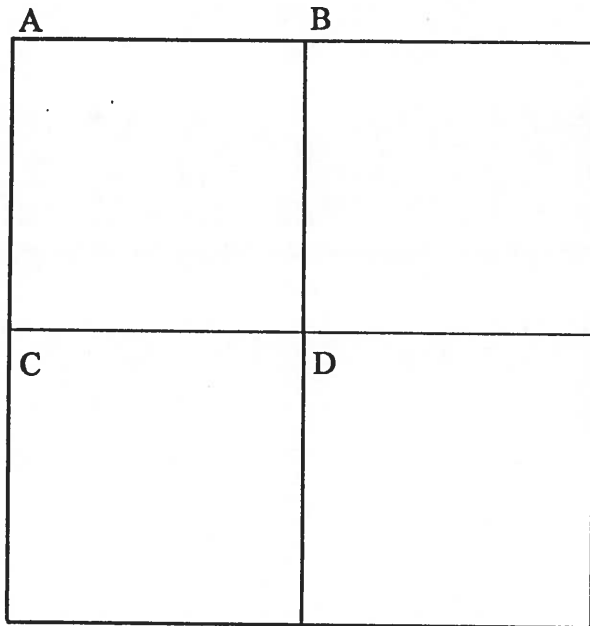
- 40.39' N.W. to nail & shiner se/s power pole.
- 34.57' S.S.E. to sawed "+" top east end conc. headwall. (P)
- 37.06' W.S.W. to sawed "+" top conc. headwall. (P)
- 38.61' N.E. to sawed "+" SE corner catch basin. (P)

6/24/80 R.W., J.J., C.S.

- B - Found stone (9" x 12" x 15") 10" below road surface. Placed center punched R.R. spike on surface over top center of stone. Pk's 6' north and east. Stone is 4.0' north of south edge 18' pavement and 8.6' west of east edge 16' pavement.
 - 55.30' N.N.E. to duplex w/s power pole
 - 77.17' E.N.E. to duplex s/s power pole (P)
 - 66.91' S.E. to N.W. cor. brick church building
 - 46.01' S.W. to duplex se/s power pole

10/02/92 R.W, S.K.

- 57.57' N.N.E. to duplex w/s power pole. (new)
- 46.03' S.W. to duplex se/s power pole. (new)



COUNTY: HENRY

TOWNSHIP: DAMASCUS

T- 5 -N R- 8 -E

SECTION: 22

R.W., J.J., C.S.

C- Found R.R. spike from state references. State dug but didn't find a stone. Ties are unchecked.

- 25.13' N.N.W. to "+" N.W. cor. conc. headwall
- 34.65' N.W. to nail and shiner se/s of power pole
- 54.01' N.N.E. to nail and shiner on sw/s of telephone pole
- 68.71' S.E. to top N.W. cor. conc. blk. foundation
- 86.07' S.S.W. to nail and shiner ne/s of power pole
- 63.72' S.W. to nail and shiner ne/s of power pole

10/02/92 R.W, S.K.

- 53.78' N.N.E. to duplex sw/s telephone pole.
- 53.58' N.N.E. to nail & shiner sw/s pedestal post.
- 43.95' S.E. to nail & shiner nw/s light pole.
- 86.03' S.S.W. to nail & shiner ne/s power pole.
- 26.61' N.W. to sawed "+" NE corner conc. catch basin.

R.W., J.J., C.S.

D - Found iron pipe 0.15' north and 0.30' west of high point of stone (4" x 10" x 13") 13" below road surface. Removed iron pin. Placed center punched R.R. spike on surface over high point of stone. Pk's 6' north and east. Stone is 6.5' west of east edge 16' pavement and 5.6' north of south edge 16' pavement.

- 38.00' N.W. to duplex se/s 16" Maple
- 26.49" S.E. to nail and shiner nw/s brace pole
- 29.70' S.W. to nail and shiner ne/s power pole

10/02/92 R.W, S.K.

- 37.88' N.W. to duplex (new) se/s 16" maple.
- 20.63' N.N.E. to 5/8" iron pin at east edge pavement.