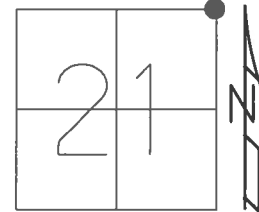


O.D.O.T. DISTRICT 2 SURVEY OFFICE (USE ONLY)

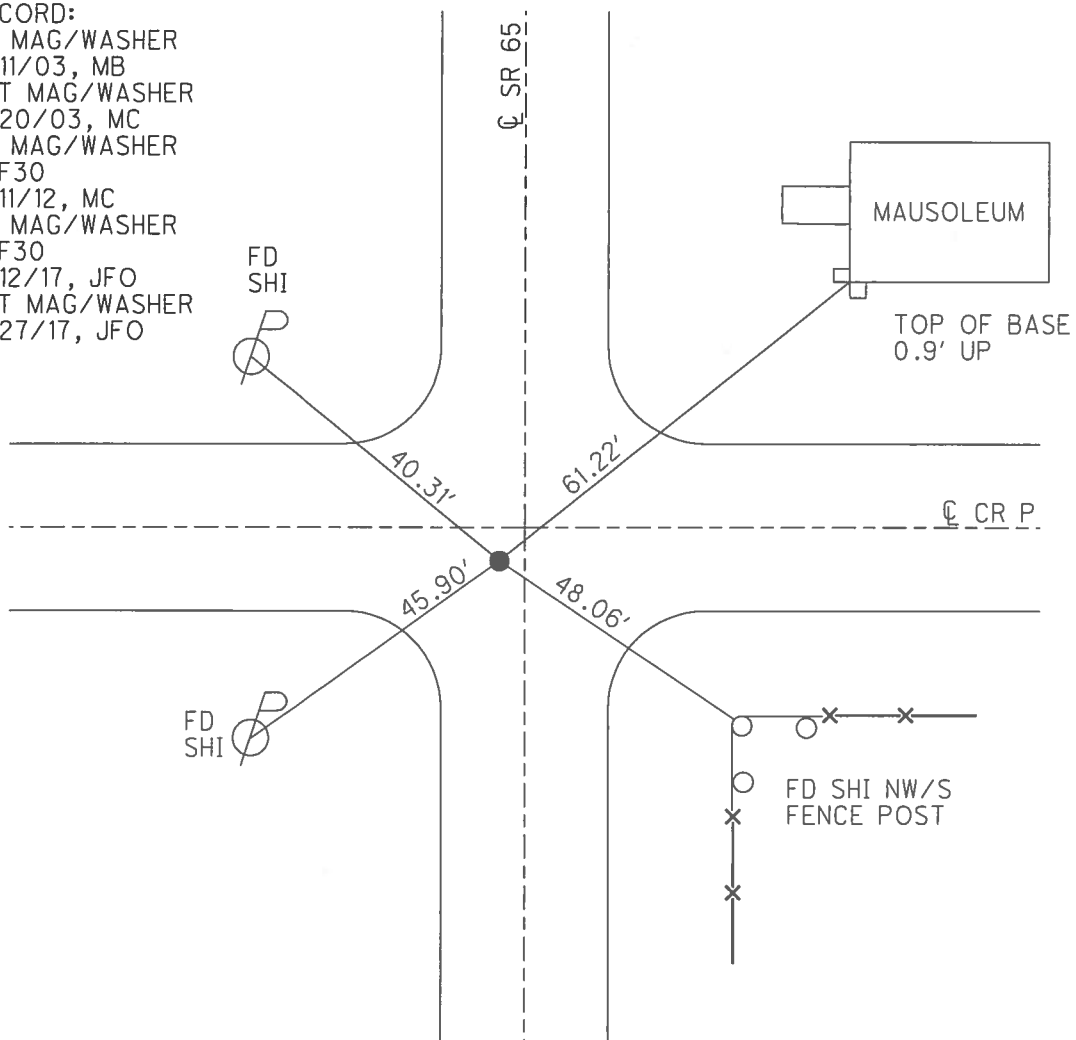
PERSONNEL _____ REFERENCE NO. 30 SHEET 38 OF 42
 NOTES RHOADES DATE 5/9/17 ROUTE SR 65
 H.C. O'DONNELL WEATHER SUNNY COUNTY HENRY
 R.C. RHOADES TEMP. 58° TOWNSHIP DAMASCUS
 _____ SECTION 21
 _____ T 5 N R 8 E

TYPE MONUMENT MAG/WASHER
 ON SURFACE - ~~BELOW~~ ON _____
 LEFT - ☉ PAV'T - ~~RIGHT~~ 1.6', 3.5' S. OF ☉ W.
 _____ TO _____ EDGE PAVEMENT
 S.L.M. 795+98



GRID: NORTHING: 629669.019 EASTING: 1572981.606

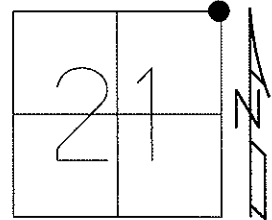
RECORD:
 FD MAG/WASHER
 4/11/03, MB
 SET MAG/WASHER
 5/20/03, MC
 FD MAG/WASHER
 REF30
 7/11/12, MC
 FD MAG/WASHER
 REF30
 5/12/17, JFO
 SET MAG/WASHER
 9/27/17, JFO



O.D.O.T. DISTRICT 2 SURVEY OFFICE (USE ONLY)

PERSONNEL	REFERENCE NO. <u>30</u>	SHEET <u>38</u> OF <u>42</u>
NOTES <u>BRUMBAUGH</u>	DATE <u>4/11/03</u>	ROUTE <u>SR 65</u>
H.C. <u>BARNHISEL</u>	WEATHER <u>SUNNY</u>	COUNTY <u>HENRY</u>
R.C. <u>GLASS</u>	TEMP. <u>55°</u>	TOWNSHIP <u>DAMASCUS</u>
		SECTION <u>21</u>
		T <u>5</u> N R <u>8</u> E

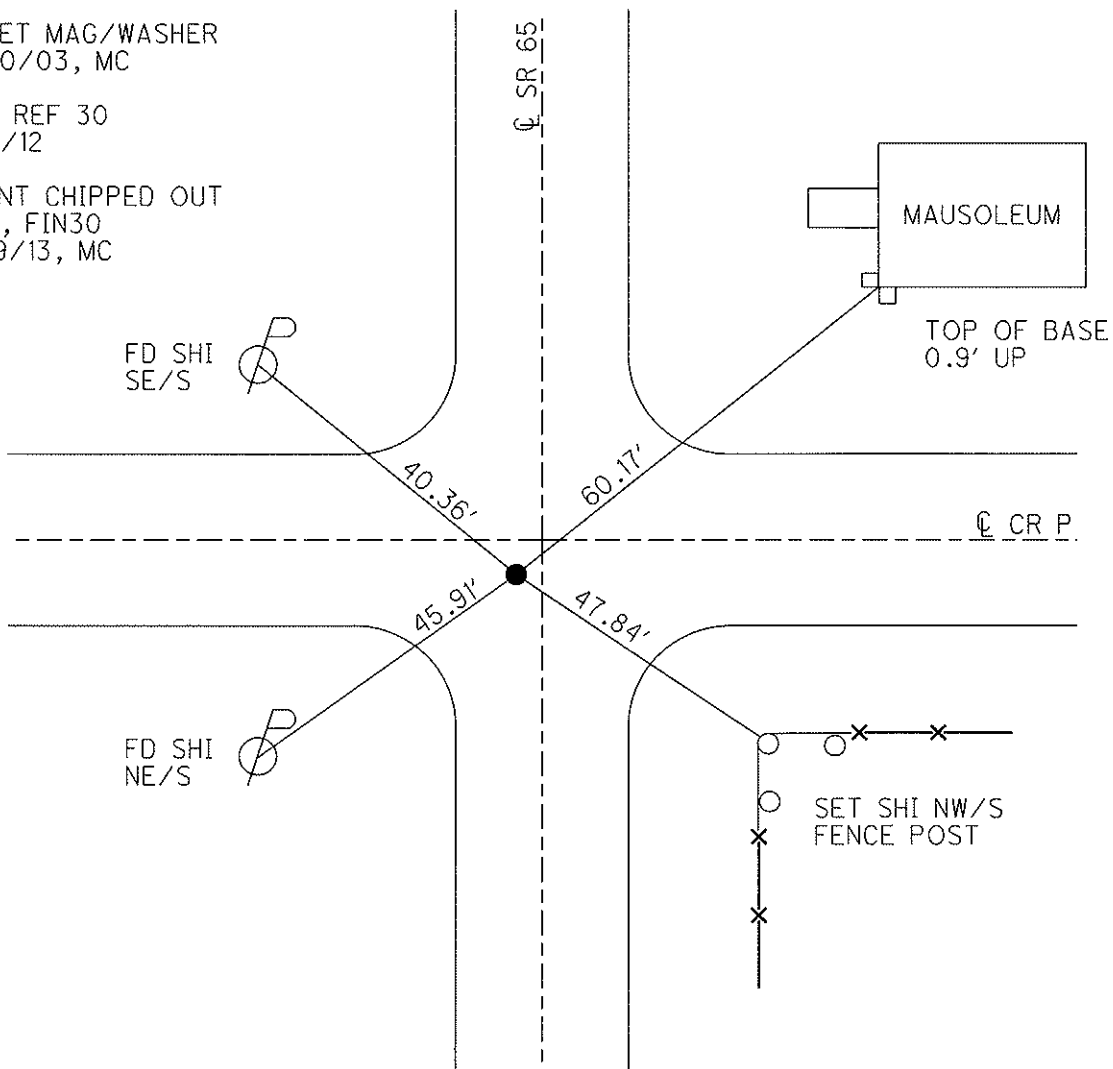
TYPE MONUMENT MAG / WASHER
 ON SURFACE - ~~BELOW~~ ON
 LEFT - ☉ PAV'T - ~~RIGHT~~ 1.6'
- TO - EDGE PAVEMENT
 S.L.M. 795+98, 3.5' S. OF ☉ WEST
 Grid: Northing: 629669.048 Easting: 1572981.531



RESET MAG/WASHER
5/20/03, MC

GPS REF 30
7/11/12

POINT CHIPPED OUT
GPS, FIN30
3/19/13, MC



O.D.O.T. DISTRICT 2 SURVEY OFFICE

PERSONNEL

REFERENCE NO. 30

SHEET 2 OF 26

NOTES Brumbaugh

H.C. BARNHISEL - DRAWING

DATE 04/11/03

ROUTE 65

R.C. Glass

WEATHER SUNNY

COUNTY HENRY

TEMP. +55°

TOWNSHIP DAMACUS

SECTION 21

T 5 N R 8 N

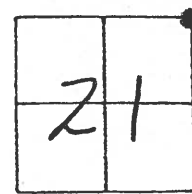
TYPE MONUMENT 5m RR SPIKE

ON SURFACE - BELOW yes

LEFT - € PAV'T. - RIGHT 1.6'

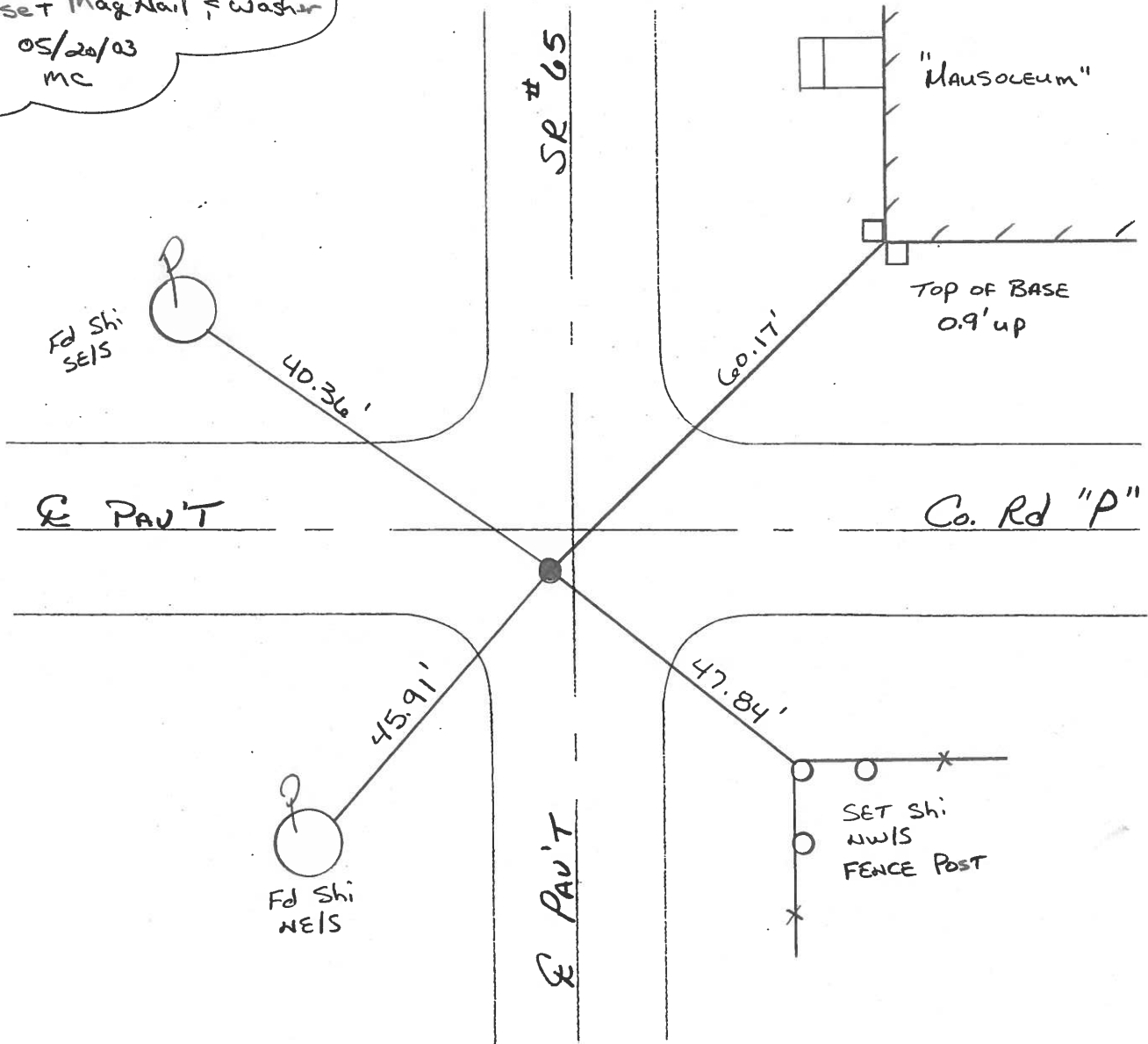
— TO — EDGE PAVEMENT

S.L.M. 795+98 3.5' S. OF E WEST



Reset Mag Nail & washer

05/20/03
mc



O.D.O.T. DISTRICT 2 SURVEY OFFICE

PERSONNEL _____

REFERENCE NO. 30

SHEET _____ OF _____

NOTES BARNHISEL

H.C. SOCKMAN

DATE 5-14-87

ROUTE SR 65

R.C. Loehke

WEATHER SUNNY

COUNTY HENRY

TEMP. +75°

TOWNSHIP DAMASCUS

SECTION 21

TS N R B E

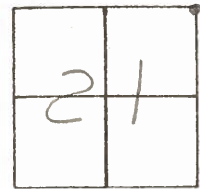
TYPE MONUMENT 3/4" O.D. IRON PIPE

ON SURFACE - BELOW yes

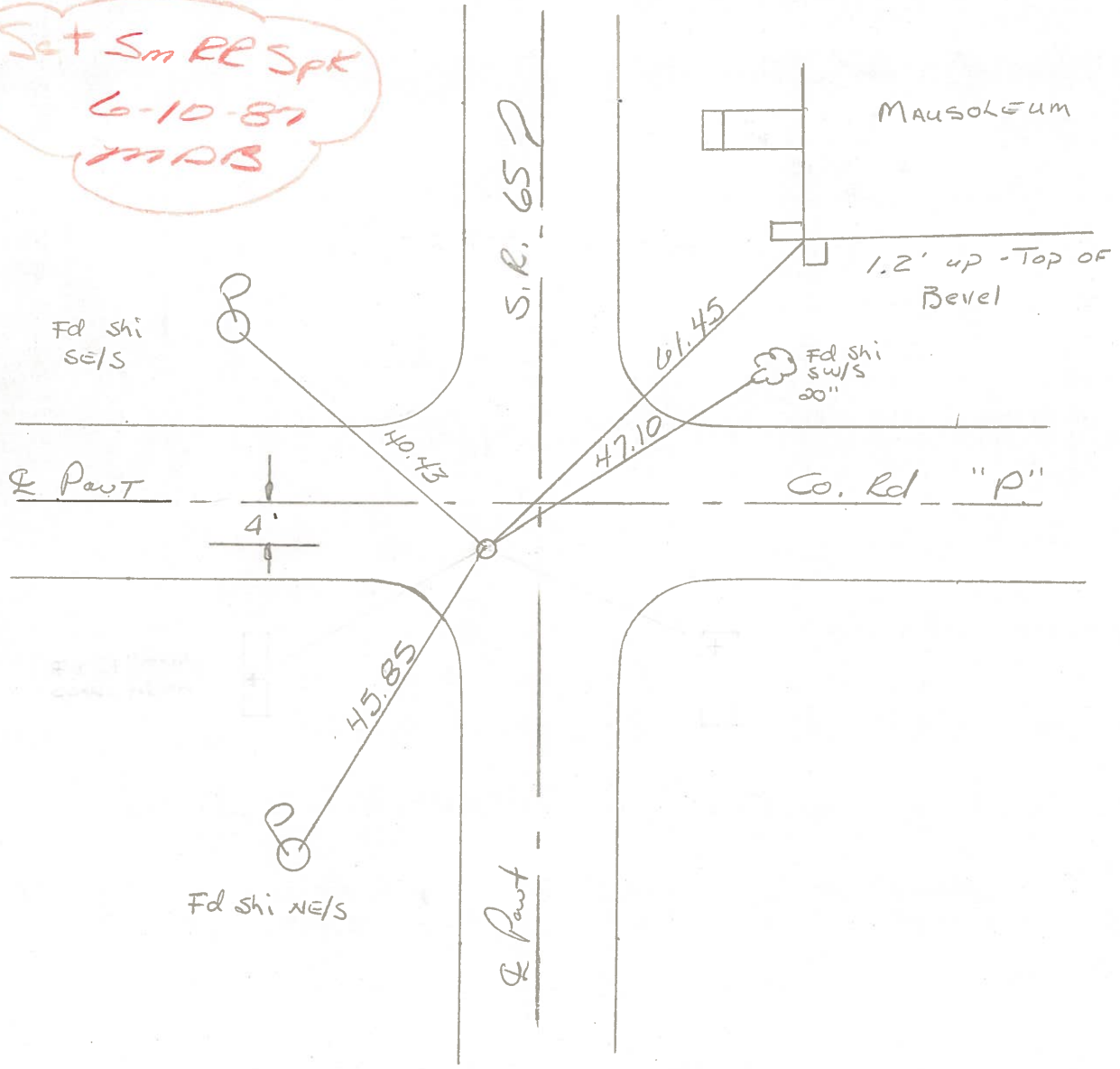
LEFT- & PAV'T. - RIGHT 1.6'

TO EDGE PAVEMENT

S.L.M. 796 + 09



Set Sm RR Spk
6-10-87
MAB



Q.D.O.T. DISTRICT 2 SURVEY OFFICE

SHEET _____ OF _____

County HENRY S.R. 65

Date 2-1-84

Township DAMASCUS

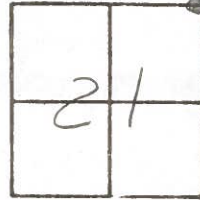
Weather Clear

Section 21

Temp. 20°

T5N, R8E

Personnel HOFFMAN



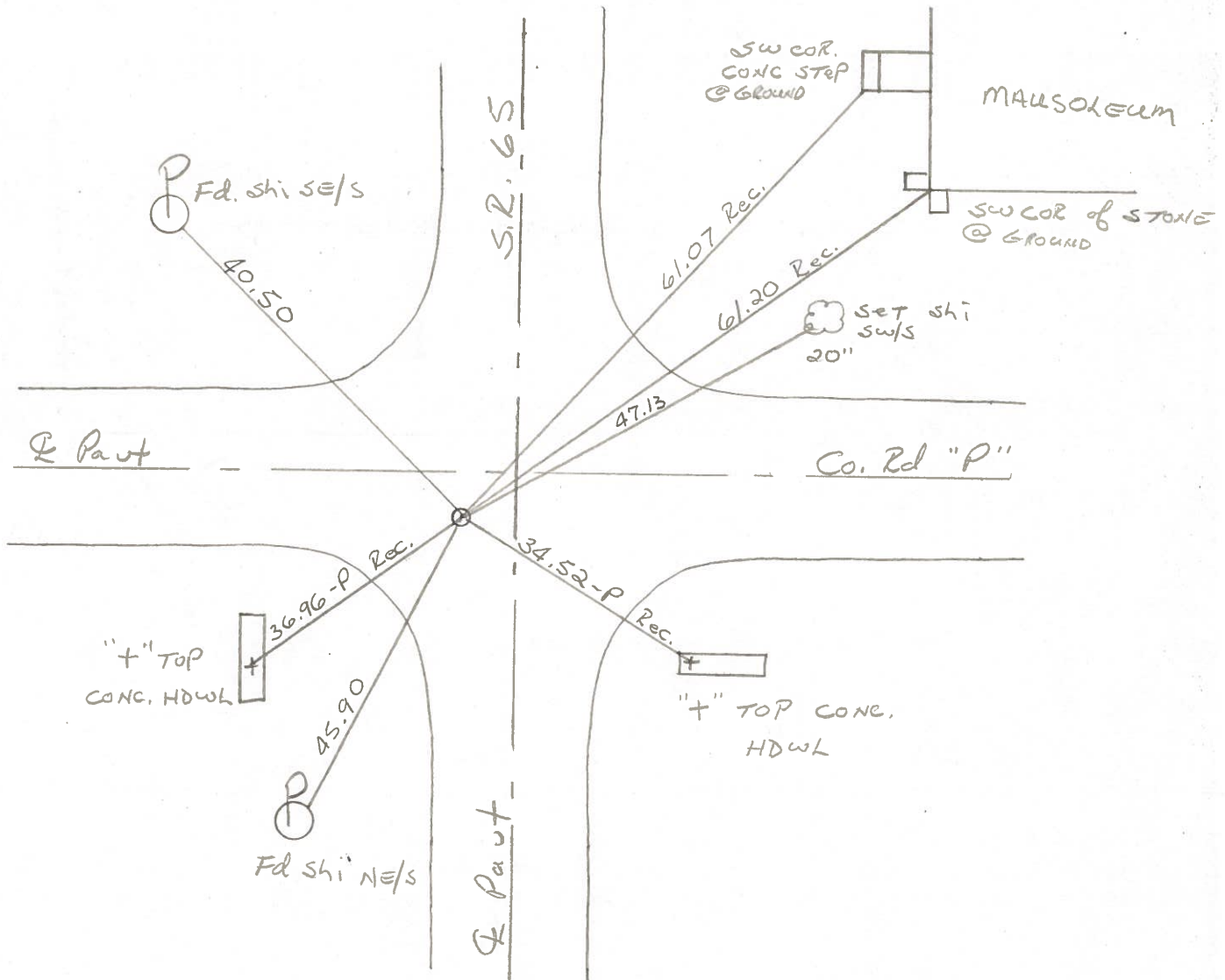
#30

LOERKE H.C.

HOUSEHOLDER R.C.

BARNHISEL

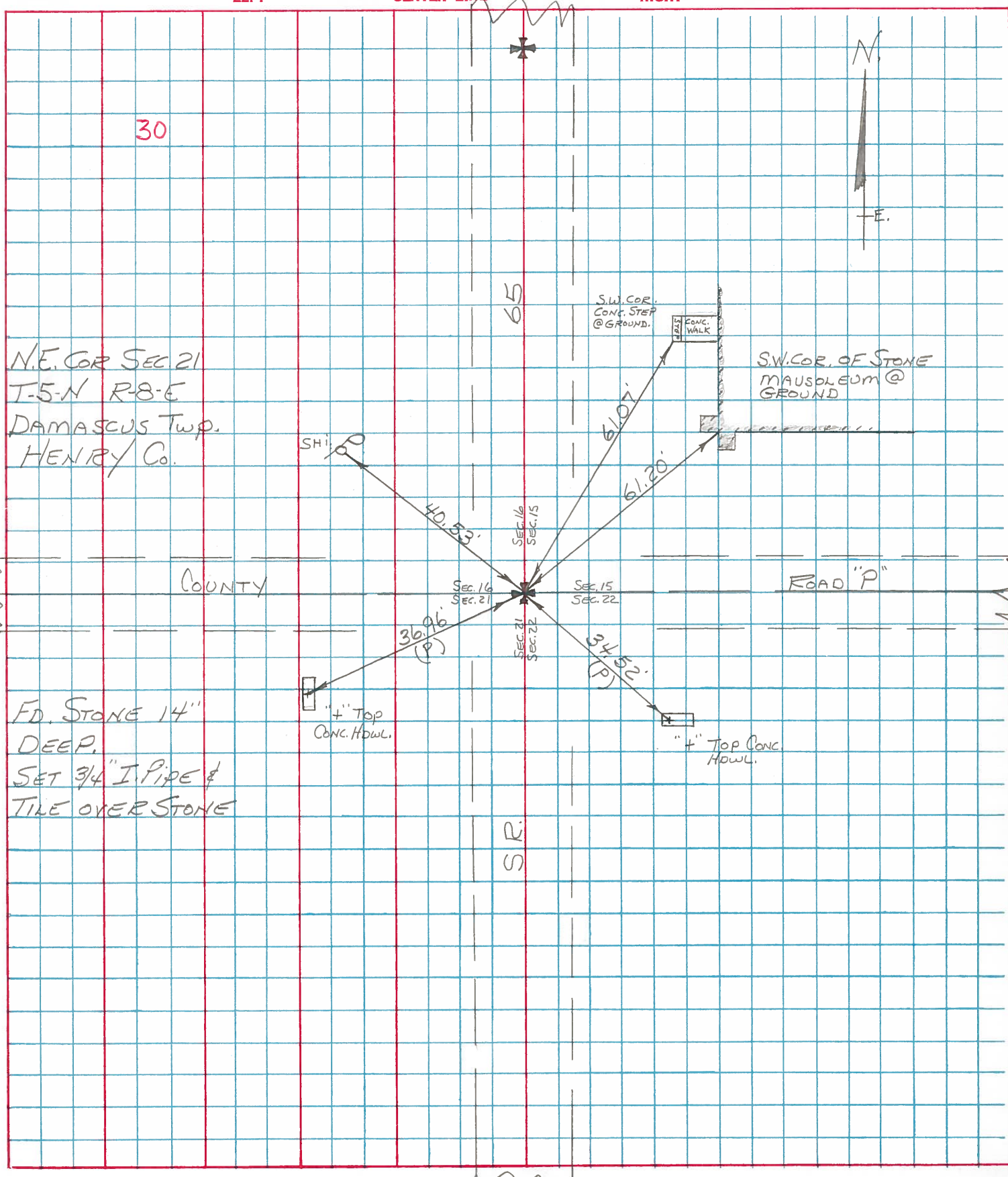
Fd 3/4" O.D. IRON PIPE @ SURFACE
1.6' Lt. of ♀ Paint SR65



PERSONNEL TITLE PERSONNEL TITLE
 BURNSIDE _____
 KNAPE _____
 MEAD _____

COUNTY HENRY DATE 7-11-75
 S. R. 65 WEATHER CLEAR
 SEC. N.E. COR SEC. 21 TEMP. +72°

DESCRIPTION REF. TIES TO SECTION CORNER LEFT CENTER LINE RIGHT JOB NO. _____



N.E. COR SEC 21
 T-5-N R-8-E
 DAMASCUS Twp.
 HENRY Co.

FD. STONE 14"
 DEEP.
 SET 3/4" I. PIPE &
 TILE OVER STONE

S.W. COR.
 CONC. STEP
 @ GROUND.

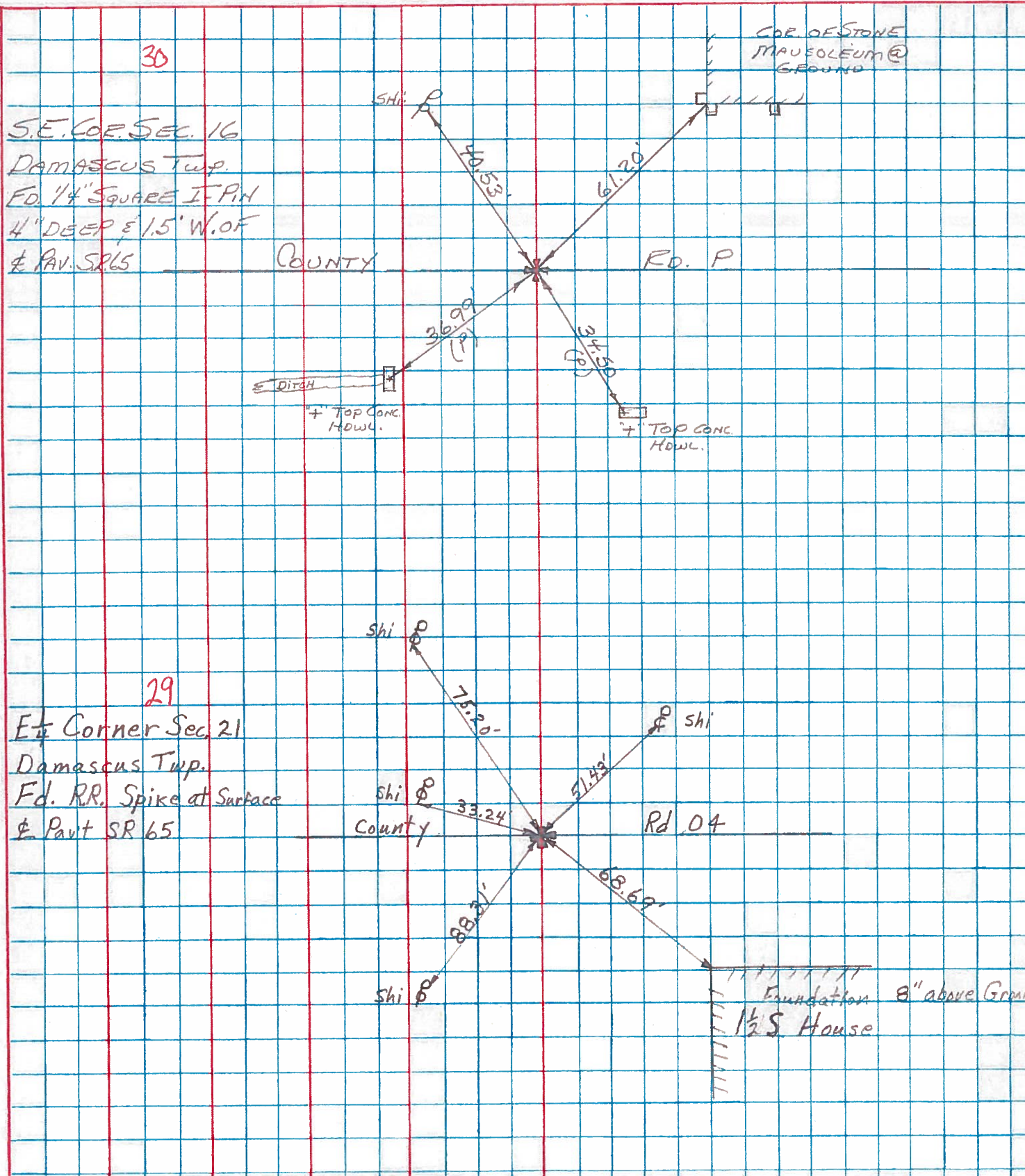
S.W. COR. OF STONE
 MAUSOLEUM @
 GROUND

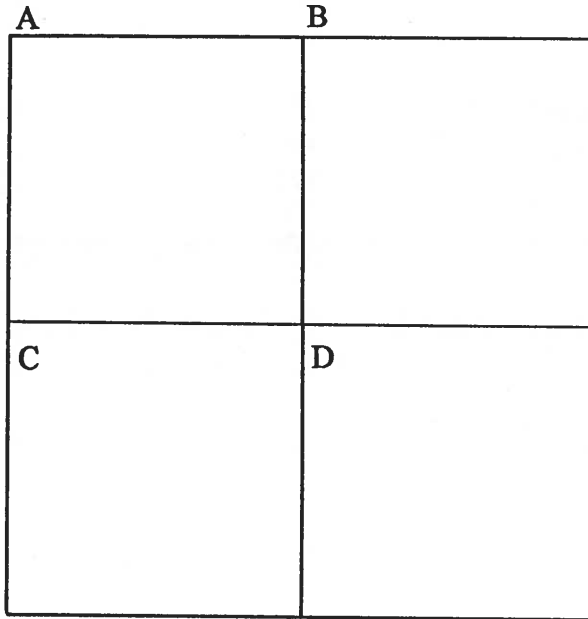


PERSONNEL TITLE PERSONNEL TITLE
 BURNSIDE _____
 BOWERS _____
 MEAD _____

COUNTY HENRY DATE 4-10-74
 S. R. 65 WEATHER CLEAR
 SEC. DAMASCUS Twp TEMP. +42°

DESCRIPTION CONTROL TIES JOB NO. _____
 LEFT CENTER LINE RIGHT





COUNTY: HENRY

TOWNSHIP: DAMASCUS

T- 5 -N

R- 8 -E

SECTION:

22

R.W., C.S.

- A - Found 3/4" iron pipe from state references noted as being over stone.
- 40.48' N.W. to nail and shiner se/s power pole
- 61.07' N.N.E. to S.W. cor. conc. step @ ground
- 61.20' N.E. to S.W. cor. of mausoleum @ ground (not decorative extension).
- 34.52' S.E. to "+" top concrete headwall (P)
- 37.02' S.W. to "+" top concrete headwall (P)

10/02/92 R.W, S.K.

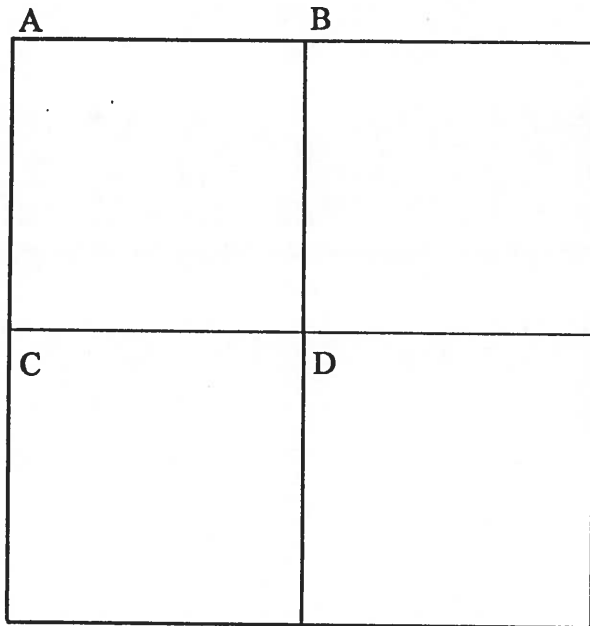
- 40.39' N.W. to nail & shiner se/s power pole.
- 34.57' S.S.E. to sawed "+" top east end conc. headwall. (P)
- 37.06' W.S.W. to sawed "+" top conc. headwall. (P)
- 38.61' N.E. to sawed "+" SE corner catch basin. (P)

6/24/80 R.W., J.J., C.S.

- B - Found stone (9" x 12" x 15") 10" below road surface. Placed center punched R.R. spike on surface over top center of stone. Pk's 6' north and east. Stone is 4.0' north of south edge 18' pavement and 8.6' west of east edge 16' pavement.
- 55.30' N.N.E. to duplex w/s power pole
- 77.17' E.N.E. to duplex s/s power pole (P)
- 66.91' S.E. to N.W. cor. brick church building
- 46.01' S.W. to duplex se/s power pole

10/02/92 R.W, S.K.

- 57.57' N.N.E. to duplex w/s power pole. (new)
- 46.03' S.W. to duplex se/s power pole. (new)



COUNTY: HENRY

TOWNSHIP: DAMASCUS

T- 5 -N R- 8 -E

SECTION: 22

R.W., J.J., C.S.

C- Found R.R. spike from state references. State dug but didn't find a stone. Ties are unchecked.

- 25.13' N.N.W. to "+" N.W. cor. conc. headwall
- 34.65' N.W. to nail and shiner se/s of power pole
- 54.01' N.N.E. to nail and shiner on sw/s of telephone pole
- 68.71' S.E. to top N.W. cor. conc. blk. foundation
- 86.07' S.S.W. to nail and shiner ne/s of power pole
- 63.72' S.W. to nail and shiner ne/s of power pole

10/02/92 R.W, S.K.

- 53.78' N.N.E. to duplex sw/s telephone pole.
- 53.58' N.N.E. to nail & shiner sw/s pedestal post.
- 43.95' S.E. to nail & shiner nw/s light pole.
- 86.03' S.S.W. to nail & shiner ne/s power pole.
- 26.61' N.W. to sawed "+" NE corner conc. catch basin.

R.W., J.J., C.S.

D - Found iron pipe 0.15' north and 0.30' west of high point of stone (4" x 10" x 13") 13" below road surface. Removed iron pin. Placed center punched R.R. spike on surface over high point of stone. Pk's 6' north and east. Stone is 6.5' west of east edge 16' pavement and 5.6' north of south edge 16' pavement.

- 38.00' N.W. to duplex se/s 16" Maple
- 26.49" S.E. to nail and shiner nw/s brace pole
- 29.70' S.W. to nail and shiner ne/s power pole

10/02/92 R.W, S.K.

- 37.88' N.W. to duplex (new) se/s 16" maple.
- 20.63' N.N.E. to 5/8" iron pin at east edge pavement.