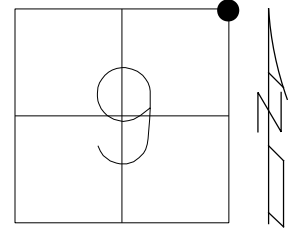


O.D.O.T. DISTRICT 2 SURVEY OFFICE (USE ONLY)

PERSONNEL _____ REFERENCE NO. 34 SHEET 1 OF 24
 NOTES MILLER DATE 12/19/23 ROUTE SR 65
 H.C. AUBLE WEATHER CLEAR COUNTY HENRY
 R.C. RHOADES TEMP. 27° TOWNSHIP DAMASCUS
ASTON SECTION 9
 DWG BY RHOADES PID 114846 T 5 N R 8 E

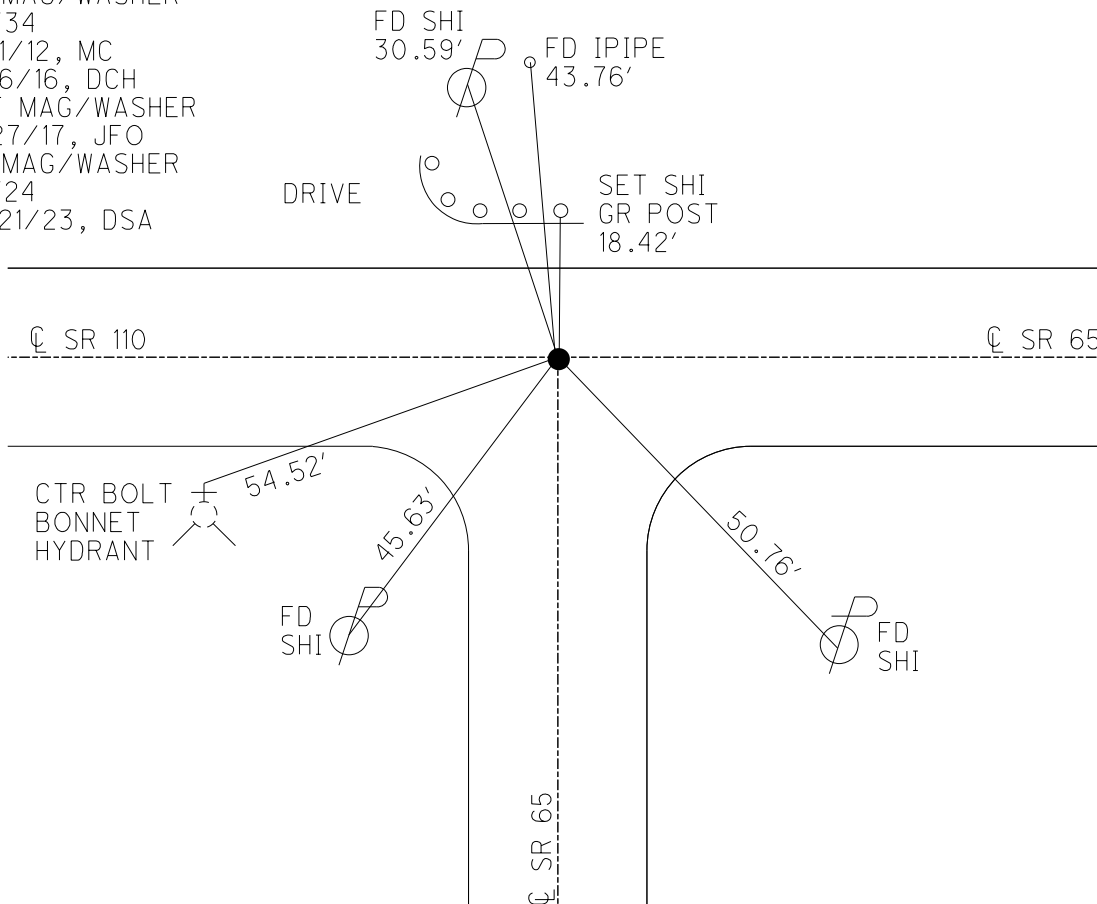
TYPE MONUMENT ON
 ON SURFACE - ~~BELOW~~ ON
 OFFSET CL PAVEMENT 1.1' LT : ~~RT~~
9.8' TO LT EDGE PAVEMENT
 STATION: 902+35.20



HORZ. DATUM: NAD83 2011 GEOID: NAVD88 2018
 GRID: NORTHING: 640241.079 EASTING: 1573133.732

RECORD:
 FD MAG/WASHER
 4/11/03, MB
 SET MAG/WASHER
 5/19/03, MC
 FD MAG/WASHER
 REF34
 7/11/12, MC
 2/16/16, DCH
 SET MAG/WASHER
 9/27/17, JFO
 FD MAG/WASHER
 REF24
 12/21/23, DSA

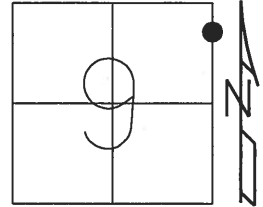
NOTE: REF23 SR 110



O.D.O.T. DISTRICT 2 SURVEY OFFICE (USE ONLY)

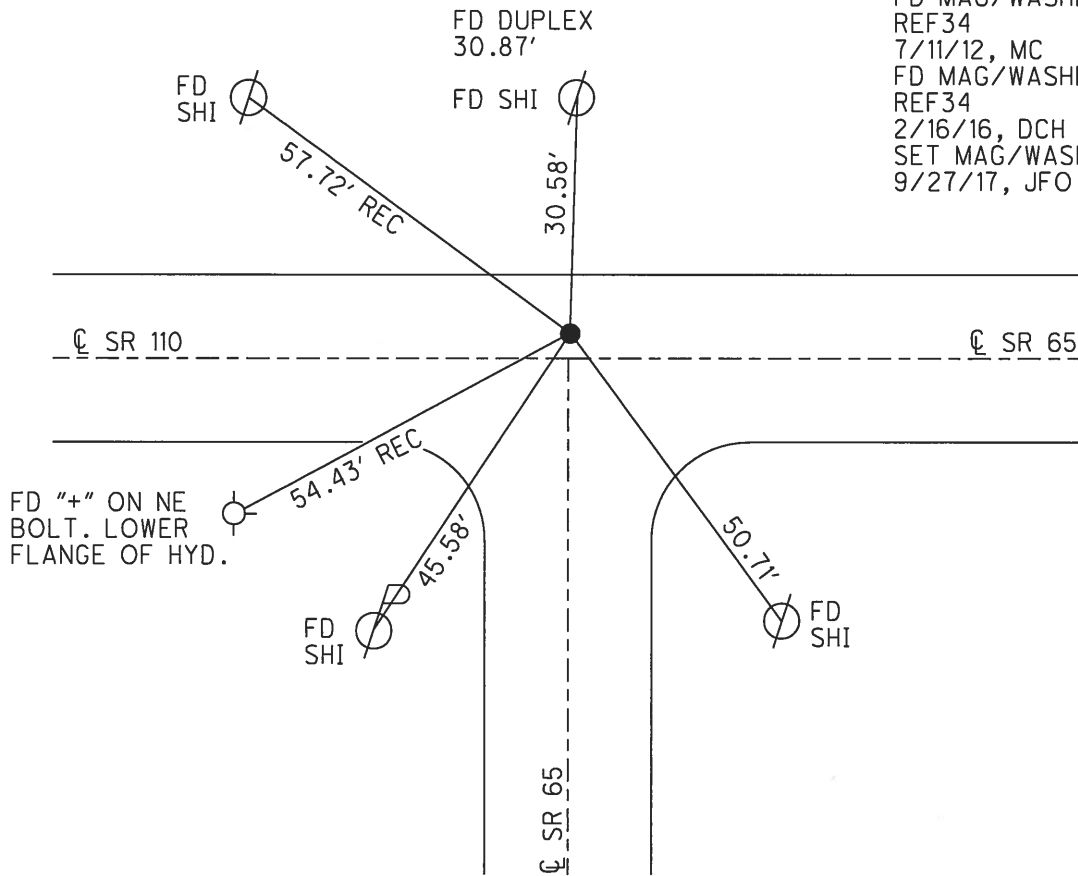
PERSONNEL	REFERENCE NO.	<u>34</u>	SHEET	<u>1</u>	OF	<u>24</u>
NOTES	<u>RHOADES</u>	DATE	<u>5/9/17</u>	ROUTE	<u>SR 65</u>	
H.C.	<u>O'DONNELL</u>	WEATHER	<u>SUNNY</u>	COUNTY	<u>HENRY</u>	
R.C.	<u>RHOADES</u>	TEMP.	<u>58°</u>	TOWNSHIP	<u>DAMASCUS</u>	
				SECTION	<u>9</u>	
				T	<u>5</u>	N
				R	<u>8</u>	E

TYPE MONUMENT MAG/WASHER
 ON SURFACE - ~~BELOW~~ ON _____
 LEFT - ℄ PAV'T - ~~RIGHT~~ 1.1'
9.8' TO LT EDGE PAVEMENT
 S.L.M. 902+35.20



GRID: NORTHING: 640241.079 EASTING: 1573133.732

RECORD:
 FD MAG/WASHER
 4/11/03, MB
 SET MAG/WASHER
 5/19/03, MC
 FD MAG/WASHER
 REF34
 7/11/12, MC
 FD MAG/WASHER
 REF34
 2/16/16, DCH
 SET MAG/WASHER
 9/27/17, JFO



O.D.O.T. DISTRICT 2 SURVEY OFFICE (USE ONLY)

PERSONNEL _____

REFERENCE NO. 34

SHEET 42 OF 42

NOTES BRUMBAUGH

DATE 4/11/03

ROUTE SR 65

H.C. BARNHISEL

WEATHER SUNNY

COUNTY HENRY

R.C. GLASS

TEMP. 56°

TOWNSHIP DAMASCUS

SECTION 9

T 5 N R 8 E

TYPE MONUMENT MAG / WASHER

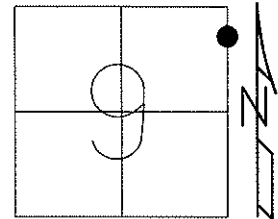
ON SURFACE - ~~BELOW~~ ON _____

LEFT - ☉ PAV'T - ~~RIGHT~~ 1.1'

9.8' TO LT EDGE PAVEMENT

S.L.M. 901+77, ON ☉ SOUTH

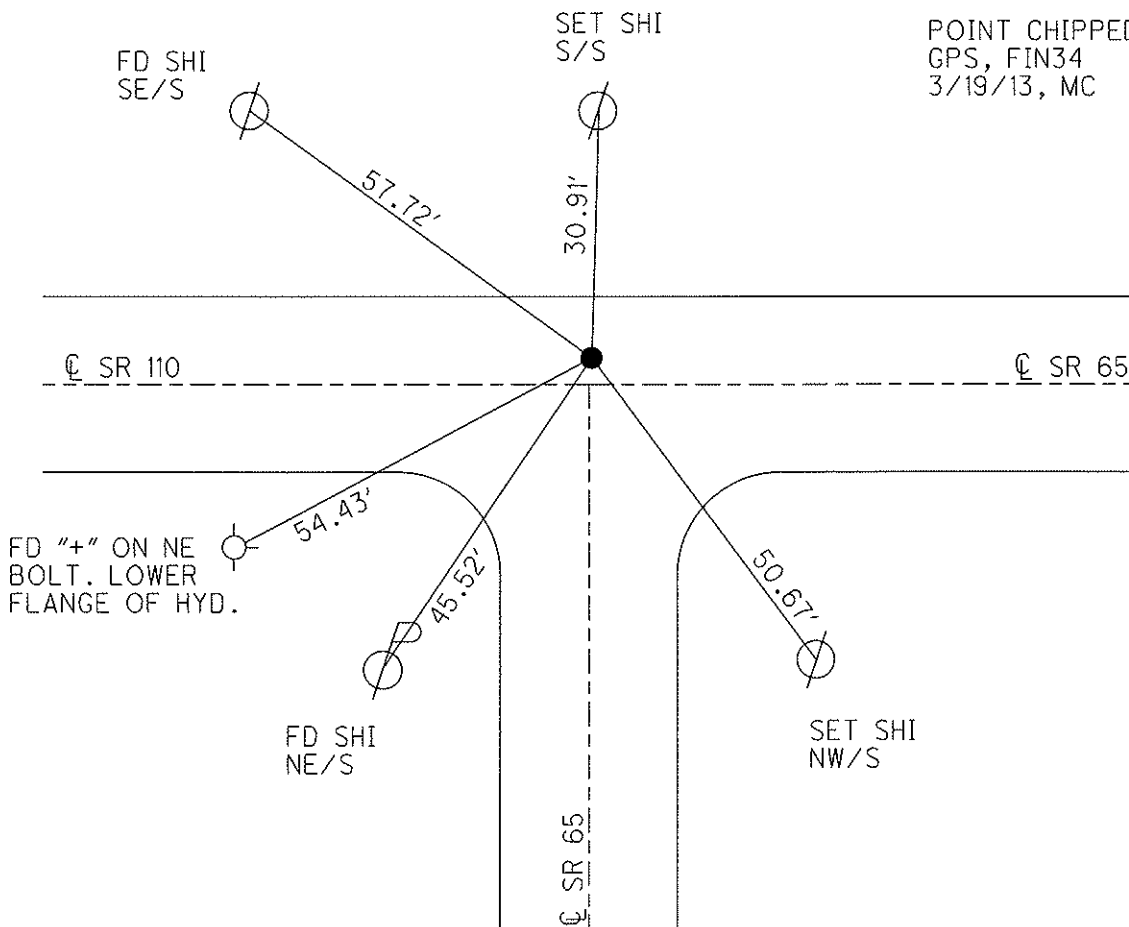
Grid: Northing: 640241.052 Easting: 1573133.675



RESET MAG/WASHER
5/19/03, MC

GPS REF 34
7/11/12

POINT CHIPPED OUT
GPS, FIN34
3/19/13, MC



O.D.O.T. DISTRICT 2 SURVEY OFFICE

PERSONNEL _____

REFERENCE NO. 34

SHEET 6 OF 26

NOTES Beumbaugh

H.C. BARNHISEL - DRAWING

DATE 04/11/03

ROUTE 65

R.C. GLASS

WEATHER SUNNY

COUNTY HENRY

TEMP. +56°

TOWNSHIP DAMACUS

SECTION 9

T5 N R 8 E

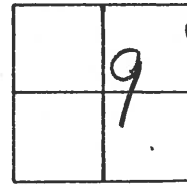
TYPE MONUMENT PK & Washer

ON SURFACE - ~~BELOW~~ yes

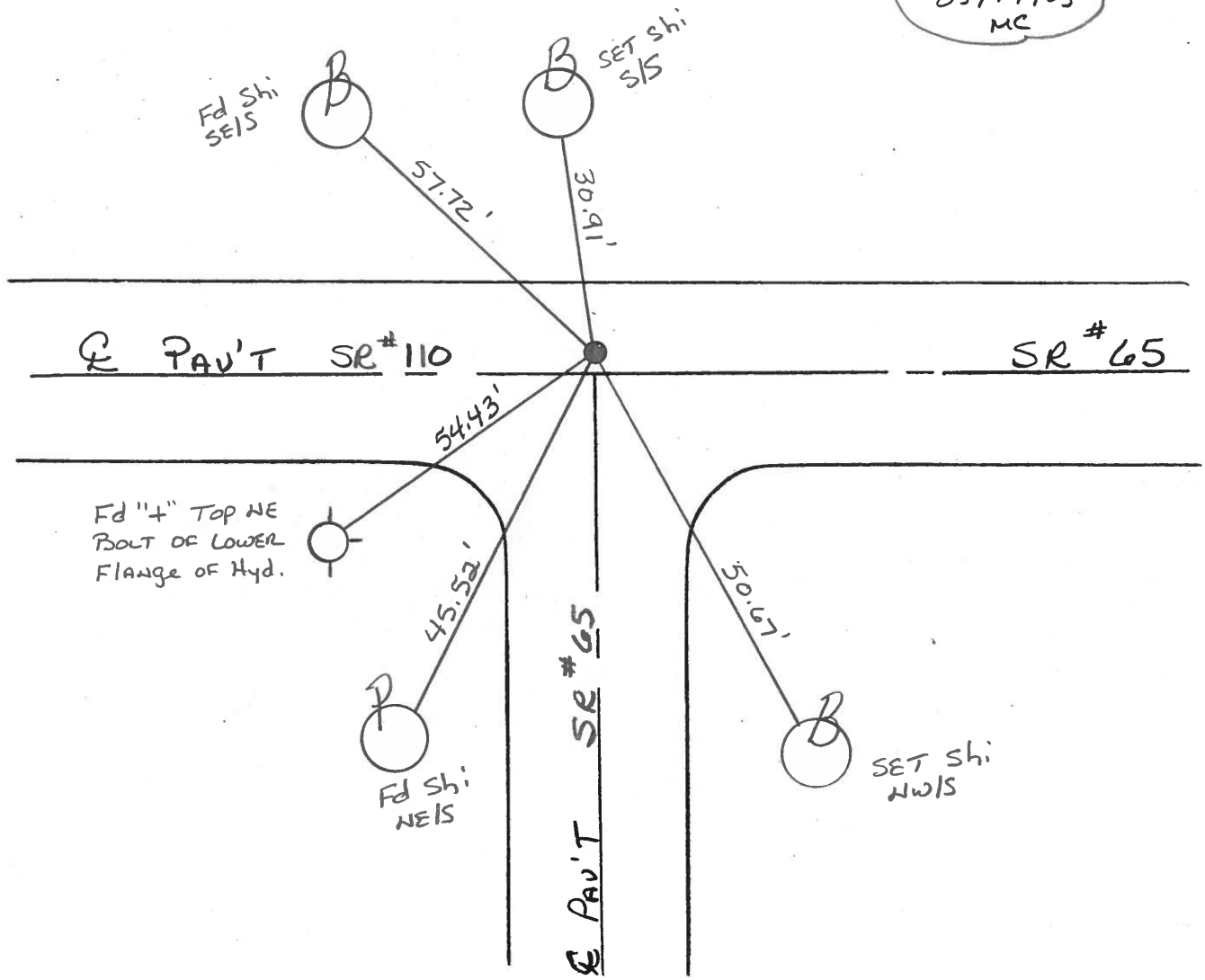
LEFT - 0 PAV'T. - RIGHT 1.1'

9.8' TO LT EDGE PAVEMENT

S.L.M. 901+77 ON E PAV'T SOUTH



Reset Mag Nail & Washer
05/19/03
MC



O.D.O.T. DISTRICT 2 SURVEY OFFICE

PERSONNEL _____

REFERENCE NO. 34

SHEET _____ OF _____

NOTES LONG

H.C. VANDUSEN

R.C. BARNHISEL

DATE 9-19-91

WEATHER CLEAR

TEMP. +56° F

ROUTE SR 65

COUNTY HENRY

TOWNSHIP DAMASCUS

SECTION 9

T 5 N R 8 E

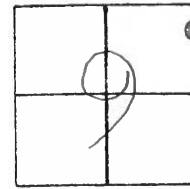
TYPE MONUMENT PK/WASHER

ON SURFACE - BELOW YES

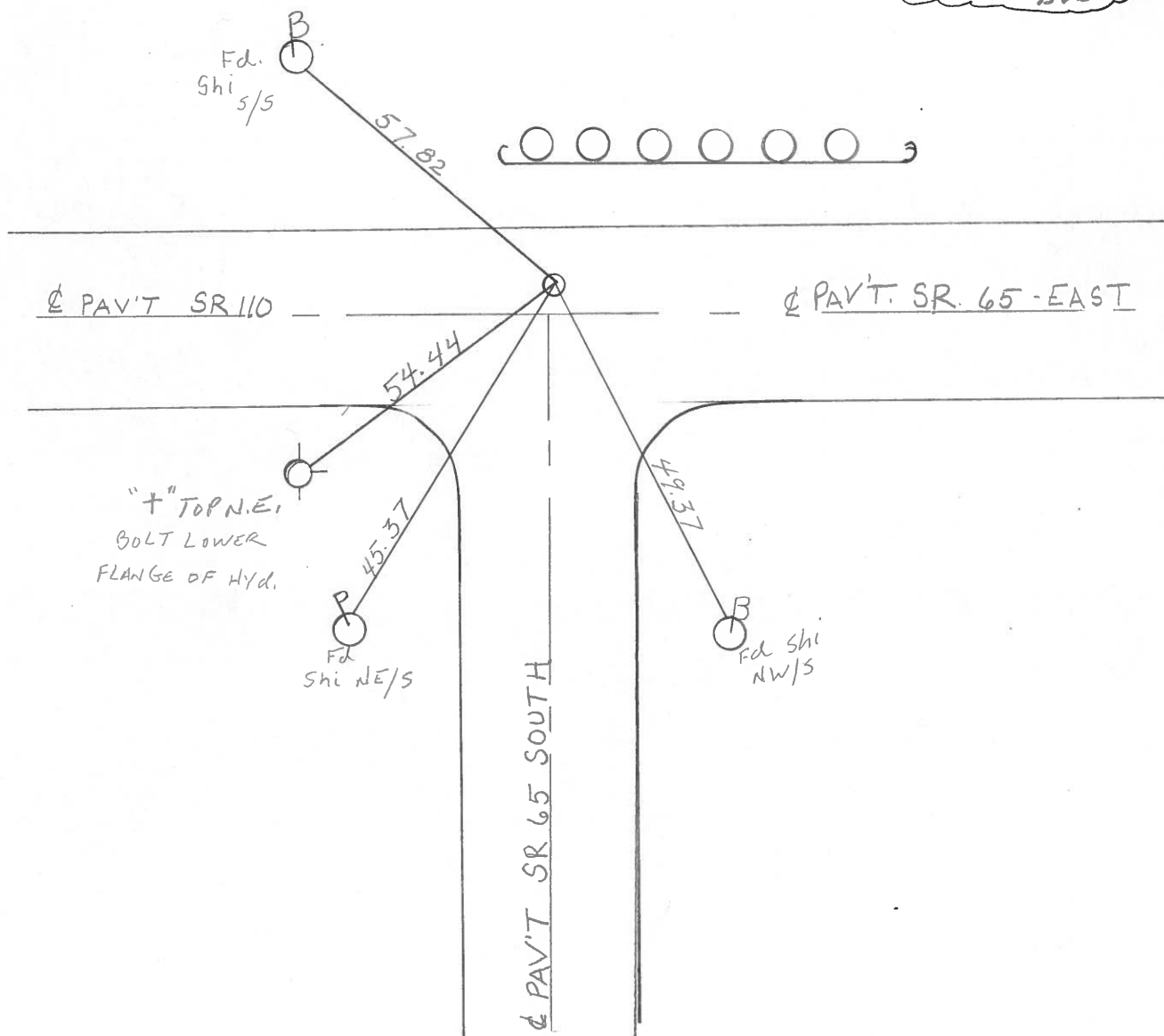
LEFT - Q PAV'T. - RIGHT YES, SR 65 - SOUTH

8-8, TO LT. EDGE PAVEMENT

S.L.M. 902+89



SET P.K./WASHER
 3-5-92
 BVD



O.D.O.T. DISTRICT 2 SURVEY OFFICE

PERSONNEL _____

REFERENCE NO. 34

SHEET _____ OF _____

NOTES BARNHISEL

H.C. SOCKMAN

R.C. _____

DATE 5-14-87

WEATHER SUNNY

TEMP. +75°

ROUTE SR 65

COUNTY HENRY

TOWNSHIP DAMASCUS

SECTION 9

T S N R & E

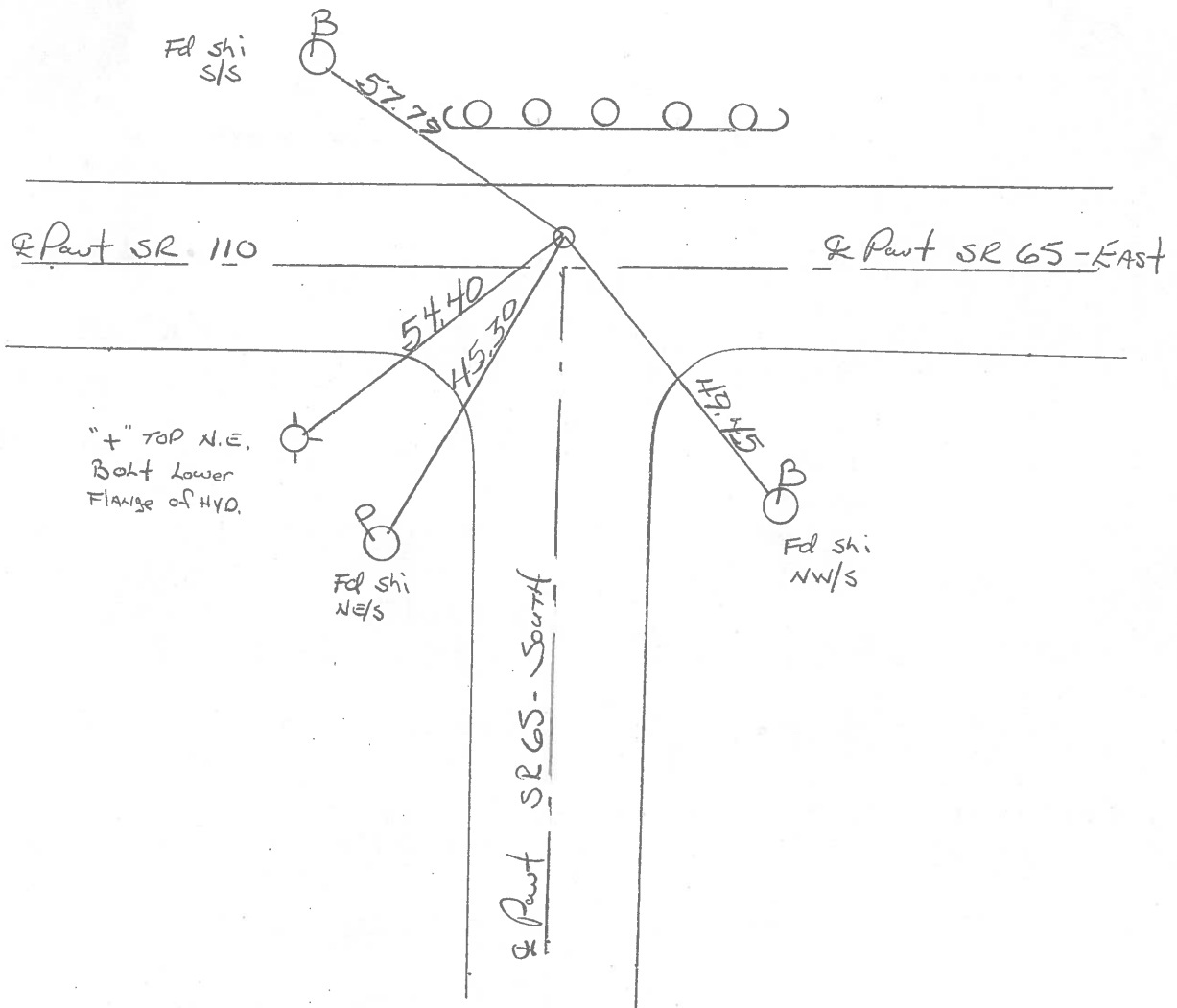
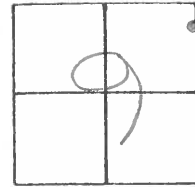
TYPE MONUMENT P.K. / WASHER

ON SURFACE - ~~BELOW~~ Yes

~~LEFT - & PAV'T. - RIGHT~~ Yes, SR 65 - SOUTH

8.5' TO LT EDGE PAVEMENT 1.0' Lt. & Pavt 65 - EAST

S.L.M. 902 + 89



Q.D.O.T. DISTRICT 2 SURVEY OFFICE

SHEET _____ OF _____

County HENRY S.R. 65

Date 2-2-84

Township DAMASCUS

Weather Clear

Section 9

Temp. +30°

T5N, R8E

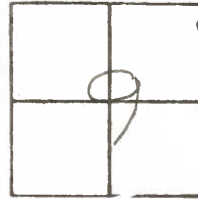
Personnel HOFFMAN

LOEHRKE H.C.

HOUSEHOLDER R.C.

BARNHISEL

#34



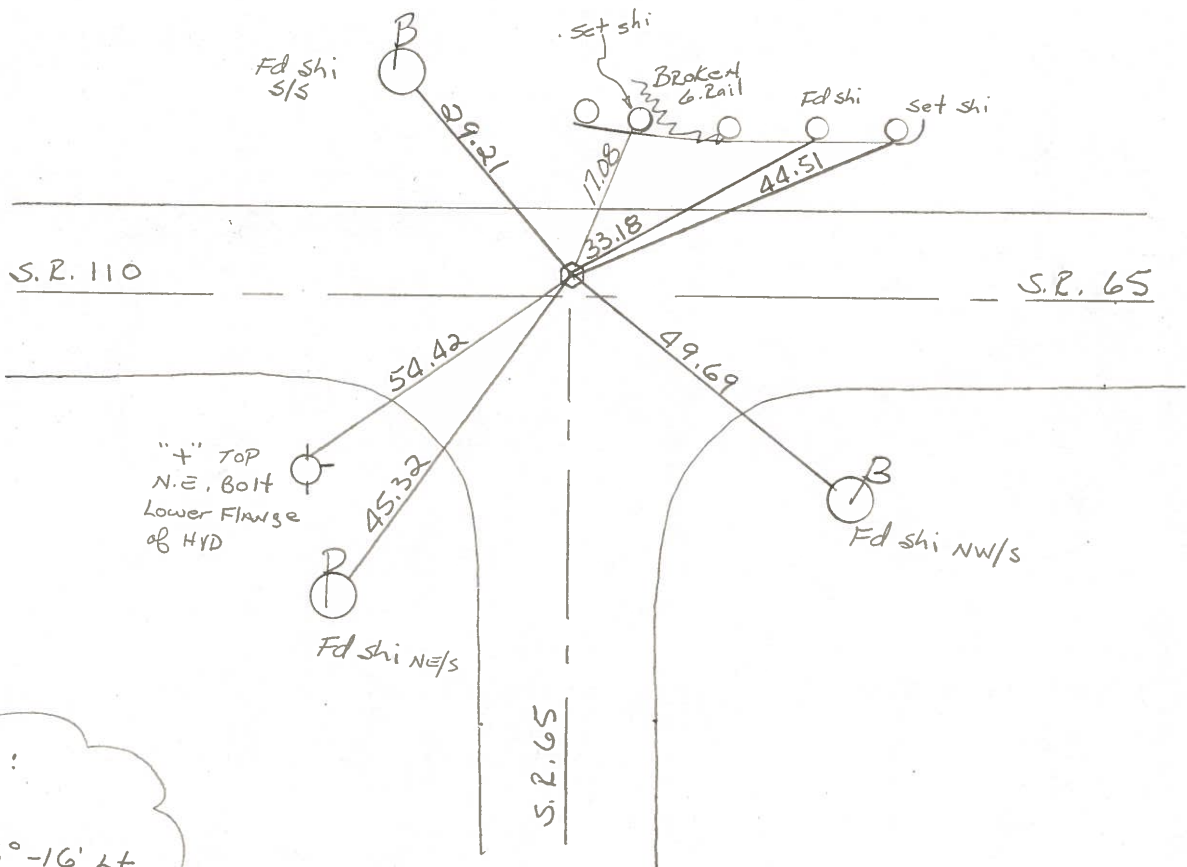
Fd small R.P. Spk @ surface
 ON & PAUT SR65-S
 1.0' Lt. & PAUT SR65-E
 8.5' TO Lt. EP

SLM 902+88

SET PK/WASHER

9-17-84

S.W.H.

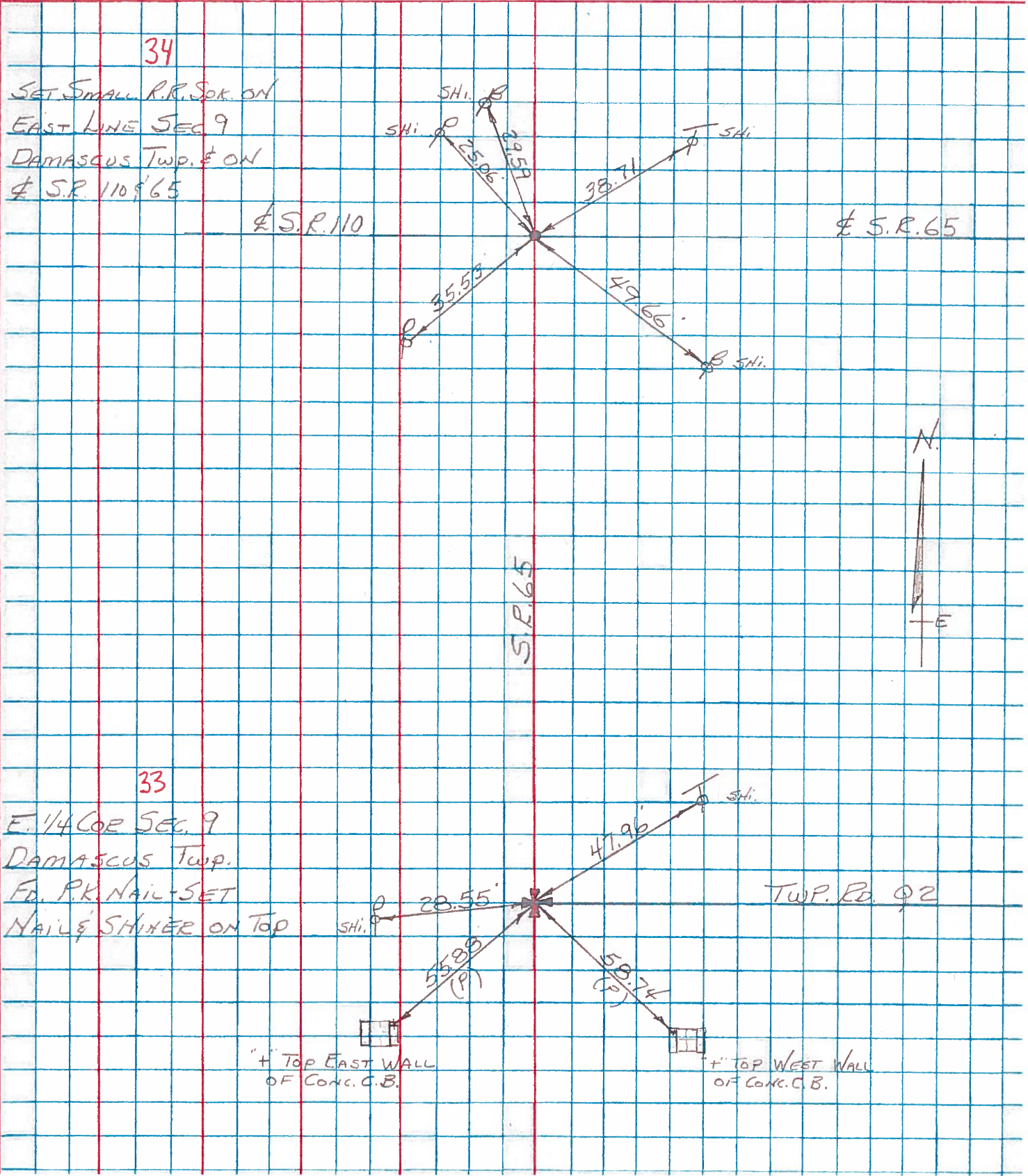


Record:
 P.I.
 $\Delta = 3^\circ - 16' \text{ Lt.}$

PERSONNEL	TITLE	PERSONNEL	TITLE
BURNSIDE			
BOWERS			
MEAD			

COUNTY HENRY DATE 4-10-74
 S. R. 65 WEATHER CLEAR
 SEC. DAMASCUS Twp. TEMP. +40°

DESCRIPTION ± CONTROL TIES LEFT CENTER LINE RIGHT JOB NO. _____



38 m

PERSONNEL TITLE PERSONNEL TITLE

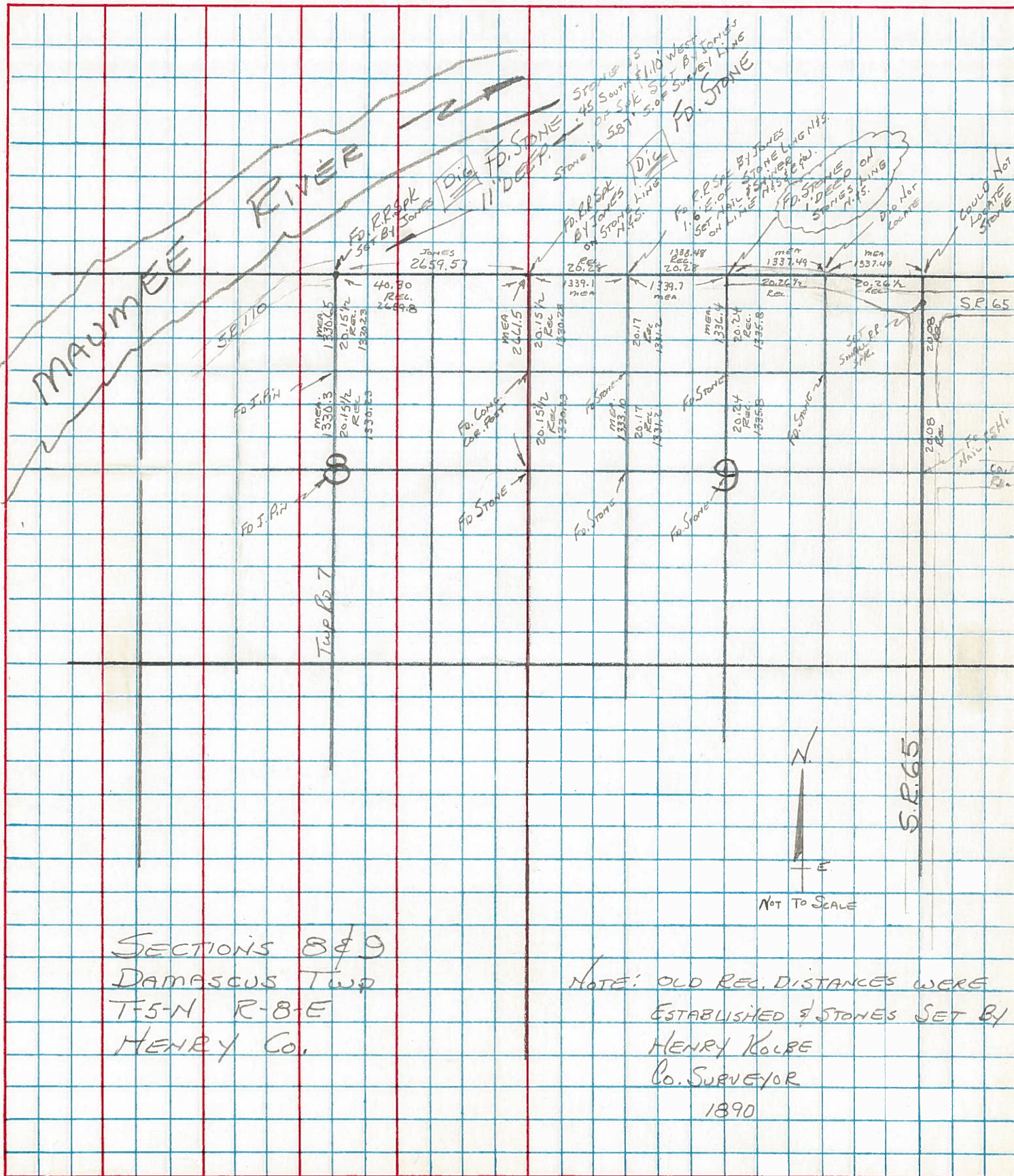
COUNTY HENRY DATE _____

S. R. 110 & 65 WEATHER _____

SEC. 8 & 9 TEMP. _____

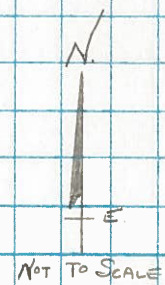
DESCRIPTION STONE LOCATION JOB NO. _____

LEFT CENTER LINE RIGHT



SECTIONS 8 & 9
 DAMASCUS TWP
 T-5-N R-8-E
 HENRY CO.

NOTE: OLD REC. DISTANCES WERE
 ESTABLISHED BY STONES SET BY
 HENRY KOLBE
 CO. SURVEYOR
 1890



HENRY COUNTY
DAMASCUS TWP.

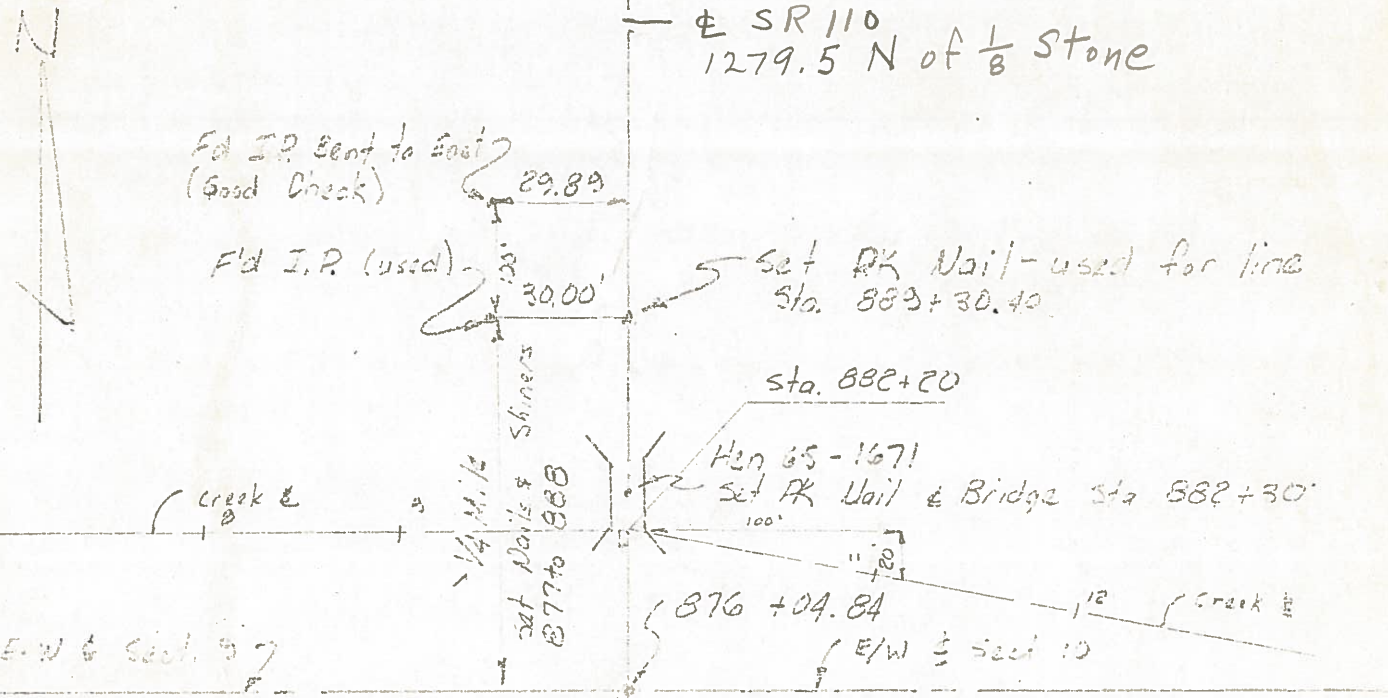
HEN 65-1620, 1671

6501
GRL = RTN Oct 13, 1965

Post has rotted & is gone
Did not find stone.

N. Line Section 9

N. Line Sect 10



F'd Nail 2" below
pav't surface.
Witnessed with Ticks
(3 of 1') used for 100

Compass Brg
51° 00' 20" N
2° 30' 15" E
1° 20' 15" N

