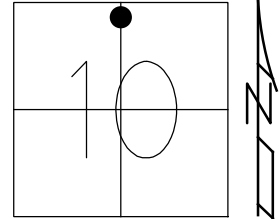


O.D.O.T. DISTRICT 2 SURVEY OFFICE (USE ONLY)

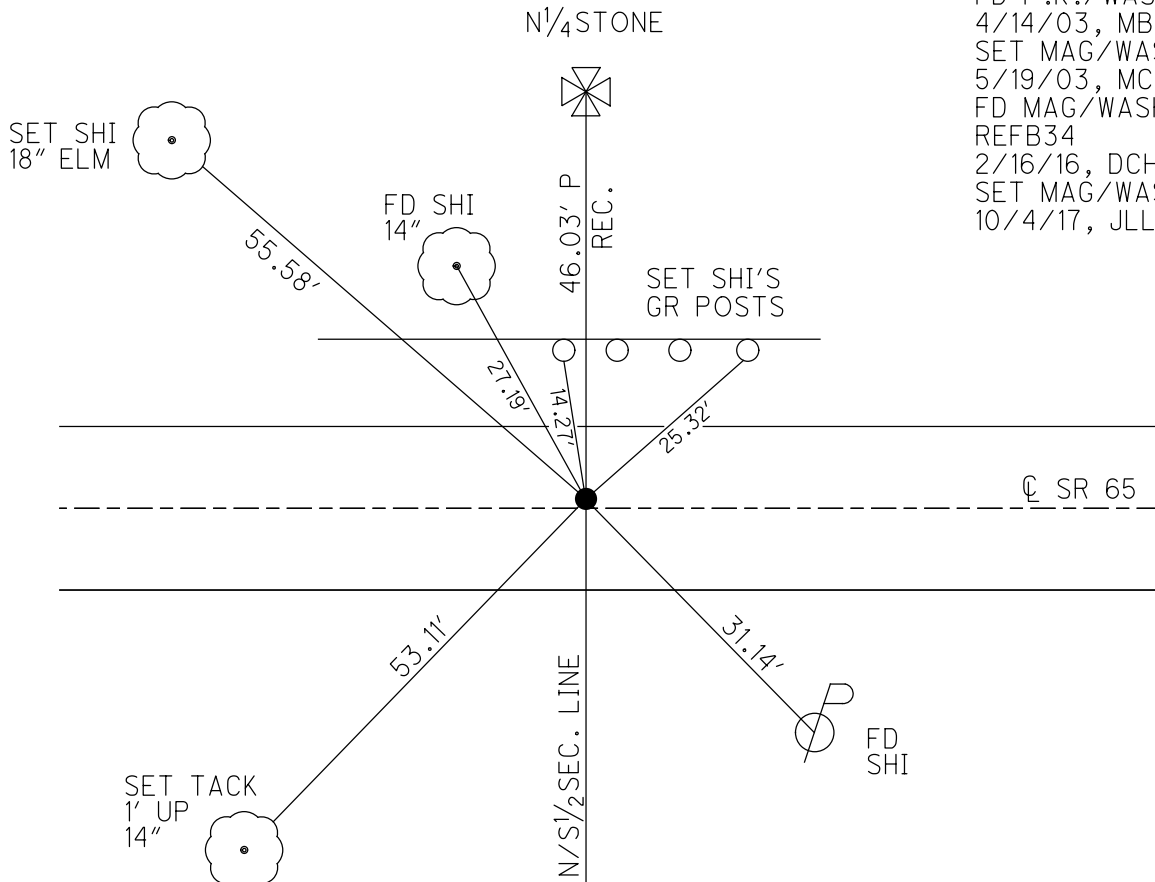
PERSONNEL \_\_\_\_\_ REFERENCE NO. 34 B SHEET 3 OF 24

NOTES LEU DATE 04-26-2017 ROUTE SR 65  
 H.C. LEU WEATHER SUNNY, WINDY COUNTY HENRY  
 R.C. HELDMAN TEMP. 56° TOWNSHIP DAMASCUS  
 SECTION 10  
 T 5 N R 8 E

TYPE MONUMENT MAG/WASHER  
 ON SURFACE - ~~BELOW~~ ON \_\_\_\_\_  
 LEFT - ☉ PAV'T - ~~RIGHT~~ 0.6'  
9.6' TO LT EDGE PAVEMENT  
 S.L.M. 929+03.94  
 Grid: Northing: 640226.256 Easting: 1575801.115



RECORD: P.O.T  
 POINT SET BY  
 BEACH NOV.1967  
 STA. 928+62.29  
 FD P.K./WASHER  
 4/14/03, MB  
 SET MAG/WASHER  
 5/19/03, MC  
 FD MAG/WASHER  
 REFB34  
 2/16/16, DCH  
 SET MAG/WASHER  
 10/4/17, JLL



# O.D.O.T. DISTRICT 2 SURVEY OFFICE

PERSONNEL

REFERENCE NO. 34-B SHEET 8 OF 28

NOTES BARNHISEL - HC

H.C. \_\_\_\_\_

R.C. GLASS

RJALL

DATE 04/14/03

WEATHER SUNNY

TEMP. +56°

ROUTE 65

COUNTY HENRY

TOWNSHIP DAMACUS

SECTION 10

T 5 N R 8 E

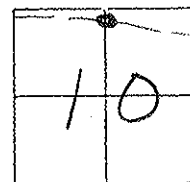
TYPE MONUMENT PK & WASHER

ON SURFACE - BELOW yes

LEFT - E PAV'T. - RIGHT 0.6'

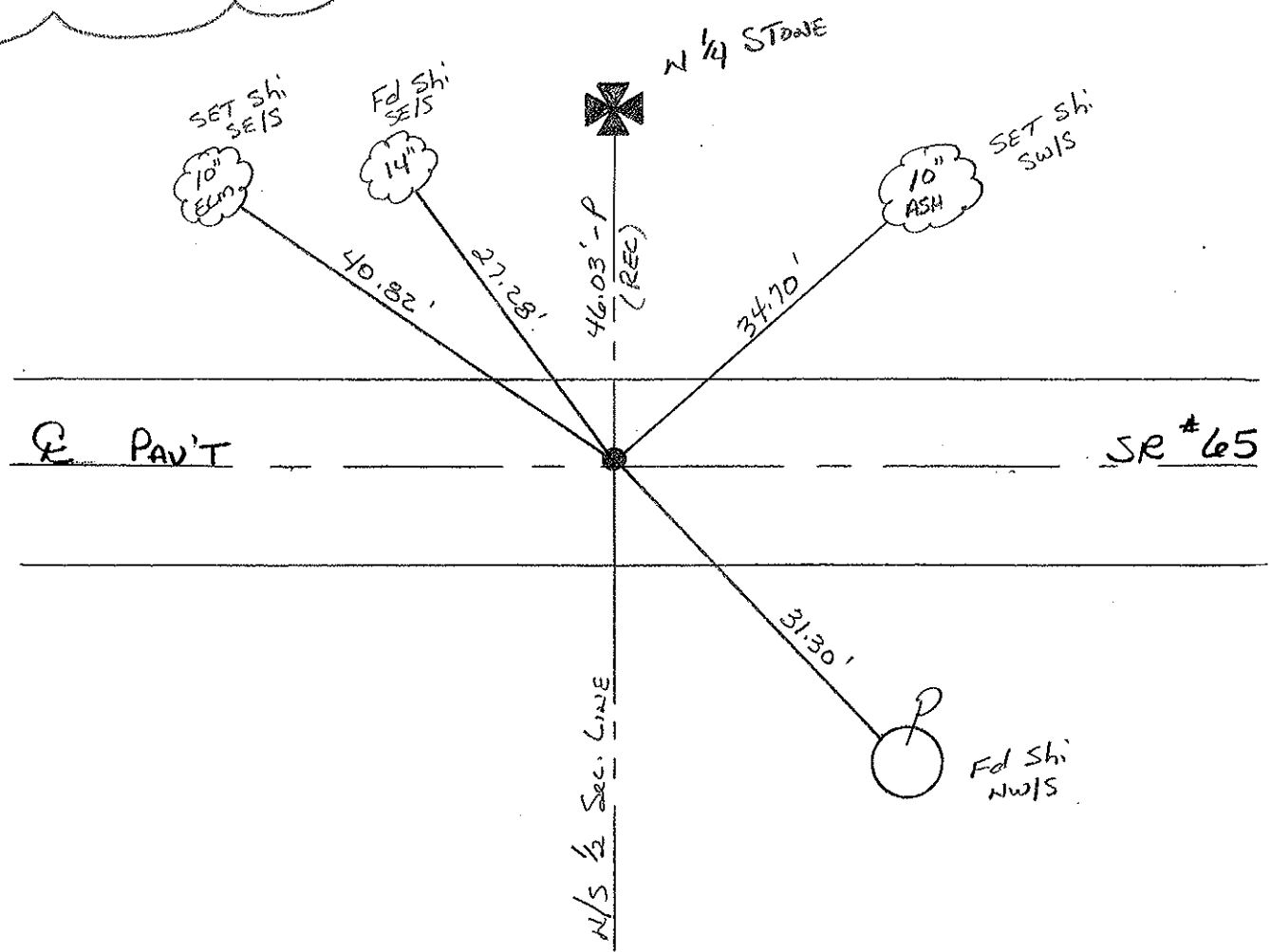
9.6' TO LT EDGE PAVEMENT

S.L.M. 928+54



RECORD: POINT BY  
BEACH NOV. 1967  
POT. STA: 928+62.29

RESET MAG NAIL & WASHER  
05/19/03  
MC



O.D.O.T. DISTRICT 2 SURVEY OFFICE

PERSONNEL

REFERENCE NO. 34-1

SHEET      OF     

NOTES VAN DUSEN

H.C. RIPPLE

DATE 2-20-91

ROUTE 65

R.C. BARBOUR

WEATHER CLEAR

COUNTY HENRY

GEYMAN

TEMP. +56° F

TOWNSHIP DAMASCUS

SECTION 10

T 5 N R 8 E

TYPE MONUMENT PK & WASHER

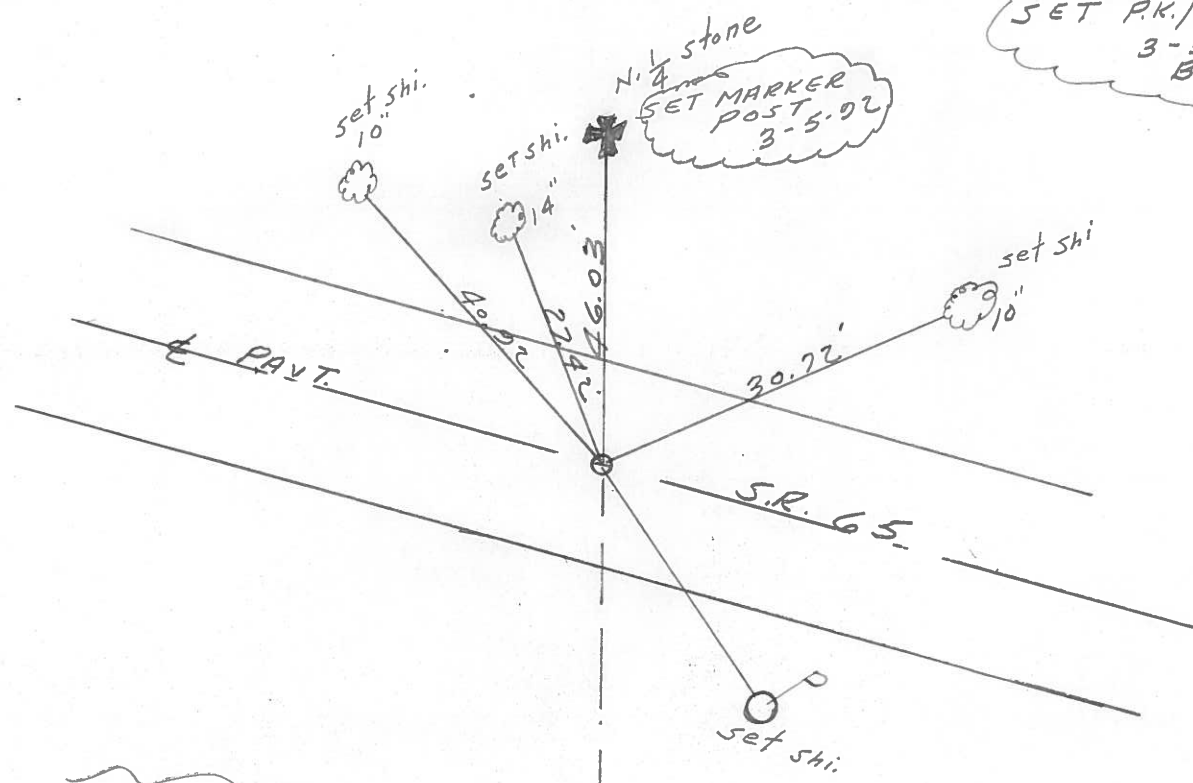
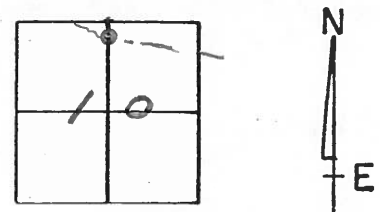
ON SURFACE - ~~BELOW~~ YES

~~LEFT - & PAV'T. - RIGHT~~ YES

2.2 TO LT. EDGE PAVEMENT

S.L.M. 929 + 65

34B



RECORD:  
POINT "I" BY  
BEACH NOV. 1967  
P.O.T. STA. 928 + 62.29

County HENRY S.R. 65

Township DAMASCUS

Section 10

T5N, R8E

Personnel HOFFMAN

LOEHRKE H.C.

HOUSEHOLDER R.C.

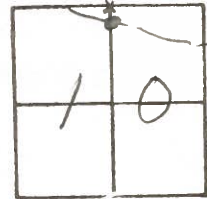
BARNHISEL

34B

Date 2-3-84

Weather cloudy

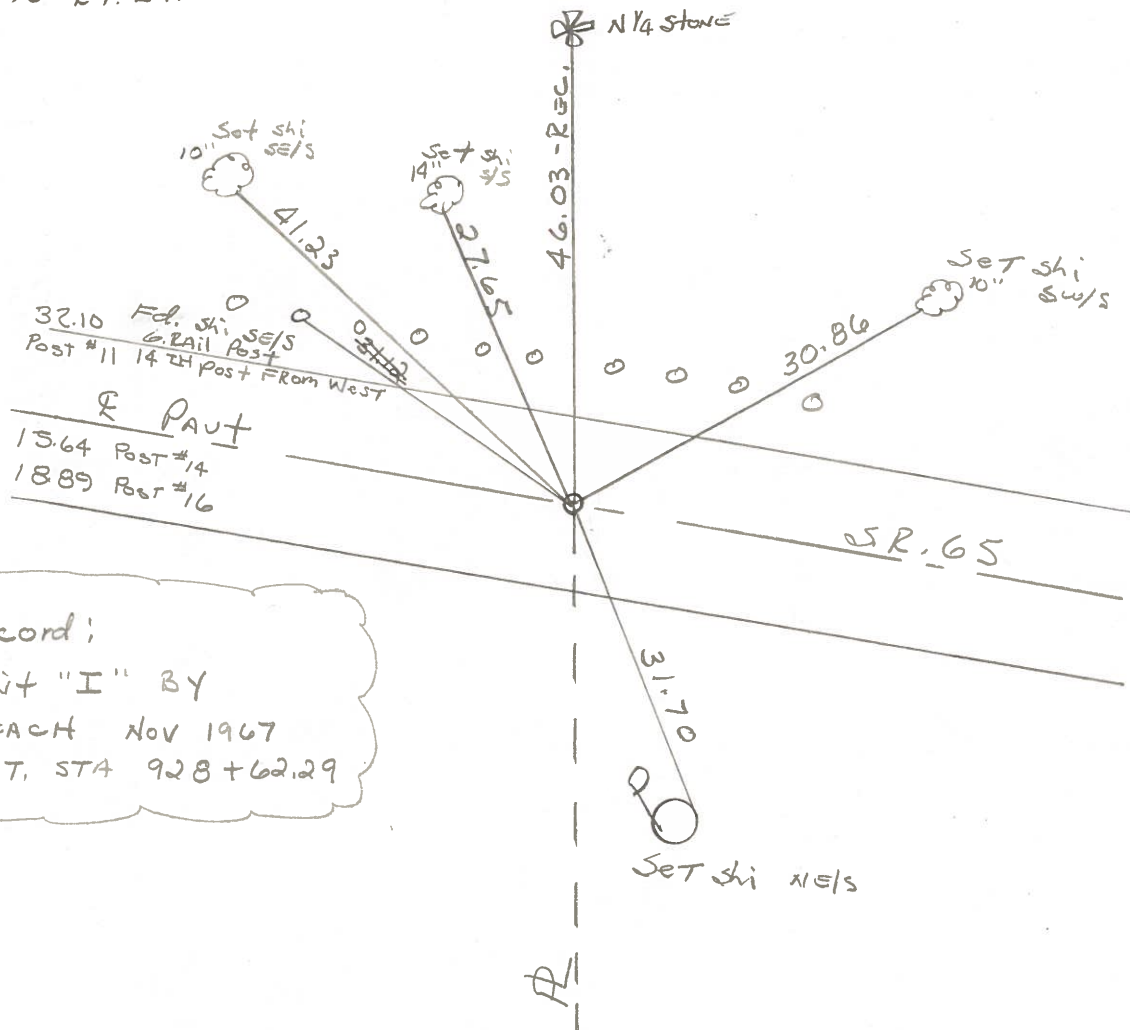
Temp. 30°



Fd 1/2" IRON PIPE 2" Below SURFACE  
 ON & PAUT  
 9.2' TO Lt. EP.  
 9.9' TO Rt. EP.

SLM 929+06

SET PK/WASHER  
 9-17-84  
 S.W.H.

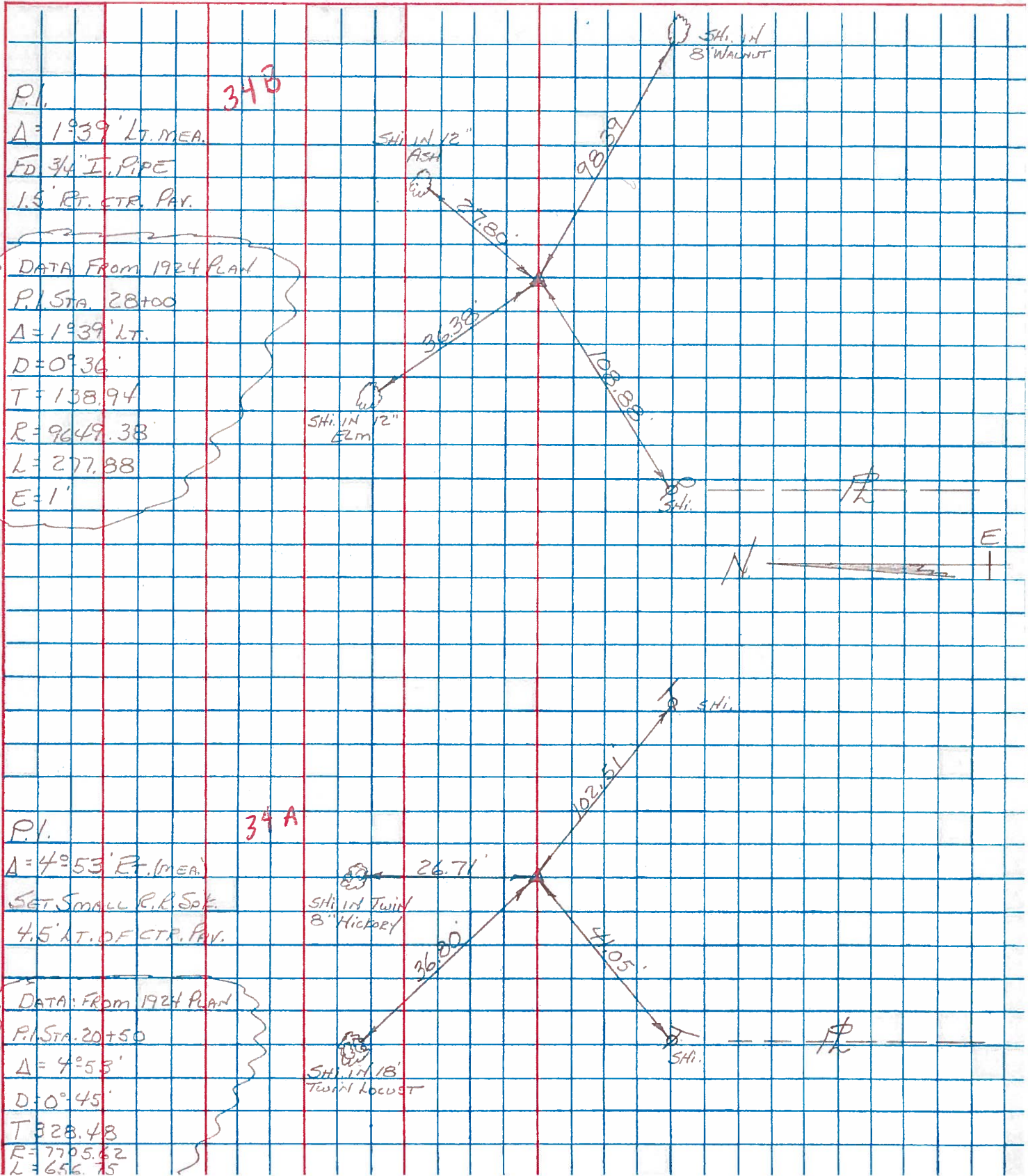


Record;  
 Point "I" BY  
 BLEACH NOV 1967  
 P.O.T. STA 928+62.29

SEE J.K. 110 FOR ENIG.  
S.P. 110 & S.P. 65

PERSONNEL	TITLE	PERSONNEL	TITLE	COUNTY	HENRY	DATE	3-5-74
BURNSIDE				S. R.	65	WEATHER	CLEAR
SMITH				SEC.		TEMP.	+46°
BOWERS							
MEAD							

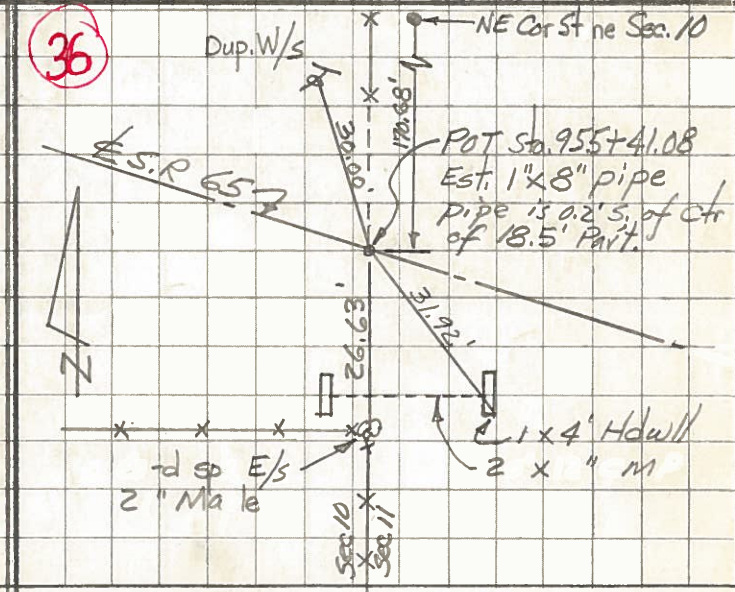
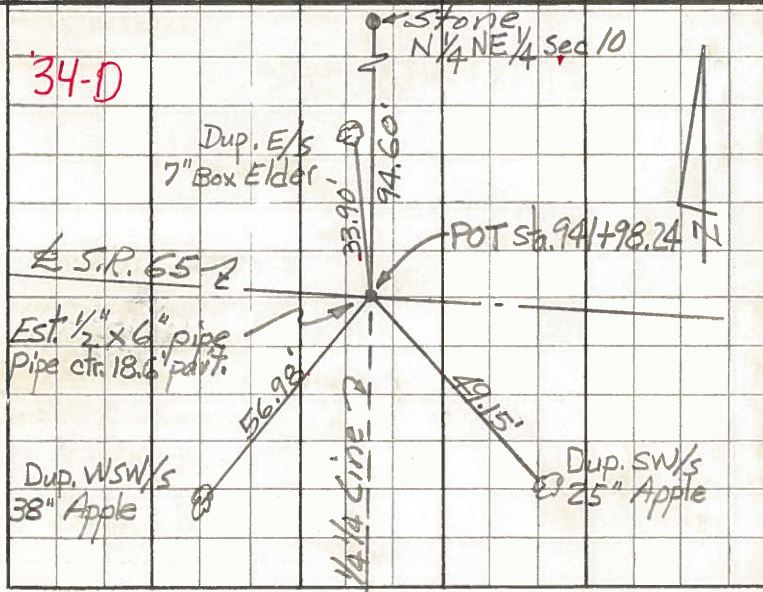
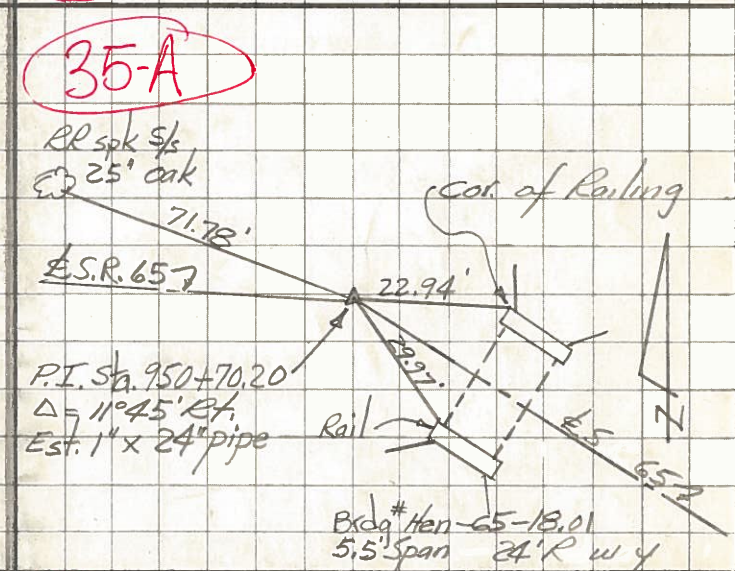
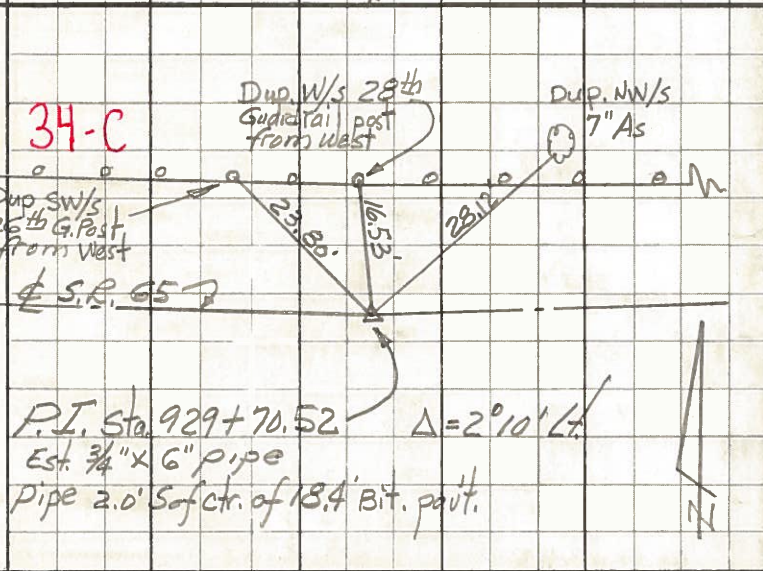
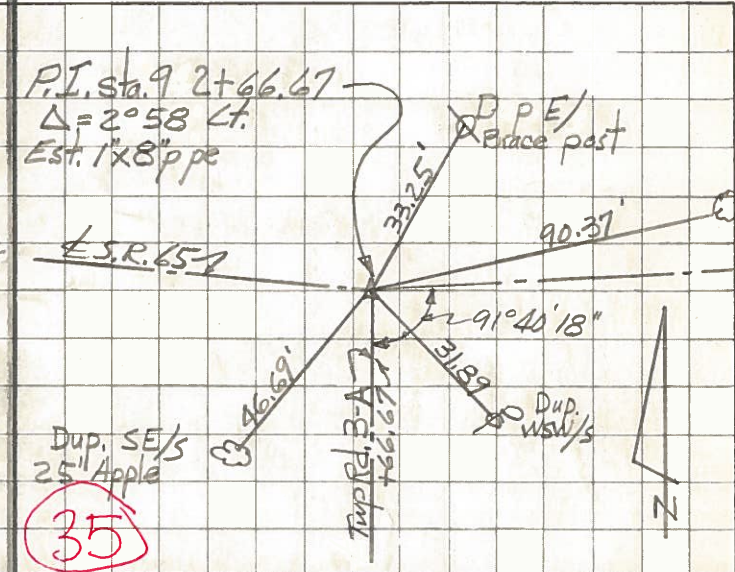
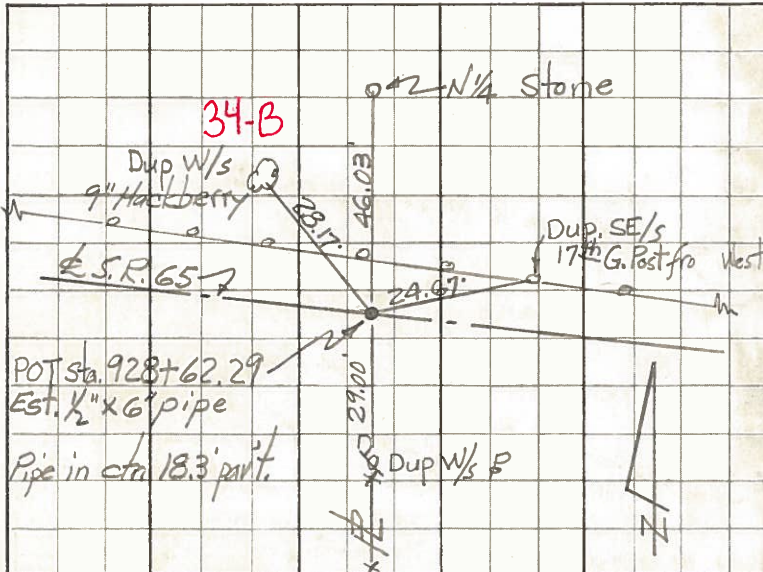
DESCRIPTION of Flow Control Ties LEFT CENTER LINE RIGHT JOB NO. \_\_\_\_\_



PERSONNEL TITLE PERSONNEL TITLE  
 Red Beach \_\_\_\_\_  
 Knape \_\_\_\_\_  
 Newcomb \_\_\_\_\_  
 Thompson \_\_\_\_\_

COUNTY Henry DATE Nov. 1967  
 S. R. 65 WEATHER \_\_\_\_\_  
 SEC. NE 1/4 Sec. 10 TEMP. \_\_\_\_\_

DESCRIPTION CONTROL Points Damascus TWP. JOB NO. \_\_\_\_\_  
 LEFT CENTER LINE RIGHT



PERSONNEL TITLE PERSONNEL TITLE

Red Beach

COUNTY HENRY

DATE Nov. 1967

W. Knape

S. R. 65

WEATHER

C. Newcomb

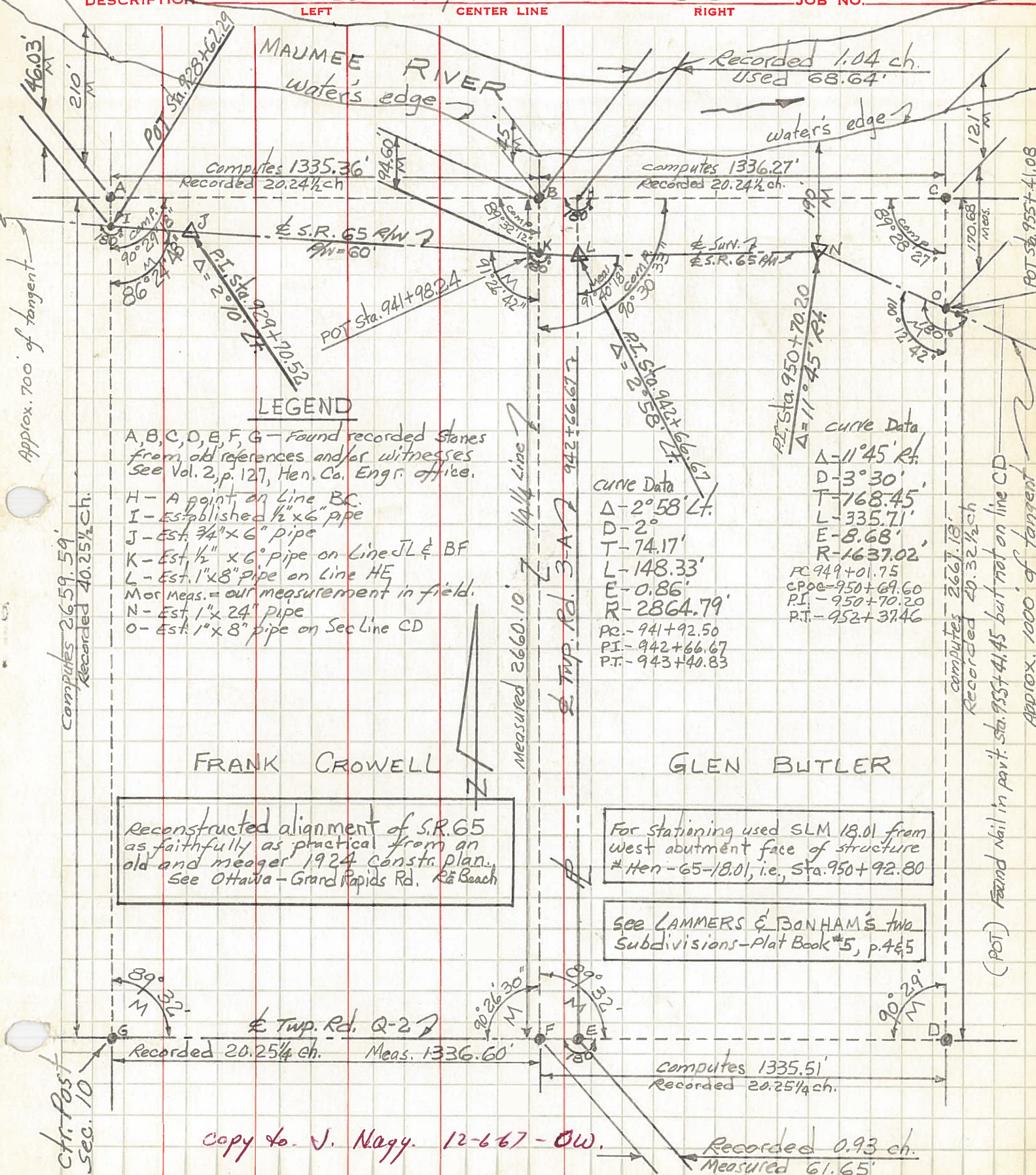
SEC. NE 1/4, Sec. 10

TEMP.

K. Thompson

DESCRIPTION DAMASCUS TWP. T-5-N R-8-E

JOB NO.



Approx. 700' of tangent

Computes 2659.59'  
Recorded 40.25 1/4 ch.

Measured 2660.10' 1/4 line

computes 2667.18'  
Recorded 40.32 1/2 ch

(POT) Found Nail in privt. sta. 955+41.45 but not on line CD  
Approx. 1000' of tangent

LEGEND

- A, B, C, D, E, F, G - Found recorded stones from old references and/or witnesses See Vol. 2, p. 127, Hen. Co. Engr. office.
- H - A point on Line BC.
- I - Established 1/2" x 6" pipe
- J - Est. 3/4" x 6" pipe
- K - Est. 1/2" x 6" pipe on Line JL & BF
- L - Est. 1" x 8" pipe on Line HE
- M or Meas. = our measurement in field.
- N - Est. 1" x 24" pipe
- O - Est. 1" x 8" pipe on Sec Line CD

CURVE DATA  
 $\Delta$  - 2° 58' Lt.  
 D - 2'  
 T - 74.17'  
 L - 148.33'  
 E - 0.86'  
 R - 2864.79'  
 PC - 941+92.50  
 PI - 942+66.67  
 PT - 943+40.83

CURVE DATA  
 $\Delta$  - 11° 45' Rt.  
 D - 3° 30'  
 T - 768.45'  
 L - 335.71'  
 E - 8.68'  
 R - 1637.02'  
 PC - 949+01.75  
 CPOC - 950+69.60  
 PI - 950+70.20  
 PT - 952+37.46

FRANK CROWELL

Reconstructed alignment of S.R. 65 as faithfully as practical from an old and meager 1924 constr. plan. See Ottawa - Grand Rapids Rd. R<sup>a</sup> Beach

GLEN BUTLER

For Stationing used SLM 18.01 from west abutment face of structure # Hen - 65-18.01, i.e., Sta. 950+92.80

See LAMMERS & BONHAM'S two Subdivisions - Plat Book #5, p. 465



copy to J. Naggy. 12-6-67 - OW.

Recorded 0.93 ch.  
Measured 61.65'

PERSONNEL TITLE PERSONNEL TITLE

Red Beach  
Newcomb  
Knappe  
Thompson

COUNTY Henry DATE 21 Nov 67

S. R. 65 WEATHER

SEC. 10 Damascus Twp. TEMP.

DESCRIPTION CONTROL POINTS JOB NO.

LEFT CENTER LINE RIGHT

