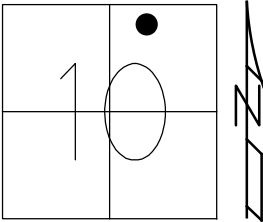


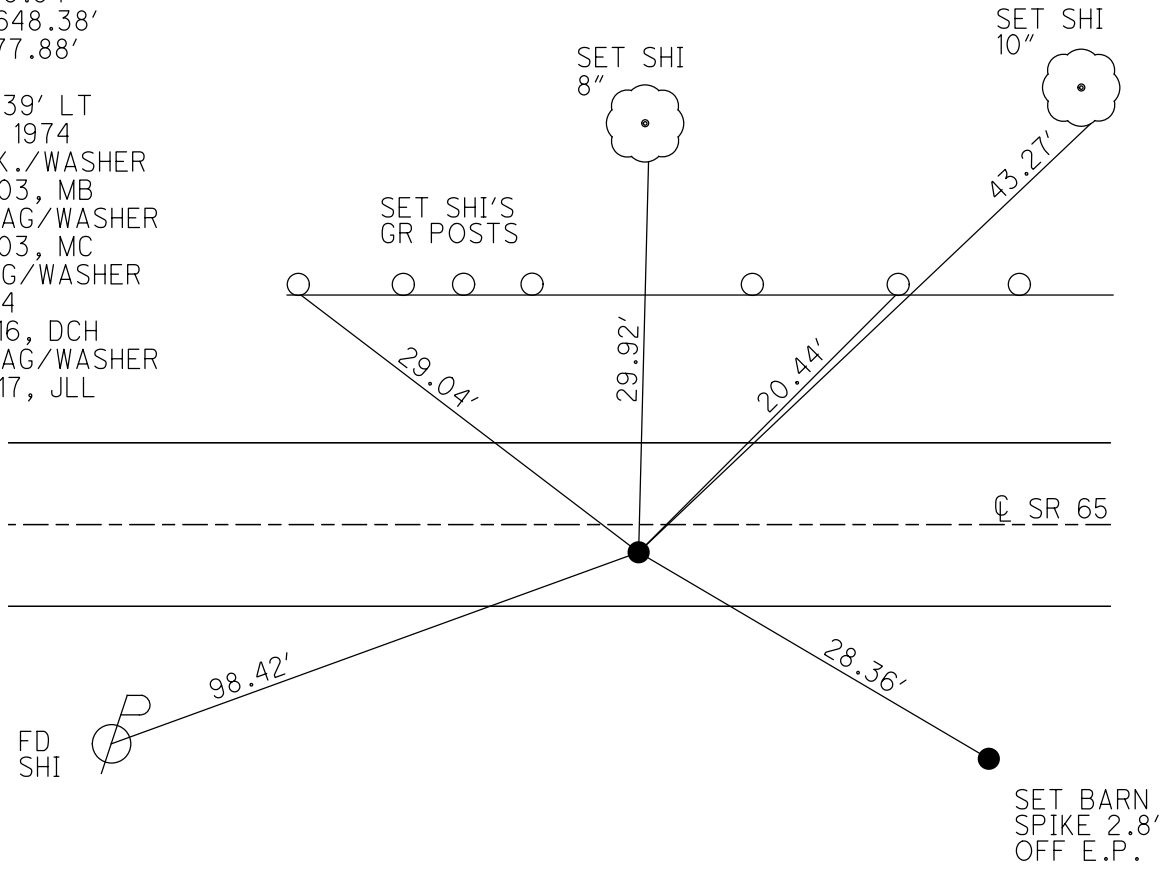
O.D.O.T. DISTRICT 2 SURVEY OFFICE (USE ONLY)

PERSONNEL \_\_\_\_\_ REFERENCE NO. 34 C SHEET 4 OF 24  
 NOTES HELDMAN DATE 4-26-17 ROUTE SR 65  
 H.C. LEU WEATHER SUNNY, WINDY COUNTY HENRY  
 R.C. HELDMAN TEMP. 83° TOWNSHIP DAMASCUS  
 \_\_\_\_\_ SECTION 10  
 \_\_\_\_\_ T 5 N R 8 E

TYPE MONUMENT P.K./WASHER  
 ON SURFACE - ~~BELOW~~ ON \_\_\_\_\_  
~~LEFT~~ - ☉ PAV'T - RIGHT 1.3'  
8.3' TO RT EDGE PAVEMENT  
 S.L.M. 930+12.16  
 Grid: Northing: 640217.704 Easting: 1575909.061



RECORD: P.I.  
 DATA FROM 1924 PLAN  
 STA. 20+50  
 $\Delta = 4^\circ-53' \text{ LT}$   
 $D = 0^\circ-36'-00''$   
 $T = 138.94'$   
 $R = 9648.38'$   
 $L = 277.88'$   
 $E = 1'$   
 $\Delta = 1^\circ39' \text{ LT}$   
 MEAS. 1974  
 FD P.K./WASHER  
 4/14/03, MB  
 SET MAG/WASHER  
 5/19/03, MC  
 FD MAG/WASHER  
 REFC34  
 2/16/16, DCH  
 SET MAG/WASHER  
 10/4/17, JLL



# O.D.O.T. DISTRICT 2 SURVEY OFFICE

PERSONNEL

REFERENCE NO. 34-C SHEET 9 OF 26

NOTES BARNHISEL - HC

H.C. \_\_\_\_\_

R.C. GLASS

Ryall

DATE 04/14/03

WEATHER SUNNY

TEMP. +56°

ROUTE 65

COUNTY HENRY

TOWNSHIP DAMACUS

SECTION 10

T 5 N R 8 E

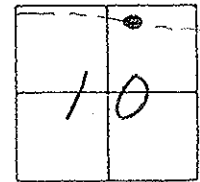
TYPE MONUMENT PK & WASHER

ON SURFACE - BELOW yes

LEFT - & PAV'T. - RIGHT 1.3'

8.3' TO RT. EDGE PAVEMENT

S.L.M. 929+62



RECORD: DATA FROM 1924 PLAN

PI STA = 28+00

$\Delta = 1^{\circ} 39' LT$

$D = 0^{\circ} 36'$

$T = 138.94'$

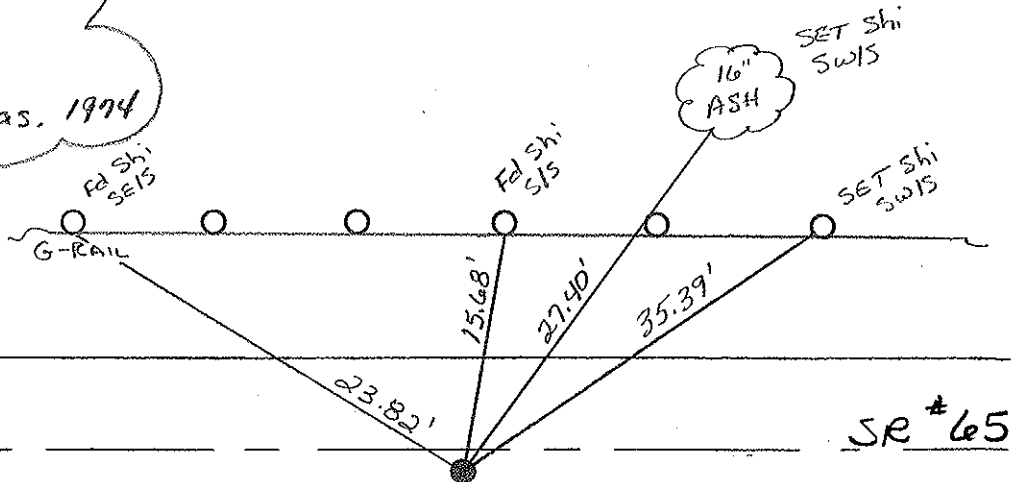
$R = 9648.38'$

$L = 277.88'$

$E = 1'$

PI  $\Delta = 1^{\circ} 39' LT$  MEAS. 1974

RESET MAG NAIL & WASHER  
05/19/03  
MC



# O.D.O.T. DISTRICT 2 SURVEY OFFICE

PERSONNEL

REFERENCE NO. 34-B

SHEET \_\_\_\_\_ OF \_\_\_\_\_

NOTES BARNHISEL

H.C. BARBOUR

DATE 9-20-91

ROUTE 65

R.C. Geyman

WEATHER CLEAR

COUNTY HENRY

Ripple

TEMP. +56°

TOWNSHIP DAMASCUS

SECTION 10

T 5 N R 8 E

TYPE MONUMENT Sm RR Spk

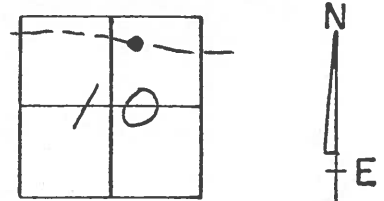
ON SURFACE - ~~BELOW~~ yes

~~LEFT - & PAV'T.~~ - RIGHT 1.6

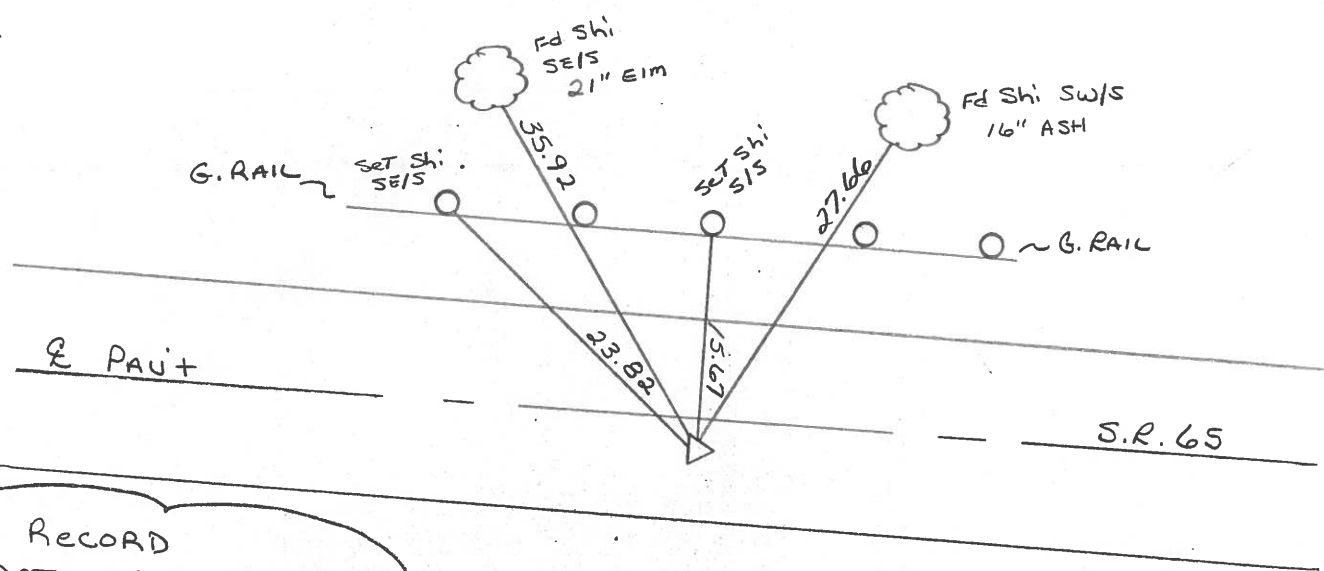
8.1 TO RT EDGE PAVEMENT

S.L.M. 930+73

34C



Set P.K. & Washer  
3-5-92  
mB



RECORD  
DATA FROM 1924 PLAN  
P.I. STA: 28+00  
 $\Delta = 1^\circ - 39' \text{ Lt.}$   
 $D = 0^\circ - 36'$   
 $T = 138.94$   
 $R = 9649.38$   
 $L = 277.88$   
 $E = 1'$   
P.I.  
 $\Delta = 1^\circ - 39' \text{ Lt. (MEAS. 1974)}$

County HENRY S.R. 65

Date 2-2-84

Township DAMASCUS

Weather Clear

Section 10

Temp. 30°

TSN, RØE

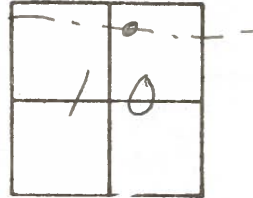
Personnel HOFFMAN

LOEHRKE H.C.

HOUSEHOLDER R.C.

BARNHISEL

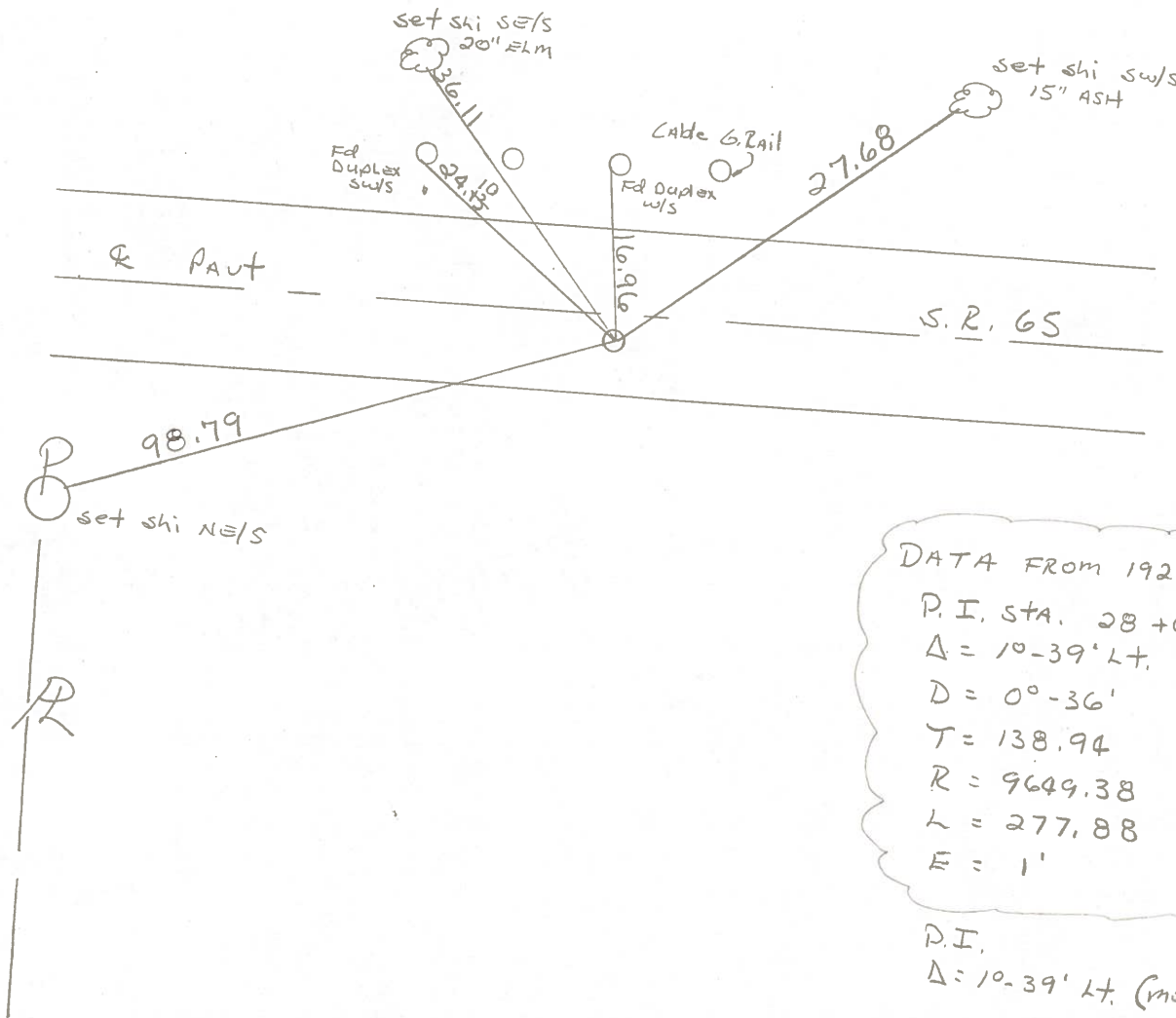
#34-B  
**34C**



Fd 3/4" IRON PIPE 1 1/2" Below Surface  
1.6' Rt. of & PAUT.  
8.1' TO RT. EP.  
10.5' TO LT. EP.

S.L.M. 930 + 15

SET SMALL RR SPIKE  
9-17-84  
BWH



DATA FROM 1924 PLAN  
P.I. STA. 28+00  
Δ = 10-39' LT.  
D = 0°-36'  
T = 138.94  
R = 9649.38  
L = 277.88  
E = 1'

P.I.  
Δ = 10-39' LT. (MEAS 1974)

PERSONNEL TITLE PERSONNEL TITLE

Red Beach

COUNTY Henry

DATE Nov. 1967

Knape

S. R. 65

WEATHER

Newcomb

SEC. NE 1/4 Sec. 10

TEMP.

Thompson

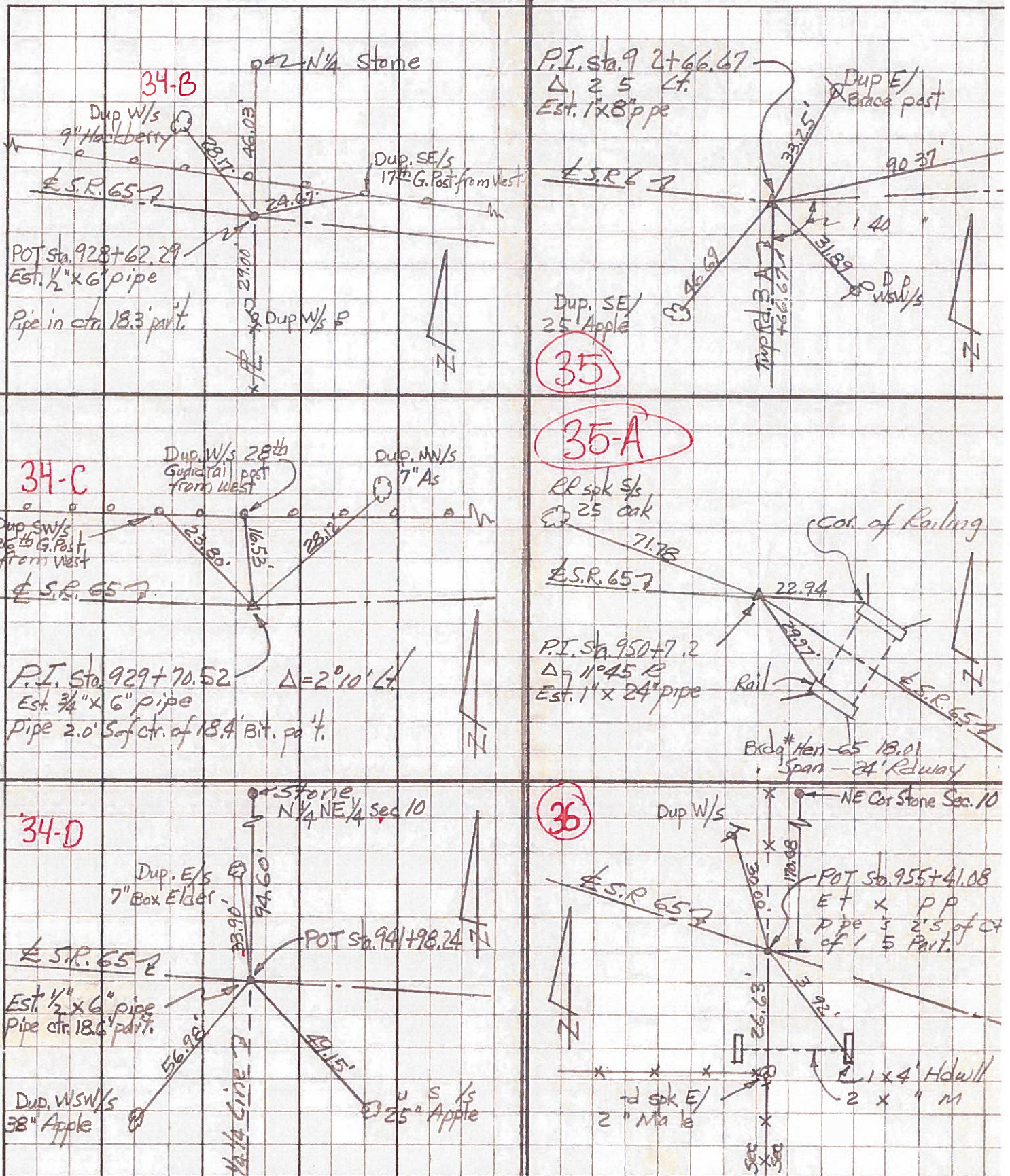
DESCRIPTION CONTROL POINTS DAMASCUS TWP.

JOB NO.

LEFT

CENTER LINE

RIGHT



PERSONNEL TITLE PERSONNEL TITLE

Red Beach

COUNTY HENRY

DATE Nov. 1967

W. Knape

S. R. 65

WEATHER

C. Newcomb

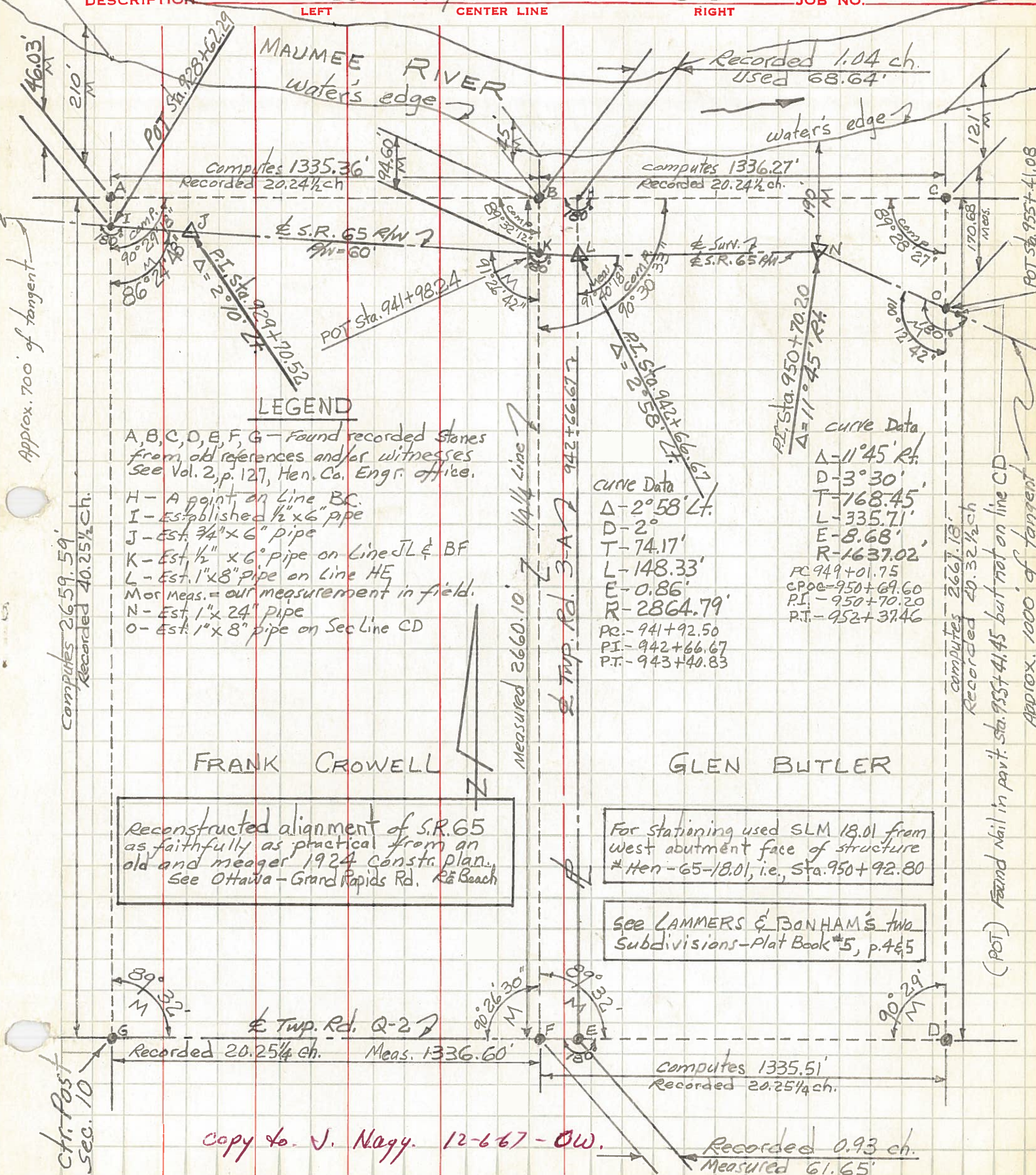
SEC. NE 1/4, Sec. 10

TEMP.

K. Thompson

DESCRIPTION DAMASCUS TWP. T-5-N R-8-E

JOB NO.



Approx. 700' of tangent

Computes 2659.59' Recorded 40.25 1/4 ch.

computes 2667.18' Recorded 40.32 1/2 ch

(POT) Found Nail in privt. sta. 955+41.45 but not on line CD Approx. 1000' of tangent

LEGEND

- A, B, C, D, E, F, G - Found recorded stones from old references and/or witnesses See Vol. 2, p. 127, Hen. Co. Engr. office.
- H - A point on Line BC.
- I - Established 1/2" x 6" pipe
- J - Est. 3/4" x 6" pipe
- K - Est. 1/2" x 6" pipe on Line JL & BF
- L - Est. 1" x 8" pipe on Line HE
- M or Meas. = our measurement in field.
- N - Est. 1" x 24" pipe
- O - Est. 1" x 8" pipe on Sec Line CD

CURVE DATA  
 $\Delta$  - 2° 58' Lt.  
 D - 2'  
 T - 74.17'  
 L - 148.33'  
 E - 0.86'  
 R - 2864.79'  
 PC - 941+92.50  
 PI - 942+66.67  
 PT - 943+40.83

CURVE DATA  
 $\Delta$  - 11° 45' Rt.  
 D - 3° 30'  
 T - 768.45'  
 L - 335.71'  
 E - 8.68'  
 R - 1637.02'  
 PC - 949+01.75  
 CPOC - 950+69.60  
 PI - 950+70.20  
 PT - 952+37.46

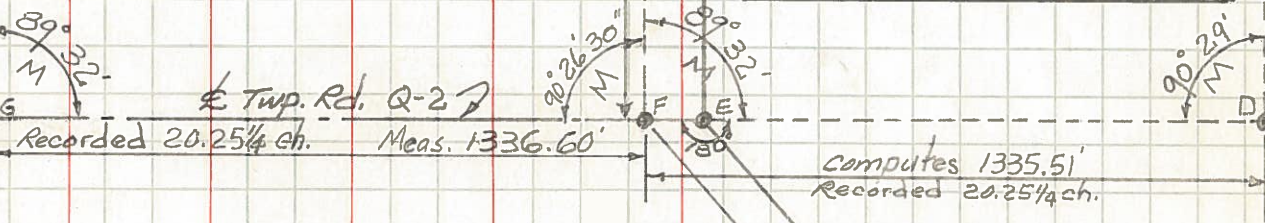
FRANK CROWELL

Reconstructed alignment of S.R. 65 as faithfully as practical from an old and meager 1924 constr. plan. See Ottawa - Grand Rapids Rd. R<sup>2</sup> Beach

GLEN BUTLER

For Stationing used SLM 18.01 from west abutment face of structure # Hen - 65-18.01, i.e., Sta. 950+92.80

See LAMMERS & BONHAM'S two Subdivisions - Plat Book #5, p. 465



copy to J. Naggy. 12-6-67 - OW.

Recorded 0.93 ch. Measured 61.65'