

O.D.O.T. DISTRICT 2 SURVEY OFFICE (USE ONLY)

PERSONNEL _____ REFERENCE NO. 34 D SHEET 5 OF 24

NOTES RHOADES DATE 4-27-17 ROUTE SR 65

H.C. LEU WEATHER CLOUDY COUNTY HENRY

R.C. HELDMAN TEMP. 68° TOWNSHIP DAMASCUS

SECTION 10

T 5 N R 8 E

TYPE MONUMENT MAG/WASHER

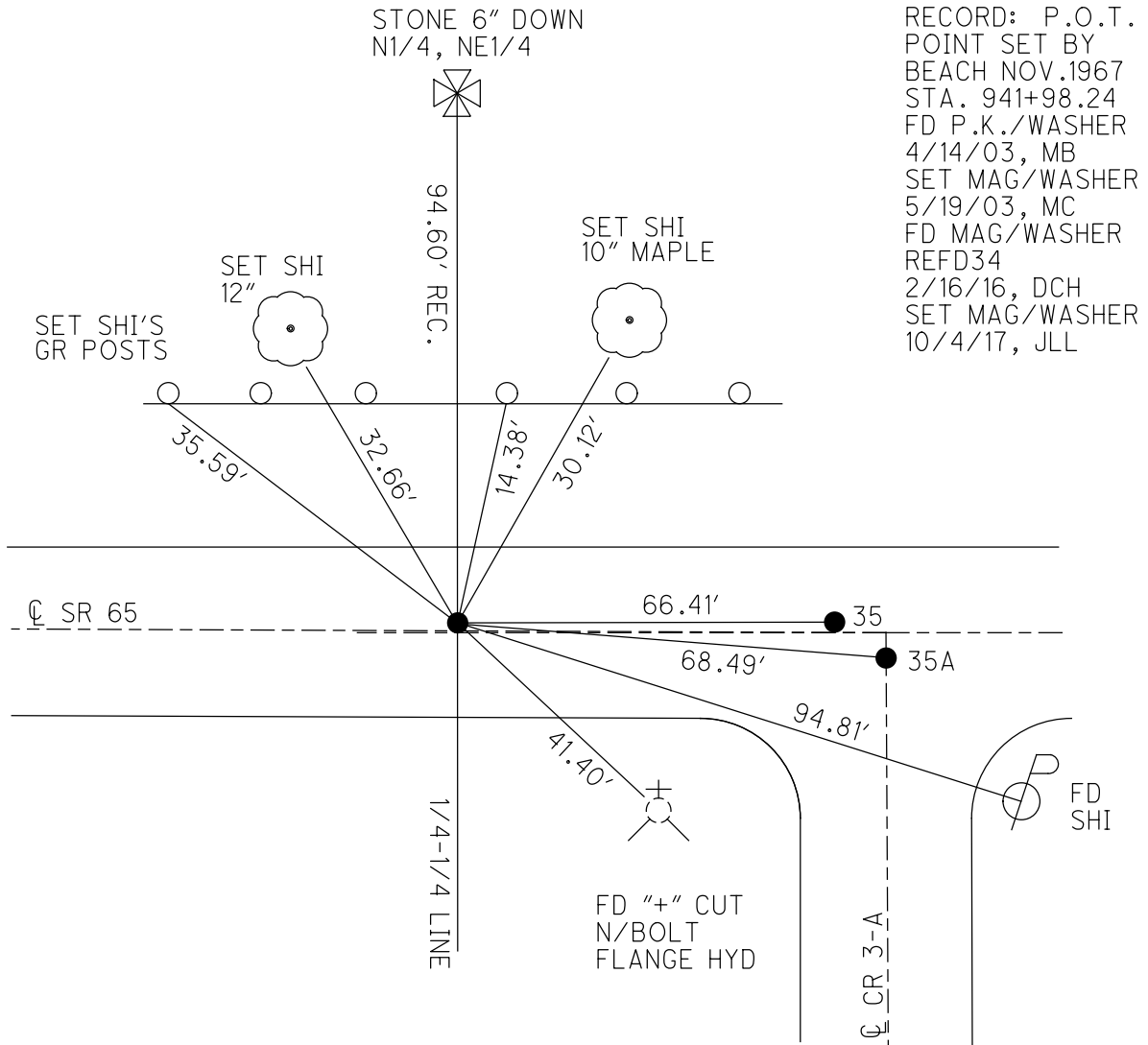
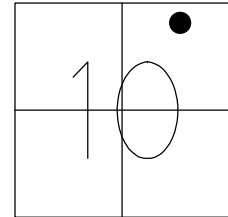
ON SURFACE - ~~BELOW~~ ON _____

~~LEFT~~ - CL PAV'T - RIGHT 0.6'

9.8' TO CT EDGE PAVEMENT

S.L.M. 942+39.61

Grid: Northing: 640167.636 Easting: 1577135.510



O.D.O.T. DISTRICT 2 SURVEY OFFICE

PERSONNEL

REFERENCE NO. 34-D SHEET 10 OF 26

NOTES BARNHISEL - HC

H.C. _____

DATE 04/14/03

ROUTE 65

R.C. GLASS

WEATHER SUNNY

COUNTY HENRY

RYALL

TEMP. +56°

TOWNSHIP DAMACUS

SECTION 10

T 5 N R 8 E

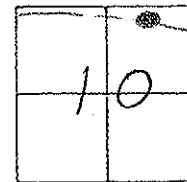
TYPE MONUMENT PK. WASHEN

ON SURFACE - BELOW yes

LEFT - & PAV'T. - RIGHT 0.6'

9.8' TO CT EDGE PAVEMENT

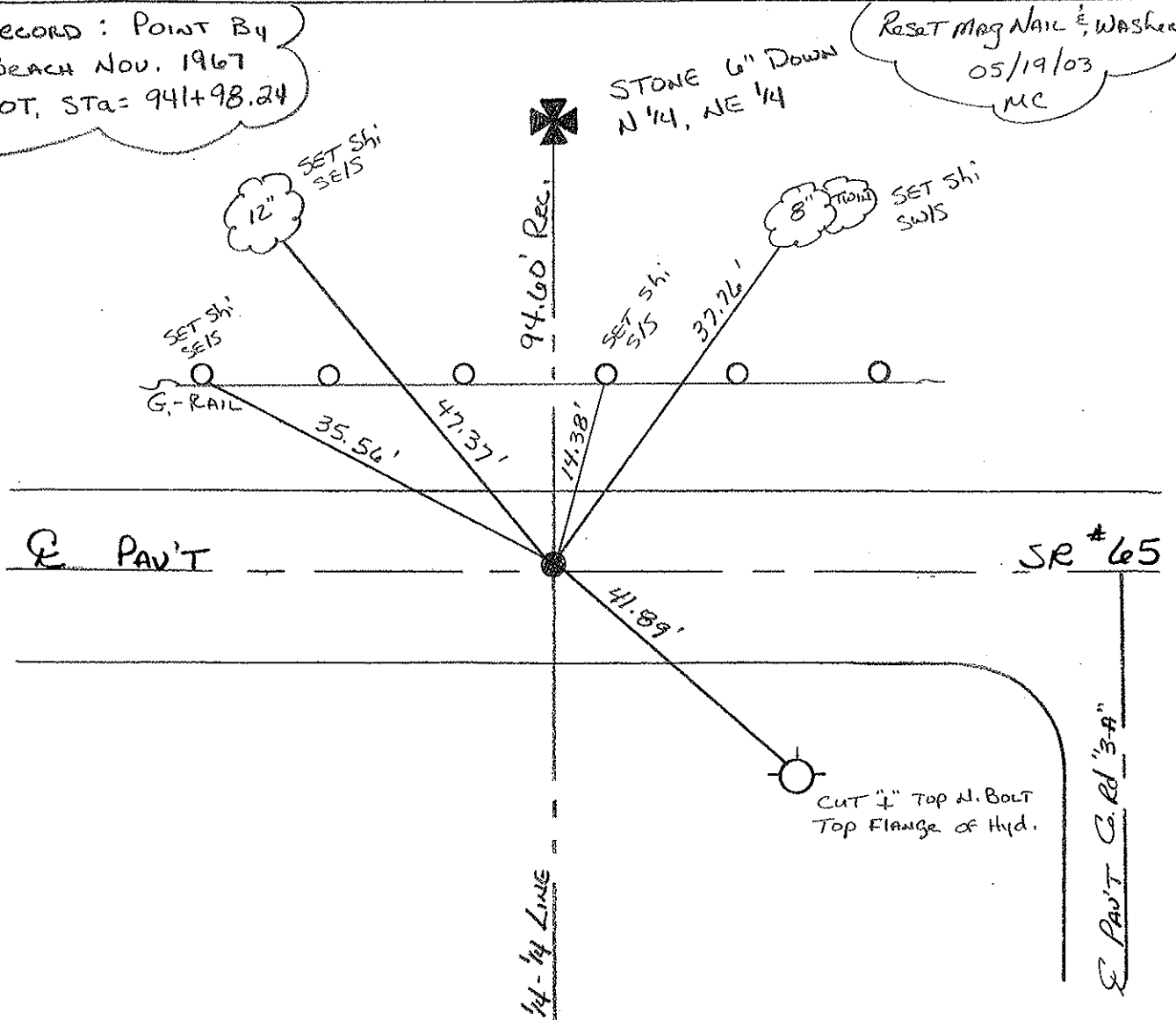
S.L.M. 941+89



Record: Point By
Beach Nov. 1967
POT, Sta = 941+98.24

STONE 6" Down
N 1/4, NE 1/4

Reset Mag Nail & Washer
05/19/03
MC



O.D.O.T. DISTRICT 2 SURVEY OFFICE

PERSONNEL

REFERENCE NO. 34-2

SHEET _____ OF _____

NOTES VAN DUSEN

H.C. RIPPLE

DATE 9-20-91

ROUTE 65

R.C. BARBOUR

WEATHER CLEAR

COUNTY HENRY

GEYMAN

TEMP. +56° F

TOWNSHIP DAMASCUS

SECTION 10

T.5 N R.8 E

TYPE MONUMENT P.K. & WASHER

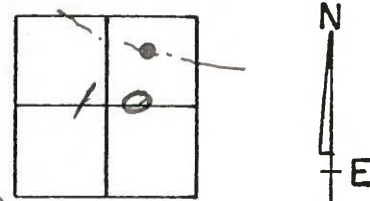
ON SURFACE - BELOW YES

LEFT- & PAV'T. - RIGHT YES 0.8'

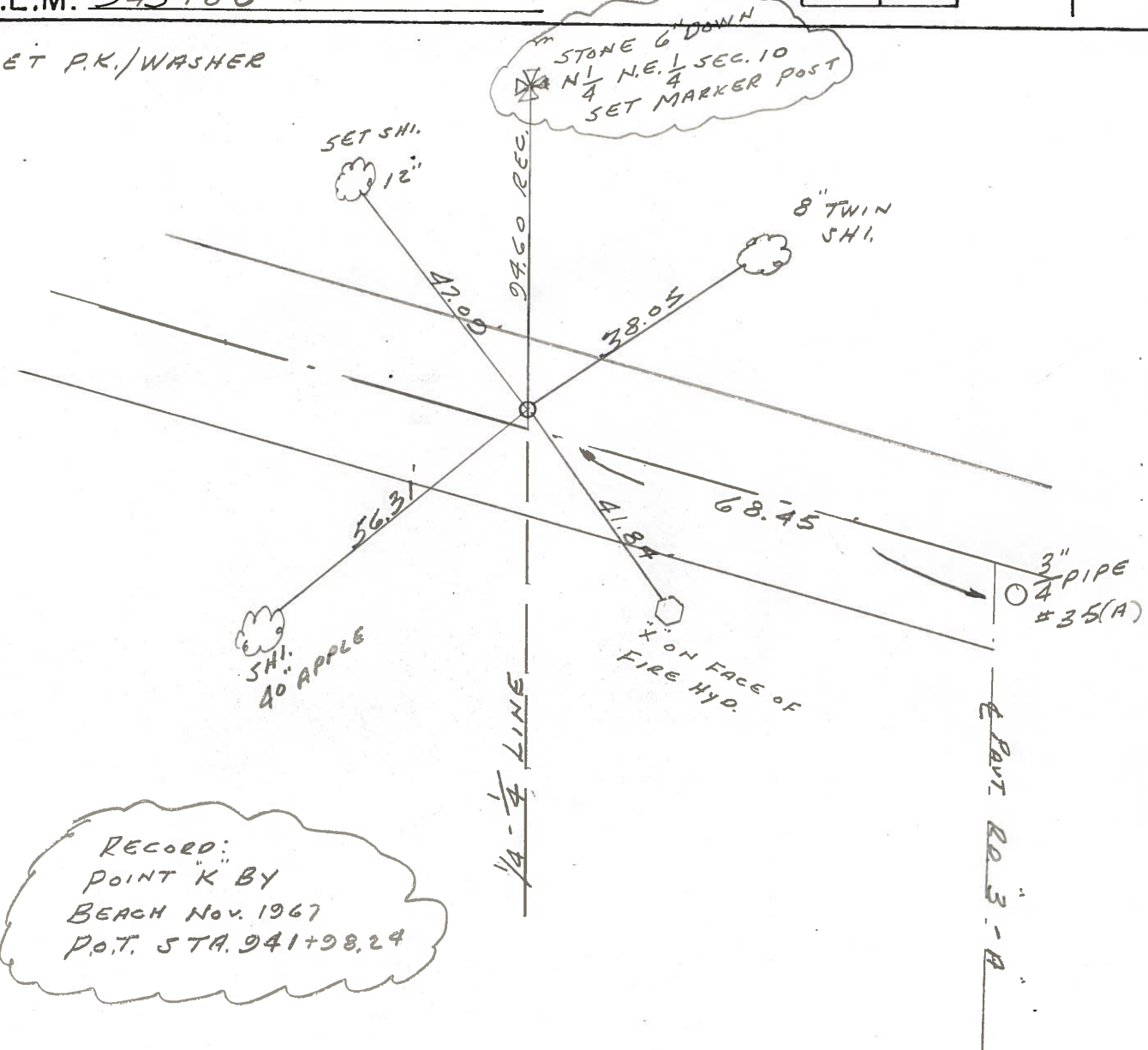
8.8 TO LT. EDGE PAVEMENT

S.L.M. 943+00

340



SET P.K./WASHER



RECORD:
 POINT K BY
 BEACH Nov. 1967
 P.O.T. STA. 941+98.24

County HENRY S.R. 65

Township DAMASCUS

Section 10

TSN, R&E

Personnel HOFFMAN

LOEHRLE H.C.

HOUSEHOLDER R.C.

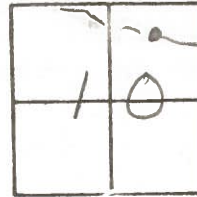
BARNHISEL

340

Date 2-3-84

Weather Cloudy

Temp. +30°



Fd 1/2" I. PIPE 2" BELOW SURFACE

0.8' LT. & PAUT

8.8' TO LT. EP.

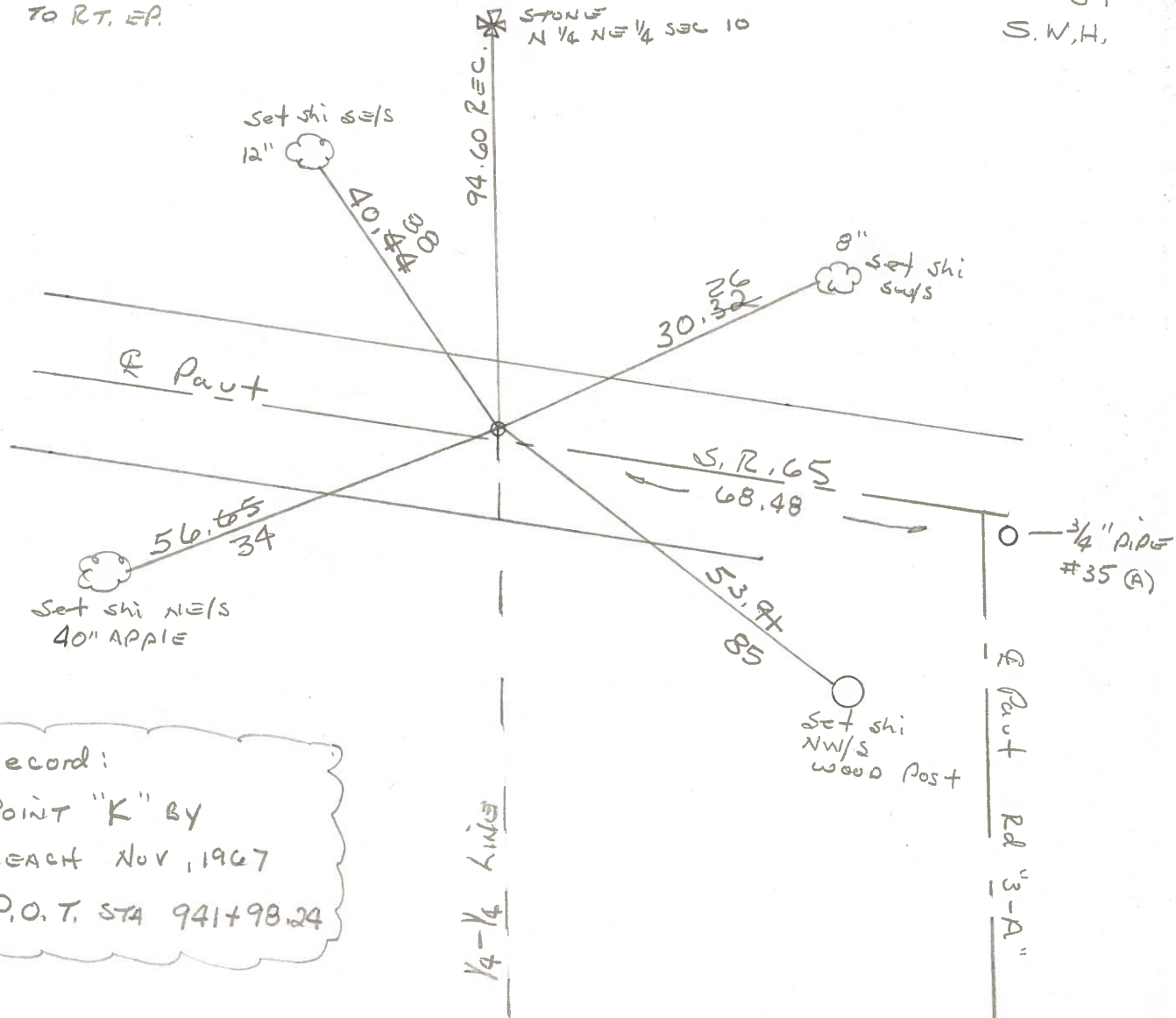
9.8' TO RT. EP.

SLM = 942+42

SET PK/WASHER

9-17-84

S.W.H.



Record:
 Point "K" BY
 BEACH NOV, 1967
 P.O.T. STA 941+98.24

PERSONNEL TITLE PERSONNEL TITLE

Red Beach

COUNTY HENRY

DATE Nov. 1967

W. Knape

S. R. 65

WEATHER

C. Newcomb

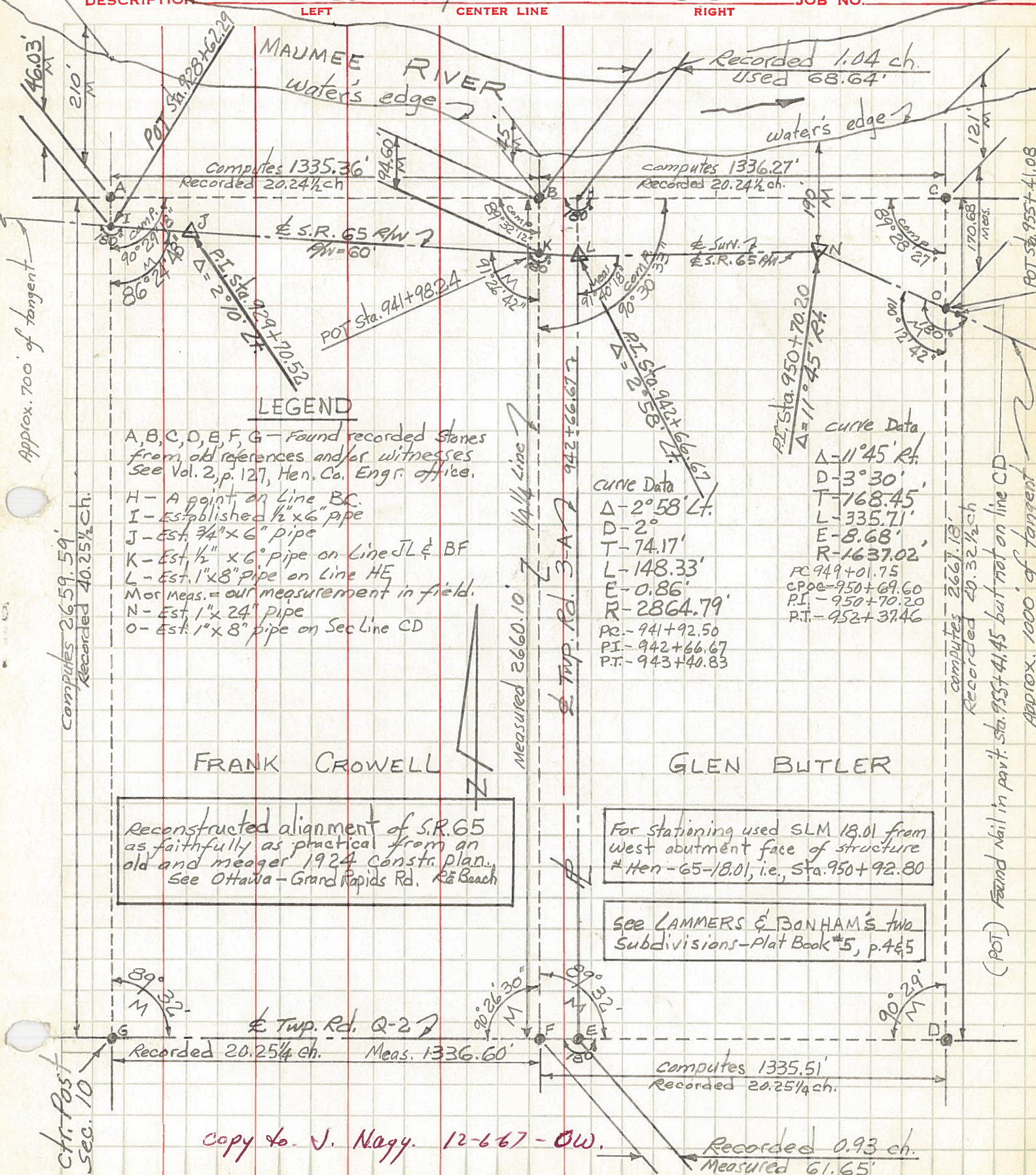
SEC. NE 1/4, Sec. 10

TEMP.

K. Thompson

DESCRIPTION DAMASCUS TWP. T-5-N R-8-E

JOB NO.



Approx. 700' of tangent

Computes 2659.59'
Recorded 40.25 1/4 ch.

Approx. 1000' of tangent

LEGEND

- A, B, C, D, E, F, G - Found recorded stones from old references and/or witnesses See Vol. 2, p. 127, Hen. Co. Engr. office.
- H - A point on Line BC.
- I - Established 1/2" x 6" pipe
- J - Est. 3/4" x 6" pipe
- K - Est. 1/2" x 6" pipe on Line JL & BF
- L - Est. 1" x 8" pipe on Line HE
- M or Meas. = our measurement in field.
- N - Est. 1" x 24" pipe
- O - Est. 1" x 8" pipe on Sec Line CD

CURVE DATA
 Δ - 2° 58' Lt.
 D - 2'
 T - 74.17'
 L - 148.33'
 E - 0.86'
 R - 2864.79'
 PC - 941 + 92.50
 PI - 942 + 66.67
 PT - 943 + 40.83

CURVE DATA
 Δ - 11° 45' Rt.
 D - 3° 30'
 T - 768.45'
 L - 335.71'
 E - 8.68'
 R - 1637.02'
 PC - 949 + 01.75
 CPOC - 950 + 69.60
 PI - 950 + 70.20
 PT - 952 + 37.46

FRANK CROWELL

GLEN BUTLER

Reconstructed alignment of S.R. 65 as faithfully as practical from an old and meager 1924 constr. plan. See Ottawa - Grand Rapids Rd. R^a Beach

For Stationing used SLM 18.01 from west abutment face of structure # Hen - 65 - 18.01, i.e., Sta. 950 + 92.80

See LAMMERS & BONHAM'S two Subdivisions - Plat Book #5, p. 465

(POT) Found Nail in privt. sta. 955 + 41.45 but not on line CD

chr. Post Sec. 10

copy to J. Nagy. 12-6-67 - OW.

Recorded 0.93 ch. Measured 61.65'