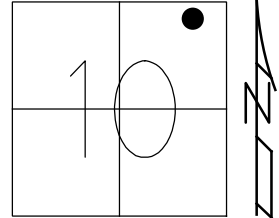


O.D.O.T. DISTRICT 2 SURVEY OFFICE (USE ONLY)

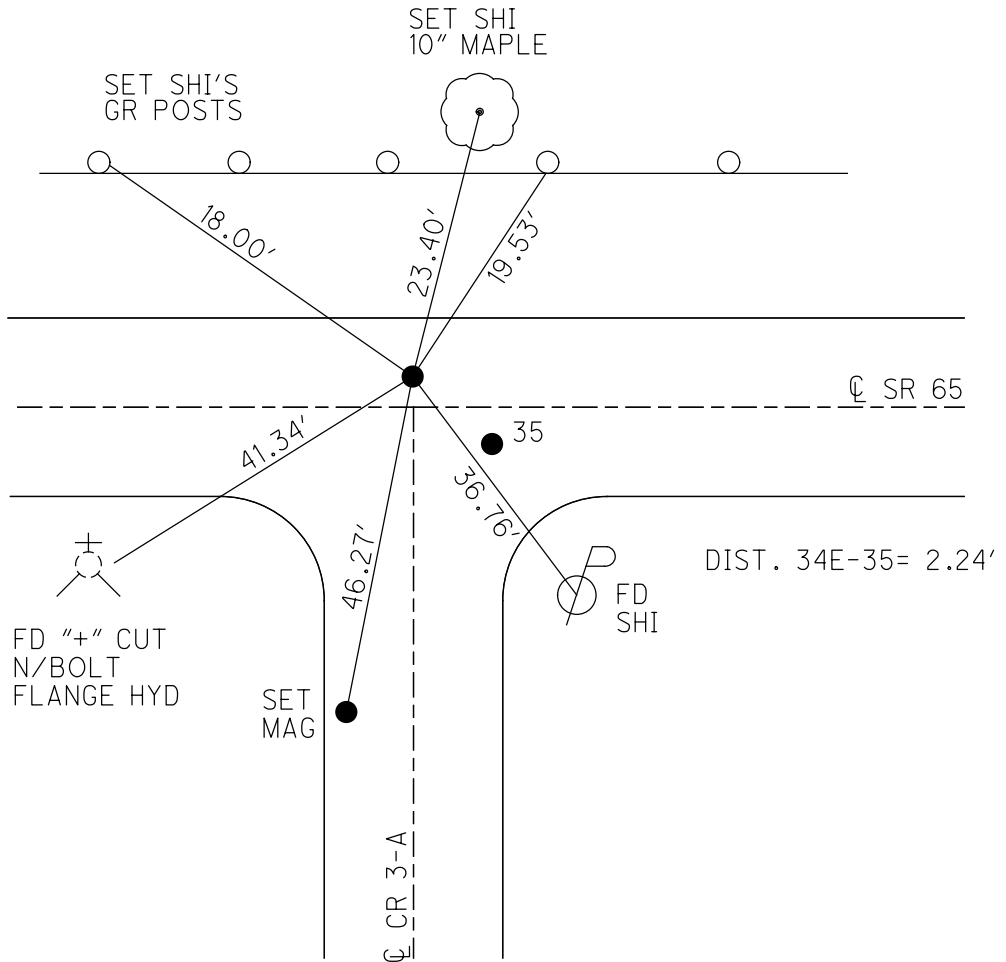
PERSONNEL _____ REFERENCE NO. 34 E SHEET 6 OF 24
 NOTES RHOADES DATE 4-27-17 ROUTE SR 65
 H.C. LEU WEATHER CLOUDY COUNTY HENRY
 R.C. HELDMAN TEMP. 67° TOWNSHIP DAMASCUS
 _____ SECTION 10
 _____ T 5 N R 8 E

TYPE MONUMENT MAG/WASHER
 ON SURFACE - ~~BELOW~~ ON _____
~~LEFT~~ - Q PAV'T - RIGHT 0.8'
9.8' TO LT EDGE PAVEMENT
 S.L.M. 943+06.02

Grid: Northing: 640165.827 Easting: 1577201.814



RECORD: P.T.
 2-2-84
 FD R.R.SPIKE
 1 1/2" DOWN
 LOCATED BY CO.
 11-17-80, R.W.W.
 FD P.K./WASHER
 4/14/03, MB
 SET MAG/WASHER
 5/19/03, MC
 FD MAG/WASHER
 REF35
 2/16/16, DCH
 SET MAGS/WASHER
 NEWREF35
 10/4/17, JLL



O.D.O.T. DISTRICT 2 SURVEY OFFICE

PERSONNEL _____

REFERENCE NO. 35

SHEET 11 OF 26

NOTES BARWHESEL - HC

H.C. _____

DATE 04/14/03

ROUTE 65

R.C. GLASS

WEATHER SUNNY

COUNTY HENRY

RYALL

TEMP. +56°

TOWNSHIP DAMACUS

SECTION _____

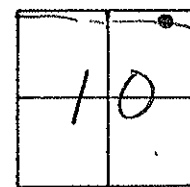
T 5 N R 8 E

TYPE MONUMENT PK'S & WASHERS

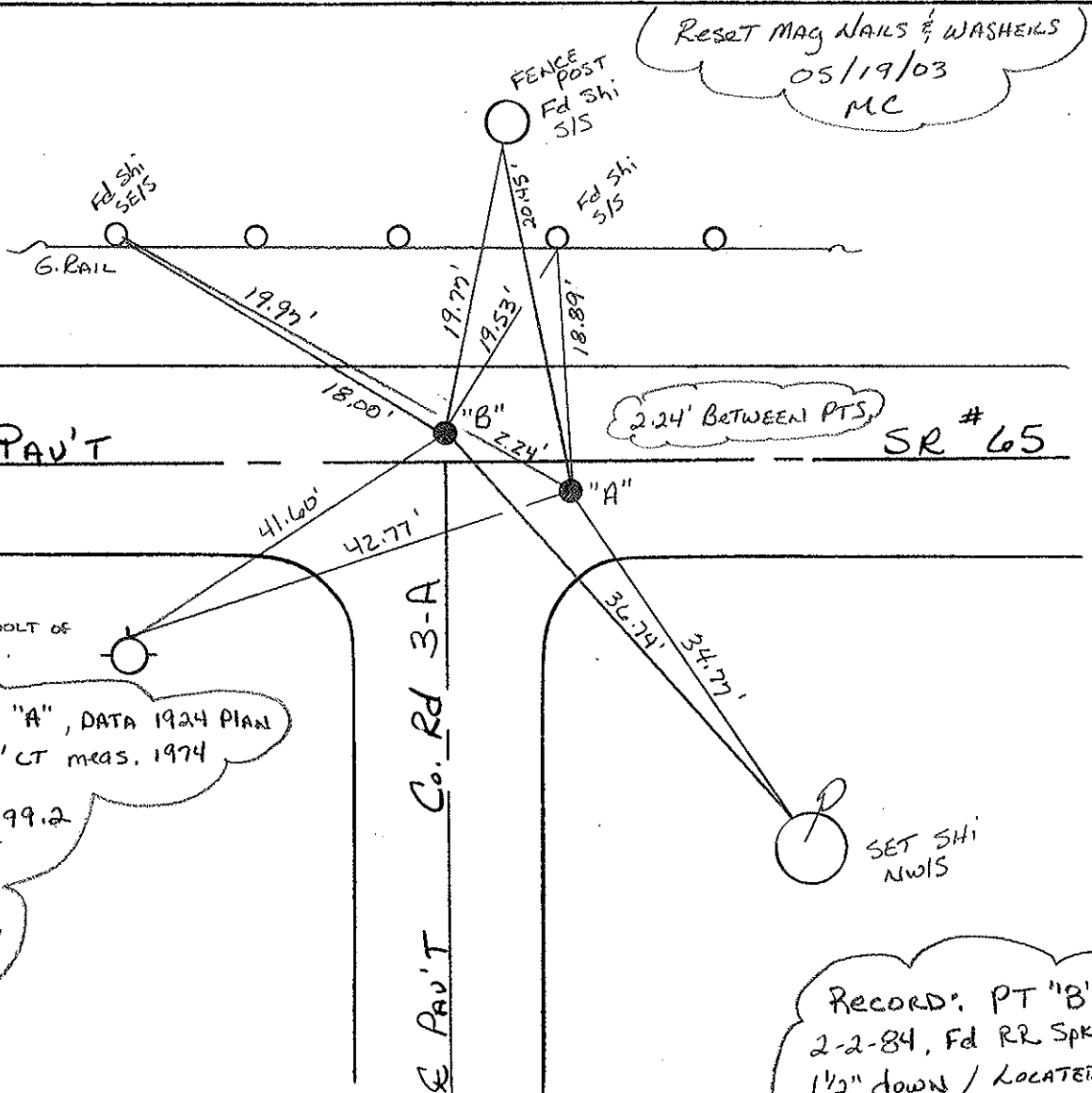
ON SURFACE - BELOW yes 1.5" Down

LEFT - ☉ PAV'T. - RIGHT "A" 0.5' RT & / "B" 0.6' LT &
10.5' TO LT EDGE PAVEMENT ONE of Rd South
9.8'

S.L.M. 942+57 ~ "A"



"A"
"B"



CUT 7" TOP N. BOLT OF TOP FLANGE / Hyd.

Record: PT "A", DATA 1924 PLAN
 PI: Δ = 22° 58' LT meas. 1974
 1924 PLAN
 PI STA: 40+99.2
 Δ = 22° 58' LT
 D = 10° 55'
 T = 77.25'
 R = 2983.39'
 L = 154.47'
 E = 1"

Record: PT "B"
 2-2-84, Fd RR Spk
 1 1/2" down / LOCATED
 by Co. 11-17-80 R.W.W.
 2.22 Between "A" & "B"

O.D.O.T. DISTRICT 2 SURVEY OFFICE

PERSONNEL

REFERENCE NO. A-35

SHEET OF

NOTES BARNHISEL

H.C. BARBOUR

DATE 9-20-91

ROUTE 65

R.C. Geyman

WEATHER CLEAR

COUNTY HENRY

Ripple

TEMP. +56°

TOWNSHIP DAMASCUS

SECTION 10

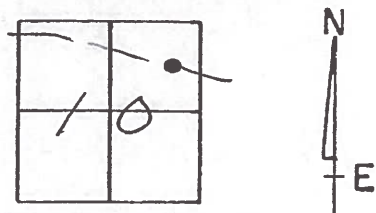
T.5 N R.8 E

TYPE MONUMENT P.K.'s & WASHERS

ON SURFACE - BELOW yes yes

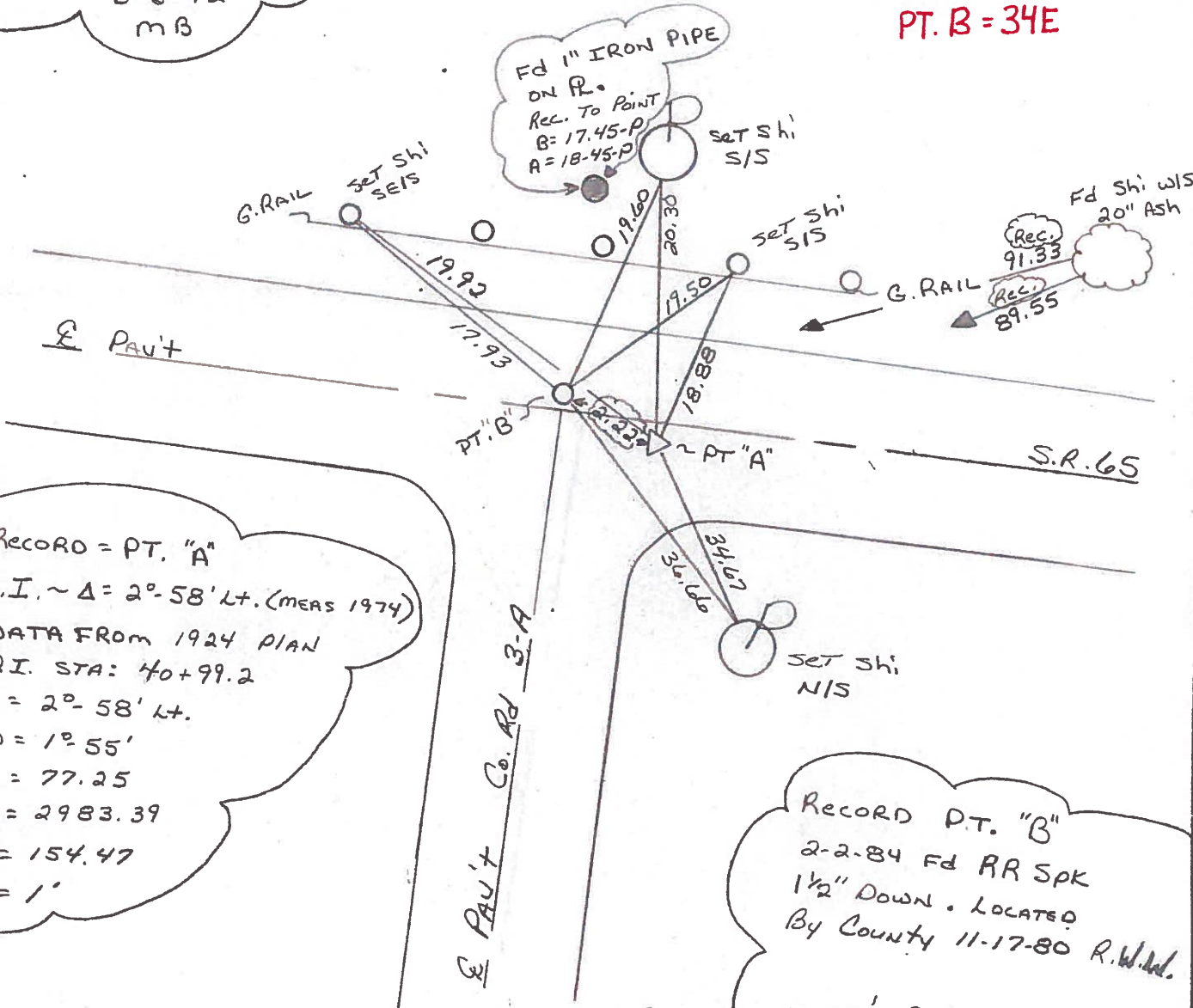
LEFT- & PAV'T. - RIGHT PT. "A" 0.5' RT & / PT. "B" 0.6' LT &
"A" - 9.7 "B" - 8.8 TO LT EDGE PAVEMENT ON E Co. Rd 3-A

S.L.M. P.T. "A" 943+68



Set P.K.'s & Washers
3-5-92
m B

PT. A = 35
PT. B = 34E



RECORD = PT. "A"
 P.I. ~ Δ = 2°-58' Lt. (MEAS 1974)
 DATA FROM 1924 PLAN
 A.I. STA: 40+99.2
 Δ = 2°-58' Lt.
 D = 1°-55'
 T = 77.25
 R = 2983.39
 L = 154.47
 E = 1'

RECORD P.T. "B"
 2-2-84 Fd RR SPK
 1 1/2" DOWN. LOCATED
 BY COUNTY 11-17-80 R.W. Ad.
 2.22' BETWEEN A & B

County HENRY S.R. 65

Date 2-2-84

Township DAMASCUS

Weather CLEAR

Section 10

Temp. 35°

T5N, R8E

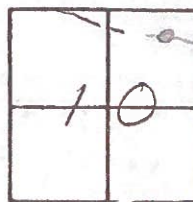
Personnel HOFFMAN

LOEHRLE H.C.

HOUSEHOLDER R.C.

BARNHISEL

"A" = #35



"A" = 3/4" IRON PIPE 3 1/2" Below Surface
 0.5' RT of Pavt SR 65
 9.7' TO LT EP.
 2.1' EAST of & Pavt Rd 3-A

PT. A = 35

SLM 943 +10

PT. B = 34E

SET PR/WASHER

@ BOTH POINTS

9-17-84

S.W.H.

P.I. Δ = 2°-58' LT (MEAS 1974)

DATA FROM 1924 PLAN

P.I. STA. 40+99.2

Δ = 2°-58' LT

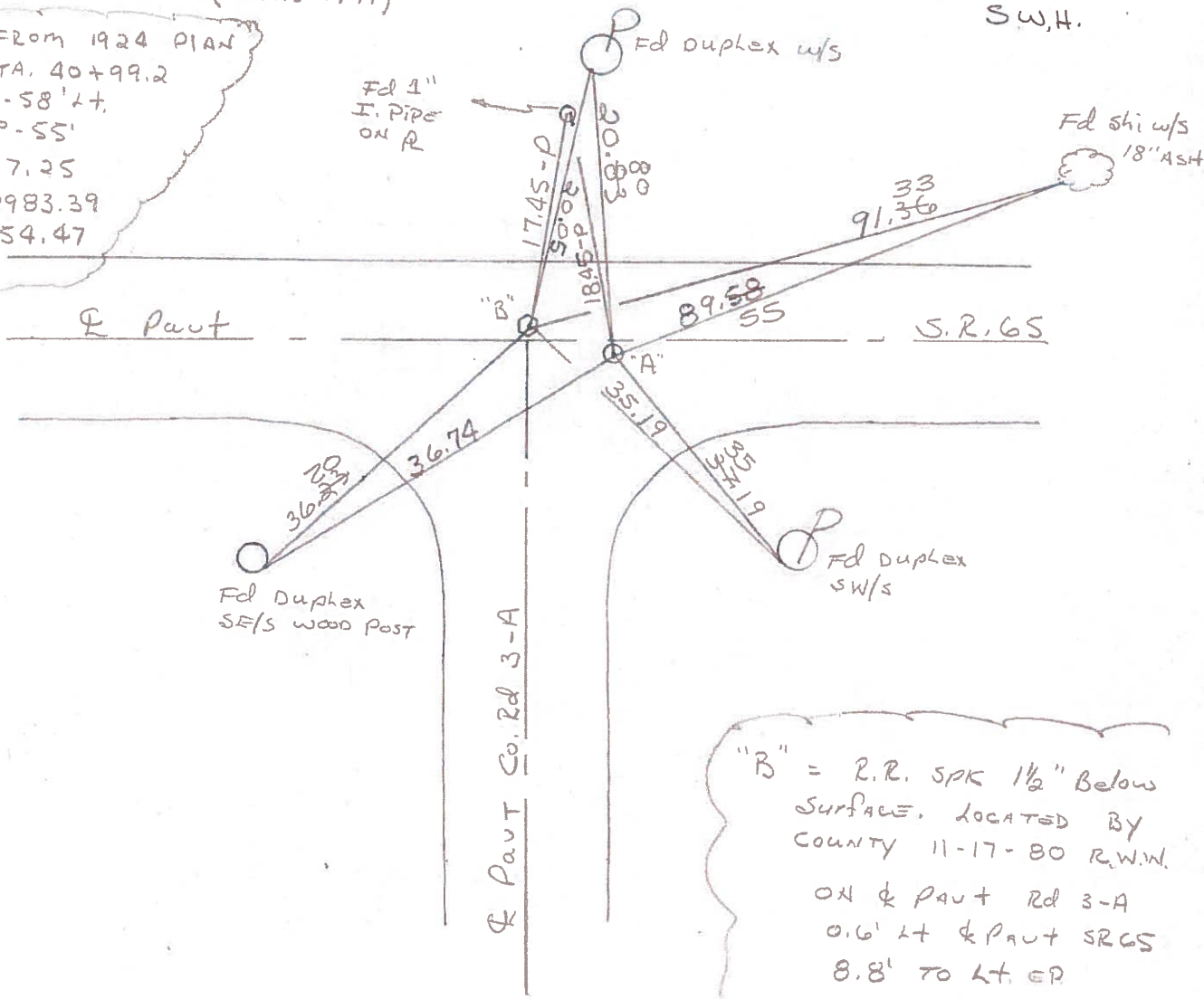
D = 1°-55'

T = 77.25

R = 2983.39

L = 154.47

E = 1'



"B" = R.R. SPK 1 1/2" Below SURFACE. LOCATED BY COUNTY 11-17-80 R.W.W. ON & Pavt Rd 3-A 0.6' LT & Pavt SR 65 8.8' TO LT EP 2.24' BTW "A" & "B"

PERSONNEL TITLE PERSONNEL TITLE

Red Beach

COUNTY HENRY

DATE Nov. 1967

W. Knape

S. R. 65

WEATHER

C. Newcomb

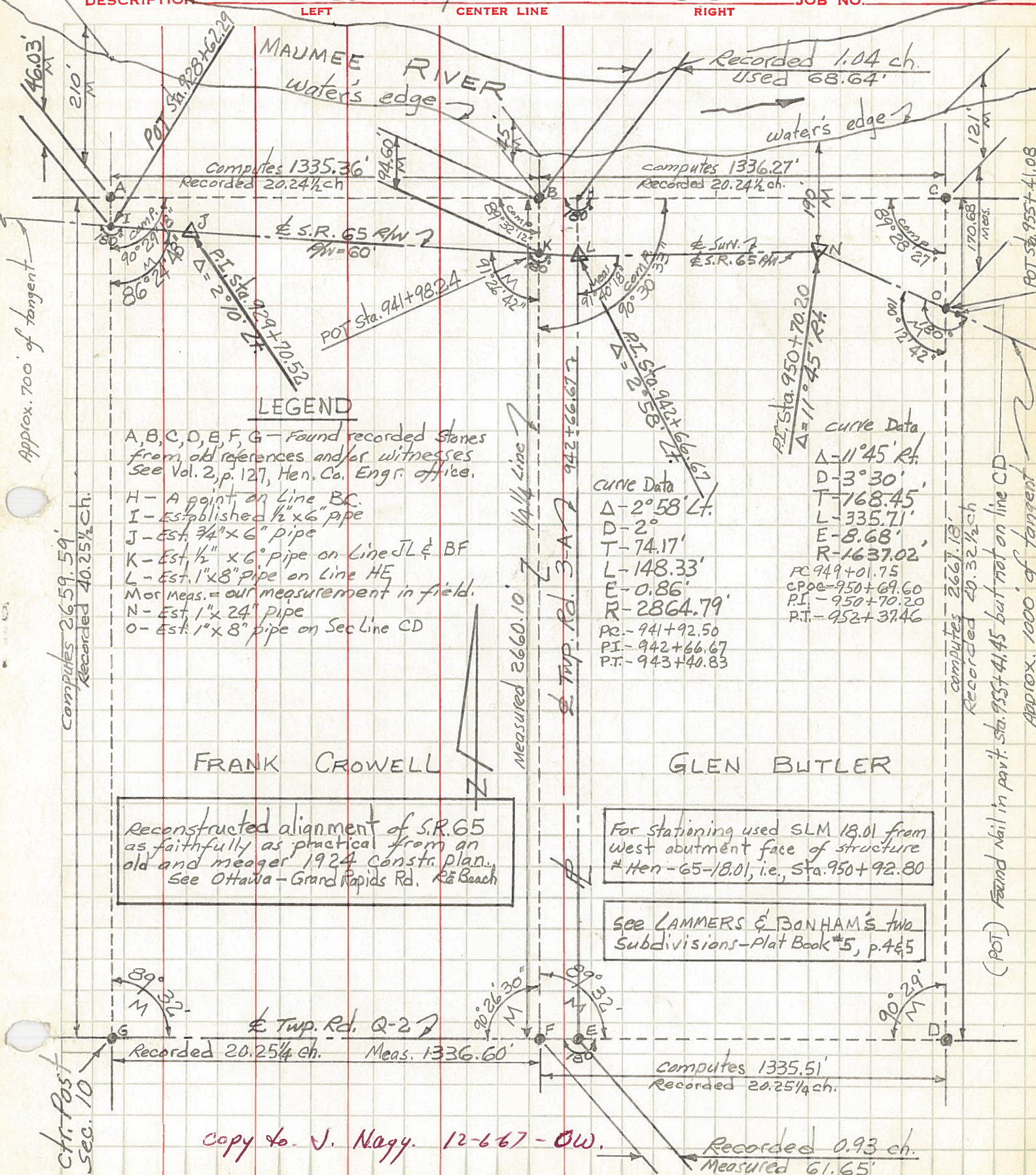
SEC. NE 1/4, Sec. 10

TEMP.

K. Thompson

DESCRIPTION DAMASCUS TWP. T-5-N R-8-E

JOB NO.



Approx. 700' of tangent

Computes 2659.59'
Recorded 40.25 1/4 ch.

- LEGEND**
- A, B, C, D, E, F, G - Found recorded stones from old references and/or witnesses See Vol. 2, p. 127, Hen. Co. Engr. office.
 - H - A point on Line BC.
 - I - Established 1/2" x 6" pipe
 - J - Est. 3/4" x 6" pipe
 - K - Est. 1/2" x 6" pipe on Line JL & BF
 - L - Est. 1" x 8" pipe on Line HE
 - M or Meas. = our measurement in field.
 - N - Est. 1" x 24" pipe
 - O - Est. 1" x 8" pipe on Sec Line CD

Curve Data

Δ - 2° 58' Lt.
 D - 2'
 T - 74.17'
 L - 148.33'
 E - 0.86'
 R - 2864.79'
 PC - 941 + 92.50
 PI - 942 + 66.67
 PT - 943 + 40.83

Curve Data

Δ - 11° 45' Rt.
 D - 3° 30'
 T - 768.45'
 L - 335.71'
 E - 8.68'
 R - 1637.02'
 PC - 949 + 01.75
 CPOC - 950 + 69.60
 PI - 950 + 70.20
 PT - 952 + 37.46

Reconstructed alignment of S.R. 65 as faithfully as practical from an old and meager 1924 constr. plan. See Ottawa - Grand Rapids Rd. R^a Beach

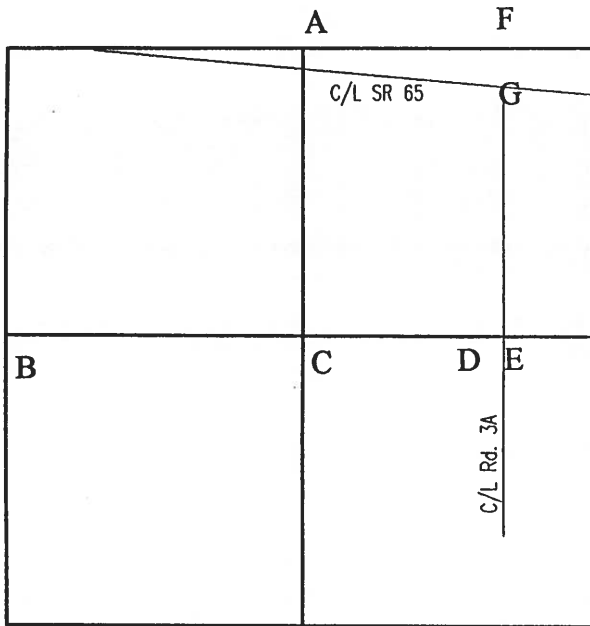
For Stationing used SLM 18.01 from west abutment face of structure # Hen - 65 - 18.01, i.e., Sta. 950 + 92.80

See LAMMERS & BONHAM'S two Subdivisions - Plat Book #5, p. 465

(POT) Found Nail in privt. sta. 955 + 41.45 but not on line CD
 Approx. 1000' of tangent

copy to J. Naggy. 12-6-67 - OW.

Recorded 0.93 ch.
Measured 61.65'



COUNTY: HENRY

TOWNSHIP: DAMASCUS

T- 5 -N

R- 8 -E

SECTION:

10

8/6/80 R.W, J.J, C.S.

A - Found stone (4" x 9" x 20") on slope of embankment. Placed 3/4" iron pin on N/S stone to mark stone.

- 11.65' W. to duplex N/S twin 15" Ash
- 23.24' N. to duplex E/S 12" Locust
- 20.10' S.S.W. to P.K. nail N/S 12" Hickory
- 46' +/- N. of centerline St. Rt. 65

9/25/92 R.W, S.K.

Found ODOT survey marker by stone.

- 11.59' W. to duplex north side twin 18" ash.
- 23.08' N. to duplex east side 12" locust (5.5' above ground).
- 19.80' S.S.W. to duplex north side 12" hickory (in root).

R.W.,C.S.

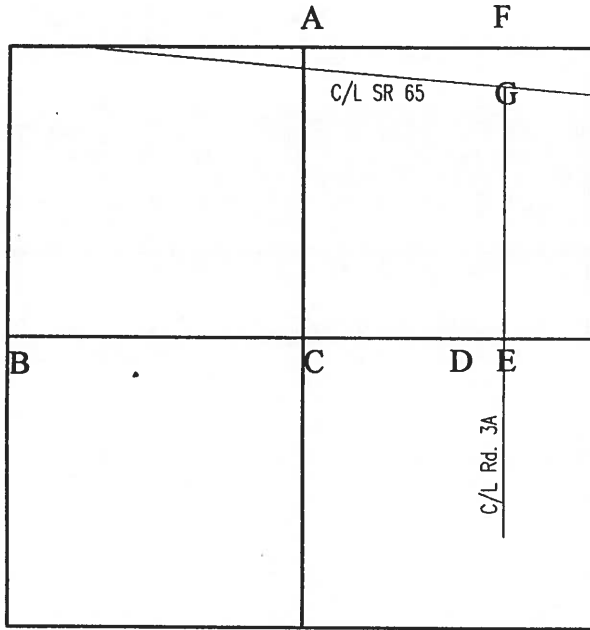
B - Found 3/4" iron pipe from state highway references.
(Burnside 5/4/76)

- 28.90' W. to N & S in power pole
- 58.57' S.E. to "+" top north end W. wall C.B. (plumbed)
- 55.90' S.W. to "+" top north end E. wall C.B. (plumbed)

9/28/93 R.W, S.K.

Found RR spike on surface.

- 28.47' W. to nail shiner east side of power pole.
- 58.46' S.E. to sawed "+" in north east corner of catch basin. (P)
- 55.93' S.W. to sawed "+" in north east corner of catch basin. (P)



COUNTY: HENRY

TOWNSHIP: DAMASCUS

T- 5 -N

R- 8 -E

SECTION:

10

7/30/80

R.W., C.S.

C - Found baby R.R. spike over top center of stone (6" x 8" x 17") 7" below grade. Removed R.R. spike. Place 5/8" iron pin on N/S stone. Top of pin is over top center of stone. Stone is 2.8' north of south edge 13' dirt road.

- 24.15' S.E. to 1/2" iron pin on south ditch bank
- 26.42' S.S.W. to 1" iron pipe on south ditch bank
- 44.42' S.W. to 1" iron pipe on S.W. ditch bank

9/28/93

R.W, S.K.

Found iron pin. Did not check previous ties.
18.32' N. to 30d spike s/s 8' tree.

7/29/80

R.W., C.S.

D- Found recorded iron pin 0.12' north of high point of stone (6" x 12" x 13"). Lowered stone to 12" below grade. Placed 5/8" iron pin on N/S/ stone. Top of iron pin is over high point of stone. Stone is 5.4' south of north edge 10' pavement.

- 46.27' E.N.E. to "+" east end stone headwall
- 81.54' E. to spike N/S 48" Oak
- 35.73' S.W. to 1/2" iron pin on south ditch bank
- 61.68' E. to R.R. spike centerline Rd. 3-A

9/28/92

R.W, S.K.

Ties to stone headwall are no longer good.
81.51' E. to spike north side 48" oak.
45.80' E.S.E. to sawed "+" in top of stone deck.
13.78' S.W. to 5/8" iron pin on north ditch bank.