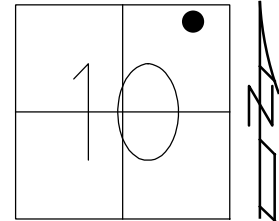


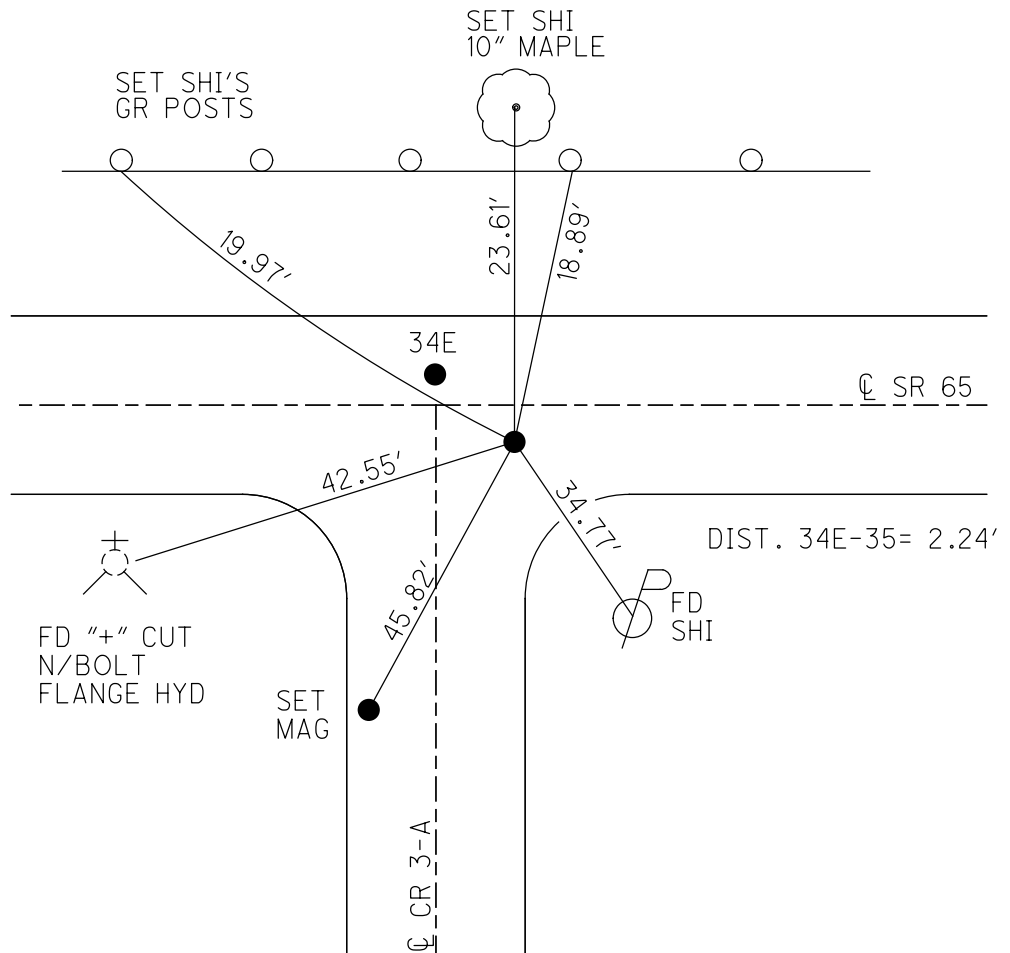
O.D.O.T. DISTRICT 2 SURVEY OFFICE (USE ONLY)

PERSONNEL _____ REFERENCE NO. 35 SHEET 7 OF 24
 NOTES RHOADES DATE 4-27-17 ROUTE SR 65
 H.C. LEU WEATHER CLOUDY COUNTY HENRY
 R.C. HELDMAN TEMP. 67° TOWNSHIP DAMASCUS
 SECTION 10
 T 5 N R 8 E

TYPE MONUMENT MAG/WASHER
~~ON SURFACE~~ - BELOW ON
~~LEFT~~ - ☉ PAV'T - RIGHT 1.5'
10.5' TO LT EDGE PAVEMENT
 S.L.M. 943+08.02
 Grid: Northing: 640164.958 Easting: 1577203.965



RECORD: P.I.
 DATA FROM 1924 PLAN
 $\Delta = 2^{\circ}58' \text{ LT}$
 MEAS. 1974
 STA. 40+99.2
 $\Delta = 2^{\circ}58' \text{ LT}$
 $D = 1^{\circ}55'$
 $T = 77.25'$
 $R = 2983.39'$
 $L = 154.47'$
 $E = 1'$
 FD P.K./WASHER
 4/14/03, MB
 SET MAG/WASHER
 5/19/03, MC
 FD MAG/WASHER
 REFA35
 2/16/16, DCH
 SET MAG/WASHER
 NEWREFA35
 10/4/17, JLL



O.D.O.T. DISTRICT 2 SURVEY OFFICE

PERSONNEL _____

REFERENCE NO. 35

SHEET 11 OF 26

NOTES BARWHESEL - HC

H.C. _____

DATE 04/14/03

ROUTE 65

R.C. GLASS

WEATHER SUNNY

COUNTY HENRY

RYALL

TEMP. +56°

TOWNSHIP DAMACUS

SECTION _____

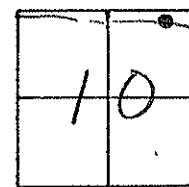
T 5 N R 8 E

TYPE MONUMENT PK'S & WASHERS

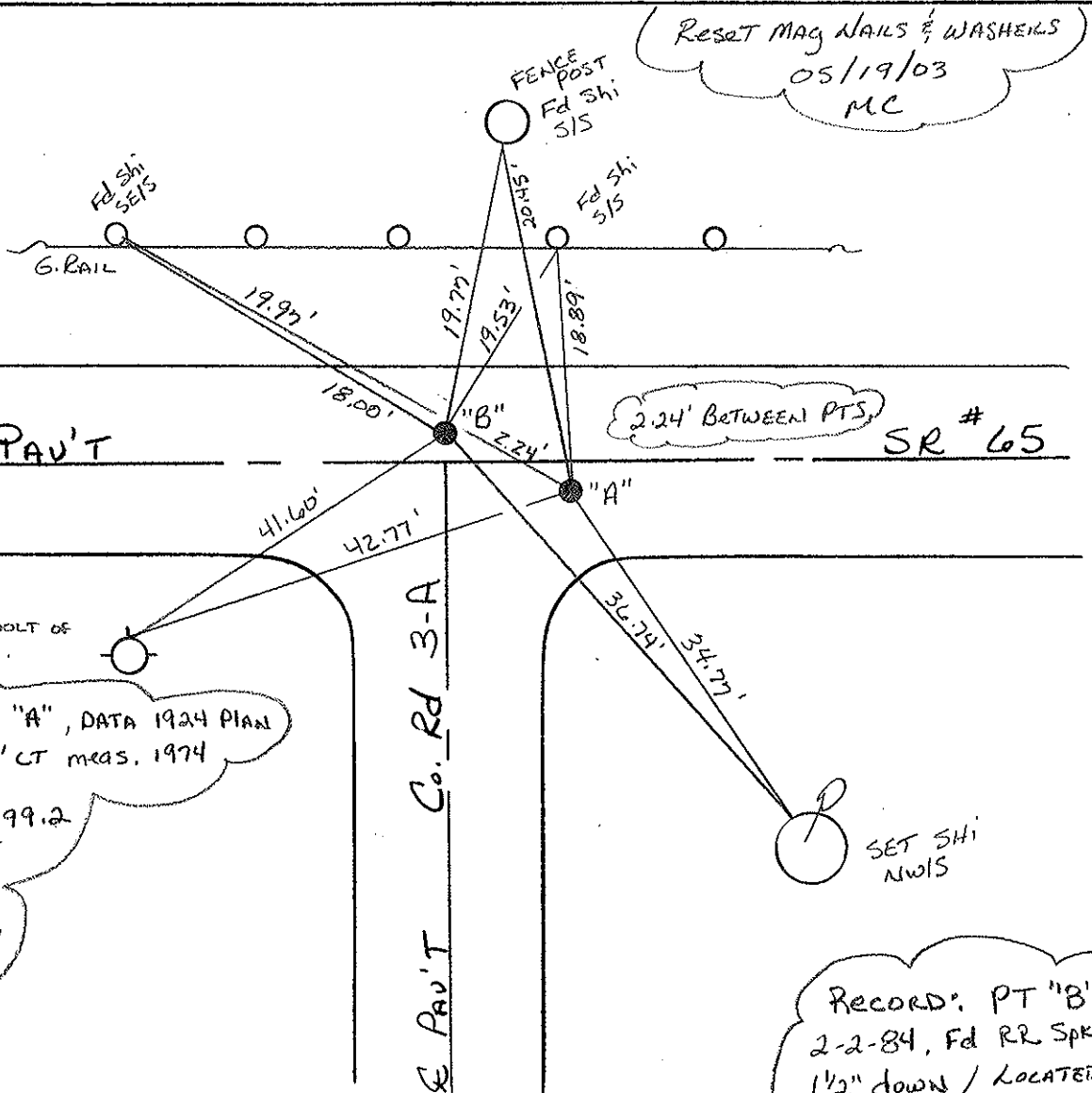
ON SURFACE - BELOW yes 1.5" Down

LEFT - ☉ PAV'T. - RIGHT "A" 0.5' RT & / "B" 0.6' LT &
10.5' TO LT EDGE PAVEMENT ONE of Rd South
9.8'

S.L.M. 942+57 ~ "A"



"A"
"B"



RESET MAG NAILS & WASHERS
05/19/03
MC

2.24' BETWEEN PTS.
SR # 65

Cut 7" TOP N. BOLT OF
TOP FLANGE / Hyd.

Record: PT "A", DATA 1924 PLAN
 PI: Δ = 22° 58' LT meas. 1974
 1924 PLAN
 PI STA: 40+99.2
 Δ = 22° 58' LT
 D = 10° 55'
 T = 77.25'
 R = 2983.39'
 L = 154.47'
 E = 1"

Record: PT "B"
 2-2-84, Fd RR Spk
 1 1/2" down / LOCATED
 by Co. 11-17-80 R.W.W.
 2.22 Between "A" & "B"

O.D.O.T. DISTRICT 2 SURVEY OFFICE

PERSONNEL

REFERENCE NO. A-35

SHEET OF

NOTES BARNHISEL

H.C. BARBOUR

DATE 9-20-91

ROUTE 65

R.C. Geyman

WEATHER CLEAR

COUNTY HENRY

Ripple

TEMP. +56°

TOWNSHIP DAMASCUS

SECTION 10

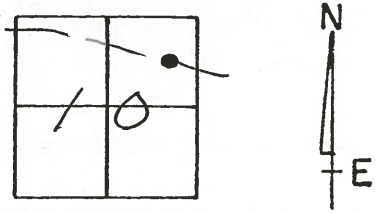
T 5 N R 8 E

TYPE MONUMENT P.K.'s & WASHERS

ON SURFACE - BELOW YES YES

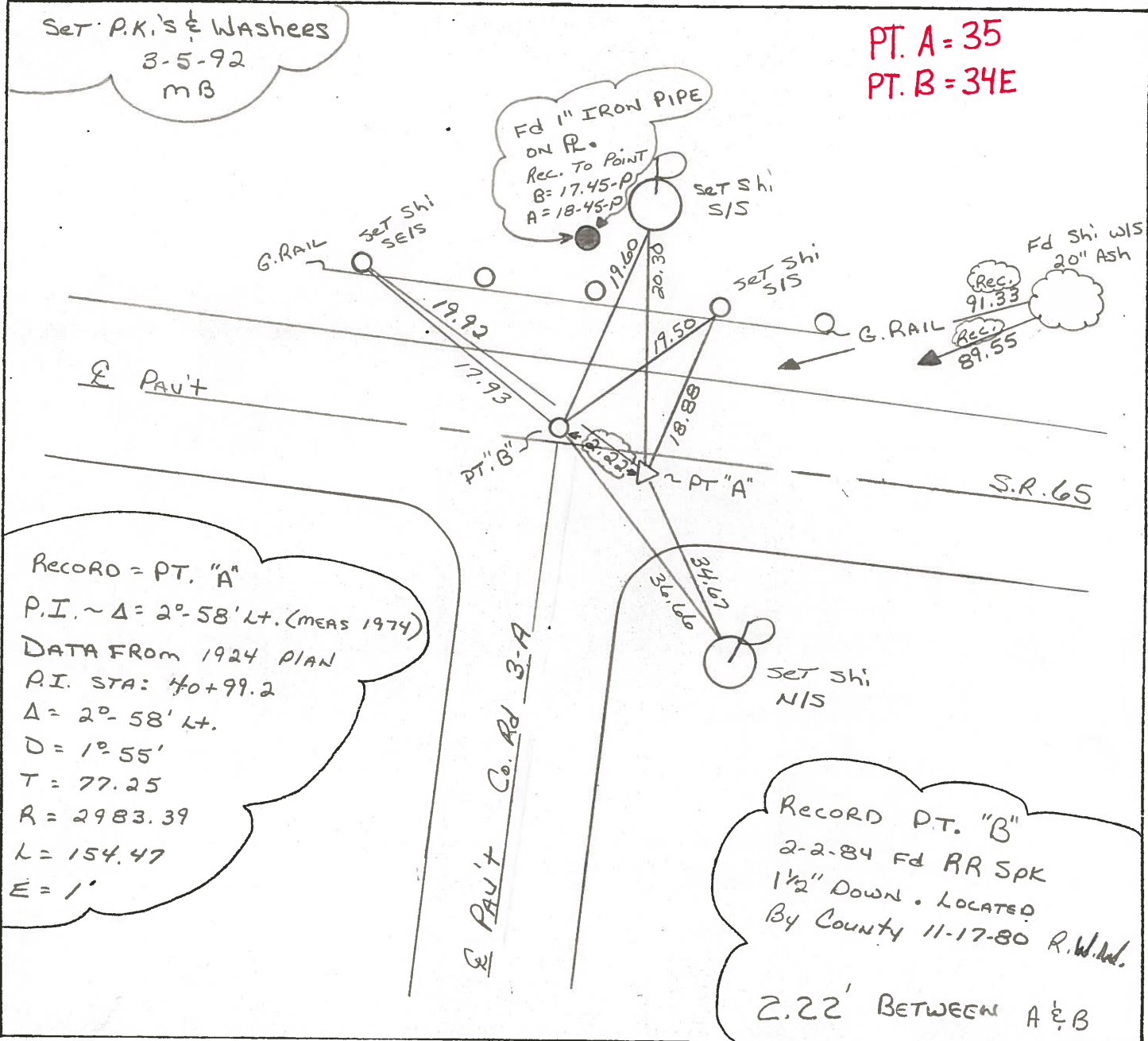
"A" - 9.7
"B" - 8.8 TO LT EDGE PAVEMENT PT. "A" 0.5' RT & / PT. "B" 0.6' LT &
ON E Co. Rd 3-A

S.L.M. P.T. "A" 943+68



Set P.K.'s & Washers
3-5-92
MB

PT. A = 35
PT. B = 34E



Fd 1" IRON PIPE
ON R.
Rec. To Point
B = 17.45-P
A = 18.45-P

Fd Shi w/ls
20" Ash
Rec. 91.33
Rec. 89.55

RECORD = PT. "A"
P.I. ~ Δ = 2°-58' Lt. (MEAS 1974)
DATA FROM 1924 PLAN
P.I. STA: 40+99.2
Δ = 2°-58' Lt.
D = 1°-55'
T = 77.25
R = 2983.39
L = 154.47
E = 1'

RECORD PT. "B"
2-2-84 Fd RR Spk
1 1/2" Down. LOCATED
By County 11-17-80 R.W.D.

2.22' BETWEEN A & B

E PAVT Co. Rd 3-A

County HENRY S.R. 65

Date 2-2-84

Township DAMASCUS

Weather CLEAR

Section 10

Temp. 35°

T5N, R8E

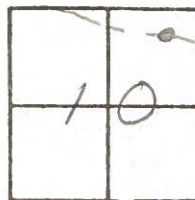
Personnel HOFFMAN

LOEHRE H.C.

HOUSEHOLDER R.C.

BARNHISEL

"A" = #35



"A" = 3/4" IRON PIPE 3 1/2" Below Surface
 0.5' RT of Pavt SR 65
 9.7' TO Lt EP.
 2.1' EAST of & Pavt Rd 3-A
 P.I. Δ = 2°-58' Lt. (meas 1974)

PT.A = 35

SLM 943 + 10

PT.B = 34E

SET PK/WASHER

@ BOTH POINTS

9-17-84

S.W.H.

DATA FROM 1924 PLAN

P.I. STA. 40+99.2

Δ = 2°-58' Lt.

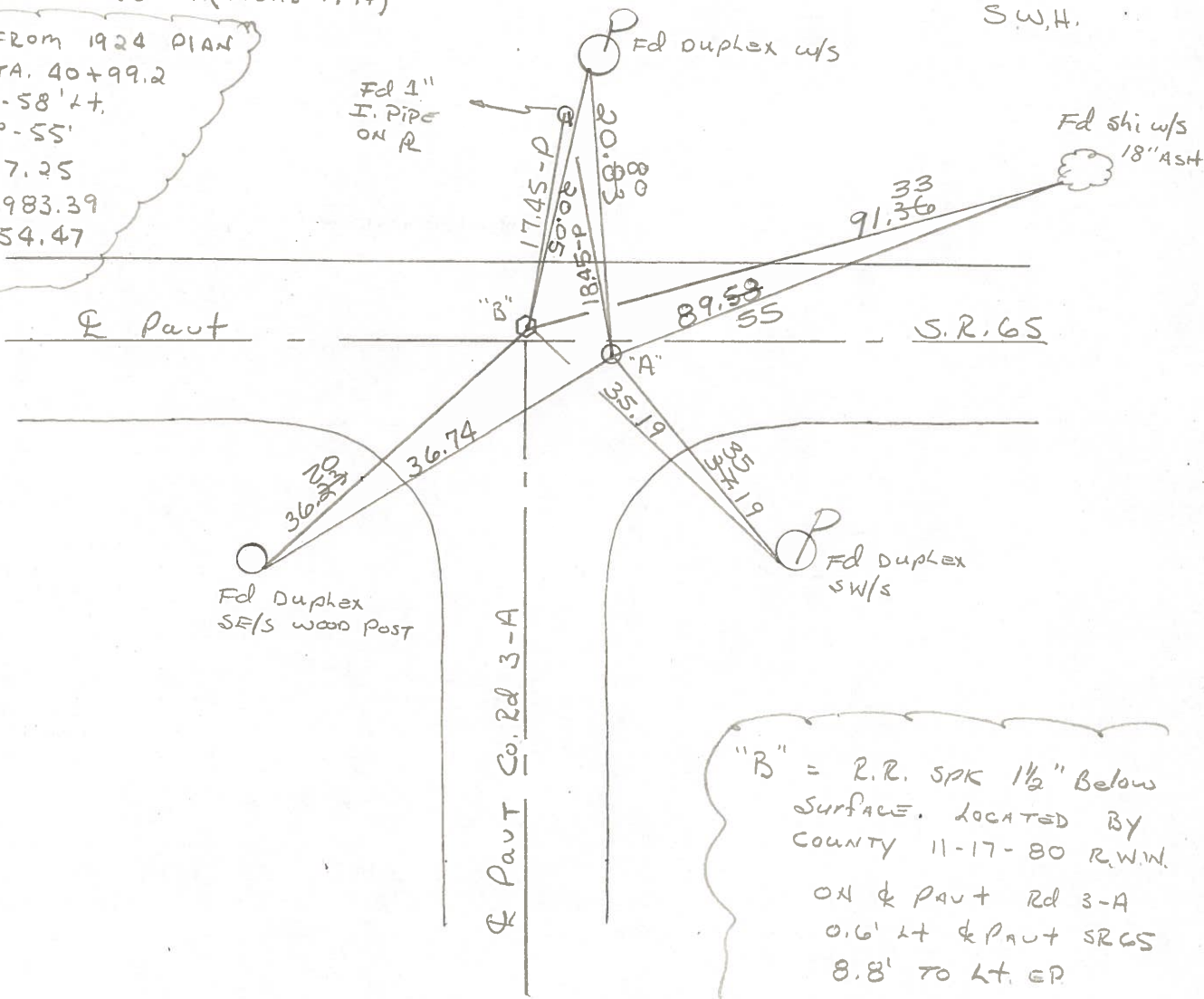
D = 1°-55'

T = 77.25

R = 2983.39

L = 154.47

E = 1'

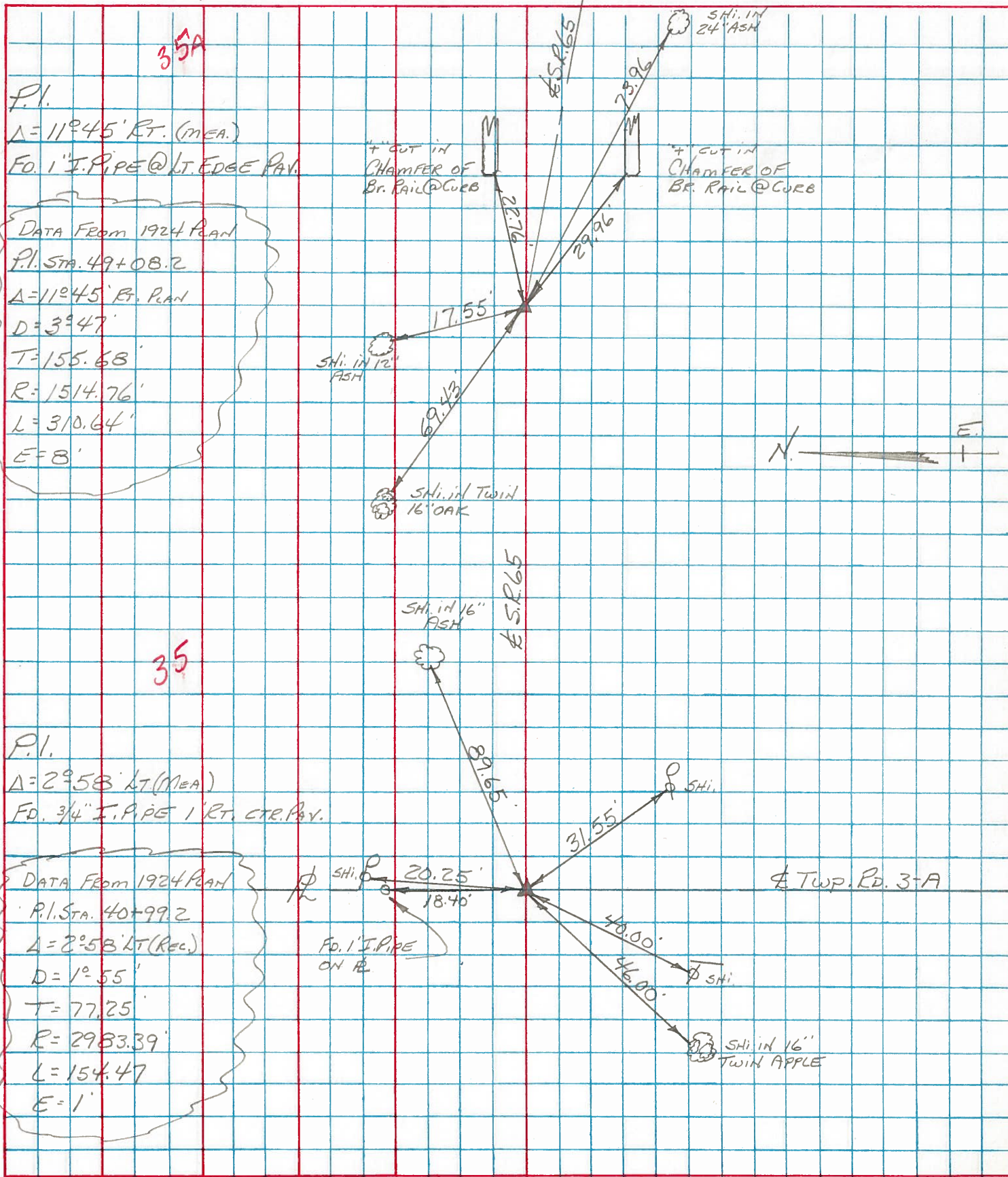


"B" = R.R. SPK 1 1/2" Below Surface. LOCATED BY COUNTY 11-17-80 R.W.W. ON & Pavt Rd 3-A 0.6' Lt & Pavt SR 65 8.8' TO Lt. EP

2.24' BTW "A" & "B"

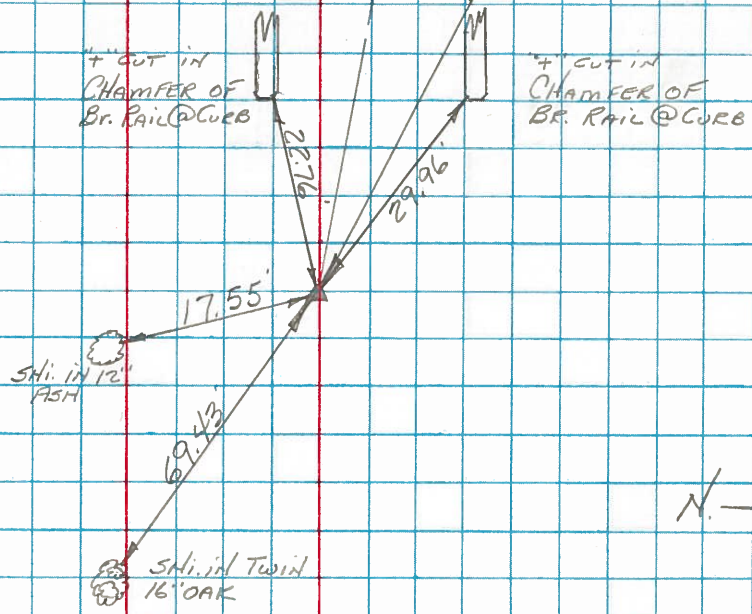
PERSONNEL BURNSIDE TITLE _____ PERSONNEL SMITH TITLE _____ COUNTY HENRY DATE 3-5-74
 PERSONNEL BOWERS TITLE _____ PERSONNEL MEAD TITLE _____ S. R. 65 WEATHER CLEAR
 SEC. _____ TEMP. +47°

DESCRIPTION ± RW CONTROL TIES LEFT CENTER LINE RIGHT JOB NO. _____



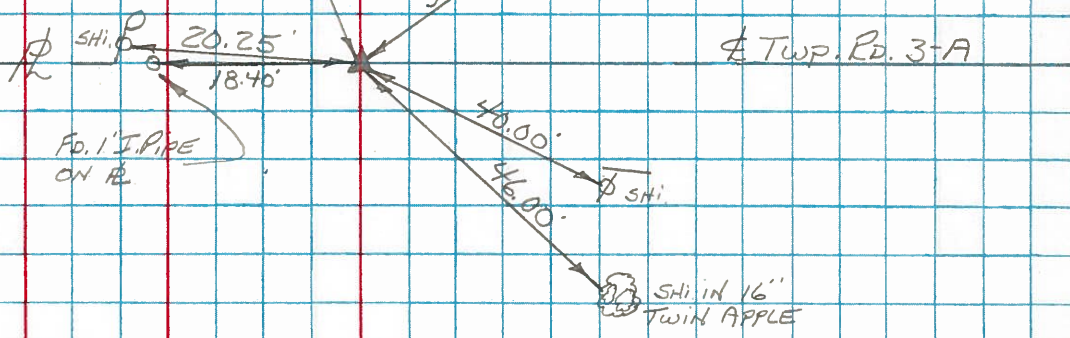
P.I.
 $\Delta = 11^\circ 45' \text{ RT. (MEA.)}$
 Fd. 1" I. PIPE @ LT. EDGE PAV.

DATA FROM 1924 PLAN
 P.I. STA. 49+08.2
 $\Delta = 11^\circ 45' \text{ RT. PLAN}$
 $D = 3^\circ 47'$
 $T = 155.68'$
 $R = 1514.76'$
 $L = 310.64'$
 $E = 8'$

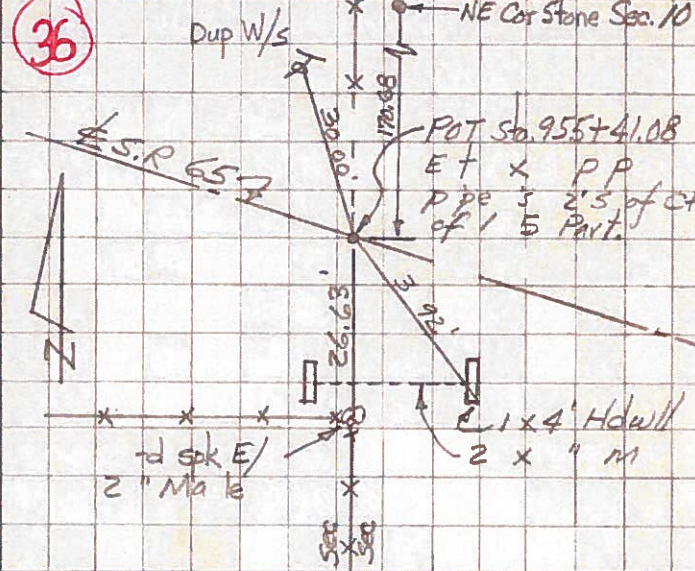
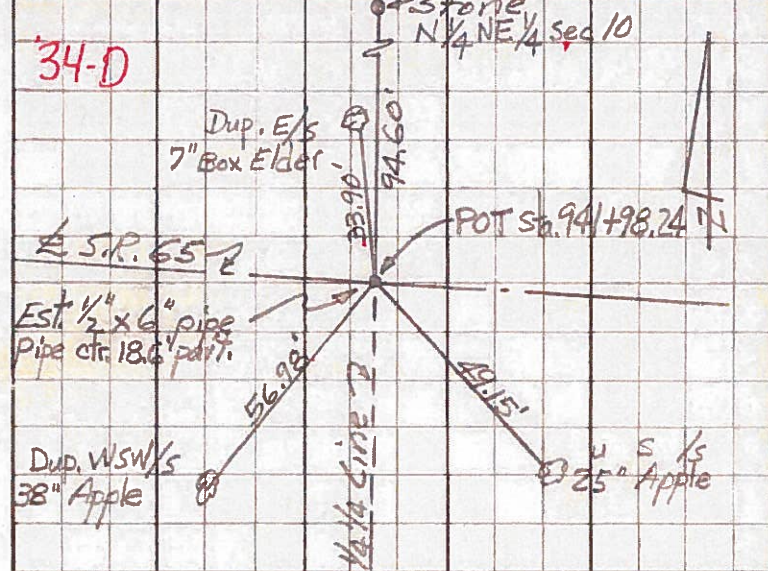
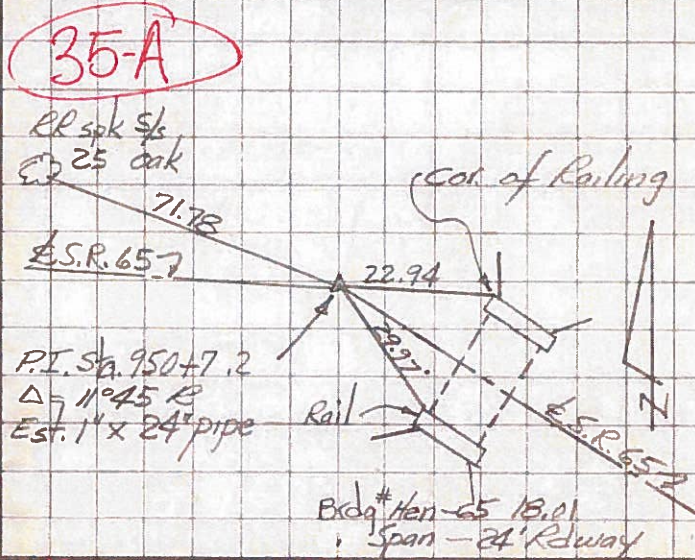
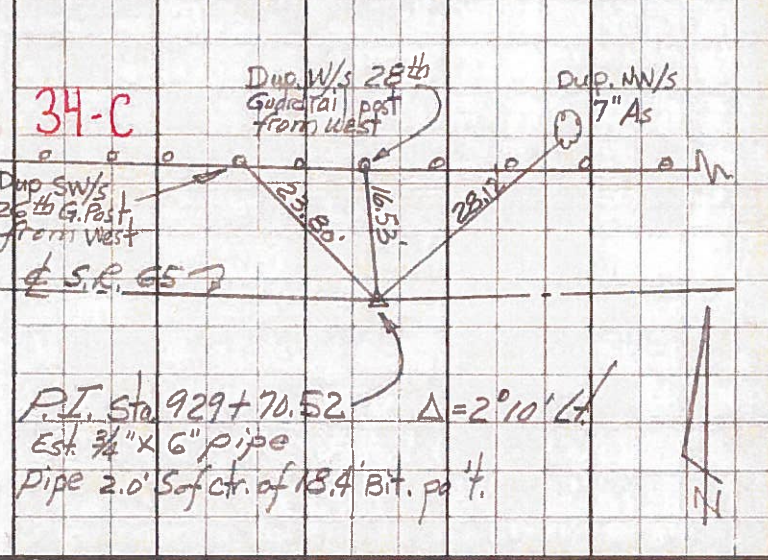
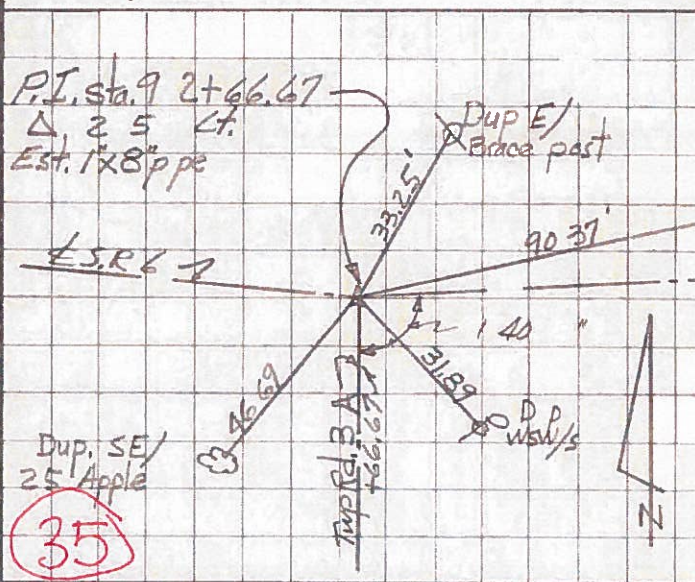
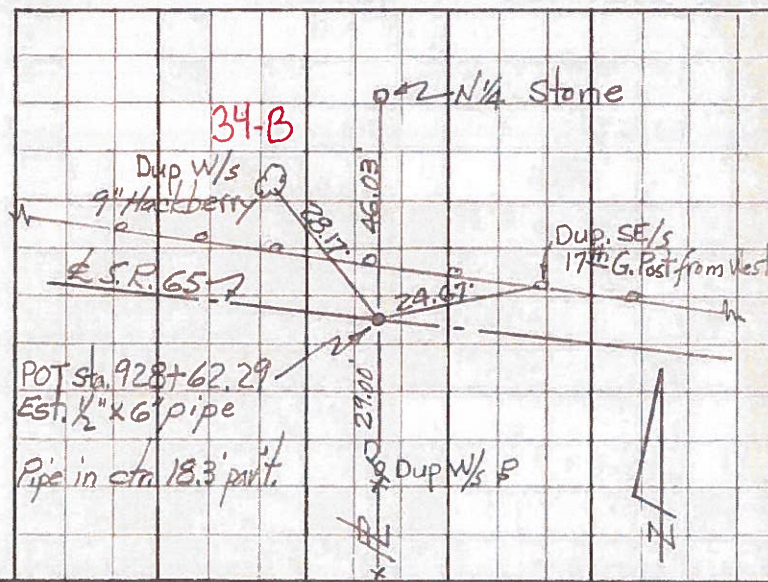


P.I.
 $\Delta = 2^\circ 58' \text{ LT (MEA.)}$
 Fd. 3/4" I. PIPE 1' RT. CTR. PAV.

DATA FROM 1924 PLAN
 P.I. STA. 40+99.2
 $\Delta = 2^\circ 58' \text{ LT (REC.)}$
 $D = 1^\circ 55'$
 $T = 77.25'$
 $R = 2983.39'$
 $L = 154.47'$
 $E = 1'$



PERSONNEL	TITLE	PERSONNEL	TITLE	COUNTY	DATE
Red Beach				Henry	Nov. 1967
Knape				S. R.	65
Newcomb				WEATHER	
Thompson				SEC.	NE 1/4 Sec. 10
DESCRIPTION	CONTROL Points		DAMASCUS TWP.		JOB NO.
	LEFT	CENTER LINE	RIGHT		



PERSONNEL TITLE PERSONNEL TITLE

Red Beach

COUNTY HENRY

DATE Nov. 1967

W. Knape

S. R. 65

WEATHER

C. Newcomb

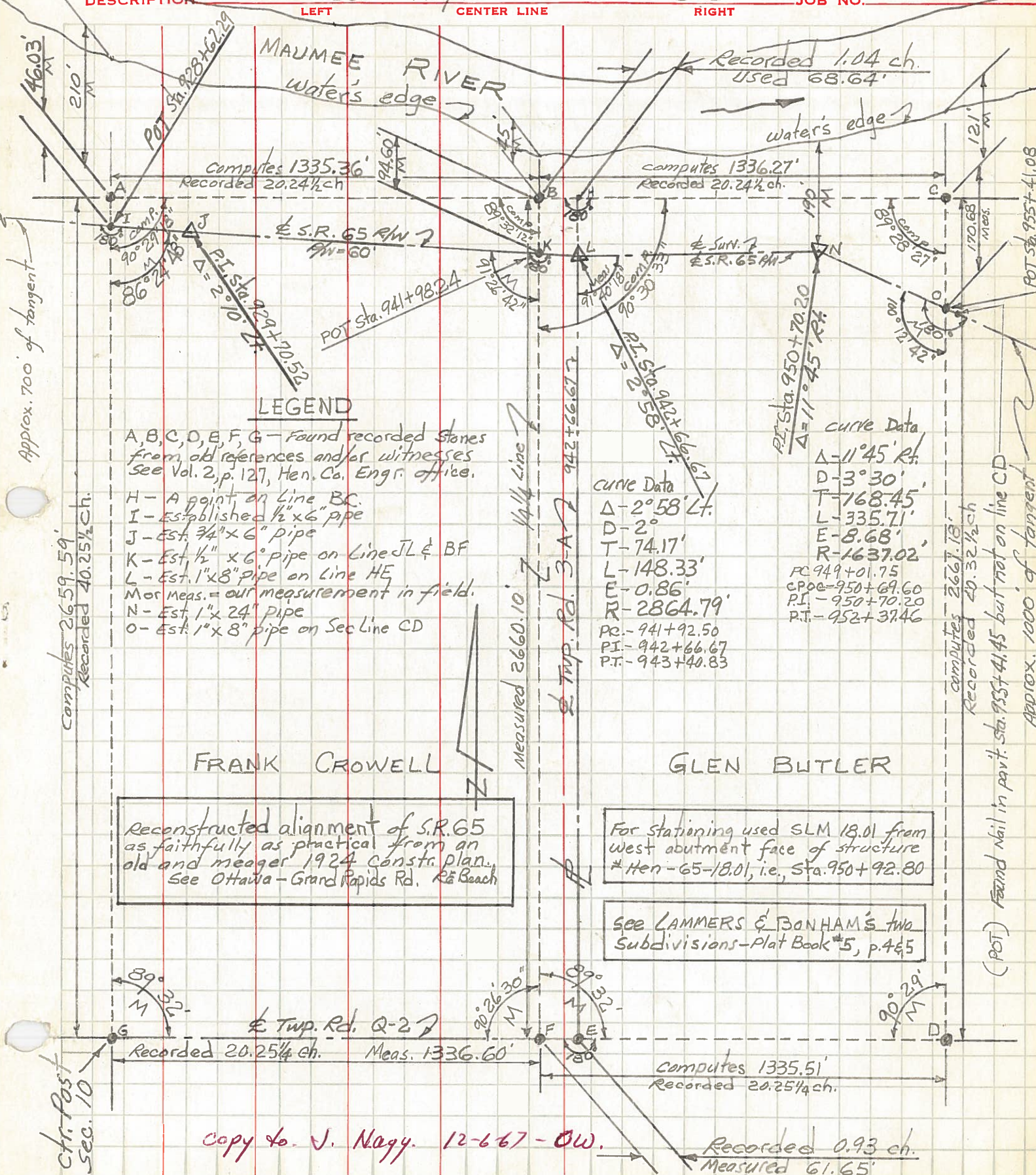
SEC. NE 1/4, Sec. 10

TEMP.

K. Thompson

DESCRIPTION DAMASCUS TWP. T-5-N R-8-E

JOB NO.



LEGEND

- A, B, C, D, E, F, G - Found recorded stones from old references and/or witnesses See Vol. 2, p. 127, Hen. Co. Engr. office.
- H - A point on Line BC.
- I - Established 1/2" x 6" pipe
- J - Est. 3/4" x 6" pipe
- K - Est. 1/2" x 6" pipe on Line JL & BF
- L - Est. 1" x 8" pipe on Line HE
- M or Meas. = our measurement in field.
- N - Est. 1" x 24" pipe
- O - Est. 1" x 8" pipe on Sec Line CD

Reconstructed alignment of S.R. 65 as faithfully as practical from an old and meager 1924 constr. plan. See Ottawa - Grand Rapids Rd. R² Beach

For Stationing used SLM 18.01 from west abutment face of structure # Hen - 65 - 18.01, i.e., Sta. 950 + 92.80

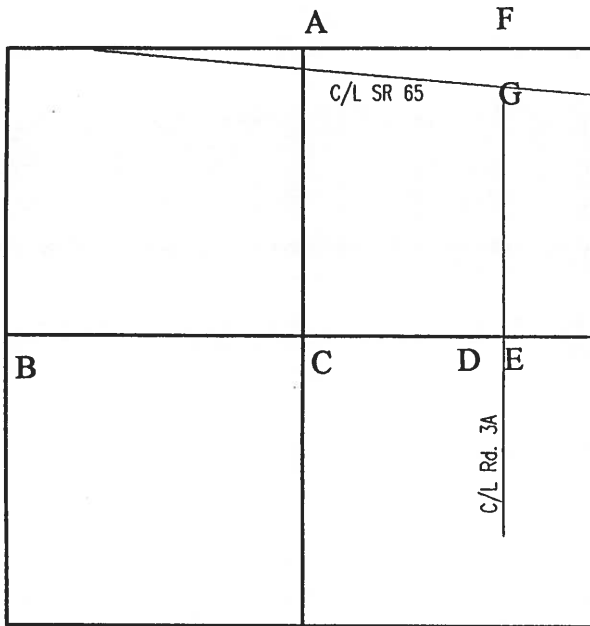
See LAMMERS & BONHAM'S two Subdivisions - Plat Book #5, p. 465

FRANK CROWELL

GLEN BUTLER

copy to J. Naggy. 12-6-67 - OW.

Recorded 0.93 ch. Measured 61.65'



COUNTY: HENRY

TOWNSHIP: DAMASCUS

T- 5 -N R- 8 -E

SECTION: 10

8/6/80 R.W, J.J, C.S.

A - Found stone (4" x 9" x 20") on slope of embankment. Placed 3/4" iron pin on N/S stone to mark stone.

- 11.65' W. to duplex N/S twin 15" Ash
- 23.24' N. to duplex E/S 12" Locust
- 20.10' S.S.W. to P.K. nail N/S 12" Hickory
- 46' +/- N. of centerline St. Rt. 65

9/25/92 R.W, S.K.

Found ODOT survey marker by stone.

- 11.59' W. to duplex north side twin 18" ash.
- 23.08' N. to duplex east side 12" locust (5.5' above ground).
- 19.80' S.S.W. to duplex north side 12" hickory (in root).

R.W.,C.S.

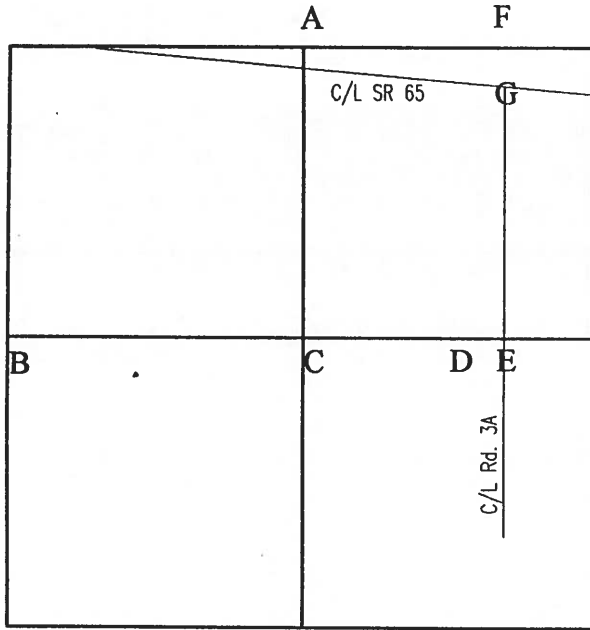
B - Found 3/4" iron pipe from state highway references.
(Burnside 5/4/76)

- 28.90' W. to N & S in power pole
- 58.57' S.E. to "+" top north end W. wall C.B. (plumbed)
- 55.90' S.W. to "+" top north end E. wall C.B. (plumbed)

9/28/93 R.W, S.K.

Found RR spike on surface.

- 28.47' W. to nail shiner east side of power pole.
- 58.46' S.E. to sawed "+" in north east corner of catch basin. (P)
- 55.93' S.W. to sawed "+" in north east corner of catch basin. (P)



COUNTY: HENRY

TOWNSHIP: DAMASCUS

T- 5 -N

R- 8 -E

SECTION:

10

7/30/80

R.W., C.S.

C - Found baby R.R. spike over top center of stone (6" x 8" x 17") 7" below grade. Removed R.R. spike. Place 5/8" iron pin on N/S stone. Top of pin is over top center of stone. Stone is 2.8' north of south edge 13' dirt road.

- 24.15' S.E. to 1/2" iron pin on south ditch bank
- 26.42' S.S.W. to 1" iron pipe on south ditch bank
- 44.42' S.W. to 1" iron pipe on S.W. ditch bank

9/28/93

R.W, S.K.

Found iron pin. Did not check previous ties.
18.32' N. to 30d spike s/s 8' tree.

7/29/80

R.W., C.S.

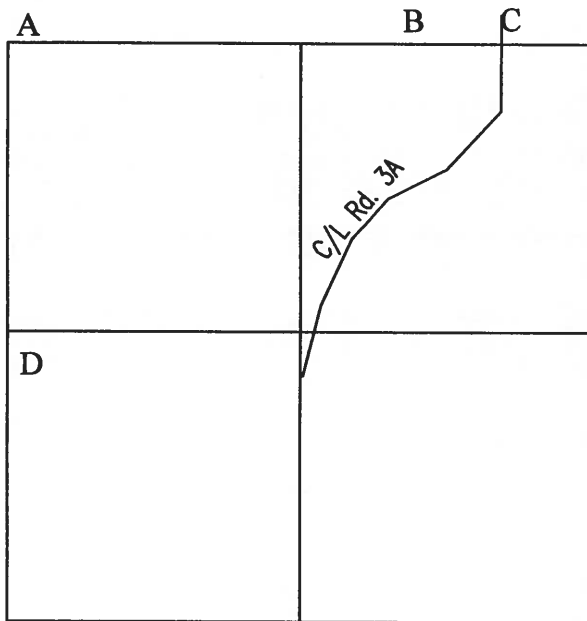
D- Found recorded iron pin 0.12' north of high point of stone (6" x 12" x 13"). Lowered stone to 12" below grade. Placed 5/8" iron pin on N/S/ stone. Top of iron pin is over high point of stone. Stone is 5.4' south of north edge 10' pavement.

- 46.27' E.N.E. to "+" east end stone headwall
- 81.54' E. to spike N/S 48" Oak
- 35.73' S.W. to 1/2" iron pin on south ditch bank
- 61.68' E. to R.R. spike centerline Rd. 3-A

9/28/92

R.W, S.K.

Ties to stone headwall are no longer good.
81.51' E. to spike north side 48" oak.
45.80' E.S.E. to sawed "+" in top of stone deck.
13.78' S.W. to 5/8" iron pin on north ditch bank.



COUNTY: HENRY

TOWNSHIP: DAMASCUS

T- 5 -N R- 8 -E

SECTION: 15

7/22/80 R.W., J.J., C.S.

54.12' (82 lks) R.W. 5/11/00

C - Set center punched R.R. spike on North line Section 15 and 57.00' east of stone at N.W. cor.; N.E. 1/4; N.E. 1/4 Sec. 15. P.K.'s 6' north and west. R.R. spike is 10.0' east of west edge 16' pavement. R.R. spike is 6.0' south of north edge 10' pavement.

57.00' W. to top center of stone

22.84' N.E. to duplex S/S power pole

28.20' S.E. to duplex NE/S underground cable marker post

9/30/92 R.W, S.K.

32.05' N.E. to duplex(new) s/s power pole.

60.53' W. to Pk nail n/s 8" hickory.

5/11/00 Section 10 & 15 Intersection Rds. 3A & Q

RR spike set 57.00' east of stone at NW corner, NE 1/4, NE 1/4, Sec. 15 was based on road plans for Dielman Road #290 (Field Book #60) and did not reference the stone recorded as "XV" of survey in Vol.2, P. 128 of survey records.

The centerline of Rd. 3A is located 82 links east of the stone at the NW corner, NE 1/4, NE 1/4, of Section 15, Damascus Twp., per survey in Vol. 2, p. 128.

D - Found Harrow tooth from state highway references.

108.20' N.E. to nail/shiner in telephone pole

89.80' S.S.W. to nail/shiner in power pole

23.55' W. to near face 3" pipe

9/30/92 R.W, S.K.

Found small RR spike on surface 6.2' east of west edge 22' pavement.

39.19' S.W. to "+" south end alum. CMP.

108.38' N.N.E. to duplex w/s pedestal post.

16.83' W. to "+" north end alum. CMP.