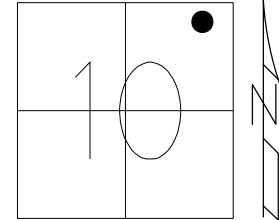


O.D.O.T. DISTRICT 2 SURVEY OFFICE (USE ONLY)

PERSONNEL _____ REFERENCE NO. 35 A SHEET 8 OF 27
 NOTES MILLER DATE 5/3/23 ROUTE SR 65
 H.C. MILLER WEATHER CLOUDY COUNTY HENRY
 R.C. RHOADES TEMP. 48° TOWNSHIP DAMASCUS
 DWG BY RHOADES PID 119500 SECTION 10
 T 5 N R 8 E

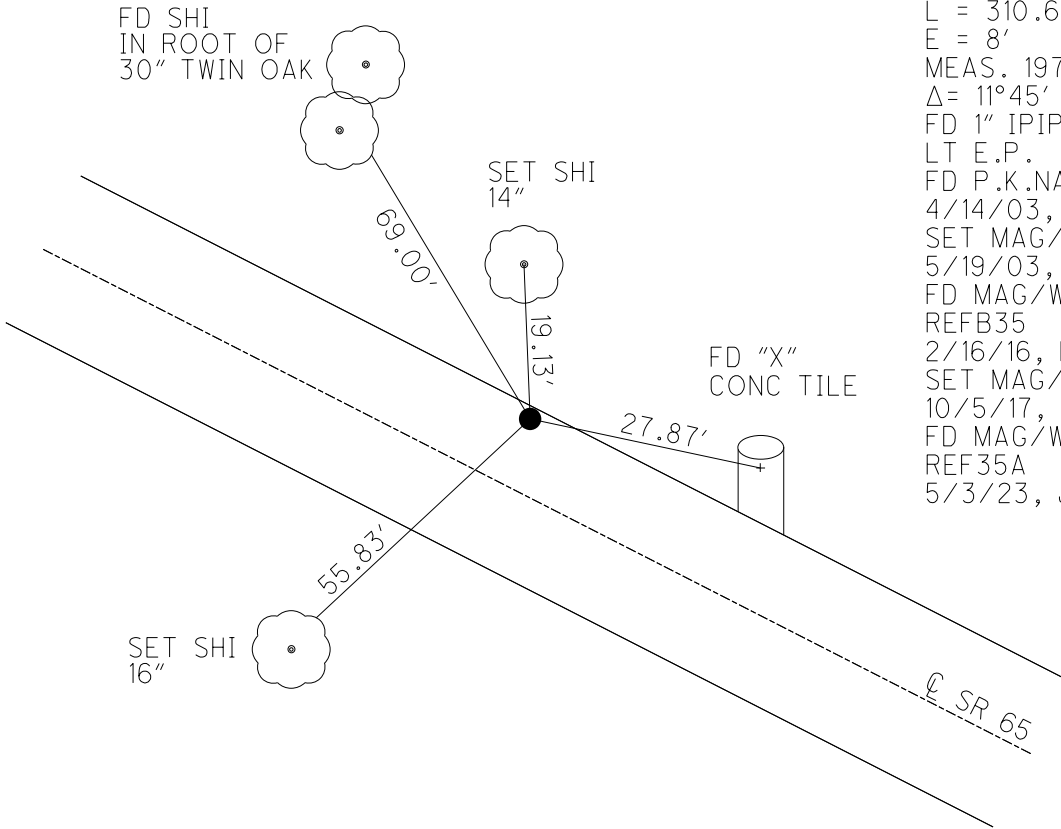
TYPE MONUMENT MAG/WASHER
 ON SURFACE - ~~BELOW~~ ON _____
 OFFSET \odot PAVEMENT 8.6' LT : ~~RT~~
0.9' TO LT EDGE PAVEMENT
 STATION: 951+11.56



HORZ. DATUM: NAD83 2011 GEOID: NAVD88 2018
 GRID: NORTHING: 640173.816 EASTING: 1578007.383

HEN LDP
 N: 497397.008
 E: 212387.894

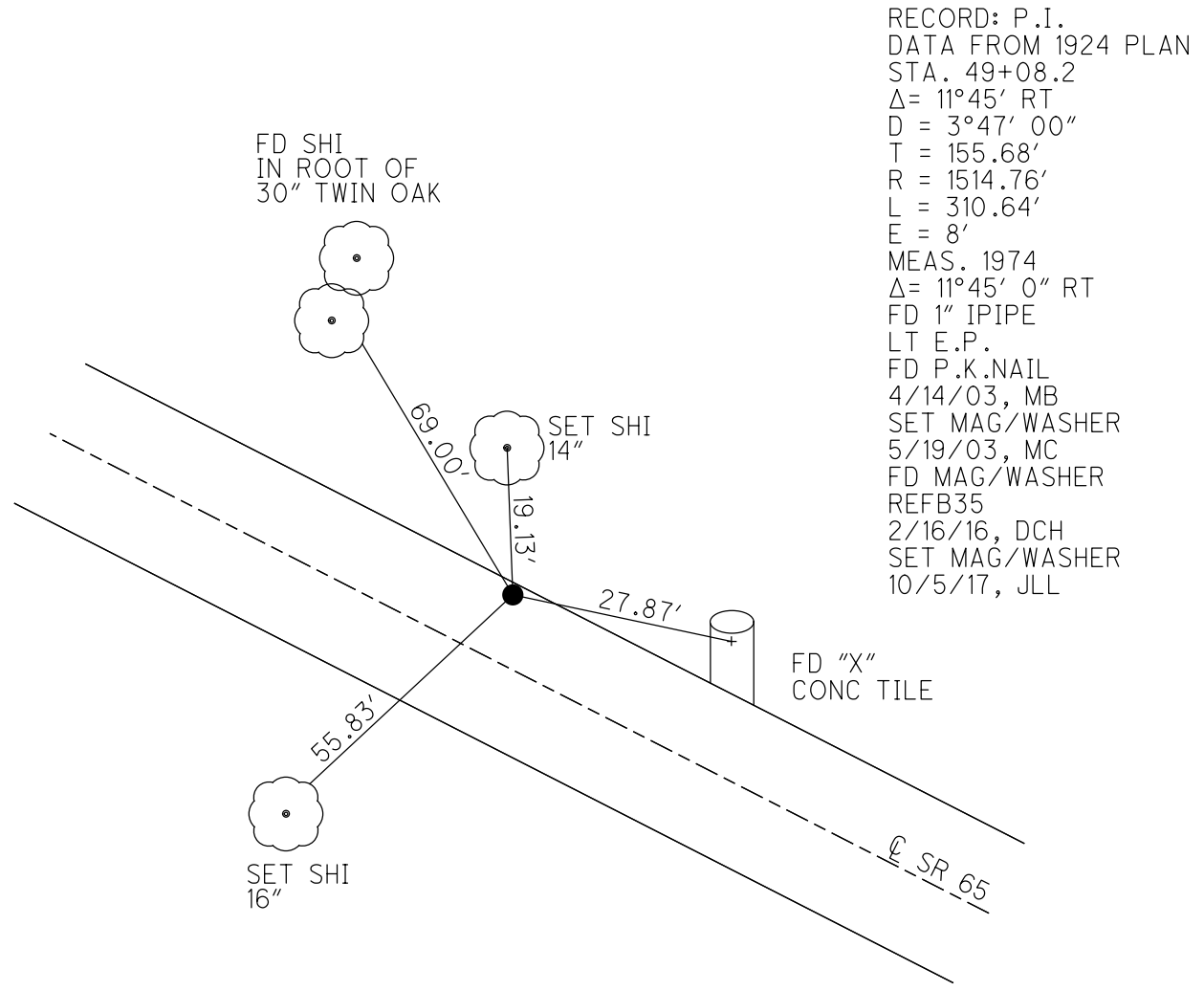
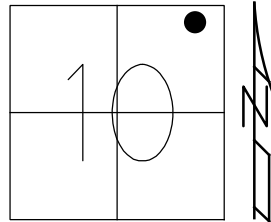
RECORD: P.I.
 DATA FROM 1924 PLAN
 STA. 49+08.2
 $\Delta = 11^\circ 45' RT$
 $D = 3^\circ 47' 00''$
 $T = 155.68'$
 $R = 1514.76'$
 $L = 310.64'$
 $E = 8'$
 MEAS. 1974
 $\Delta = 11^\circ 45' 0'' RT$
 FD 1" IPIPE
 LT E.P.
 FD P.K. NAIL
 4/14/03, MB
 SET MAG/WASHER
 5/19/03, MC
 FD MAG/WASHER
 REFB35
 2/16/16, DCH
 SET MAG/WASHER
 10/5/17, JLL
 FD MAG/WASHER
 REF35A
 5/3/23, JAM



O.D.O.T. DISTRICT 2 SURVEY OFFICE (USE ONLY)

PERSONNEL _____ REFERENCE NO. 35 A SHEET 8 OF 24
 NOTES RHOADES DATE 4-17-17 ROUTE SR 65
 H.C. LEU WEATHER CLOUDY COUNTY HENRY
 R.C. HELDMAN TEMP. 67° TOWNSHIP DAMASCUS
 _____ SECTION 10
 _____ T 5 N R 8 E

TYPE MONUMENT MAG/WASHER
 ON SURFACE - ~~BELOW~~ ON
~~LEFT - C PAV'T - RIGHT~~ 8.6'
0.9' TO LT EDGE PAVEMENT
 S.L.M. 951+11.56
 Grid: Northing: 640173.816 Easting: 1578007.383



O.D.O.T. DISTRICT 2 SURVEY OFFICE

PERSONNEL

REFERENCE NO. 35-A

SHEET 12 OF 28

NOTES BARNHISEL - HC

H.C. _____

DATE 04/14/03

ROUTE 65

R.C. GLASS

WEATHER SUNNY

COUNTY HENRY

RYALL

TEMP. +56°

TOWNSHIP DAMACUS

SECTION 10

T 5 N R 8 E

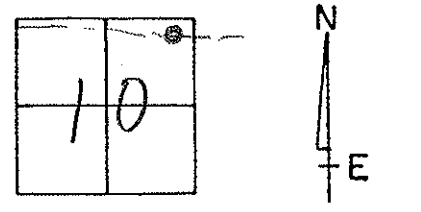
TYPE MONUMENT PK NAIL

ON SURFACE - BELOW yes

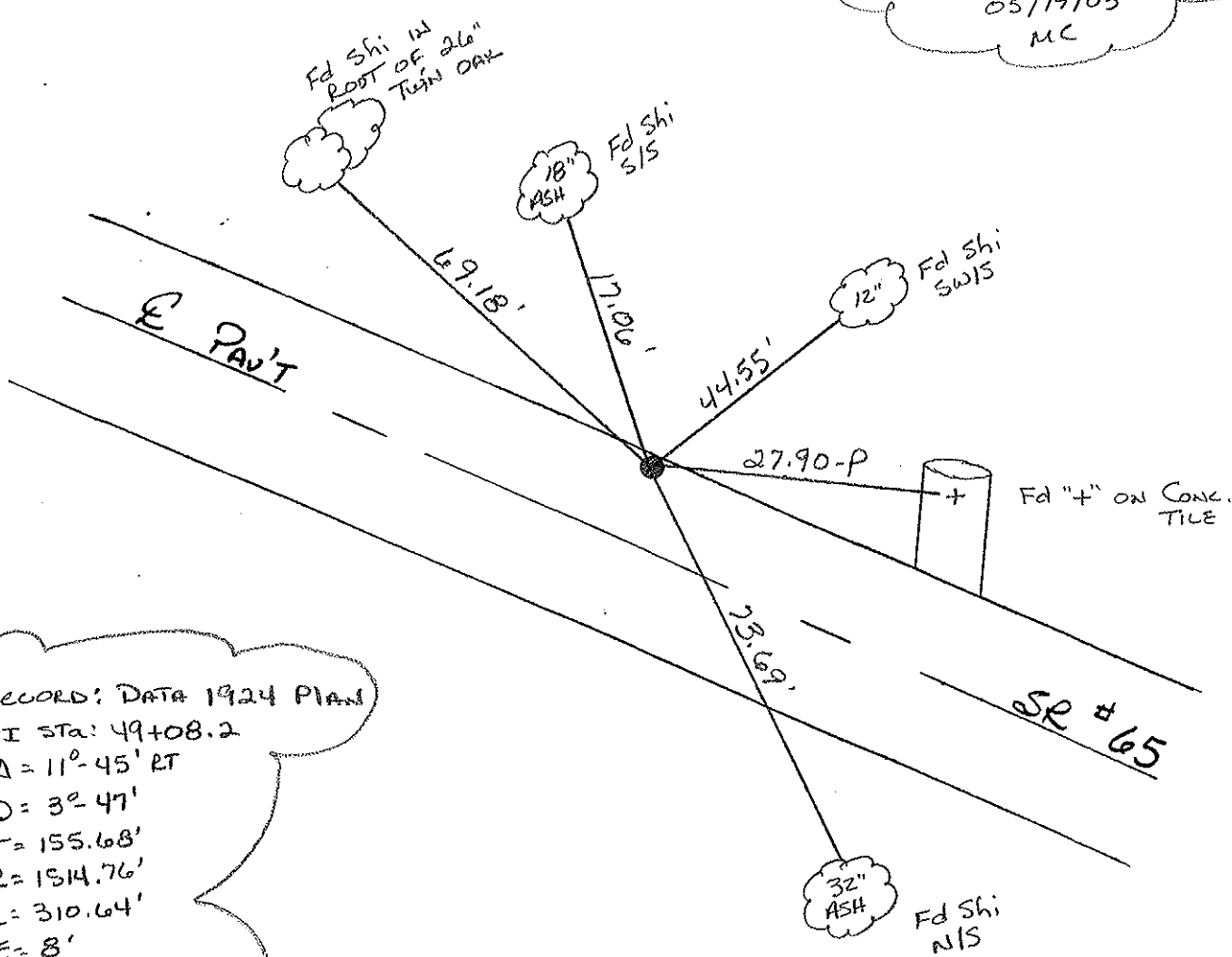
LEFT - & PAV'T. - RIGHT 9.1'

0.9' TO LT EDGE PAVEMENT

S.L.M. 950+60



RESET MAG NAIL & WASHEN
 05/19/03
 MC



RECORD: DATA 1924 PLAN
 PI STA: 49+08.2
 $\Delta = 11^{\circ} 45' RT$
 $D = 32.47'$
 $T = 155.68'$
 $R = 1514.76'$
 $L = 310.64'$
 $E = 8'$
 Meas. 1974
 $\Delta = 11^{\circ} 45' RT$
 Fd 1" I. Pipe @ LT E.P.

O.D.O.T. DISTRICT 2 SURVEY OFFICE

PERSONNEL

REFERENCE NO. 35-A

SHEET OF

NOTES VAN DUSEN

H.C. RIPPLE

R.C. BARBOUR

GEYMAN

DATE 9-20-91

WEATHER CLEAR

TEMP. +56° F

ROUTE 65

COUNTY HENRY

TOWNSHIP DAMASCUS

SECTION 10

T 5 N R 8 E

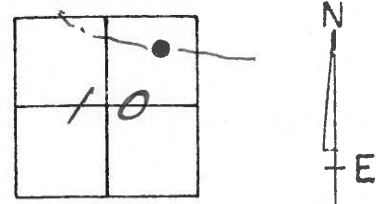
TYPE MONUMENT P.K. & WASHER

ON SURFACE - BELOW yes

LEFT- & PAV'T. - RIGHT 8.2'

ON TO LT. EDGE PAVEMENT

S.L.M. 251+71



Record: DATA 1924 PLAN

PI STA: 49+08.2

$\Delta = 11^{\circ} 45' RT$

$D = 3^{\circ} 47'$

$T = 155.68'$

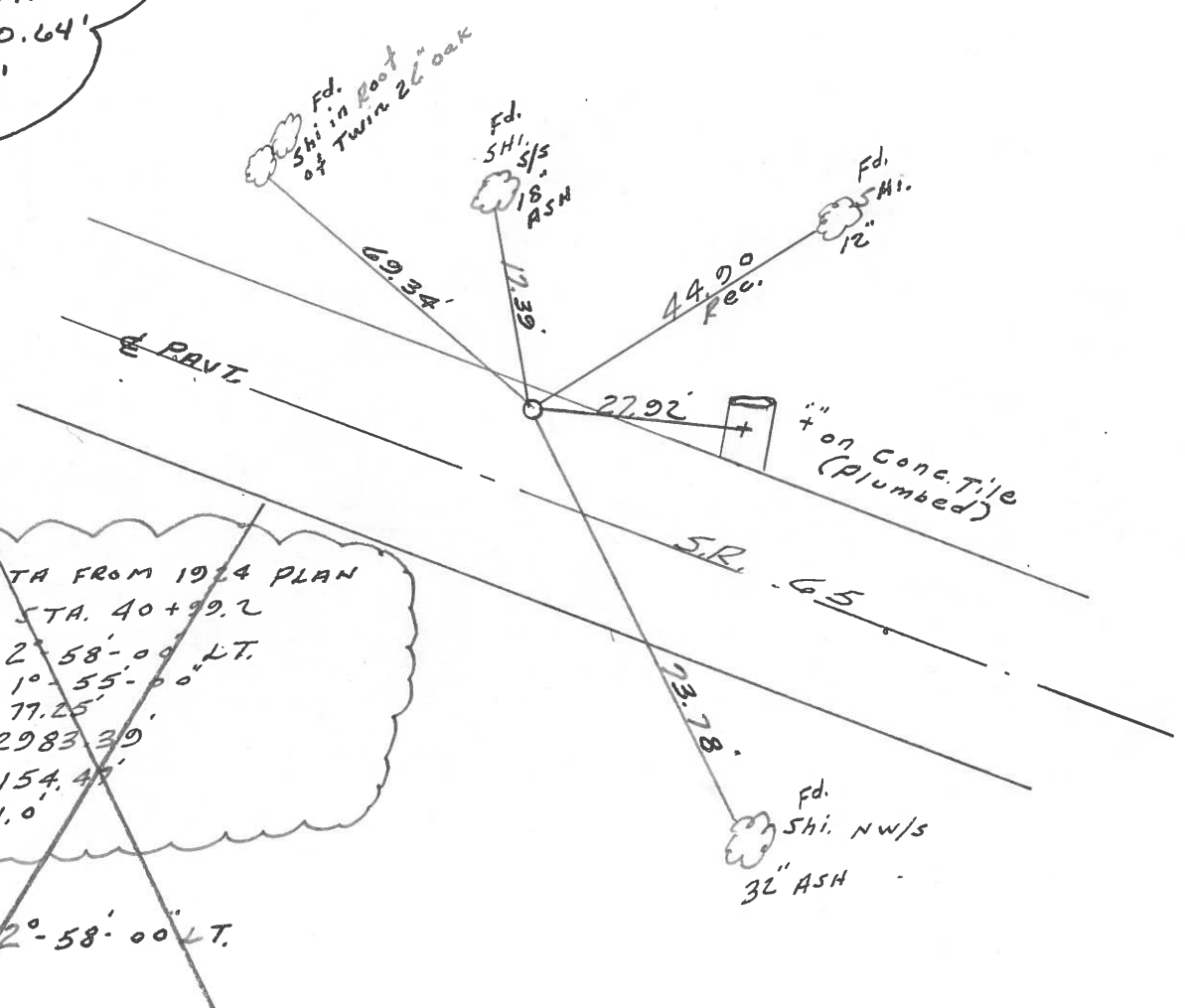
$R = 1514.76'$

$L = 310.64'$

$E = 8'$

CORRECTED
2-11-02
MB

SET P.K./WASHER
3-5-92
BVD



~~DATA FROM 1924 PLAN
P.I. STA. 40+99.2
 $\Delta = 2^{\circ} 58' 00'' LT.$
 $D = 1^{\circ} 55' 00''$
 $T = 77.25'$
 $R = 2983.39'$
 $L = 154.49'$
 $E = 1.0'$~~

~~P.I.
 $\Delta = 2^{\circ} 58' 00'' LT.$~~

ODOT. DISTRICT 2 SURVEY OFFICE

SHEET _____ OF _____

County HENRY S.R. 65

Date 2-2-84

Township DAMASCUS

Weather Clear

Section 10

Temp. 35°

T5N, R8E

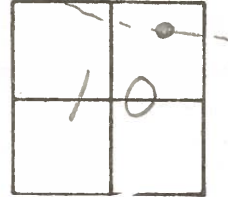
Personnel HOFFMAN

LOGHKE H.C.

HOUSEHOLDER R.C.

BARNHISEL

35-A



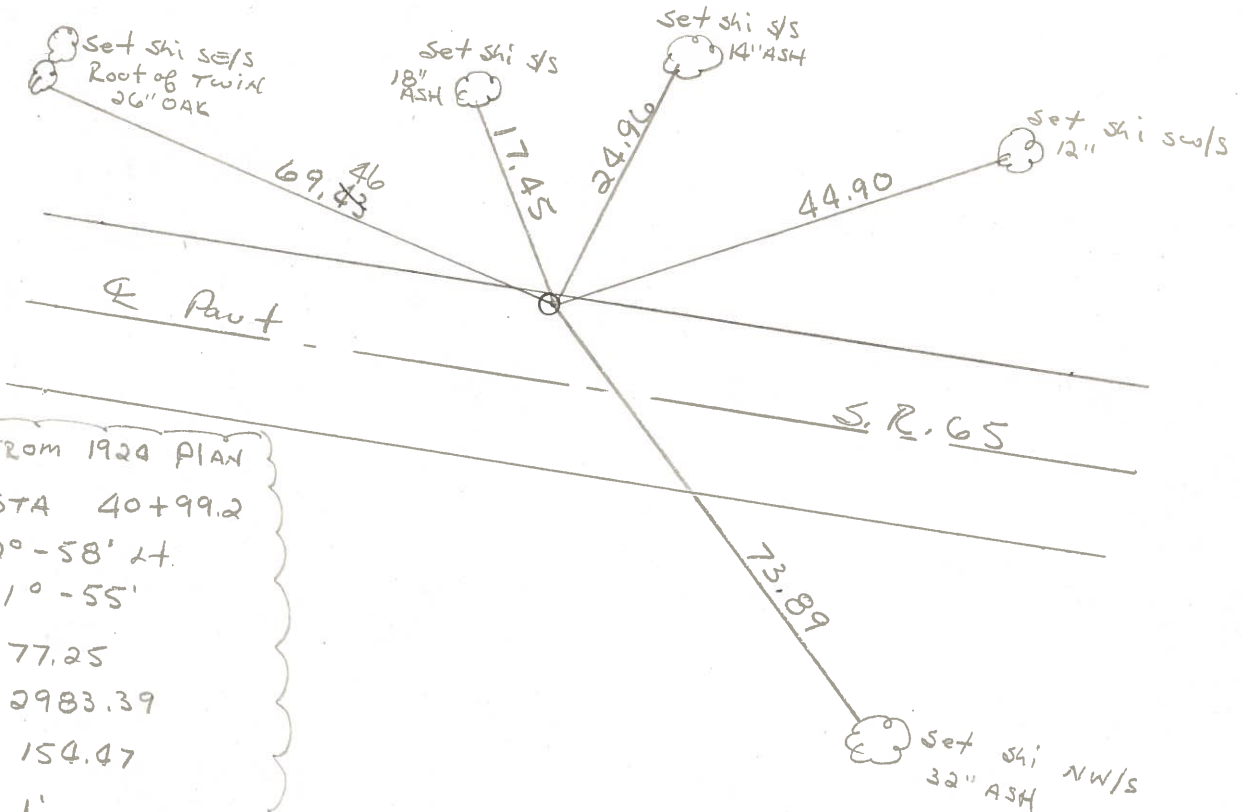
Fd 1" IRON PIPE 2" Below surface
8.2' Lt of ϕ Part
ON Lt. EP.

SLM 951+13

SET PK/WASHER

9-17-84

S.W.H.



DATA FROM 1924 PLAN

P.I. STA 40+99.2

$\Delta = 2^{\circ}-58'$ Lt.

D = 1' - 55"

T = 77.25

R = 2983.39

L = 154.47

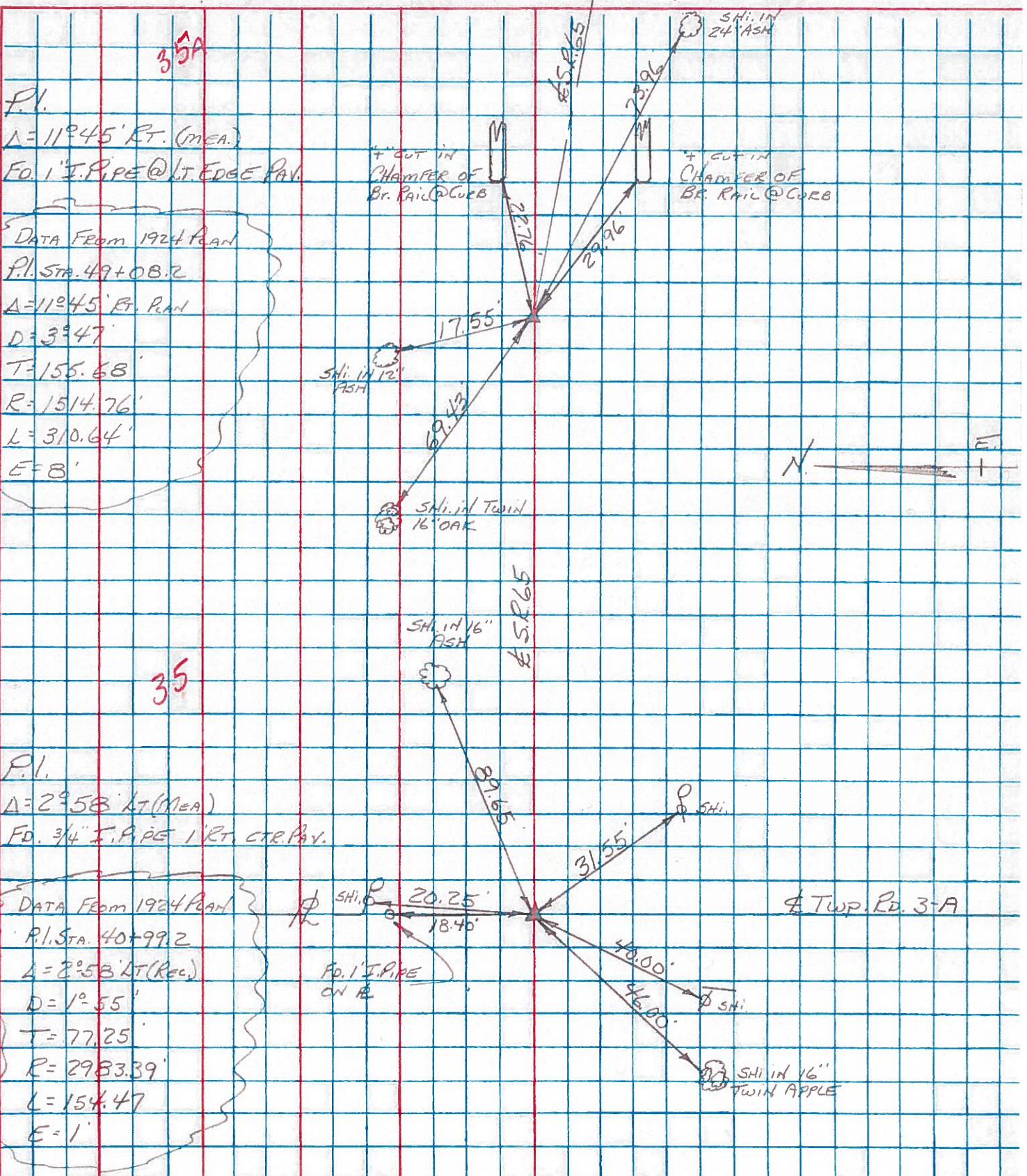
E = 1'

P.I.

$\Delta = 2^{\circ}-58'$ Lt (MEAS 1974)

PERSONNEL	TITLE	PERSONNEL	TITLE	COUNTY	HENRY	DATE	3-5-74
BURNSIDE				S. R.	65	WEATHER	CLEAR
SMITH				SEC.		TEMP.	+47°
BOWERS							
MEAD							

DESCRIPTION $\&$ R/W CONTROL TIES LEFT CENTER LINE RIGHT JOB NO. _____



P.I.
 $\Delta = 11^\circ 45' \text{ RT. (M.E.A.)}$
 FO. 1" I. PIPE @ LT. EDGE R/W

DATA FROM 1924 PLAN
 P.I. STA. 49+08.2
 $\Delta = 11^\circ 45' \text{ RT. PLAN}$
 $D = 3^\circ 47'$
 $T = 155.68'$
 $R = 1514.76'$
 $L = 310.64'$
 $E = 8'$

P.I.
 $\Delta = 2^\circ 58' \text{ LT (M.E.A.)}$
 FO. 3/4" I. PIPE 1' RT. CTR. R/W

DATA FROM 1924 PLAN
 P.I. STA. 40+99.2
 $\Delta = 2^\circ 58' \text{ LT (Rec.)}$
 $D = 1^\circ 55'$
 $T = 77.25'$
 $R = 2983.39'$
 $L = 154.47'$
 $E = 1'$

PERSONNEL TITLE PERSONNEL TITLE

Red Beach

COUNTY Henry

DATE Nov. 1967

Knape

S. R. 65

WEATHER

Newcomb

SEC. NE 1/4 Sec. 10

TEMP.

Thompson

DESCRIPTION CONTROL POINTS DAMASCUS TWP.

JOB NO.

LEFT

CENTER LINE

RIGHT

