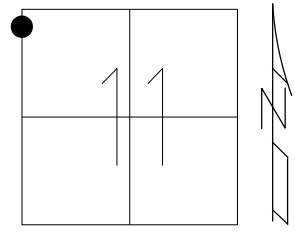


O.D.O.T. DISTRICT 2 SURVEY OFFICE (USE ONLY)

PERSONNEL _____ REFERENCE NO. 36 SHEET 9 OF 27
 NOTES MILLER DATE 5/2/23 ROUTE SR 65
 H.C. MILLER WEATHER MIST COUNTY HENRY
 R.C. RHOADES TEMP. 45° TOWNSHIP DAMASCUS
 DWG BY RHOADES PID 119500 SECTION 11
 T 5 N R 8 E

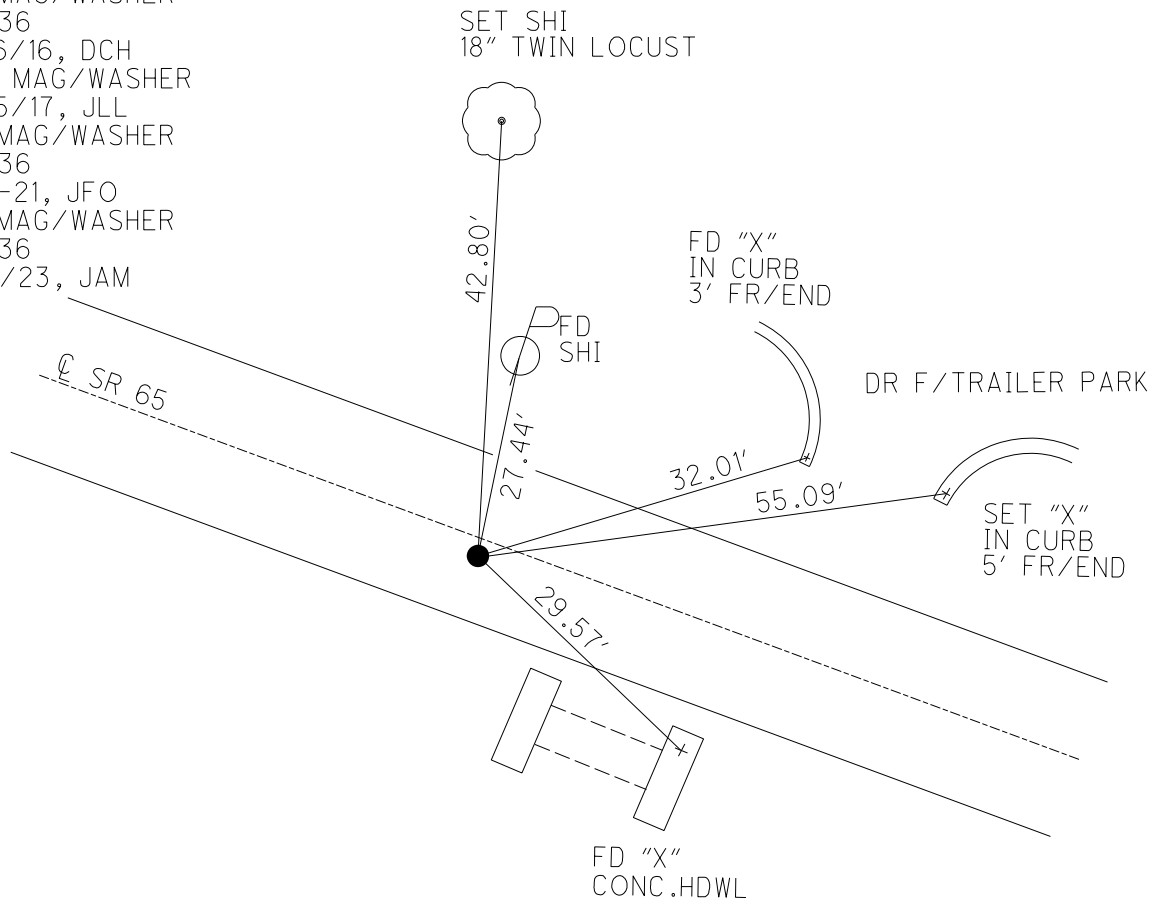
TYPE MONUMENT MAG/WASHER
 ON SURFACE - ~~BELOW~~ ON
 OFFSET \odot PAVEMENT 1.4' \pm : RT
9.5' TO RT EDGE PAVEMENT
 STATION: 956+17.47



HORIZ.DATUM: NAD83 2011 GEOID: NAVD88 2018
 GRID: NORTHING: 640082.638 EASTING: 1578470.489

RECORD:
 FD P.K./WASHER
 4/14/03, MB
 SET MAG/WASHER
 5/19/03, MC
 FD MAG/WASHER
 REF36
 2/16/16, DCH
 SET MAG/WASHER
 10/5/17, JLL
 FD MAG/WASHER
 REF36
 11-8-21, JFO
 FD MAG/WASHER
 REF36
 5/2/23, JAM

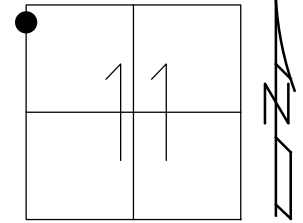
HEN LDP
 N: 497314.398
 E: 212852.643



O.D.O.T. DISTRICT 2 SURVEY OFFICE (USE ONLY)

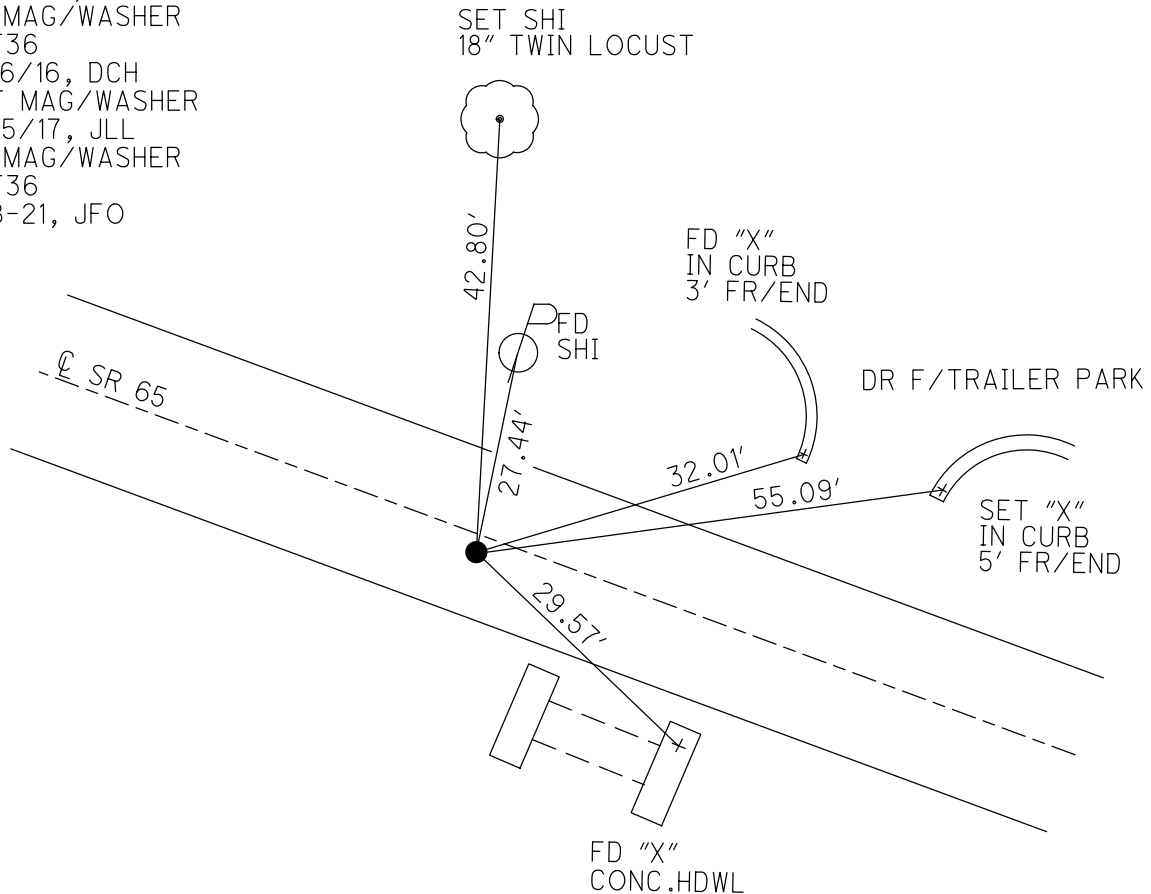
PERSONNEL _____ REFERENCE NO. 36 SHEET 9 OF 24
 NOTES RHOADES DATE 4/27/17 ROUTE SR 65
 H.C. LEU WEATHER CLOUDY COUNTY HENRY
 R.C. HELDMAN TEMP. 67° TOWNSHIP DAMASCUS
 DWG BY RHOADES PID PAVETRAIN SECTION 11
 T 5 N R 8 E

TYPE MONUMENT MAG/WASHER
 ON SURFACE - ~~BELOW~~ ON
 OFFSET \odot PAVEMENT 1.4' \pm : RT
9.5' TO RT EDGE PAVEMENT
 STATION: 956+17.47



HORZ. DATUM: NAD83 2011 GEOID: NAVD88 2018
 GRID: NORTHING: 640082.638 EASTING: 1578470.489

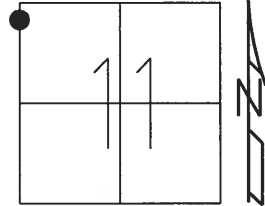
RECORD:
 FD P.K./WASHER
 4/14/03, MB
 SET MAG/WASHER
 5/19/03, MC
 FD MAG/WASHER
 REF36
 2/16/16, DCH
 SET MAG/WASHER
 10/5/17, JLL
 FD MAG/WASHER
 REF36
 11-8-21, JFO



O.D.O.T. DISTRICT 2 SURVEY OFFICE (USE ONLY)

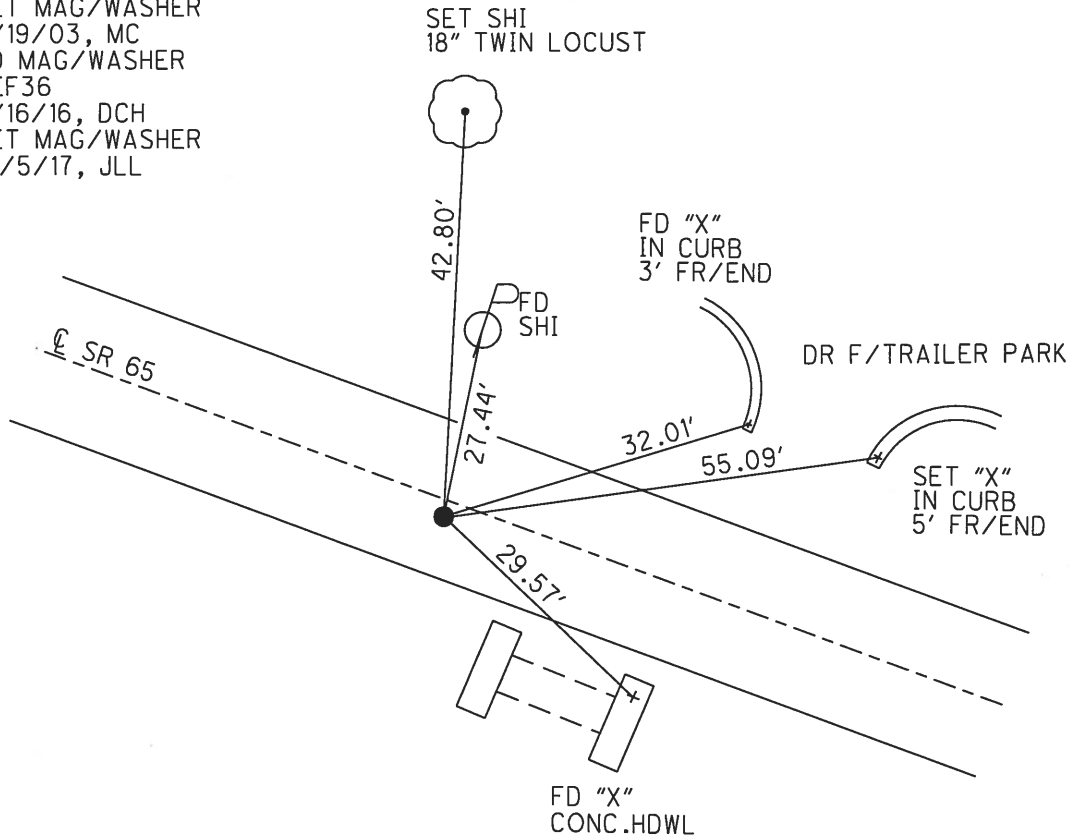
PERSONNEL _____ REFERENCE NO. 36 SHEET 9 OF 24
 NOTES RHOADES DATE 4-27-17 ROUTE SR 65
 H.C. LEU WEATHER CLOUDY COUNTY HENRY
 R.C. HELDMAN TEMP. 67° TOWNSHIP DAMACUS
 _____ SECTION 11
 _____ T 5 N R 8 E

TYPE MONUMENT MAG/WASHER
 ON SURFACE - ~~BELOW~~ ON _____
~~LEFT~~ - ☉ PAV'T - RIGHT 1.4'
9.5' TO RT EDGE PAVEMENT
 S.L.M. 956+17.47



Grid: Northing: 640082.649 Easting: 1578470.566

RECORD:
 FD P.K./WASHER
 4/14/03, MB
 SET MAG/WASHER
 5/19/03, MC
 FD MAG/WASHER
 REF36
 2/16/16, DCH
 SET MAG/WASHER
 10/5/17, JLL



O.D.O.T. DISTRICT 2 SURVEY OFFICE

PERSONNEL _____

REFERENCE NO. 36

SHEET 13 OF 26

NOTES BARNHISEL - MC

H.C. _____

DATE 04/14/03

ROUTE 65

R.C. GLASS

WEATHER SUNNY

COUNTY HENRY

RYALL

TEMP. +56°

TOWNSHIP DAMACUS

SECTION 11

T 5 N R 8 E

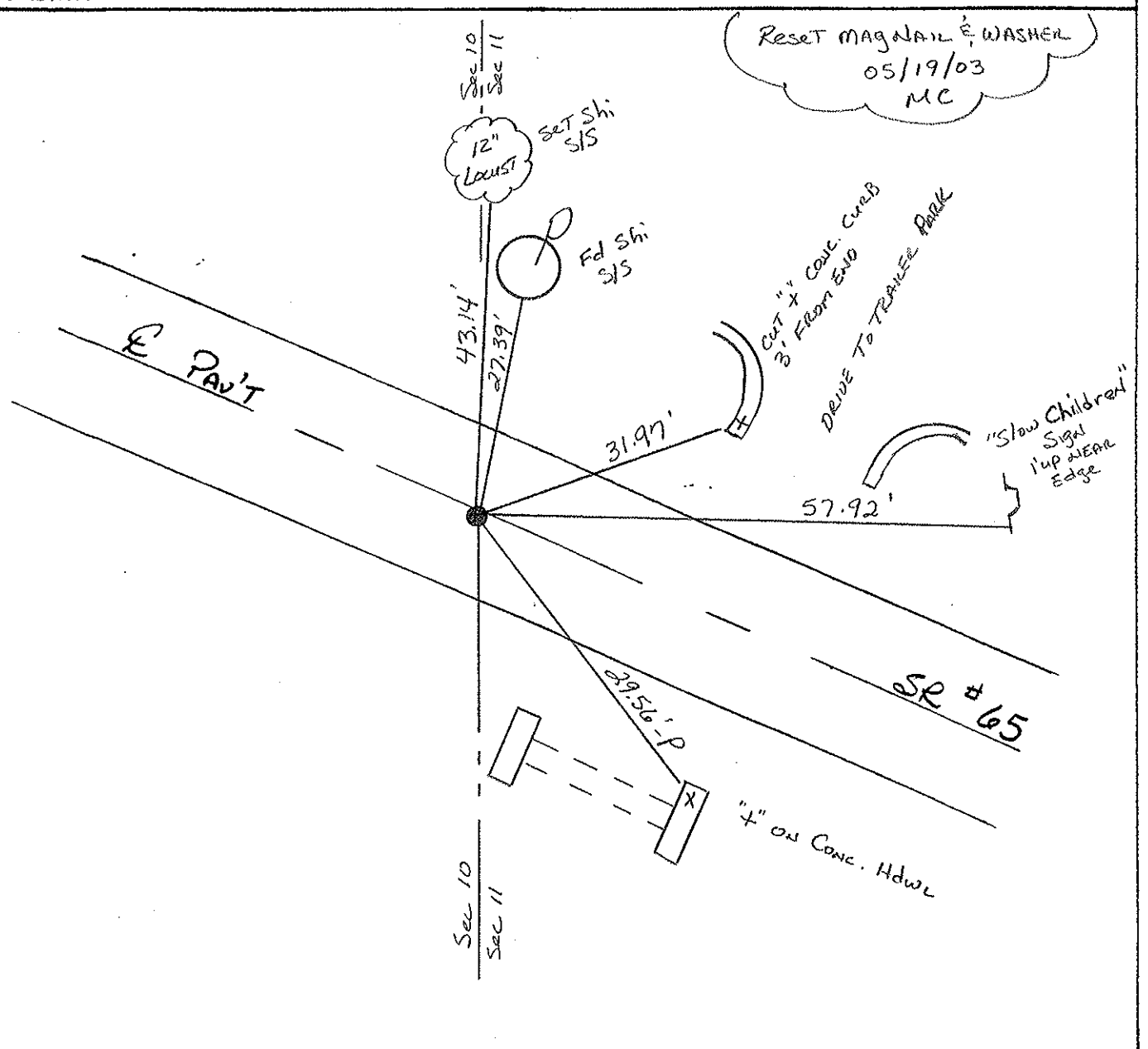
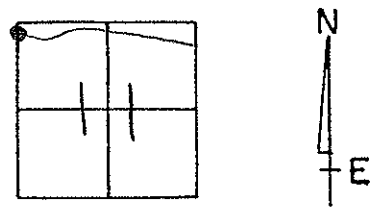
TYPE MONUMENT PK & WASHER

ON SURFACE - BELOW Yes

LEFT - & PAV'T. - RIGHT 0.5'

9.5' TO RT EDGE PAVEMENT

S.L.M. 955+31



Reset MAGNAIL & WASHER
05/19/03
MC

E PAV'T

SR # 65

"+" ON CONC. HDWL

"Slow Children"
Sign
1' up NEAR
Edge

CUT "x" CONC. CURB
3' FROM END
DRIVE TO TRAVEL PAULK

12" LOUVER
SET SHI
SIS
Fd SHI
SIS

Sec 10
Sec 11

Sec 10
Sec 11

29.56'-P

43.14'

27.39'

31.97'

57.92'

O.D.O.T. DISTRICT 2 SURVEY OFFICE

PERSONNEL _____

REFERENCE NO. 36

SHEET _____ OF _____

NOTES BARNHISEL

H.C. BARBOUR

R.C. Geyman

Ripple

DATE 9-20-91

WEATHER Clear

TEMP. +56°

ROUTE 65

COUNTY HENRY

TOWNSHIP DAMASCUS

SECTION 11

T 5 N R 8 E

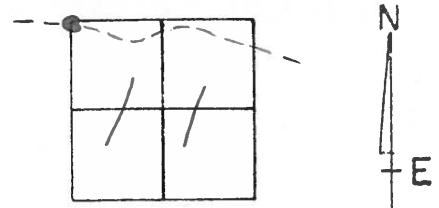
TYPE MONUMENT P.K. & WASHER

ON SURFACE - BELOW yes

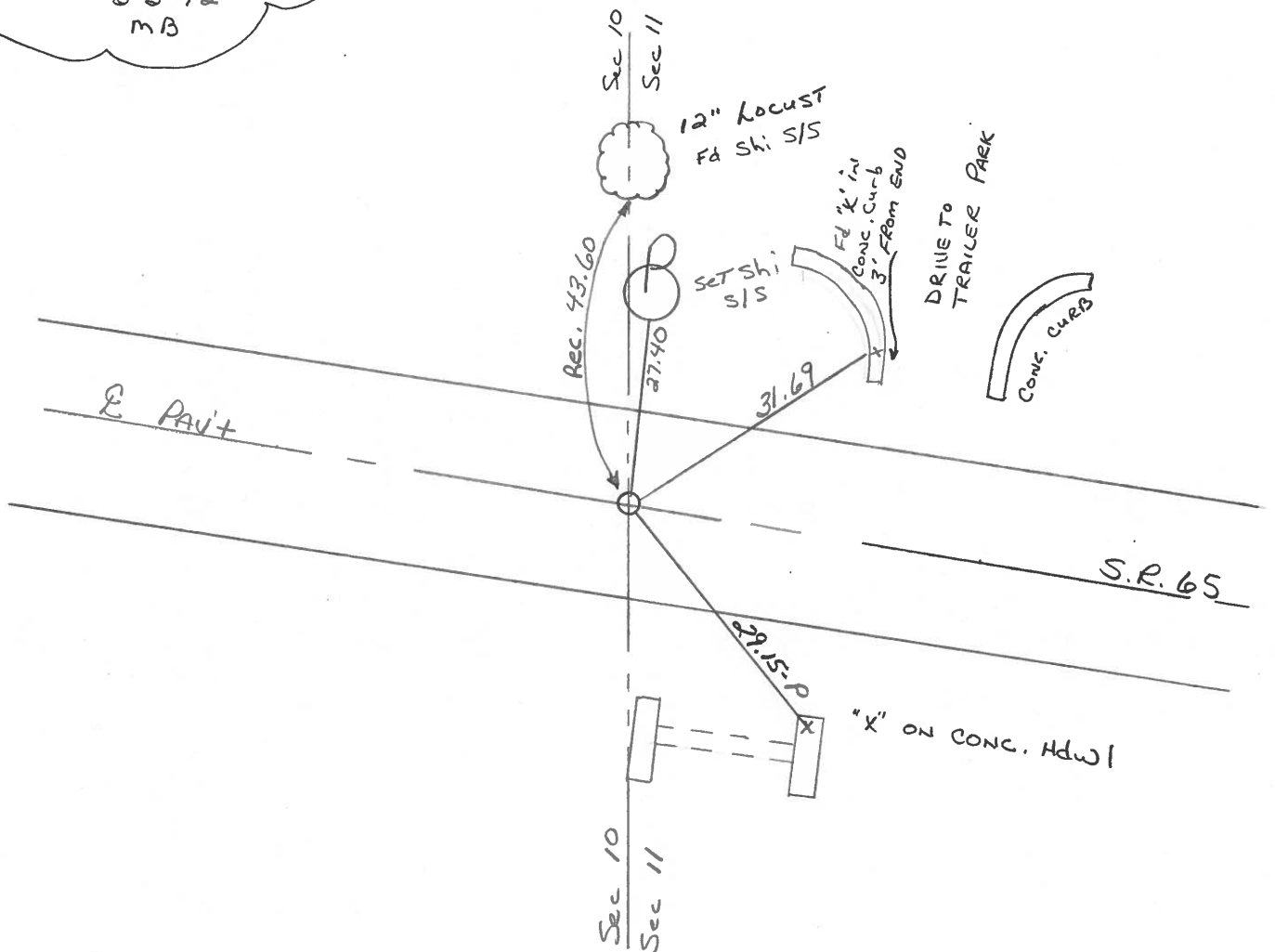
LEFT - & PAV'T. - RIGHT yes

9.4 TO LT EDGE PAVEMENT

S.L.M. 956+42



Set P.K. & Washer
 3-5-92
 MB



County Henry S.R. 65

Township DAMASCUS

Section 11

T5N, R8E

Personnel Hoffman

Householder

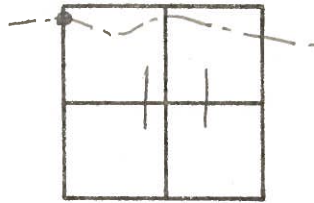
Loehrke

36

Date 7-19-82

Weather Cloudy - Humid

Temp. +80°



Fd 1" I. D. IRON PIPE 2" Below surface

on & PAUT

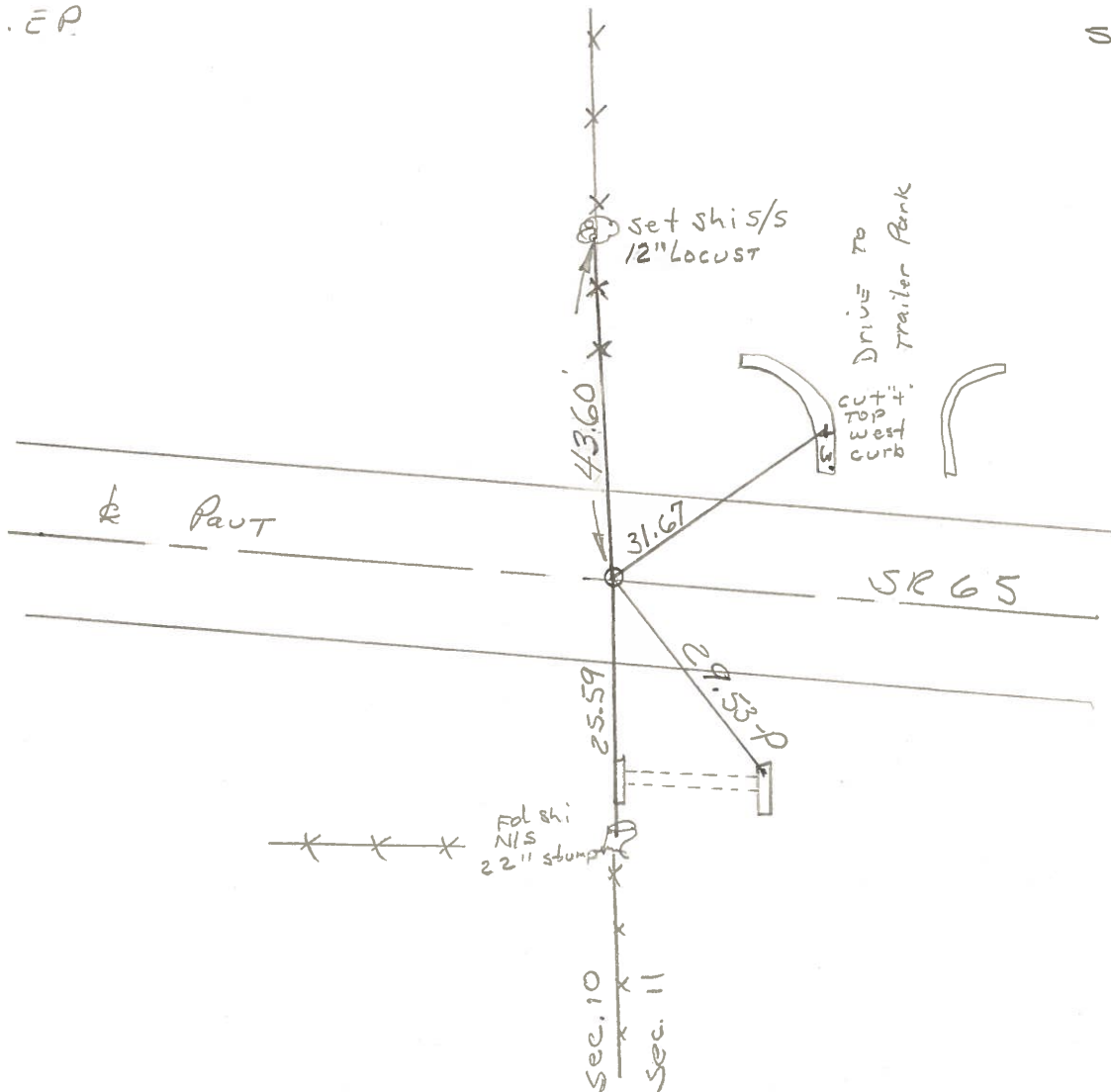
9.4' TO N.E.P.

9.7' TO S.E.P.

SET PK/WASHER

9-17-84

S.W.H.



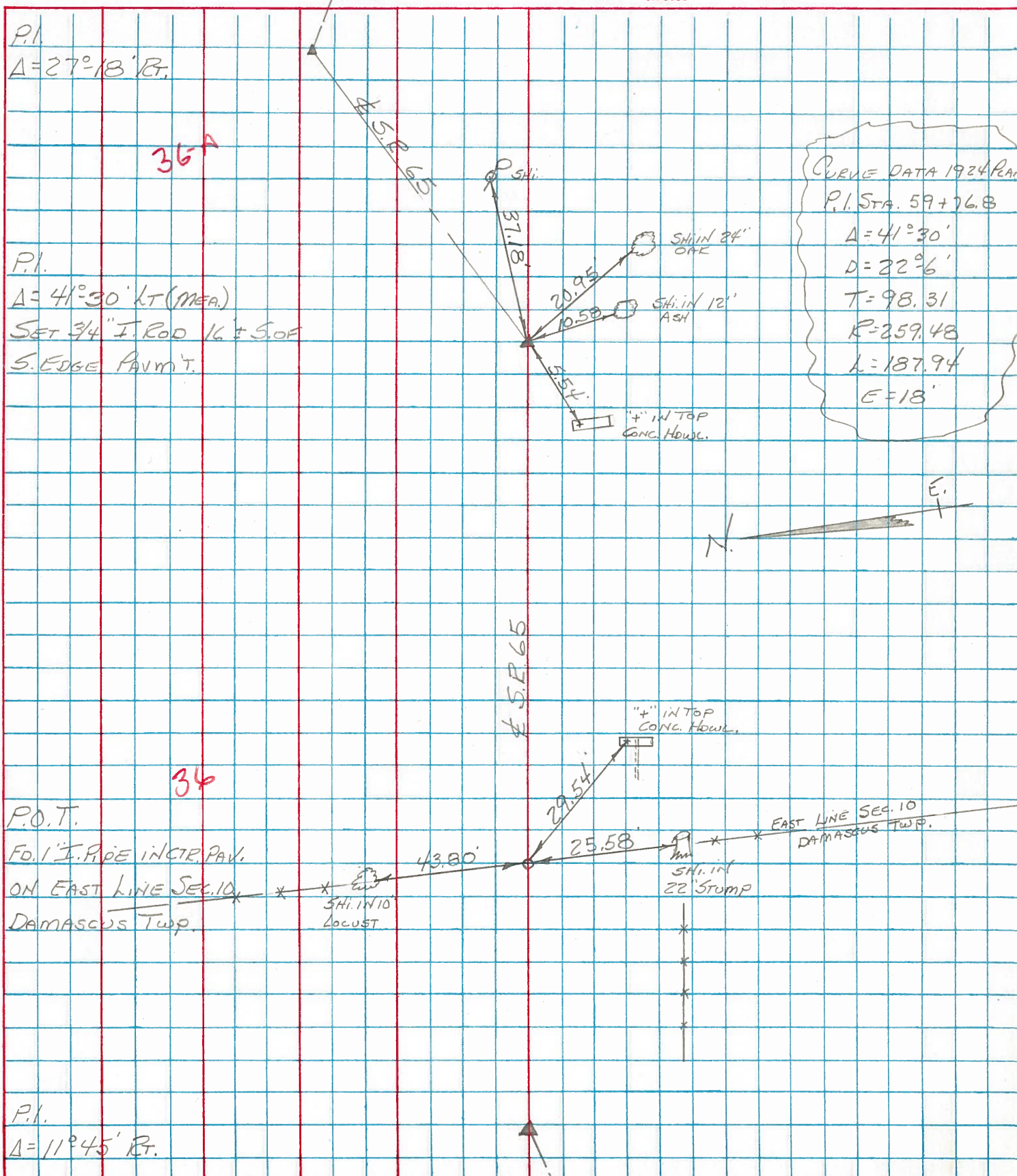
PERSONNEL	TITLE	PERSONNEL	TITLE
BURNSIDE			
SMITH			
BOWERS			
MEAD			

COUNTY HENRY DATE 3-6-74

S. R. 65 WEATHER CLOUDY

SEC. _____ TEMP. +43°

DESCRIPTION ± RW CONTROL TIES JOB NO. _____



PERSONNEL TITLE PERSONNEL TITLE

Red Beach

COUNTY Henry

DATE Nov. 1967

Knape

S. R. 65

WEATHER

Newcomb

SEC. NE 1/4 Sec. 10

TEMP.

Thompson

DESCRIPTION CONTROL POINTS

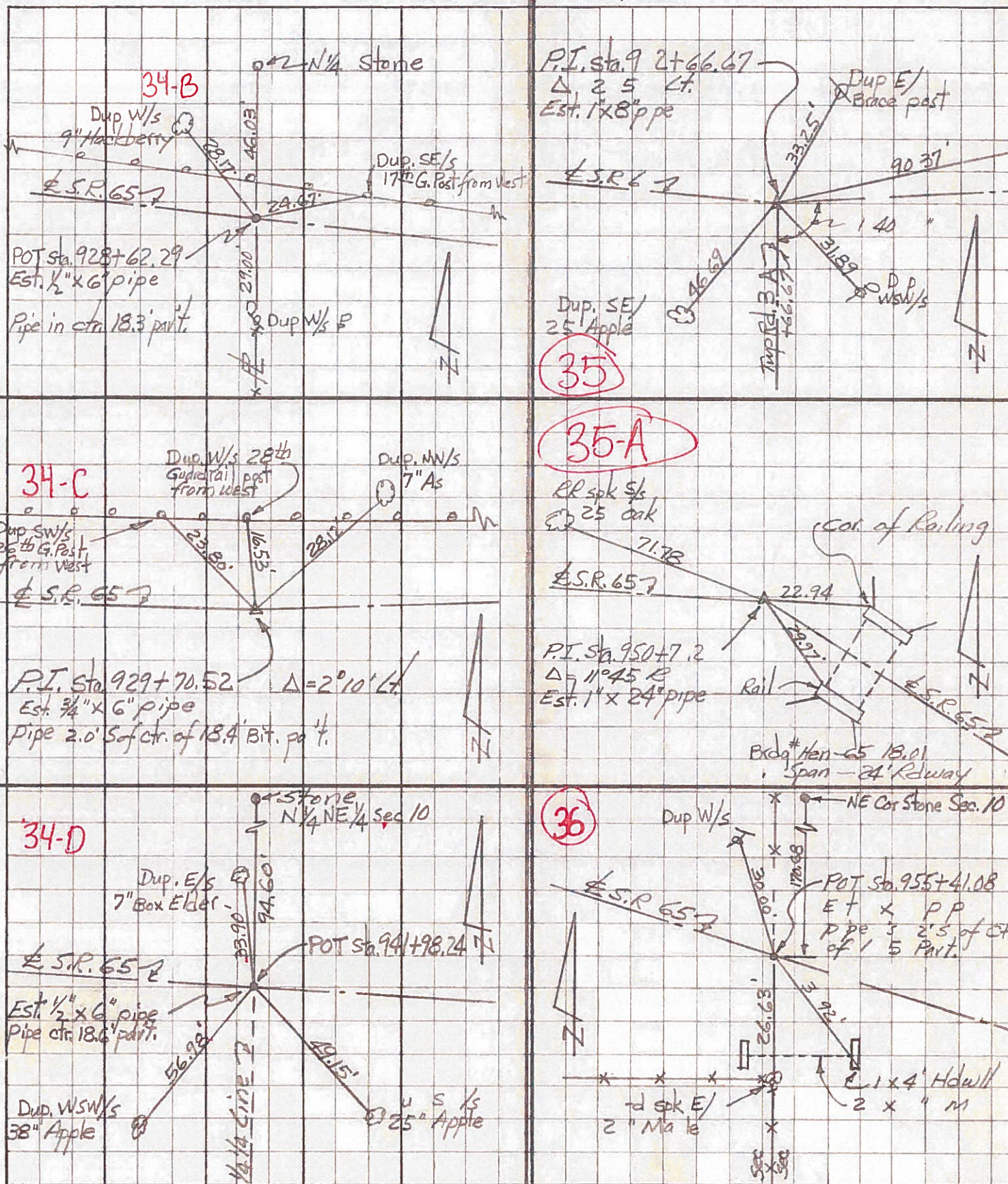
DAMASCUS TWP.

JOB NO.

LEFT

CENTER LINE

RIGHT



PERSONNEL TITLE PERSONNEL TITLE

Red Beach
Newcomb
Knappe
Thompson

COUNTY Henry DATE 21 Nov 67

S. R. 65 WEATHER

SEC. 10 Damascus Twp. TEMP.

DESCRIPTION CONTROL POINTS JOB NO.

LEFT CENTER LINE RIGHT

