

O.D.O.T. DISTRICT 2 SURVEY OFFICE (USE ONLY)

PERSONNEL

REFERENCE NO. 37

SHEET 14 OF 27

NOTES MILLER

DATE 3/16/23

ROUTE SR 65

H.C. MILLER

WEATHER CLEAR

COUNTY HENRY

R.C. NIESE

TEMP. 36°

TOWNSHIP DAMASCUS

SECTION 11

DWG BY RHOADES

PID 119500

T 5 N R 8 E

TYPE MONUMENT BARN SPIKE

~~ON SURFACE~~ - BELOW 1"

OFFSET CL PAVEMENT 16.4' LT : ~~RT~~

5.7' LT TO LT EDGE PAVEMENT

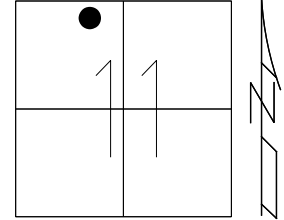
STATION: 966+75.65

HORZ. DATUM: NAD83 2011

GEOID: NAVD88 2018

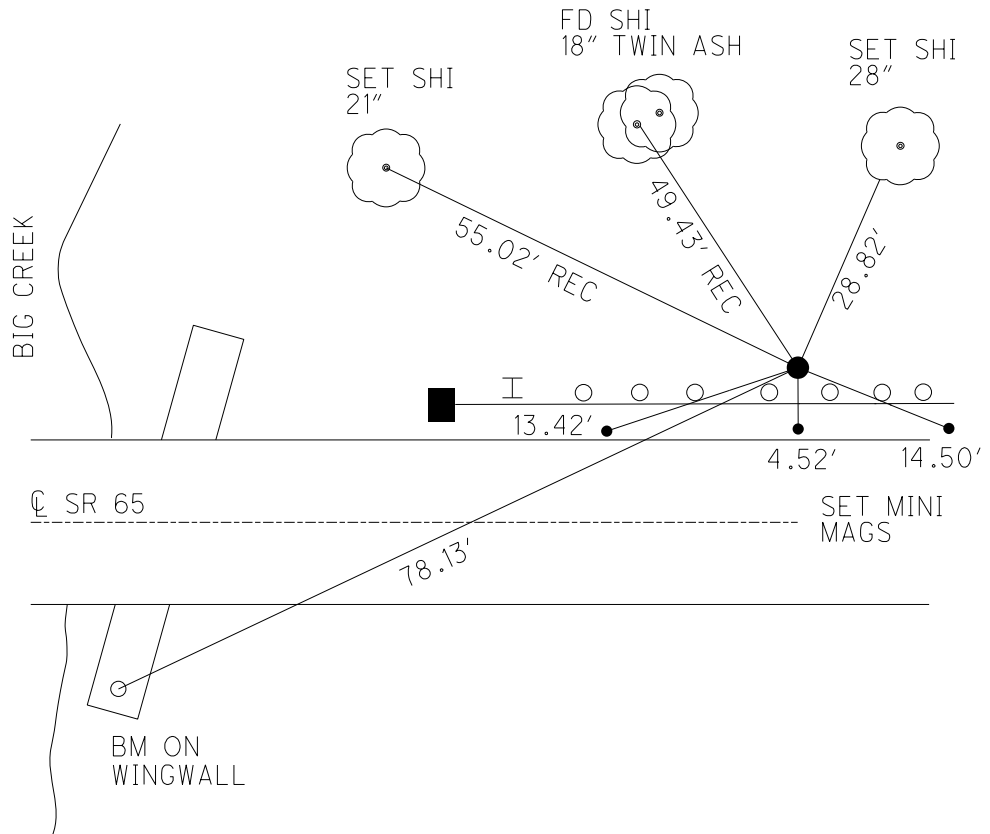
GRID: NORTHING: 640221.817

EASTING: 1579491.904



RECORD: P.I.
 DATA FROM 1924 PLAN
 STA. 64+86.3
 = 27°18'
 D = 17°24' 00"
 T = 80'
 R = 329.42'
 L = 156.96'
 E = 9.50'
 FD 1" IPIN
 SET P.K. NAIL
 IN CONC. BASE
 OF I-BEAM POST
 1991
 FD IPIN
 4/14/03, MB
 SET IPIN
 5/19/03, MC
 FD NAIL
 REF 37
 2/16/16, DCH
 FD BARN SPIKE
 REF 37
 3/16/23, TDN

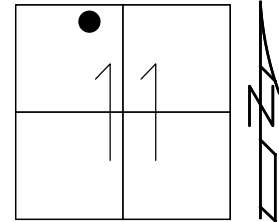
HEN LDP
 N: 497472.327
 E: 213871.350



O.D.O.T. DISTRICT 2 SURVEY OFFICE (USE ONLY)

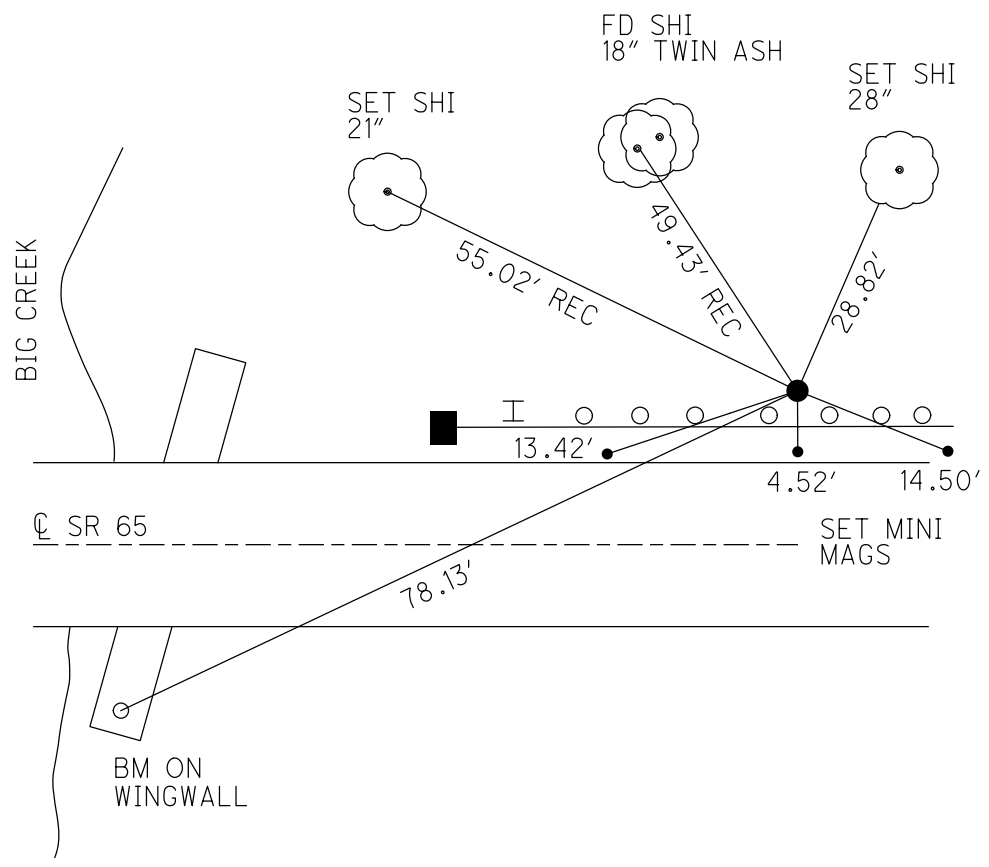
PERSONNEL _____ REFERENCE NO. 37 SHEET 11 OF 24
 NOTES MILLER DATE 3/16/23 ROUTE SR 65
 H.C. MILLER WEATHER CLEAR COUNTY HENRY
 R.C. NIESE TEMP. 36° TOWNSHIP DAMASCUS
 DWG BY RHOADES PID R/W SECTION 11
 T 5 N R 8 E

TYPE MONUMENT BARN SPIKE
~~ON SURFACE~~ - BELOW 1"
 OFFSET \odot PAVEMENT 16.4' LT : ~~RT~~
5.7' LT TO LT EDGE PAVEMENT
 STATION: 966+75.65



HORZ. DATUM: NAD83 2011 GEOID: NAVD88 2018
 GRID: NORTHING: 640221.817 EASTING: 1579491.904

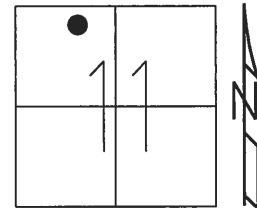
RECORD: P.I.
 DATA FROM 1924 PLAN
 STA. 64+86.3
 = 27°18'
 D = 17°24' 00"
 T = 80'
 R = 329.42'
 L = 156.96'
 E = 9.50'
 FD 1" IPIN
 SET P.K. NAIL
 IN CONC.BASE
 OF I-BEAM POST
 1991
 FD IPIN
 4/14/03, MB
 SET IPIN
 5/19/03, MC
 FD NAIL
 REF37
 2/16/16, DCH
 FD BARN SPIKE
 REF37
 3/16/23, TDN



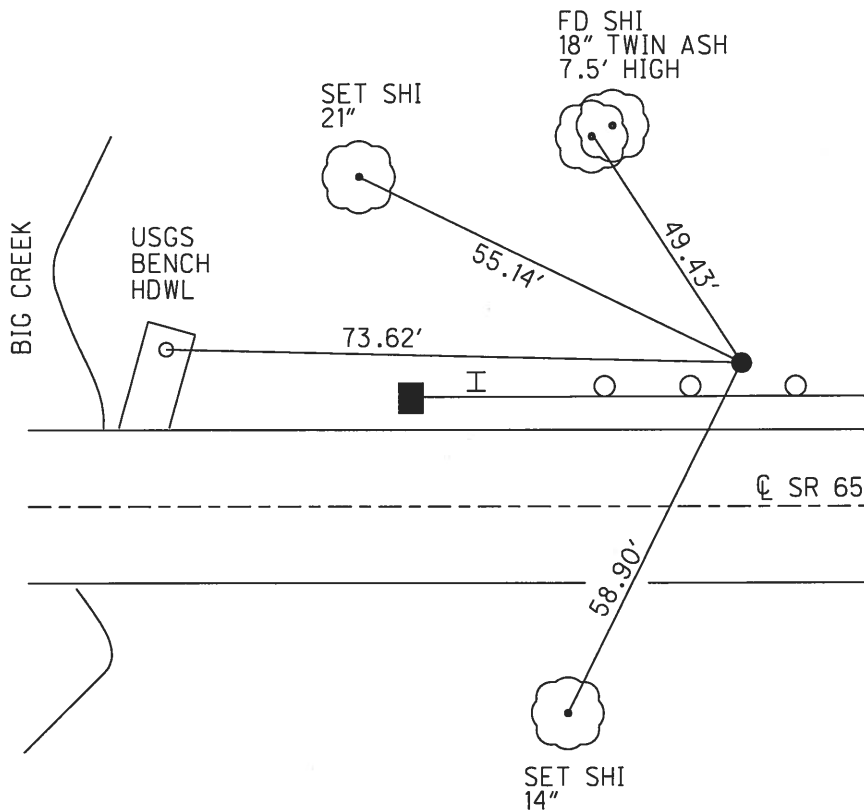
O.D.O.T. DISTRICT 2 SURVEY OFFICE (USE ONLY)

PERSONNEL _____ REFERENCE NO. 37 SHEET 11 OF 24
 NOTES LEU DATE 2-26-16 ROUTE SR 65
 H.C. LEU WEATHER CLOUDY COUNTY HENRY
 R.C. HOMAN TEMP. 33° TOWNSHIP DAMACUS
 _____ SECTION 11
 _____ T 5 N R 8 E

TYPE MONUMENT NAIL
 ON SURFACE - ~~BELOW~~ ON _____
 LEFT - ☉ PAV'T - ~~RIGHT~~ 16.4'
 5.7' LT OF LT EDGE PAVEMENT
 S.L.M. 966+75.65



Grid: Northing: 640221.872 Easting: 1579491.913



RECORD: P.I.
 DATA FROM 1924 PLAN
 STA. 64+86.3
 $\Delta = 27^\circ 18'$
 $D = 17^\circ 24' 00''$
 $T = 80'$
 $R = 329.42'$
 $L = 156.96'$
 $E = 9.50'$
 FD 1" IPIN
 SET P.K. NAIL
 IN CONC. BASE
 OF I-BEAM POST
 1991
 FD IPIN
 4/14/03, MB
 SET IPIN
 5/19/03, MC
 FD NAIL
 REF37
 2/16/16, DCH

O.D.O.T. DISTRICT 2 SURVEY OFFICE

PERSONNEL

REFERENCE NO. 37

SHEET 15 OF 26

NOTES BARNHISEL - HC

H.C. _____

DATE 04/14/03

ROUTE 65

R.C. Glass

WEATHER SUNNY

COUNTY HENRY

Ryall

TEMP. +56°

TOWNSHIP DAMACUS

SECTION 11

T 5 N R 8 E

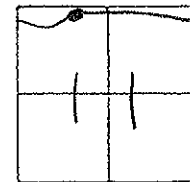
TYPE MONUMENT I. Rod

ON SURFACE - ~~BELOW~~ yes

LEFT - <math>E</math> PAV'T. - RIGHT 16.4'

5.7' LT ~~TO~~ OF LT EDGE PAVEMENT

S.L.M. 966+14



RECORD: DATA 1924 PLAN

PI: Sta = 64+86.3

$\Delta = 27^\circ 18'$

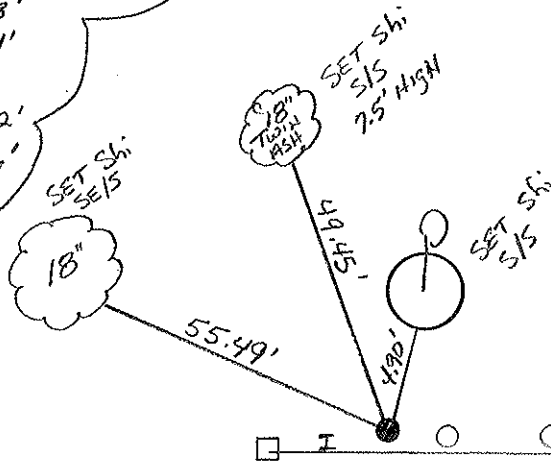
$D = 17^\circ 24'$

$T = 80'$

$R = 329.42'$

$L = 156.96'$

$E = 9.50'$



* NOTE: 1" I-ROD WAS DESTROYED IN G. RAIL PROJECT, UNKNOWN PERSON. RESET PK IN CONC. BASE OF I-BEAM POST 1991

** NOTE: PK WAS DESTROYED IN G. RAIL UPGRADE, RESET I. ROD. 05/19/03 MC

E PAV'T

SR #65

O.D.O.T. DISTRICT 2 SURVEY OFFICE

PERSONNEL

REFERENCE NO. 37

SHEET OF

NOTES BARNHISEL

H.C. BARBOUR

R.C. Geyman

Ripple

DATE 9-20-91

WEATHER CLEAR

TEMP. +56°

ROUTE 65

COUNTY HENRY

TOWNSHIP DAMASCUS

SECTION 11

T. 5 N. R. 8 E.

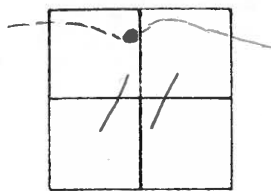
TYPE MONUMENT P.K. NAIL

ON SURFACE - ~~BELOW~~ IN CONC. BASE OF G. RAIL POST

LEFT- & PAV'T. - RIGHT 16.4

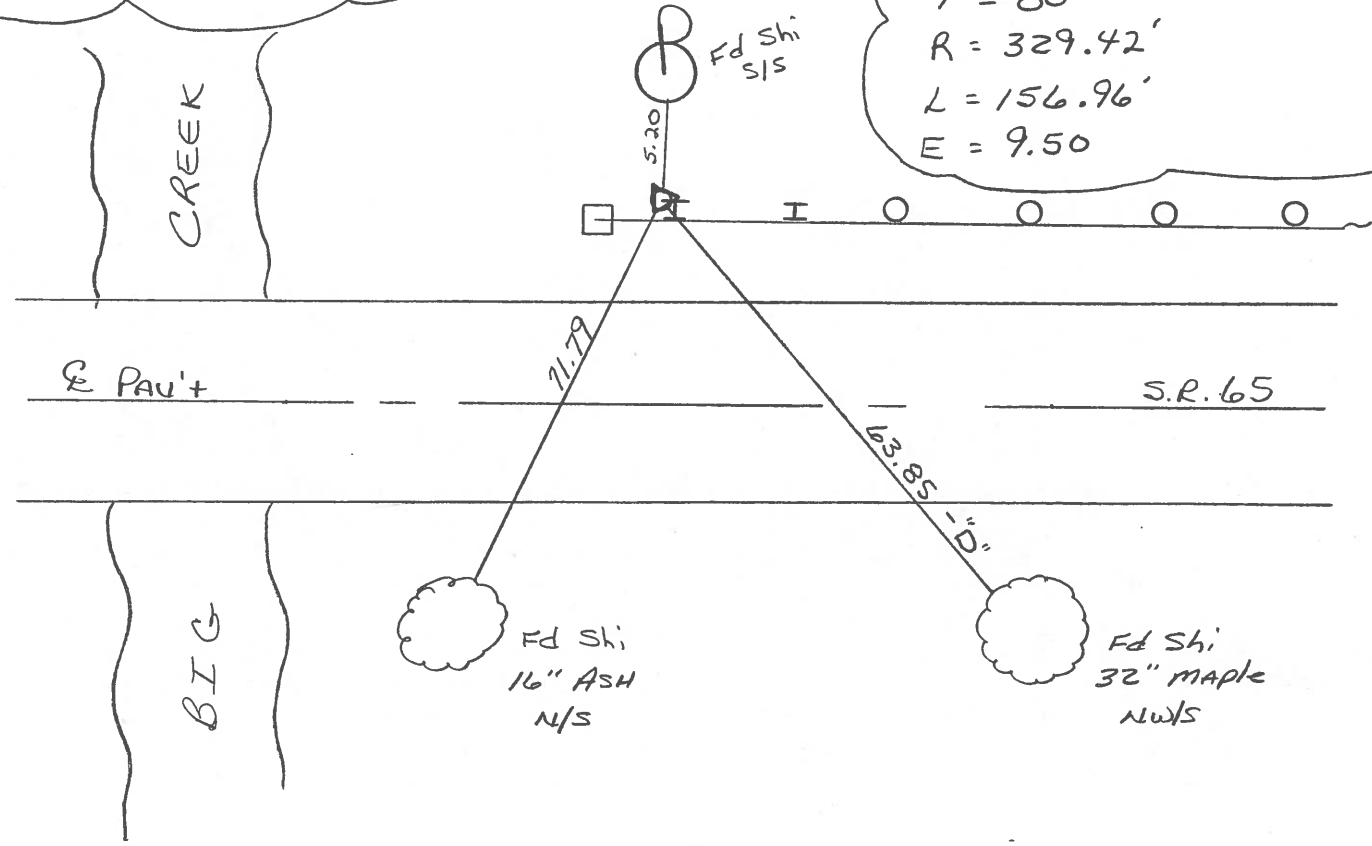
6.4 ^{LT OF} ~~TO~~ LT EDGE PAVEMENT

S.L.M. 967+25



NOTE: 1" I-Rod was destroyed with the NEW G. RAIL Project. Someone else RESET a P.K. NAIL in the CONC. BASE OF AN I-BEAM POST FOR the G. RAIL.

RECORD: P.I.
 CURVE DATA 1924 PLAN
 STA: 64+86.3
 $\Delta = 27^\circ - 18'$
 $D = 17^\circ - 24'$
 $T = 80'$
 $R = 329.42'$
 $L = 156.96'$
 $E = 9.50$



County HENRY S.R. 65

Date 7-19-82

Township DAMASCUS

Weather Humid

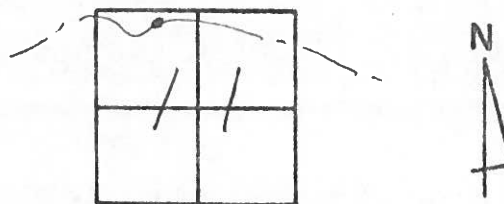
Section 11

Temp. +80°

T5N, R8E

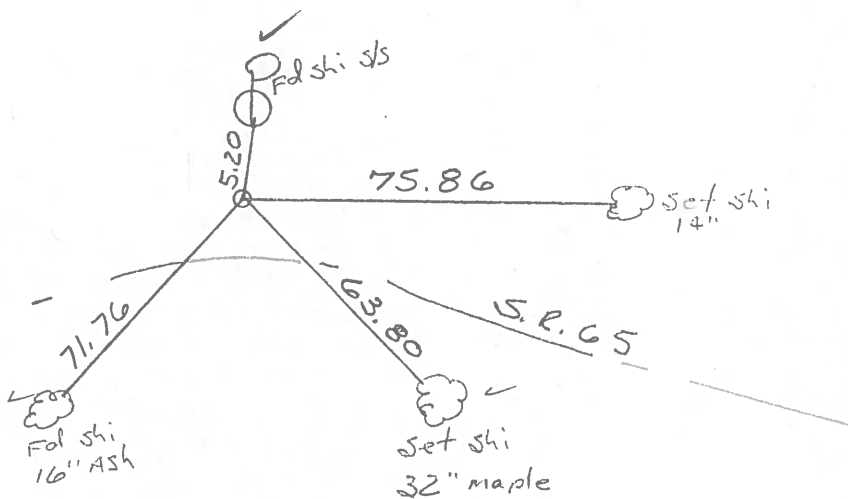
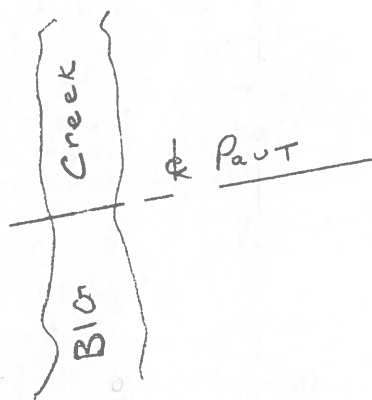
Personnel HOFFman
Householder
hoehrke

37



Fcl 1" Iron Rod @ Surface
 16.4' N of & Paut
 6.4' N. of N.E.P.

SLM 966+73
 2-2-84 SWK

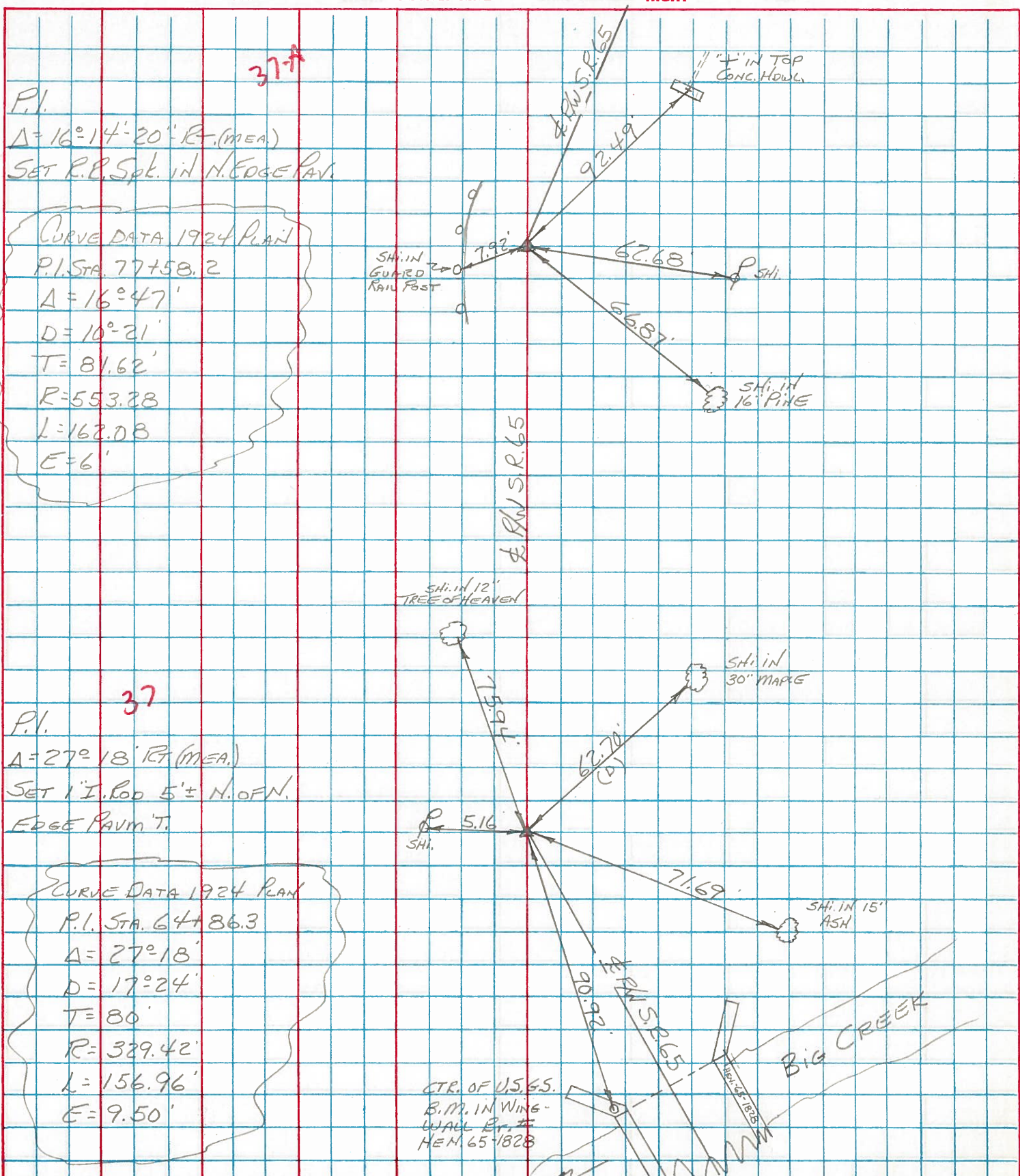


CURVE DATA 1924 plan
 P.I. sta 64+86.3
 $\Delta = 27^{\circ}-18'$
 $D = 17^{\circ}-24'$
 $T = 80'$
 $R = 329.42$
 $L = 156.96$
 $E = 9.50$

PERSONNEL	TITLE	PERSONNEL	TITLE
BURNSIDE			
SMITH			
BOWERS			
MEAD			

COUNTY HENRY DATE 3-6-74
 S. R. 65 WEATHER CLOUDY
 SEC. _____ TEMP. +44°

DESCRIPTION ± PAV CONTROL TIES JOB NO. _____



P.I.
 $\Delta = 16^\circ 14' 20''$ R. (MEA.)
 SET R.B. Spt. in N. EDGE PAV.

CURVE DATA 1924 PLAN
 P.I. STA. 77+58.2
 $\Delta = 16^\circ 47'$
 $D = 10^\circ 21'$
 $T = 81.62'$
 $R = 553.28$
 $L = 162.08$
 $E = 6'$

P.I.
 $\Delta = 27^\circ 18'$ RT (MEA.)
 SET 1" I. ROD 5' ± N. OF N.
 EDGE PAV. T.

CURVE DATA 1924 PLAN
 P.I. STA. 64+86.3
 $\Delta = 27^\circ 18'$
 $D = 17^\circ 24'$
 $T = 80'$
 $R = 329.42'$
 $L = 156.96'$
 $E = 9.50'$

CTR. OF U.S. 65.
 B.M. IN WING-WALL RT. #
 NEM. 65-1828

BIG CREEK