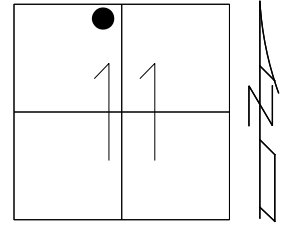


O.D.O.T. DISTRICT 2 SURVEY OFFICE (USE ONLY)

PERSONNEL _____ REFERENCE NO. 37 A SHEET 15 OF 27
 NOTES MILLER DATE 5/2/23 ROUTE SR 65
 H.C. MILLER WEATHER MIST COUNTY HENRY
 R.C. RHOADES TEMP. 45° TOWNSHIP DAMASCUS
 DWG BY RHOADES PID 119500 SECTION 11
 T 5 N R 8 E

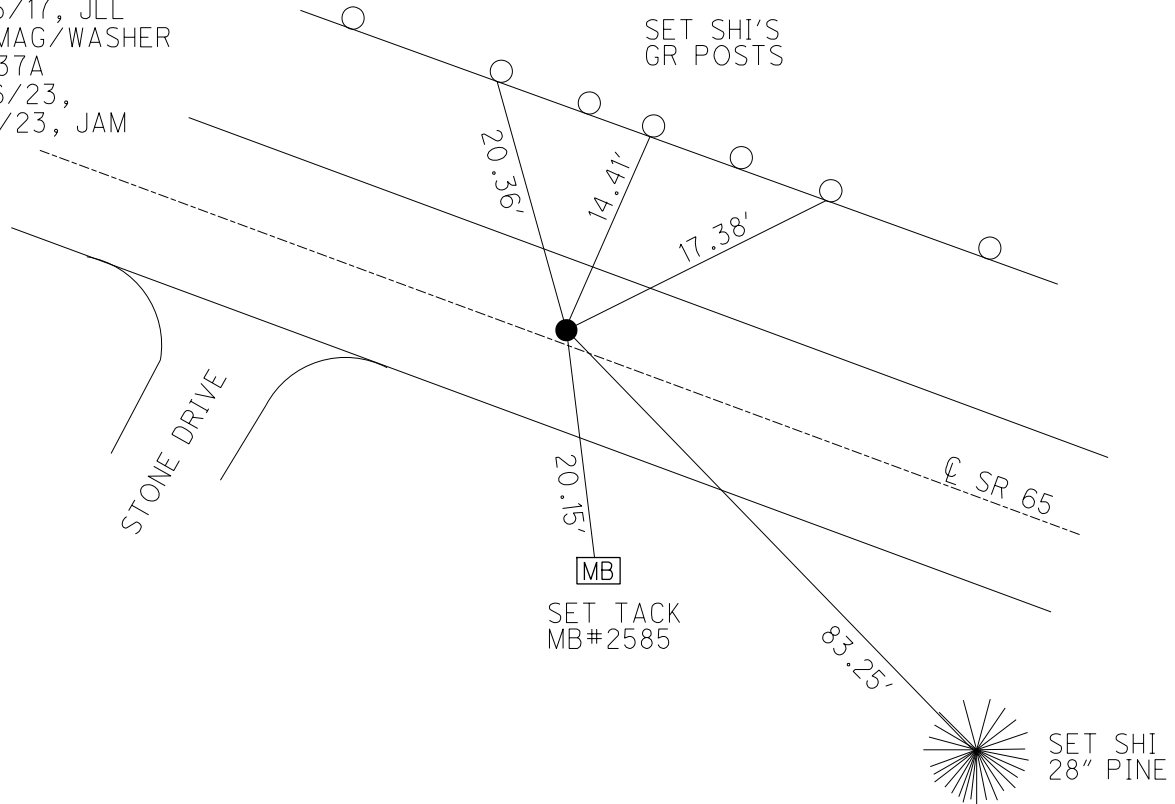
TYPE MONUMENT MAG/WASHER
 ON SURFACE - ~~BELOW~~ ON _____
 OFFSET \odot PAVEMENT 0.2' LT : ~~RT~~
9.5' TO LT EDGE PAVEMENT
 STATION: 977+54.10



HORIZ.DATUM: NAD83 2011 GEOID: NAVD88 2018
 GRID: NORTHING: 640280.209 EASTING: 1580571.828

RECORD:
 ORIGIN UNKNOWN
 FD P.K./WASHER
 4/14/03, MC
 SET MAG/WASHER
 5/19/03, MC
 FD MAG/WASHER
 REFA37
 2/16/16, DCH
 SET MAG/WASHER
 10/5/17, JLL
 FD MAG/WASHER
 REF37A
 3/16/23,
 5/2/23, JAM

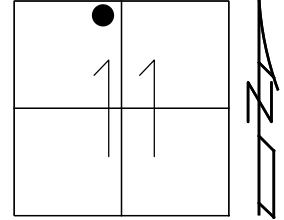
HEN LDP
 N: 497550.472
 E: 214950.142



O.D.O.T. DISTRICT 2 SURVEY OFFICE (USE ONLY)

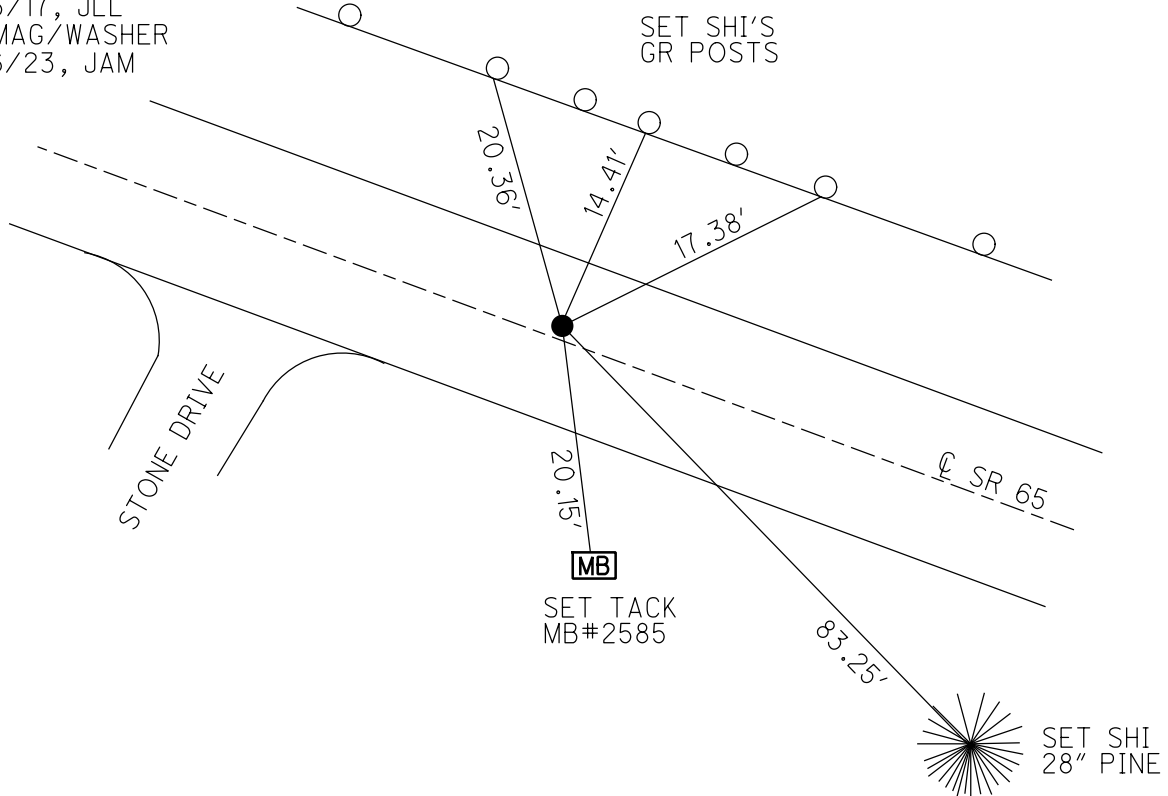
PERSONNEL _____ REFERENCE NO. 37 A SHEET 12 OF 24
 NOTES RHOADES DATE 4/27/17 ROUTE SR 65
 H.C. LEU WEATHER CLOUDY COUNTY HENRY
 R.C. HELDMAN TEMP. 67° TOWNSHIP DAMASCUS
 DWG BY RHOADES PID R/W SECTION 11
 T 5 N R 8 E

TYPE MONUMENT MAG/WASHER
 ON SURFACE - ~~BELOW~~ ON _____
 OFFSET \odot PAVEMENT 0.2' LT : ~~RT~~
9.5' TO LT EDGE PAVEMENT
 STATION: 977+54.10



HORIZ.DATUM: NAD83 2011 GEOID: NAVD88 2018
 GRID: NORTHING: 640280.209 EASTING: 1580571.828

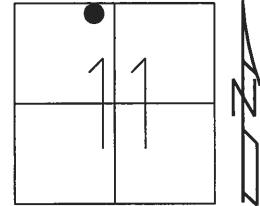
RECORD:
 ORIGIN UNKNOWN
 FD P.K./WASHER
 4/14/03, MC
 SET MAG/WASHER
 5/19/03, MC
 FD MAG/WASHER
 REFA37
 2/16/16, DCH
 SET MAG/WASHER
 10/5/17, JLL
 FD MAG/WASHER
 3/16/23, JAM



O.D.O.T. DISTRICT 2 SURVEY OFFICE (USE ONLY)

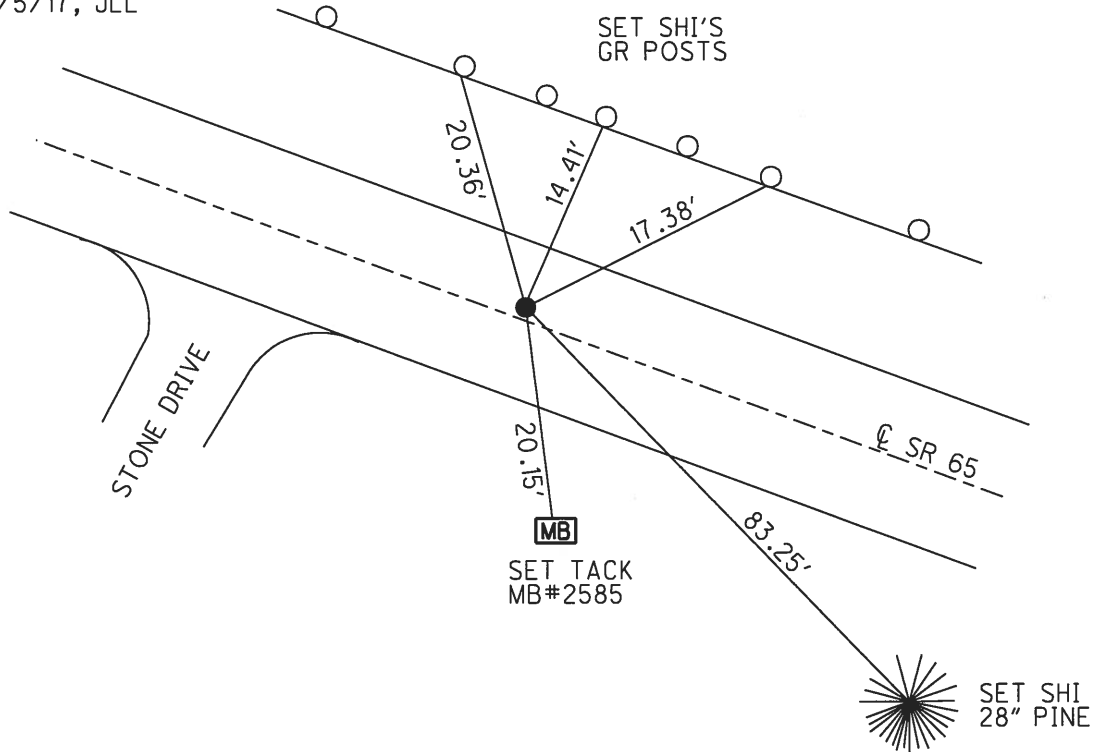
PERSONNEL _____ REFERENCE NO. 37 A SHEET 12 OF 24
 NOTES RHOADES DATE 4-27-17 ROUTE SR 65
 H.C. LEU WEATHER CLOUDY COUNTY HENRY
 R.C. HELDMAN TEMP. 67° TOWNSHIP DAMACUS
 _____ SECTION 11
 _____ T 5 N R 8 E

TYPE MONUMENT MAG/WASHER
 ON SURFACE - ~~BELOW~~ ON _____
 LEFT - ☉ PAV'T - ~~RIGHT~~ 0.2'
9.5' TO LT EDGE PAVEMENT
 S.L.M. 977+54.10



Grid: Northing: 640280.209 Easting: 1580571.828

RECORD:
 ORIGIN UNKNOWN
 FD P.K./WASHER
 4/14/03, MC
 SET MAG/WASHER
 5/19/03, MC
 FD MAG/WASHER
 REFA37
 2/16/16, DCH
 SET MAG/WASHER
 10/5/17, JLL



O.D.O.T. DISTRICT 2 SURVEY OFFICE

PERSONNEL _____

REFERENCE NO. 37-A

SHEET 16 OF 28

NOTES BARNHISEL - HC

H.C. _____

DATE 04/14/03

ROUTE 65

R.C. GLASS

WEATHER SUNNY

COUNTY HENRY

RYALL

TEMP. +56°

TOWNSHIP DAMACUS

SECTION 11

T. 5 N. R 8 E

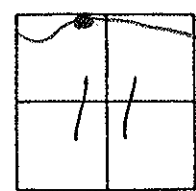
TYPE MONUMENT PK & WASHER

ON SURFACE - ~~BELOW~~ YES

LEFT- & PAV'T. - RIGHT 0.8'

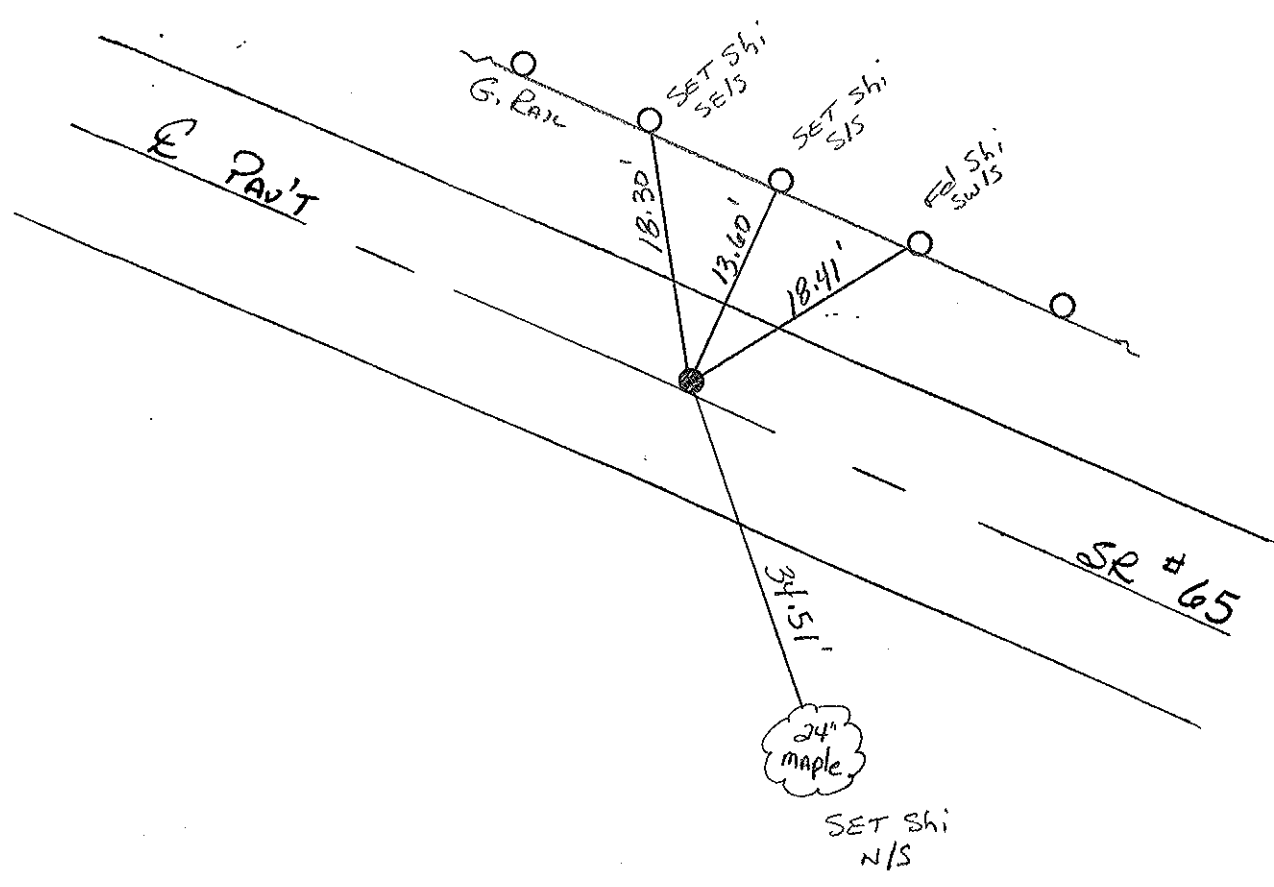
9.5' TO LT. EDGE PAVEMENT

S.L.M. 976+94



"ORIGIN UNKNOWN"

Reset mag nail & WASHER
05/19/03
MC



O.D.O.T. DISTRICT 2 SURVEY OFFICE

PERSONNEL _____

REFERENCE NO. _____

SHEET _____ OF _____

NOTES VAN DUSEN

H.C. BARNHISEL

DATE 9-20-91

ROUTE 65

R.C. Kusz

WEATHER _____

COUNTY HENRY

TEMP. +56° F

TOWNSHIP DAMASCUS

SECTION 11

T. 5 N R. 8 E

TYPE MONUMENT P.K./WASHER

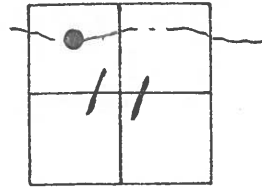
ON SURFACE - ~~BELOW~~ YES

LEFT- & PAV'T. - ~~RIGHT~~ 1.3

8.6 TO LT. EDGE PAVEMENT

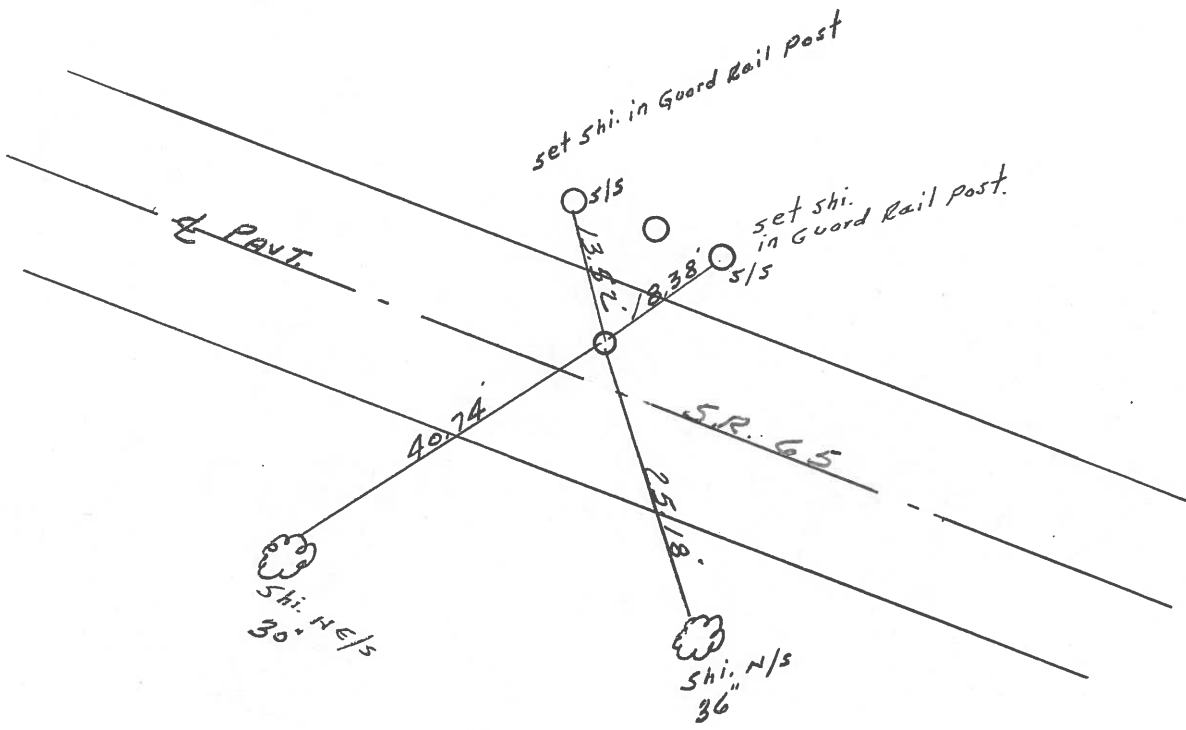
S.L.M. 978+05

37A



"ORIGIN UNKNOWN"

SET PK/WASHER
3-5-92
BVD



Q.D.O.T. DISTRICT 2 SURVEY OFFICE

SHEET _____ OF _____

County HENRY S.R. 65

Date 2-2-84

Township DAMASCUS

Weather CLEAR

Section 11

Temp. 35°

T5N, R8E

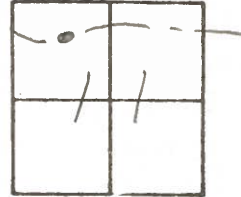
Personnel HOFFMAN

LOHRKE H.C.

HOUSEHOLDER R.C.

BARNHISEL

37A



Fd R.R. spk @ surf. ORIGIN UNKNOWN

SLM 977+48

1.3' Lt of & PAUT

7.8' TO Lt. EP.

10.5' TO Rt. EP.

SET PK/WASHER

9-17-84

S.W.H.

