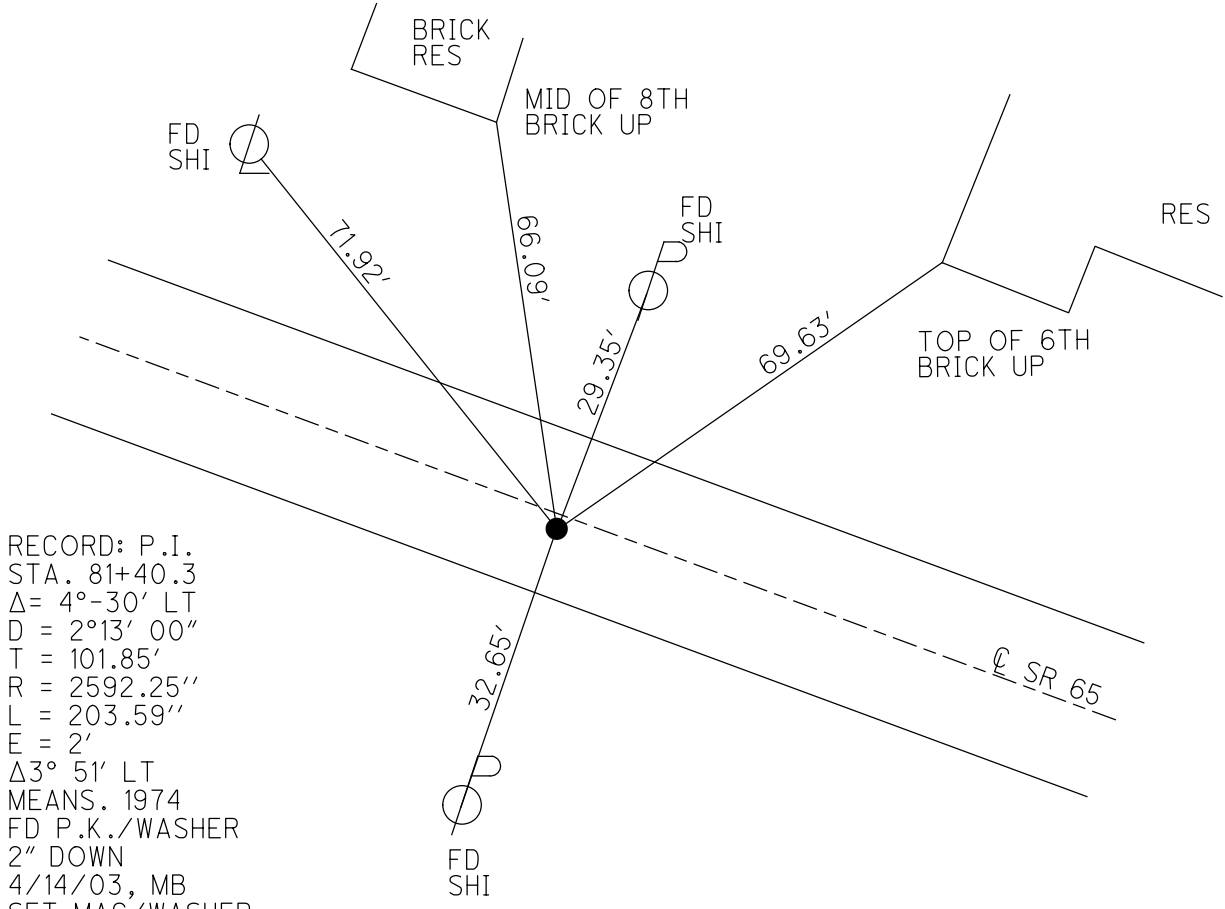
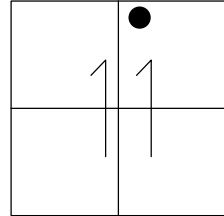


O.D.O.T. DISTRICT 2 SURVEY OFFICE (USE ONLY)

PERSONNEL \_\_\_\_\_ REFERENCE NO. 38 SHEET 16 OF 24  
 NOTES RHOADES DATE 4-28-17 ROUTE SR 65  
 H.C. LEU WEATHER FAIR COUNTY HENRY  
 R.C. HELDMAN TEMP. 46° TOWNSHIP DAMASCUS  
 \_\_\_\_\_ SECTION 11  
 \_\_\_\_\_ T 5 N R 8 E

TYPE MONUMENT MAG/WASHER  
 ON SURFACE - ~~BELOW~~ ON \_\_\_\_\_  
~~LEFT - C~~ PAV'T - RIGHT 1.5'  
9.0' TO RT EDGE PAVEMENT  
 S.L.M. 983+20.96

Grid: Northing: 604200.162 Easting: 1581129.169



RECORD: P.I.  
 STA. 81+40.3  
 $\Delta = 4^\circ - 30' \text{ LT}$   
 $D = 2^\circ 13' 00''$   
 $T = 101.85'$   
 $R = 2592.25''$   
 $L = 203.59''$   
 $E = 2'$   
 $\Delta 3^\circ 51' \text{ LT}$   
 MEANS. 1974  
 FD P.K./WASHER  
 2" DOWN  
 4/14/03, MB  
 SET MAG/WASHER  
 5/19/03, MC  
 FD MAG/WASHER  
 REF38  
 2/16/16, DCH  
 SET MAG/WASHER  
 10-5-17, JLL

# O.D.O.T. DISTRICT 2 SURVEY OFFICE

PERSONNEL

REFERENCE NO. 38

SHEET 19 OF 26

NOTES BARNHISEL - H.C.

H.C. \_\_\_\_\_

R.C. GLASS

RYALL

DATE 4-14-03

WEATHER CLEAR

TEMP. +65°

ROUTE 65

COUNTY HENRY

TOWNSHIP DAMACUS

SECTION 11

T5NR8E

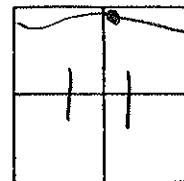
TYPE MONUMENT P.K. & WASHER

ON SURFACE - BELOW 2" DOWN

LEFT- & PAV'T. - RIGHT 0.7' RT.

9.0' TO RT. EDGE PAVEMENT

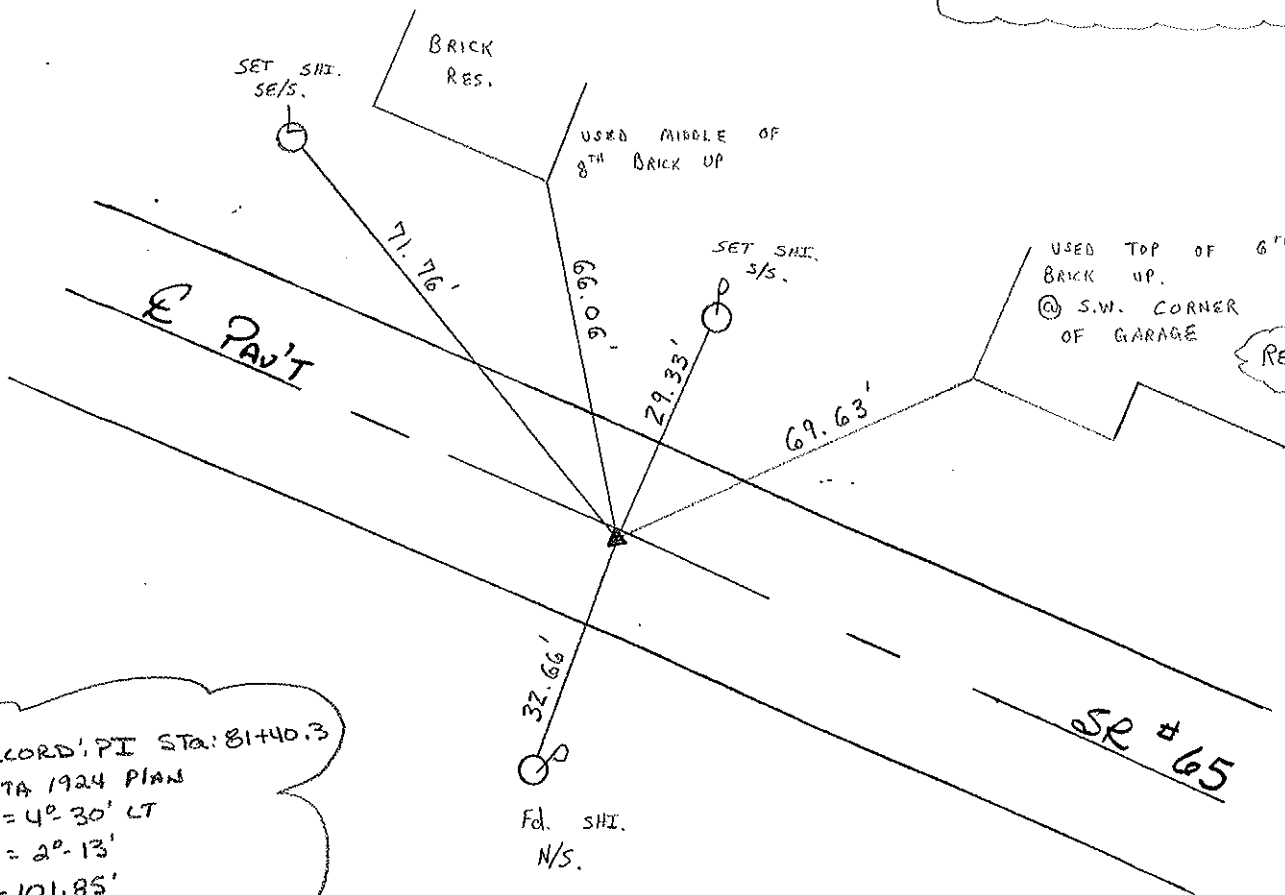
S.L.M. 982 + 58



RESET MAG & WASHER

5-19-03

M.C.



RECORD PI STA: 81+40.3

DATA 1924 PLAN

A = 4° 30' LT

D = 2° 13'

T = 101.85'

R = 2592.25'

L = 203.59'

E = 2'

(PI Δ = 3° 51' LT meas. 1974)

# O.D.O.T. DISTRICT 2 SURVEY OFFICE

PERSONNEL

REFERENCE NO. 38

SHEET      OF     

NOTES BARNHISEL

H.C. BARGOUR

R.C. Geyman

Ripple

DATE 9-20-91

WEATHER CLEAR

TEMP. +56°

ROUTE 65

COUNTY HENRY

TOWNSHIP DAMASCUS

SECTION 11

T 5 N R 8 E

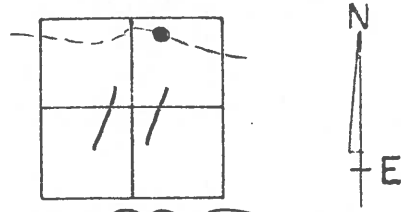
TYPE MONUMENT P.K. & WASHER

ON SURFACE - BELOW yes

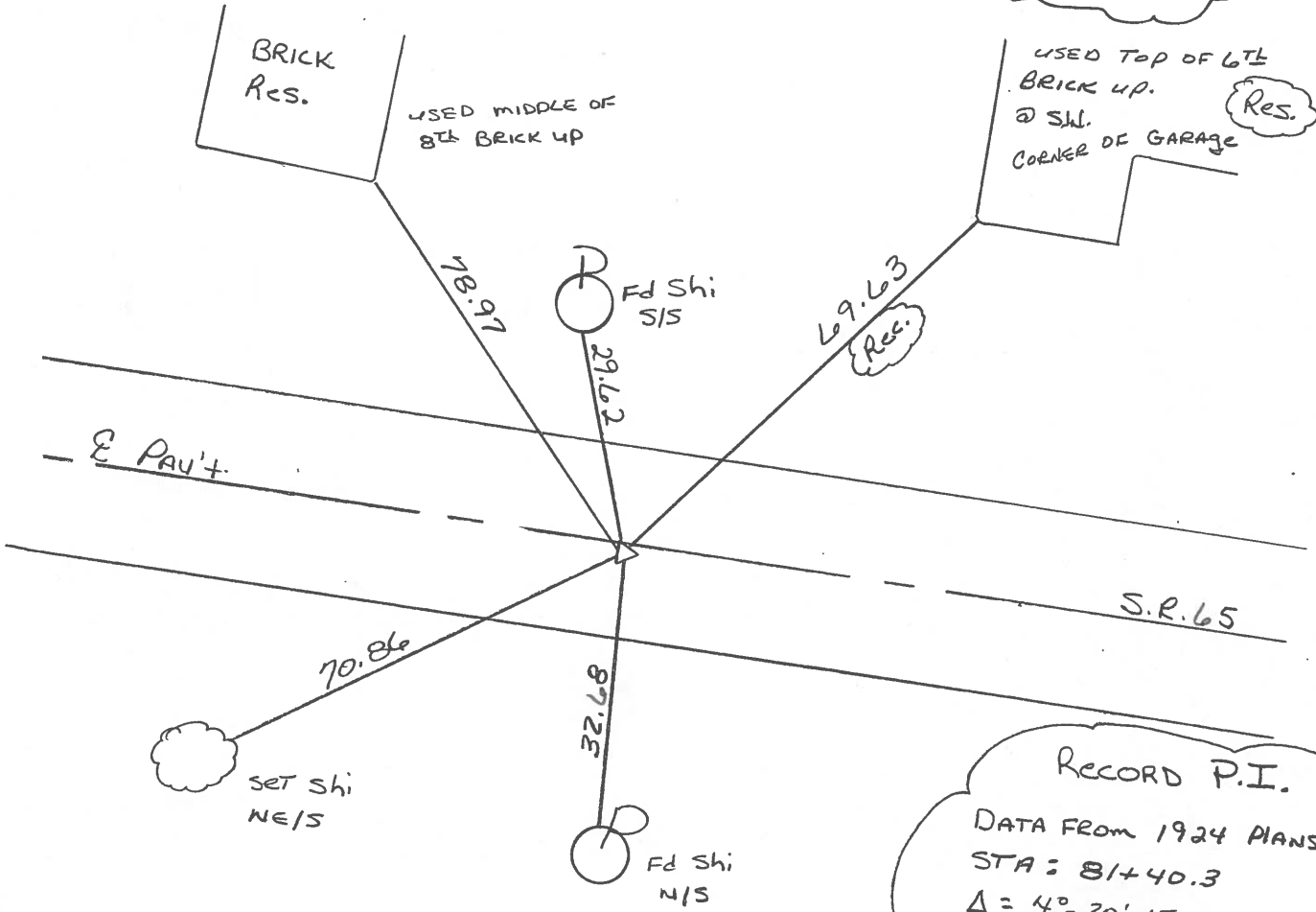
LEFT - & PAV'T. - RIGHT 1.0

9.0 TO RT EDGE PAVEMENT

S.L.M. 983+69



PK & WASHER  
BELOW SURFACE  
3-24-92



RECORD P.I.

DATA FROM 1924 PLANS  
 STA = 81+40.3  
 $\Delta = 4^{\circ}-30'$  LT.  
 $D = 2^{\circ}-13'$   
 $T = 101.85'$   
 $R = 2592.25'$   
 $L = 203.59'$   
 $E = 2'$   
 P.I.  $\Delta = 3^{\circ}-51'$  LT  
 (M.P.S.) 1974

OD.O.T. DISTRICT 2 SURVEY OFFICE

SHEET \_\_\_\_\_ OF \_\_\_\_\_

County HENRY S.R. 65

Date 2-2-84

Township DAMASCUS

Weather Clear

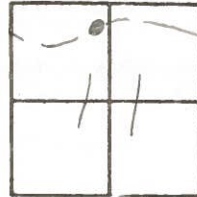
Section 11

Temp. 35°

TSN, R&E

Personnel HOFFMAN  
LOGHRKE H.C.  
HOUSEHOLDER R.C.  
BARWISSEL

#38

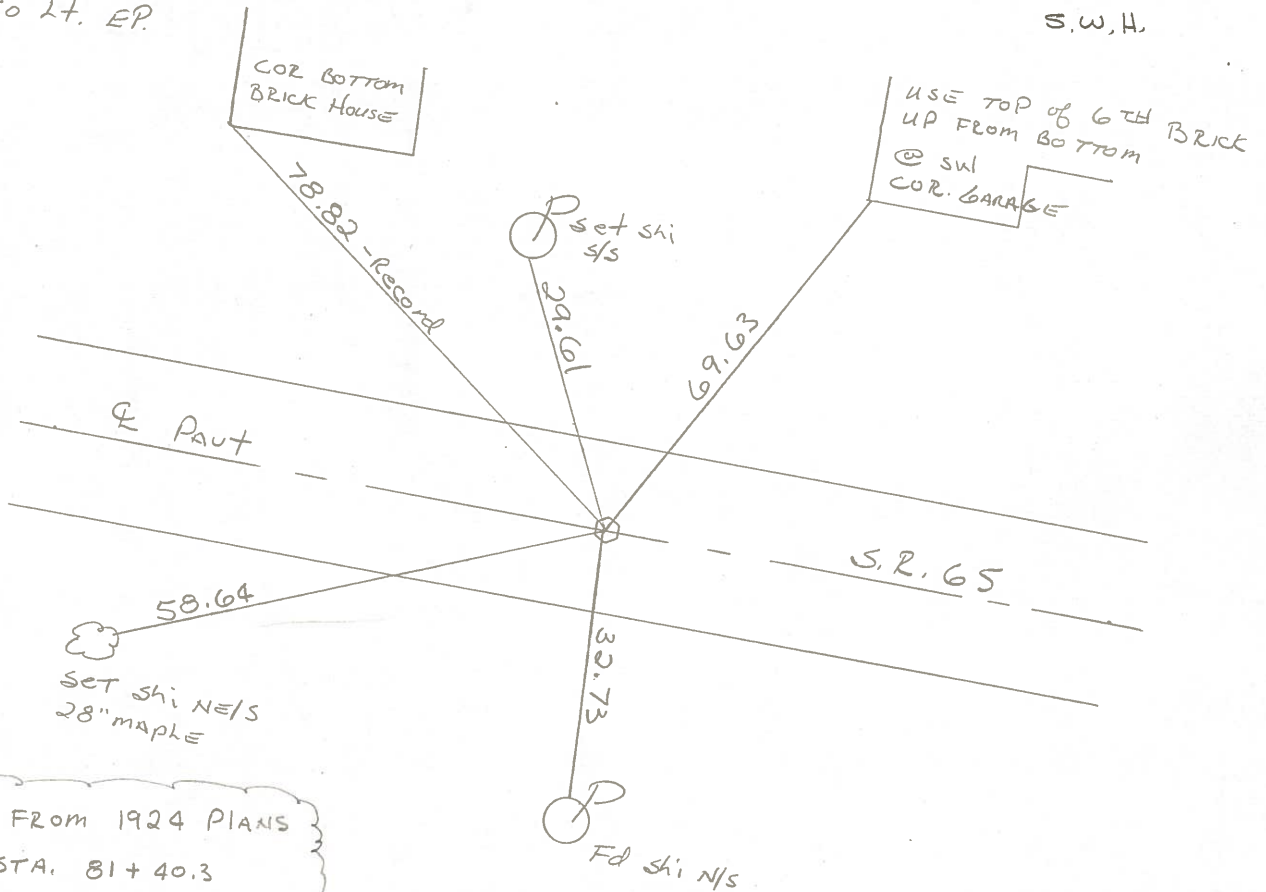


Fd R.R. spk 1 1/2" Below Surface

S.L.M. 983 + 14

- 0.3' RT & PAUT
- 9.2' TO RT. EP.
- 9.9' TO Lt. EP.

SET PK/WASHER  
 9-17-84  
 S.W.H.



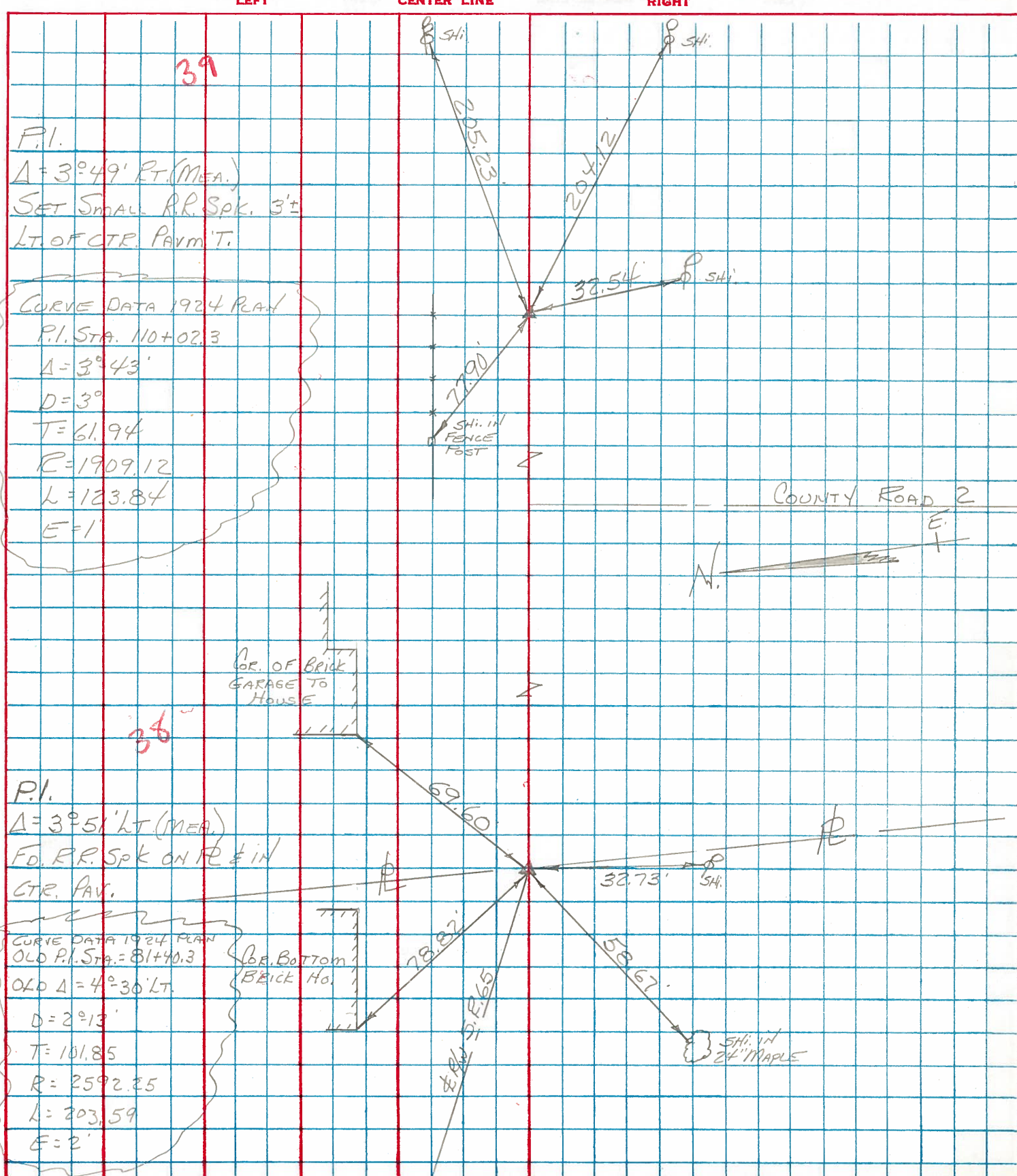
DATA FROM 1924 PLANS  
 P.I. STA. 81+40.3  
 $\Delta = 4^\circ - 30' \text{ LT}$   
 $D = 2^\circ - 13'$   
 $T = 101.85$   
 $R = 2592.25$   
 $L = 203.59$   
 $E = 2'$

P.I.  
 $\Delta = 3^\circ - 51' \text{ LT (MEAS. 1974)}$

PERSONNEL	TITLE	PERSONNEL	TITLE
BURNSIDE			
SMITH			
BOWERS			
MEAD			

COUNTY HENRY DATE 3-6-74  
 S. R. 65 WEATHER Cloudy  
 SEC. \_\_\_\_\_ TEMP. +50°

DESCRIPTION ± RW CONTROL TIES JOB NO. \_\_\_\_\_



A	B

COUNTY: HENRY

TOWNSHIP: DAMASCUS

T- 5 -N R- 8 -E

SECTION: 11

7/31/80 R.W., C.S.

A - Stone lies 18" below grade. Located stone with probe. Unable to uncover stone because of location.

17.4' S. to near face iron anchor post.

6.8' S. to N.E. corner concrete retaining wall

19.0' N.W. to near face maple tree

9/28/92 R.W, S.K.

Found maple tree and retaining wall. A metal shed sits near location of stone. Did not uncover stone.

7/31/80 R.W., C.S.

B - Found stone at grade level

7.2' N to center power pole

49.0 N.N.E. to S.W. corner brick veneer house

51.2' S. to N & S N/S power pole

9/28/92 R.W, S.K.

Stone protrudes .3'± from ground.

7.62' N. to nail/shiner e/s power pole. (P)

22.05' S. to Pk nail/shiner on centerline SR 65.

54.75' S. to nail/shiner n/s power pole.

106.30' E. to duplex s/s telephone pole.