

O.D.O.T. DISTRICT 2 SURVEY OFFICE (USE ONLY)

PERSONNEL

REFERENCE NO. 2

SHEET 2 OF 9

NOTES HOMAN DATE 6-1-12
 H.C. ROUSOS WEATHER CLOUDY
 R.C. COUCHER TEMP. 60°F
HARBAUGH

ROUTE SR 66
 COUNTY HENRY
 TOWNSHIP RIDGEVILLE
 SECTION 29

DWG BY MAHLER PID 86886

T 6 N R 5 E

TYPE MONUMENT SM.R.R.SPIKE

~~ON SURFACE~~ - BELOW 1.5"

OFFSET CL PAVEMENT 0.9' LT : ~~RT~~

12.6' TO RT EDGE PAVEMENT

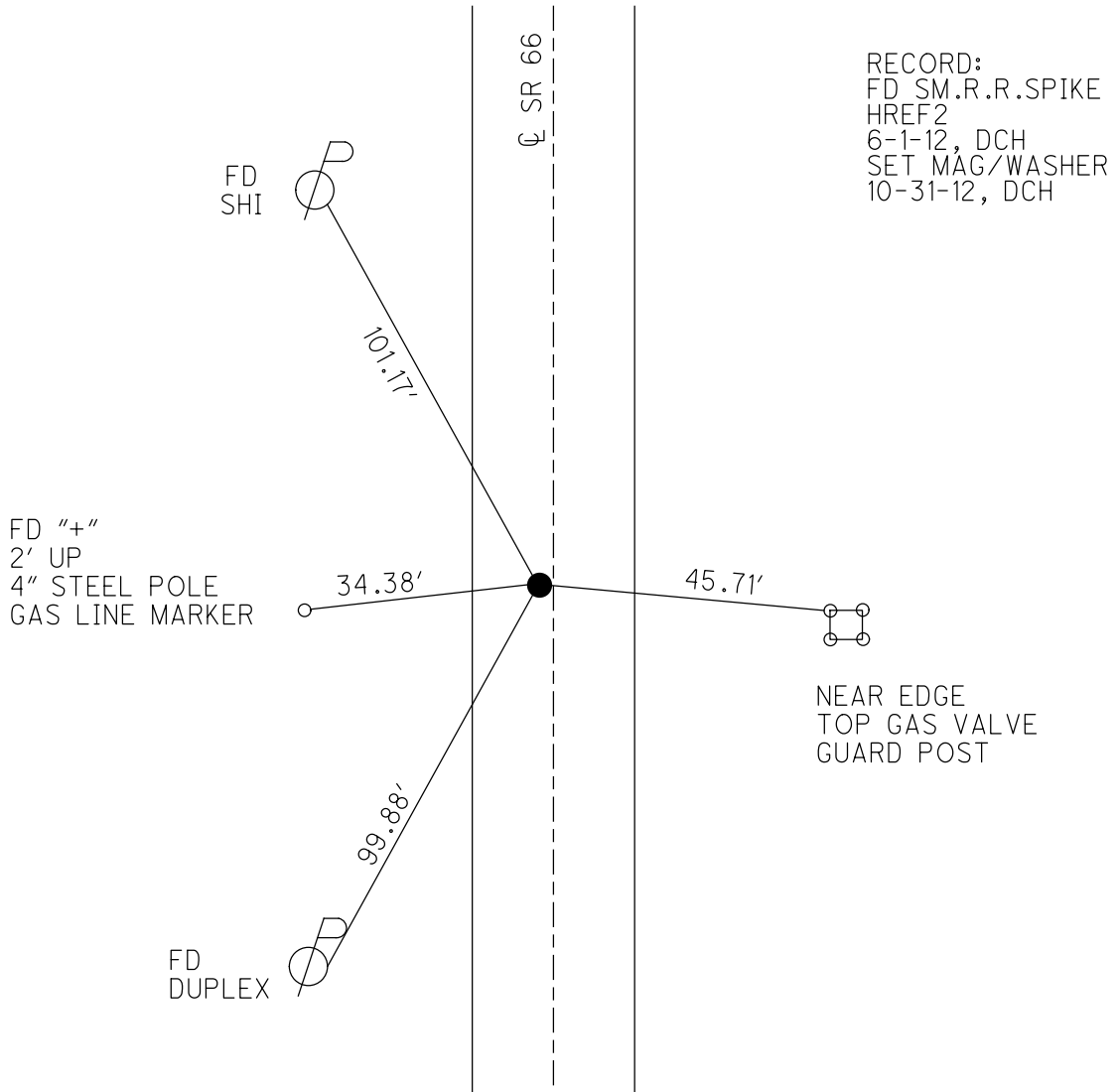
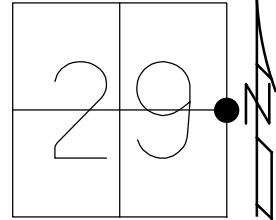
STATION: 125+83.40

HORZ.DATUM: NAD83 2009

GEOID: NAVD88 2009

GRID: NORTHING: 654625.800

EASTING: 1473520.174

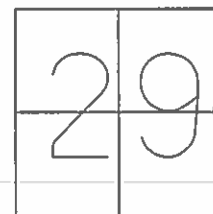


RECORD:
 FD SM.R.R.SPIKE
 HREF2
 6-1-12, DCH
 SET MAG/WASHER
 10-31-12, DCH

O.D.O.T. DISTRICT 2 SURVEY OFFICE (USE ONLY)

PERSONNEL	REFERENCE NO.	<u>2</u>	SHEET	<u>2</u>	OF	<u>9</u>
NOTES	HOMAN	DATE	<u>6-1-12</u>	ROUTE	<u>SR 66</u>	
H.C.	<u>ROUSOS</u>	WEATHER	<u>CLOUDY</u>	COUNTY	<u>HENRY</u>	
R.C.	<u>COUCHER</u>	TEMP.	<u>60°F</u>	TOWNSHIP	<u>RIDGEVILLE</u>	
	<u>RHOADES</u>			SECTION	<u>29</u>	
				T	<u>6</u>	N
				R	<u>5</u>	E

TYPE MONUMENT SM RSPK
~~ON SURFACE~~ - BELOW 1.5"
 LEFT - 0.9' PAV'T - ~~RIGHT~~
12.6' TO RT EDGE PAVEMENT
 S.L.M. 125+83.4



GRID: NORTHING: 654625.800 EASTING: 1473520.174

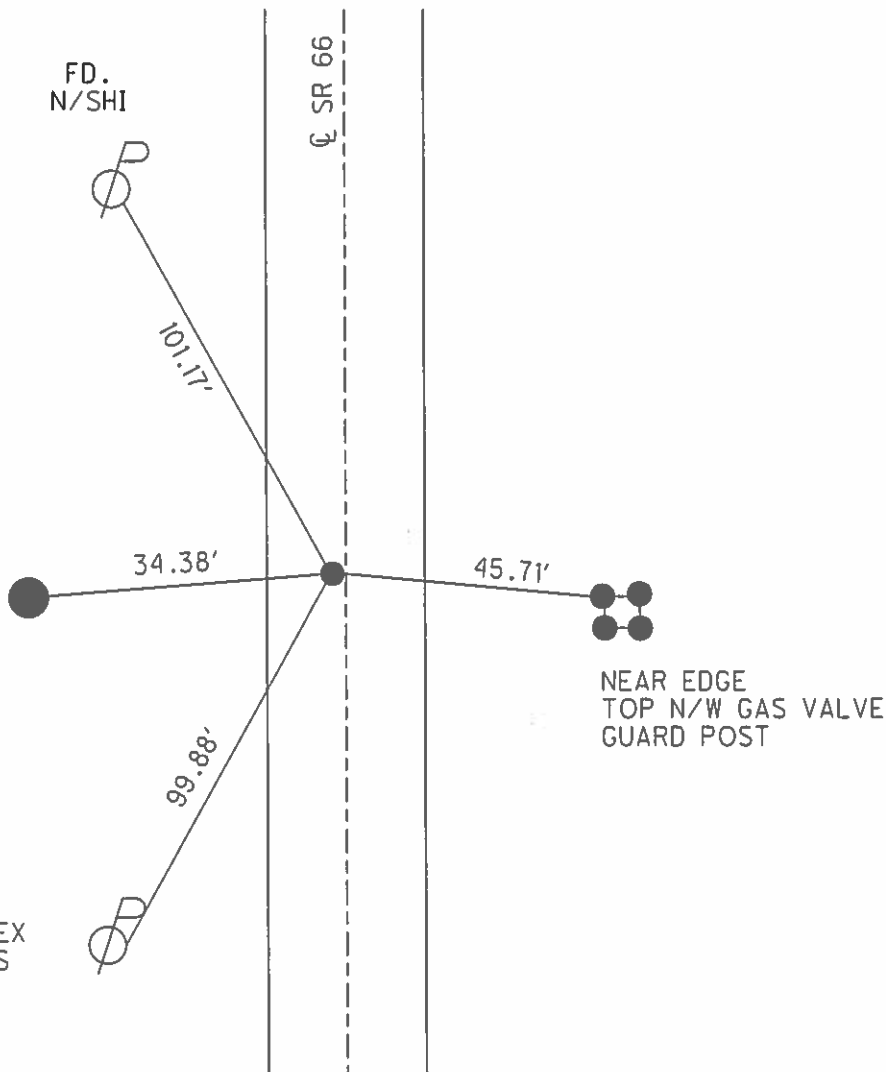
RECORD:

FD. SM RSPK
6-1-2012

SET MAG NAIL
10-31-2012
DCH

FD. "+" 2' UP
ON 4" STEEL POLE
GAS LINE MARKER

FD.
DUPLEX
ESE/S



O.D.O.T. DISTRICT 2 SURVEY OFFICE (USE ONLY)

PERSONNEL _____ REFERENCE NO. 2 SHEET 2 OF 9

NOTES HOMAN DATE 6-1-12 ROUTE SR 66
 H.C. ROUSOS WEATHER CLOUDY COUNTY HENRY
 R.C. COUCHER TEMP. 60°F TOWNSHIP RIDGEVILLE
RHOADES SECTION 29
T 6 N R 5 E

TYPE MONUMENT _____ SM RSPK _____

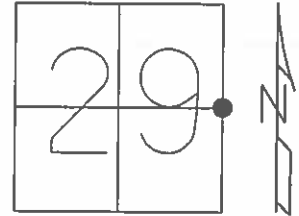
~~ON SURFACE~~ - BELOW 1.5"

LEFT - ☉ PAV'T - ~~RIGHT~~ 0.9'

12.6' TO RT EDGE PAVEMENT

S.L.M. 125+88.89

GRID: NORTHING: 654625.800 EASTING: 1473520.174

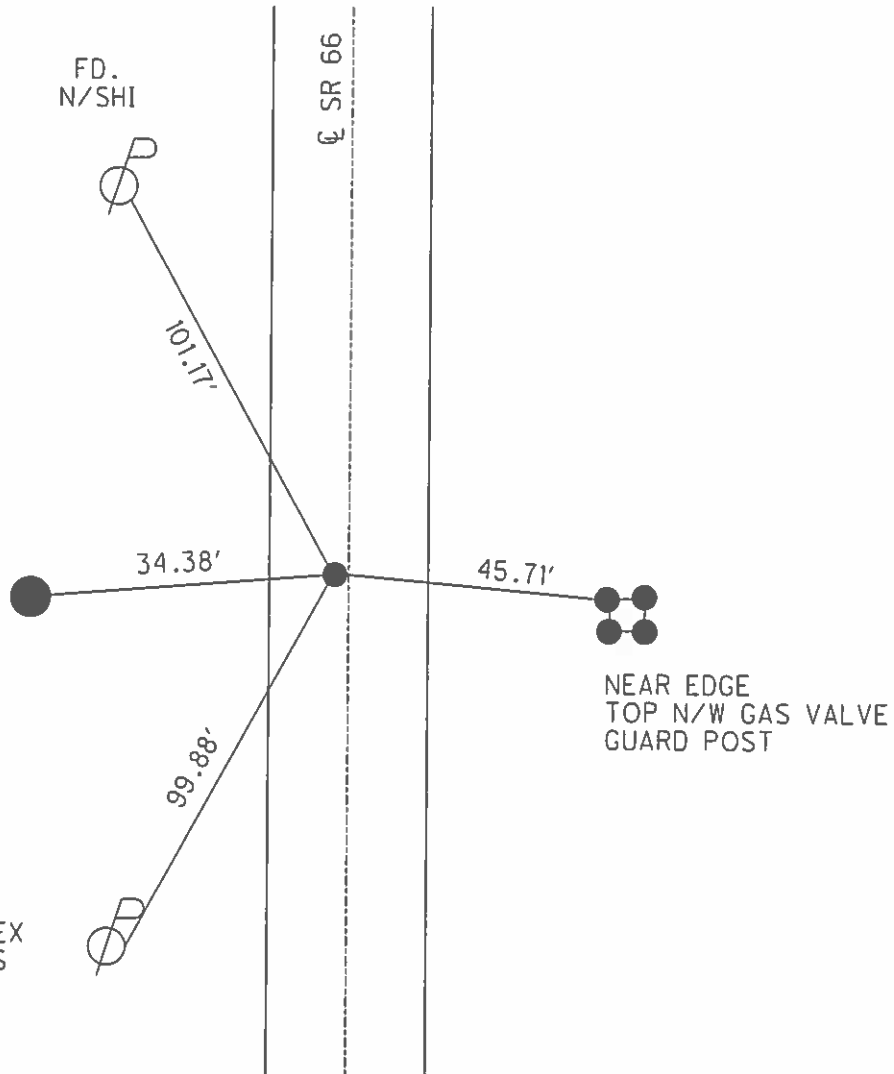


RECORD:

FD. SM RSPK
6-1-2012

SET MAG NAIL
10-31-2012
DCH

FD. "+" 2' UP
ON 4" STEEL POLE
GAS LINE MARKER



O.D.O.T. DISTRICT 2 SURVEY OFFICE

PERSONNEL _____

REFERENCE NO. 2

SHEET 2 OF 8

NOTES SLOVAK

H.C. ROUSOS

R.C. CANTERBURY

DATE 8-14-95

WEATHER SUNNY

TEMP. +90°F

ROUTE S.R. 66

COUNTY HENRY

TOWNSHIP RIDGEVILLE

SECTION 29

T. 6 N. R. 5 E.

OK 9-4-96

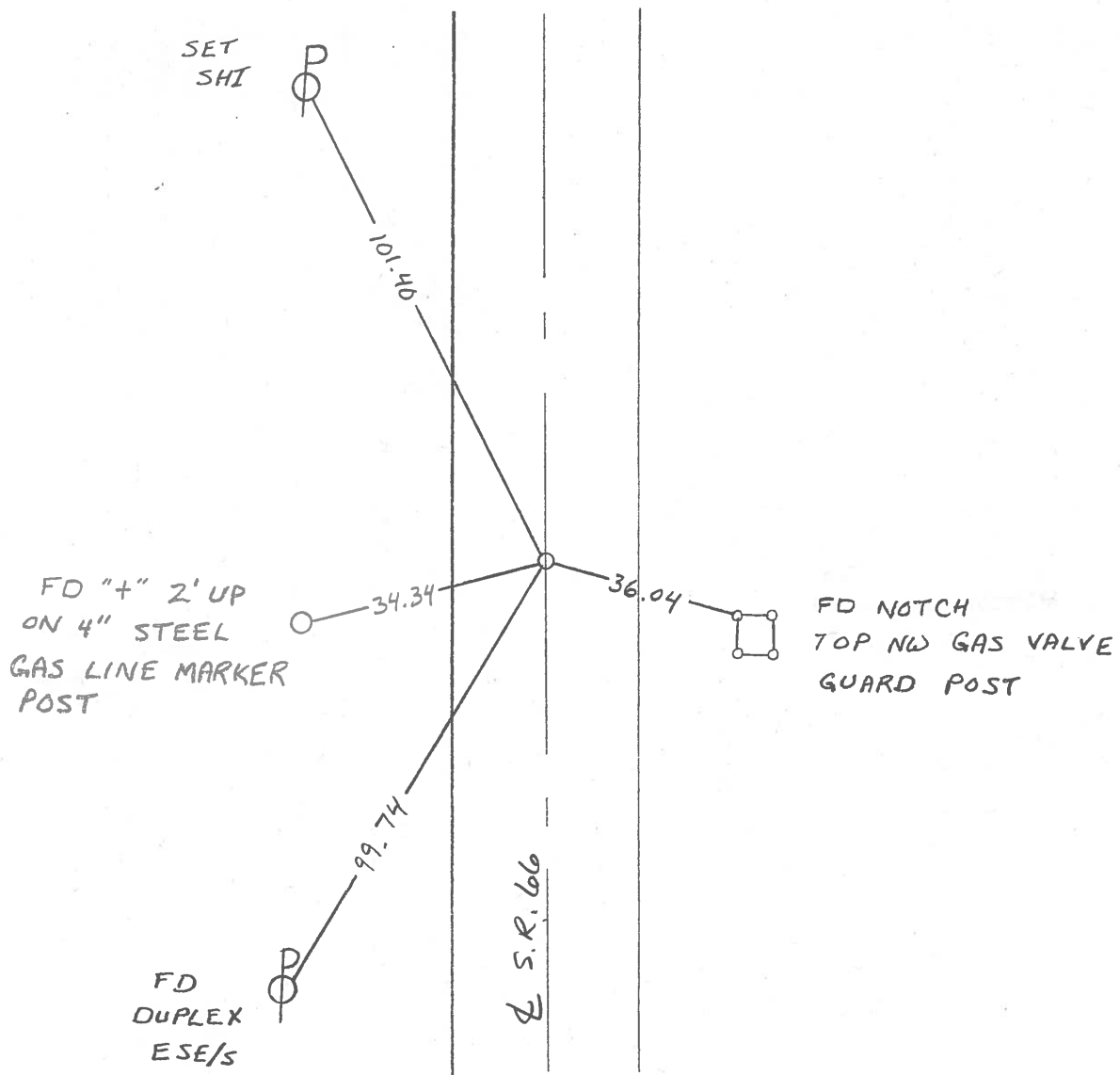
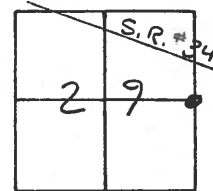
TYPE MONUMENT SM. R.R. SPIKE

ON SURFACE - BELOW 1 1/2" BELOW SURFACE

LEFT - ~~C~~ PAV'T. - RIGHT 0.9'

12.6 TO RT EDGE PAVEMENT

S.L.M. 178 + 19



O.D.O.T. DISTRICT 2 SURVEY OFFICE

PERSONNEL _____

REFERENCE NO. 2

SHEET 4 OF 5

NOTES 1. Stone

H.C. D. Curtis

DATE 2 Oct. 89

ROUTE SR#66

R.C. J. Householder

WEATHER Cloudy

COUNTY Henry

TEMP. 72°

TOWNSHIP Ridgeville

SECTION 29

T _____ R _____

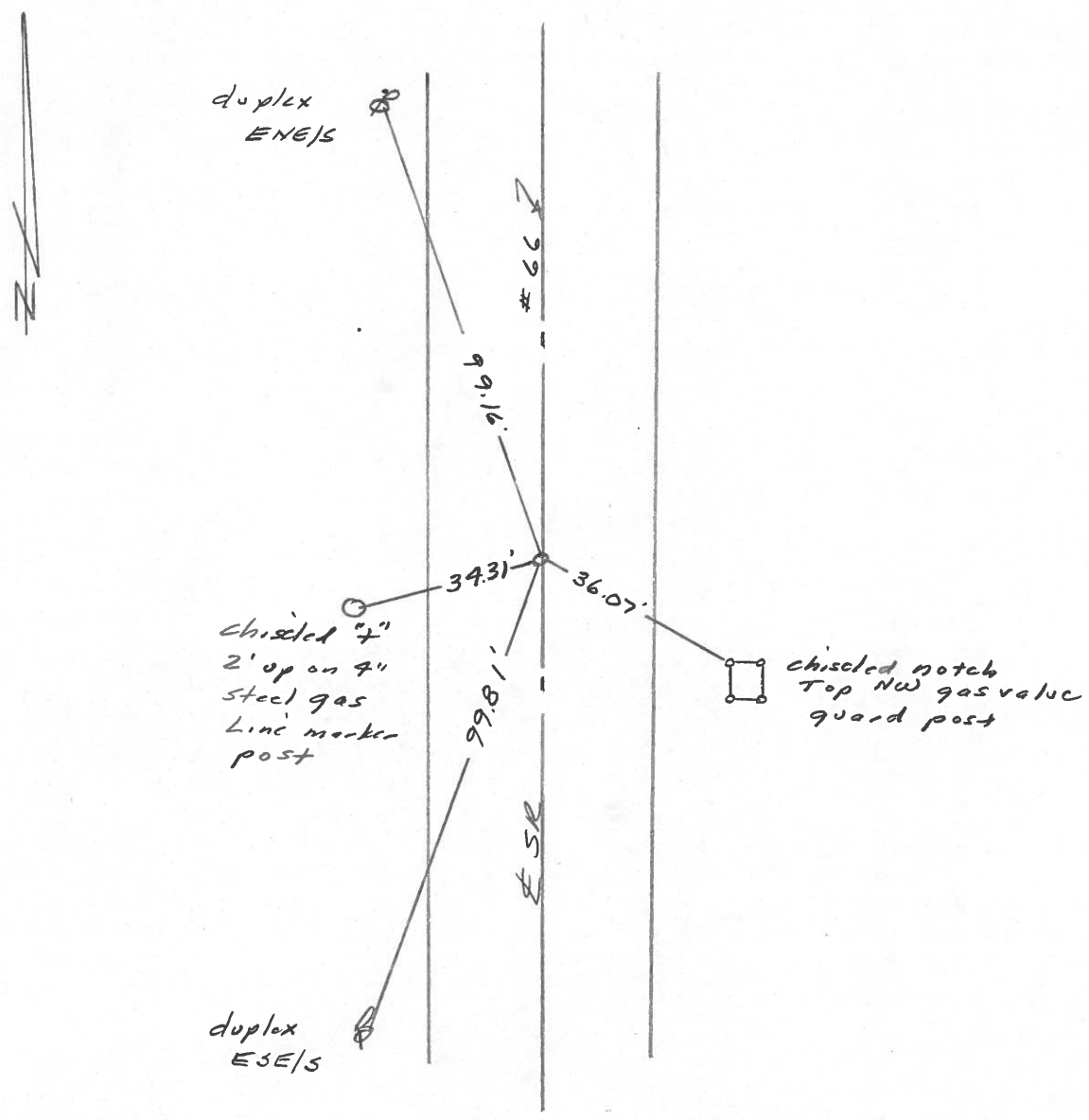
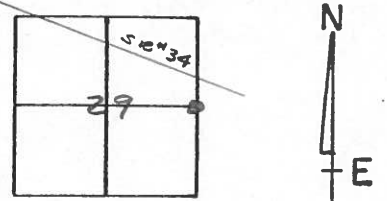
TYPE MONUMENT 5m. RR. Spk.

ON SURFACE - BELOW Surface

LEFT- & PAV'T. - RIGHT _____

_____ TO _____ EDGE PAVEMENT

S.L.M. 178+15.86



County HENRY S.R. 66

Date 7-6-84

Township RIDGEVILLE

Weather P. CLEAR

Section 29

Temp. 70°

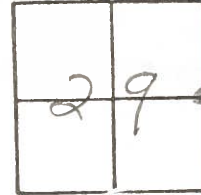
T6N, R5E

Personnel Hoffman

LOEHKE H.C.

HOUSEHOLDER R.C.

#2



Fd 1" IRON PIPE 1 1/2" Below Surface

SLM = 178 + 10

0.7' Lt. & Post

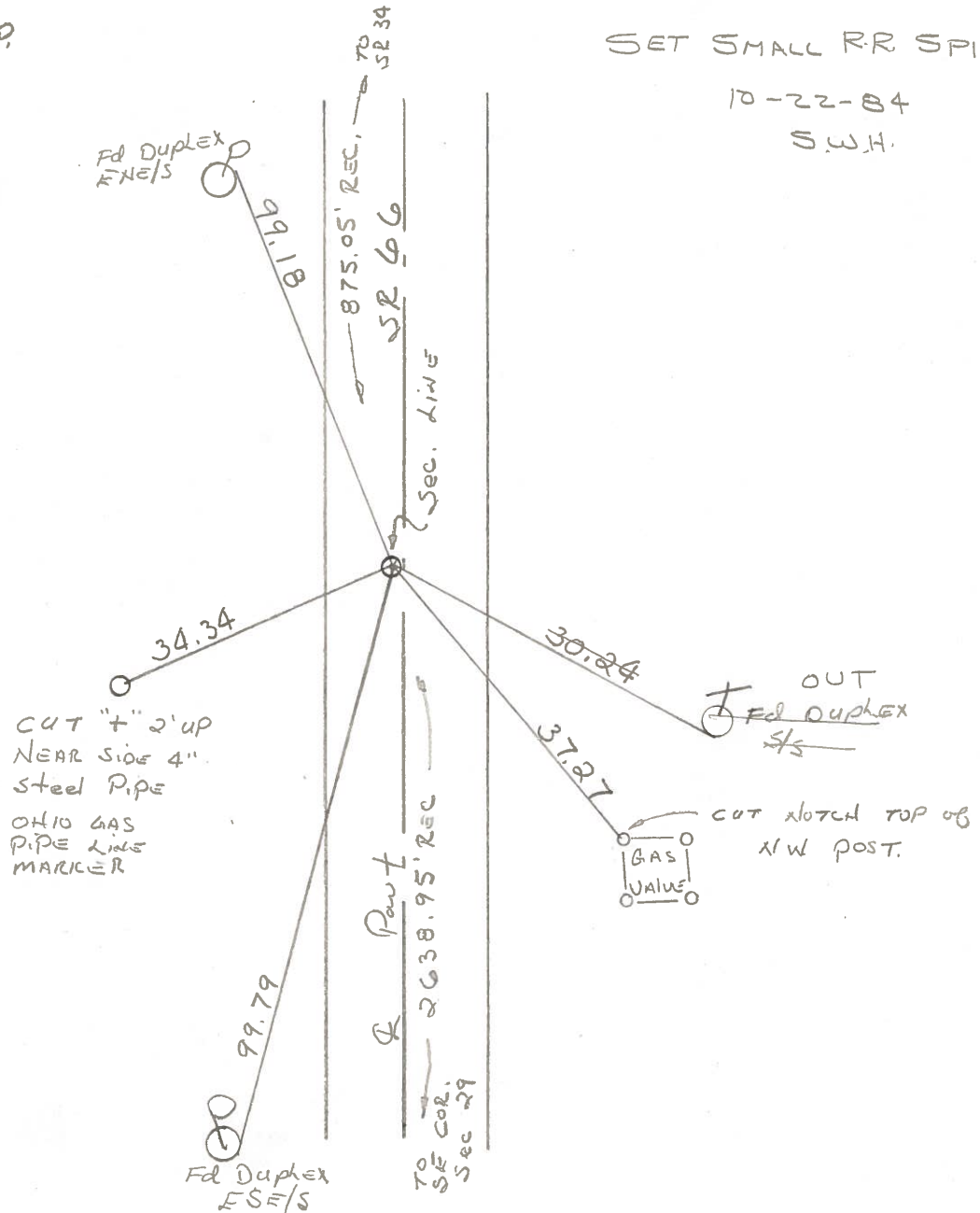
11.3' TO LT. EP

12.8' TO RT. EP

SET SMALL R.R SPIKE

10-22-84

S.W.H.



PERSONNEL TITLE PERSONNEL TITLE

Red Beach
W. Knappe

COUNTY HENRY

DATE March 1975

S. R. 66

WEATHER

SEC Ridgeville Twp.

TEMP

DESCRIPTION

CONTROL POINTS

JOB NO.

