

O.D.O.T. DISTRICT 2 SURVEY OFFICE (USE ONLY)

PERSONNEL

REFERENCE NO. 3

SHEET 3 OF 9

NOTES CARSON  
 H.C. HOMAN  
 R.C. POORE  
RHOADES

DATE 5-6-17  
 WEATHER CLOUDY  
 TEMP. 65°F

ROUTE SR 66  
 COUNTY HENRY  
 TOWNSHIP RIDGEVILLE  
 SECTION 29  
T 6 N R 5 E

DWG BY MAHLER PID 86886

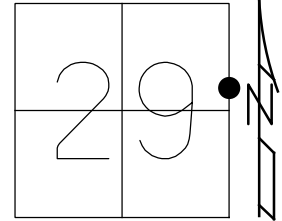
TYPE MONUMENT MAG/WASHER

ON SURFACE - ~~BELOW~~ ON

OFFSET CL PAVEMENT 0.5' ~~ET~~ : RT

- TO - EDGE PAVEMENT

STATION: 134+58.66



HORZ.DATUM: NAD83 2009

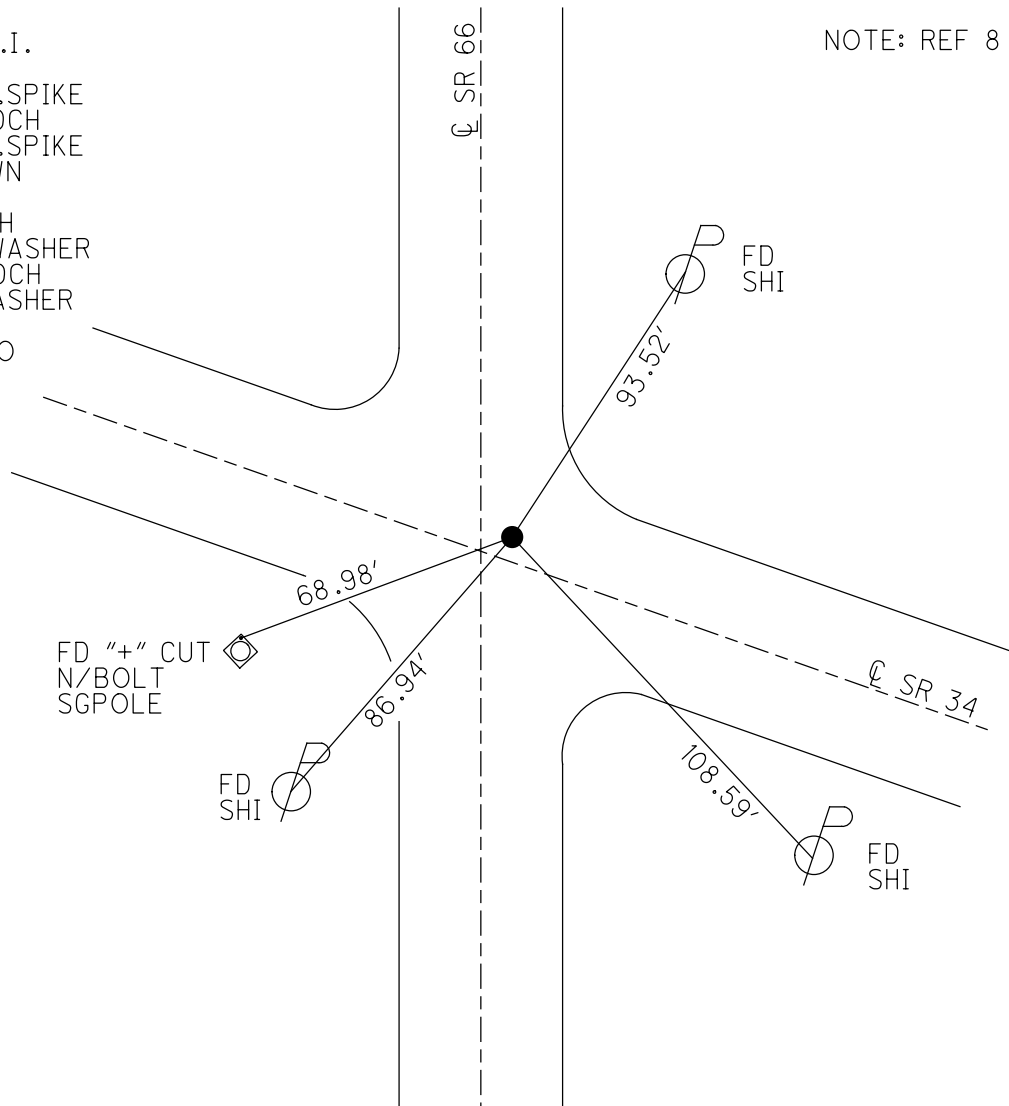
GEOID: NAVD88 2009

GRID: NORTHING: 655500.911

EASTING: 1473536.358

RECORD: P.I.  
 $\Delta = 0^\circ 34'$   
 FD SM.R.R.SPIKE  
 5/31/05, DCH  
 FD SM.R.R.SPIKE  
 3 1/2" DOWN  
 HREF3  
 6/1/12, DCH  
 SET MAG/WASHER  
 10/31/12, DCH  
 FD MAG/WASHER  
 REF8  
 3/1/16, JFO

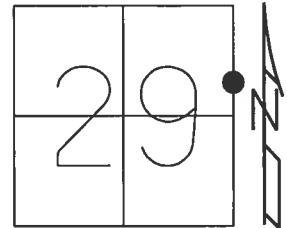
NOTE: REF 8 SR 34



O.D.O.T. DISTRICT 2 SURVEY OFFICE (USE ONLY)

PERSONNEL \_\_\_\_\_ REFERENCE NO. 3 SHEET 3 OF 9  
 NOTES CARSON DATE 5/16/17 ROUTE SR 66  
 H.C. HOMAN WEATHER CLOUDY COUNTY HENRY  
 R.C. POORE TEMP. 65° TOWNSHIP RIDGEVILLE  
RHOADES SECTION 29  
 T 6 N R 5 E

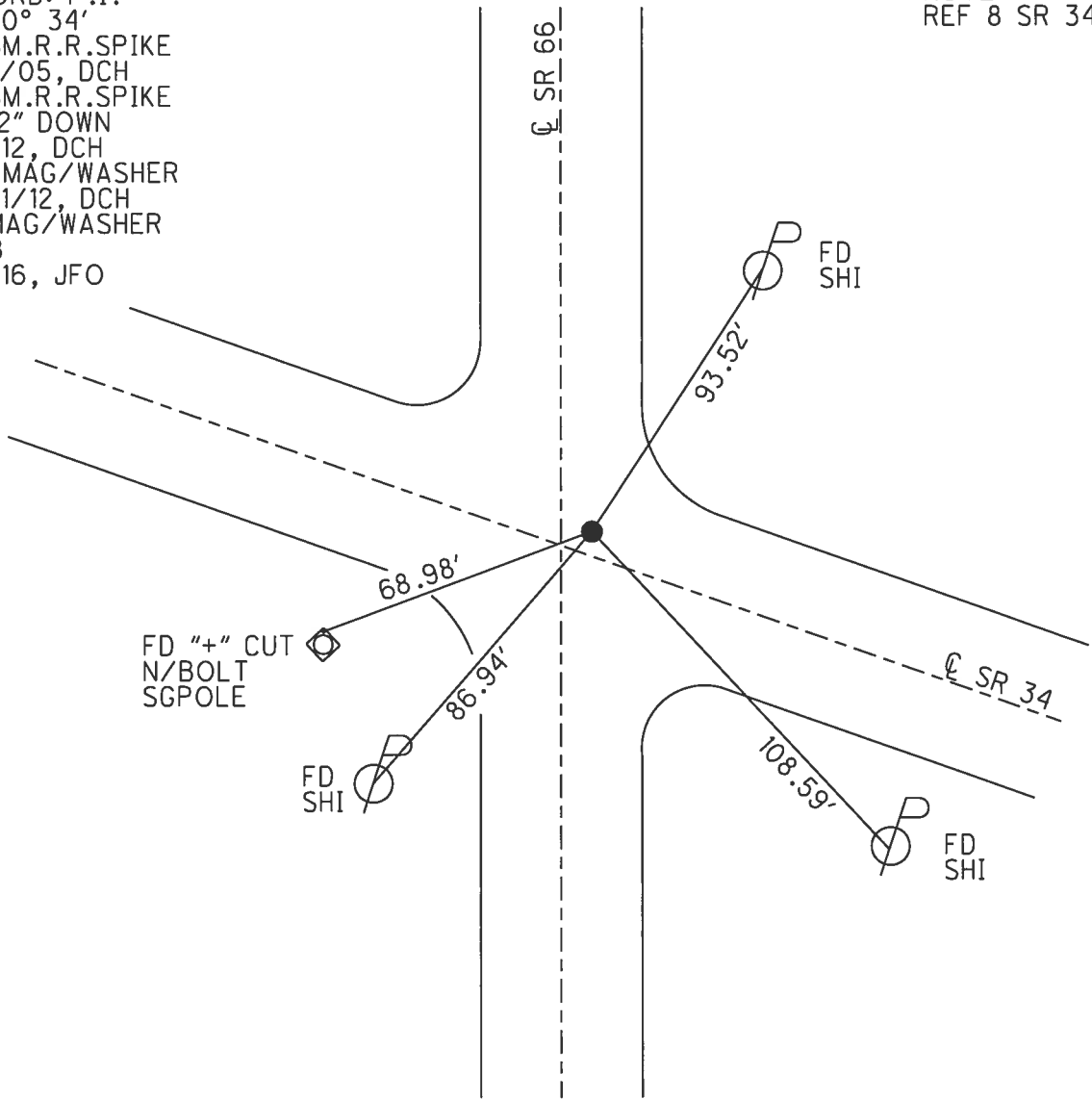
TYPE MONUMENT MAG/WASHER  
 ON SURFACE - ~~BELOW~~ ON  
~~LEFT~~ - CL PAV'T - RIGHT 0.5'  
TO - EDGE PAVEMENT  
 S.L.M. 134+64



Grid: Northing: 655500.898 Easting: 1473536.400

RECORD: P.I.  
 $\Delta = 0^\circ 34'$   
 FD SM.R.R.SPIKE  
 5/31/05, DCH  
 FD SM.R.R.SPIKE  
 3 1/2" DOWN  
 6/1/12, DCH  
 SET MAG/WASHER  
 10/31/12, DCH  
 FD MAG/WASHER  
 REF8  
 3/1/16, JFO

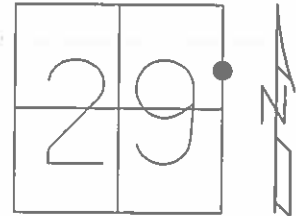
NOTE:  
 REF 8 SR 34



O.D.O.T. DISTRICT 2 SURVEY OFFICE (USE ONLY)

PERSONNEL \_\_\_\_\_ REFERENCE NO. 3 SHEET 3 OF 9  
 NOTES HOMAN DATE 6-1-12 ROUTE SR 66/34  
 H.C. ROUSOS WEATHER CLOUDY COUNTY HENRY  
 R.C. COUCHER TEMP. 55' F TOWNSHIP RIDGEVILLE  
RHOADES SECTION 29  
 T 6 N R 5 E

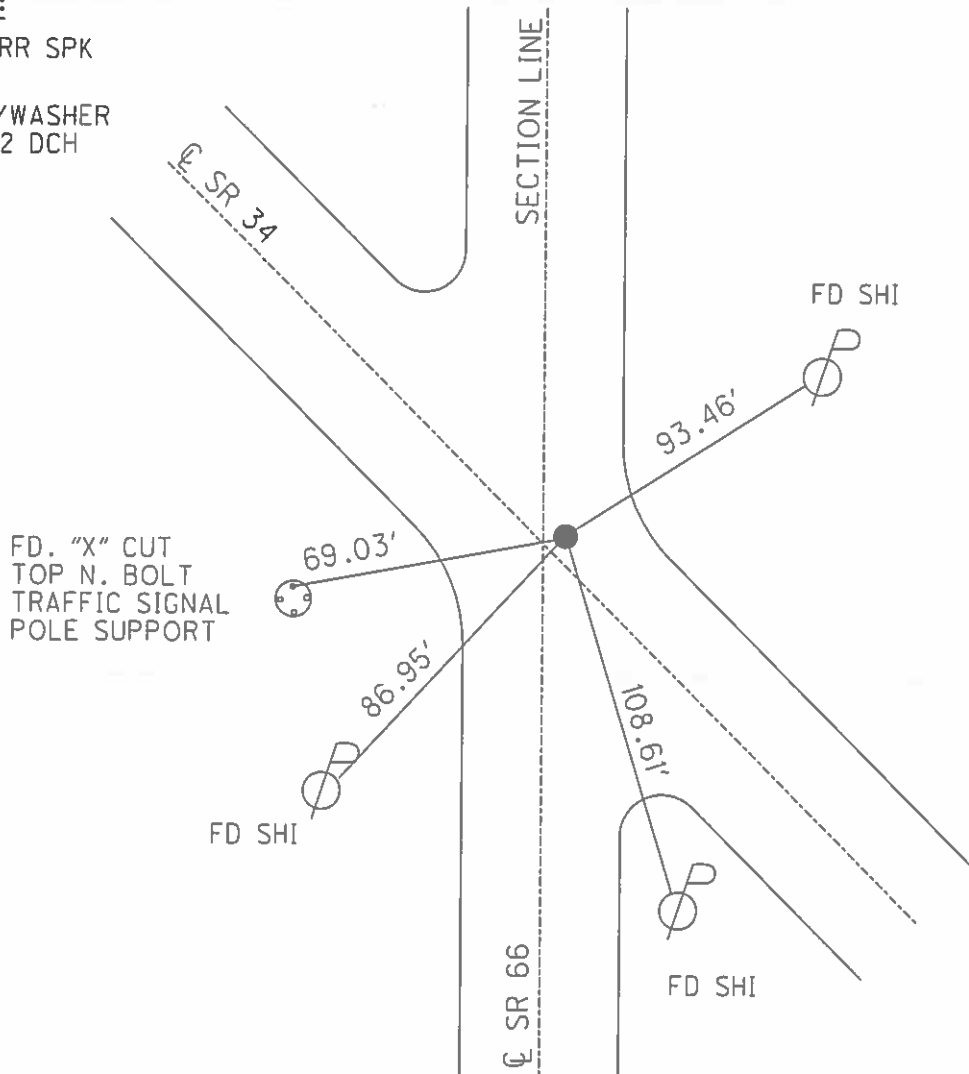
TYPE MONUMENT SM RSPK  
~~ON SURFACE~~ - BELOW 3 1/2"  
~~LEFT~~ - CL PAV'T - RIGHT 0.5'  
12.6' TO RT EDGE PAVEMENT  
 S.L.M. 134+64



GRID: NORTHING: 655500.911 EASTING: 1473536.358

RECORD:

FD. SM. RR SPK  
 6-1-2012  
 SET MAG/WASHER  
 10-31-2012 DCH



O.D.O.T. DISTRICT 2 SURVEY OFFICE

PERSONNEL

REFERENCE NO. 8  
SP 66 = 3

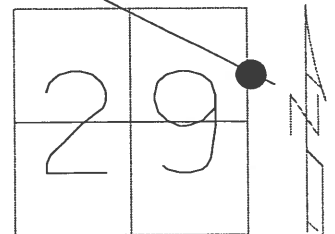
SHEET 9 OF 18

NOTES \_\_\_\_\_  
 H.C. \_\_\_\_\_  
 R.C. \_\_\_\_\_  
 \_\_\_\_\_  
 \_\_\_\_\_

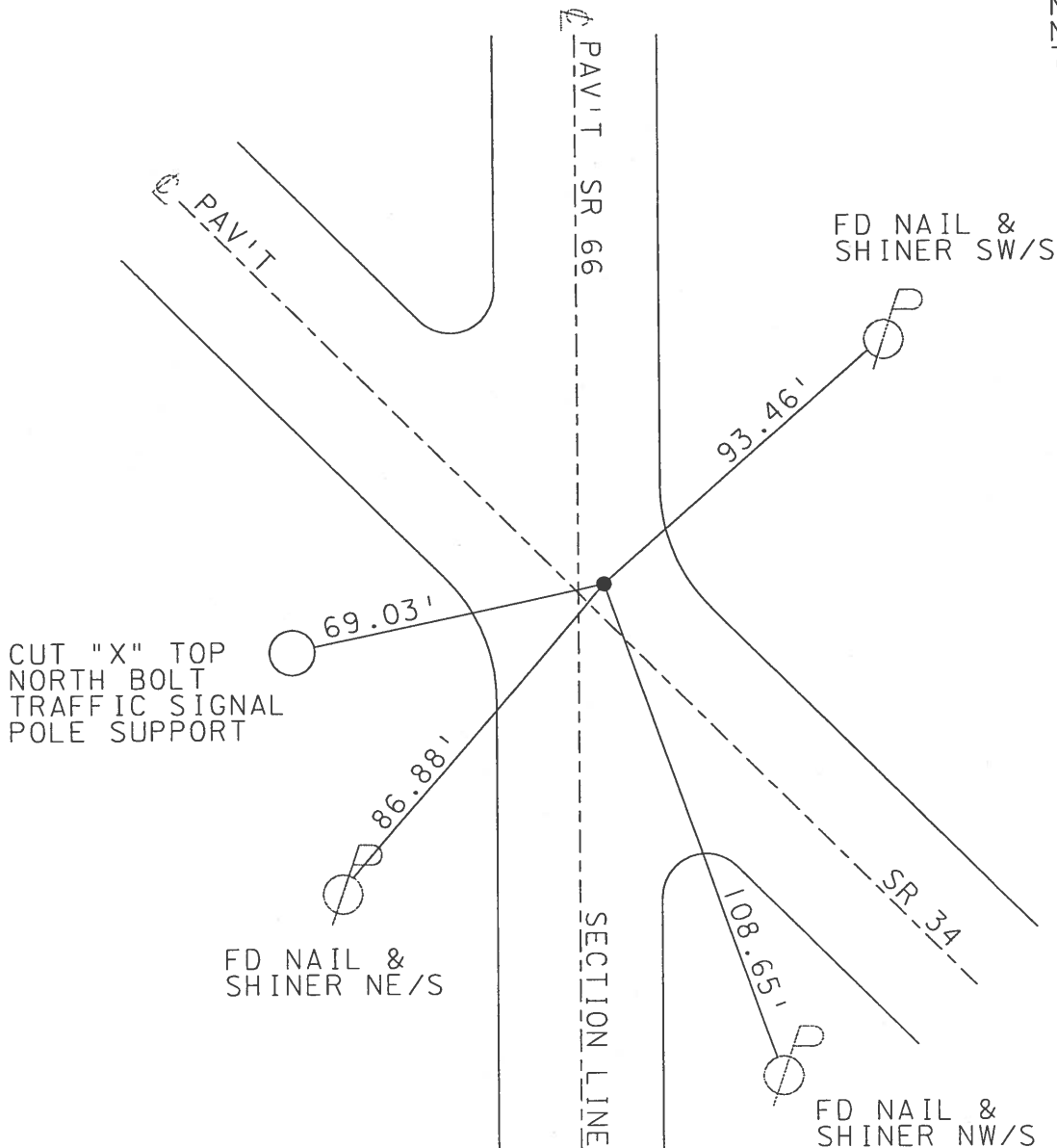
DATE 5-1-05  
 WEATHER CLEAR  
 TEMP. 70°

ROUTE 34  
 COUNTY HENRY  
 TOWNSHIP RIDGEVILLE  
 SECTION 29  
T 6 N R 5 E

TYPE MONUMENT SM. RR SPIKE  
~~ON SURFACE~~ - BELOW 3.5 IN BELOW  
~~LEFT~~ - Q PAV'T - RIGHT .5 FT RIGHT  
TO EDGE PAVEMENT  
 S.L.M. 106+32



NO WORK -  
 NOT IN JOB  
 7-12-05 JH



# O.D.O.T. DISTRICT 2 SURVEY OFFICE

PERSONNEL

REFERENCE NO. 3

SHEET 3 OF 8

NOTES SLOVAK

H.C. Rousos

R.C. CANTERBURY

DATE 8-14-95

WEATHER HOT

TEMP. +90°

ROUTE S.R. 66

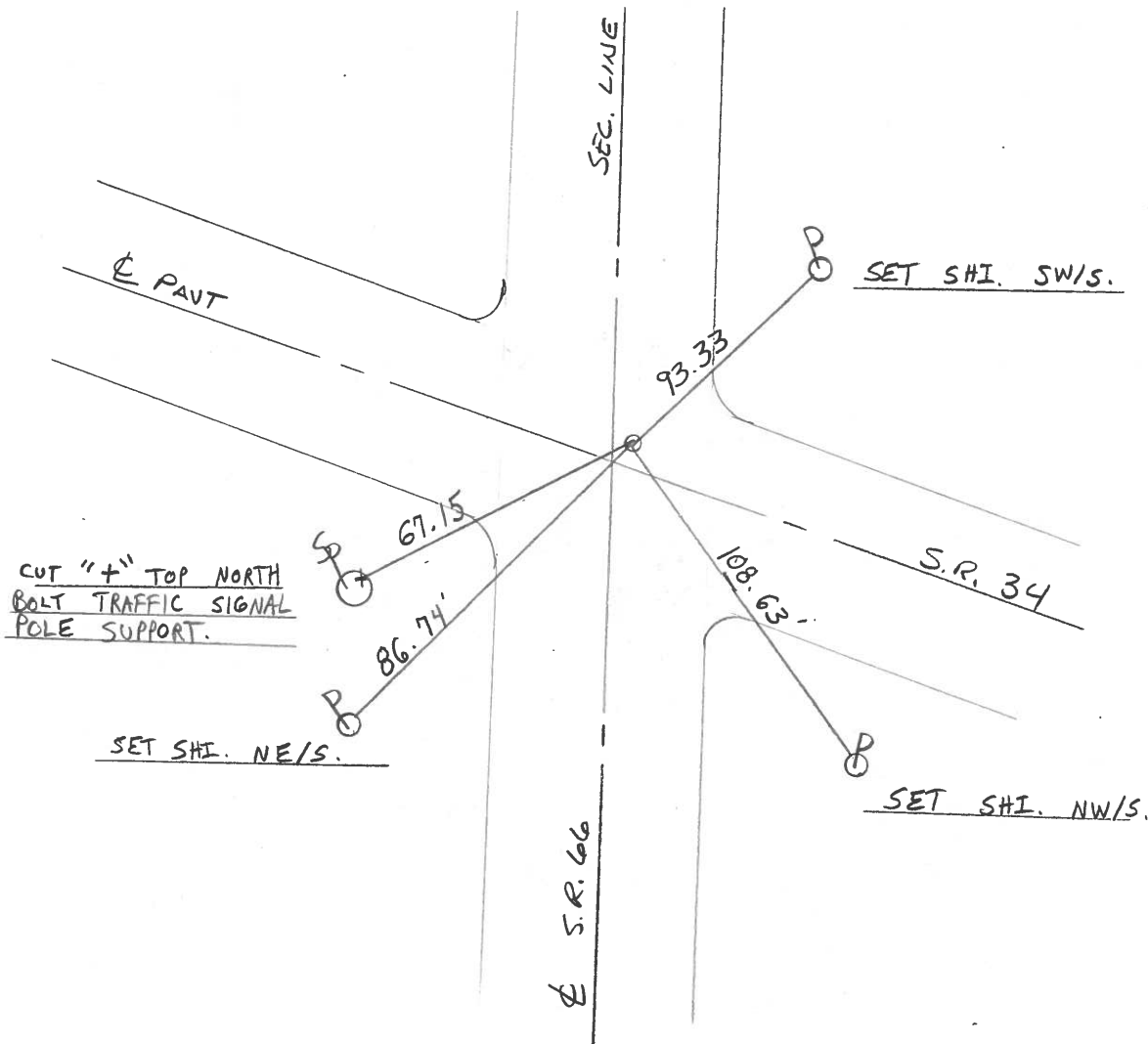
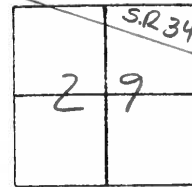
COUNTY HENRY

TOWNSHIP RIDGEVILLE

SECTION 29

T 6 N R 5 E

TYPE MONUMENT SM. RR. SPIKE  
 ON SURFACE - BELOW 3 1/2" BELOW  
 LEFT - PAV'T. - RIGHT .5' RT &  
 TO EDGE PAVEMENT  
 S.L.M. 186 + 93



County HENRY S.R. 66

Township RIDGEVILLE

Section 29

T6N, R5E

Personnel Hoffman

LOEHRKE H.C.

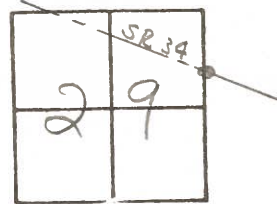
HOUSEHOLDER R.C.

#3

Date 7-6-84

Weather P. CLEAR

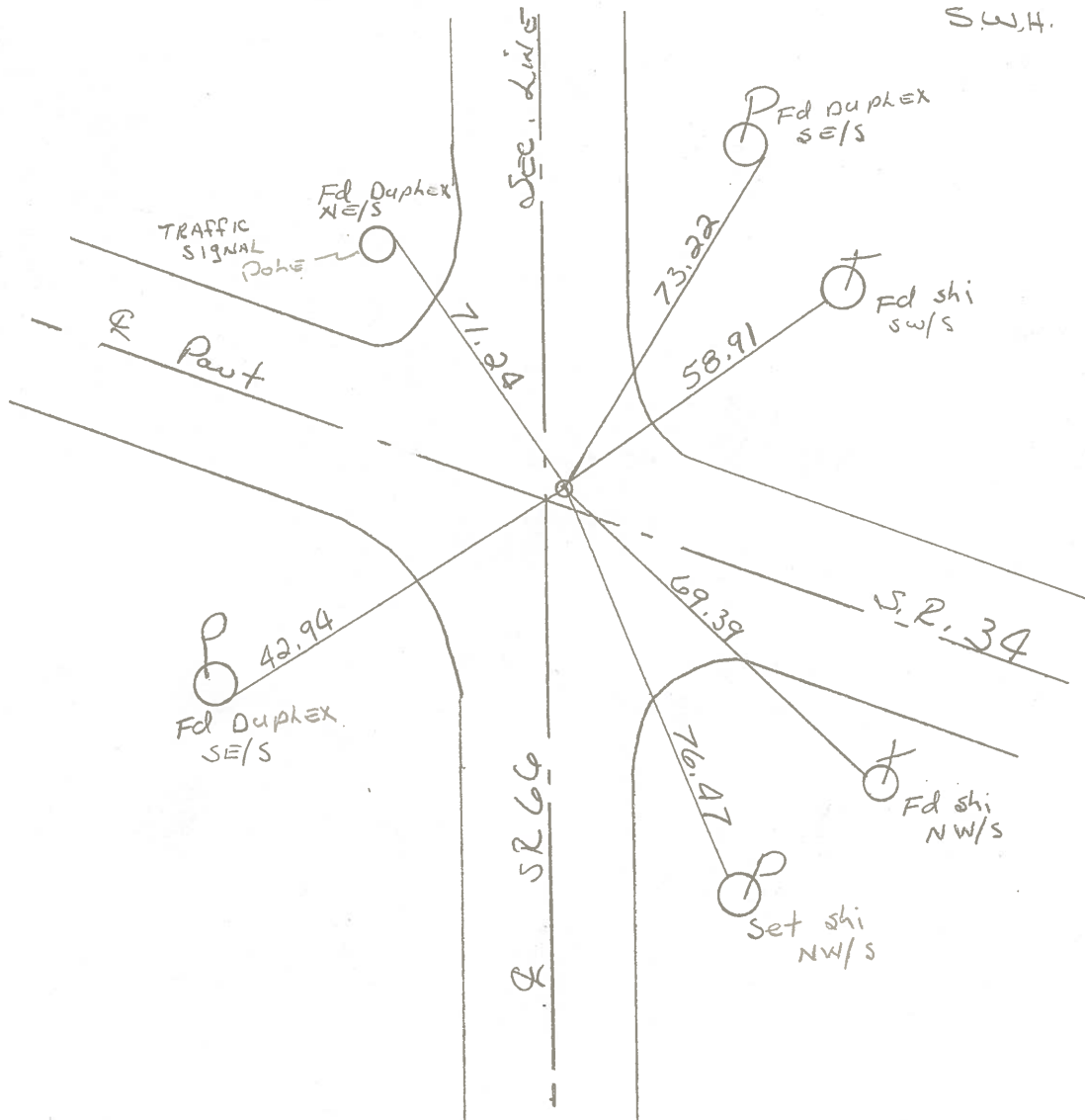
Temp. 70°



Fd 1" IRON PIPE 1 1/2" Below Surface  
 1.0' N. of & Post SR34  
 0.5' E. of & Post SR66

S.L.M. 186+84  
 SR 66

SET SMALL RR SPIKE  
 10-22-84  
 S.W.H.



Q.D.O.T. DISTRICT 2 SURVEY OFFICE

SHEET \_\_\_\_\_ OF \_\_\_\_\_

County HENRY S.R. 66

Date 4-30-82

Township RIDGEVILLE

Weather CLOUDY

Section 28-29

Temp. +50°

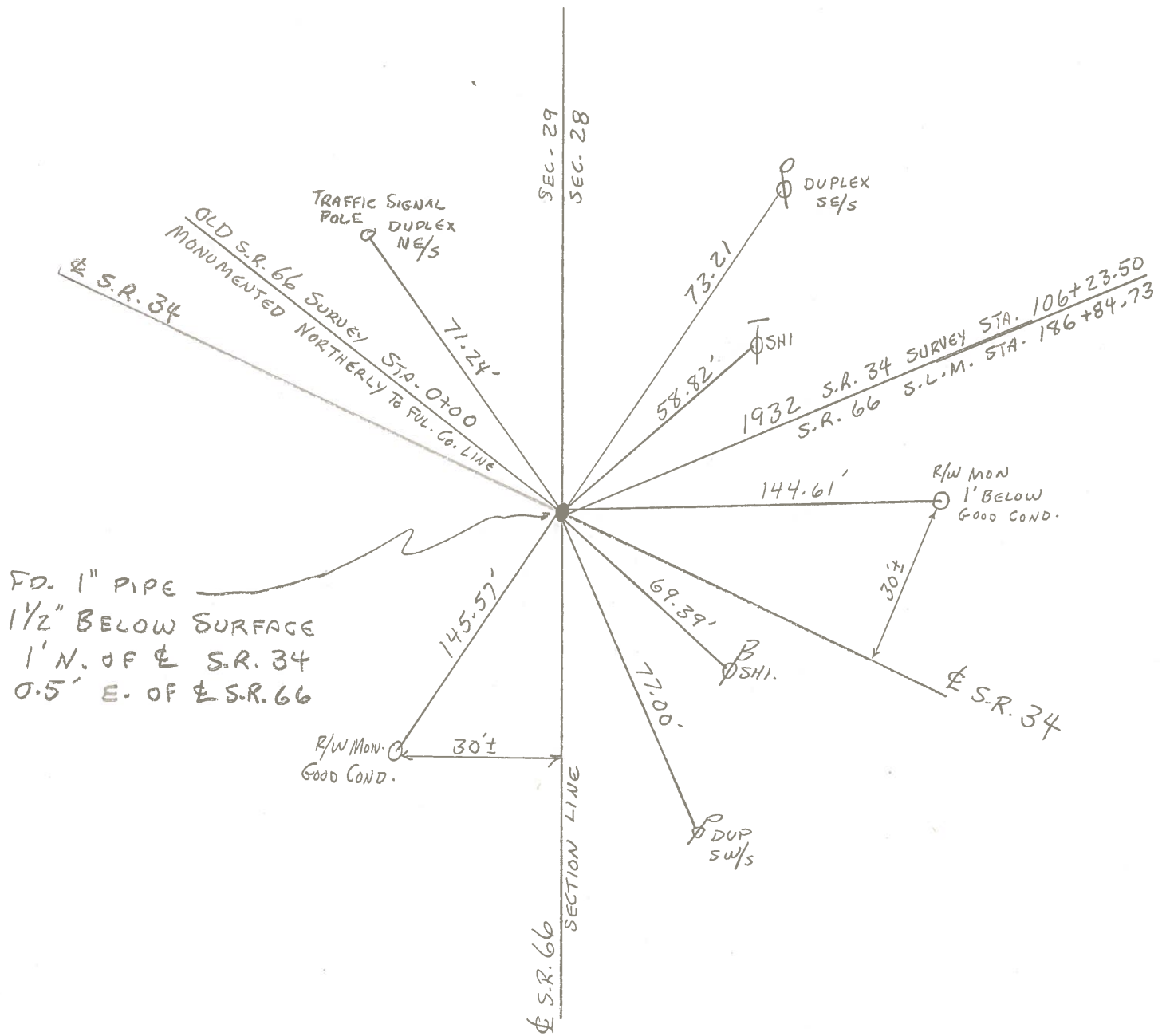
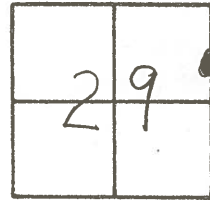
T.N, R.E

Personnel HOFFMAN

HOUSE HOLDER

LOEHRKE

#3







PERSONNEL TITLE PERSONNEL TITLE

Louys  
Wise  
Stofer  
Perkins

COUNTY He DATE 8-29-60  
S. R. 66 WEATHER Fair.  
SEC. From Rt #34 to north TEMP. 85°

DESCRIPTION Witnesses to Control Points JOB NO. \_\_\_\_\_

LEFT CENTER LINE RIGHT

