

O.D.O.T. DISTRICT 2 SURVEY OFFICE (USE ONLY)

PERSONNEL

REFERENCE NO. 4

SHEET 4 OF 9

NOTES HOMAN DATE 6-1-12
 H.C. ROUSOS WEATHER CLOUDY
 R.C. HOMAN TEMP. 55°F

ROUTE SR 66
 COUNTY HENRY
 TOWNSHIP RIDGEVILLE
 SECTION 29

COUCHER, HARBAUGH
 DWG BY MAHLER PID 86886

T 6 N R 5 E

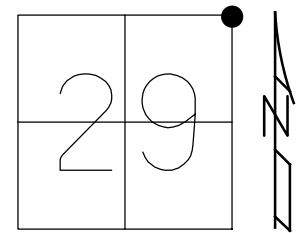
TYPE MONUMENT SM.R.R.SPIKE

~~ON SURFACE~~ - BELOW 2"

OFFSET \odot PAVEMENT 0.7" ~~LF~~ : RT

10.5' TO RT EDGE PAVEMENT

STATION: 152+30.26



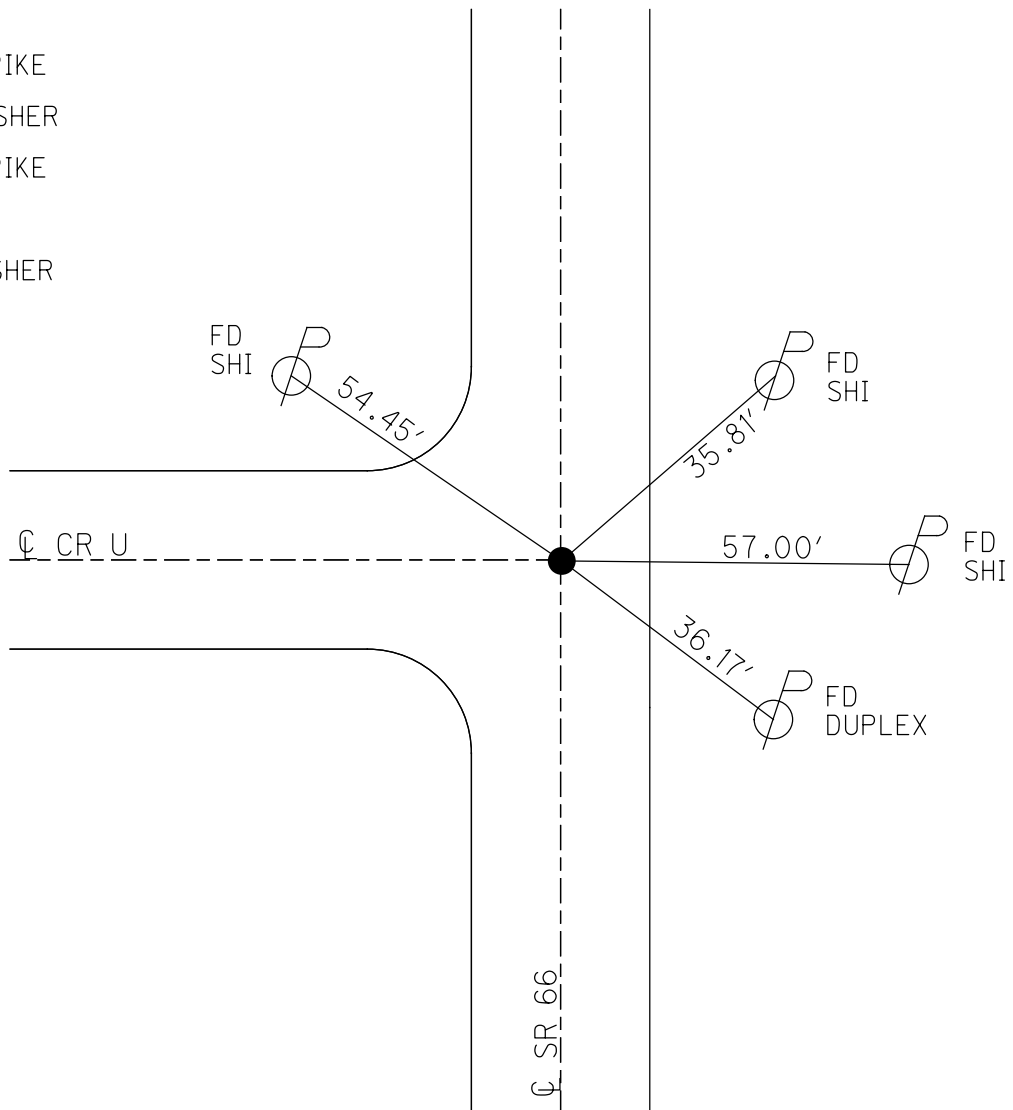
HORZ.DATUM: NAD83 2009

GEOID: NAVD88 2009

GRID: NORTHING: 657272.205

EASTING: 1473569.252

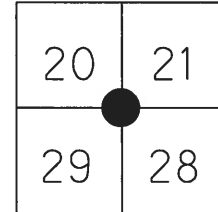
RECORD:
 FD SM.R.R.SPIKE
 8/14/95, MC
 SET P.K./WASHER
 9-4-96
 FD SM.R.R.SPIKE
 2" DOWN
 HREF4
 6/1/12, DCH
 SET MAG/WASHER
 10-31-12, DCH



O.D.O.T. DISTRICT 2 SURVEY OFFICE (USE ONLY)

PERSONNEL _____ REFERENCE NO. 4 SHEET 4 OF 7
 NOTES _____ DATE 6-1-2012 ROUTE SR 66
 H.C. ROUSOS WEATHER CLOUDY COUNTY HENRY
 R.C. HOMAN TEMP. 55° F TOWNSHIP RIDGEVILLE
 _____ COUCHER _____ SECTION 20-21-28-29
 _____ RHOADES _____ T 6 N R 5 E

TYPE MONUMENT PK/WASHER
~~ON SURFACE~~ - BELOW 2"
~~LEFT~~ - ☉ PAV'T - RIGHT 0.7'
10.5 TO RT EDGE PAVEMENT
 S.L.M. 152+59.2

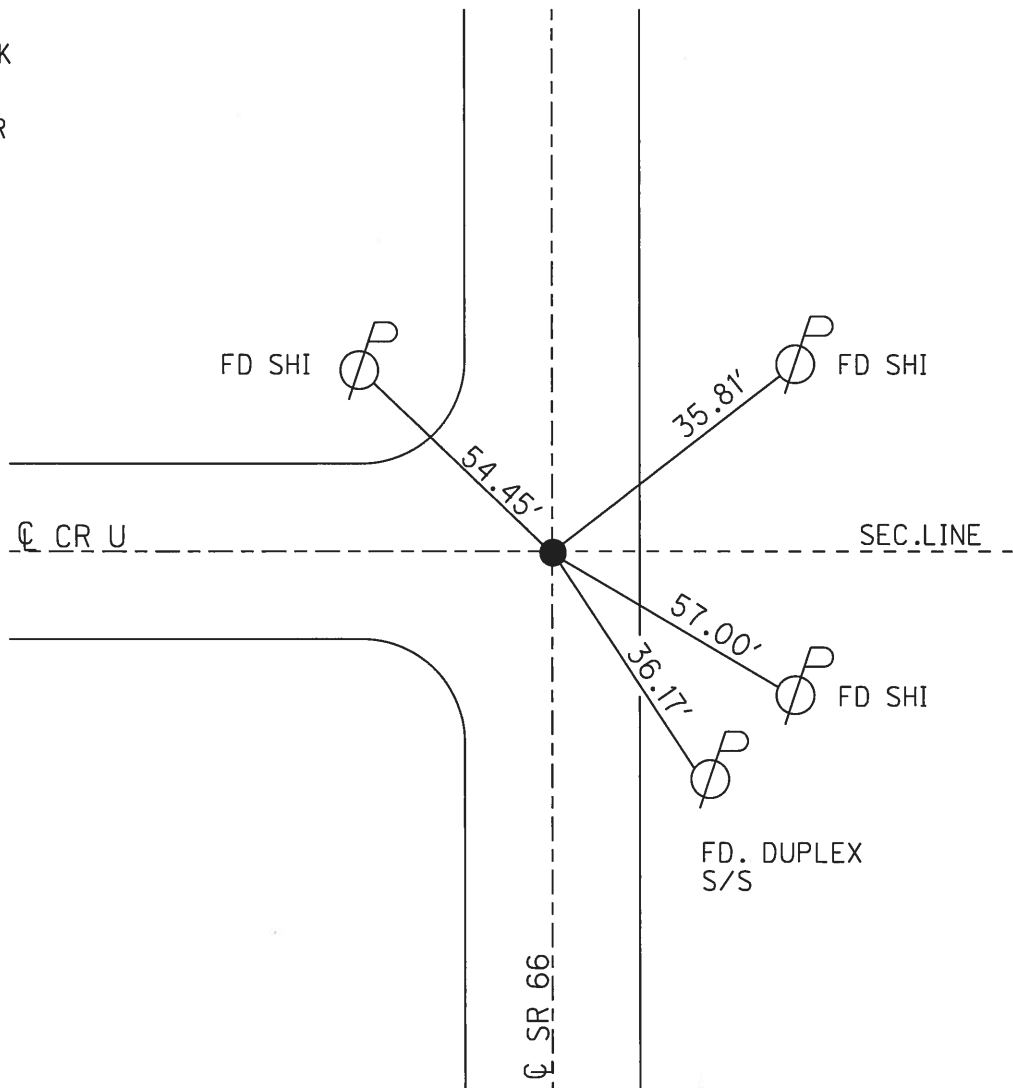


GRID: NORTHING: 657272.205 EASTING: 1473569.252

RECORD:

SET PK/WASHER
 OVER SM. RR SPK
 9-4-96

 SET MAG/WASHER
 10-31-2012
 DCH



O.D.O.T. DISTRICT 2 SURVEY OFFICE

PERSONNEL _____

REFERENCE NO. 4

SHEET 4 OF 8

NOTES SLOVAK

H.C. Rousas

R.C. CANTERBURY

DATE 8-14-95

WEATHER HOT

TEMP. +90°

ROUTE S.R. 66

COUNTY HENRY

TOWNSHIP RIDGEVILLE

SECTION 20-21-28-29

T 6 N R 5 E

TYPE MONUMENT SM. R.R. SPIKE

ON SURFACE - ~~BELOW~~ ON SURFACE

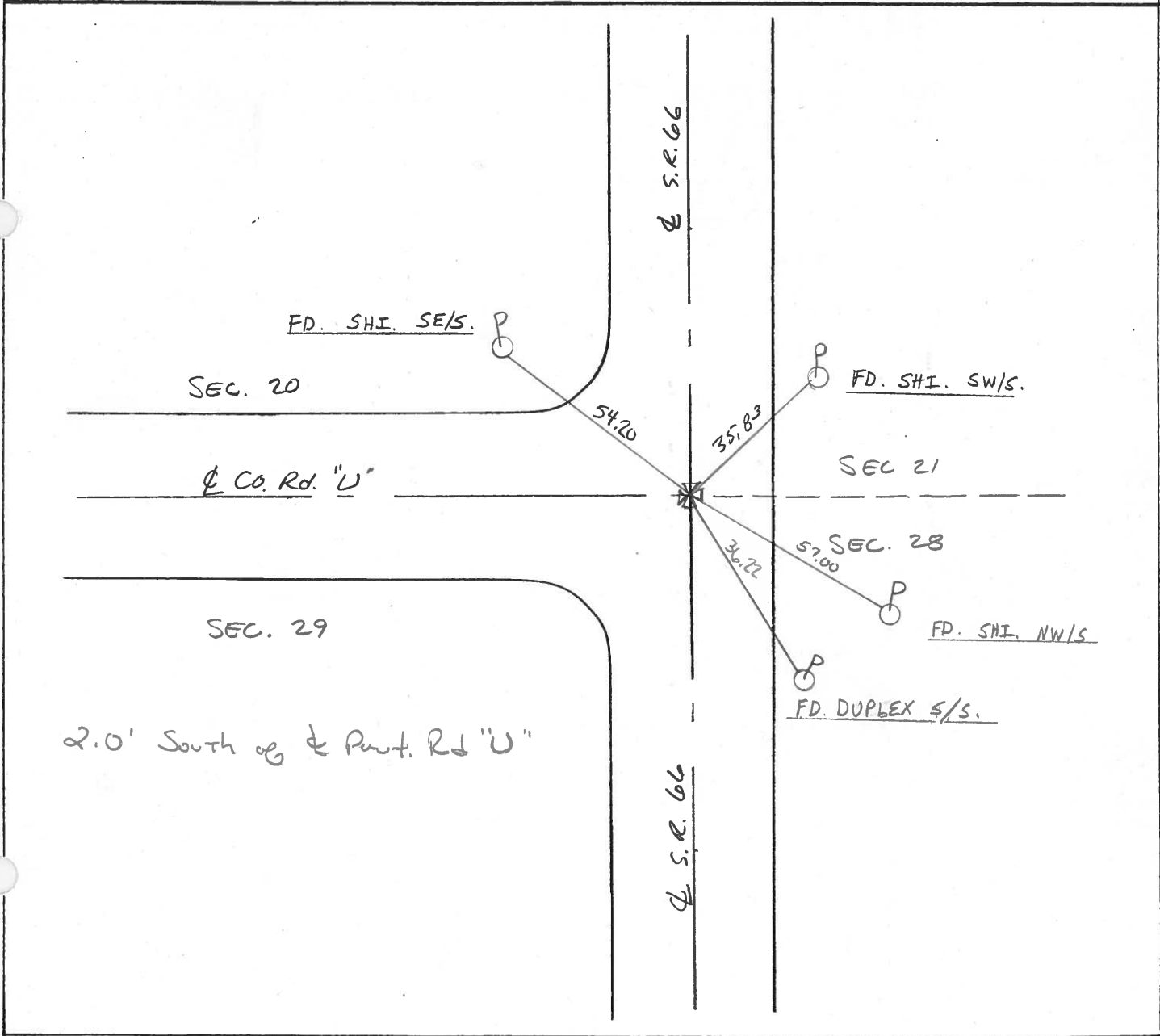
LEFT- & PAV'T. - RIGHT 0.7" RT &

10.5' TO RT EDGE PAVEMENT

S.L.M. 204 + 63

*Set
P.K. / WASHER
9-4-96*

| | |
|----|----|
| 20 | 21 |
| 29 | 28 |



O.D.O.T. DISTRICT 2 SURVEY OFFICE

PERSONNEL _____

REFERENCE NO. #4

SHEET 5 OF 5

NOTES 1. Stone

H.C. D. Curtis

DATE 2 Oct. 89

ROUTE SR # 66

R.C. J. Householder

WEATHER Cloudy

COUNTY Henry

TEMP. 72°

TOWNSHIP Ridgeville

SECTION 20-21-28-29

T _____ R _____

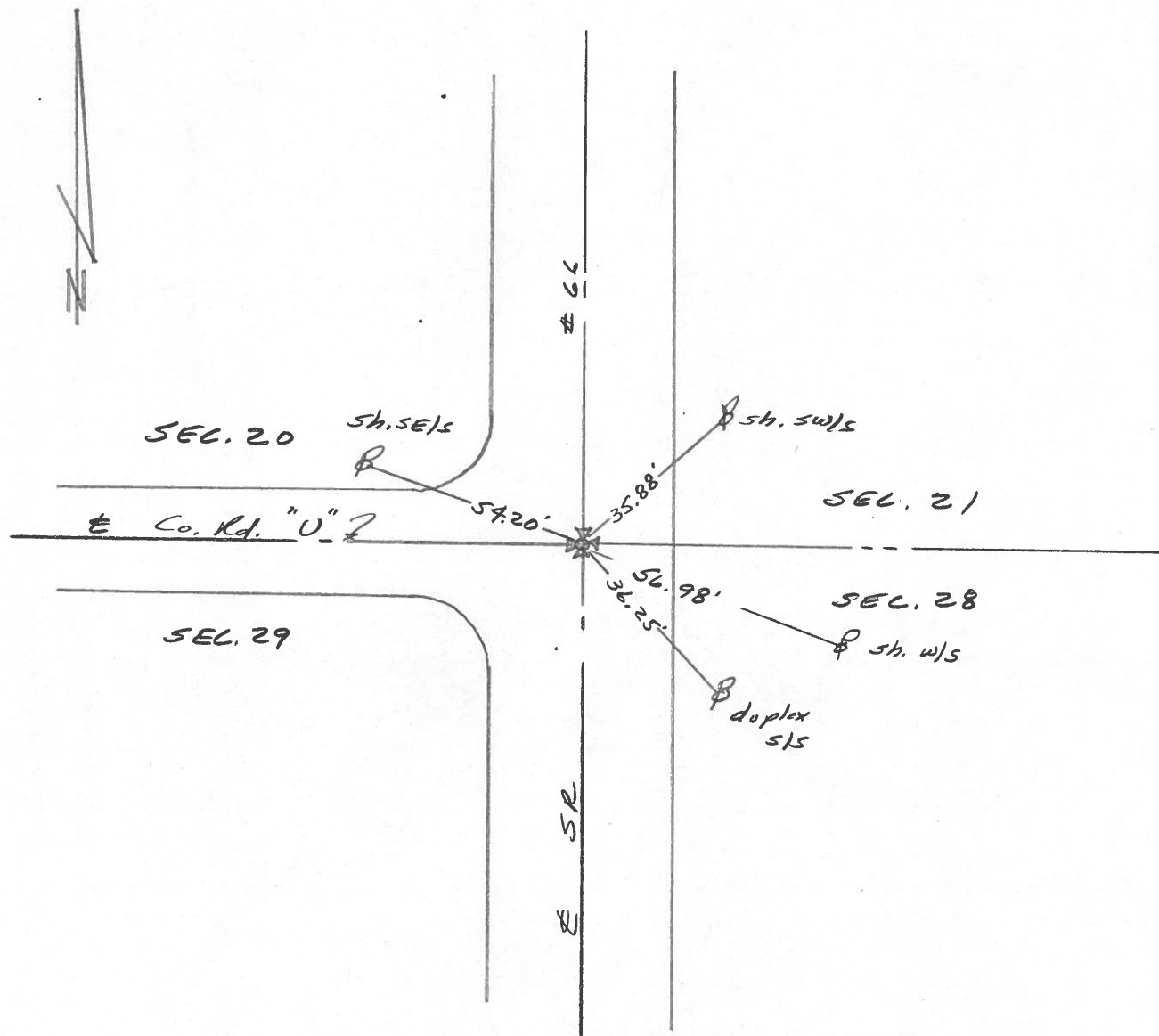
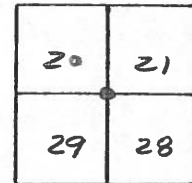
TYPE MONUMENT Small RR Spk.

ON SURFACE - BELOW Surface

LEFT- & PAV'T. - RIGHT _____

_____ TO _____ EDGE PAVEMENT

S.L.M. 204+63.44



County HENRY S.R. 66

Township RIDGEVILLE

Section 29

T6N, R5E

Personnel HOFFMAN

LOHRICE H.C.

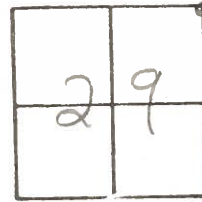
HOUSEHOLDER R.C.

#4

Date 7-6-84

Weather P. CLEAR

Temp. +70°



Fd 1" I. PIPE 1 1/2" BELOW SURFACE

0.5' RT. of & PAUT SR 66

10.7' TO RT. EP

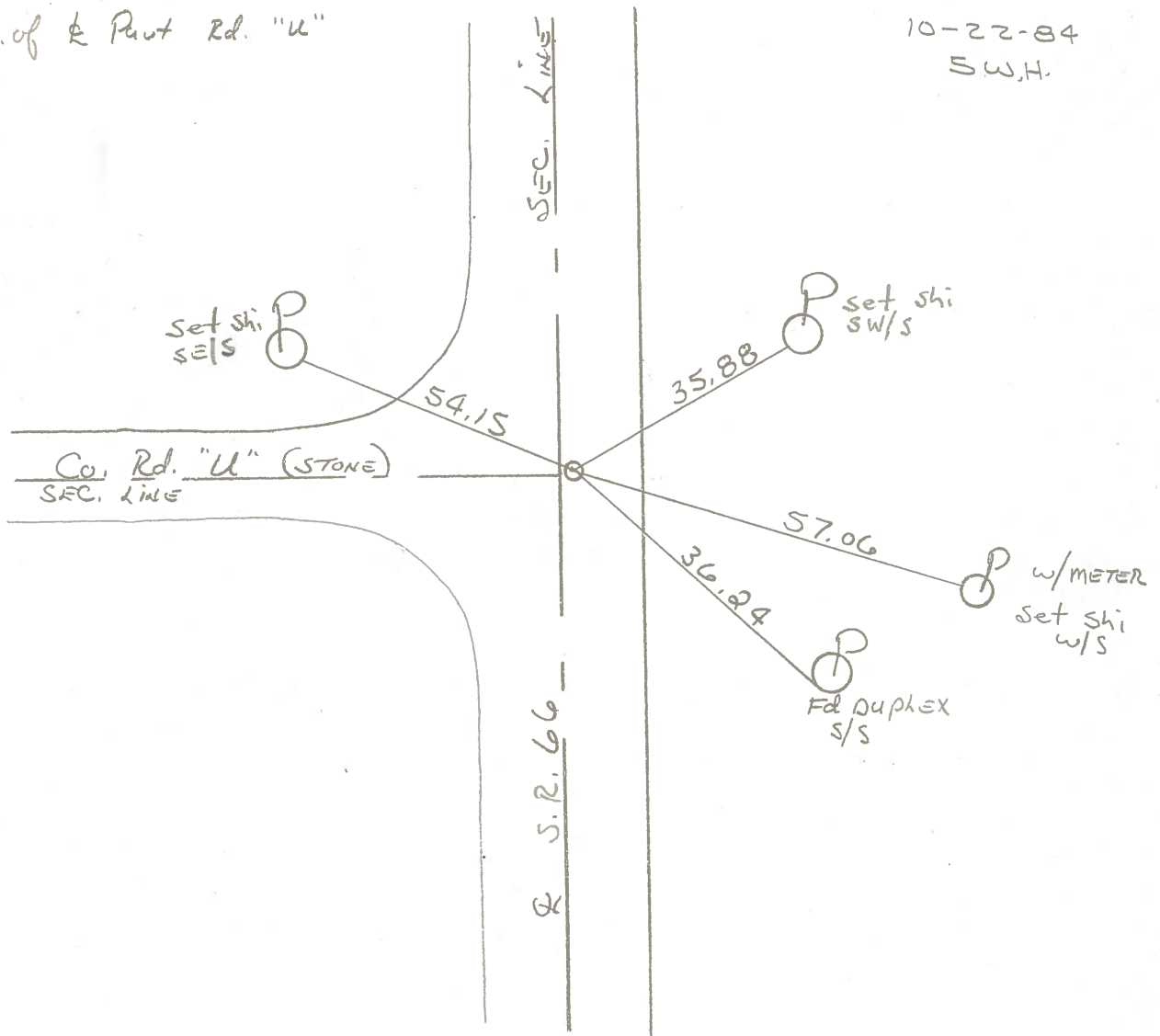
3.0' S. of & PAUT Rd. "U"

S.L.M. 204+58

SET SMALL RR. SPIKE

10-22-84

S.W.H.



County HENRY S.R. 66

Date 4-30-82

Township RIDGEVILLE

Weather CLOUDY

Section 29

Temp. +50°

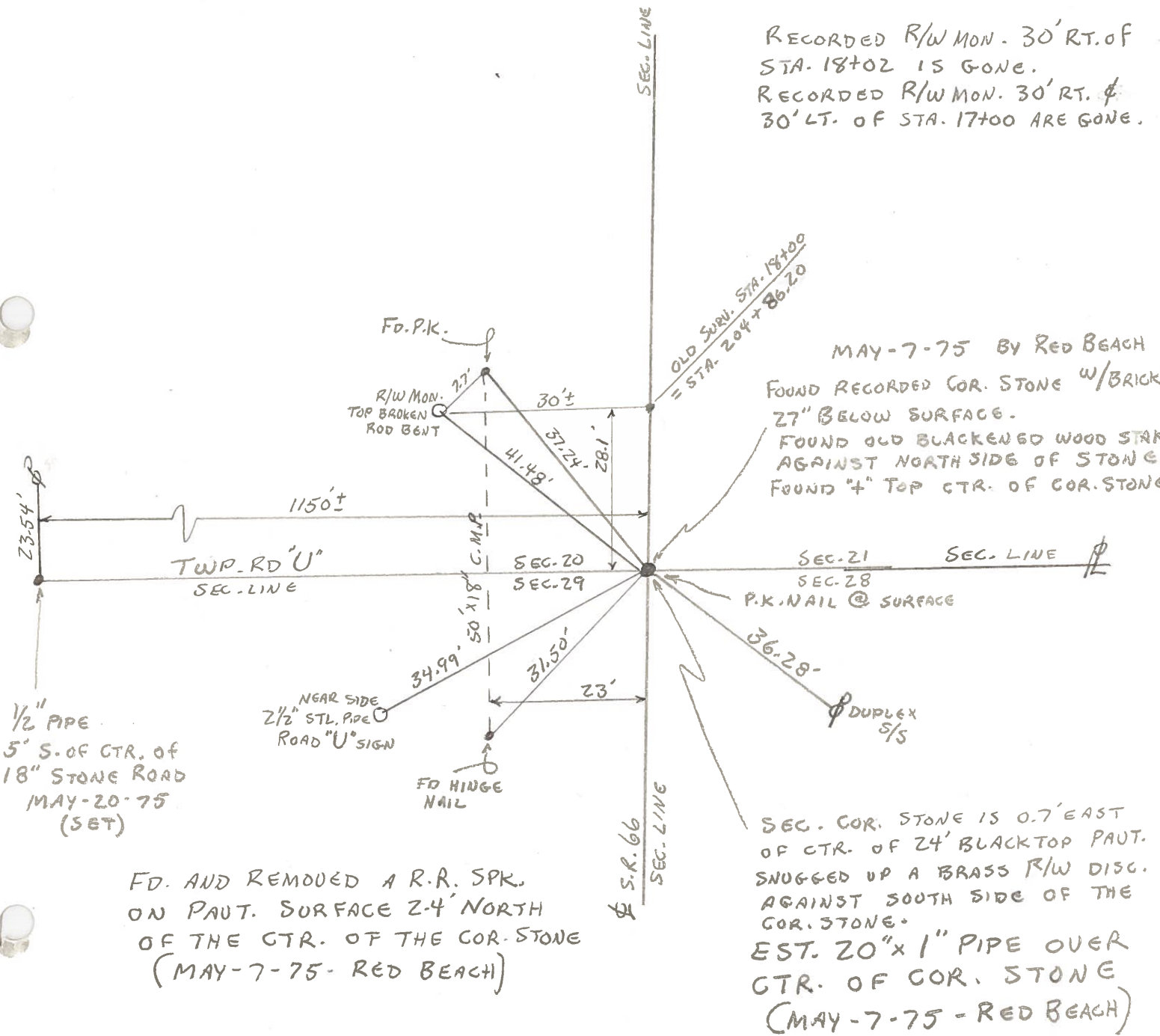
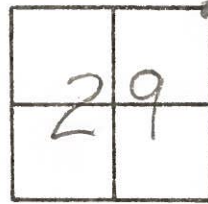
T N, R E

Personnel HOFFMAN

#4

HOUSE HOLDER

LOENRKE



RECORDED R/W MON. 30' RT. OF STA. 18+02 IS GONE.
 RECORDED R/W MON. 30' RT. & 30' LT. OF STA. 17+00 ARE GONE.

MAY-7-75 BY RED BEACH
 FOUND RECORDED COR. STONE W/BRICK 27" BELOW SURFACE.
 FOUND OLD BLACKENED WOOD STAK AGAINST NORTH SIDE OF STONE
 FOUND "4" TOP CTR. OF COR. STONE

SEC. COR. STONE IS 0.7' EAST OF CTR. OF 24' BLACKTOP PAUT. SNUGGED UP A BRASS R/W DISC. AGAINST SOUTH SIDE OF THE COR. STONE.
 EST. 20" x 1" PIPE OVER CTR. OF COR. STONE (MAY-7-75 - RED BEACH)

FD. AND REMOVED A R.R. SPK. ON PAUT. SURFACE 2-4' NORTH OF THE CTR. OF THE COR. STONE (MAY-7-75 - RED BEACH)