

O.D.O.T. DISTRICT 2 SURVEY OFFICE (USE ONLY)

PERSONNEL

REFERENCE NO. 4 A

SHEET 5 OF 9

NOTES HOMAN

DATE 6-1-12

ROUTE SR 66

H.C. ROUSOS

WEATHER CLOUDY

COUNTY HENRY

R.C. COUCHER
HARBAUGH

TEMP. 55°F

TOWNSHIP RIDGEVILLE

DWG BY MAHLER PID 86886

SECTION 20

T 6 N R 5 E

TYPE MONUMENT P.K./WASHER

ON SURFACE - ~~BELOW~~ ON

OFFSET \odot PAVEMENT 1.2' \pm : RT

12.9' TO LT EDGE PAVEMENT

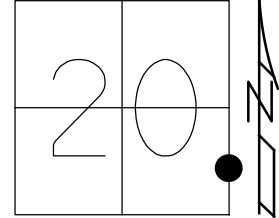
STATION: 168+27.84

HORIZ.DATUM: NAD83 2009

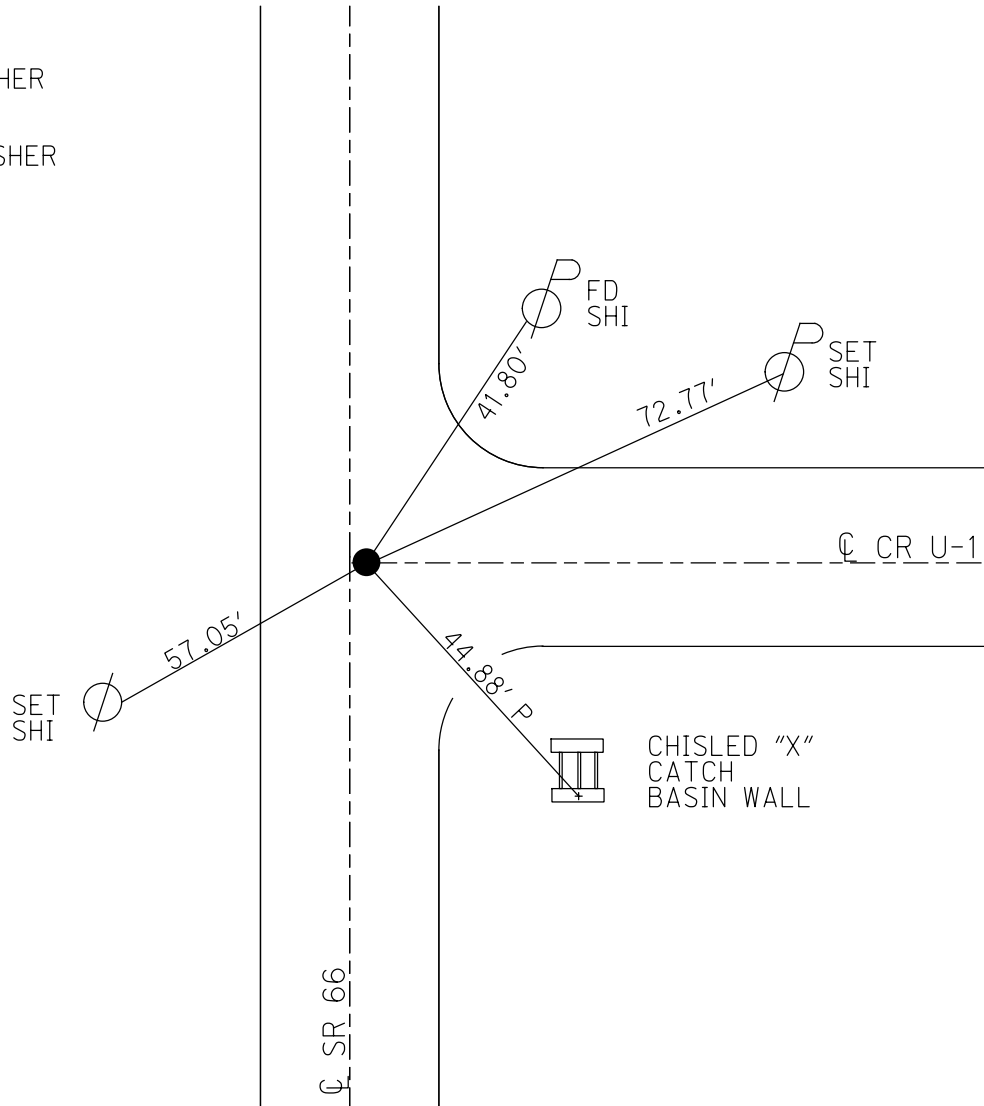
GEOID: NAVD88 2009

GRID: NORTHING: 659869.661

EASTING: 1473589.394



RECORD:
FD P.K./WASHER
HREF5
6/1/12, DCH
SET MAG/WASHER
10-31-12, DCH



O.D.O.T. DISTRICT 2 SURVEY OFFICE (USE ONLY)

PERSONNEL

REFERENCE NO. 4 A

SHEET 5 OF 7

NOTES HOMAN
H.C. ROUSOS
R.C. HOMAN
COUCHER
RHOADES

DATE 6-1-2012
WEATHER CLOUDY
TEMP. 55° F

ROUTE SR 66
COUNTY HENRY
TOWNSHIP RIDGEVILLE
SECTION 20-21-28-29
T 6 N R 5 E

TYPE MONUMENT PK/WASHER

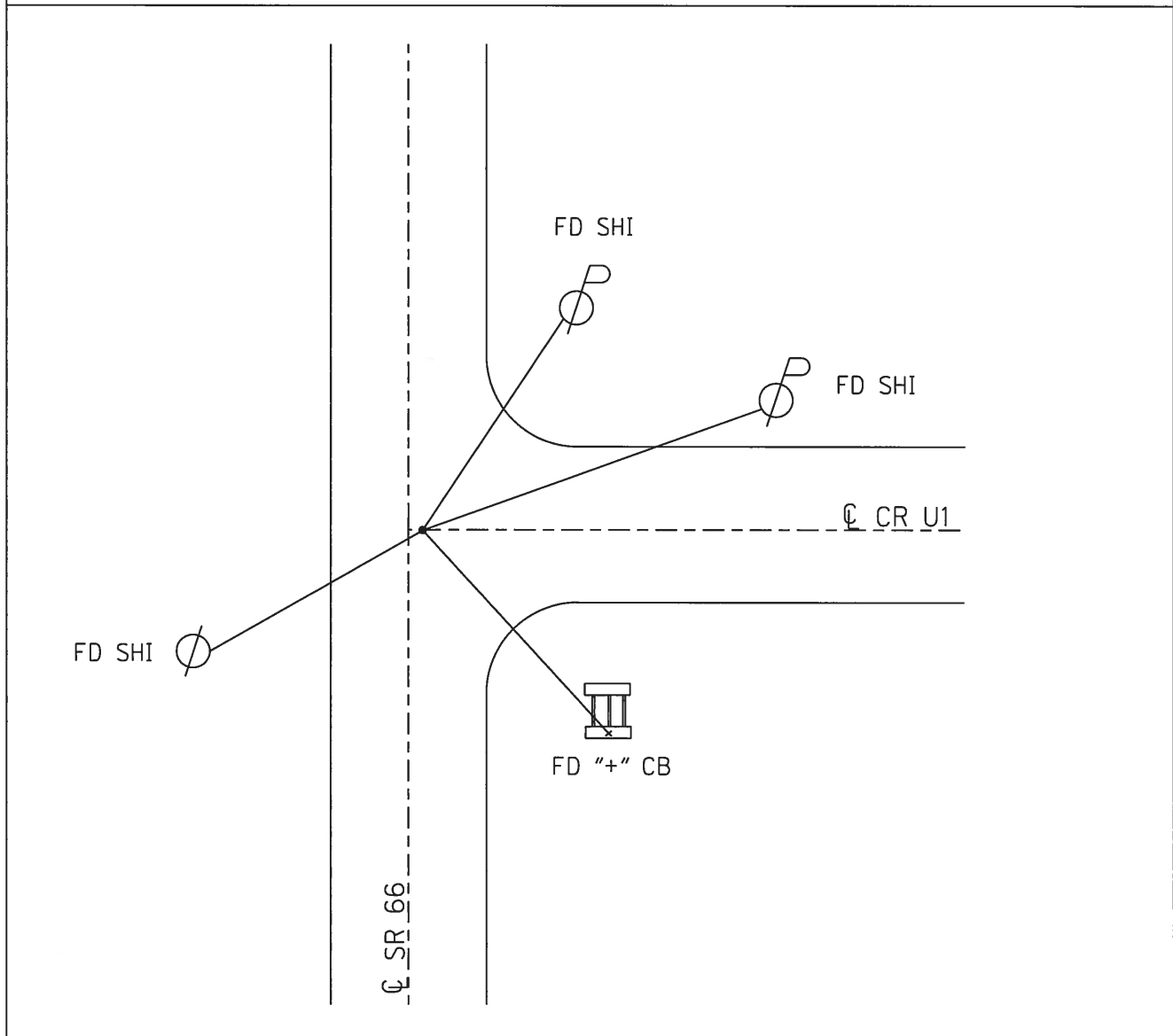
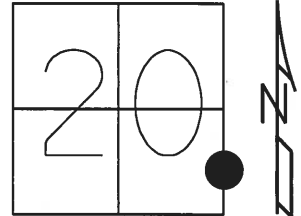
~~ON SURFACE~~ - BELOW 2"

~~LEFT~~ - Q PAV'T - RIGHT 0.7'

10.5 TO RT EDGE PAVEMENT

S.L.M. 204+63

GRID: NORTHING: 657272.205 EASTING: 1473569.252



O.D.O.T. DISTRICT 2 SURVEY OFFICE

PERSONNEL _____

REFERENCE NO. 4-A

SHEET 5 OF 8

NOTES SLOYALC

H.C. Rousos

R.C. CANTERBURY

DATE 8-14-95

WEATHER HOT

TEMP. +90°F

ROUTE S.R. 66

COUNTY HENRY

TOWNSHIP RIDGEVILLE

SECTION 20

T 6 N R 5 E

TYPE MONUMENT PK/WASHER ^{Reset}

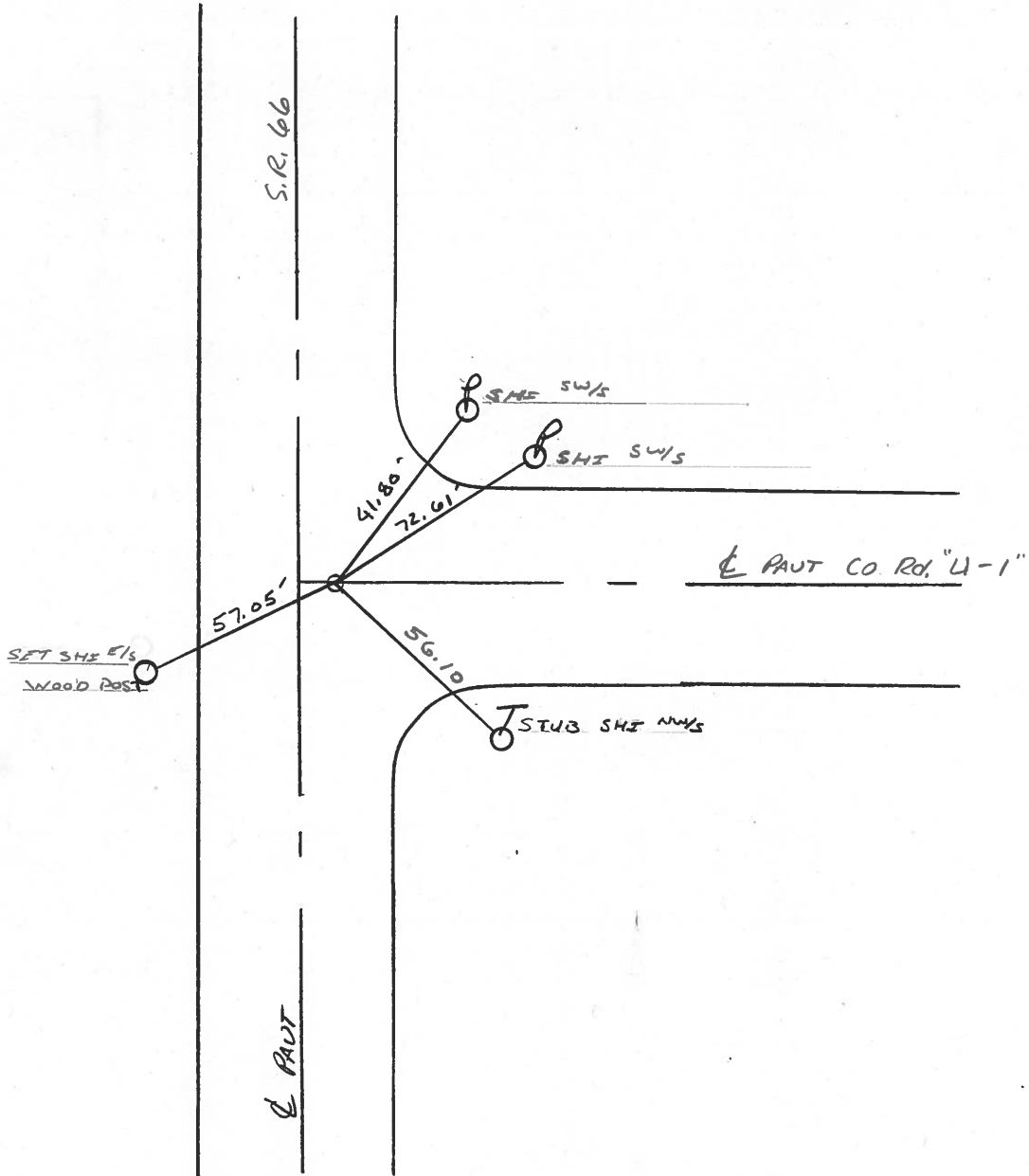
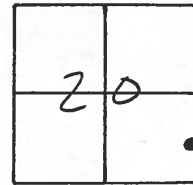
9-4-96

ON SURFACE ~~BELOW~~ ON SURFACE

LEFT-☉ PAVT. - RIGHT L2 RT & PAVT

12.9 TO LT EDGE PAVEMENT

S.L.M. 220+70



County HENRY S.R. 66

Township RIDGEVILLE

Section 20

T6N, R5E

Personnel HOFFMAN

LOENRKE H.C.

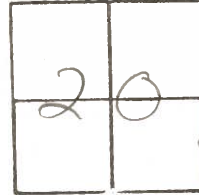
HOUSEHOLDER R.C.

4-A

Date 7-6-84

Weather P. CLEAR

Temp. 70°



Fd Hinge Nail @ surface - origin unknown -

S&M = 220 + 56

1.4' Rt & Post SR66

on & Post Rd "U-1"

SET PK/WASHER

10-22-84

