

LOCATION PLAN

HEN.-108 11.43
HENRY COUNTY
DEPARTMENT OF HIGHWAYS
STATE OF OHIO

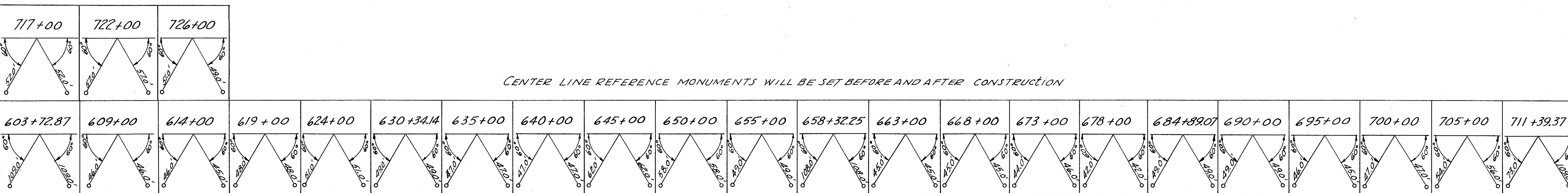
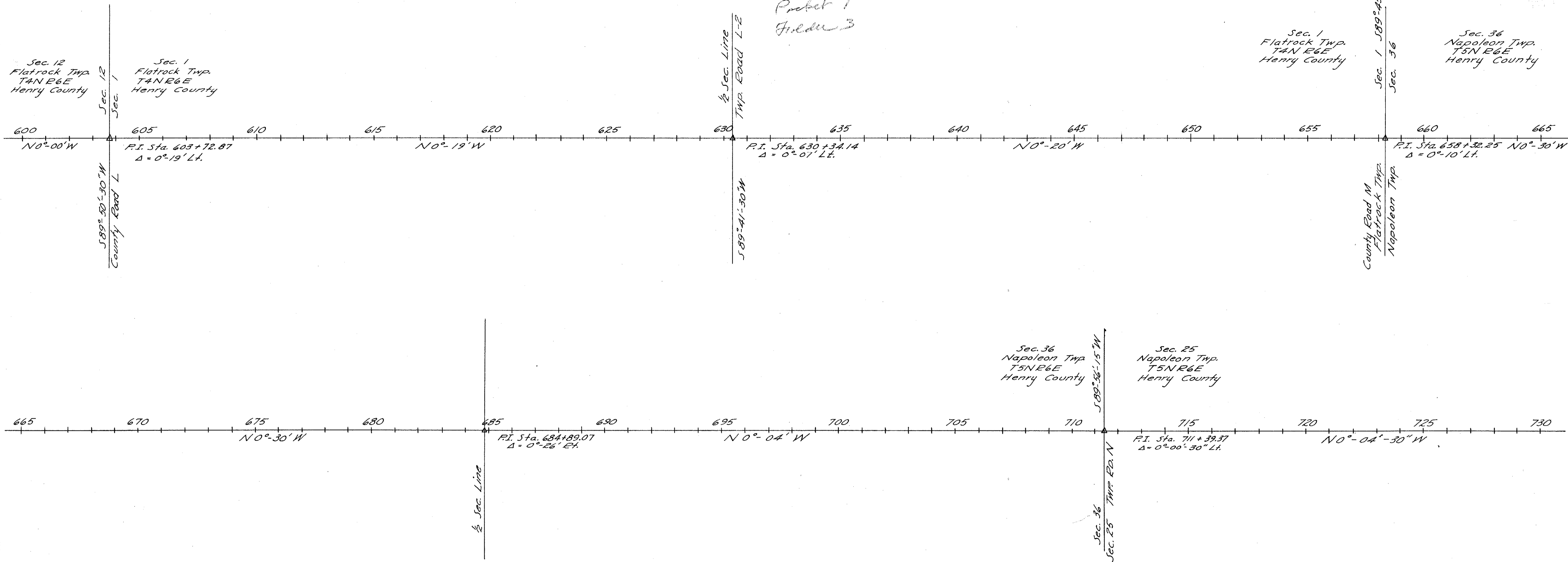
Vol: 4
Page: 120
Date: 6-23-56

DATE	BY	REVISION

I hereby certify this to be a true and correct plotting of the center line of survey as determined by the Ohio Department of Highways.
Date June 18, '56 George W. Deben
Division Deputy Director

1956
0 100 200 300 400 500
Scale 1" = 200'

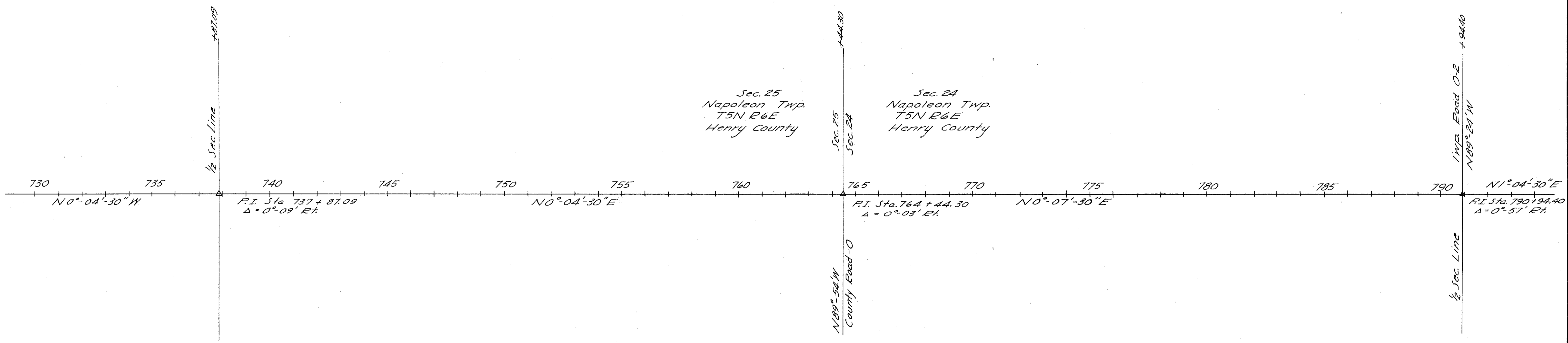
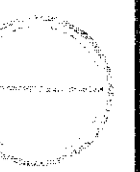
Prebet 7
Field 3



CENTER LINE REFERENCE MONUMENTS WILL BE SET BEFORE AND AFTER CONSTRUCTION

Scanned June 14, 197

R-2108 #3 B-29



CENTER LINE REFERENCE MONUMENTS WILL BE SET BEFORE AND AFTER CONSTRUCTION

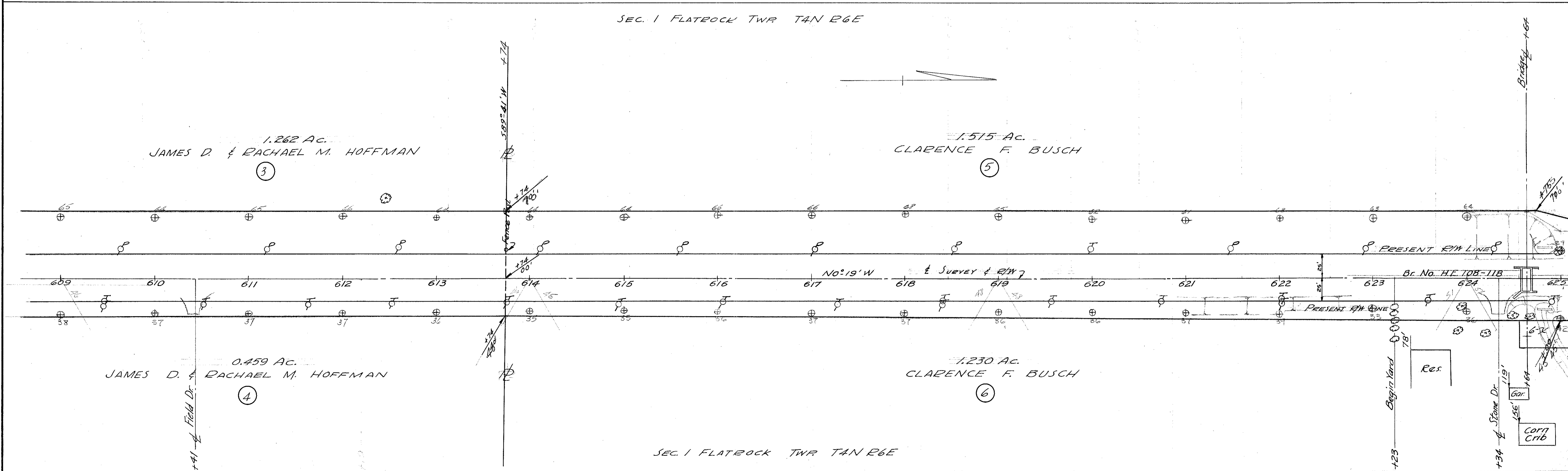
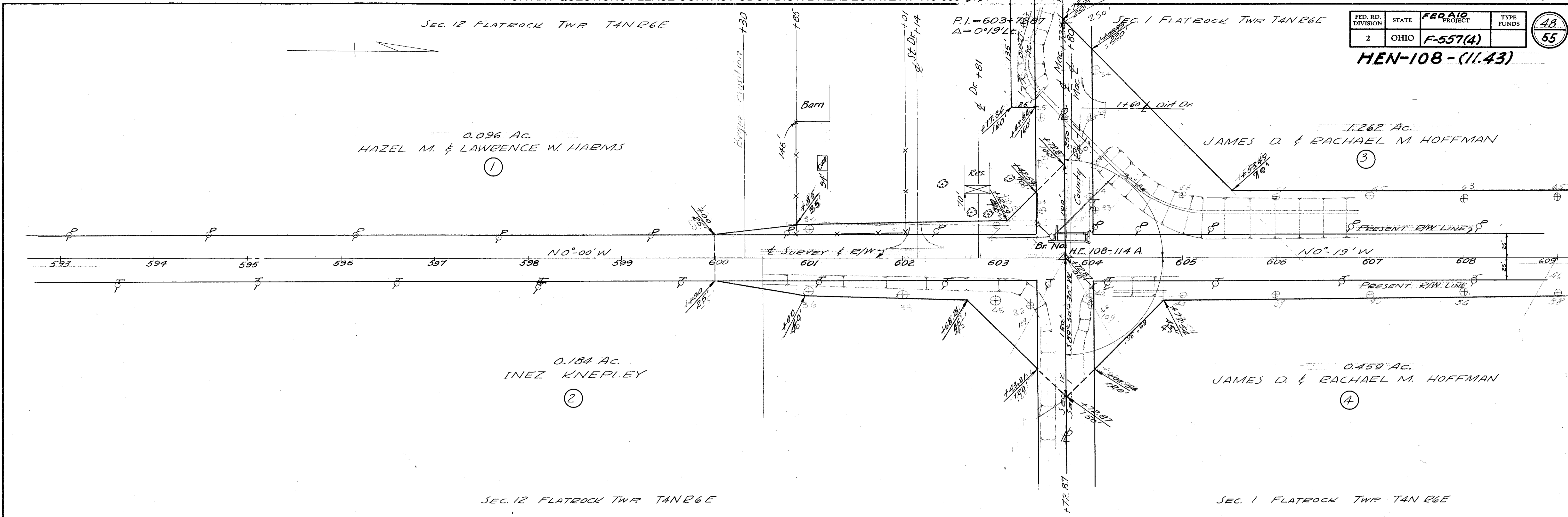
730+00	737+87.09	740+00	745+00	750+00	755+00	760+00	764+44.30	770+00	775+00	780+00	785+00	790+94.40

Scanned
June 1997

FED. RD. DIVISION	STATE	FED AID PROJECT	TYPE FUNDS
2	OHIO	F-557(4)	

48
55

HEN-108-(11.43)

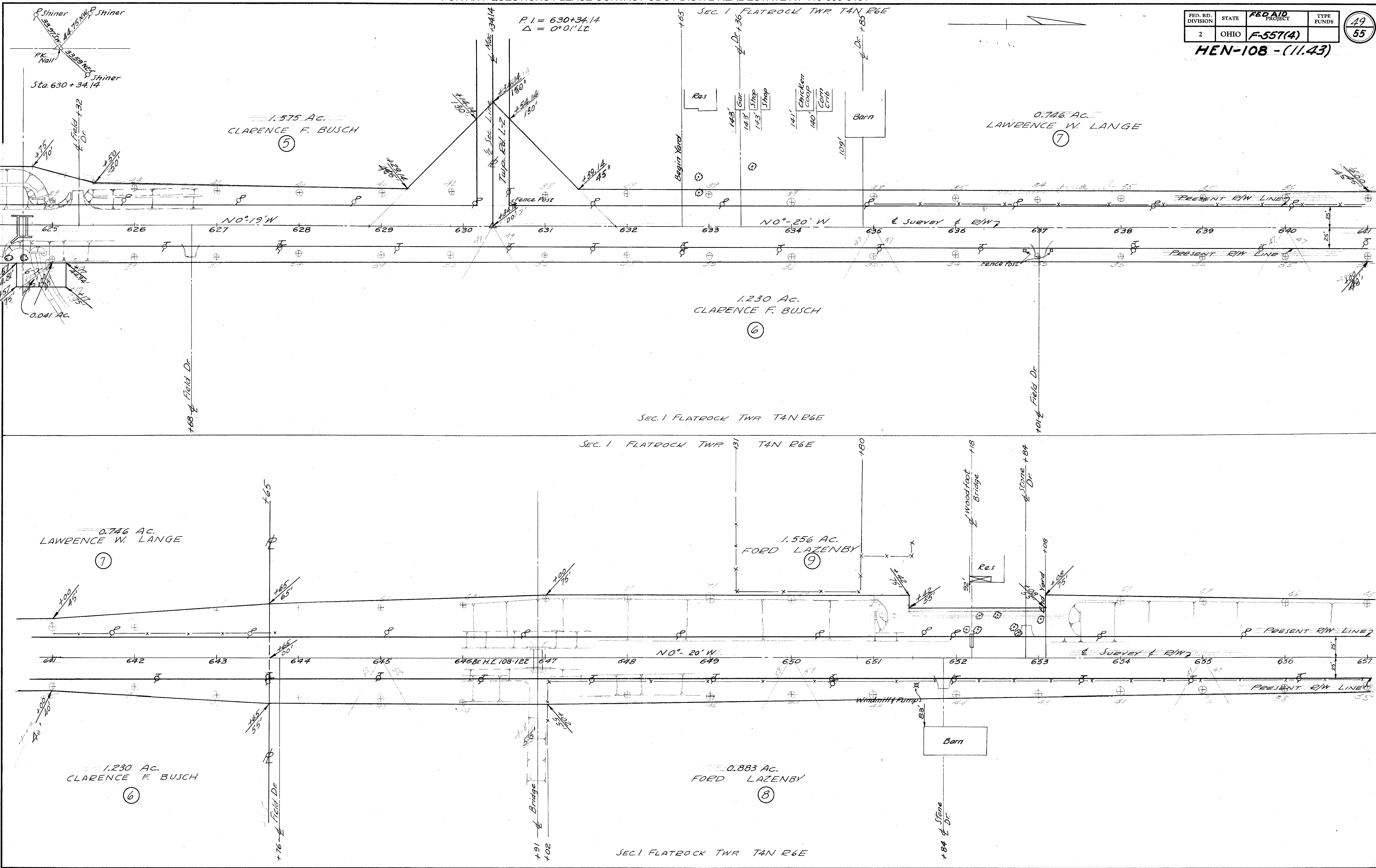


FED. RD. DIVISION	STATE	FED. AID PROJECT	TYPE FUNDS
2	OHIO	F-557(4)	

49
55

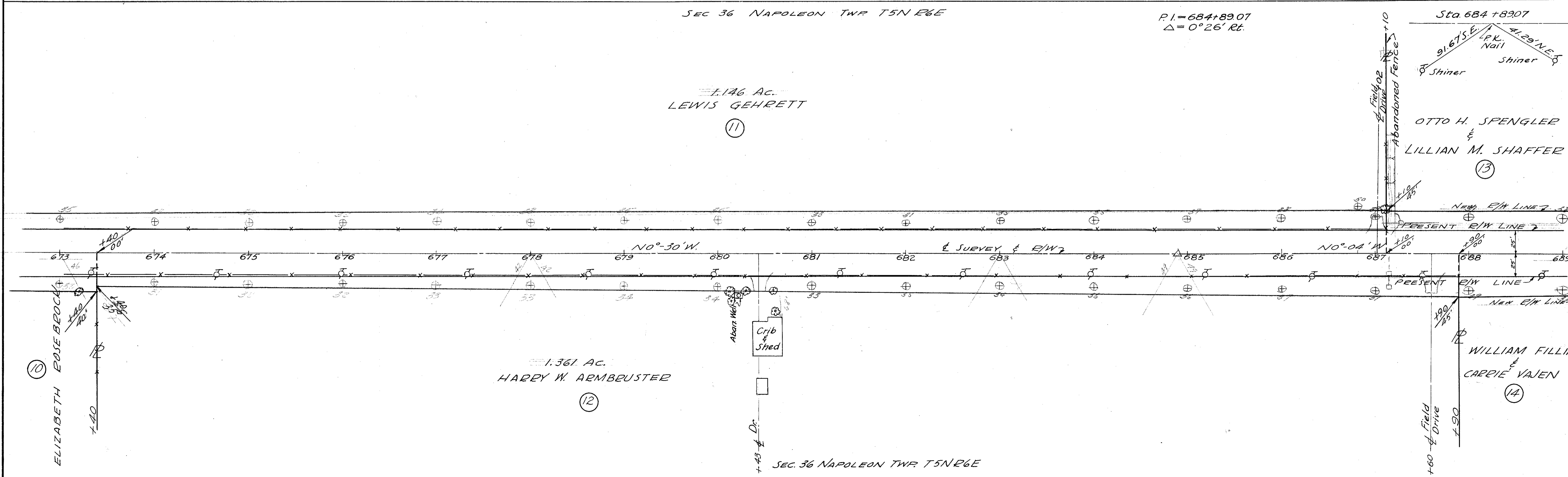
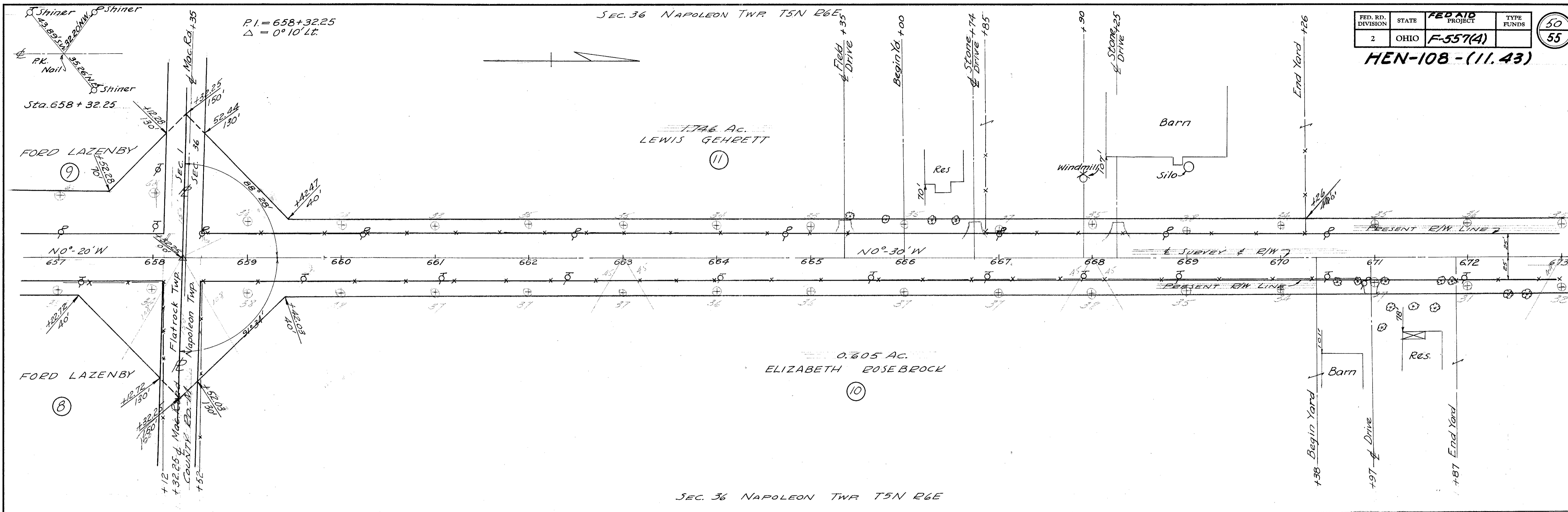
HEN-108-(11.43)

Scanned
June 1997



FED. RD. DIVISION	STATE	FED AID PROJECT	TYPE FUNDS
2	OHIO	F-557(4)	50 55

HEN-108-(11.43)



FED. RD. DIVISION	STATE	FED AID PROJECT	TYPE FUNDS
2	OHIO	F-557(4)	

51
55

HEN-108-(11.43)

OTTO H. SPENGLER & LILLIAN M. SHAFFER

(13)
1.191 Net Ac.

WILLIAM FILLING & CARRIE VAJEN

(14)
1.059 Net Ac.

SEC. 36 NAPOLEON TWP T5N R6E

SEC. 36 NAPOLEON TWP T5N R6E

P.I. = 711+39.37
 $\Delta = 0^{\circ}00'30''$ Lt.

SEC. 25 NAPOLEON TWP T5N R6E

OTTO H. SPENGLER & LILLIAN M. SHAFFER

INEZ LAIB

(15)
0.453 Net Ac.

WILLIAM FILLING & CARRIE VAJEN

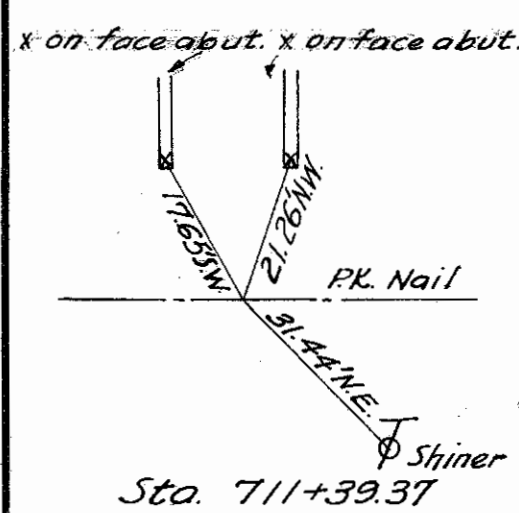
(14)

WILLIAM FILLING & CARRIE VAJEN

(16)
0.603 Net Ac.

SEC. 36 NAPOLEON TWP T5N R6E

SEC. 25 NAPOLEON TWP T5N R6E



Sta. 711+39.37



1.17'

1.17'

1.17'

1.17'

1.17'

1.17'

1.17'

1.17'

1.17'

1.17'

1.17'

1.17'

1.17'

1.17'

1.17'

1.17'

1.17'

1.17'

1.17'

1.17'

1.17'

1.17'

1.17'

1.17'

1.17'

1.17'

1.17'

1.17'

1.17'

1.17'

1.17'

1.17'

1.17'

1.17'

1.17'

1.17'

1.17'

1.17'

1.17'

1.17'

1.17'

1.17'

1.17'

1.17'

1.17'

1.17'

1.17'

1.17'

1.17'

1.17'

1.17'

1.17'

1.17'

1.17'

1.17'

1.17'

1.17'

1.17'

1.17'

1.17'

1.17'

1.17'

1.17'

1.17'

1.17'

1.17'

1.17'

SEC. 25 NAPOLEON TWP T5N R6E

FED. RD. DIVISION	STATE	FED AID PROJECT	TYPE FUNDS
2	OHIO	F-557(4)	

52
55

HEN-108-(11.43)

LAWRENCE FARISON ETAL
BERNARD FARISON-LIFE ESTATE

(17)

0.250 Net Ac.

RUTH HELLER HONECK

(18)

0.629 Net Ac.

SEC. 25 NAPOLEON TWP T5N R6E

SEC. 25 NAPOLEON TWP T5N R6E

BERNARD K. FARISON

(19)

0.194 Net Ac.

LAWRENCE J. VOCKE

(21)

0.685 Net Ac.

RUTH HELLER HONECK

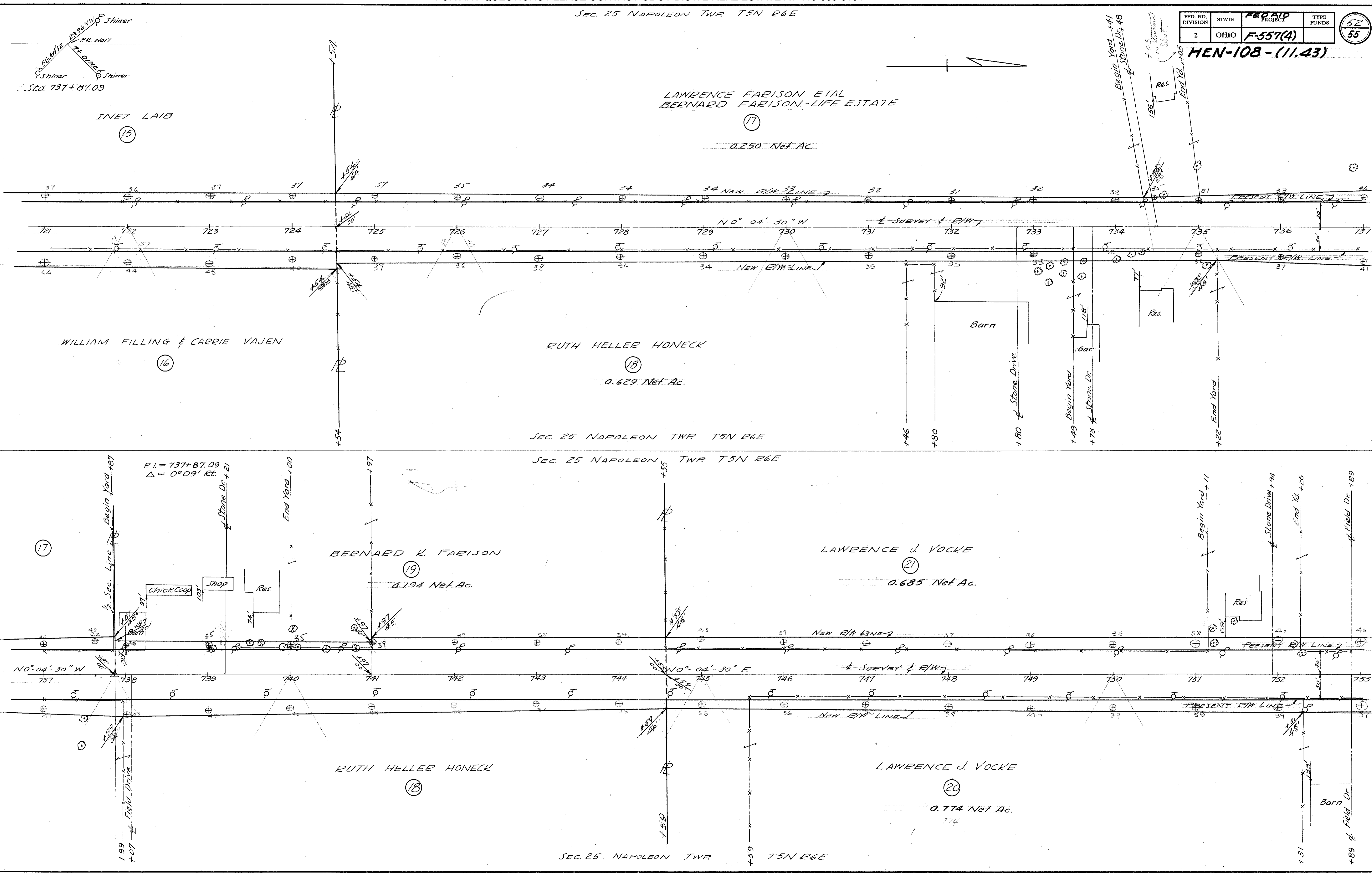
(18)

LAWRENCE J. VOCKE

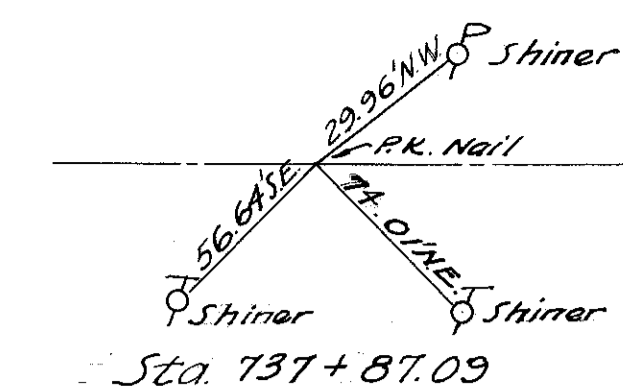
(20)

0.774 Net Ac.

SEC. 25 NAPOLEON TWP T5N R6E



Survey
June 1997



INEZ LAIB
(15)

WILLIAM FILLING & CARRIE VAJEN
(16)

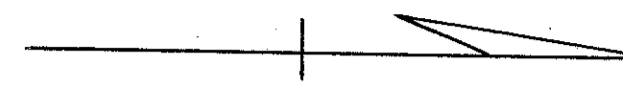
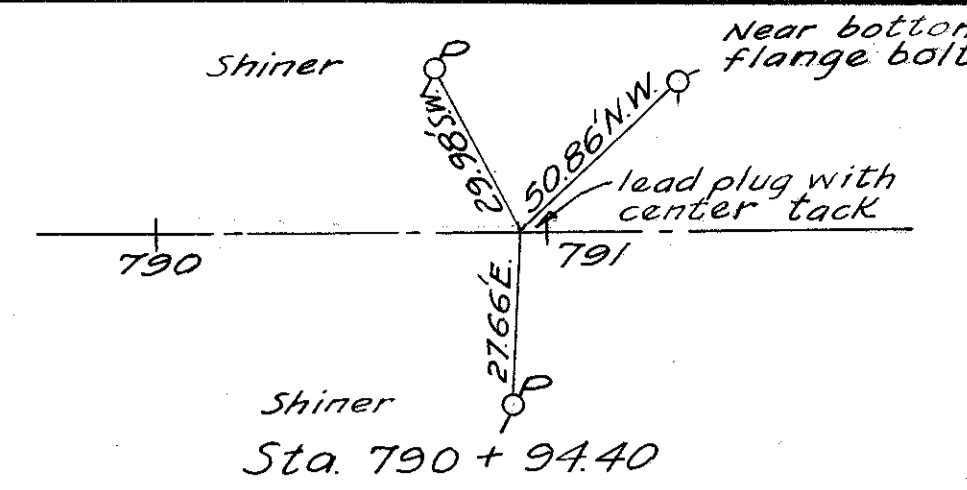
P.I. = 737+87.09
Δ = 0°09' Rt.

N0°04'30"W

N0°04'30"E

FED. RD. DIVISION	STATE	FED AID PROJECT	TYPE FUNDS
2	OHIO	F-557(4)	54 55

HEN-108-(11.43)



0.467 Net Ac.
 (24)
 ALTON J. BENIEN
 MARY C. BENIEN
 LIFE ESTATE

HENRY COUNTY AGRICULTURE SOCIETY
 Fair Ground

ARNOLD D. BADEN
 GEORGE J. FEHRING
 BISHOP OF TOLEDO
 0.004 Net Ac.

ARNOLD D. BADEN
 (26)
 0.196 Net Ac.

RAYMOND & HELEN COCKE

FANNIE CLYMER

BYRON RAJEY

LENA STEVENS ETAL

ARNOLD D. BADEN

