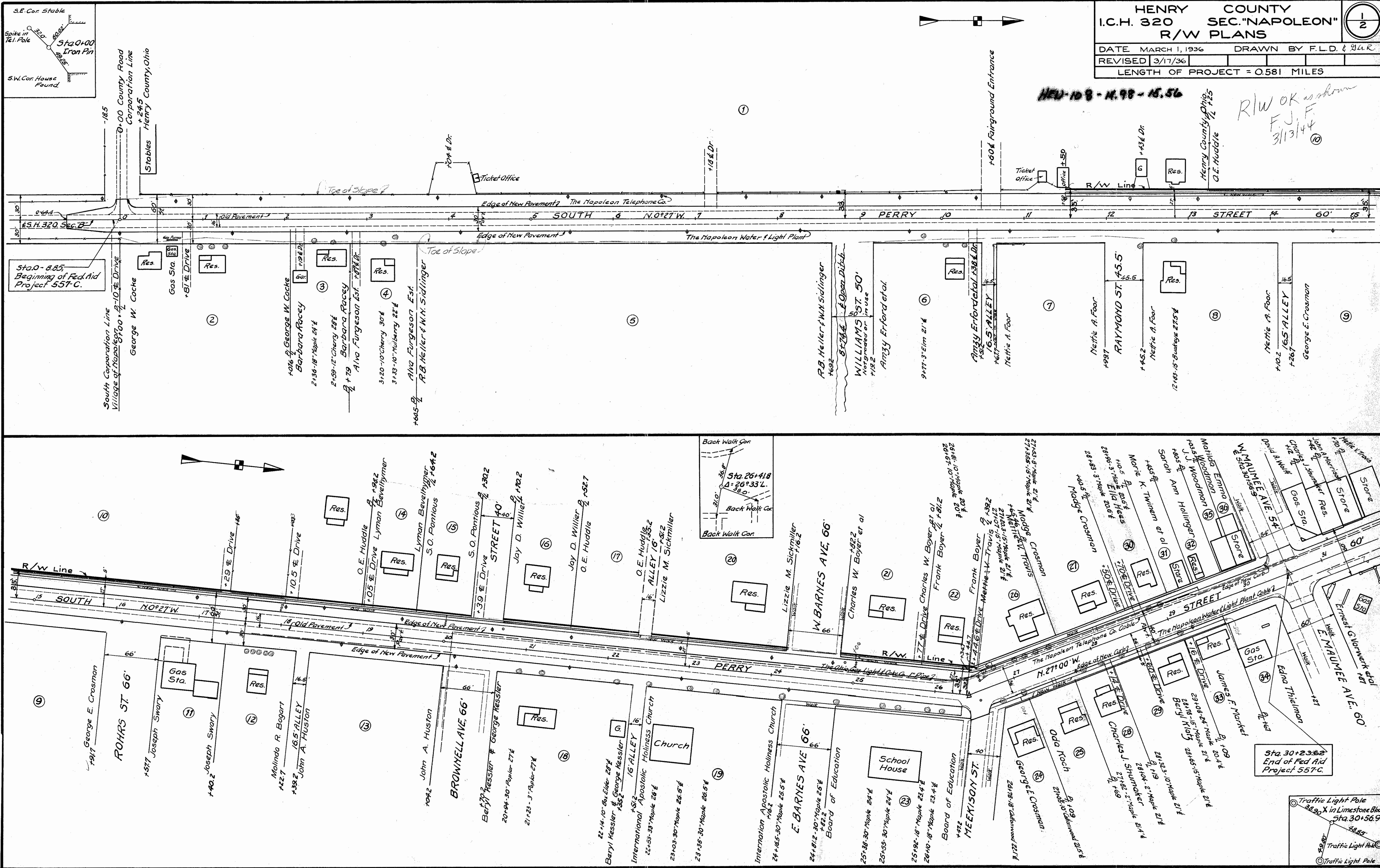
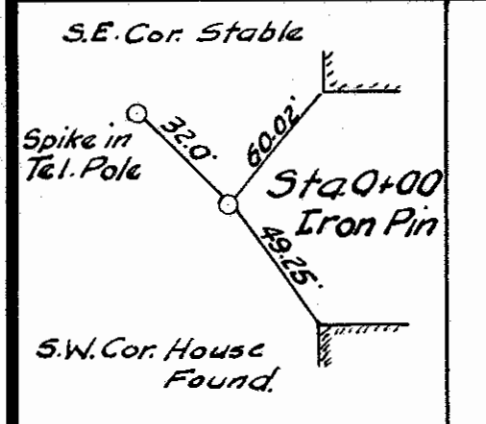


HENRY COUNTY
I.C.H. 320 SEC. "NAPOLEON"
R/W PLANS

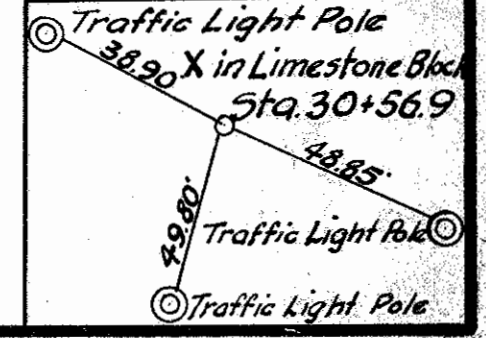
DATE MARCH 1, 1936 DRAWN BY F.L.D. & J.L.R.
 REVISED 3/17/36
 LENGTH OF PROJECT = 0.581 MILES



HEU-108 - H. 98 - 15.56
 R/W OK as shown
 F.J.F.
 3/13/44



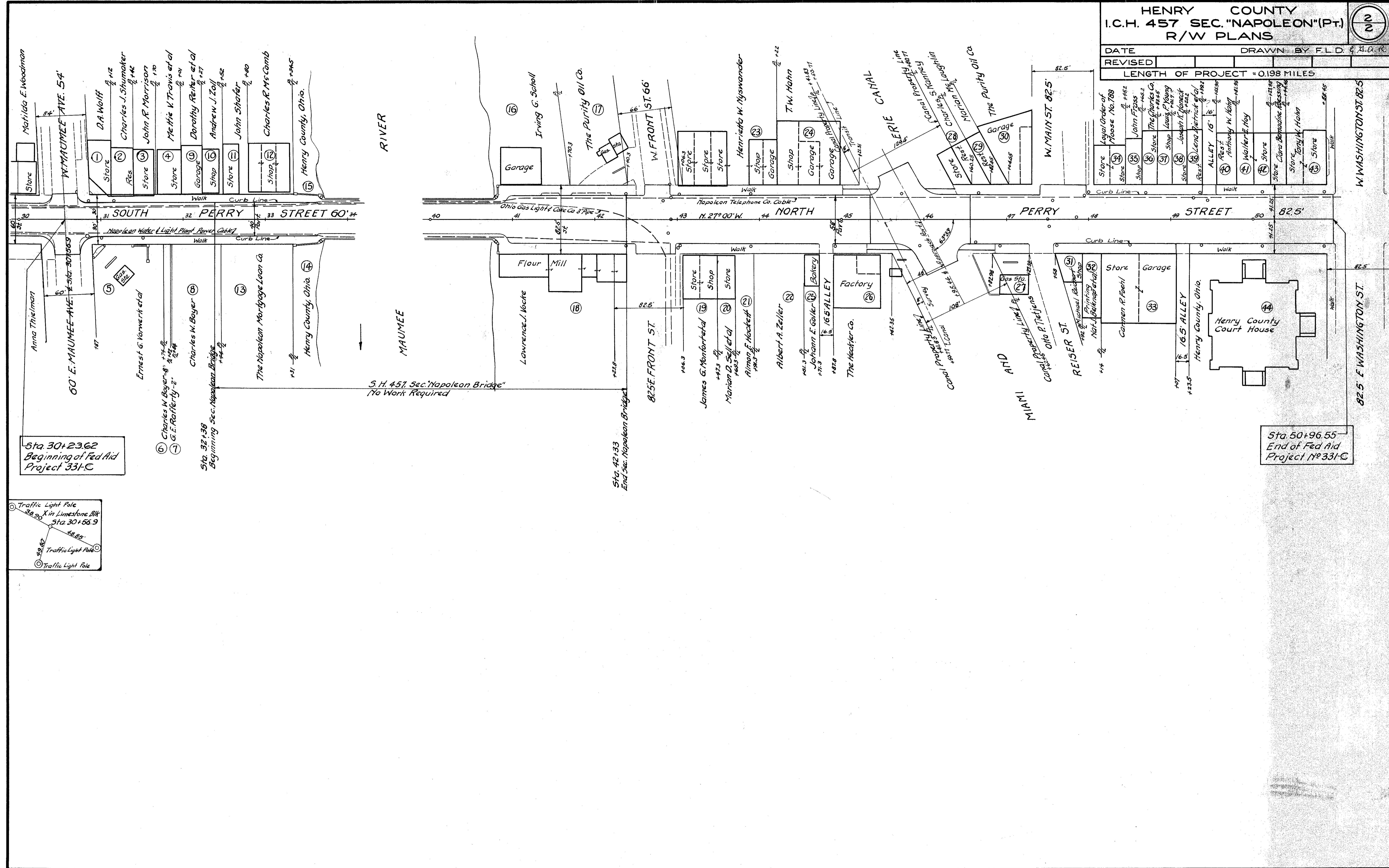
R-2108 4 5-10



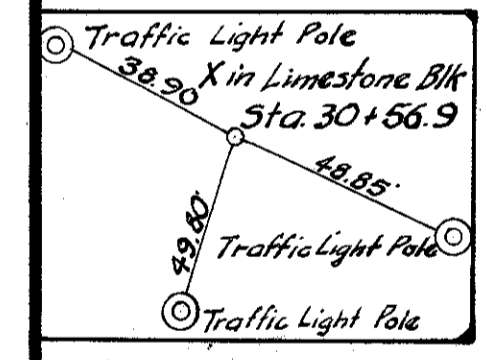
FOR ANY QUESTIONS PLEASE CONTACT ODOT DIST. 2 REAL ESTATE AT 419-353-8131

HENRY COUNTY
I.C.H. 457 SEC. "NAPOLEON" (PT.)
R/W PLANS

DATE	DRAWN BY F.L.D. & H.O.R.
REVISED	
LENGTH OF PROJECT = 0.198 MILES	



Sta. 30+23.62
 Beginning of Fed Aid
 Project 331-C



Sta. 50+96.55
 End of Fed Aid
 Project No 331-C