

FED. RD. DIST. NO.	STATE	FED. AID PROJ. NO.	FISCAL YEAR
10	OHIO	331-C	1936

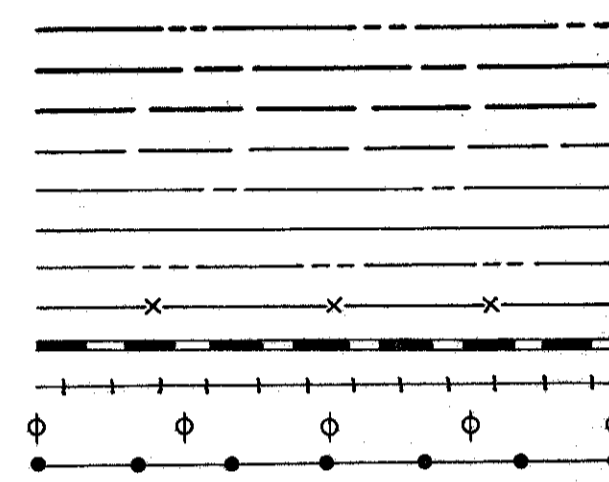
1/8

STATE OF OHIO DEPARTMENT OF HIGHWAYS TOLEDO~NAPOLEON ROAD S.H. No. 457 SEC. NAPOLEON (Pt.) HENRY COUNTY NAPOLEON VILLAGE

HENRY COUNTY
S.H. 457 SEC. NAPOLEON (Pt.)
PROPOSAL No. 1
For Proposal #2 See F.A.P. 337-C (1936)

CONVENTIONAL SIGNS

STATE LINE
COUNTY LINE
TOWNSHIP LINE
SECTION LINE
CENTER LINE
PROPERTY LINE
CITY OR VILLAGE LINE
FENCE LINE
STEAM RAILROAD
ELECTRIC RAILROAD
POLE LINE
GUARD RAIL
DRAIN PIPE : NEW
DRAIN PIPE : OLD

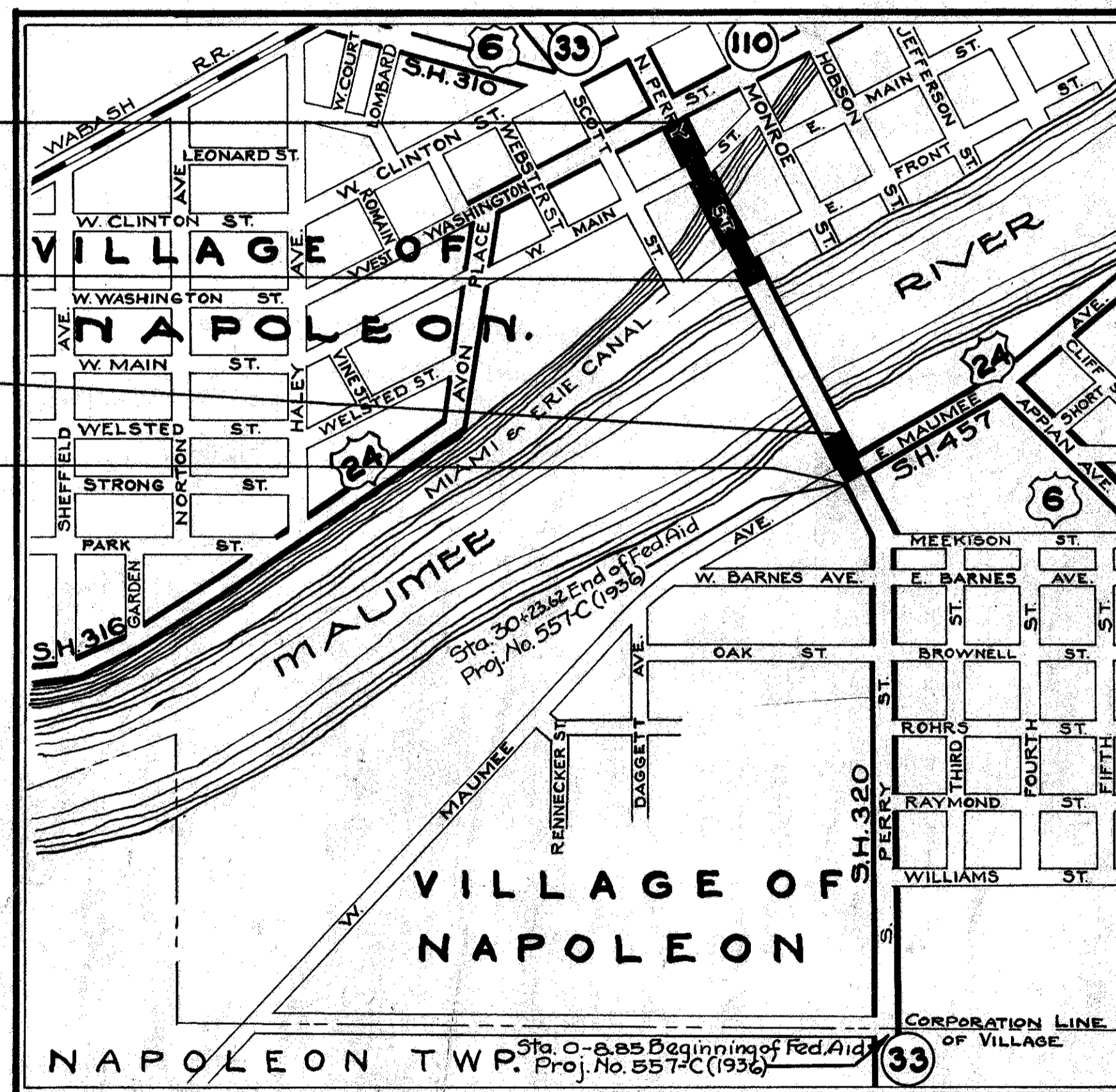


Sta. 50+96.55
End of F.A. Proj.
No. 331-C

Sta. 42+33
End of Sec.
"Napoleon Bridge"

Sta. 32+38
Beg. of Sec.
"Napoleon Bridge"

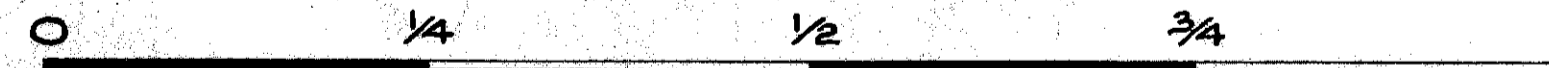
Sta. 30+23.62
Beg. of F.A. Proj.
No. 331-C
End of F.A.P.
No. 557-C



Delivery Point - Napoleon Average Haul .7 MILE

LOCATION PLAN

SCALE OF MILES



PORTION TO BE IMPROVED
ROUTES SHOWN THUS
STATE HIGHWAYS
OTHER HIGHWAYS

STANDARD CONSTRUCTION DRAWINGS

NUMBERS	DATE	NUMBERS	DATE
B-70-J	4-15-36		
I-8-C.B.No.5	11-12-35		
G-7-07	10-33		
B-T-50-70-71E.No.1	10-33		
T-70-J	4-15-36		
B-T-70-71E.No.1	10-33		
E-5	7-12-35		
I-1,2,3,4 & 5	1-1-36		
T-70-71E.No.1	10-33		

INDEX OF SHEETS

TITLE SHEET
TYPICAL SECTIONS
PLAN & PROFILE
CROSS SECTIONS
INTERSECTION DETAILS
COMPUTATIONS & SUMMARY

1
2-4
5
6
7
8

LINE DATA

BEGINNING OF F.A.P. 331-C STA. 30+23.62
END OF F.A.P. 331-C STA. 50+96.55
GROSS LENGTH OF F.A.P. 331-C 2072.93 LIN.FT.
ADDITIONS NONE
DEDUCTIONS - Sta. 32+38 to Sta. 42+33 (SH 457 Sec. Napoleon Bridge) 995.0 LIN.FT.
NET LENGTH OF F.A.P. 331-C - 1077.93 LIN.FT. OR .204 MILES.

SCALES

Plan 1" = 50'
Profile, Horizontal 1" = 50'
Profile, Vertical 1" = 2.5'
Cross-sections 1" = 5'

FILE No.	HENRY COUNTY
291	S.H. 457 SEC. NAPOLEON (Pt.)
DATE OF LETTING	
CONTRACT No.	

THE STANDARD SPECIFICATIONS OF THE STATE OF OHIO, DEPARTMENT OF HIGHWAYS, TOGETHER WITH "SPECIAL PROVISIONS FOR FEDERAL AID PROJECTS AND SUPPLEMENTAL SPECIFICATIONS Nos. 1-216, 51 & 56 (Rev 4-8-36) IN FORCE ON DATE OF CONTRACT WILL GOVERN THIS IMPROVEMENT.

I HEREBY APPROVE THESE PLANS AND DECLARE THAT THE MAKING OF THIS IMPROVEMENT WILL NOT REQUIRE THE CLOSING TO TRAFFIC OF THE HIGHWAY AND THAT THE NECESSARY RIGHT OF WAY HAS BEEN PROVIDED.

APPROVED _____
DATE _____ RESIDENT DISTRICT DEPUTY DIRECTOR

APPROVED *[Signature]*
DATE 1-27-36 RESIDENT DIVISION DEPUTY DIRECTOR

APPROVED _____
DATE _____ CHIEF ENGINEER BUREAU OF MAINTENANCE

APPROVED _____
DATE _____ CHIEF ENGINEER BUREAU OF BRIDGES

APPROVED *[Signature]* P.E. #83
DATE 4/18/36 CHIEF ENGINEER, LOCATION & DESIGN

APPROVED *[Signature]*
DATE 4-18-36 FIRST ASST. DIRECTOR AND CHIEF ENGINEER

APPROVED *[Signature]*
DATE 4-18-36 DIRECTOR OF HIGHWAYS

RECOMMENDED FOR APPROVAL _____
DATE _____ DISTRICT ENGINEER BUREAU OF PUBLIC ROADS

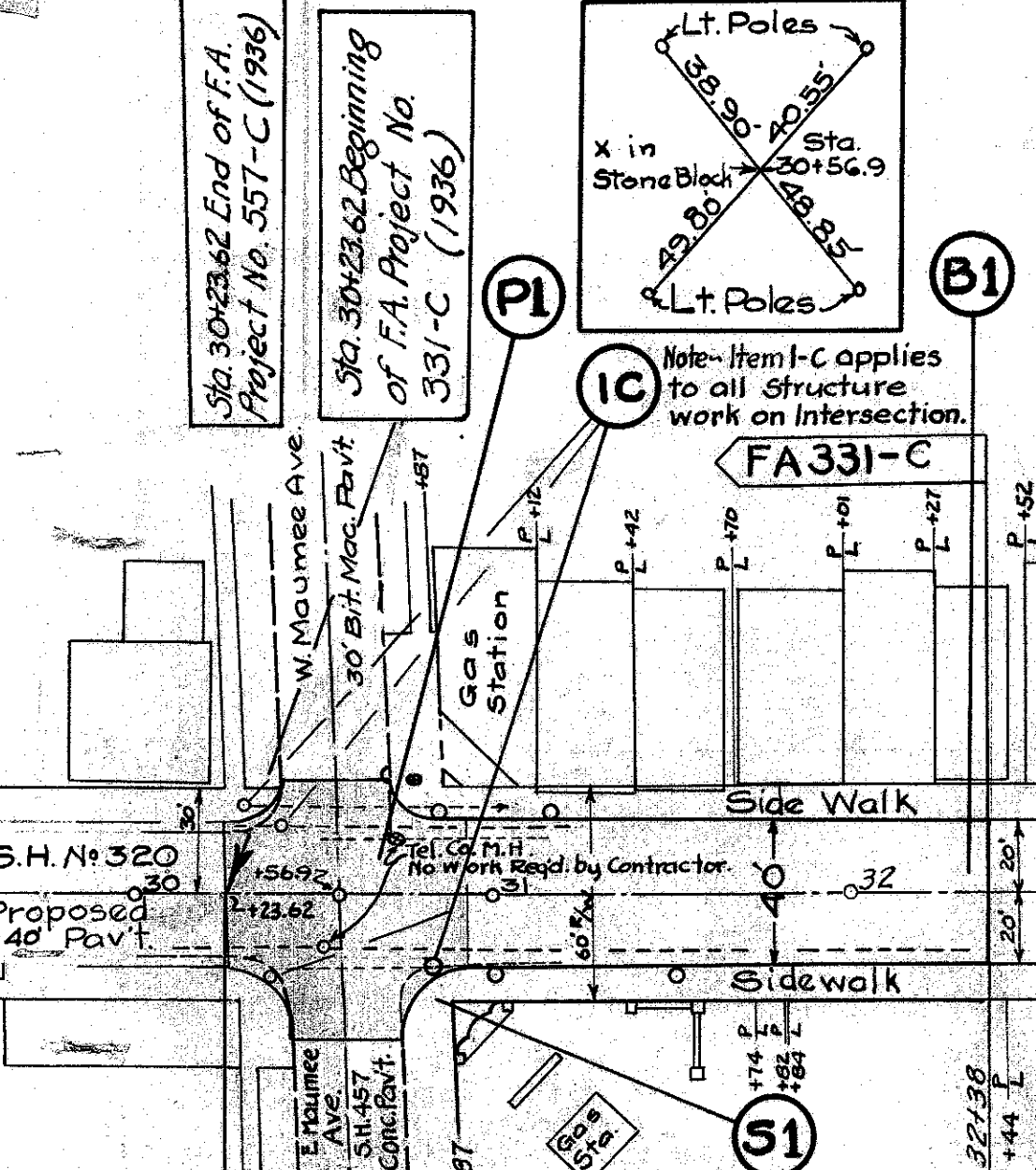
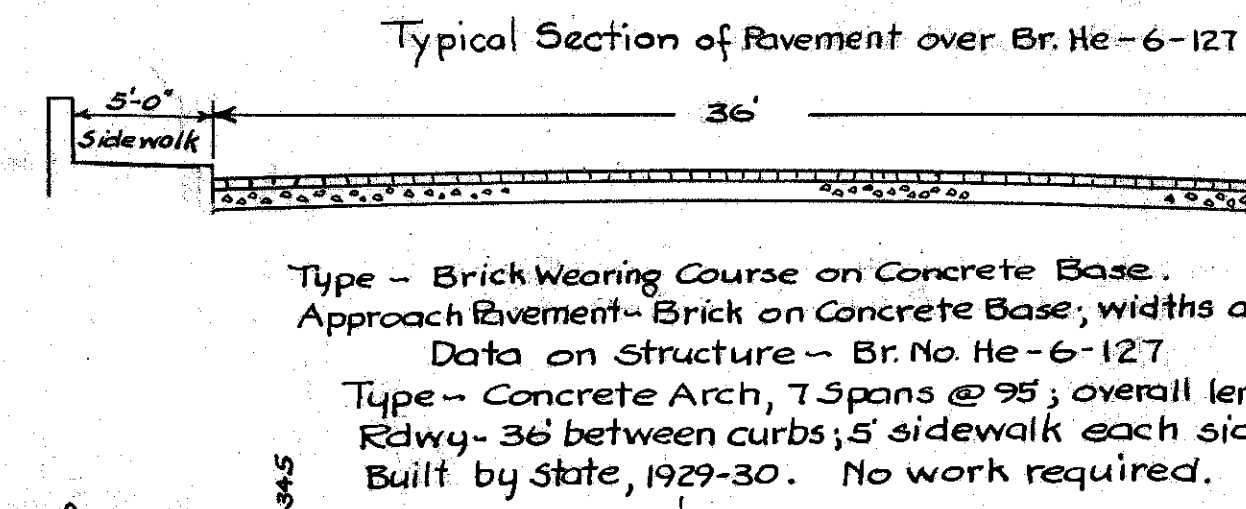
RECOMMENDED FOR APPROVAL _____
DATE _____ CHIEF ENGINEER BUREAU OF PUBLIC ROADS

APPROVED _____
DATE _____ CHIEF OF BUREAU

CONSTRUCTION BUREAU
JUN 24 1936
GROUND PHOTOLAB

FED. AID DIST. NO.	STATE	FED. AID PROJ. NO.	FISCAL YEAR
10	OHIO	331-C	1936

S.H. NO. 457- SEC. "NAPOLEON (PART)"
HENRY COUNTY
FA331-C



ITEM NO.	STATION	MANHOLE CASTINGS RESET EACH	CATCH BASIN CASTINGS RESET EACH	DISTANCE RT. OR LT. FT.
1-C	30+81			23R
	30+31			21'L
	30+40.5			18.5'L
	30+41.5			18.8'R
4-C	42+93			E
5-C	43+05			29'R
6-C	43+09			29'L
7-C	47+50			E
8-C	47+51			9'R
9-C	47+55			23'L
10-C	47+84			2'L
2-C	42+84			23'L
11-C	48+10			29'R
12-C	48+10			29'L
13-C	49+28			26'L
14-C	49+45			23'L
15-C	46+62			23.5'R
3-C	42+90			16'R
58' Total		9	6	
40' Total		1	3	
Project Total		10	9	

NOTE - Markers to be furnished and erected by the State before acceptance of this improvement.

S.H. 457 Sec. "Napoleon" (Bridge and Approaches) Sta. 32+38 to Sta. 42+33 Length 995.0 Lin. Ft. Bridge and Brick Approach Pavement in good condition - No work required.

Item No.	Station From	Station To	Right or Left	Width	Material	Qty.	Unit	Total
S-1	30+23.62	30+23.67	R	72.6	Concrete Sidewalk - 4' thick, 10' wide			
S-2	45+01.5	45+21.5	L	200	Sandstone Curb (Straight)			
S-3	45+31	45+66.0	R	350	5' x 24" Reset			
S-4	46+39.4	46+65	R	25.6	5' x 18" New			
S-5	46+60.8	46+83.8	R	25.0	Various Sta.			
				100	For L	500		100.00
				500	For R	500		181.7
Total				826		1300		334.40

B.M. Elev. 671.615 Sta. 30+30 - 36' L. & on N.E. Nut. - Top of Hydrant

Note - Item S-1 includes all new sidewalk on Intersection P-1, as detailed on Sheet 8

Note - The Curb Items listed for "Various Sta." shall be used as directed by Engineer in charge. The unit price bid per lin. ft. for new 5' x 18" Curb, complete in place, includes payment for removal and disposal of the existing 5' x 24" Stone Curb where the new curb is used to replace the old.

Item No.	Station From	Station To	Sq. Yds. (40 Pavt)	Sq. Yds. (58 Pavt)	Total
B-1	32+18	32+38	80		80
B-2	42+33	43+00	402		402
B-3	50+76.55	50+96.55	120		120
Various Sta.			50	400	450
Total			130	922	1052

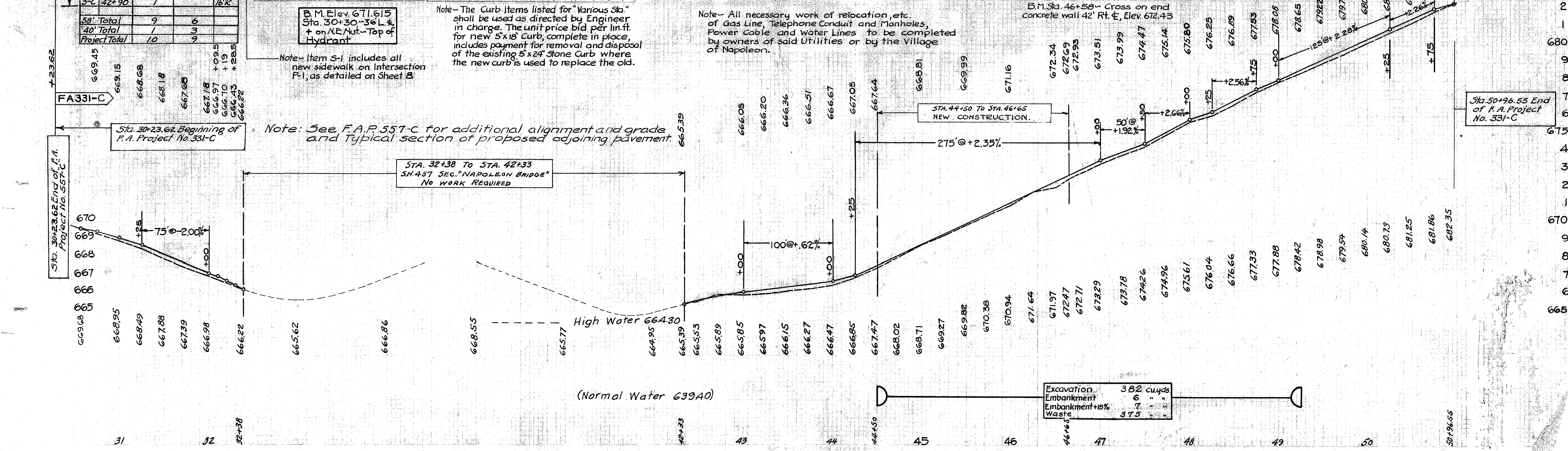
Item No.	Station From	Station To	10' Wide Sq. Ft.
A-1	45+21.5 Lt.	46+39.4 Lt.	1119
A-2	45+66.0 Rt.	46+85.8 Rt.	948
Total			2127

Note - All necessary work of relocation, etc. of Gas Line, Telephone Conduit and Manholes, Power Cable and Water Lines to be completed by owners of said Utilities or by the Village of Napoleon.

B.M. Sta. 46+58 - Cross on end concrete wall 42' Rt. E. Elev. 672.43

Note: See F.A.P. 557-C for additional alignment and grade and Typical section of proposed adjoining pavement.

STA. 32+38 TO STA. 42+33 S.H. 457 SEC. "NAPOLEON BRIDGE" NO WORK REQUIRED



Excavation	382 cu yds
Embankment	6 "
Embankment +15%	7 "
Waste	37.5 "

NOTE - Markers to be furnished and erected by the State before acceptance of this improvement.

Sta. 50+96.55 End of F.A. Project No. 331-C

Note - N. Perry Street is tangent for approximately 2000 lin. ft. beyond end of Project.