

O.D.O.T. DISTRICT 2 SURVEY OFFICE (USE ONLY)

PERSONNEL

REFERENCE NO. 2

SHEET 4 OF 21

NOTES GARRETT

DATE 7/7/20

ROUTE SR 108

H.C. AUBLE

WEATHER SUNNY

COUNTY HENRY

R.C. MAHLER

TEMP. 79°

TOWNSHIP PLEASANT

DWG BY NIESE PID 95739

SECTION 35

T 3 N R 6 E

TYPE MONUMENT SM R.R. SPIKE

~~ON SURFACE~~ - BELOW 3"

OFFSET \odot PAVEMENT 8.4' LT : ~~RT~~

1.0' TO LT EDGE PAVEMENT

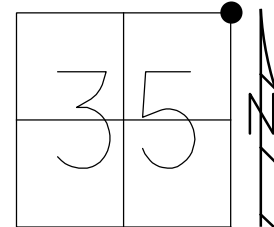
STATION: 52+85.76

HORZ. DATUM: NAD83 (2011)

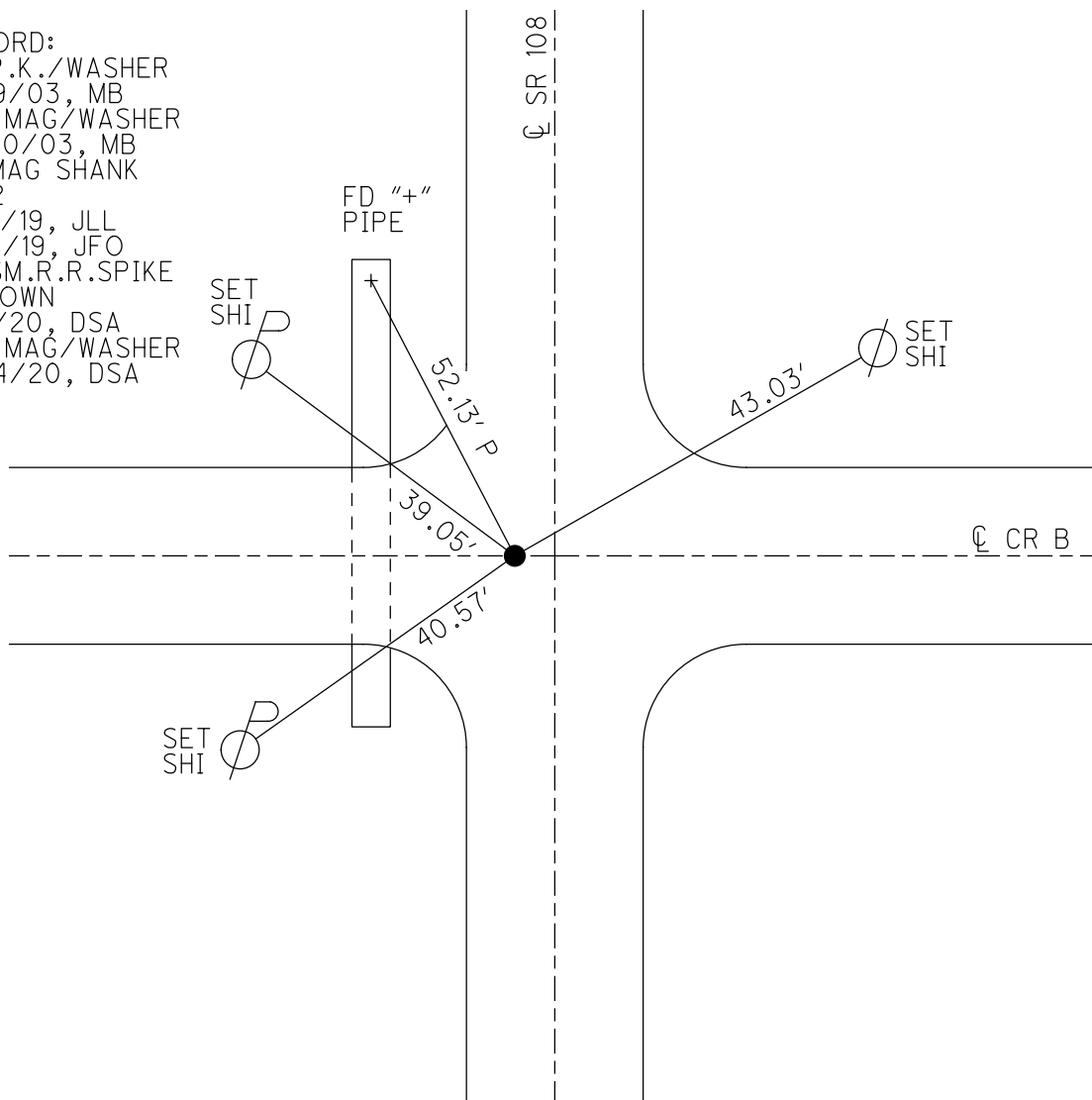
GEOID: NAVD88 2012A

GRID: NORTHING: 555873.073

EASTING: 1519310.038



RECORD:
 FD P.K./WASHER
 4/29/03, MB
 SET MAG/WASHER
 10/30/03, MB
 FD MAG SHANK
 REF2
 2/14/19, JLL
 10/4/19, JFO
 FD SM.R.R. SPIKE
 3" DOWN
 7/7/20, DSA
 SET MAG/WASHER
 12/14/20, DSA



O.D.O.T. DISTRICT 2 SURVEY OFFICE

PERSONNEL

REFERENCE NO. 2

SHEET 3 OF 20

NOTES BRUMBAUGH

H.C. BARNHISEL

R.C. GLASS

RYALL

DRAWN BY: CANTERBURY

DATE 4-29-03

WEATHER CLEAR

TEMP. +50

ROUTE S.R. 108

COUNTY HENRY

TOWNSHIP PLEASANT

SECTION 35

T 3 N R 6 E

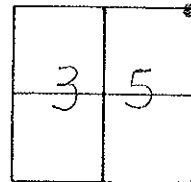
TYPE MONUMENT P.K. / WASHER

ON SURFACE - BELOW SURFACE

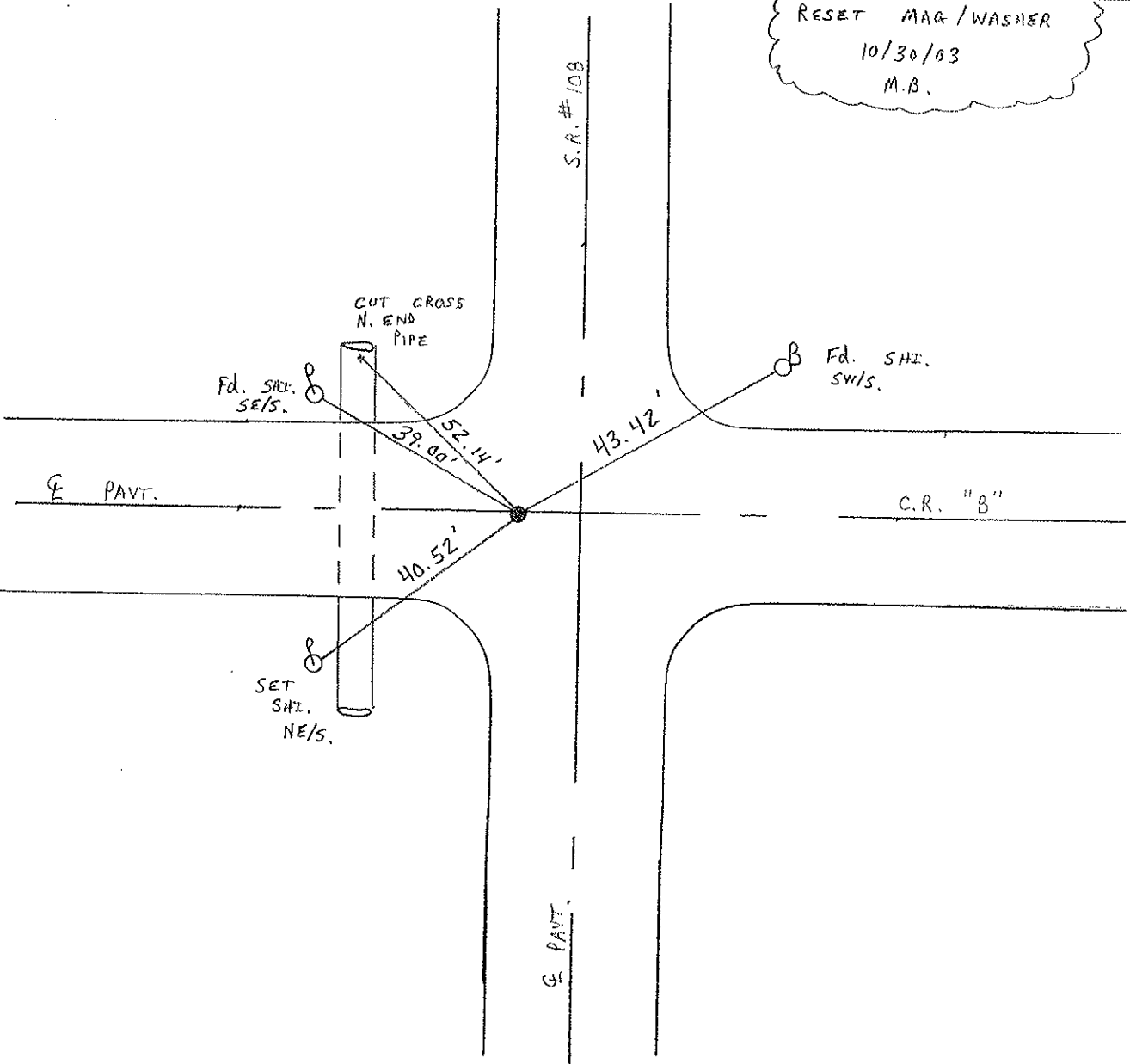
LEFT - CL PAV'T. - RIGHT 8.1' LT.

1.0 TO LT. EDGE PAVEMENT

S.L.M. 52 + 92



RESET MAG / WASHER
 10/30/03
 M.B.



O.D.O.T. DISTRICT 2 SURVEY OFFICE

PERSONNEL

REFERENCE NO. 2

SHEET 3 OF 54

NOTES LOEHRKE

H.C. CURTIS

DATE 7-21-92

ROUTE S.R. 108

R.C. ROMERO

WEATHER Part Cloudy

COUNTY HENRY

FALKOWSKI

TEMP. +70

TOWNSHIP PLEASANT

SECTION 35

Reset 9-29-92

T 3 N R 6 E

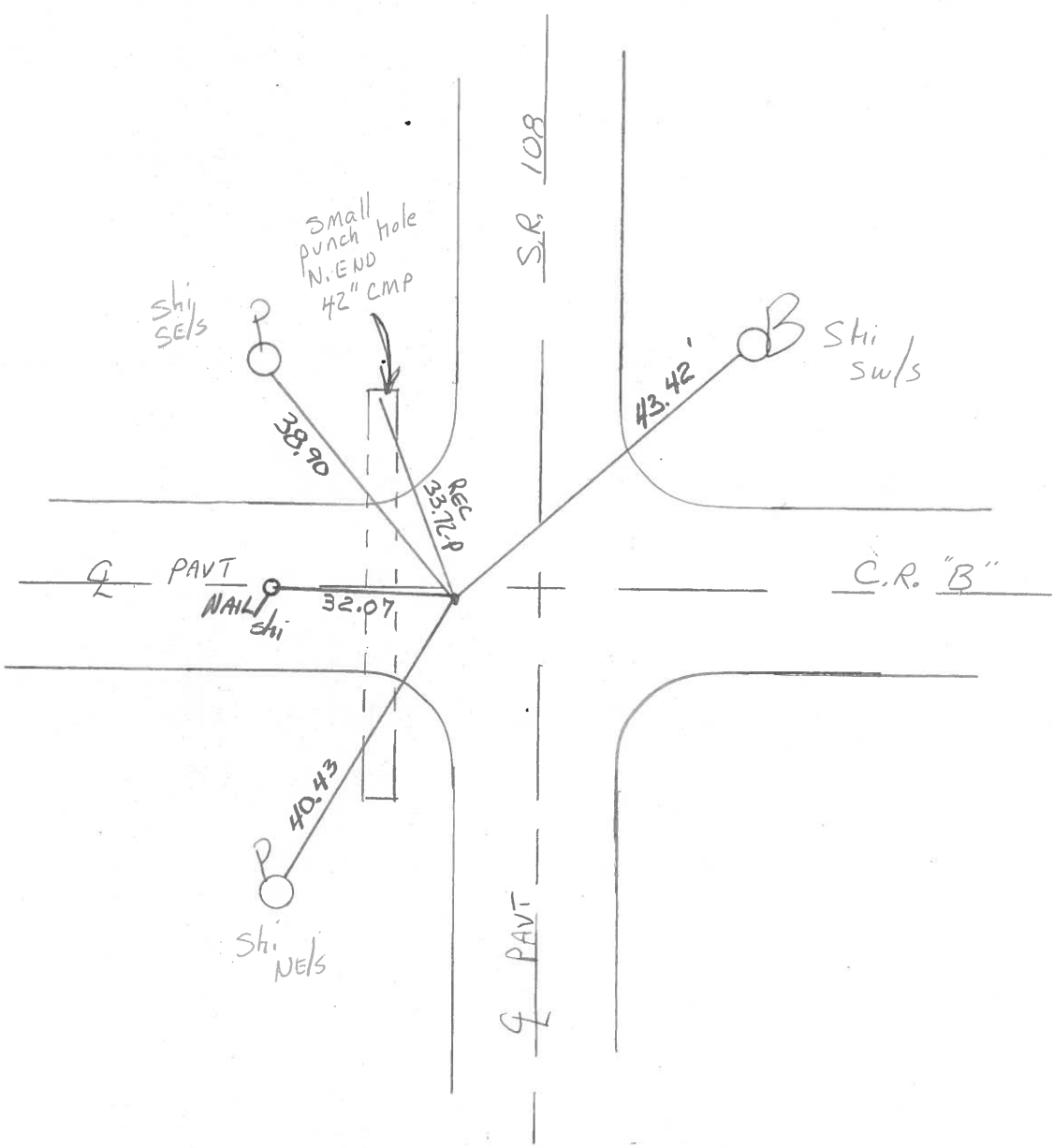
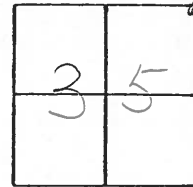
TYPE MONUMENT P.K. / WASHER

ON SURFACE - BELOW Yes

LEFT - PAV'T. - RIGHT 8.2

1.0 TO Lt EDGE PAVEMENT

S.L.M. 52+92



County Henry S.R. 108

Township Pleasant

Section NE. Cor Sec. 35

T3N, R6E

Personnel Bannhiser

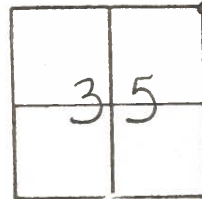
Loehrke H.C.

Householder R.C.

Date 5-2-84

Weather Clear

Temp. +58°



2

FD. sm RR spk
@ surface

SLM: 52+84

1.0 Rt of Lt EP.

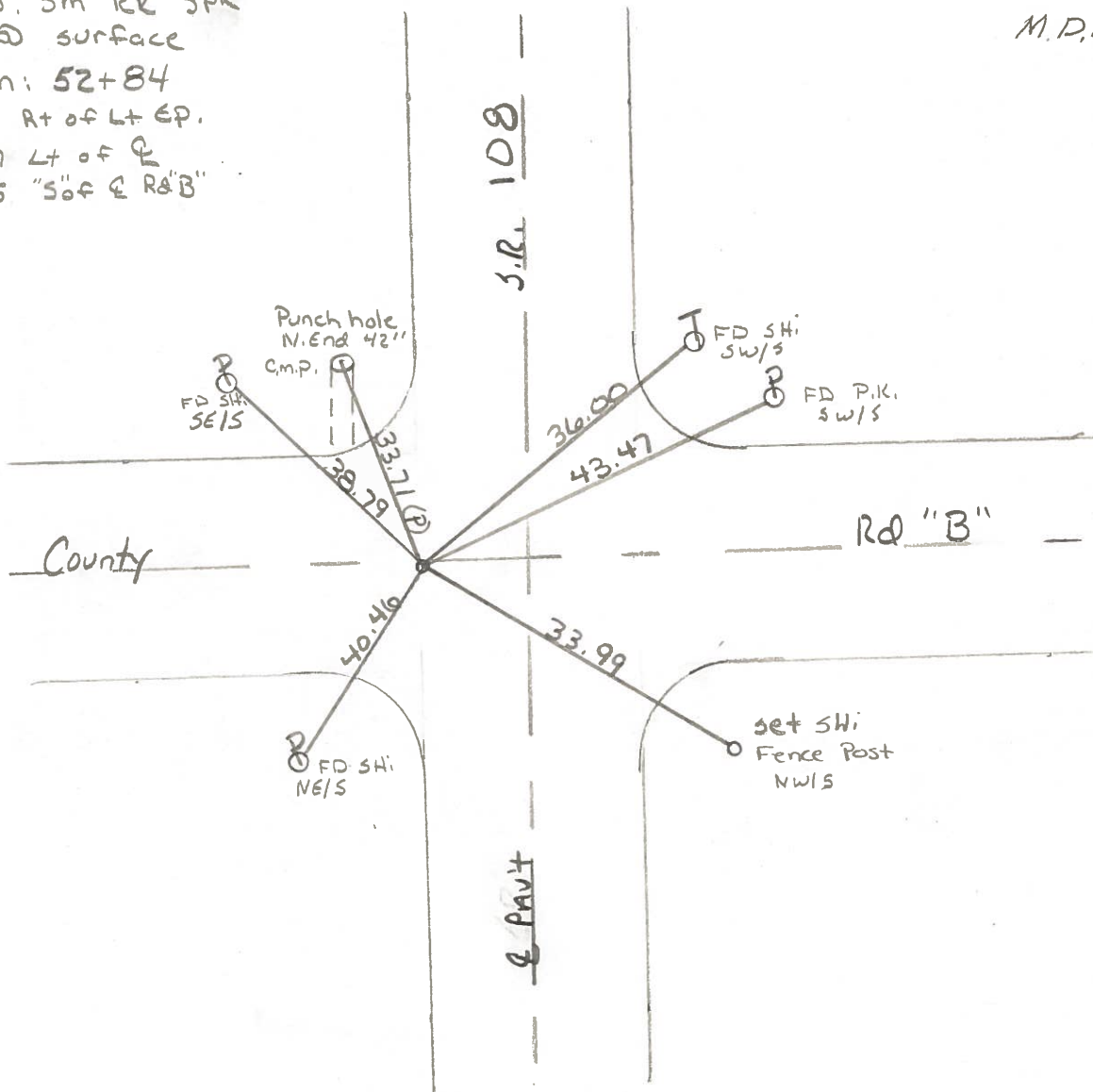
8.7 Lt of R

0.5 "SoF E Rd B"

8-20-84

Set PK./WASHER

M.D.B.



Q.D.O.T. DISTRICT 2 SURVEY OFFICE

Sht. 3 of 11
S.R. 108

County HENRY

Date 8-2-78

Township PLEASANT

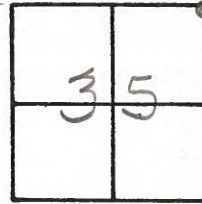
Weather PT. CLOUDY

Section N.E. COR. SEC. 35

Temp. +76°

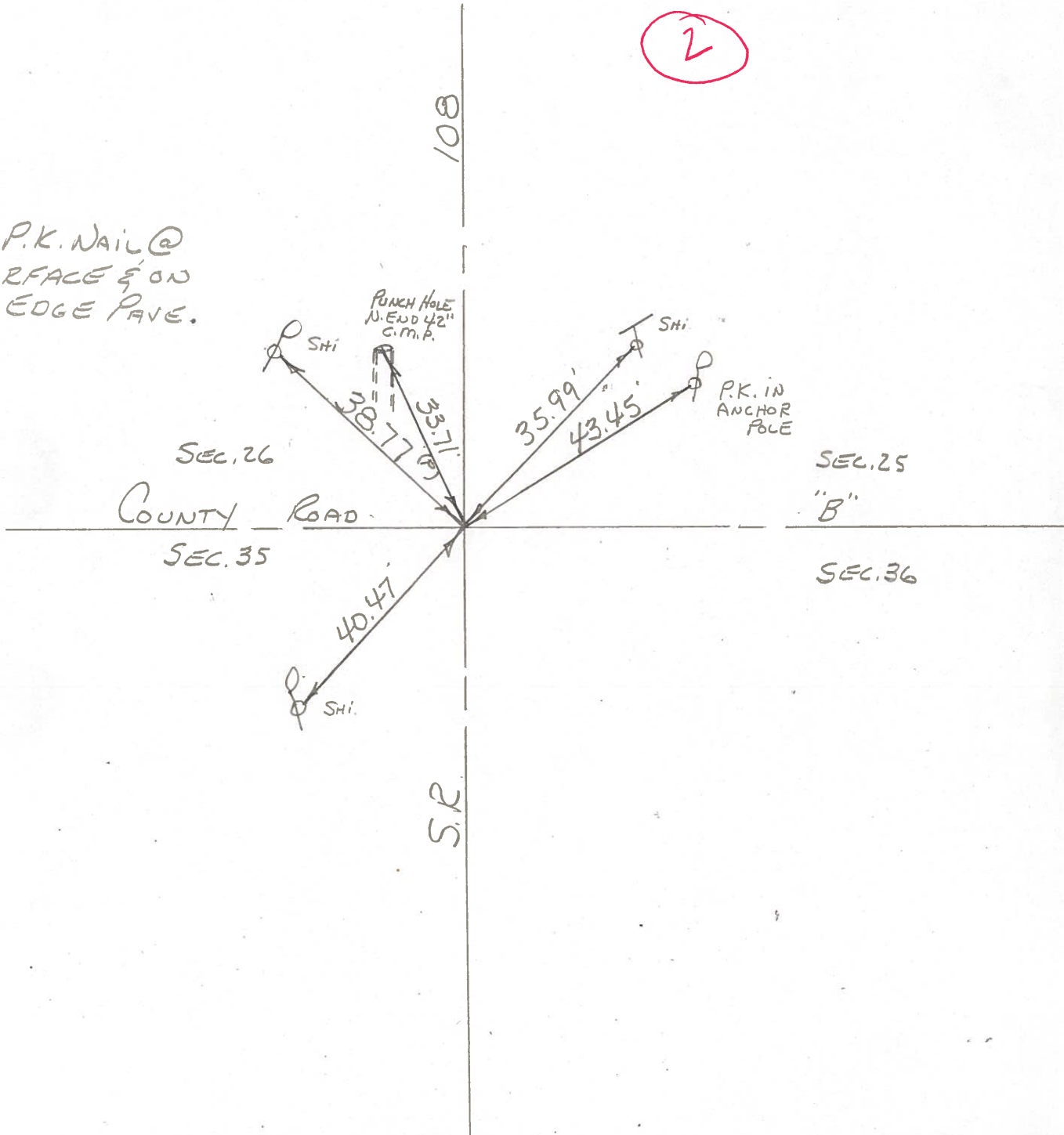
T3N, R6E

Personnel BURNSIDE



FD. P.K. NAIL @
SURFACE & ON
W. EDGE PAVE.

2



PERSONNEL	TITLE	PERSONNEL	TITLE
Tomsic			
Neuser			
Granata			

COUNTY HENRY DATE July 15, 1974

S. R. 108 WEATHER _____

SEC. Pleasant TWP. TEMP. _____

DESCRIPTION	LEFT	CENTER LINE	RIGHT	JOB NO.
-------------	------	-------------	-------	---------

