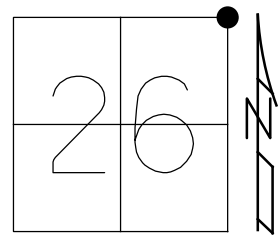


O.D.O.T. DISTRICT 2 SURVEY OFFICE (USE ONLY)

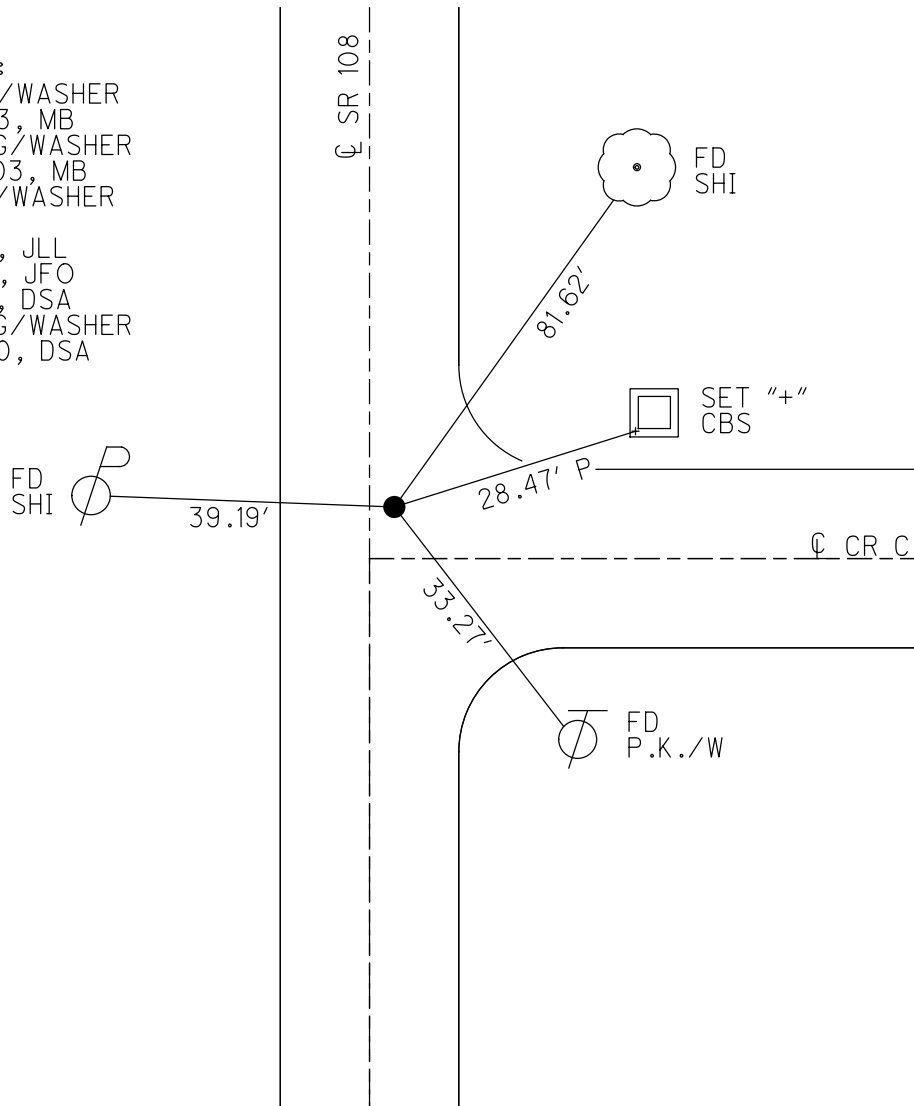
PERSONNEL _____ REFERENCE NO. 3 SHEET 6 OF 21
 NOTES GARRETT DATE 7/7/20 ROUTE SR 108
 H.C. AUBLE WEATHER SUNNY COUNTY HENRY
 R.C. MAHLER TEMP. 79° TOWNSHIP PLEASANT
 DWG BY NIESE PID 95739 SECTION 26
 T 3 N R 6 E

TYPE MONUMENT MAG/WASHER
 ON SURFACE - ~~BELOW~~ ON
 OFFSET 0.8' LT : RT
10.8' TO LT EDGE PAVEMENT
 STATION: 105+96.53



HORZ. DATUM: NAD83 (2011) GEOID: NAVD88 2012A
 GRID: NORTHING: 561183.421 EASTING: 1519376.840

RECORD:
 FD P.K./WASHER
 4/29/03, MB
 SET MAG/WASHER
 10/30/03, MB
 FD MAG/WASHER
 REF3
 2/14/19, JLL
 10/4/19, JFO
 7/7/20, DSA
 SET MAG/WASHER
 12/14/20, DSA



O.D.O.T. DISTRICT 2 SURVEY OFFICE

PERSONNEL

REFERENCE NO. 3

SHEET 5 OF 20

NOTES BRUMBAUGH

H.C. BARNHISEL

R.C. GLASS

RYALL

DRAWN BY: CANTERBURY

DATE 4-29-03

WEATHER CLEAR

TEMP. + 50°

ROUTE S.R. # 108

COUNTY HENRY

TOWNSHIP PLEASANT

SECTION 26

T 3 N R 6 E

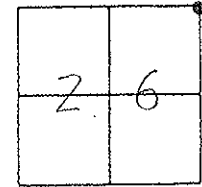
TYPE MONUMENT P.K./WASHER

ON SURFACE - ~~BELOW~~ SURFACE

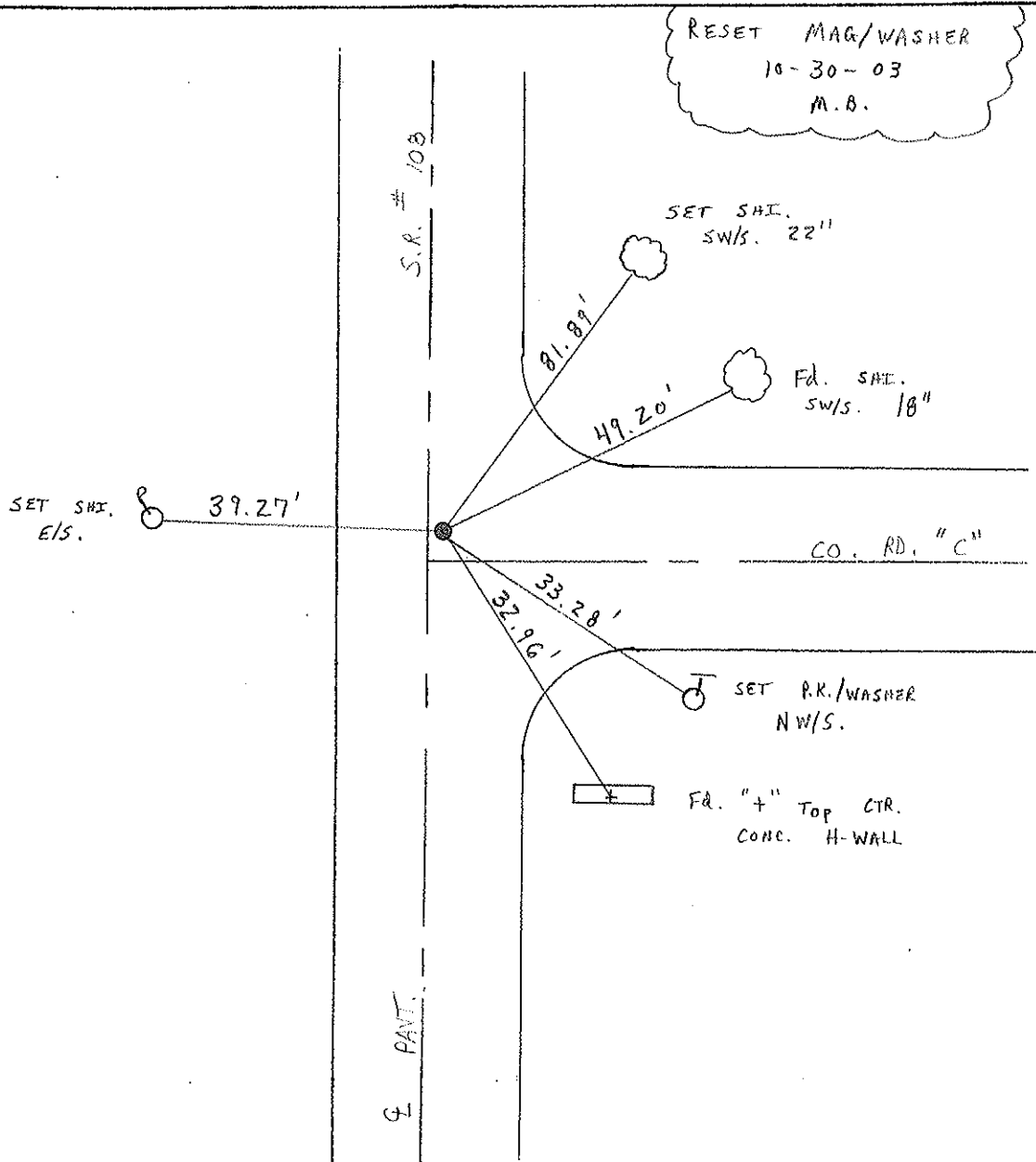
~~LEFT - & PAV'T. - RIGHT~~ 1.0' RT &

10.8 TO LT. EDGE PAVEMENT

S.L.M. 105+95



RESET MAG/WASHER
 10-30-03
 M.B.



O.D.O.T. DISTRICT 2 SURVEY OFFICE

PERSONNEL

REFERENCE NO. 3

SHEET 5 OF 54

NOTES LOEHRKE

H.C. CURTIS

DATE 7-21-92

ROUTE SR 108

R.C. ROMETO

WEATHER pt Cloudy

COUNTY HENRY

FALKOWSKI

TEMP. +70

TOWNSHIP Pleasant

SECTION 26

T. 3 N R. 6 E

Reset 9-29-92

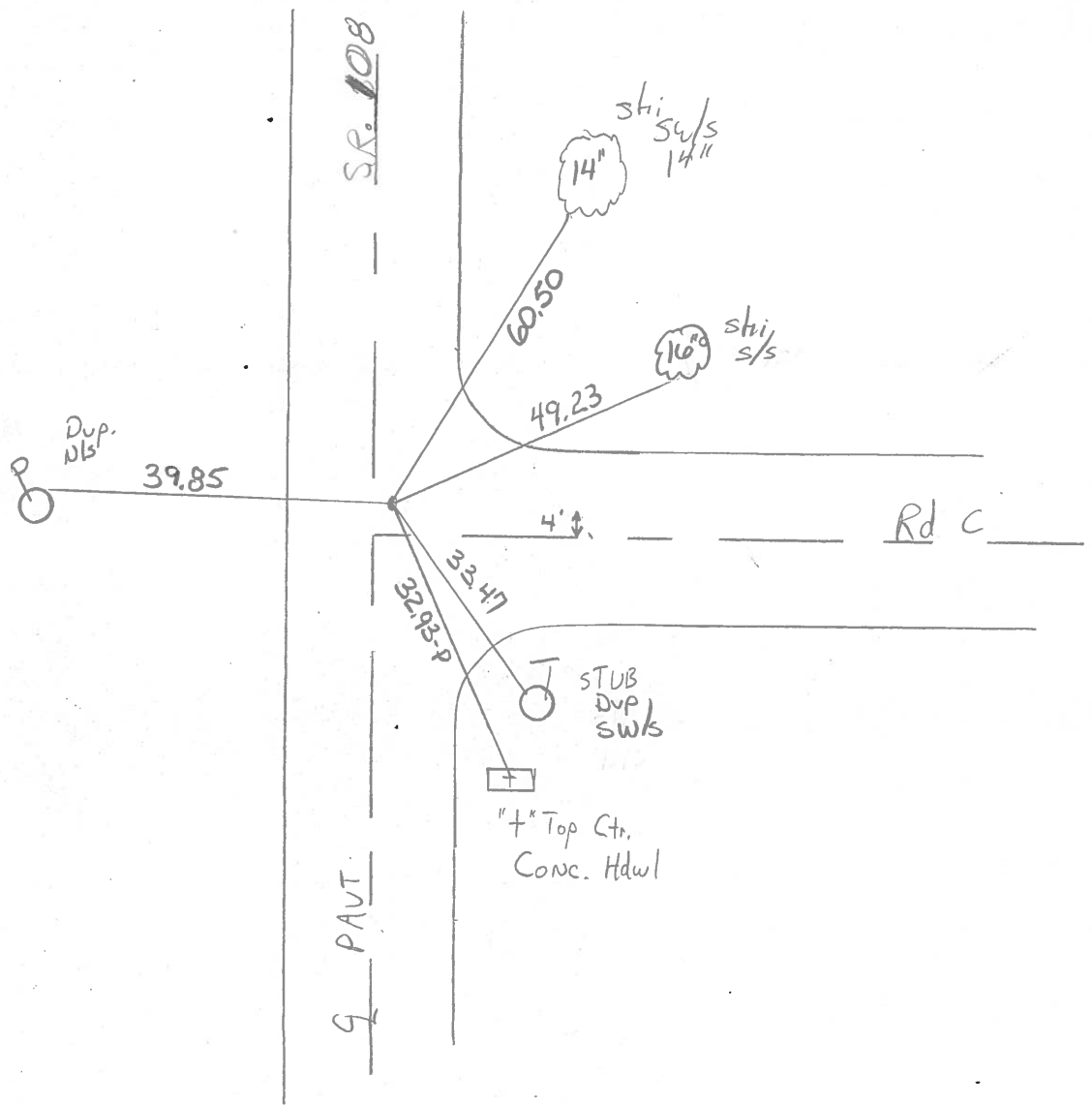
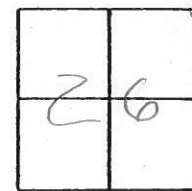
TYPE MONUMENT P.K. / WASHER

ON SURFACE - BELOW Yes

LEFT - ~~C~~ PAV'T. - RIGHT 0.8

104 TO 4 EDGE PAVEMENT

S.L.M. 105+95



County Henry S.R. 108

Township Pleasant

Section 24

T3N, R6E

Personnel Barnhiser

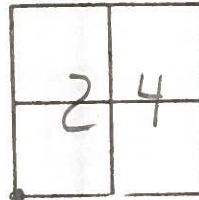
Loehrke H.C.

Householder R.C.

Date 5-2-84

Weather Clear

Temp. + 58°



3

FD Lg RR Spk, with punch Hole @ surface

SLM: 105+95

10.9 ft of Lt EP

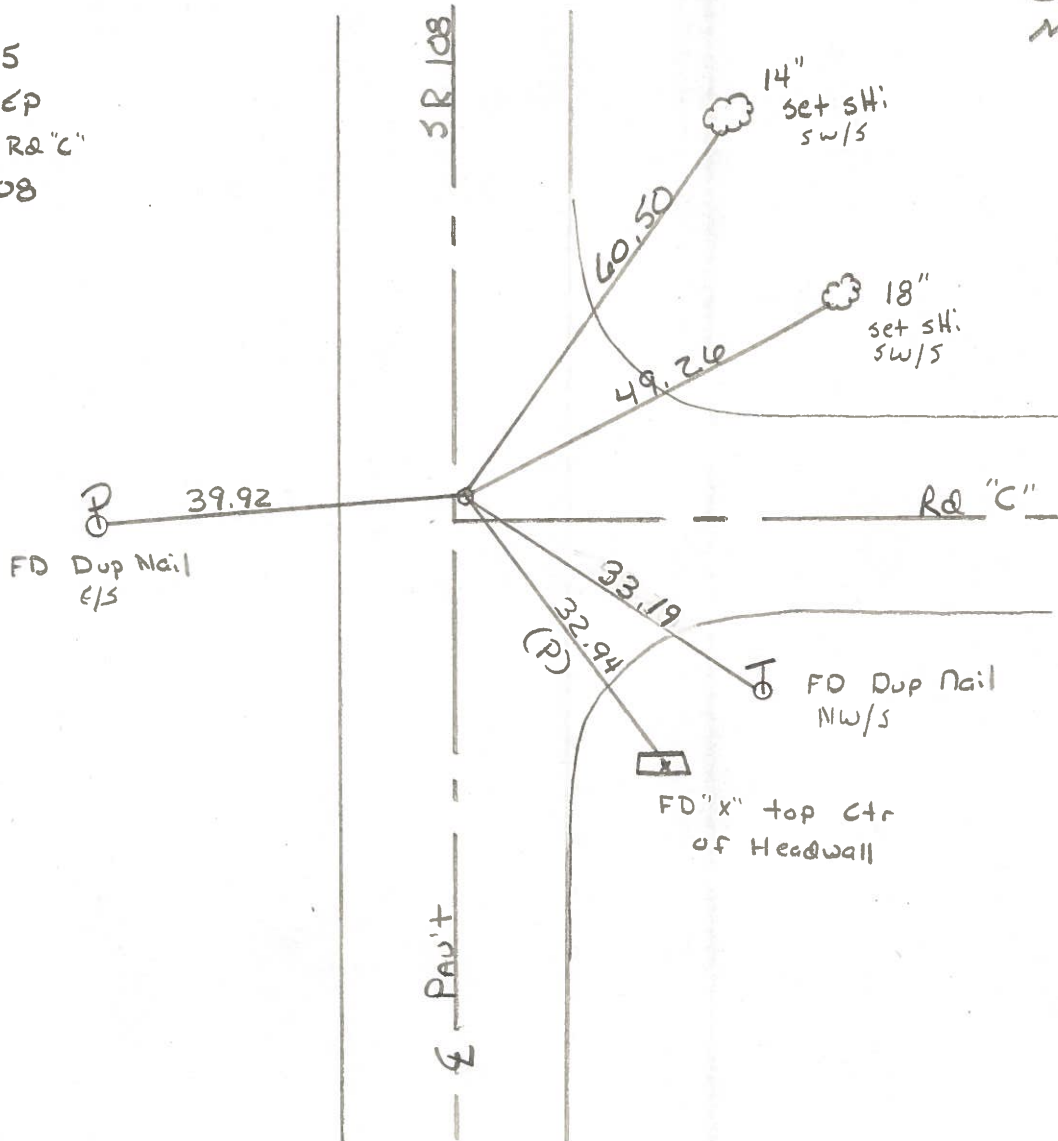
4.0 ft of R "C"

1.1 ft of E 108

8-20-84

SET PK/WASHER

M.P.B.



FD Dup Nail E/S

FD Dup Nail NW/S

FD "x" top ctr of Headwall