

O.D.O.T. DISTRICT 2 SURVEY OFFICE (USE ONLY)

PERSONNEL

REFERENCE NO. 5

SHEET 8 OF 21

NOTES GARRETT

DATE 7/7/20

ROUTE SR 108

H.C. AUBLE

WEATHER CLEAR

COUNTY HENRY

R.C. MAHLER

TEMP. 87°

TOWNSHIP PLEASANT

SECTION 23

DWG BY NIESE

PID 95739

T 3 N R 6 E

TYPE MONUMENT MAG/WASHER

ON SURFACE - ~~BELOW~~ ON

OFFSET \odot PAVEMENT 6.7' LT : RT

4.0' TO LT EDGE PAVEMENT

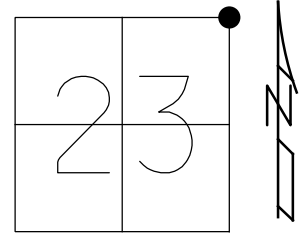
STATION: 158+86.49

HORZ. DATUM: NAD83 (2011)

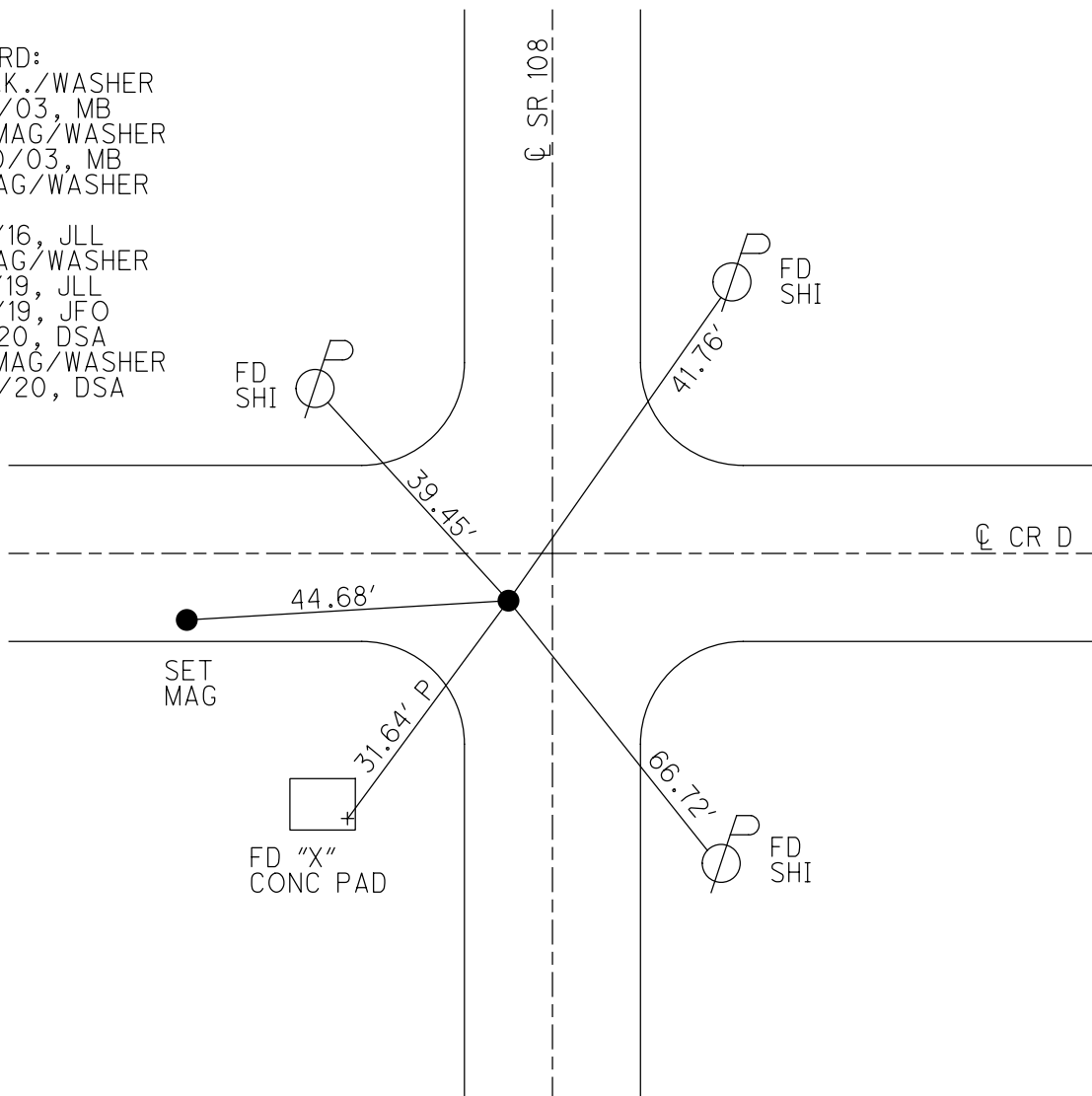
GEOID: NAVD88 2012A

GRID: NORTHING: 566472.981

EASTING: 1519442.201



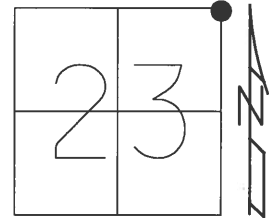
RECORD:
 FD P.K./WASHER
 4/30/03, MB
 SET MAG/WASHER
 10/30/03, MB
 FD MAG/WASHER
 REF5
 2/10/16, JLL
 FD MAG/WASHER
 2/14/19, JLL
 10/4/19, JFO
 7/7/20, DSA
 SET MAG/WASHER
 12/14/20, DSA



O.D.O.T. DISTRICT 2 SURVEY OFFICE (USE ONLY)

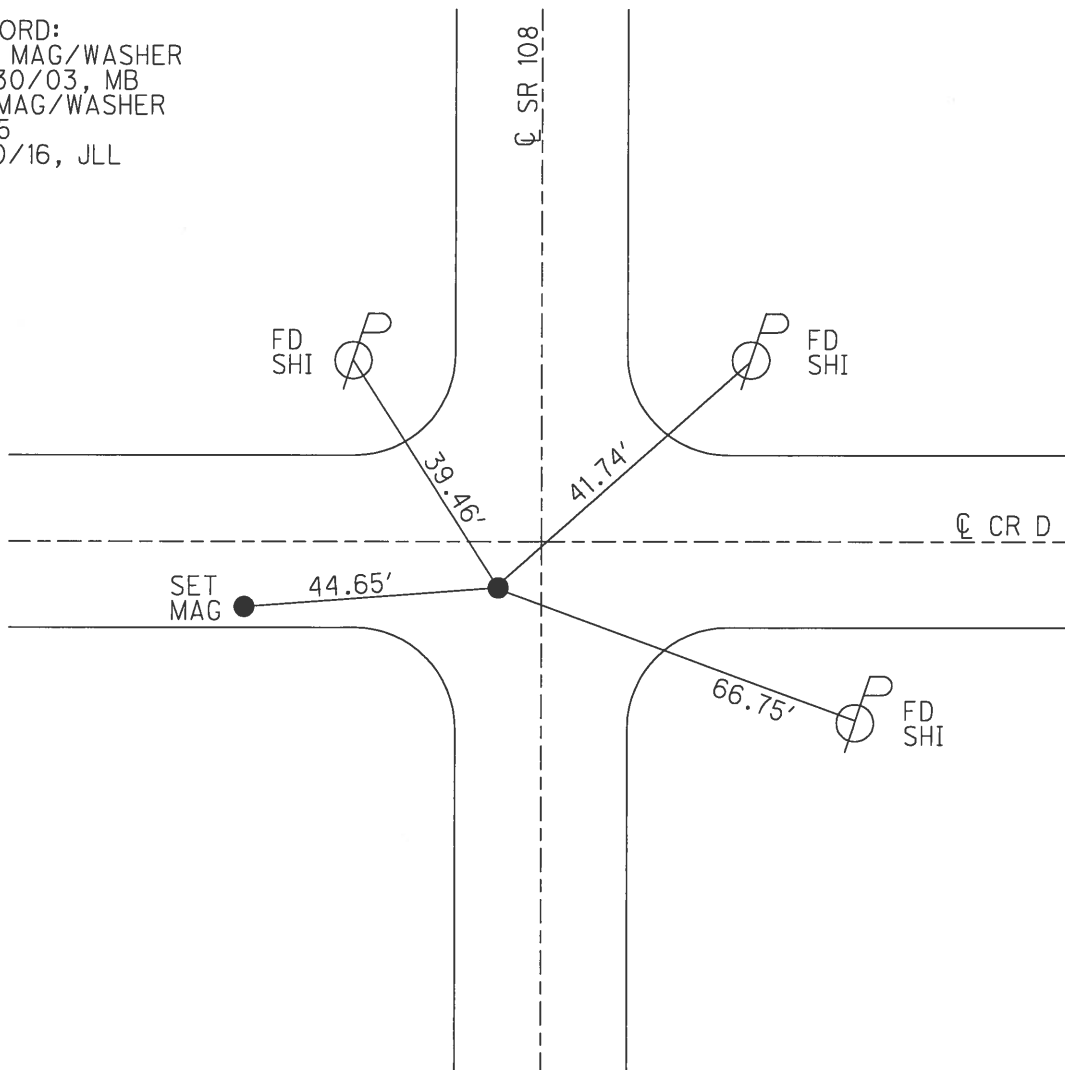
PERSONNEL _____ REFERENCE NO. 5 SHEET 1 OF 16
 NOTES BRUMBAUGH DATE 4/30/03 ROUTE SR 108
 H.C. BARNHISEL WEATHER CLEAR COUNTY HENRY
 R.C. GLASS TEMP. 50° TOWNSHIP PLEASANT
RYALL SECTION 23
CANTERBURY T 3 N R 6 E

TYPE MONUMENT P.K./WASHER
 ON SURFACE - ~~BELOW~~ ON _____
 LEFT - CL PAV'T - ~~RIGHT~~ 5.8'
4.0' TO LT EDGE PAVEMENT
 S.L.M. 157+96



Grid: Northing: 566472.972 Easting: 1519442.203

RECORD:
 SET MAG/WASHER
 10/30/03, MB
 FD MAG/WASHER
 REF5
 2/10/16, JLL



O.D.O.T. DISTRICT 2 SURVEY OFFICE

PERSONNEL

REFERENCE NO. 5

SHEET 7 OF 20

NOTES BRUMBAUGH

H.C. BARNHISEL

DATE 4-30-03

ROUTE S.R. # 108

R.C. GLASS

WEATHER CLEAR

COUNTY HENRY

RYALL

TEMP. +50°

TOWNSHIP PLEASANT

DRAWN BY: CANTERBURY

SECTION 23

T 3 N R 6 E

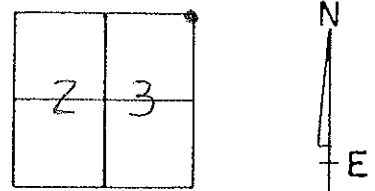
TYPE MONUMENT P.R. / WASHER

ON SURFACE - BELOW SURFACE

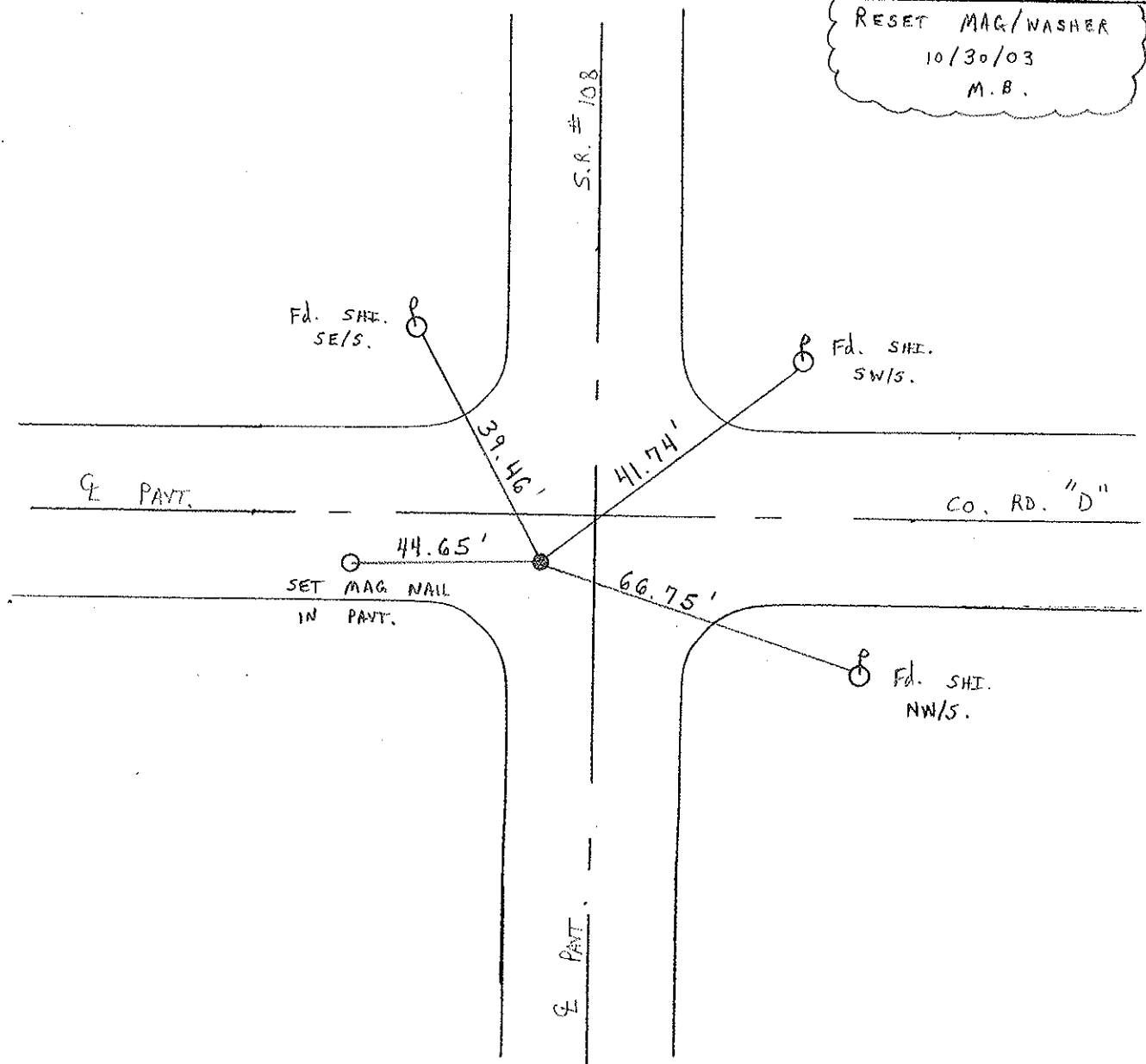
LEFT - ♀ PAVT. - RIGHT 5.8' LT ♀

H.O. TO LT EDGE PAVEMENT

S.L.M. 158+91



RESET MAG/WASHER
 10/30/03
 M.B.



O.D.O.T. DISTRICT 2 SURVEY OFFICE

PERSONNEL _____

REFERENCE NO. 5

SHEET 7 OF 54

NOTES CORDES

H.C. BARNHISEL M

DATE 12-5-94

ROUTE 108

R.C. CORDES

WEATHER CLOUDY

COUNTY HENRY

TEMP. +55° F

TOWNSHIP PICASANT

SECTION 23

T3 N R 6 E

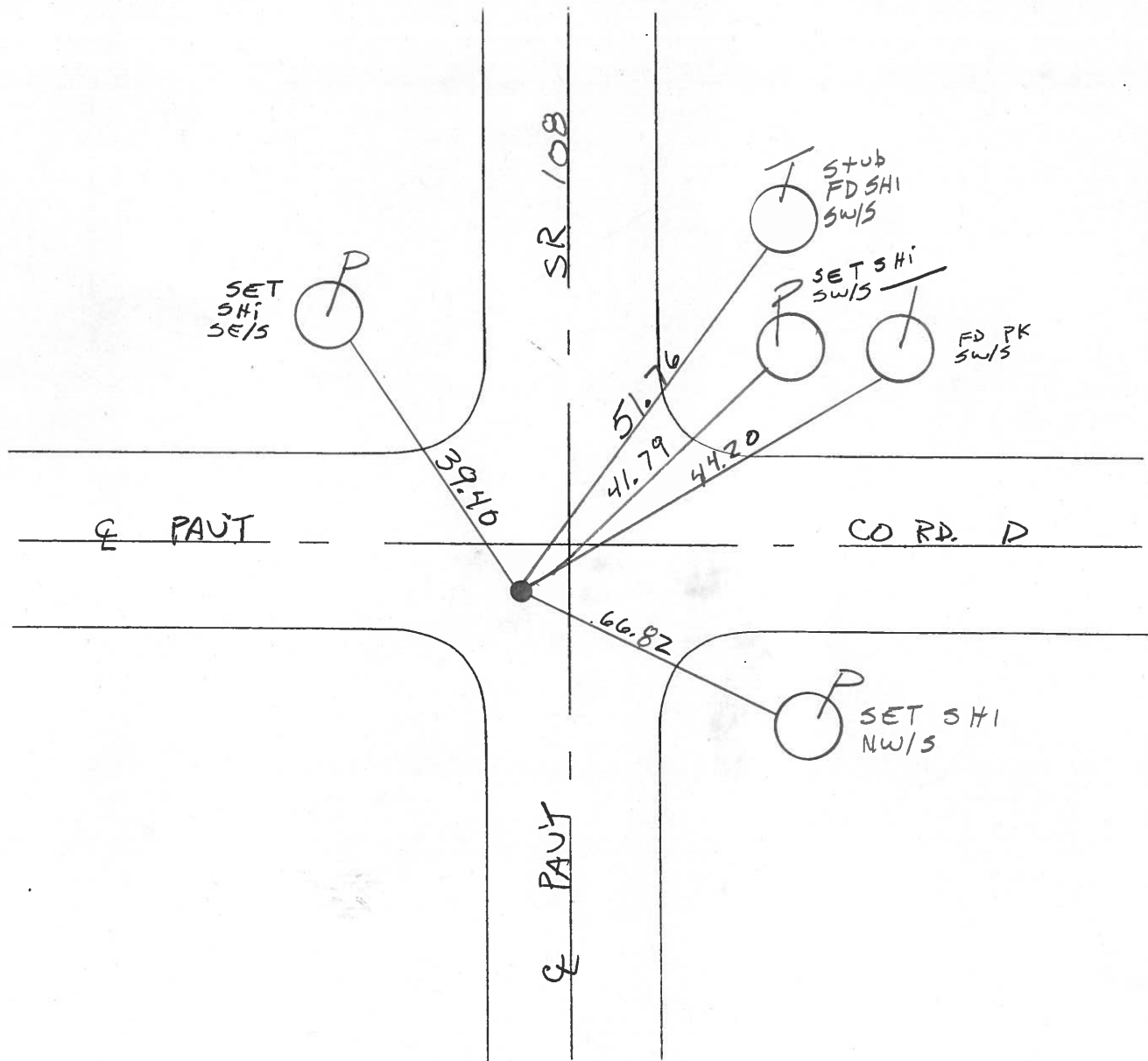
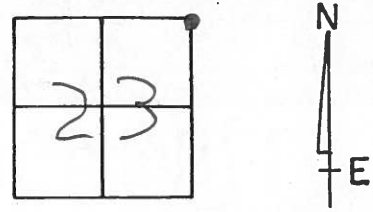
TYPE MONUMENT PK 4" WASHER

ON SURFACE - ~~BELOW~~ YES

LEFT- & PAVT. - ~~RIGHT~~ 6.2'

3.0' TO LT EDGE PAVEMENT

S.L.M. 158+91



O.D.O.T. DISTRICT 2 SURVEY OFFICE

PERSONNEL

REFERENCE NO. 5

SHEET 7 OF 54

NOTES LOENRKE

H.C. CURTIS

DATE 7-21-92

ROUTE S.R. 108

R.C. ROMETO

WEATHER Pt Cloudy

COUNTY HENRY

FALKOWSKI

TEMP. 72

TOWNSHIP PLEASANT

SECTION 23

T 3 N R 6 E

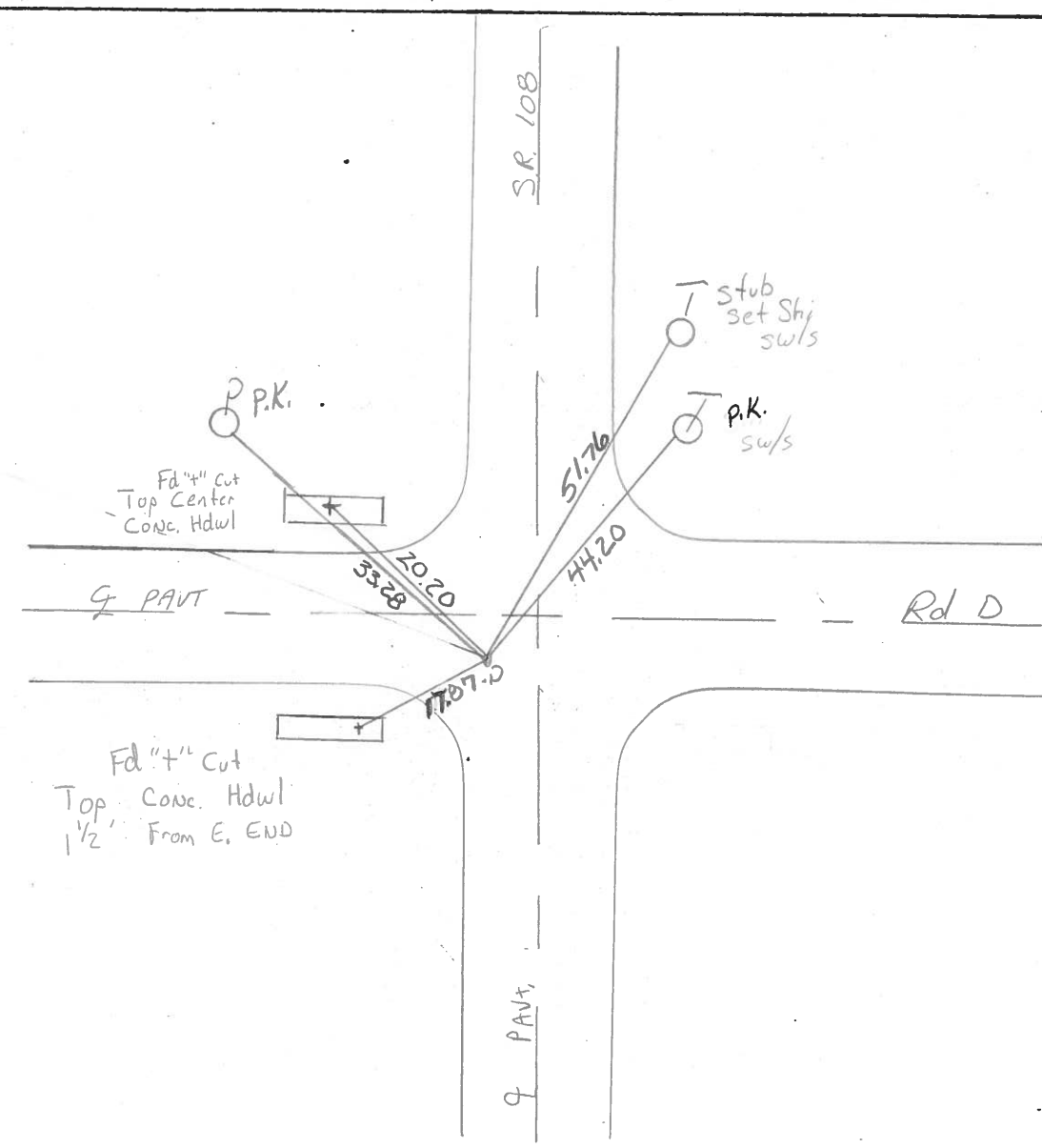
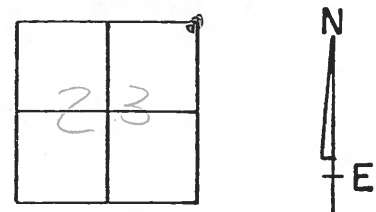
TYPE MONUMENT PK & WASHER Reset 9-29-92

ON SURFACE - ~~BELOW~~ Yes

LEFT- & PAV'T. - RIGHT 6.2

3.0 TO Lt EDGE PAVEMENT

S.L.M. 150+91



County HENRY S.R. 108

Township Pleasant

Section N.E. Cor. Sec 23

T3N, R6E

Personnel Barnhisel

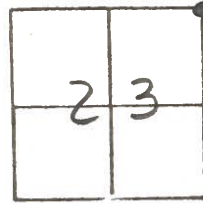
Loehrke H.C.

Householder R.C.

Date 5-2-84

Weather Clear

Temp. +58°



#5

FD 3m RR SPK
⊙ surface

SLM: 158+85

6.0 Lt of E 108

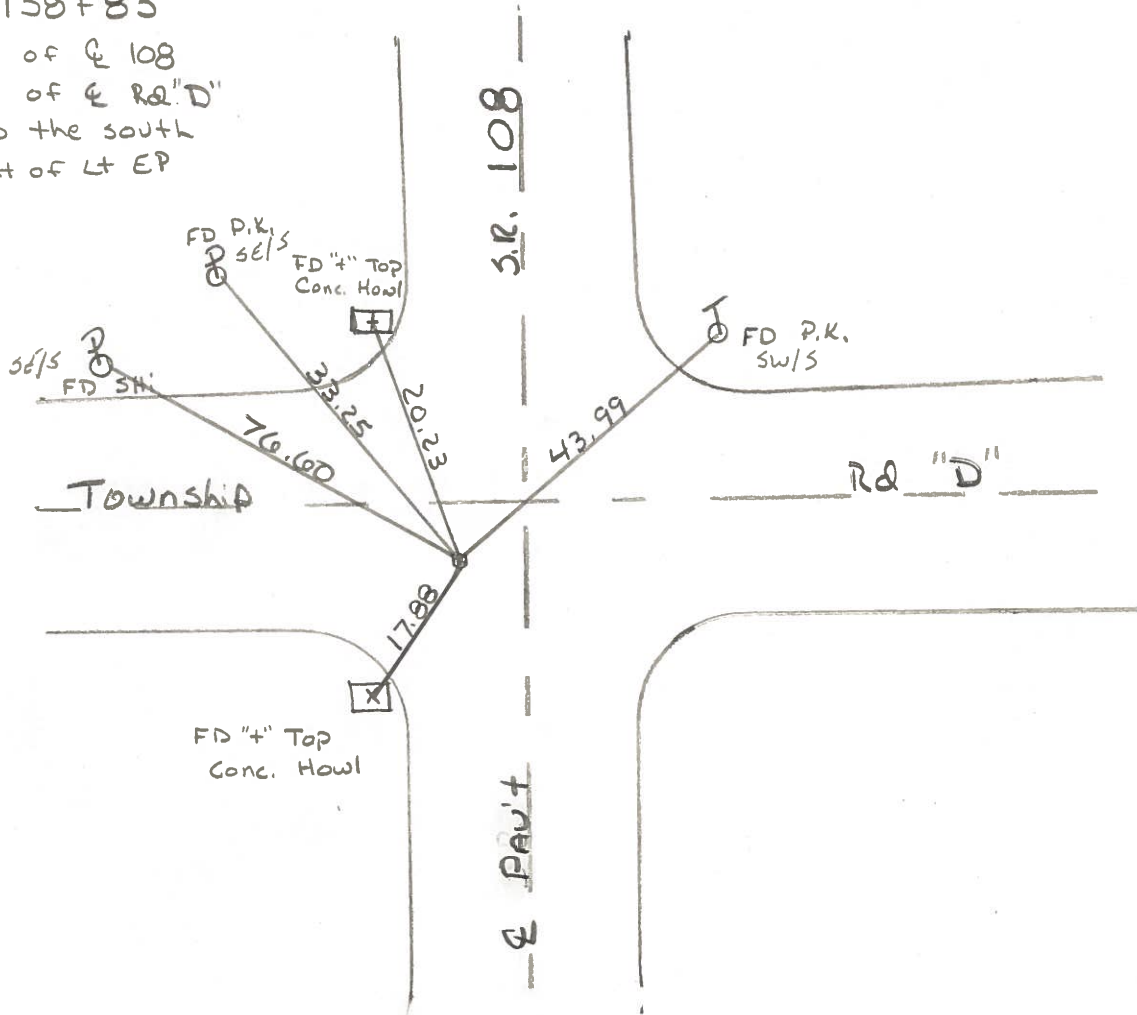
6.0 S of E Rd "D"
to the south

3.0 Rt of Lt EP

8-27-84

SET PK/WASHER

M, D, B.



OD.O.T. DISTRICT 2 SURVEY OFFICE

Sht. 5 of 11
S.R. 108

County HENRY

Date 8-2-78

Township PLEASANT

Weather CLOUDY

Section N.E. COR. SEC. 23

Temp. +78°

T3N, R6E

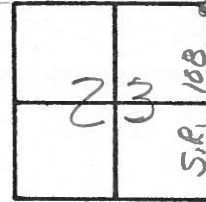
Personnel BURNSIDE

SMITH

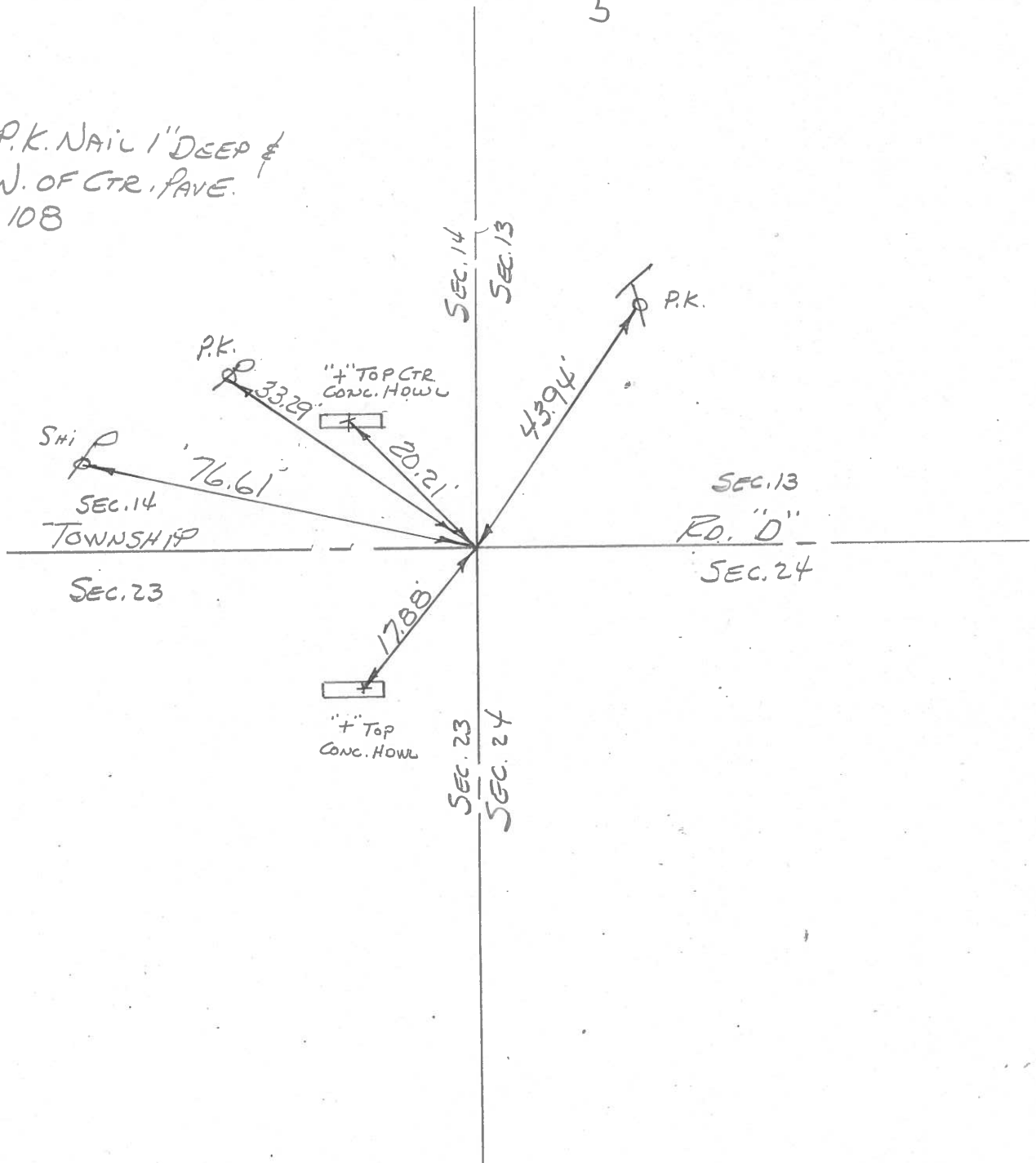
BOWERS

KNAPP

MEAD



FD. P.K. NAIL 1" DEEP &
6 ± W. OF CTR. PAVE.
S.R. 108



PERSONNEL	TITLE	PERSONNEL	TITLE
Tomsic			
Neuser			
Granata			

COUNTY HENRY DATE July 15, 1974

S. R. 108 WEATHER _____

SEC. Pleasant Twp TEMP. _____

DESCRIPTION _____ LEFT _____ CENTER LINE _____ RIGHT _____ JOB NO. _____

