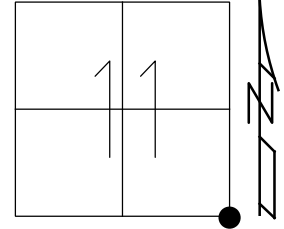


O.D.O.T. DISTRICT 2 SURVEY OFFICE (USE ONLY)

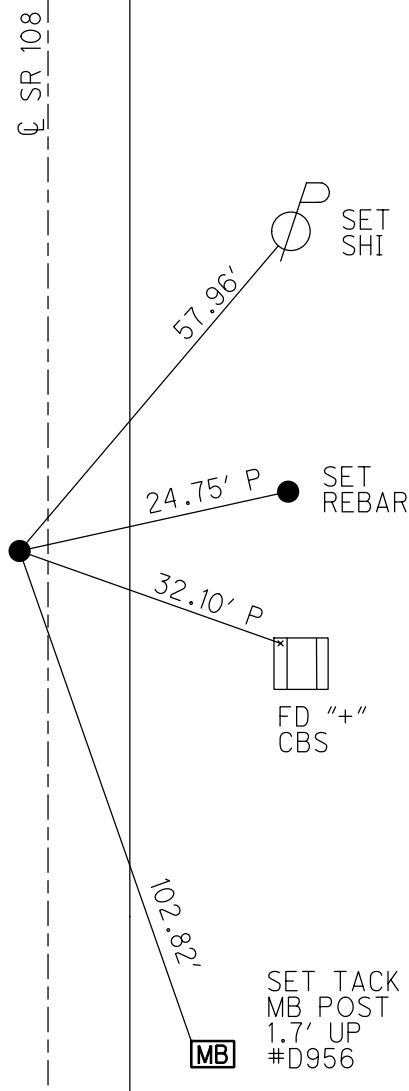
PERSONNEL _____ REFERENCE NO. 7 SHEET 10 OF 21
 NOTES GARRETT DATE 7/7/20 ROUTE SR 108
 H.C. AUBLE WEATHER SUNNY COUNTY HENRY
 R.C. MAHLER TEMP. 89° TOWNSHIP PLEASANT
 DWG BY NIESE PID 95739 SECTION 11
 T 3 N R 6 E

TYPE MONUMENT MAG/WASHER
 ON SURFACE - ~~BELOW~~ ON
 OFFSET Q PAVEMENT 4.5' LT : ~~RT~~
5.9' TO LT EDGE PAVEMENT
 STATION: 212+03.38



HORZ. DATUM: NAD83 (2011) GEOID: NAVD88 2012A
 GRID: NORTHING: 571789.538 EASTING: 1519502.008

RECORD:
 FD P.K./WASHER
 4/30/03, MB
 SET MAG/WASHER
 10/30/03, MB
 FD MAG/WASHER
 REF7
 2/10/16, JLL
 FD MAG/WASHER
 REF7
 2/14/19, JLL
 10/4/19, JFO
 7/7/20, DSA
 SET MAG/WASHER
 12/14/20, DSA



O.D.O.T. DISTRICT 2 SURVEY OFFICE (USE ONLY)

PERSONNEL _____ REFERENCE NO. 7 SHEET 3 OF 16

NOTES BRUMBAUGH DATE 4/30/03 ROUTE SR 108
H.C. BARNHEISEL WEATHER PTLY CLOUDY COUNTY HENRY
R.C. RYALL TEMP. 60° TOWNSHIP PLEASANT
CANTERBURY SECTION 11
T 3 N R 6 E

TYPE MONUMENT P.K./WASHER

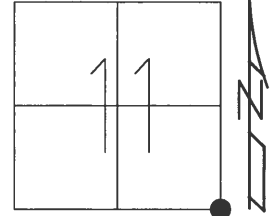
ON SURFACE - ~~BELOW~~ ON _____

LEFT - ☉ PAV'T - ~~RIGHT~~ 4.0'

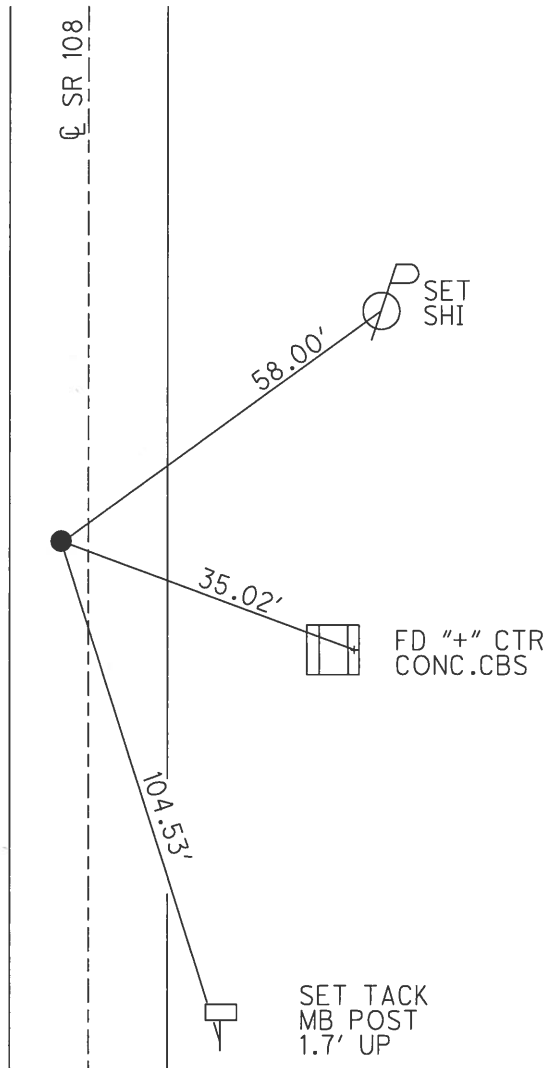
5.9' TO LT EDGE PAVEMENT

S.L.M. 211+17

Grid: Northing: 571789.542 Easting: 1519502.011



RECORD:
SET MAG/WASHER
10/30/03, MB
FD MAG/WASHER
REF7
2/10/16, JLL



O.D.O.T. DISTRICT 2 SURVEY OFFICE

PERSONNEL

REFERENCE NO. 7

SHEET 10 OF 20

NOTES BRUMBAUGH

H.C. BARNHISEL

R.C. RYALL

DRAWN CANTERBURY

DATE 4-30-03

WEATHER Pt. CLOUDY

TEMP. +60°

ROUTE S.R. # 108

COUNTY HENRY

TOWNSHIP PLEASANT

SECTION 11

T 3 N R 6 E

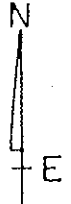
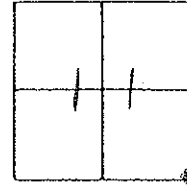
TYPE MONUMENT P.K. / WASHER

ON SURFACE - ~~BELOW~~ SURFACE

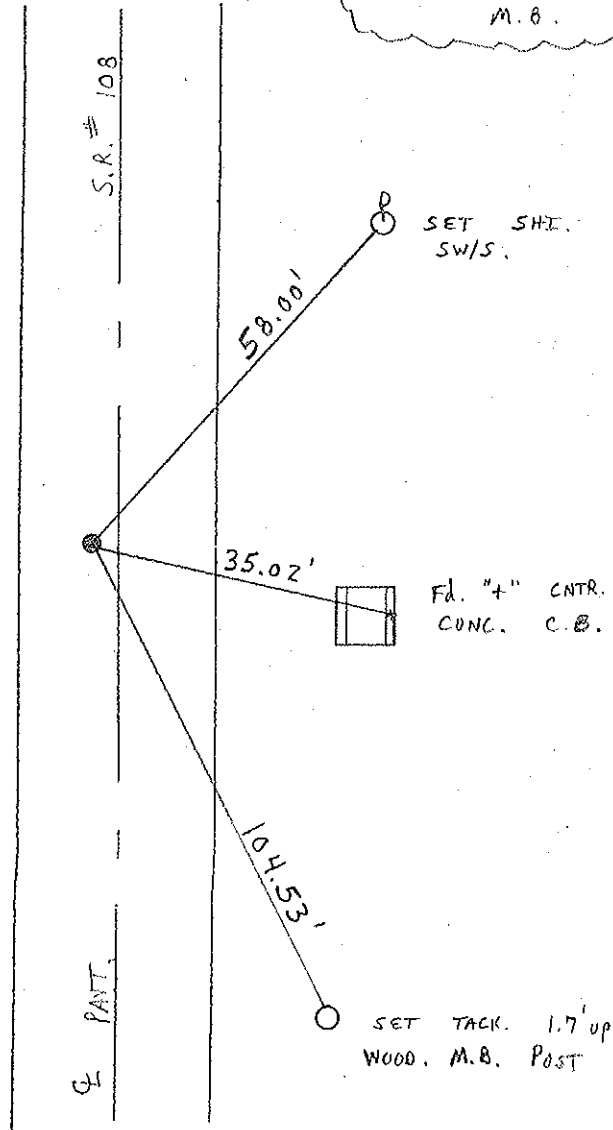
LEFT - ~~Q~~ PAV'T. - RIGHT 4.0' LT Q

5.9' TO LT. EDGE PAVEMENT

S.L.M. Z12+12



RESET MAG/WASHER
10/30/03
M.B.



O.D.O.T. DISTRICT 2 SURVEY OFFICE

PERSONNEL

REFERENCE NO. 7

SHEET 9 OF 54

NOTES LOEHRIKE

H.C. CURTIS

DATE 7-21-92

ROUTE S.R. 108

R.C. ROMETO

WEATHER Pt. Cloudy

COUNTY Henry

FALKOWSKI

TEMP. +73

TOWNSHIP Pleasant

SECTION 11

Reset 9-29-92

T 3 N R 6 E

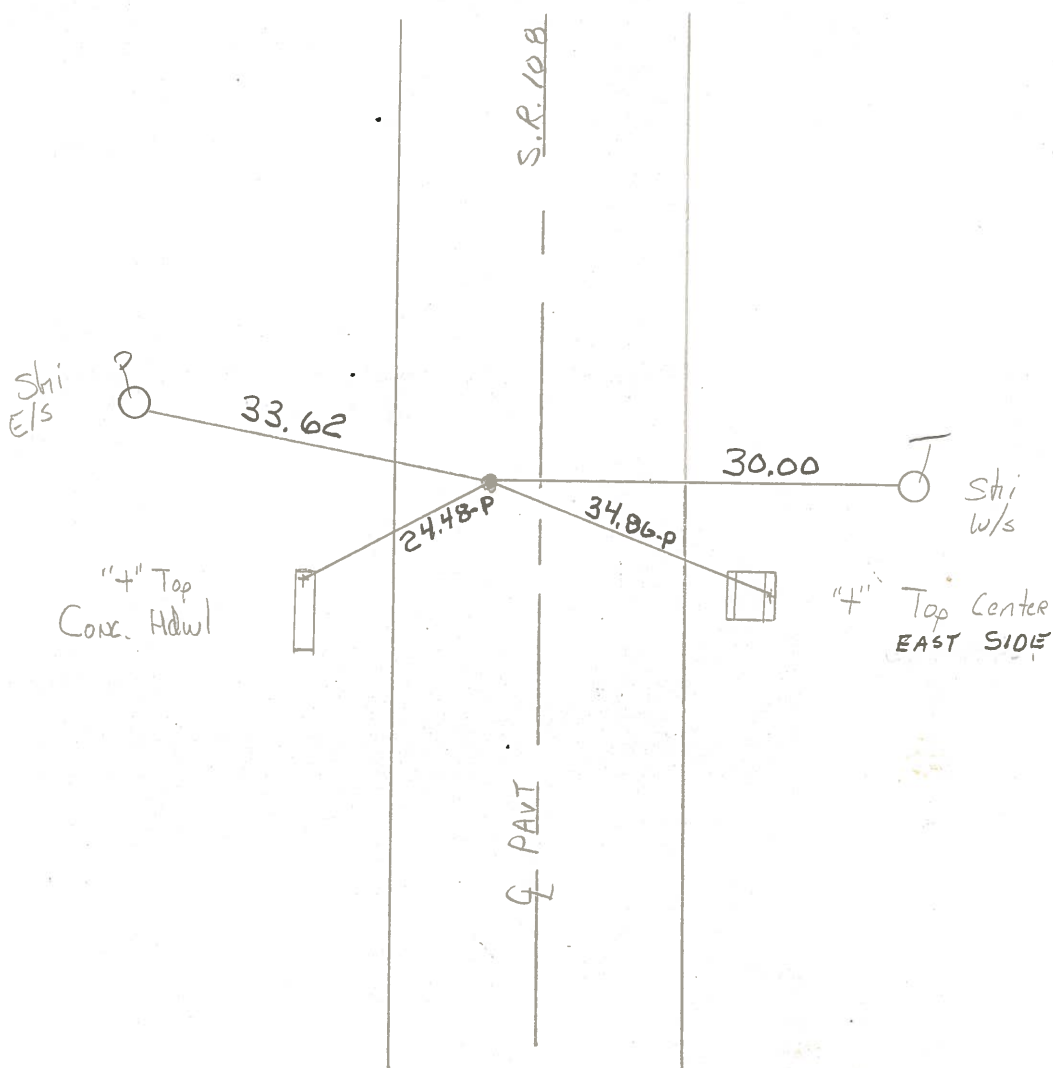
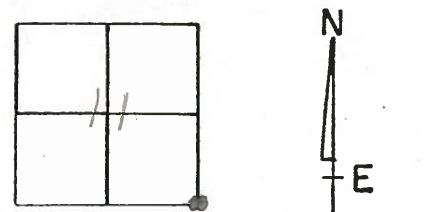
TYPE MONUMENT P.K. & WASHER

ON SURFACE - BELOW Yes

LEFT - & PAV'T. - RIGHT 4.5'

6.8 TO LT EDGE PAVEMENT

S.L.M. 212+12



County HENRY S.R. 108

Township PLEASANT

Section S.E. Cor Sec 11

T3N, R6E

Personnel Barnhisel

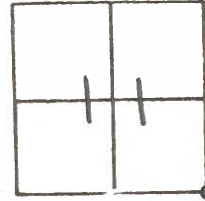
Loehrke H.C.

Householder R.C.

Date 5-2-83

Weather clear

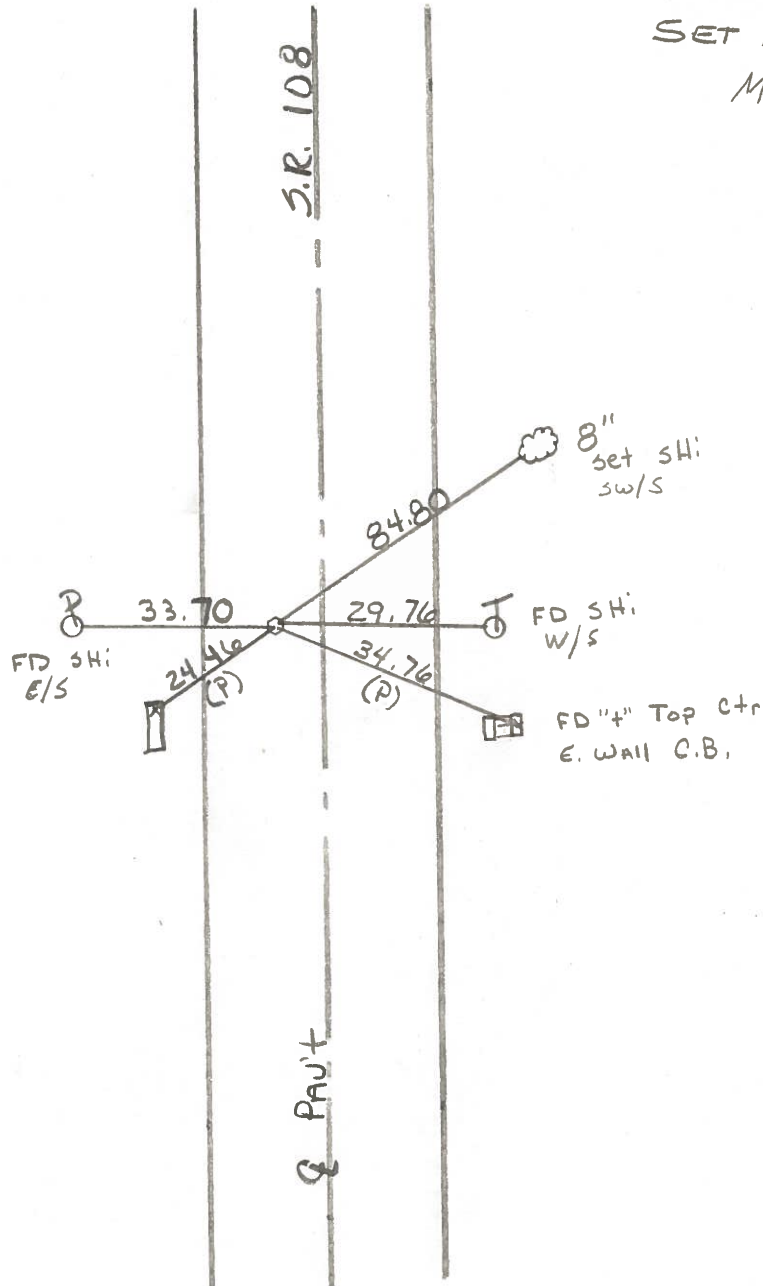
Temp. +58°



#7

8-27-84
SET PK./WASHER
M.P.B.

FD Lg RR Spk
SLM: 212+00
4.5 Lt of 108
5.5 Rt of Lt EP
13.7 Lt of Rt EP



County HENRY S.R. 108

Date 1-22-82

Township PLEASANT

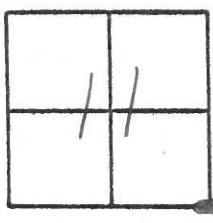
Weather SHOW - WINDY

Section 11

Temp. +14°

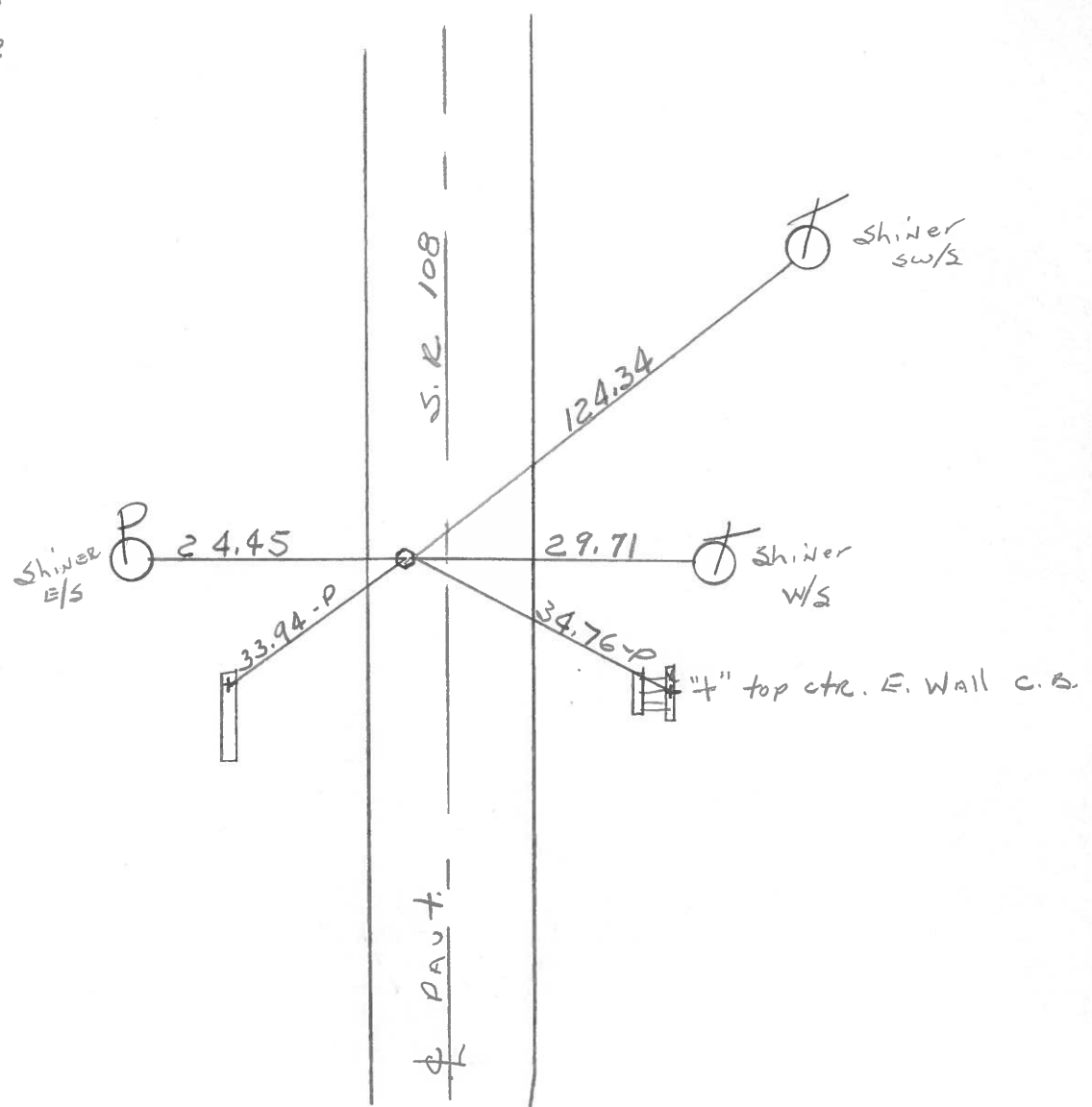
T3N, R6E

Personnel HOFFMAN
Householder
Loehrke
Griffith



Fd R.R. SPK @ SURFACE, set by County
 4.4 W. of & part
 13.5' to E.E.P.
 5.5' to W.E.P.

#7



COUNTY HENRY

RECEIVED

T-3-N, R-6-E

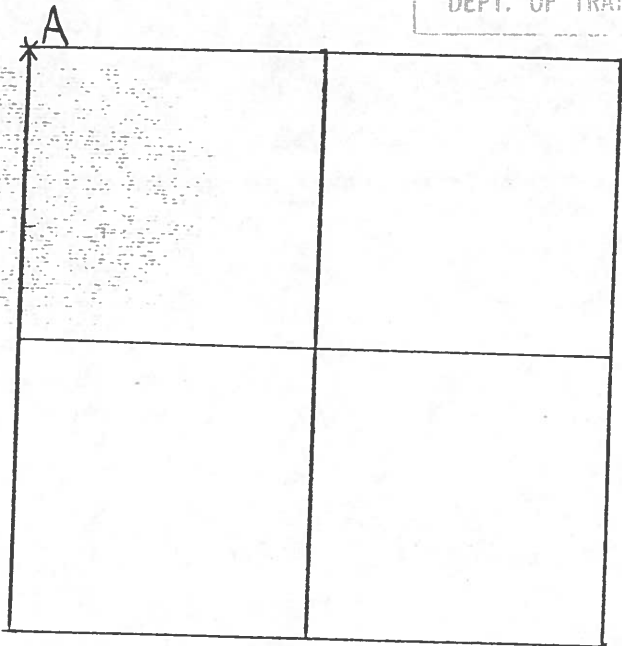
TOWNSHIP PLEASANT

JAN 11 1982

SECTION 13

DISTRICT NO. 2
DEPT. OF TRANSPORTATION

#7



1-6-82 R.W, D.B, J.B.

A - FOUND SMALL R.R. SPIKE ON SURFACE 2.1' NORTH AND 1.9' EAST OF IRON PIN WHICH WAS 0.20' SOUTH AND 0.15' WEST OF HIGH POINT OF STONE (6" x 9" x 13") 13" BELOW ROAD SURFACE. REMOVED SMALL R.R. SPIKE AND IRON PIN. PLACED CENTER PUNCHED R.R.

SPIKE ON SURFACE OVER HIGH POINT OF STONE. P.K.'S
6' N. & E. STONE IS 5.5' EAST OF WEST EDGE 19' PAV'T.
124.34' N.N.E. TO NAIL/SHINER SW/S Φ
29.71' E TO NAIL/SHINER W/S Φ
34.76' S.E. TO "+" TOP CENTER EAST WALL CATCH BASIN (P.)
24.45' W. TO NAIL/SHINER E/S Φ
33.94' S.W. TO "+" N. END CONC. HEADWALL (P.)