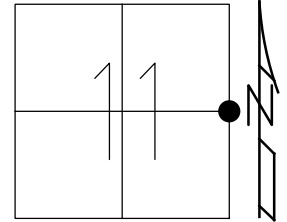


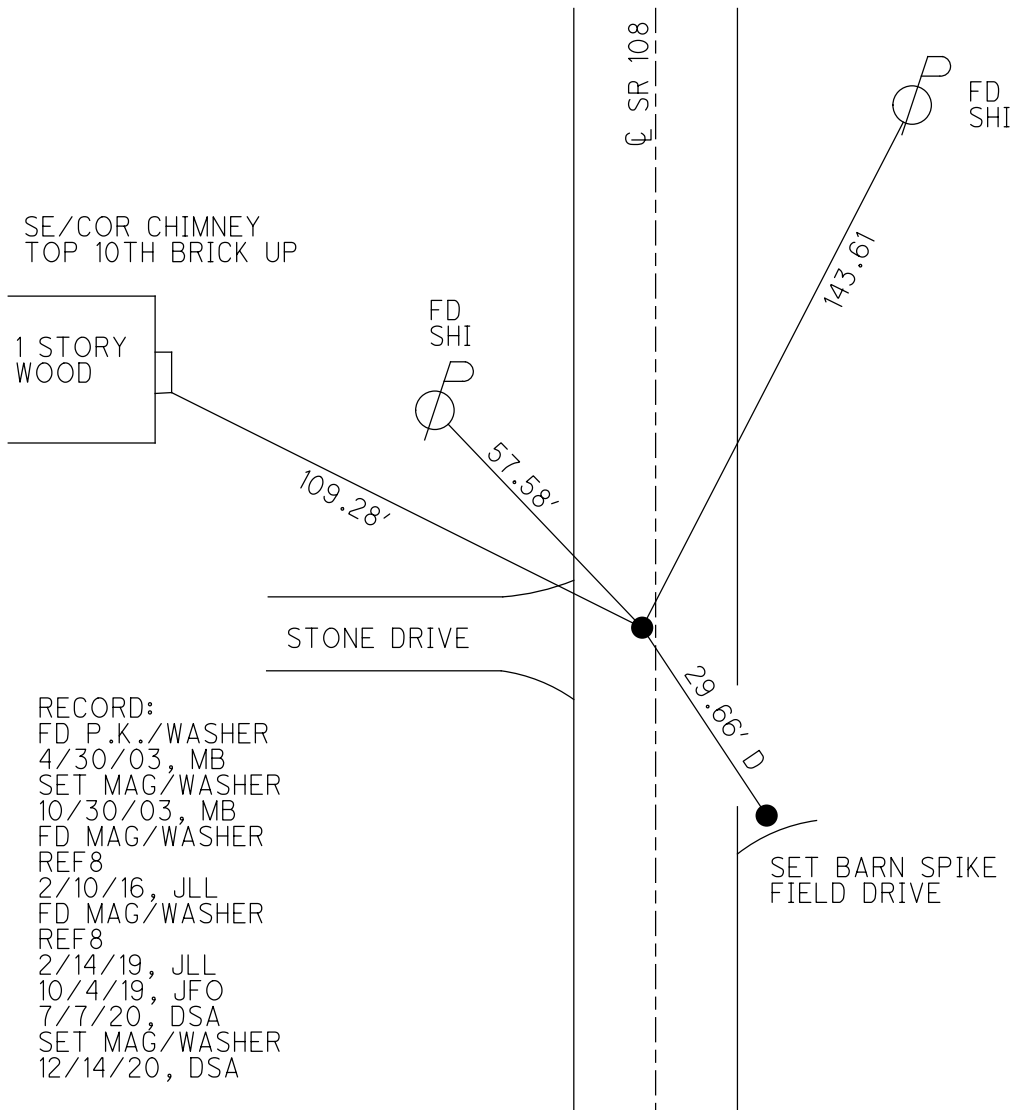
O.D.O.T. DISTRICT 2 SURVEY OFFICE (USE ONLY)

PERSONNEL \_\_\_\_\_ REFERENCE NO. 8 SHEET 11 OF 21  
 NOTES GARRETT DATE 7/7/20 ROUTE SR 108  
 H.C. AUBLE WEATHER SUNNY COUNTY HENRY  
 R.C. MAHLER TEMP. 90° TOWNSHIP PLEASANT  
 DWG BY NIESE PID 95739 SECTION 11  
 T 3 N R 6 E

TYPE MONUMENT MAG/WASHER  
 ON SURFACE - ~~BELOW~~ ON  
 OFFSET Q PAVEMENT 2.0' LT : RT  
8.4' TO LT EDGE PAVEMENT  
 STATION: 238+48.31



HORZ. DATUM: NAD83 (2011) GEOID: NAVD88 2012A  
 GRID: NORTHING: 574434.212 EASTING: 1519538.323



RECORD:  
 FD P.K./WASHER  
 4/30/03, MB  
 SET MAG/WASHER  
 10/30/03, MB  
 FD MAG/WASHER  
 REF8  
 2/10/16, JLL  
 FD MAG/WASHER  
 REF8  
 2/14/19, JLL  
 10/4/19, JFO  
 7/7/20, DSA  
 SET MAG/WASHER  
 12/14/20, DSA

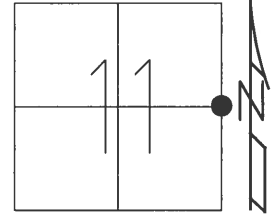
O.D.O.T. DISTRICT 2 SURVEY OFFICE (USE ONLY)

PERSONNEL \_\_\_\_\_ REFERENCE NO. 8 SHEET 4 OF 16

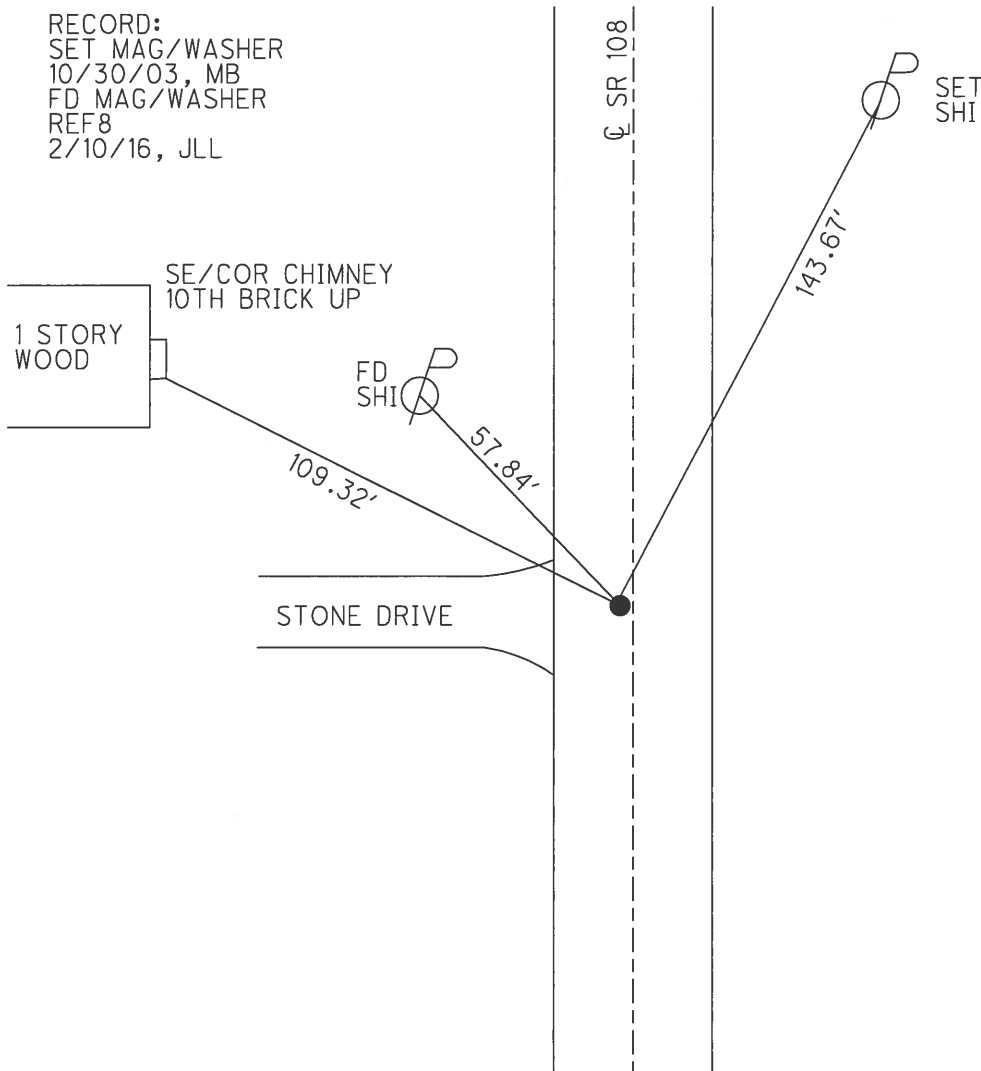
NOTES BRUMBAUGH DATE 4/30/03 ROUTE SR 108  
 H.C. BARNHISEL WEATHER PTLY CLOUDY COUNTY HENRY  
 R.C. RYALL TEMP. \_\_\_\_\_ TOWNSHIP PLEASANT  
 \_\_\_\_\_ CANTERBURY \_\_\_\_\_ SECTION 11  
 \_\_\_\_\_ T 3 N R 6 E

TYPE MONUMENT P.K./WASHER  
 ON SURFACE - ~~BELOW~~ ON \_\_\_\_\_  
 LEFT - ☉ PAV'T - ~~RIGHT~~ 1.5'  
8.4' TO LT EDGE PAVEMENT  
 S.L.M. 239+46.81

Grid: Northing: 574434.217 Easting: 1519538.343



RECORD:  
 SET MAG/WASHER  
 10/30/03, MB  
 FD MAG/WASHER  
 REF8  
 2/10/16, JLL



O.D.O.T. DISTRICT 2 SURVEY OFFICE

PERSONNEL

REFERENCE NO. 8

SHEET 11 OF 20

NOTES BROMBACH

H.C. BARNHISEL

R.C. RYALL

DRAWN: CANTERBURY

DATE 4-30-03

WEATHER PT. CLOUDY

TEMP. +60°

ROUTE S.R. #108

COUNTY HENRY

TOWNSHIP PLEASANT

SECTION 11

T 3 N R 6 E

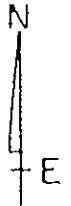
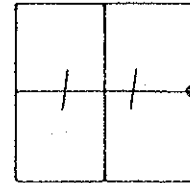
TYPE MONUMENT P.K. WASHER

ON SURFACE - BELOW SURFACE

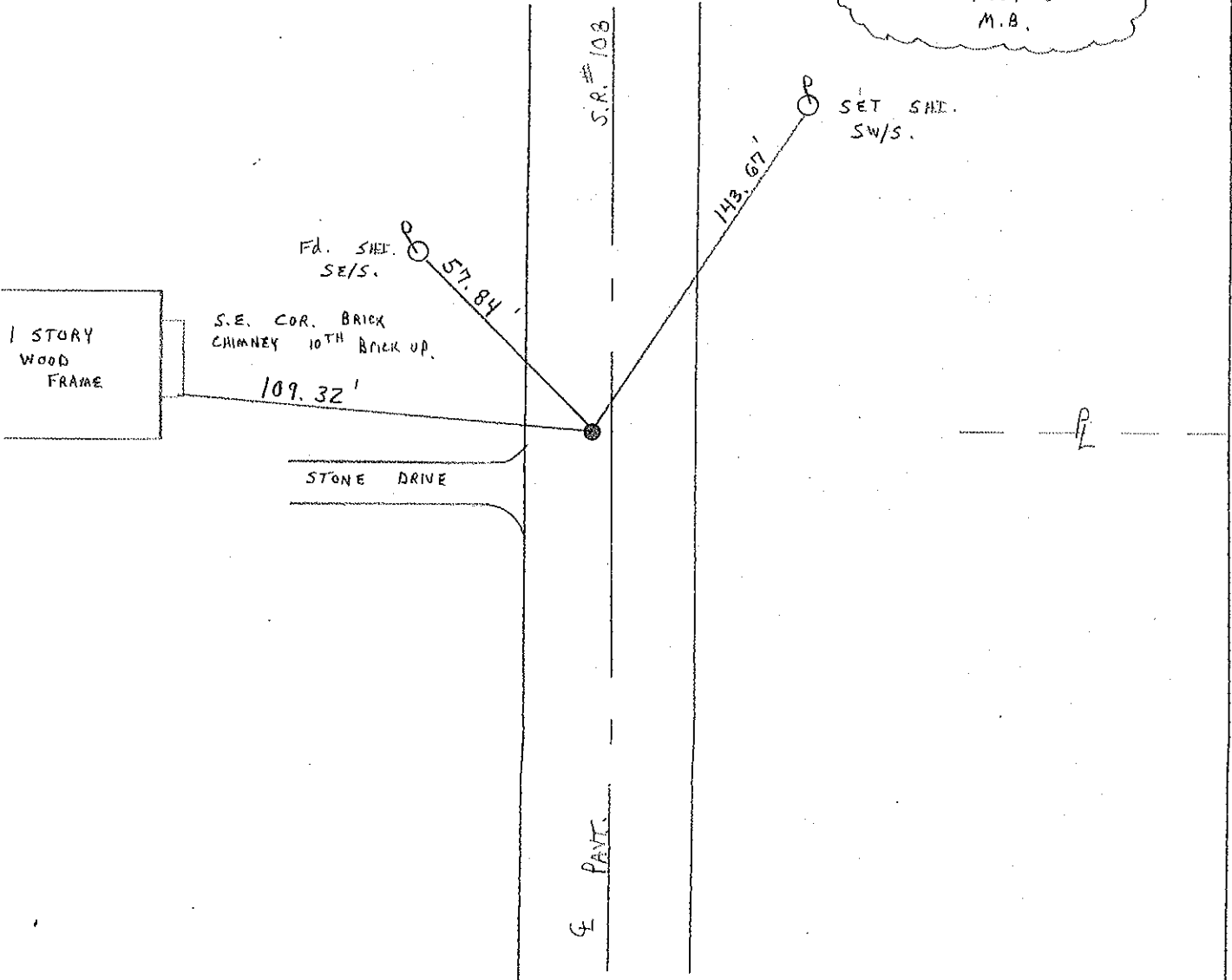
LEFT - ¢ PAW'T. - RIGHT 1.5' LT &

8.4' TO LT. EDGE PAVEMENT

S.L.M. 238 + 52



RESET MAG/WASHER  
10/30/03  
M.B.



# O.D.O.T. DISTRICT 2 SURVEY OFFICE

PERSONNEL

REFERENCE NO. 8

SHEET 10 OF 54

NOTES LOEARKE

H.C. CURTIS

DATE 7-21-92

ROUTE S.R. 108

R.G. ROMERO

WEATHER Pt Cloudy

COUNTY HENRY

FALKOWSKI

TEMP. +73

TOWNSHIP PLEASANT

SECTION 11

T. 3 N. 6 E.

Reset 9-29-92

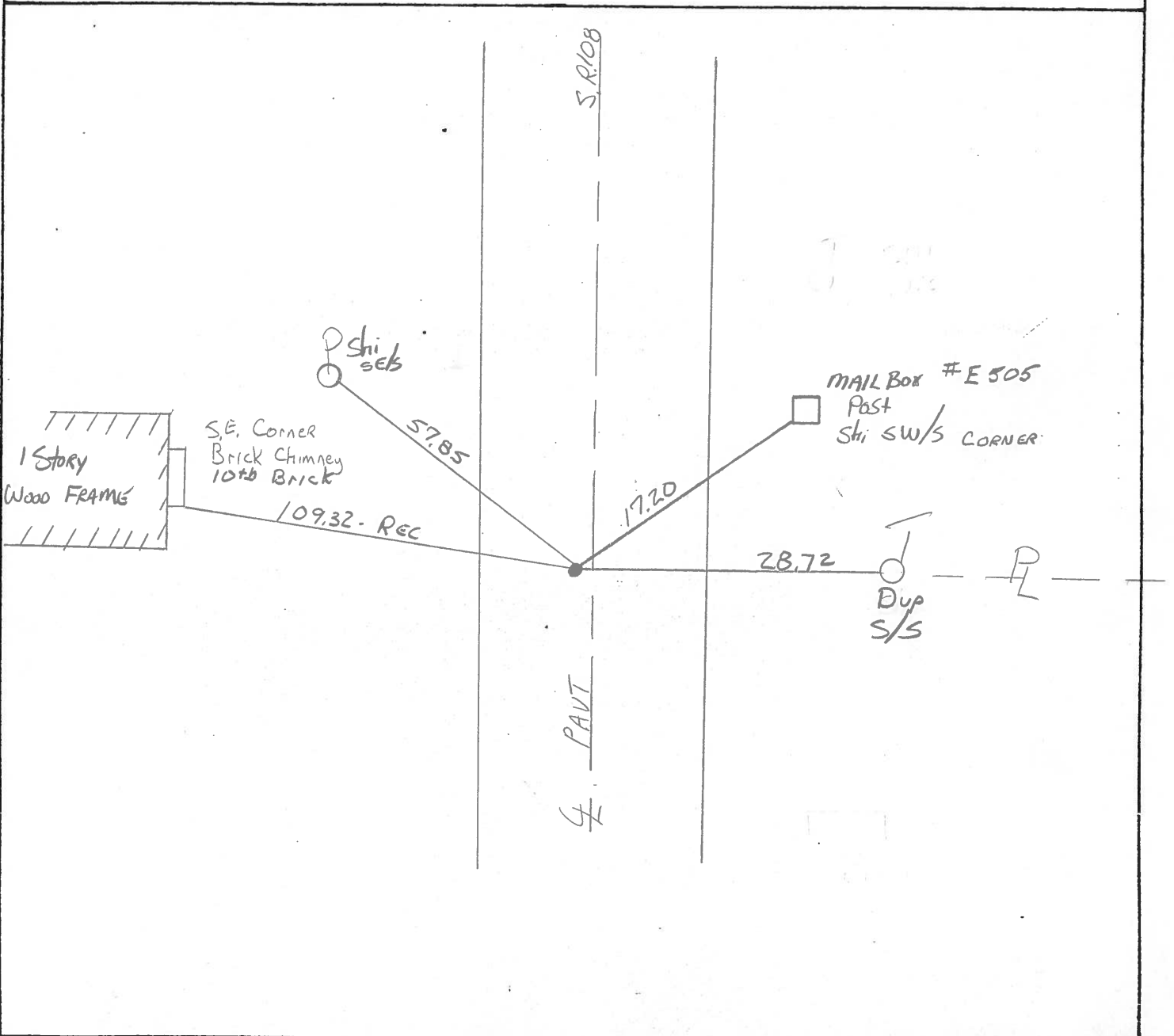
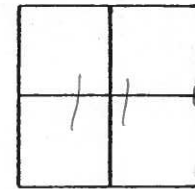
TYPE MONUMENT P.K. Nail / WASHER

ON SURFACE - BELOW Yes

LEFT - PAV'T. - RIGHT 20

8.2 TO Lt EDGE PAVEMENT

S.L.M. 238+52



County HENRY S.R. 108

Township Pleasant

Section 11

T3N, R16E

Personnel Barnhisel

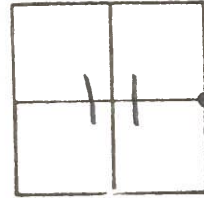
Loehrke H.C.

Householder R.C.

Date 5-2-84

Weather clear

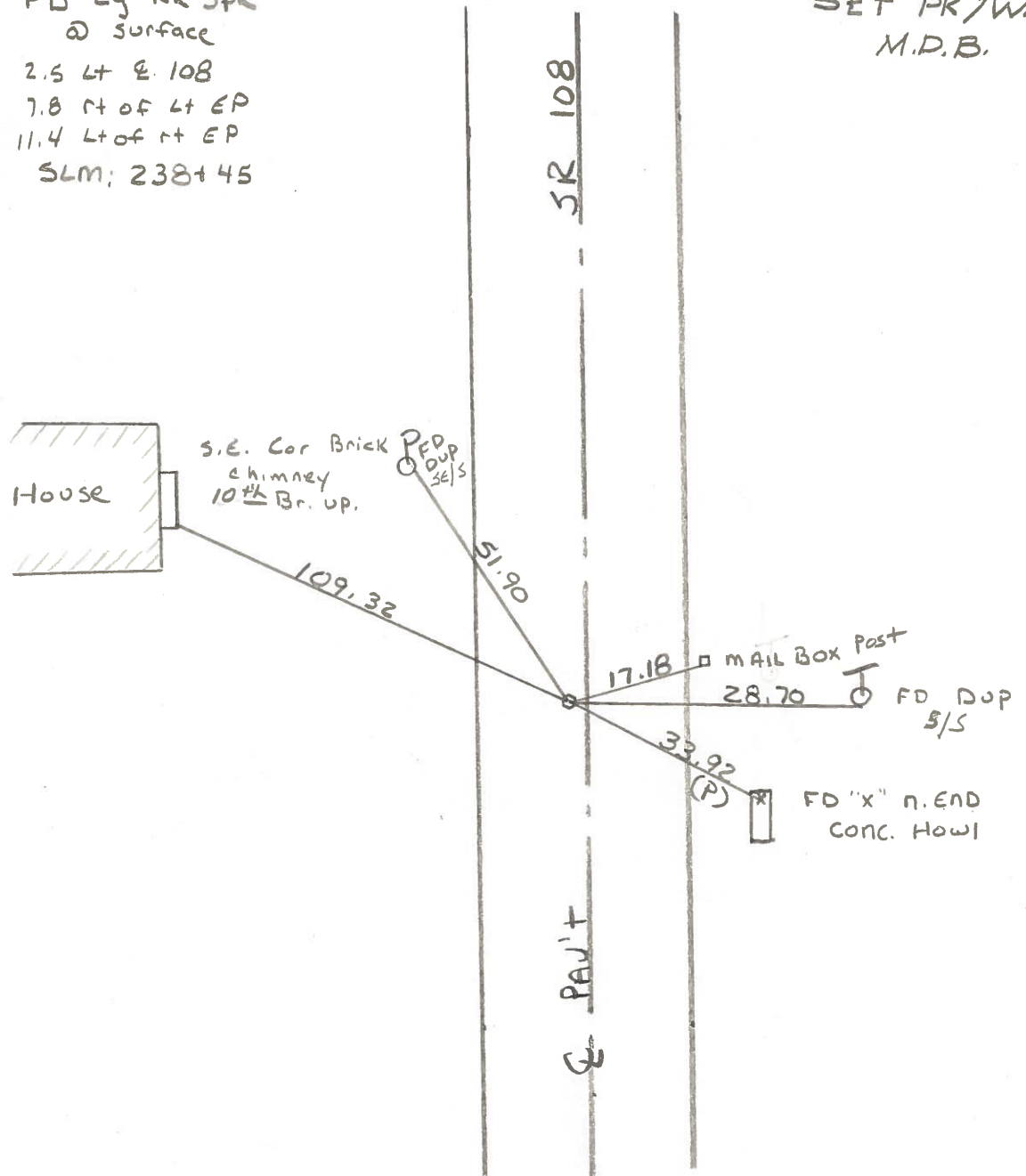
Temp. +60°



#8

FD Lg RR SPK  
@ surface  
2.5 Lt & 108  
7.8 rt of Lt EP  
11.4 Lt of rt EP  
SLM: 238145

8-27-84  
SET PK/WASHER  
M.D.B.



County Henry S.R. 108

Date 1-22-82

Township Pleasant

Weather snow - windy

Section 11

Temp. + 14°

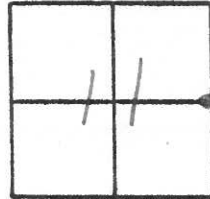
T3N, R6E

Personnel Hoffman

Householder

Loehrke

Griffith



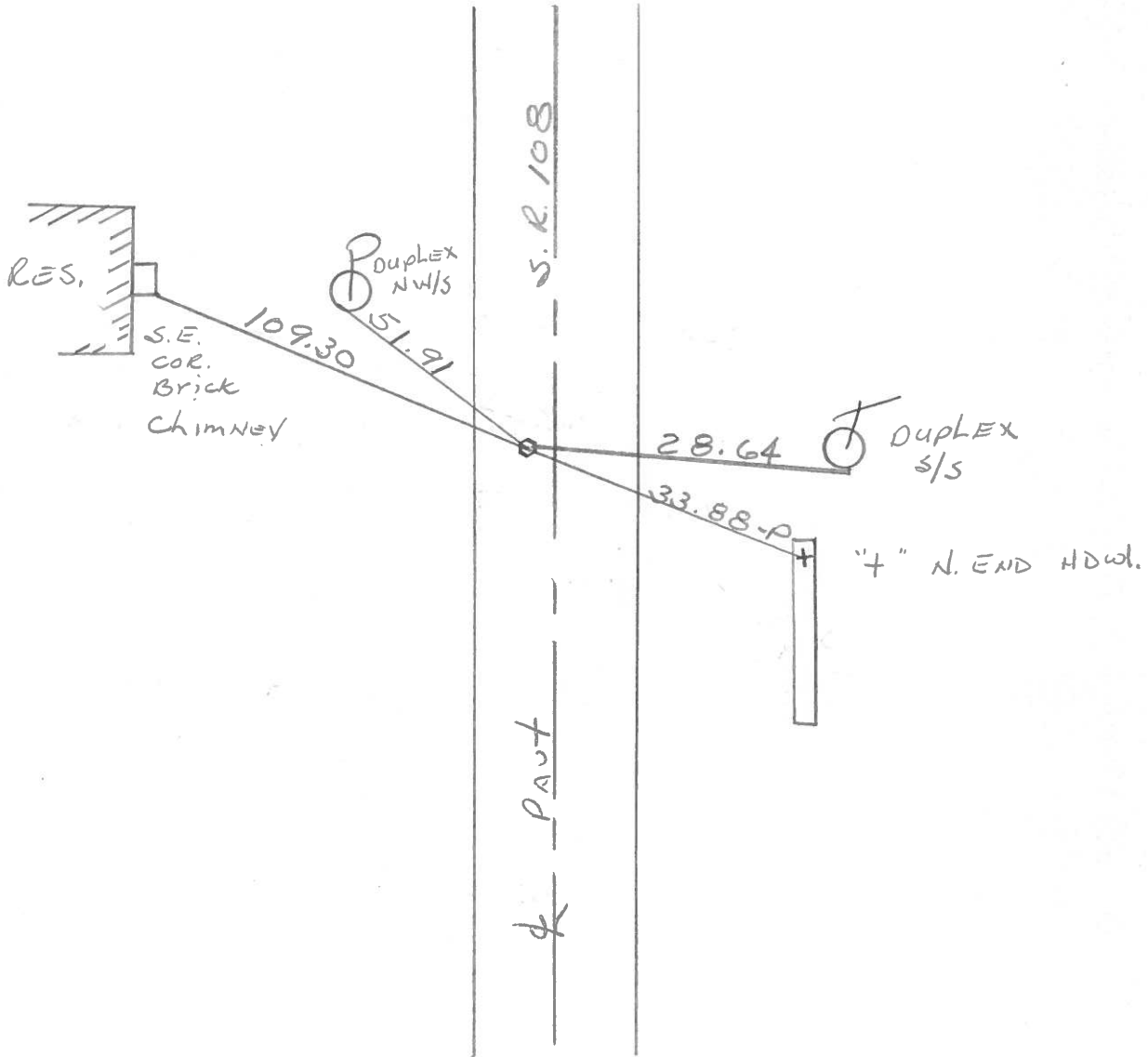
Fd. R.R. Spk. @ surface, set by County

#8

2.5' W. of & PAUT.

7.6' to W. E.P.

11.4' to E. E.P.



*Lurmade*

COUNTY HENRY

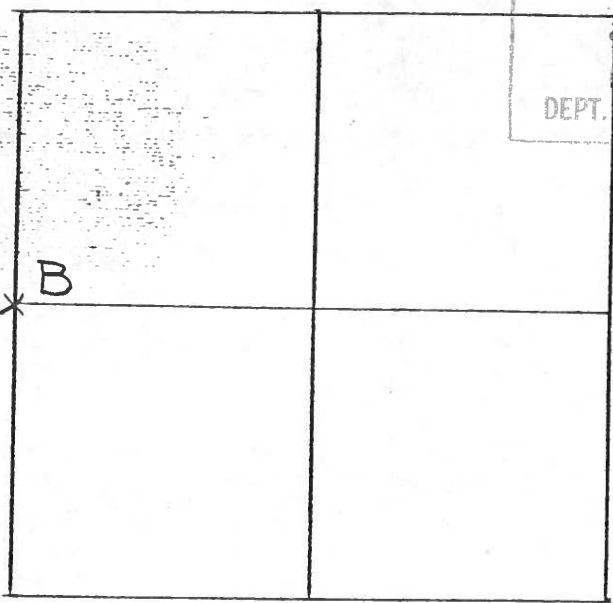
T-3-N, R-6-E

TOWNSHIP PLEASANT

SECTION 12

#8

RECEIVED  
 JAN 11 1982  
 DISTRICT NO. 2  
 DEPT. OF TRANSPORTATION




---

---

---

---

---

---

---

---



---

---

---

---

---

---

---

---

1-6-82 R.W, D.B, J.B.

B - FOUND TILE & BRICK OVER STONE (8" x 10" x 10") 23" BELOW ROAD SURFACE. PLACED CENTER PUNCHED R.R. SPIKE ON SURFACE OVER HIGH POINT OF STONE. FOUND WOOD STAKE ON W/S STONE. P.K.'s 6' N. & W.  
 109.30' N.W. TO S.E. COR. BRICK CHIMNEY  
 51.91' N.W. TO DUPLEX NE/S ♂  
 28.64' E. TO DUPLEX S/S ♂  
 33.88' S.E. TO "T" E. END CONC. HEADWALL. (P)