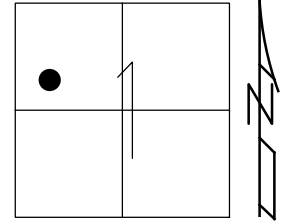


O.D.O.T. DISTRICT 2 SURVEY OFFICE (USE ONLY)

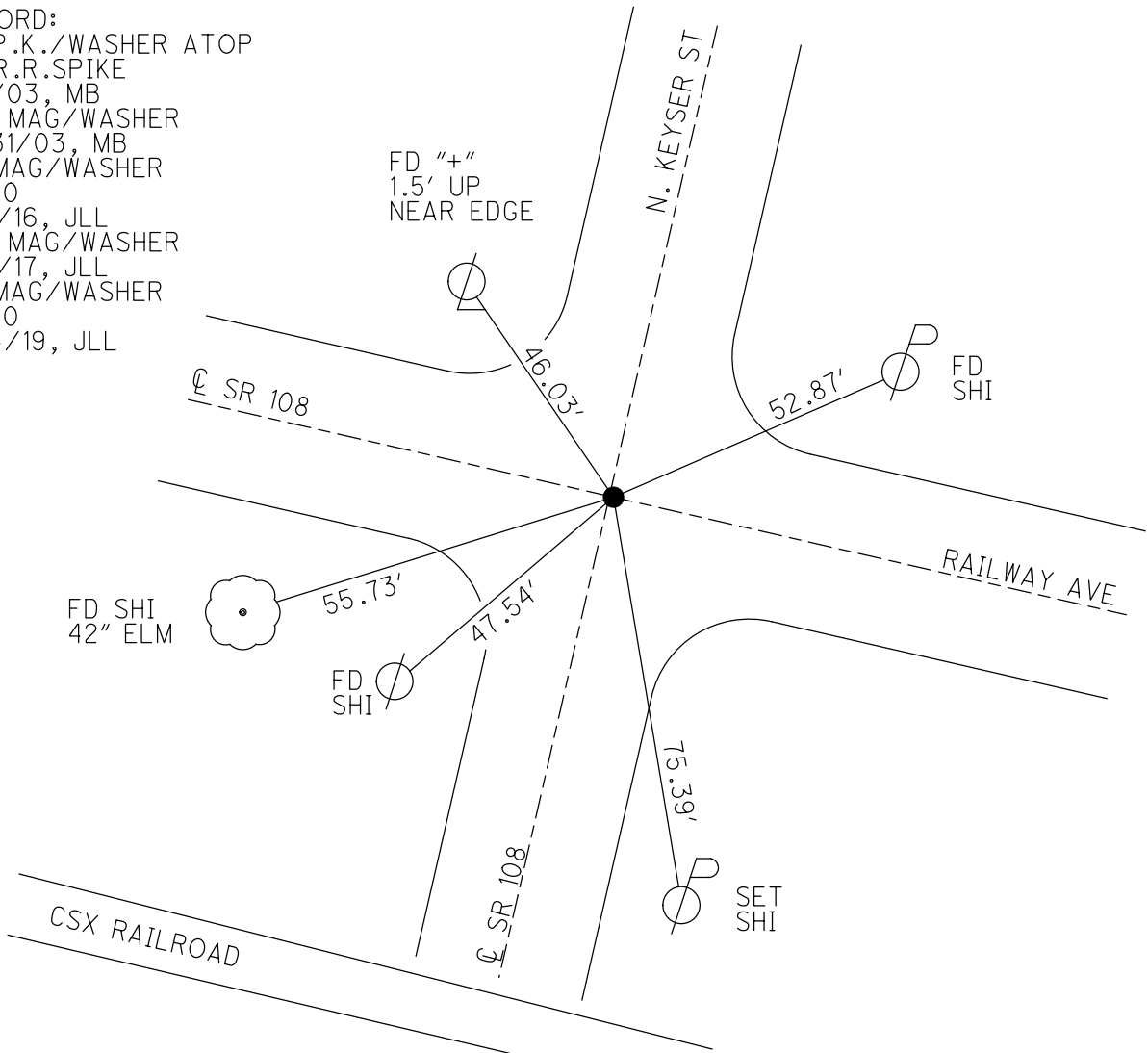
PERSONNEL _____ REFERENCE NO. 10 SHEET 13 OF 21
 NOTES GARRETT DATE 7/7/20 ROUTE SR 108
 H.C. AUBLE WEATHER SUNNY COUNTY HENRY
 R.C. MAHLER TEMP. 91° TOWNSHIP PLEASANT
 DWG BY NIESE PID 95739 SECTION 1
 T 3 N R 6 E

TYPE MONUMENT MAG/WASHER
 ON SURFACE - ~~BELOW~~ ON
 OFFSET Q PAVEMENT ON LT : RT
- TO - EDGE PAVEMENT
 STATION: 303+03.05



HORZ.DATUM: NAD83 (2011) GEOID: NAVD88 2012A
 GRID: NORTHING: 580760.405 EASTING: 1520552.513

RECORD:
 FD P.K./WASHER ATOP
 SM.R.R.SPIKE
 5/1/03, MB
 SET MAG/WASHER
 10/31/03, MB
 FD MAG/WASHER
 REF10
 2/4/16, JLL
 SET MAG/WASHER
 8/4/17, JLL
 FD MAG/WASHER
 REF10
 2/14/19, JLL

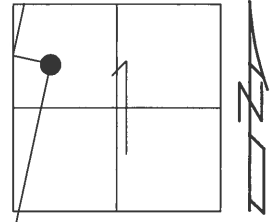


O.D.O.T. DISTRICT 2 SURVEY OFFICE (USE ONLY)

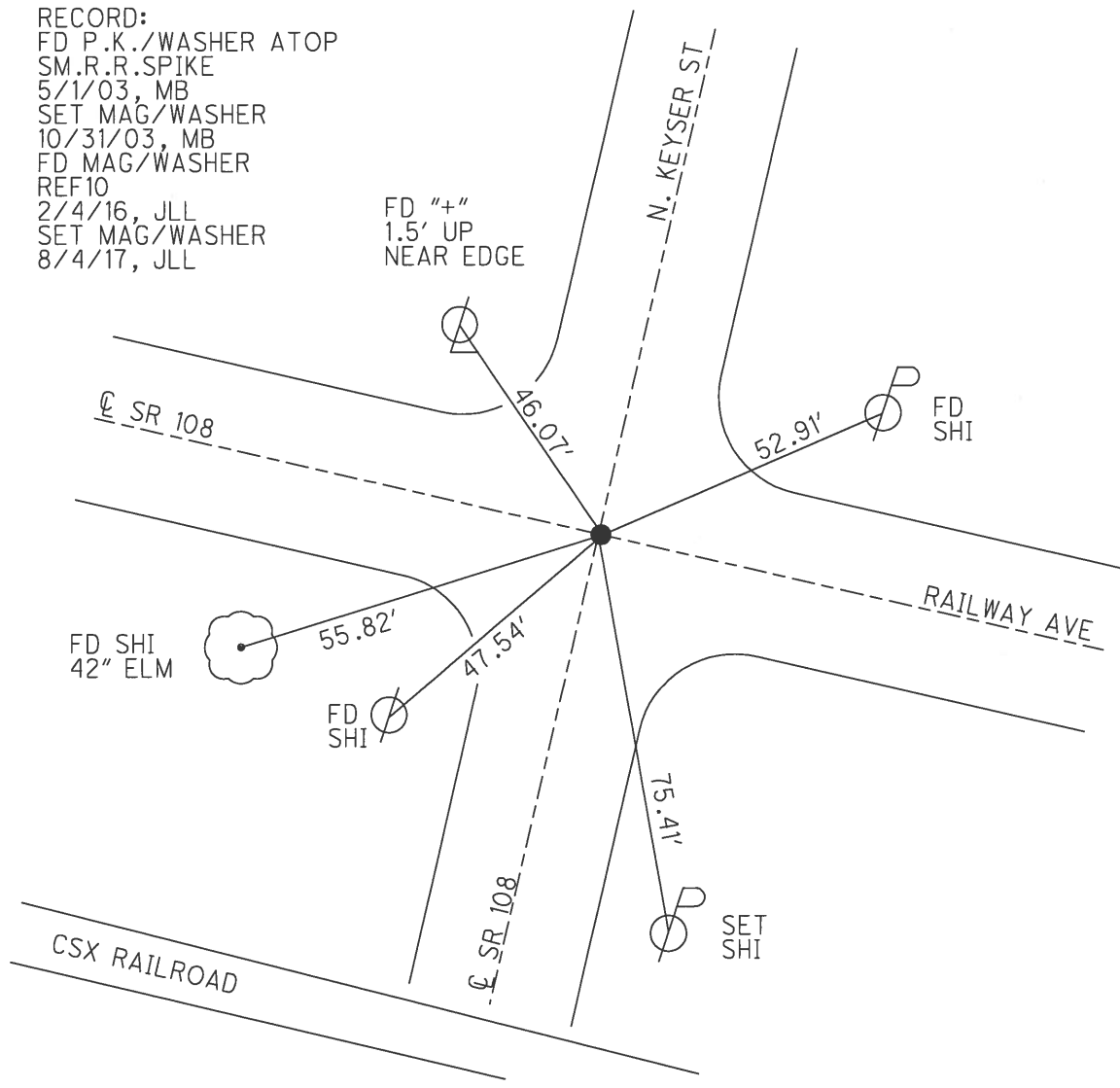
PERSONNEL _____ REFERENCE NO. 10 SHEET 6 OF 16

NOTES	<u>HELDMAN</u>	DATE	<u>4/26/17</u>	ROUTE	<u>SR 108</u>
H.C.	<u>LEU</u>	WEATHER	<u>PTLY CLOUDY</u>	COUNTY	<u>HENRY</u>
R.C.	<u>HELDMAN</u>	TEMP.	<u>63°</u>	TOWNSHIP	<u>PLEASANT</u>
				SECTION	<u>1</u>
				T	<u>3</u> N
				R	<u>6</u> E

TYPE MONUMENT MAG/WASHER
 ON SURFACE - ~~BELOW~~ ON
 LEFT - ☉ PAV'T - RIGHT ON
- TO - EDGE PAVEMENT
 S.L.M. 304+01.55
 Grid: Northing: 580760.405 Easting: 1520552.513



RECORD:
 FD P.K./WASHER ATOP
 SM.R.R.SPIKE
 5/1/03, MB
 SET MAG/WASHER
 10/31/03, MB
 FD MAG/WASHER
 REF10
 2/4/16, JLL
 SET MAG/WASHER
 8/4/17, JLL



O.D.O.T. DISTRICT 2 SURVEY OFFICE

PERSONNEL

REFERENCE NO. 10

SHEET 13 OF 20

NOTES BRUMBAUGH

H.C. BARNHISEL

R.C. RYALL

DRAWN BY: CANTERBURY

DATE 5/1/03

WEATHER CLOUDY

TEMP. +68°

ROUTE S.R. # 108

COUNTY HENRY

TOWNSHIP PLEASANT

SECTION 1

T 3 N R 6 E

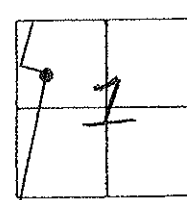
TYPE MONUMENT P.K. NAIL

ON SURFACE - BELOW SURFACE

LEFT - ☐ PAV'T. - ☐ RIGHT ☐

TO ☐ EDGE PAVEMENT

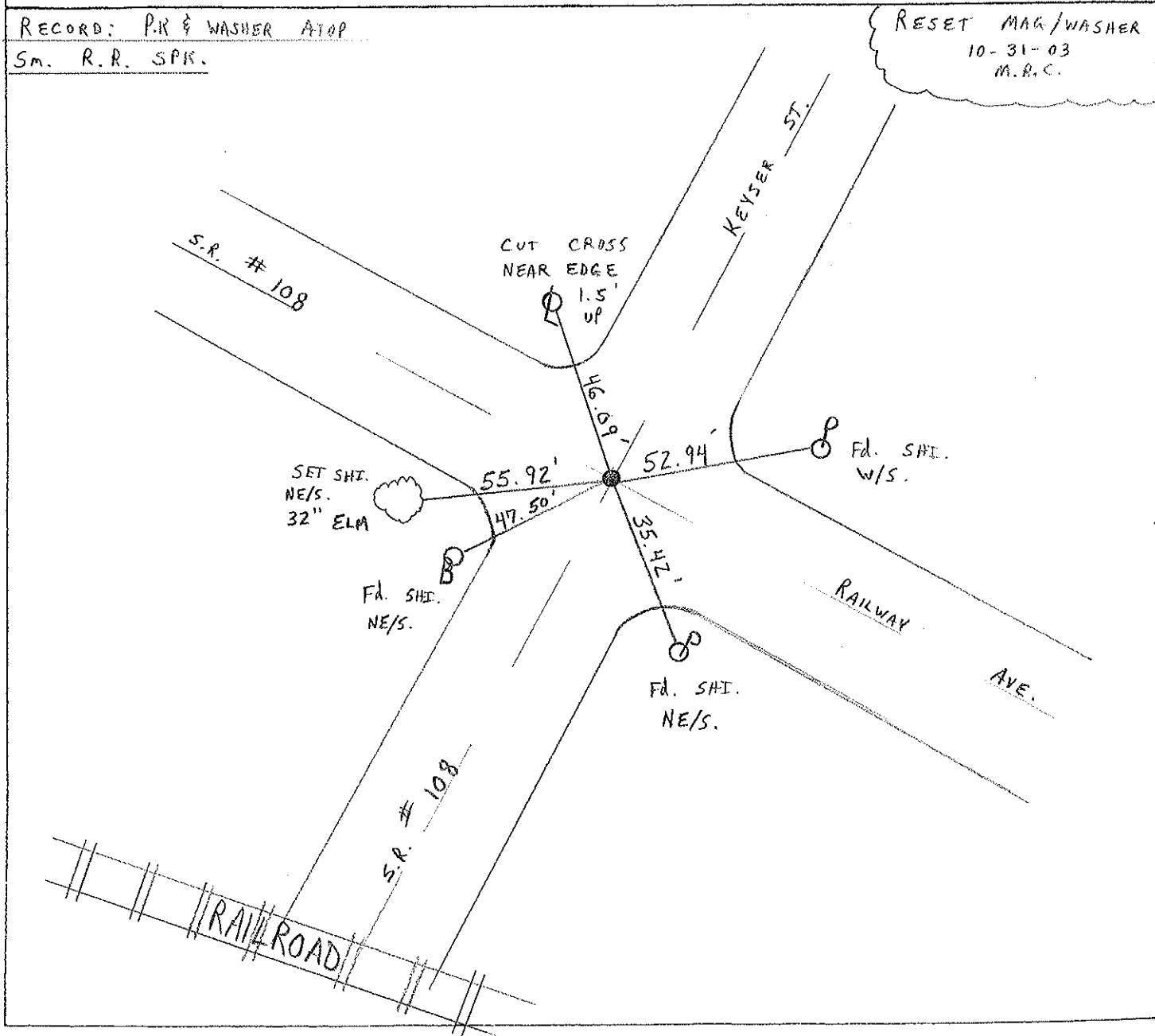
S.L.M. 302 + 94



RECORD: P.K. & WASHER ATOP

Sm. R.R. SPK.

RESET MAG/WASHER
10-31-03
M.R.C.



O.D.O.T. DISTRICT 2 SURVEY OFFICE

PERSONNEL

REFERENCE NO. 10

SHEET 12 OF 54

NOTES LOE HAKE

H.C. CURTIS

R.C. ROMERO

FALKOWSKI

DATE 8-14-92

WEATHER Cloudy

TEMP. + 68

ROUTE S.R. 108

COUNTY Henry

TOWNSHIP Pleasant

SECTION 1

T3 N R 6 E

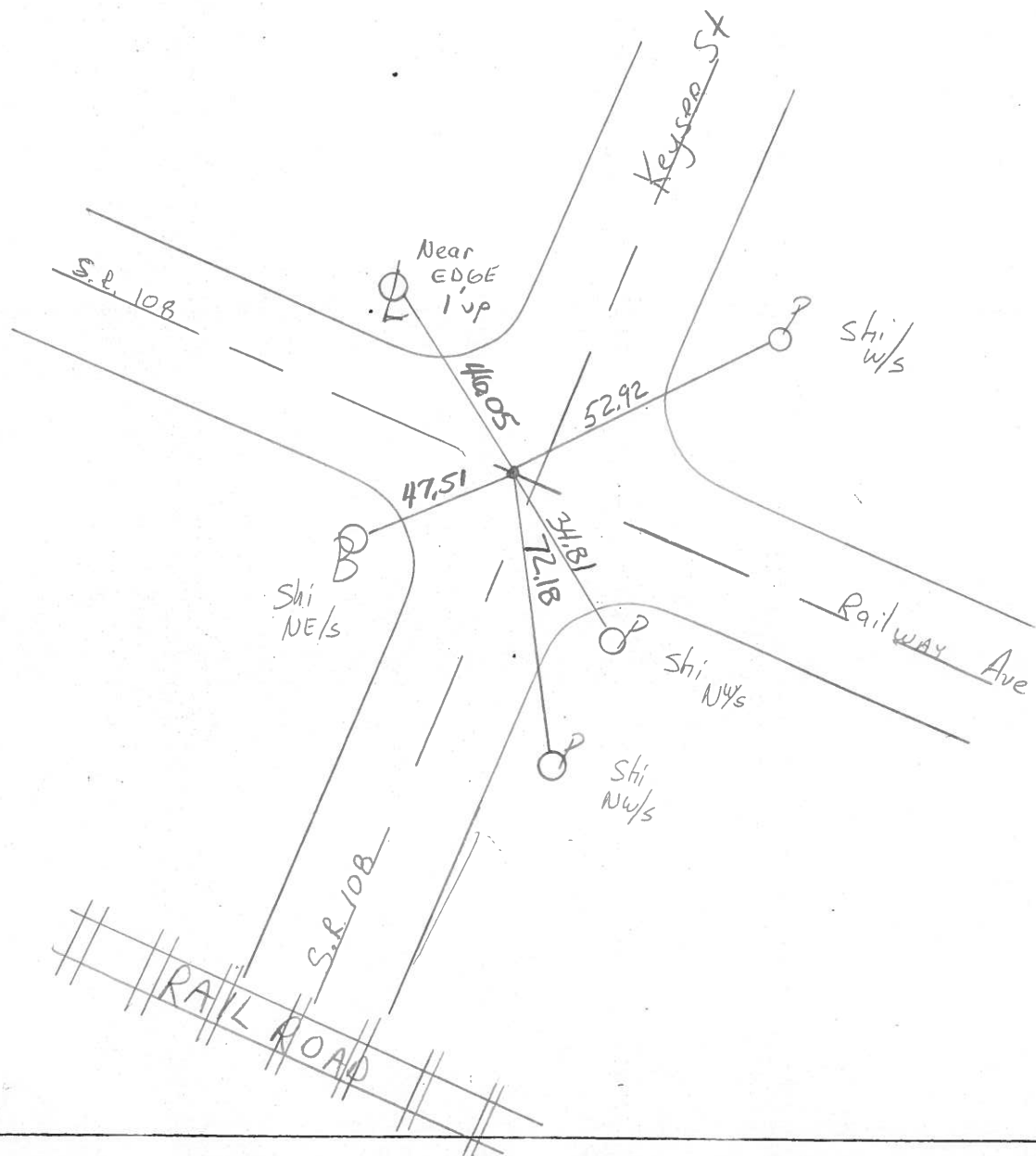
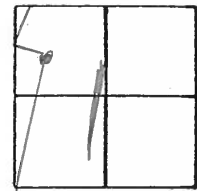
TYPE MONUMENT Sm. R.R. Spike ^{Set} P.K. & WASHGR

ON SURFACE - BELOW Yes ₉₋₂₉₋₉₂

~~LEFT~~ - ~~C~~ PAV'T. - RIGHT Yes

TO EDGE PAVEMENT

S.L.M. 302+94



County Henry S.R. 108

Township Pleasant

Section 1

T3N, R6E

Personnel Barnhisel

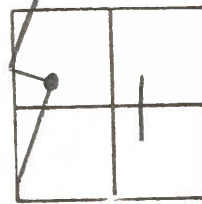
Loehrke H.C

Householder R.C

Date 5-2-84

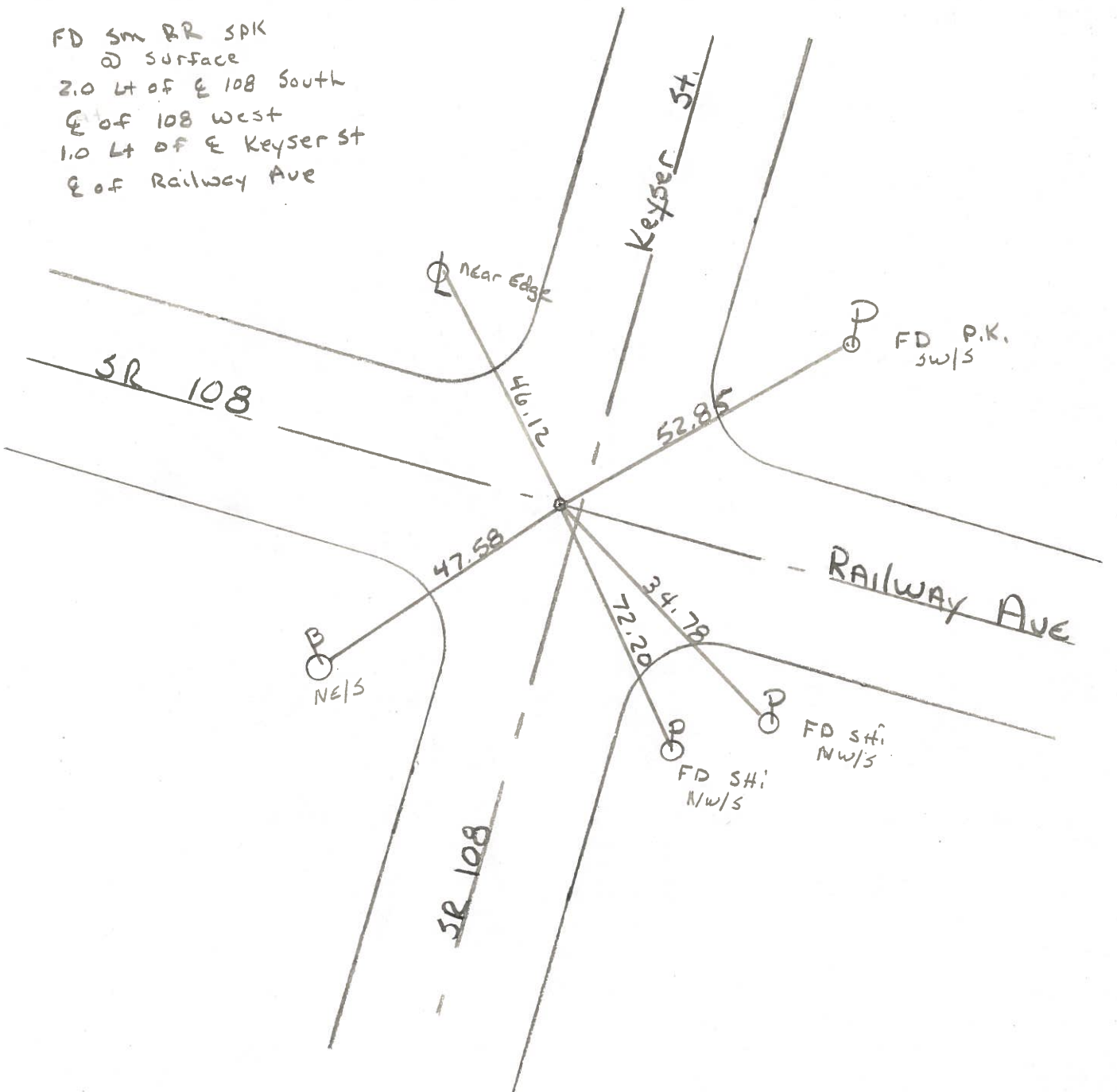
Weather Clear

Temp. +60°



10

FD Sm RR SPK
@ surface
2.0 Lt of E 108 South
E of 108 West
1.0 Lt of E Keyser St
E of Railway Ave



Q.D.O.T. DISTRICT 2 SURVEY OFFICE

Sht. 9 of 11

S.R. 108

County HENRY

Date 8-2-78

Township PLEASANT

Weather CLOUDY

Section HOLGATE

Temp. +83°

T N, R E

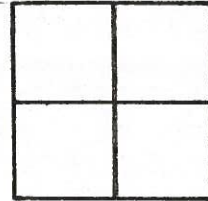
Personnel BURNSIDE

SMITH

BOWERS

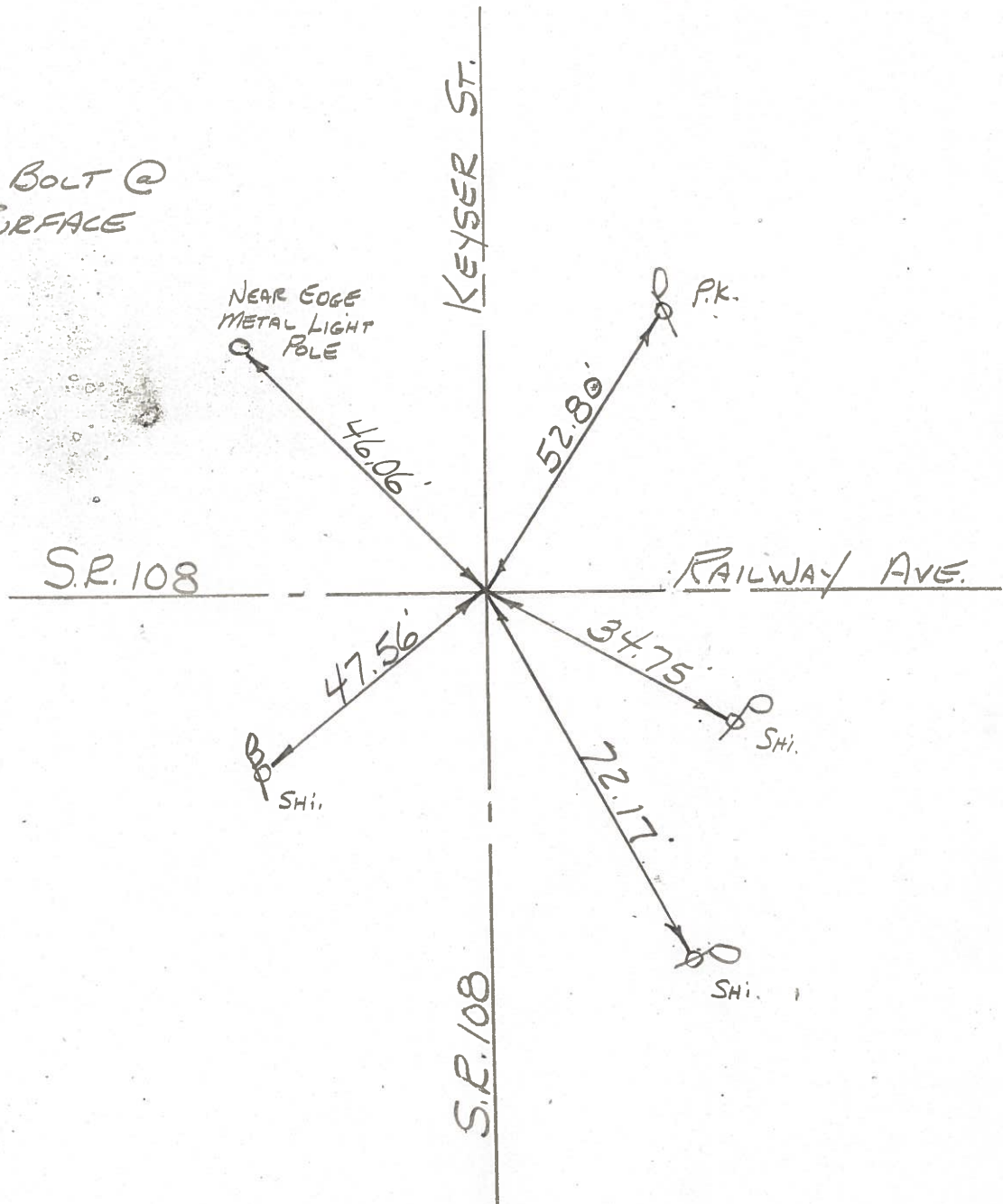
KNAPE

MEAD



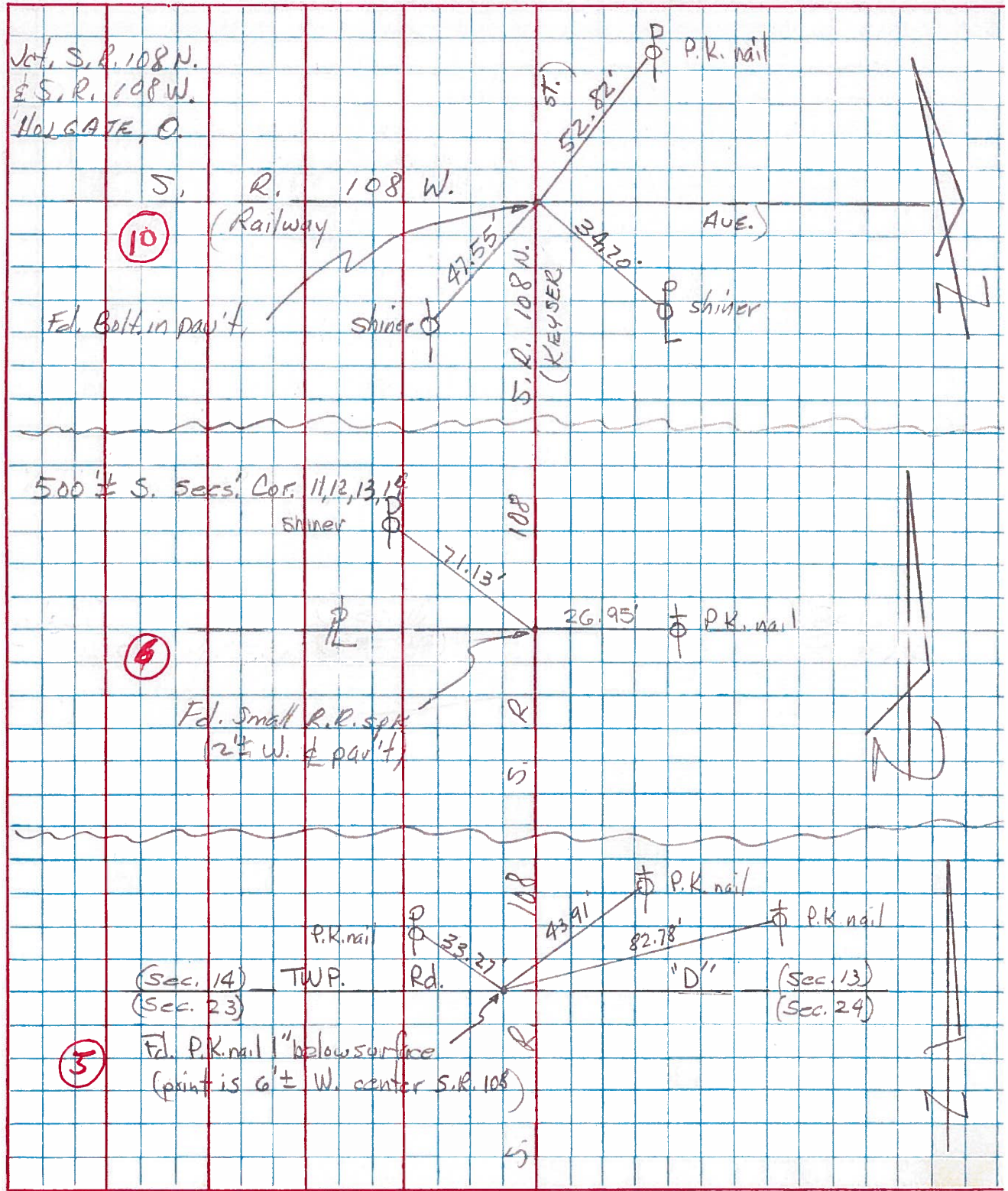
10

FD. I. BOLT @
SURFACE



PERSONNEL	TITLE	PERSONNEL	TITLE	COUNTY	DATE
Tomsic				HENRY	July 15, 1974
Neuser				S. R. 108	WEATHER
Granata				SEC. Pleasant Twp	TEMP.

DESCRIPTION LEFT CENTER LINE RIGHT JOB NO.



PERSONNEL TITLE PERSONNEL TITLE

Beach
Armbruster
Knappe

COUNTY Henry DATE 15 Aug. '58

S. R. 108 WEATHER 10-24-60

SEC. Holgate TEMP.

DESCRIPTION CONTROL POINTS

LEFT

CENTER LINE

RIGHT

JOB NO.

