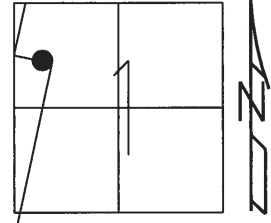


O.D.O.T. DISTRICT 2 SURVEY OFFICE (USE ONLY)

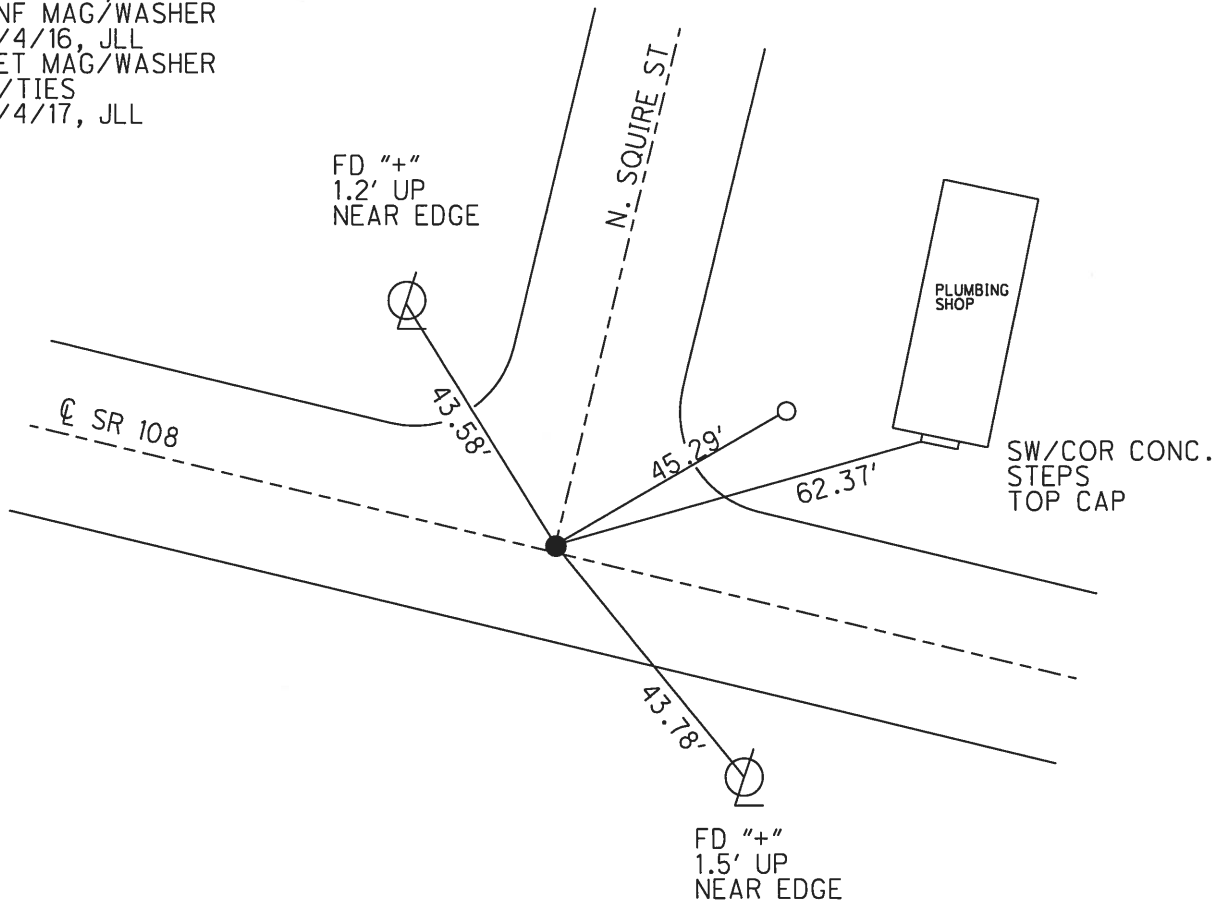
PERSONNEL _____ REFERENCE NO. 10 A SHEET 7 OF 16
 NOTES RHOADES DATE 8/4/17 ROUTE SR 108
 H.C. LEU WEATHER CLOUDY COUNTY HENRY
 R.C. CARSON TEMP. 70° TOWNSHIP PLEASANT
 _____ SECTION 1
 _____ T 3 N R 6 E

TYPE MONUMENT MAG/WASHER
 ON SURFACE - ~~BELOW~~ ON
~~LEFT~~ - ☉ PAV'T - RIGHT 0.5'
 - TO - EDGE PAVEMENT
 S.L.M. 307+59.3

Grid: Northing: 580854.254 Easting: 1520206.320



RECORD:
 SET MAG/WASHER
 10/31/03, MB
 DNF MAG/WASHER
 2/4/16, JLL
 SET MAG/WASHER
 W/TIES
 8/4/17, JLL

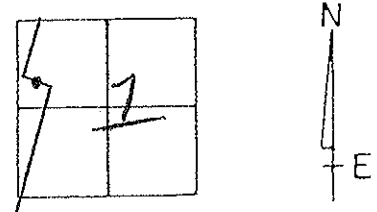


O.D.O.T. DISTRICT 2 SURVEY OFFICE

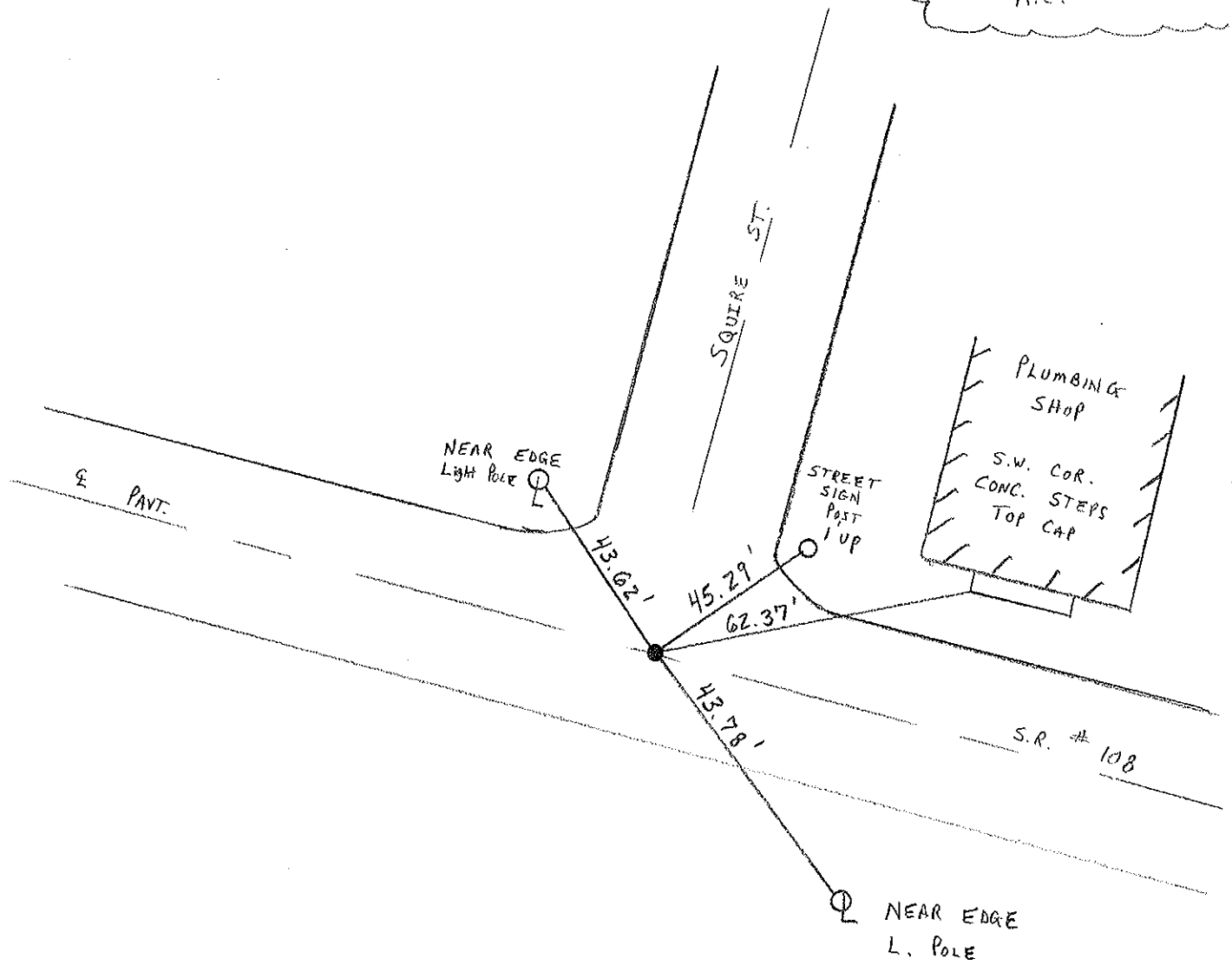
PERSONNEL _____ REFERENCE NO. 10-A SHEET 14 OF 20

NOTES BRUMBAUGH DATE 5-1-03 ROUTE S.R. # 108
 H.C. BARNHISEL WEATHER CLOUDY COUNTY HENRY
 R.C. RYALL TEMP. + 68° TOWNSHIP PLEASANT
 DRAWN: CANTERBURY SECTION 1
T 3 N R 6 E

TYPE MONUMENT P.K. & WASHER
 ON SURFACE - ~~BELOW~~ SURFACE
~~LEFT - & PAV'T. - RIGHT~~ ON &
TO EDGE PAVEMENT
 S.L.M. 306 + 52



RESET MAG / WASHER
 10-31-03
 M.C.



O.D.O.T. DISTRICT 2 SURVEY OFFICE

PERSONNEL

REFERENCE NO. 10-A

SHEET 13 OF 54

NOTES LOEHRKE

H.C. CURTIS

DATE 8-14-92

ROUTE S.R. 108

R.C. ROMERO

WEATHER Cloudy

COUNTY Henry

FALKOWSKI

TEMP. +48

TOWNSHIP Pleasant

SECTION 4

RESET 9-29-92

T3 N R 6 E

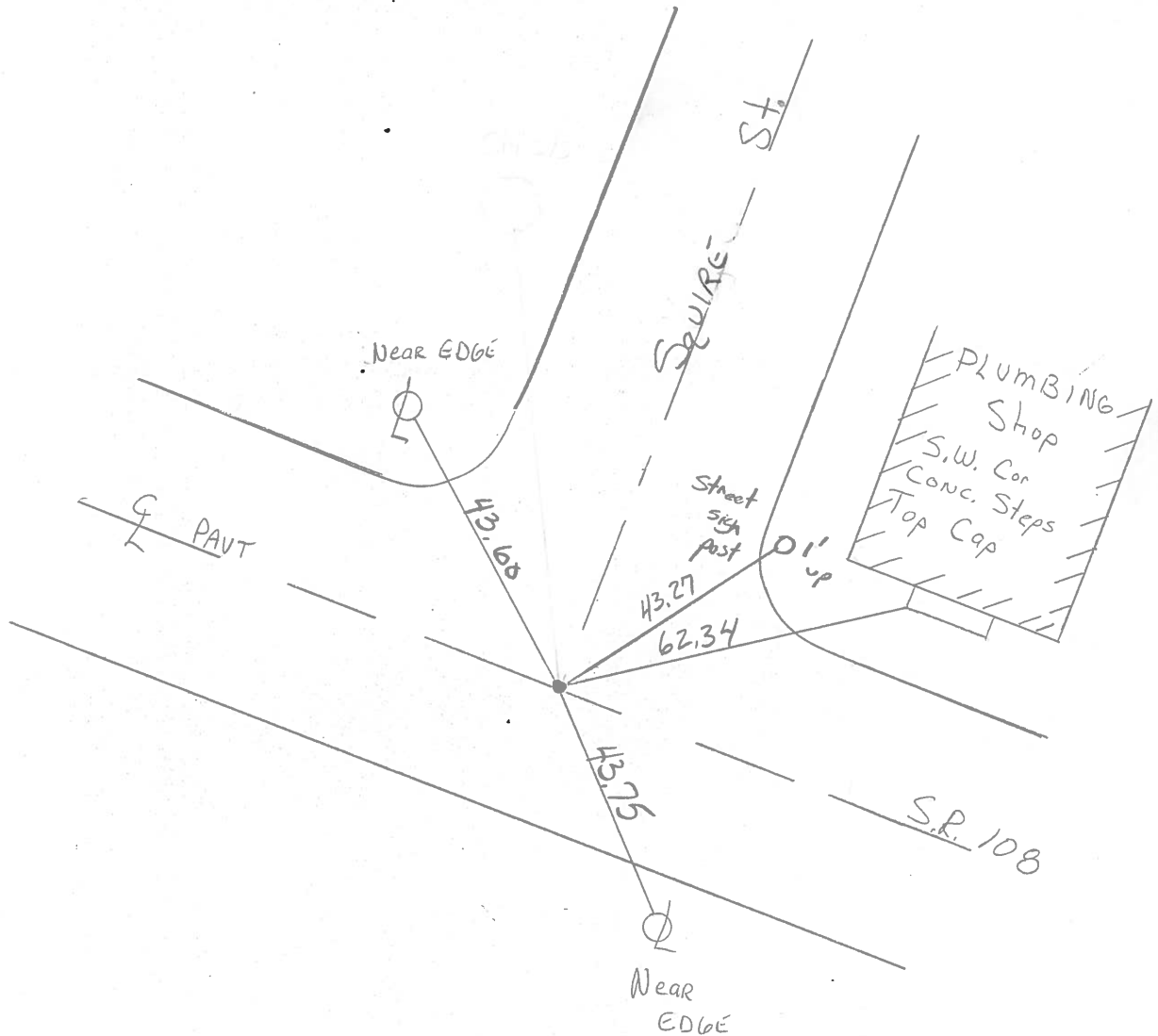
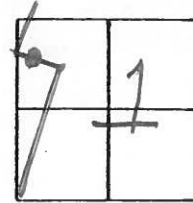
TYPE MONUMENT P.K. Nail

ON SURFACE - BELOW Yes

~~LEFT - & PAV'T. - RIGHT~~ Yes

TO EDGE PAVEMENT

S.L.M. 306 + 52



County Henry S.R. 108

Township Pleasant

Section Holgate

T3N, R6E

Personnel Barnhiser

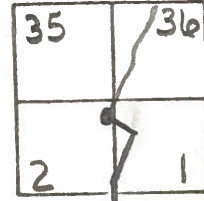
Loehrke H.C.

Householder R.C.

Date 5-2-84

Weather Clear

Temp. +60°

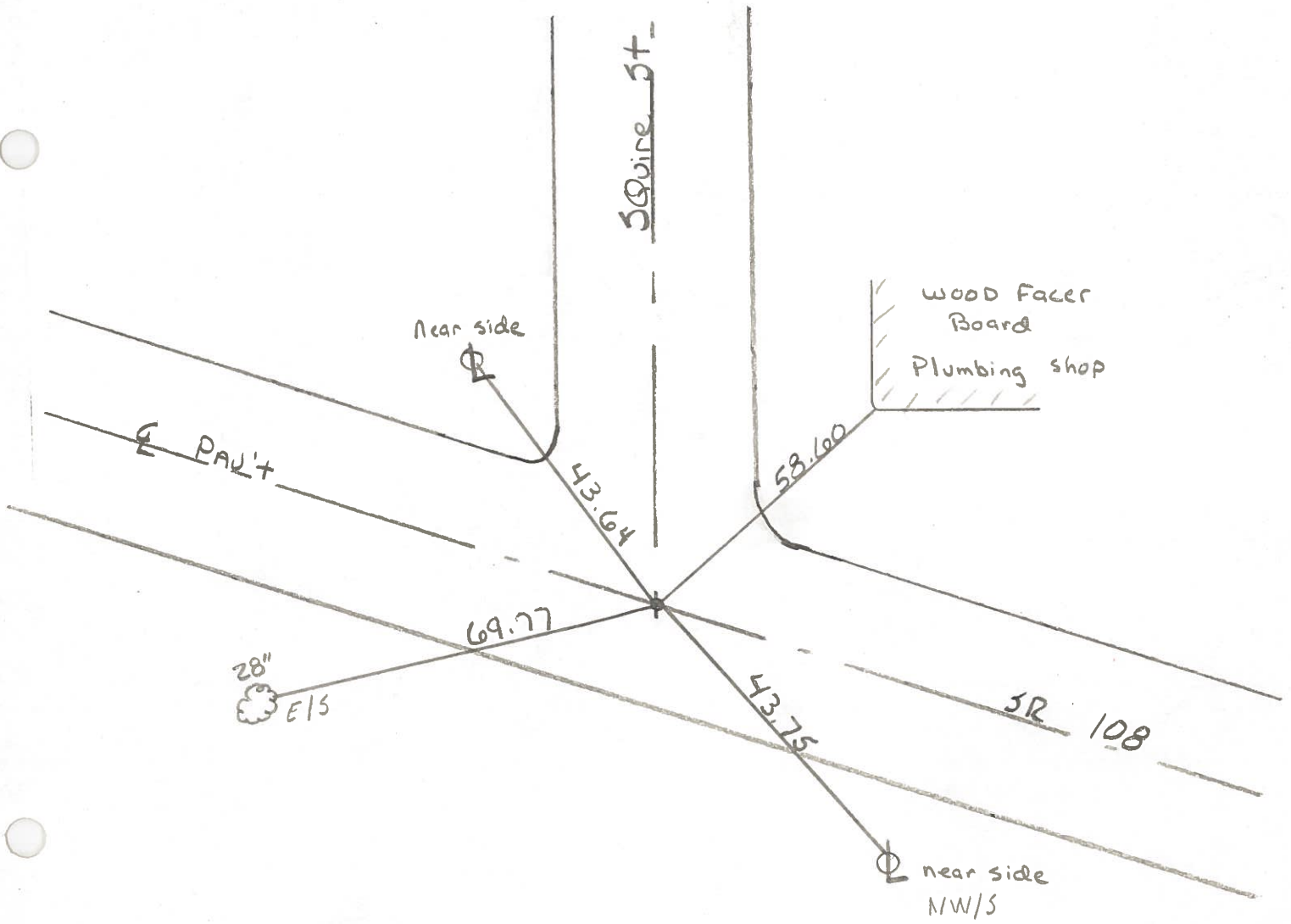


10-A

FD P.K. Nail

E of 108

E of Squire St



OD.O.T. DISTRICT 2 SURVEY OFFICE

Sht. 10 of 11
S.R. 108

County HENRY

Date 8-2-78

Township PLEASANT

Weather CLOUDY

Section HOLGATE

Temp. +83°

T N, R E

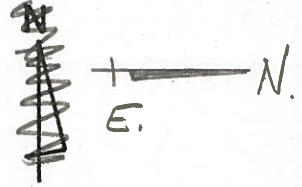
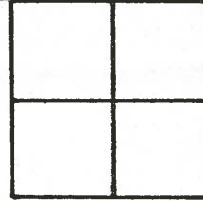
Personnel BURNSIDE

SMITH

BOWERS

KNAPE

MEAD



10-A

FD. SHANK OF
P.K. NAIL 1/2" DEEP

SH. IN 26"
MAPLE

69.77

108
AVE

43.59

NEAR SIDE
METAL LIGHT
POLE

SQUIRE ST.

43.73

NEAR SIDE
METAL LIGHT
POLE

S.R.
(RAILWAY)

58.59

CONC. NAIL IN
WOOD FACER
BOARD
PLUMBING SHOP

PERSONNEL	TITLE	PERSONNEL	TITLE	COUNTY	DATE	WEATHER	TEMP.
DMSIC				HENRY	July 15, 1979		
Newer				S. R. 108			
Granata				SEC. PLEASANT TWP.			

DESCRIPTION	LEFT	CENTER LINE	RIGHT	JOB NO.
-------------	------	-------------	-------	---------

