

O.D.O.T. DISTRICT 2 SURVEY OFFICE (USE ONLY)

PERSONNEL _____ REFERENCE NO. 11 A SHEET 10 OF 16

NOTES HELDMAN DATE 4/26/17 ROUTE SR 108
 H.C. LEU WEATHER PTLY CLOUDY COUNTY HENRY
 R.C. HELDMAN TEMP. 65° TOWNSHIP PLEASANT
 SECTION 1
 T 3 N R 6 E

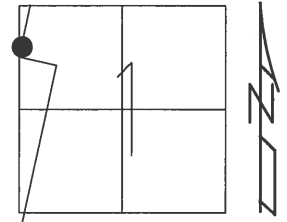
TYPE MONUMENT MAG/WASHER

ON SURFACE - ~~BELOW~~ ON

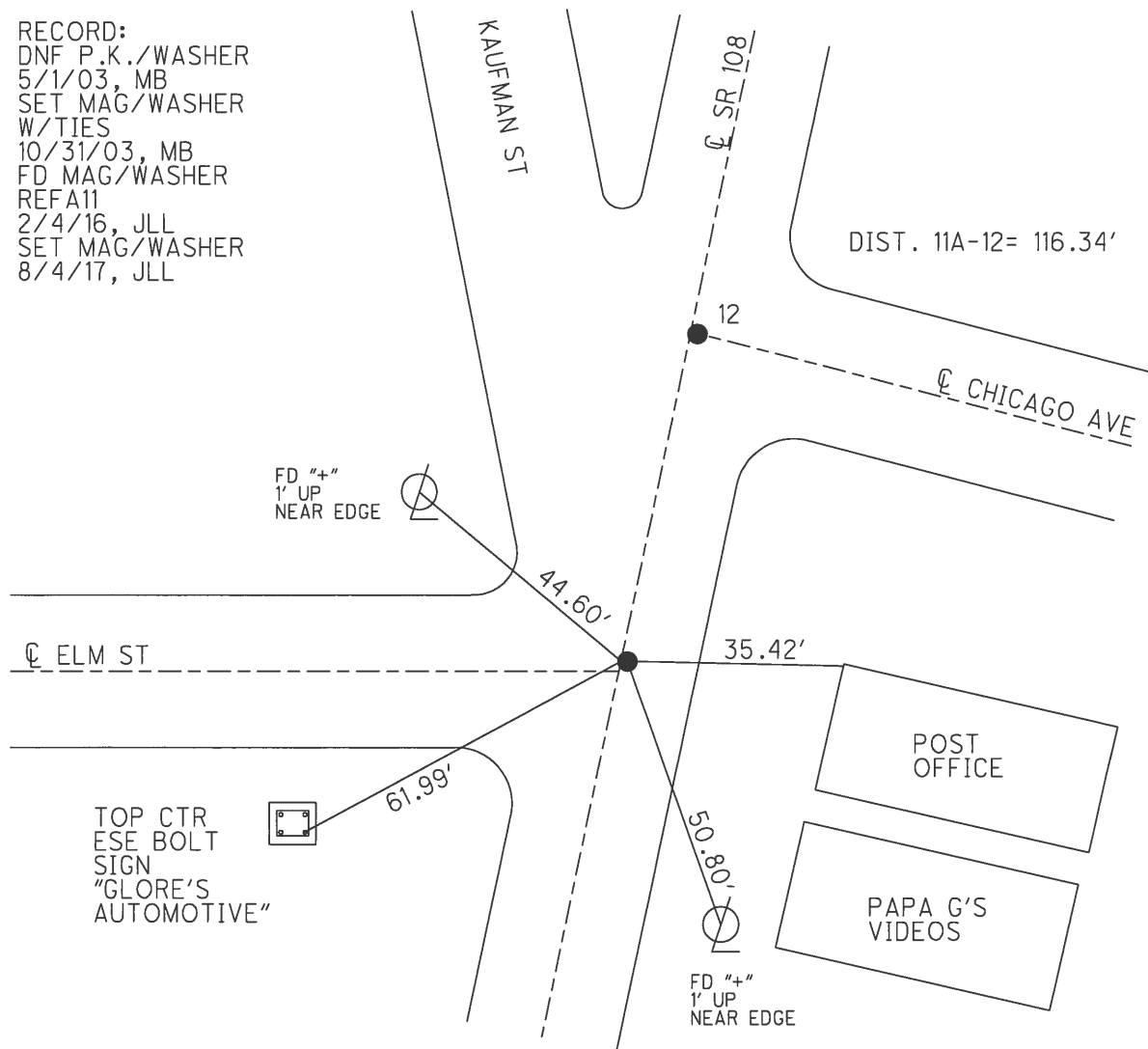
~~LEFT~~ - ☉ PAV'T - RIGHT 0.5', 1" N OF ☉ W
22.7' TO RT EDGE PAVEMENT

S.L.M. 317+03.4

Grid: Northing: 581282.836 Easting: 1519612.424



RECORD:
 DNF P.K./WASHER
 5/1/03, MB
 SET MAG/WASHER
 W/TIES
 10/31/03, MB
 FD MAG/WASHER
 REFA11
 2/4/16, JLL
 SET MAG/WASHER
 8/4/17, JLL



O.D.O.T. DISTRICT 2 SURVEY OFFICE

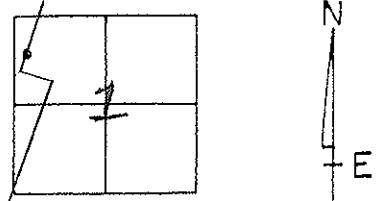
PERSONNEL _____ REFERENCE NO. 11-A SHEET 17 OF 20

NOTES BRUMBAUGH
 H.C. BARNHISEL
 R.C. RYALL
 DRAWN: CANTERBURY

DATE 5-01-03
 WEATHER Pt. CLOUDY
 TEMP. +70°

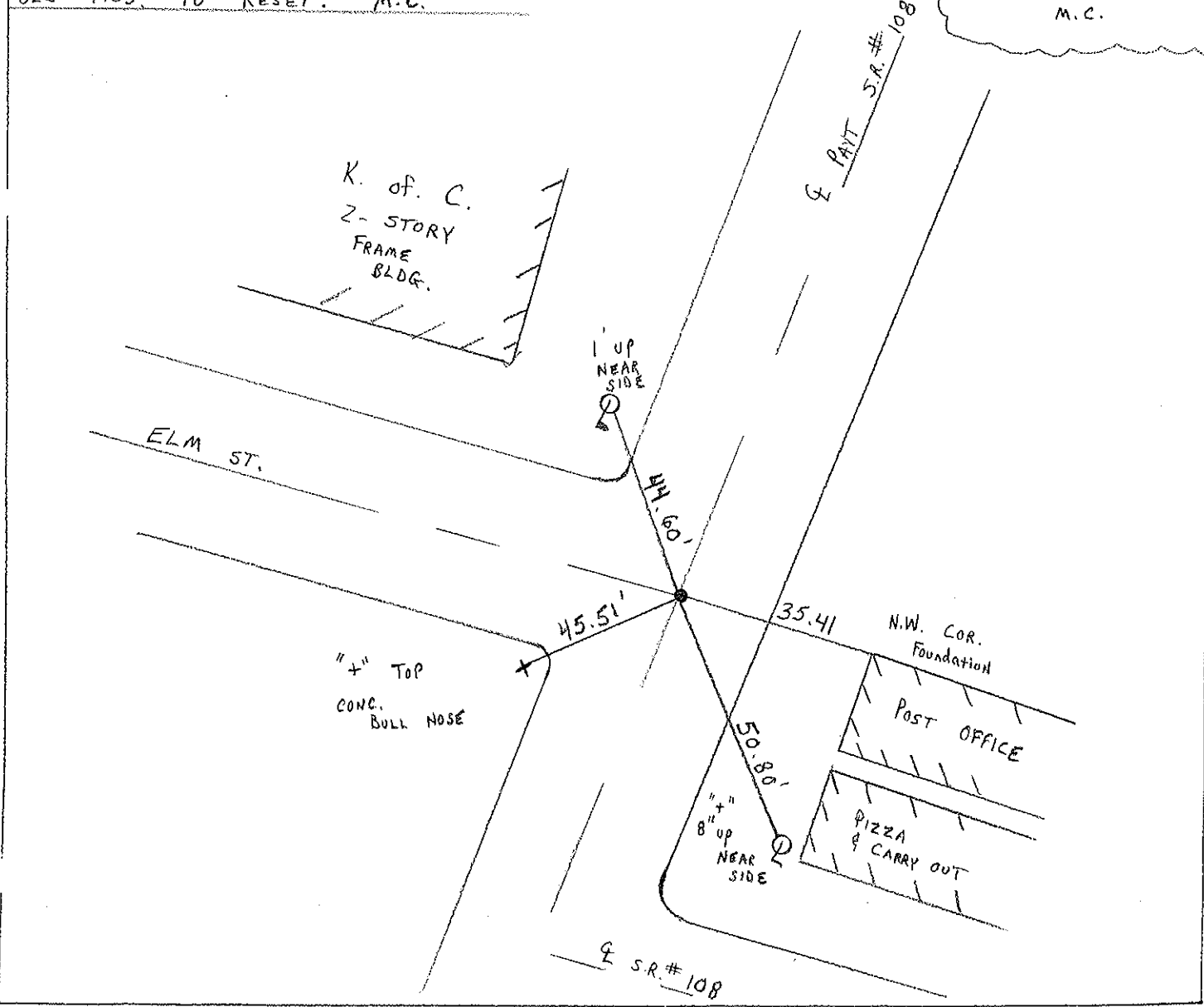
ROUTE S.R. # 108
 COUNTY HENRY
 TOWNSHIP PLEASANT
 SECTION 1
T 3 N R 6 E

TYPE MONUMENT D.N.F. RESET MAG/WASHER USING OLD TIES.
 ON SURFACE - BELOW Yes
~~LEFT~~ - PAV'T. - RIGHT 1.0' RT &
22.7' TO RT. EDGE PAVEMENT
 S.L.M. 315 + 95



NOTE: POINT GONE, AFTER PAVING USED OLD TIES TO RESET. M.C.

RESET MAG/WASHER
 10-31-03
 M.C.



O.D.O.T. DISTRICT 2 SURVEY OFFICE

PERSONNEL

REFERENCE NO. 11-A

SHEET 16 OF 54

NOTES LOEHRKE

H.C. CURTIS

DATE 8-14-92

ROUTE S.R. 108

R.C. ROMETO

WEATHER CLOUDY

COUNTY Henry

FALKOWSKI

TEMP. +70

TOWNSHIP Pleasant

SECTION 1

Reset

T3 N R 6 E

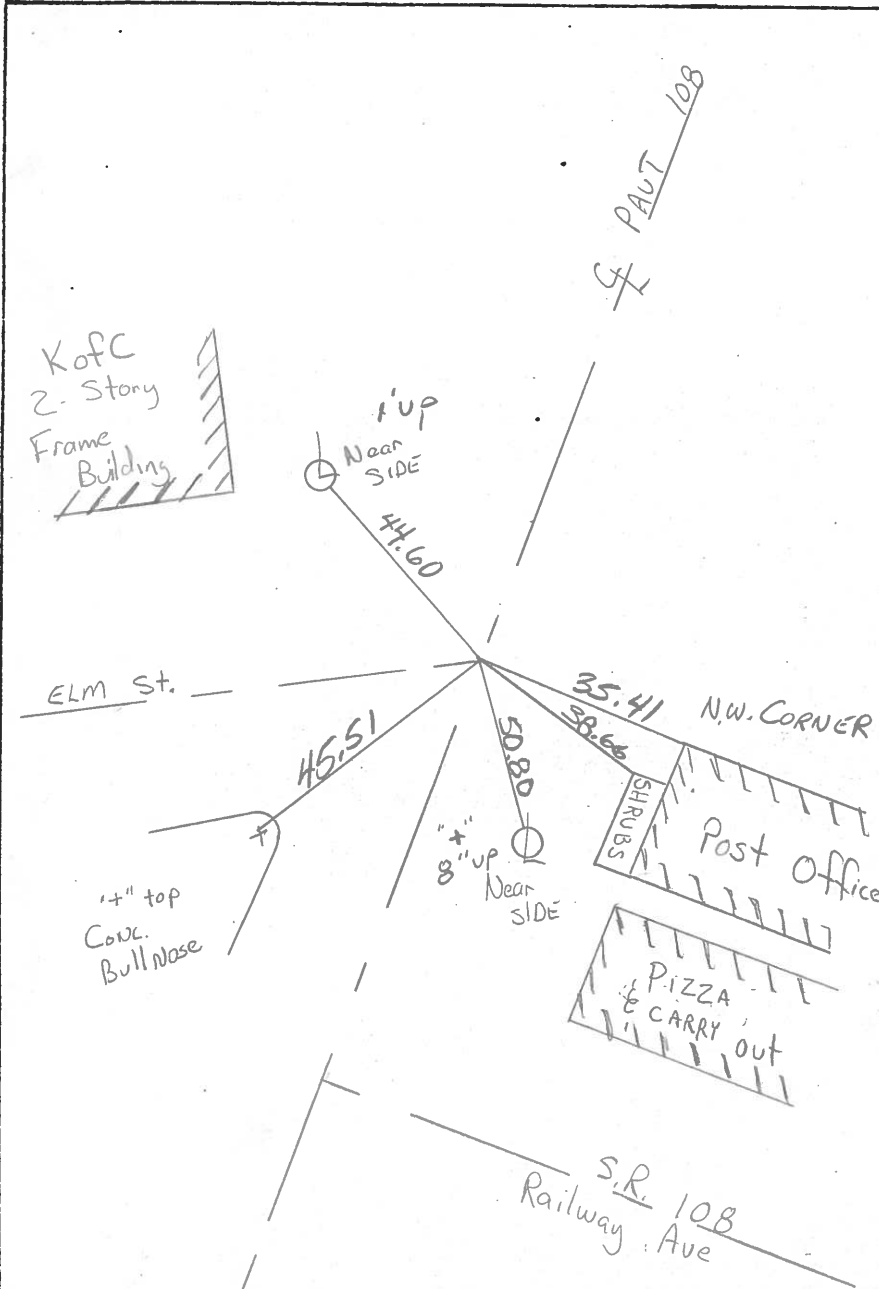
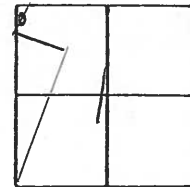
TYPE MONUMENT P.K. / WASHER 9-29-92

ON SURFACE - ~~BELOW~~ yes

~~LEFT - & PAVT.~~ - RIGHT 1.0 & S.R. 108

22.7 TO Rt EDGE PAVEMENT

S.L.M. 315+95



County HENRY S.R. 108

Township PLEASANT

Section 1

T3N, R6E

Personnel Hoffman

Loehke H.C.

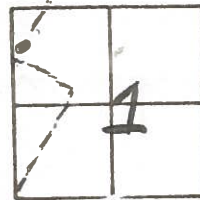
Householder R.C.

BARNHISEL Notes

Date 6-27-84

Weather PARTLY CLOUDY

Temp. +77° cloudy

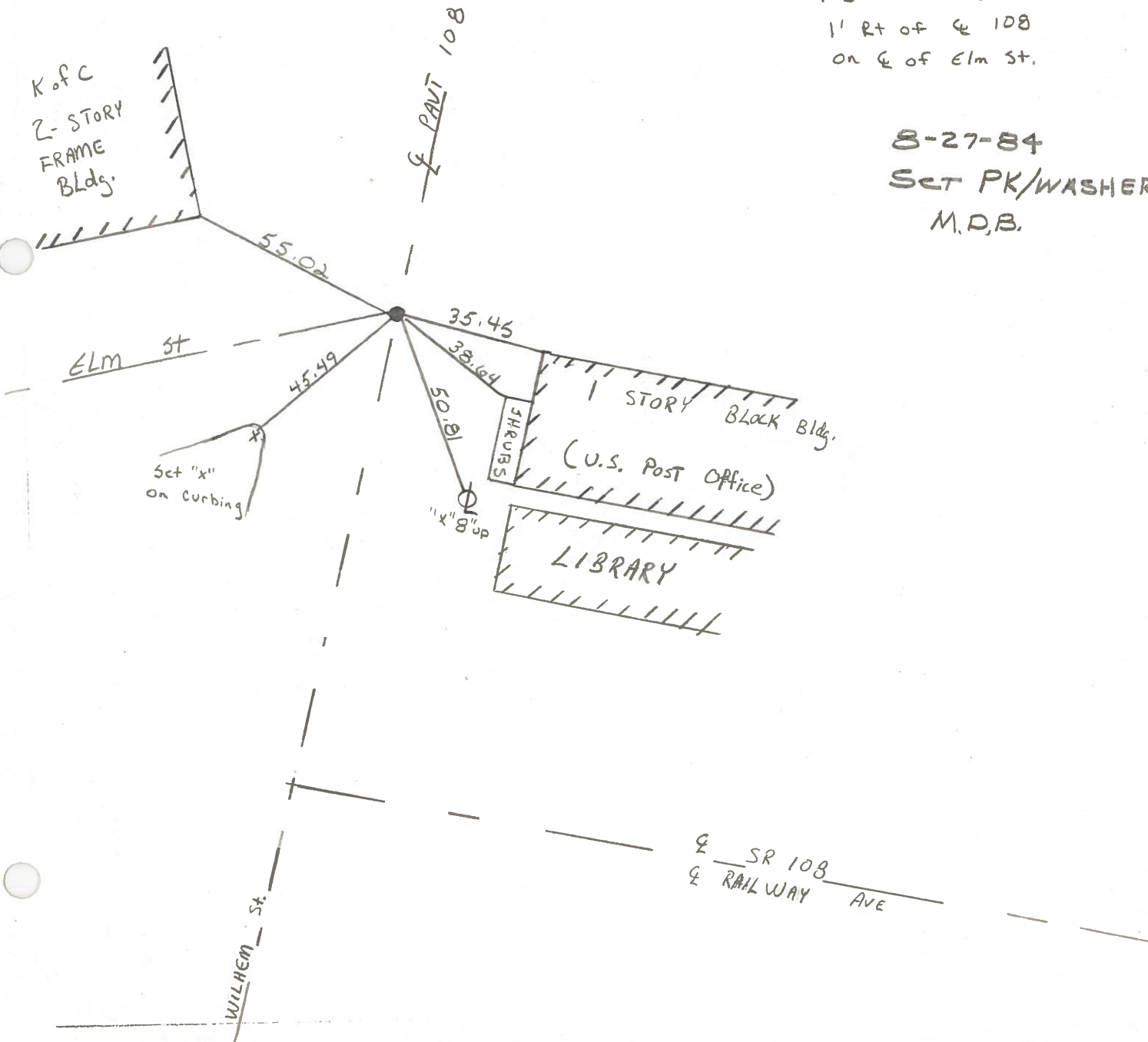


PT. 11-A

#11A

56M 316+73
FD PK @ surface
1' Rt of & 108
on & of Elm St.

8-27-84
SET PK/WASHER
M.D.B.



PERSONNEL	TITLE	PERSONNEL	TITLE	COUNTY	DATE
Dmsic				HENRY	July 15, 1974
Nawer				S. R. 108	WEATHER
Granata				SEC. Pleasant Twp.	TEMP.

DESCRIPTION	LEFT	CENTER LINE	RIGHT	JOB NO.
-------------	------	-------------	-------	---------

