

O.D.O.T. DISTRICT 2 SURVEY OFFICE (USE ONLY)

PERSONNEL _____ REFERENCE NO. 12 SHEET 11 OF 16

NOTES HELDMAN DATE 4/26/17 ROUTE SR 108

H.C. LEU WEATHER PTLY CLOUDY COUNTY HENRY

R.C. HELDMAN TEMP. 65° TOWNSHIP PLEASANT

SECTION 1

T 3 N R 6 E

TYPE MONUMENT MAG/WASHER

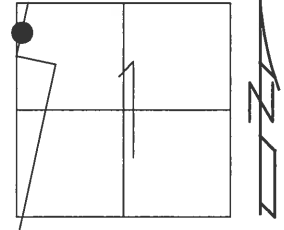
ON SURFACE - BELOW ON

LEFT - ☉ PAV'T - RIGHT 0.5'

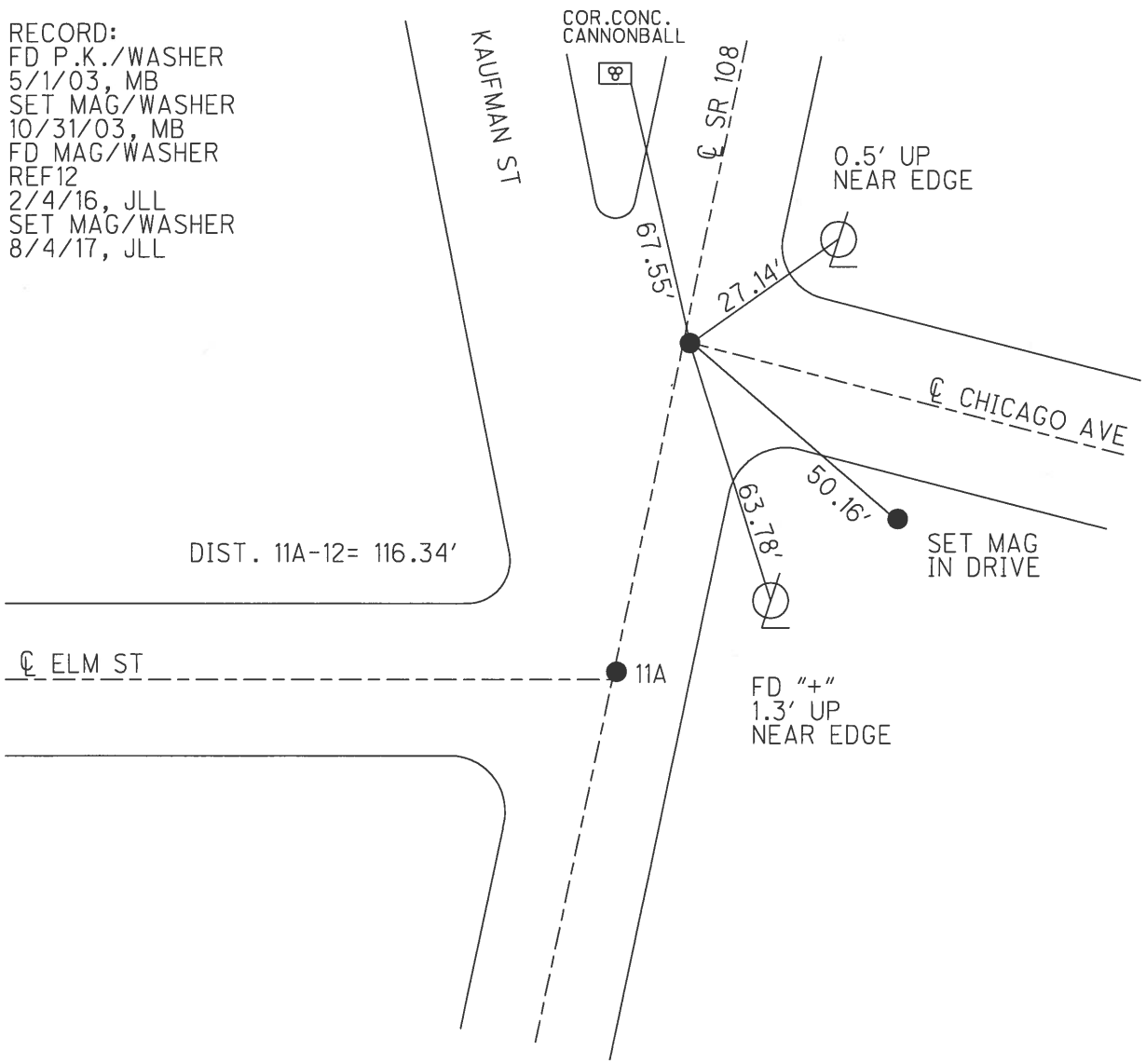
- TO - EDGE PAVEMENT

S.L.M. 318+19.8

Grid: Northing: 581395.223 Easting: 1519642.498



RECORD:
 FD P.K./WASHER
 5/1/03, MB
 SET MAG/WASHER
 10/31/03, MB
 FD MAG/WASHER
 REF12
 2/4/16, JLL
 SET MAG/WASHER
 8/4/17, JLL



O.D.O.T. DISTRICT 2 SURVEY OFFICE

PERSONNEL

REFERENCE NO. 12

SHEET 18 OF 20

NOTES BRUMBAUGH

H.C. BARNHISEL

R.C. RYALL

DRAWN: CANTERBURY

DATE 5-01-03

WEATHER SUNNY

TEMP. + 70°

ROUTE S.R. # 108

COUNTY HENRY

TOWNSHIP PLEASANT

SECTION 1

T 3 N R 6 E

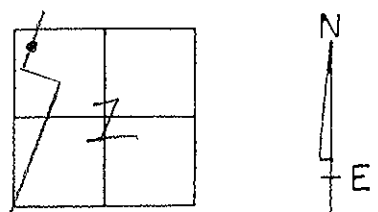
TYPE MONUMENT P.K. / WASHER

ON SURFACE - ~~BELOW~~ SURFACE

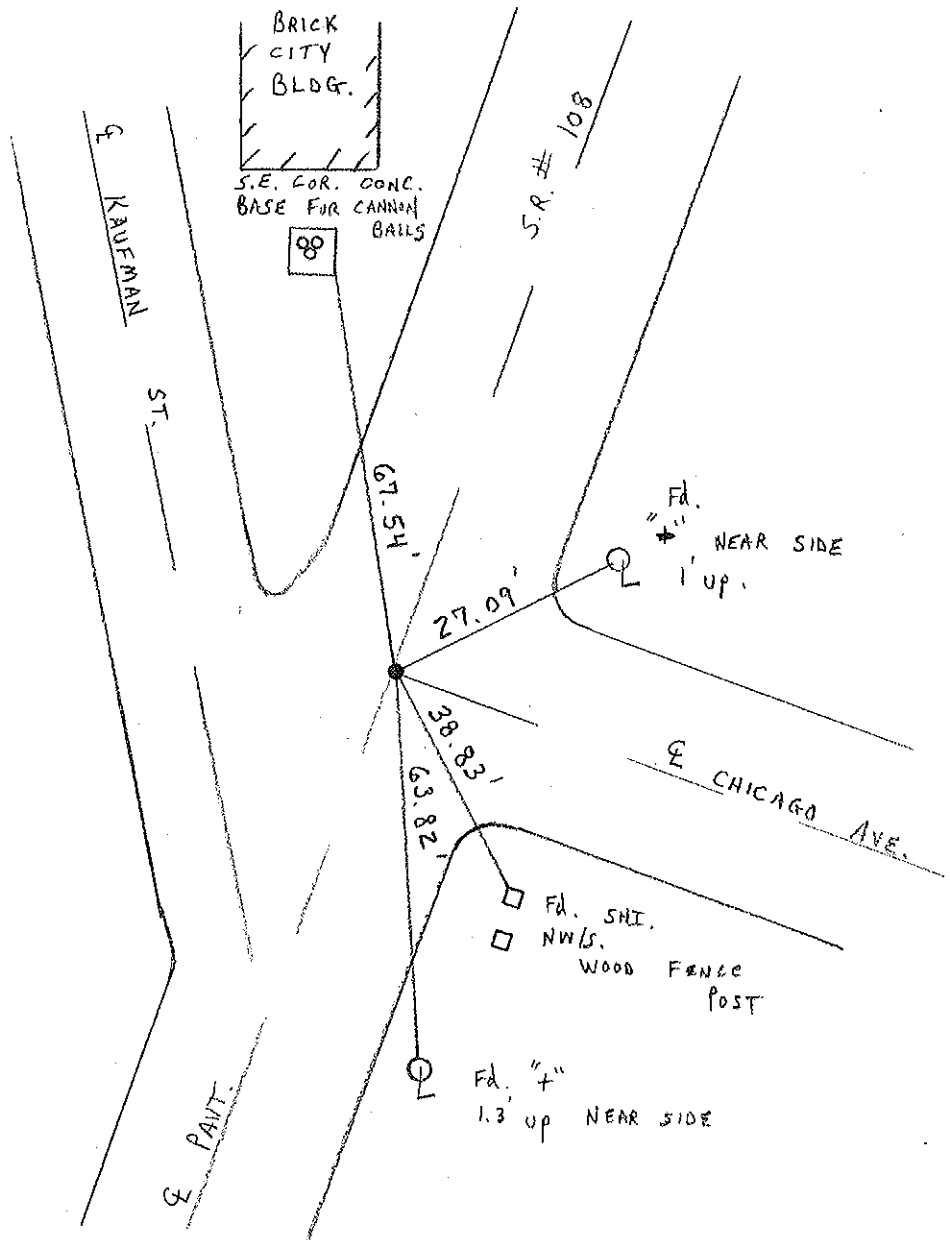
~~LEFT - & PAV'T.~~ - RIGHT 0.9' RT &

TO EDGE PAVEMENT

S.L.M. 317 + 11



RESET MAG/WASHER
10-31-03
M.C.



O.D.O.T. DISTRICT 2 SURVEY OFFICE

PERSONNEL

REFERENCE NO. 12

SHEET 17 OF 54

NOTES LOCHAKE

H.C. CURTIS

R.C. ROMETO

FALKOWSKI

DATE 8-14-92

WEATHER Cloudy

TEMP. +70

ROUTE S.R. 108

COUNTY Henry

TOWNSHIP Pleasant

SECTION 1

T 3 N R 6 E

RESET

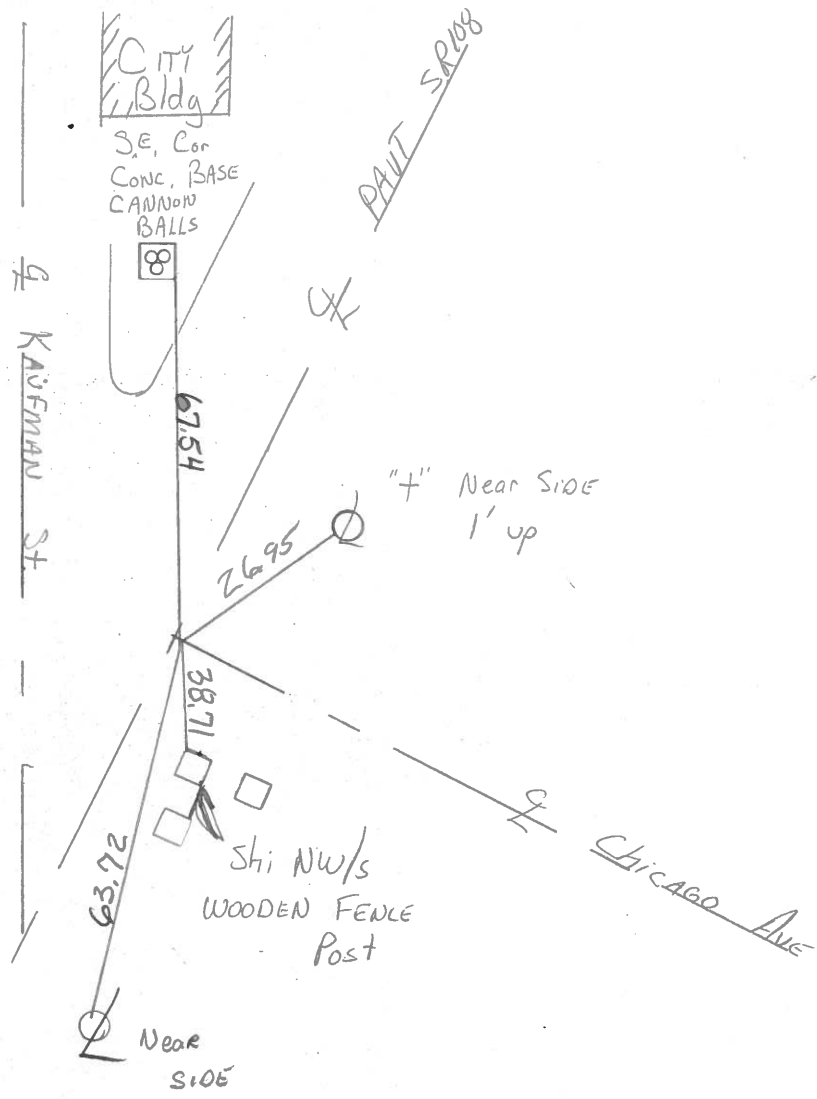
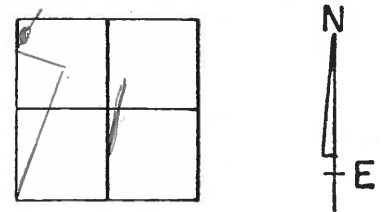
TYPE MONUMENT P.K. / WASHER 9-29-92

ON SURFACE - ~~BELOW~~ Yes

~~LEFT -~~ PAV'T. - RIGHT 0.9 Rt E S.R. 108

TO EDGE PAVEMENT

S.L.M. 317+11



County HENRY S.R. 108

Township PLEASANT

Section 1

T3N, R6E

Personnel Hoffman

Loehrke H.C.

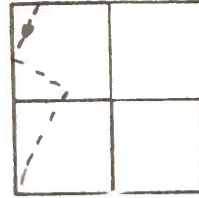
Householder R.C.

Barnhisel Notes

Date 6-27-84

Weather PARTLY CLOUDY

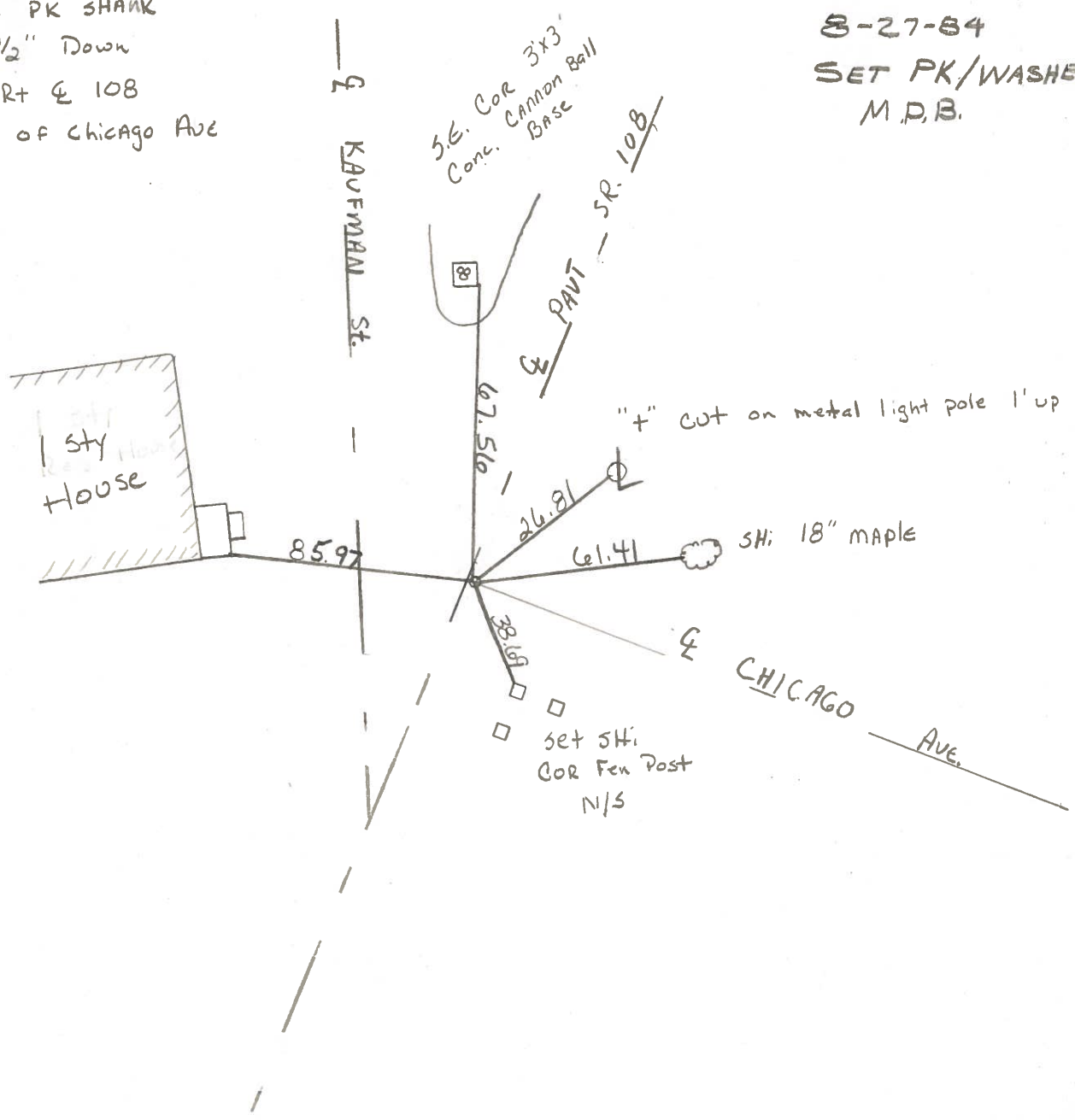
Temp. +77°



12

SLM 317+90
FD PK SHANK
1/2" Down
1' Rt & 108
& of Chicago Ave

8-27-84
SET PK/WASHER
M.P.B.



PERSONNEL	TITLE	PERSONNEL	TITLE
Toussie			
Nausser			
Vanyo			
Granata			

COUNTY HENRY DATE July 16, 1974

S. R. 108 WEATHER _____

SEC. PLEASANT TWP. TEMP. _____

1958 Plans Sta.

DESCRIPTION	LEFT	CENTER LINE	RIGHT	JOB NO.
-------------	------	-------------	-------	---------

