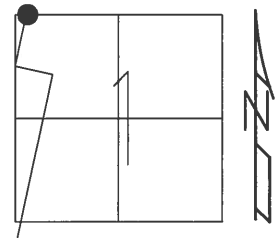


O.D.O.T. DISTRICT 2 SURVEY OFFICE (USE ONLY)

PERSONNEL _____ REFERENCE NO. 14 SHEET 13 OF 16
 NOTES HELDMAN DATE 4/26/17 ROUTE SR 108
 H.C. LEU WEATHER PTLY CLOUDY COUNTY HENRY
 R.C. HELDMAN TEMP. 65° TOWNSHIP FLATROCK
 _____ SECTION 1
 _____ T 3 N R 6 E

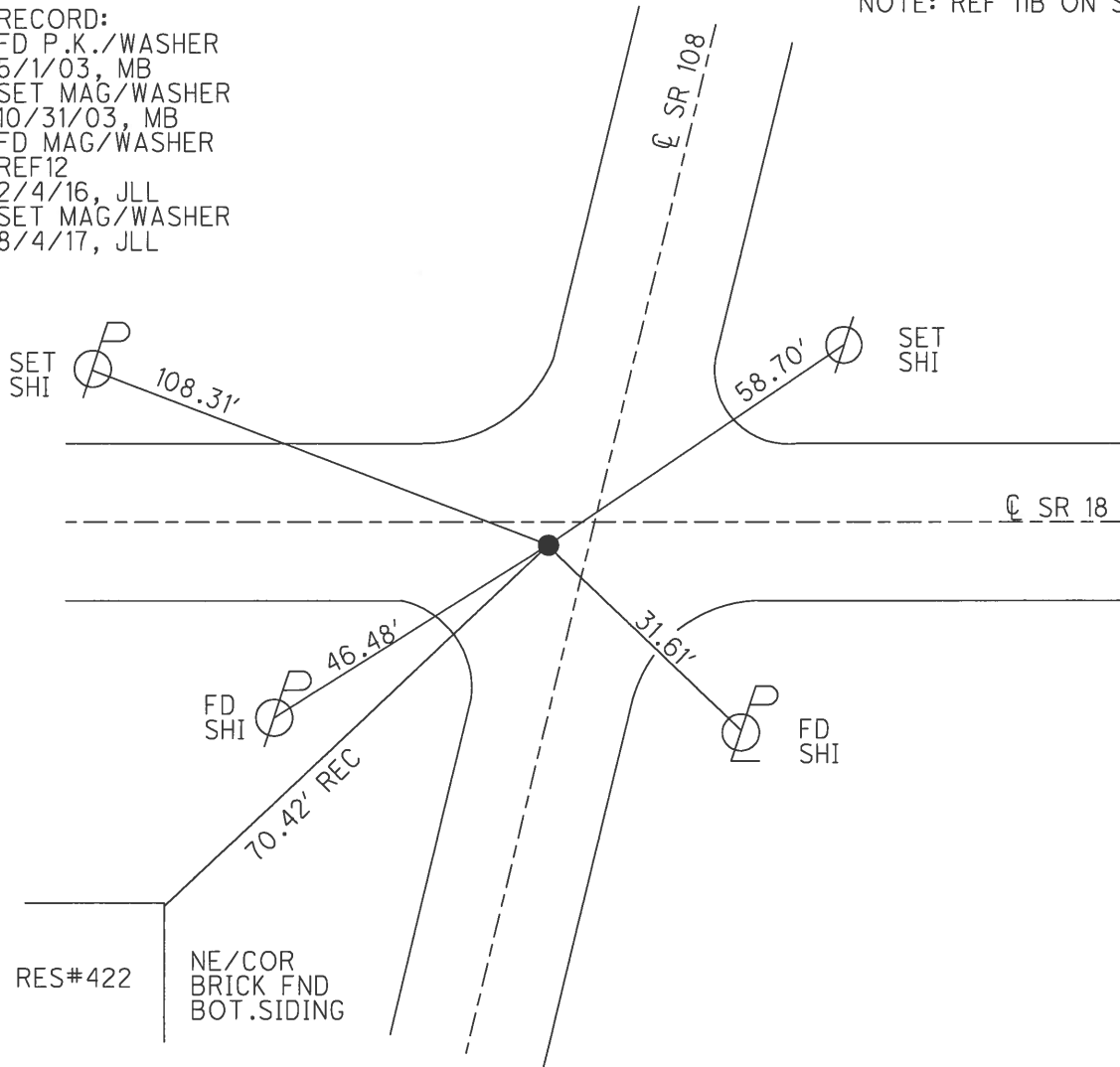
TYPE MONUMENT MAG NAIL
 ON SURFACE - ~~BELOW~~ ON
 LEFT - ☉ PAV'T - ~~RIGHT~~ 4.4', 2.2' S OF ☉ W
TO EDGE PAVEMENT
 S.L.M. 328+30.89

Grid: Northing: 582369.208 Easting: 1519904.016



RECORD:
 FD P.K./WASHER
 5/1/03, MB
 SET MAG/WASHER
 10/31/03, MB
 FD MAG/WASHER
 REF12
 2/4/16, JLL
 SET MAG/WASHER
 8/4/17, JLL

NOTE: REF 11B ON SR 18



O.D.O.T. DISTRICT 2 SURVEY OFFICE (USE ONLY)

PERSONNEL

REFERENCE NO. 11B

SHEET 23 OF 29

NOTES MOSER

DATE 09-10-09

ROUTE SR 18

H.C. GOLDBERG

WEATHER SUNNY

COUNTY HENRY

R.C. PIETKOWSKI

TEMP. +75°

TOWNSHIP PLEASANT

SECTION 1

T 3 N R 6 E

TYPE MONUMENT PK/WASHER

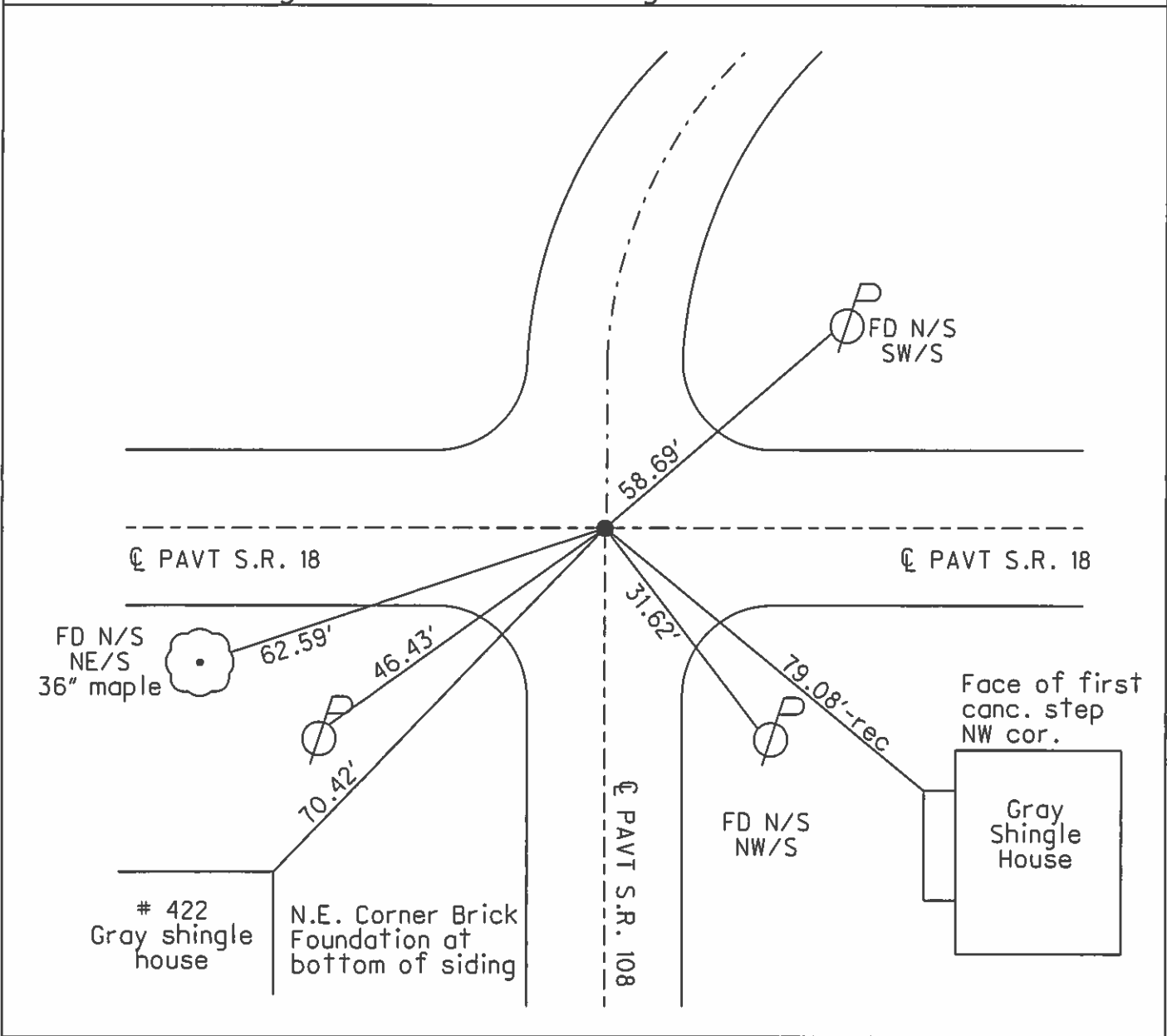
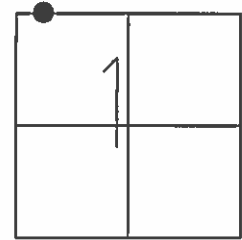
~~ON SURFACE~~ - BELOW 2" BELOW

LEFT - ☉ PAV'T - RIGHT _____

_____ TO _____ EDGE PAVEMENT

S.L.M. (SV122)

Grid: Northing: 582369.126 Easting: 1519903.973



O.D.O.T. DISTRICT 2 SURVEY OFFICE

PERSONNEL

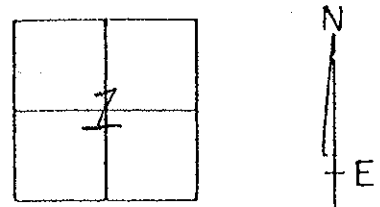
REFERENCE NO. 14 ON S.R. #108
11 ON S.R. #18 SHEET 20 OF 20

NOTES BRUMBAUGH
 H.C. BARNHISEL
 R.C. RYALL
 DRAWN: CANTERBURY

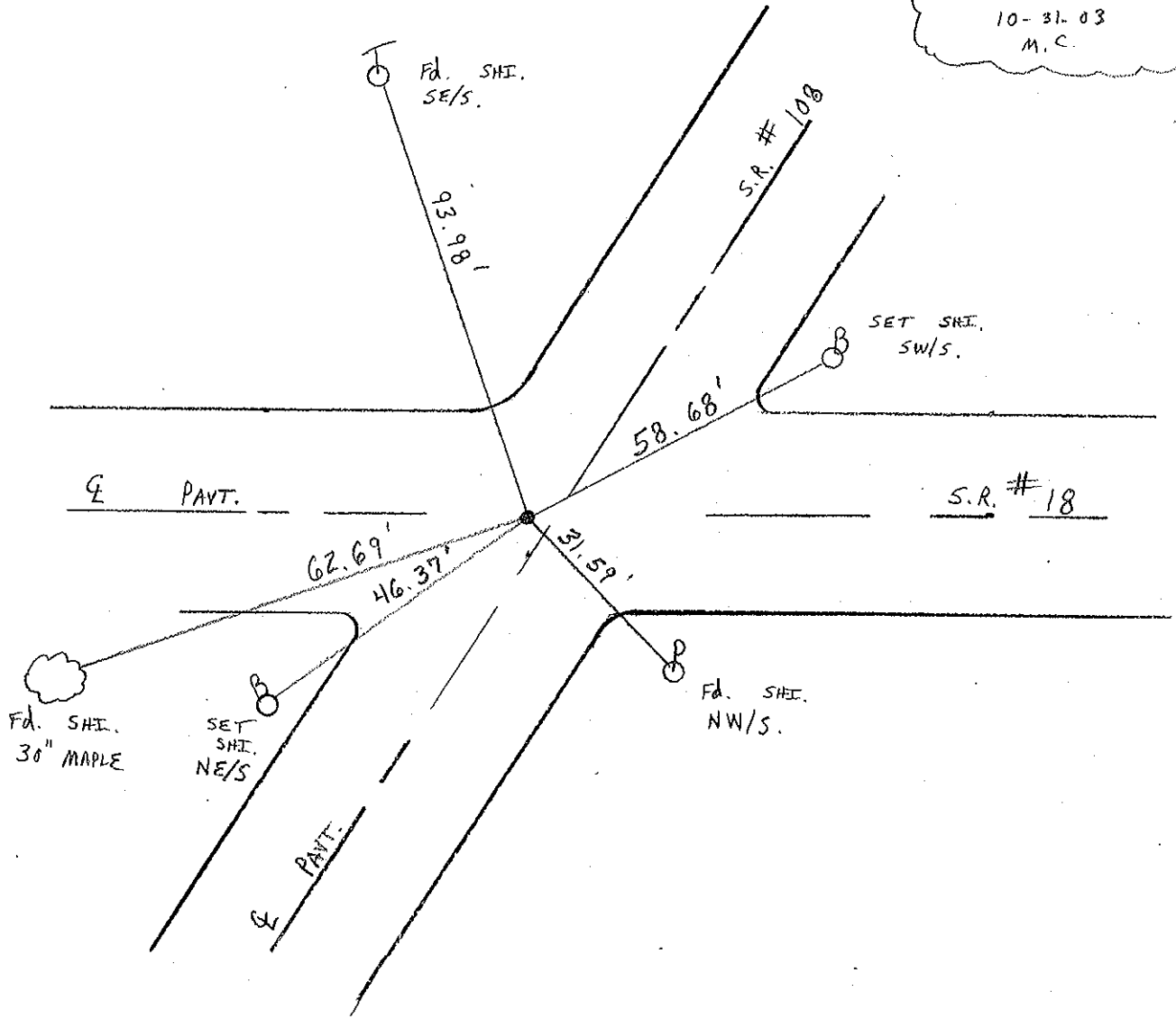
DATE 5-01-03
 WEATHER SUNNY
 TEMP. +68°

ROUTE S.R. #108
 COUNTY HENRY
 TOWNSHIP PLEASANT
 SECTION 1
T.3 N. R. 6 E

TYPE MONUMENT P.K. / WASHER
 ON SURFACE - BELOW 1" BELOW
 LEFT- & PAV'T. - RIGHT 3.3' LT & 108
TO EDGE PAVEMENT
 S.L.M. 327 + 26



RESET MAG/WASHER
 10-31-03
 M.C.



HOLGATE

O.D.O.T. DISTRICT 2 SURVEY OFFICE

PERSONNEL

REFERENCE NO. 14 ON SR 108
11 ON SR 18

SHEET 19 OF 54

NOTES LOHRKE

H.C. CURTIS

R.C. ROMETO
FANKOWSKI

DATE 8-14-92

WEATHER CLOUDY

TEMP. 768

ROUTE S.R. 108

COUNTY HENRY

TOWNSHIP PLEASANT

SECTION 1

T 3 N R 6 E

RESET 9-29-92

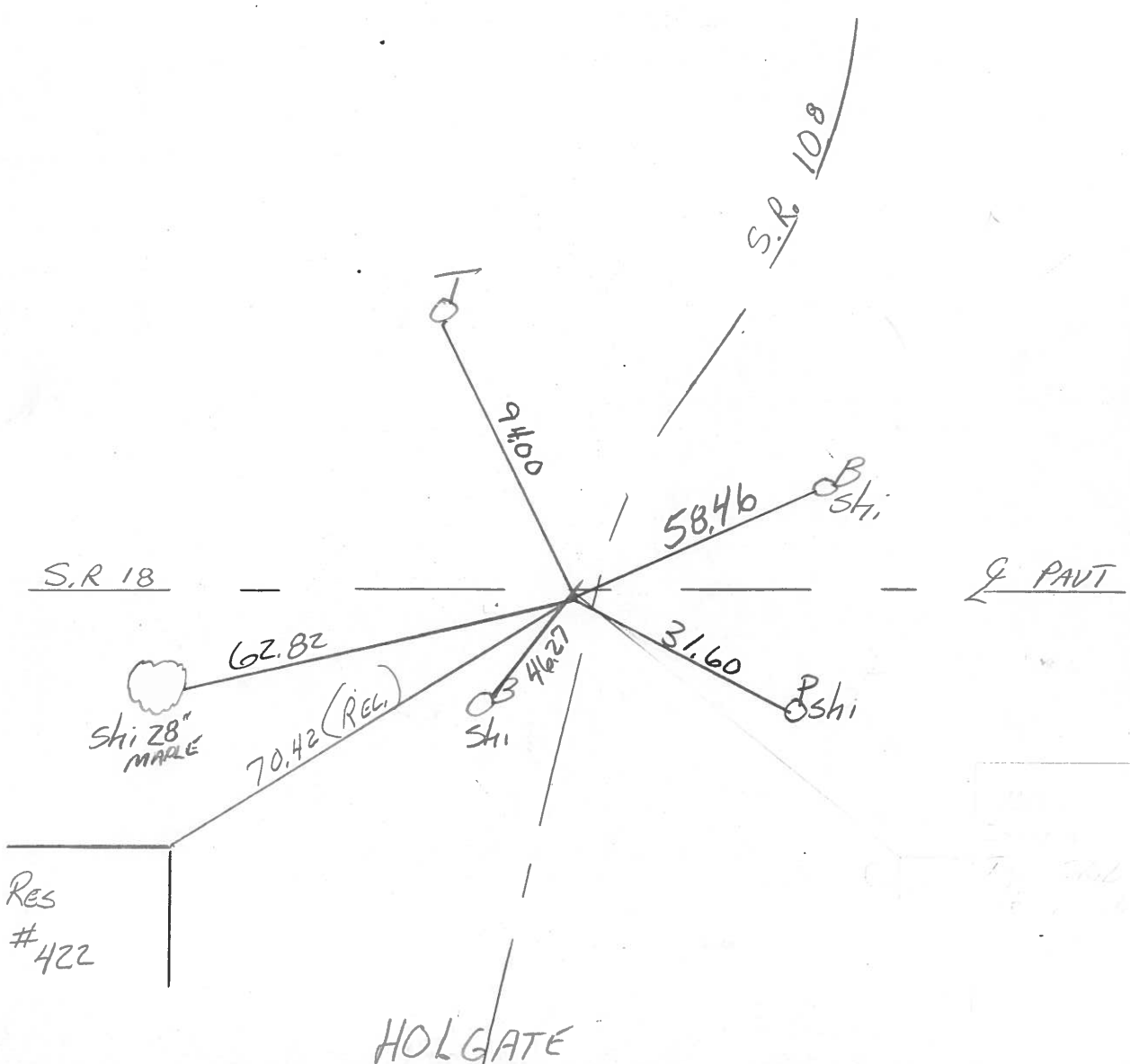
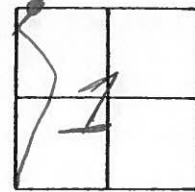
TYPE MONUMENT PK. WASHER

ON SURFACE - BELOW Yes

LEFT-☉ PAVT. - RIGHT 3.7 L + 108

TO EDGE PAVEMENT

S.L.M. 327 + 26



County HENRY S.R. 108

Township PLEASANT

Section 1

T3N, R6E

Personnel Hoffman

Loehke HC.

Householder RC.

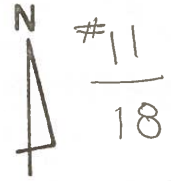
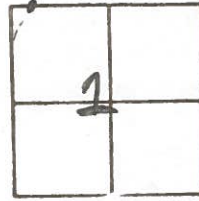
Barnhiser NOTES

14

Date 6-27-84

Weather PARTLY Cloudy

Temp. +77°



SLM 327+99

FD PK @ SURFACE

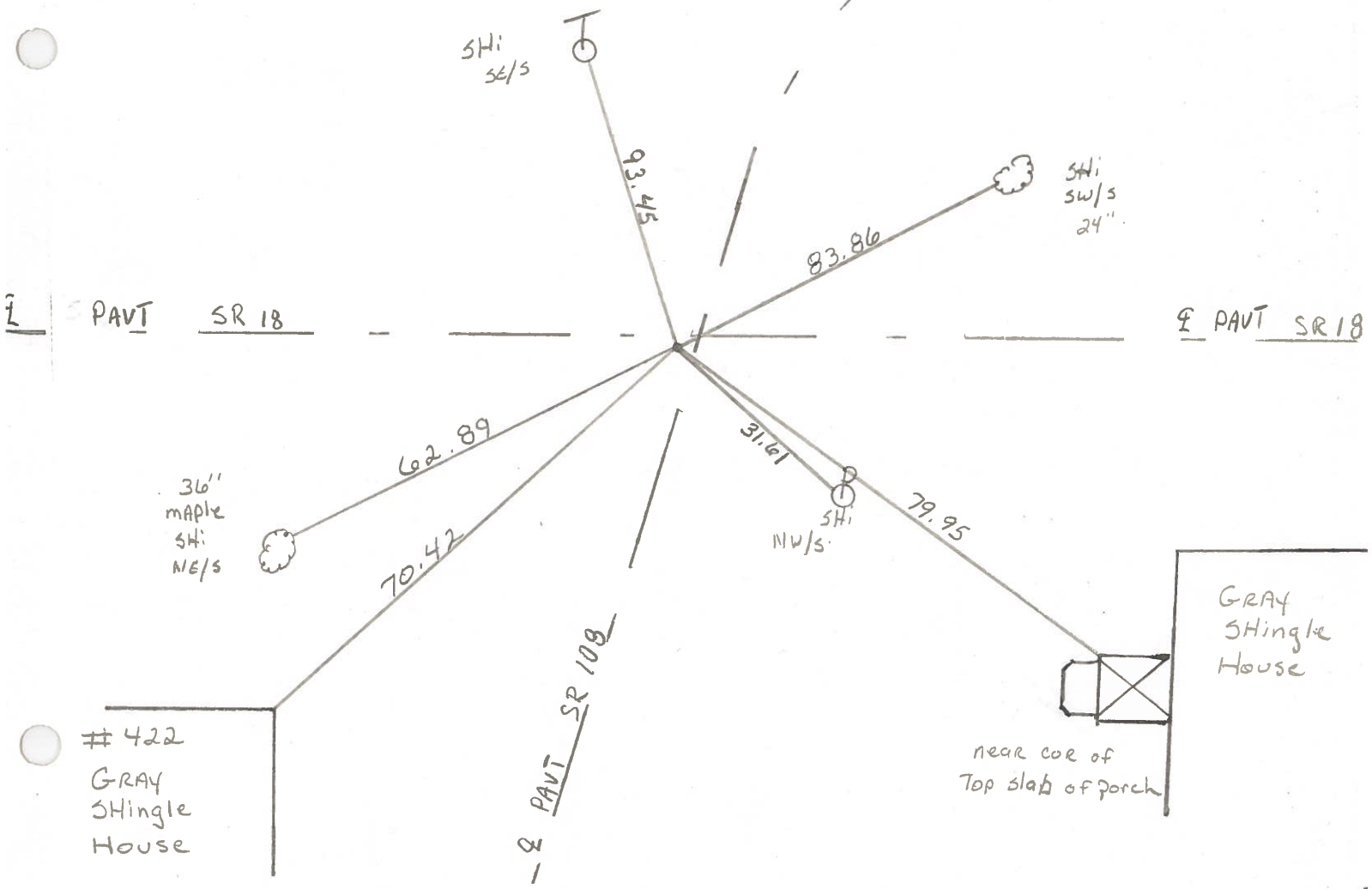
3' Lt of Q 108

3' S of Q 18

E. PAVT SR18

8-27-84

SET PK/WASHER
M.P.B



PERSONNEL	TITLE	PERSONNEL	TITLE
Tomsic			
Nausev			
Vanyo			
Granata			

COUNTY HENRY DATE July 16, 1974

S. R. 108 WEATHER _____

SEC. PLEASANT TWP. TEMP. _____

DESCRIPTION 1958 Plans Sta. JOB NO. _____

