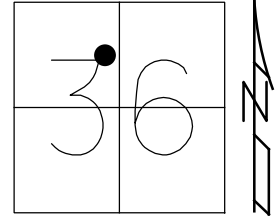


O.D.O.T. DISTRICT 2 SURVEY OFFICE (USE ONLY)

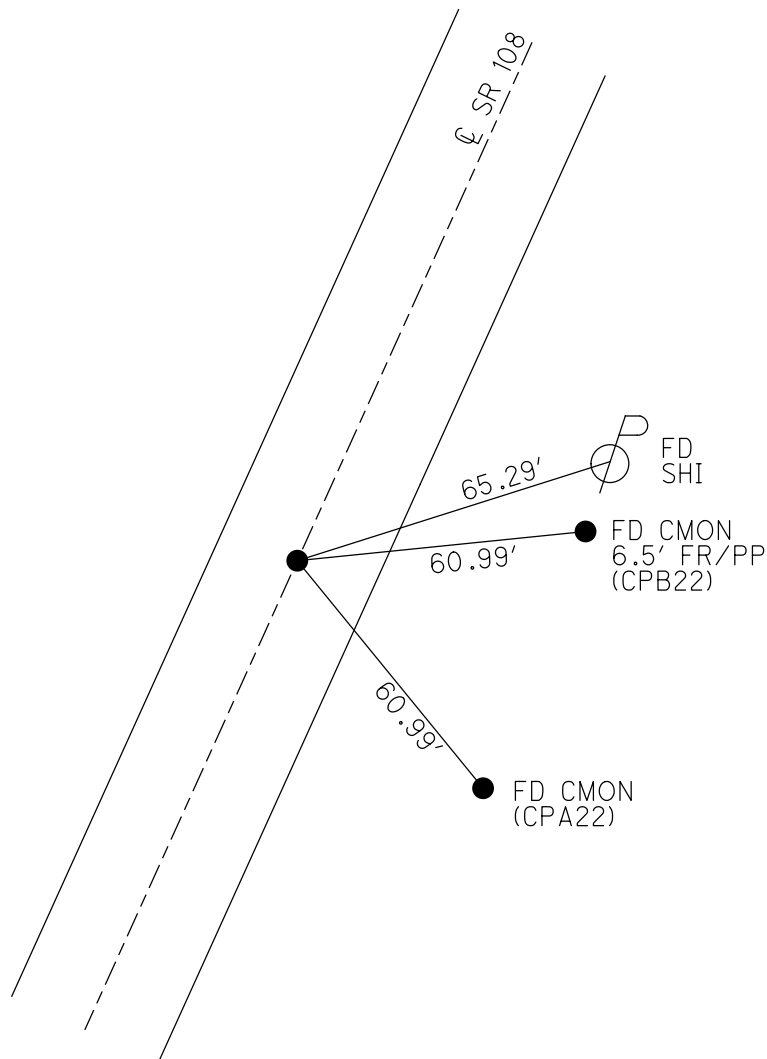
PERSONNEL \_\_\_\_\_ REFERENCE NO. 22 SHEET 7 OF 48  
 NOTES RHOADES DATE 10-20-2020 ROUTE SR 108  
 H.C. AUBLE WEATHER CLOUDY COUNTY HENRY  
 R.C. O'DONNELL TEMP. 45° TOWNSHIP FLATROCK  
 DWG BY MILLER PID 94319 SECTION 36  
 T 4 N R 6 E

TYPE MONUMENT MAG/WASHER  
 ON SURFACE - ~~BELOW~~ ON  
 OFFSET Q PAVEMENT ON LT : RT  
13.2 TO RT EDGE PAVEMENT  
 STATION: 369+05.74

HORZ.DATUM: NAD83 (2011) GEOID: 2012A  
 GRID: NORTHING: 585828.315 EASTING: 1521919.546



RECORD: P.O.T.  
 STA 369+00  
 FD P.K./WASHER  
 8/18/92, MB  
 SET P.K./WASHER  
 9-17-92, MB  
 DNF  
 11-5-18, JLL  
 SET MAG/WASHER  
 NEWREF22  
 10-20-20, DSA



# O.D.O.T. DISTRICT 2 SURVEY OFFICE

PERSONNEL

REFERENCE NO. 22

SHEET 27 OF 54

NOTES VAN DUSEN

H.C. KUSZ

R.C. BARNHISEL

DATE 8-18-92

WEATHER CLOUDY

TEMP. +25° F

ROUTE SR 108

COUNTY HENRY

TOWNSHIP FLATROCK

SECTION 36

T4 N R 6 E

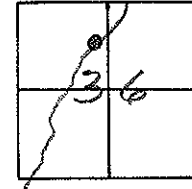
TYPE MONUMENT PK & WASHER

ON SURFACE - BELOW YES

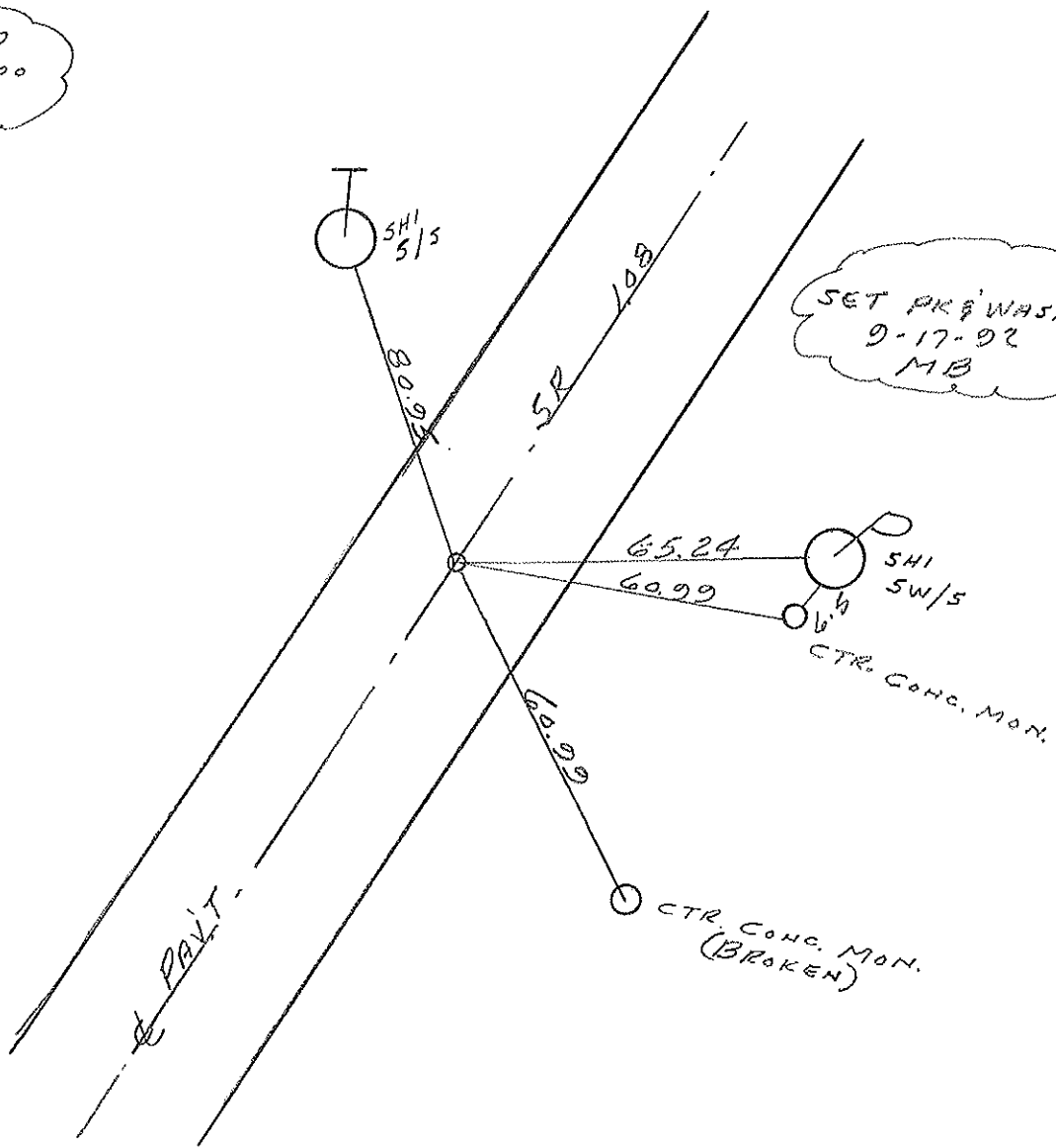
LEFT - & PAV'T. - RIGHT YES

13' TO RT. EDGE PAVEMENT

S.L.M. 367+97



RECORDED  
STA. 369+00  
P.O.T.



County HENRY S.R. 108

Township Flatrock

Section 36

T4N, R6E

Personnel Hoffman

Loehrke HC

Householder RL

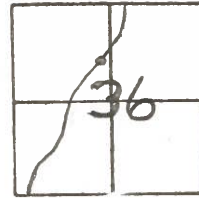
Barnhiser Notes

# 22

Date 6-27-84

Weather Partly Cloudy

Temp. +77°



SLM 368+77

FD PK @ Surface

on E of SR 108

12.1 Lt EP

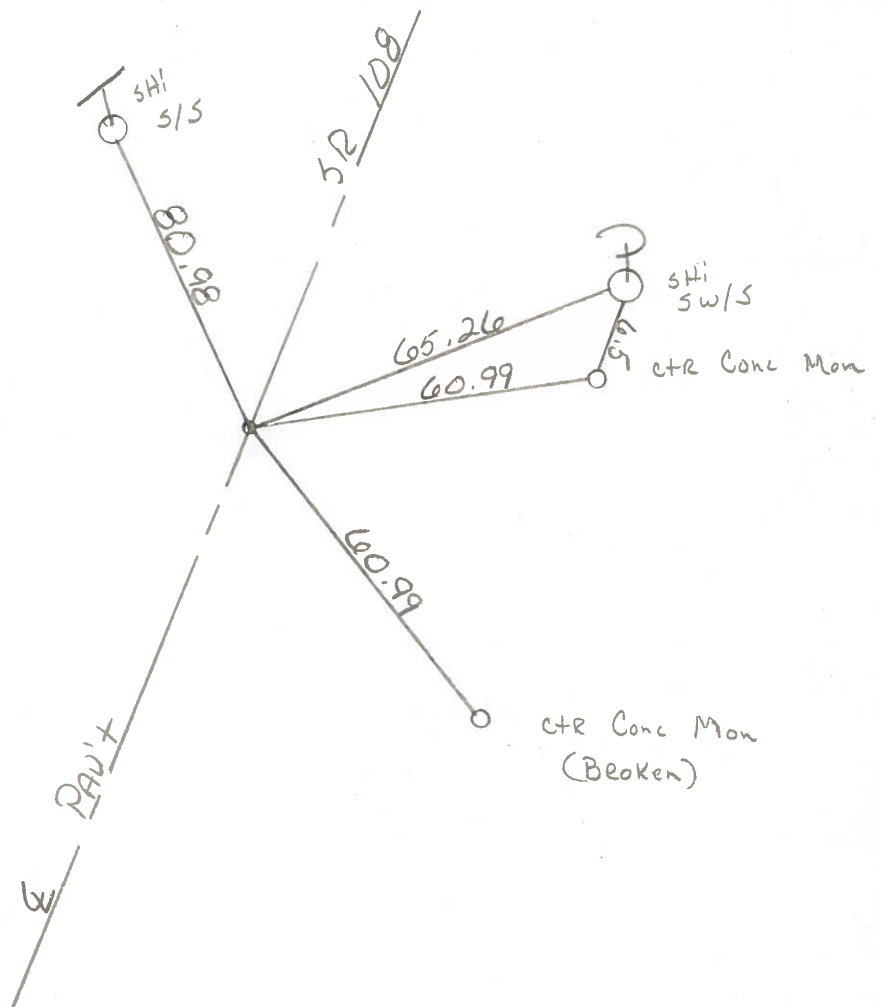
11.5 Rt EP

8-27-84

SET PK/WASHER

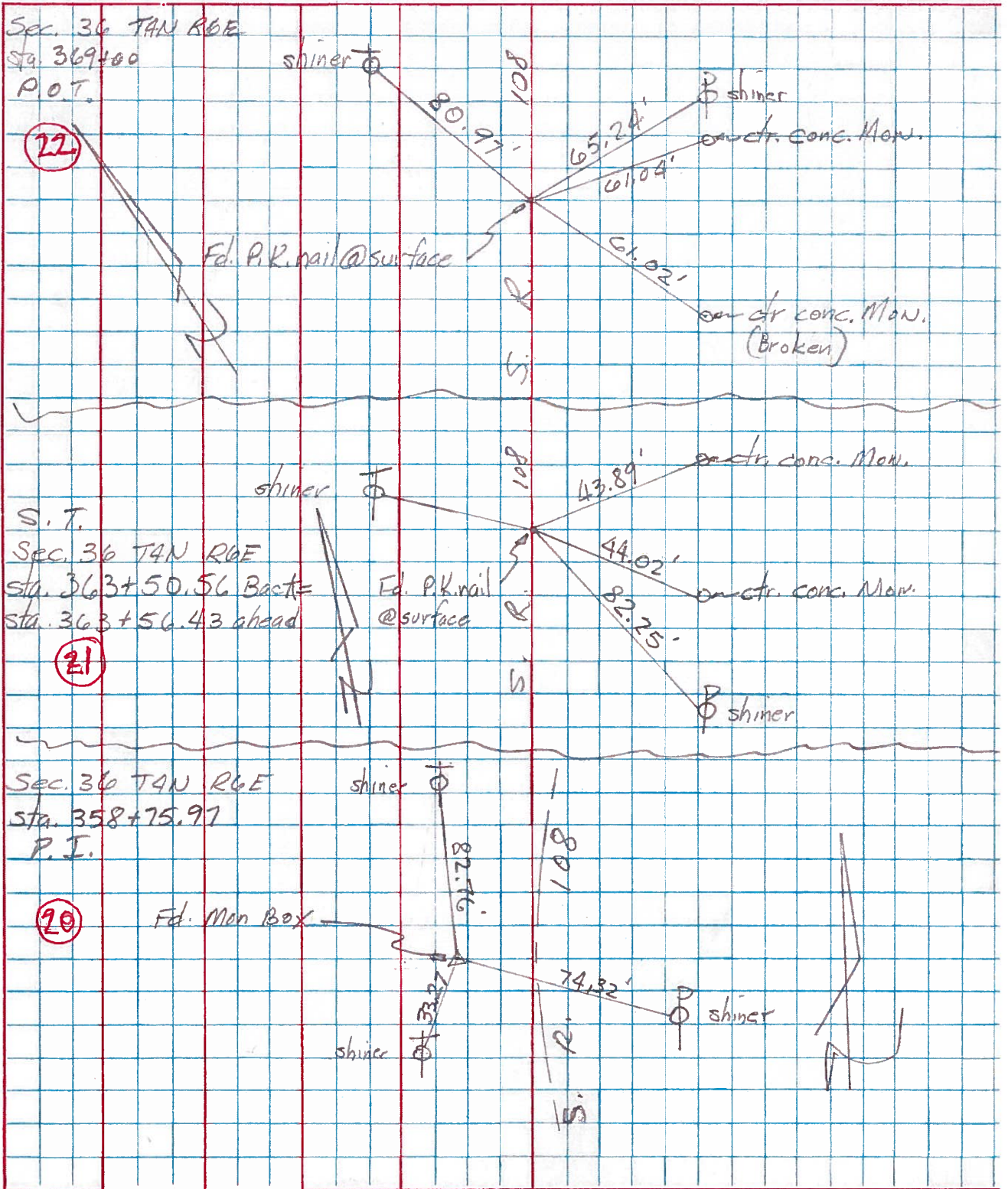
M.P.B.

Recorded  
Sta 369+00  
P.O.T.



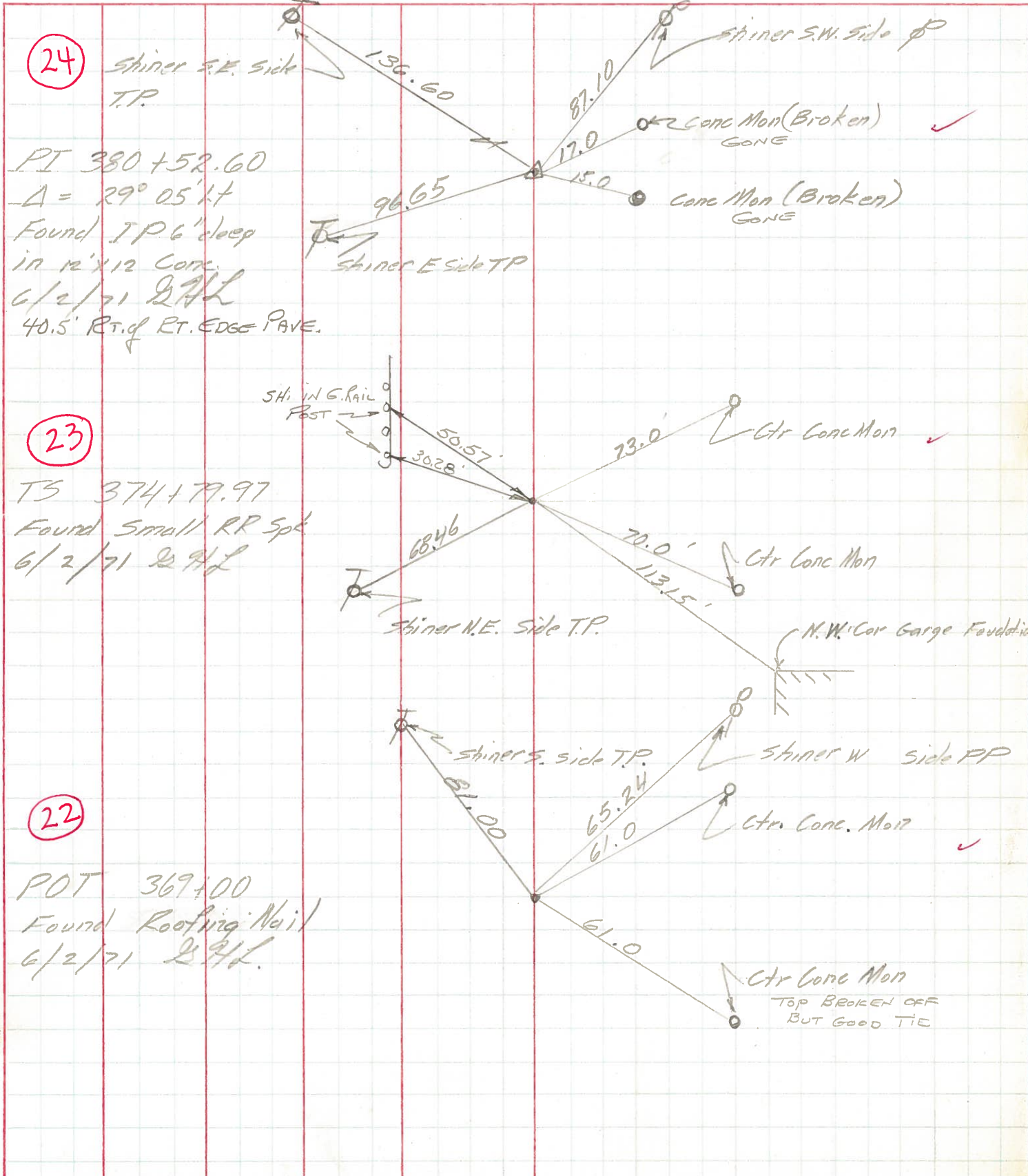
PERSONNEL	TITLE	PERSONNEL	TITLE	COUNTY	DATE	WEATHER	TEMP.
Tomic				HENRY	July 22, 1974		
Neuser				108			
Vanyl				Flatrock TWP			
Granata							

DESCRIPTION	LEFT	CENTER LINE	RIGHT	JOB NO.
-------------	------	-------------	-------	---------



PERSONNEL	TITLE	PERSONNEL	TITLE	COUNTY	DATE
Louys				Hen	6/2/71
Erikson	Recorder			S. R. #108	WEATHER Cloudy Rain
Kav				SEC. Holgat to Co Rd L	TEMP. 70°
Shaw					

DESCRIPTION Ref R/W Plan 1958 Ties JOB NO. \_\_\_\_\_



OK 5-4-72

OK 5-4-72

OK 5-4-72