

O.D.O.T. DISTRICT 2 SURVEY OFFICE (USE ONLY)

PERSONNEL

REFERENCE NO. 25A

SHEET 11 OF 48

NOTES ELKHECHEN

DATE 11/5/18

ROUTE SR 108

H.C. LEU

WEATHER CLOUDY

COUNTY HENRY

R.C. MILLER

TEMP. 51°

TOWNSHIP FLATROCK

SECTION 36

DWG BY MILLER

PID 94319

T 4 N R 6 E

TYPE MONUMENT P.K./WASHER

~~ON SURFACE~~ - BELOW 1 3/4"

OFFSET Q PAVEMENT 2.0 LT : ~~RT~~

- TO - EDGE PAVEMENT

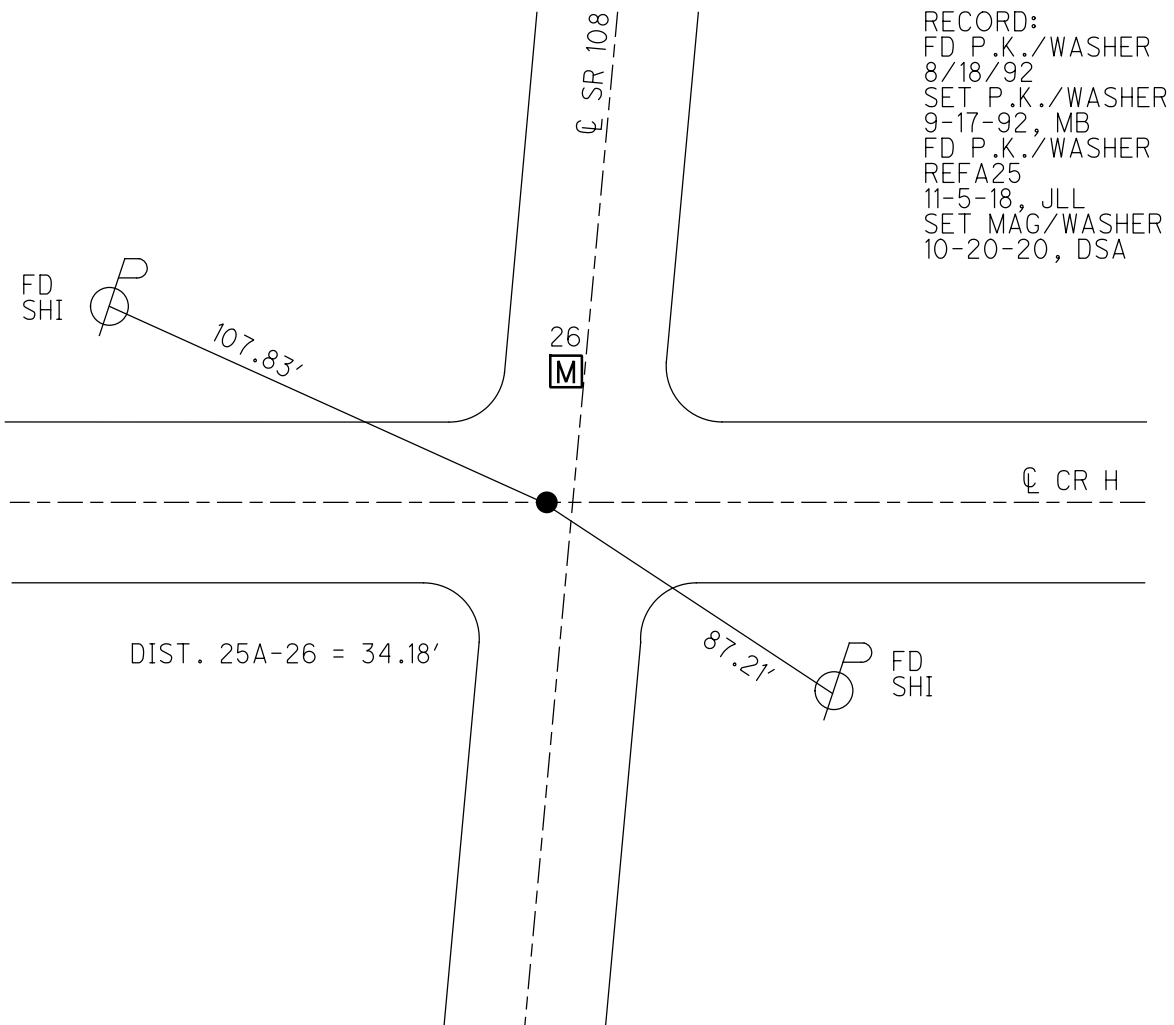
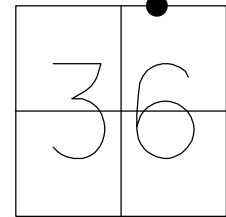
STATION: 389+16.75

HORIZ.DATUM: NAD83 (2011)

GEOID: 2012A

GRID: NORTHING: 587619.932

EASTING: 1522727.916



O.D.O.T. DISTRICT 2 SURVEY OFFICE

PERSONNEL

REFERENCE NO. 26

SHEET 31 OF 54

NOTES VANDUSEN

H.C. KUSZ

DATE 8-18-92

ROUTE SR 108

R.C. BARNHISEL

WEATHER CLOUDY

COUNTY HENRY

TEMP. +75° F

TOWNSHIP FLATROCK

SECTION 36

T A N R G E

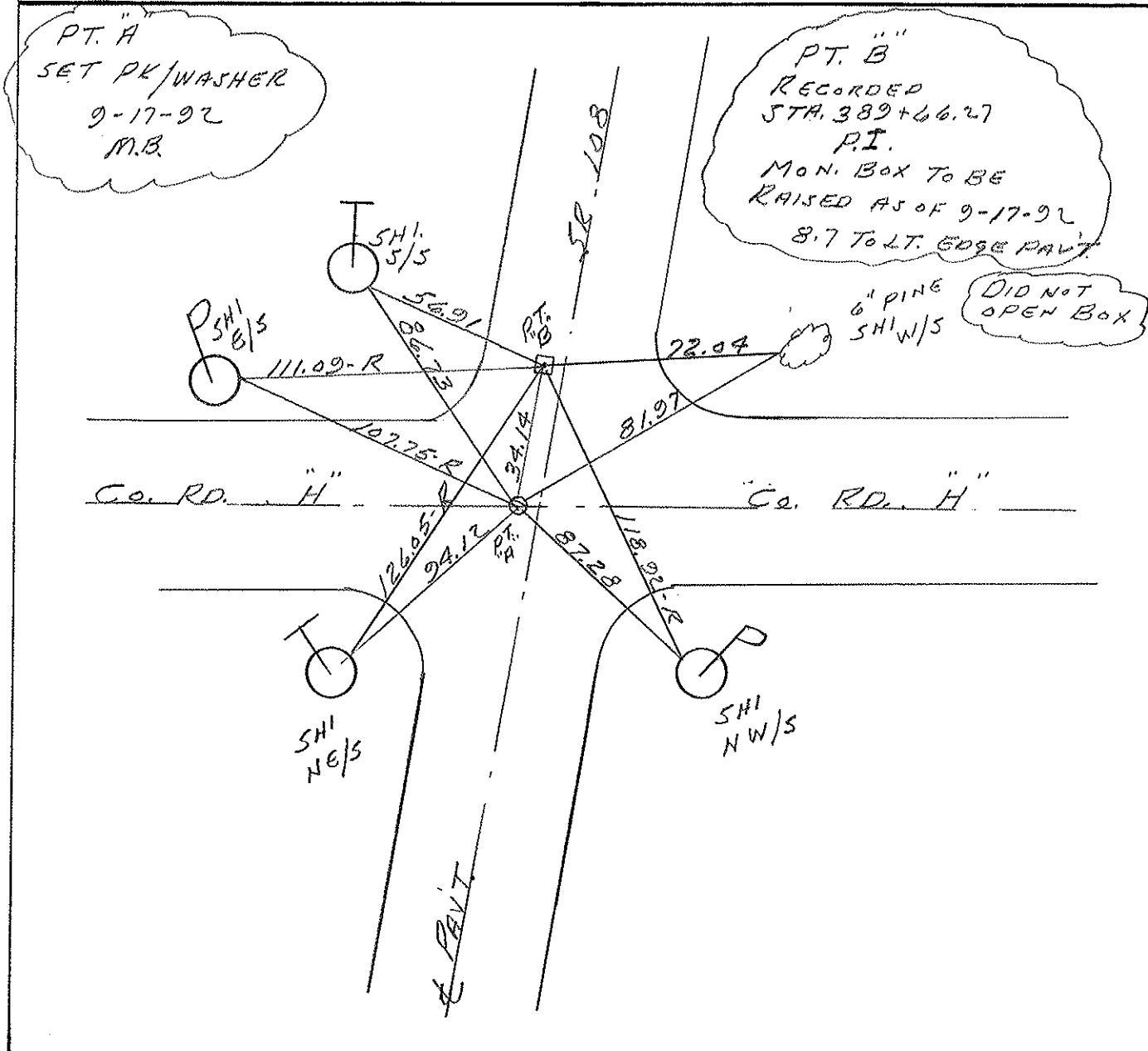
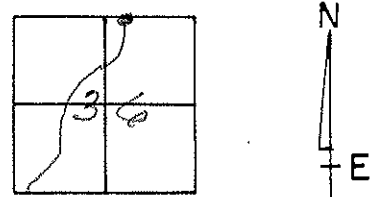
TYPE MONUMENT PT. A PK/WASHER PT. B MON. BOX

ON SURFACE - BELOW YES

LEFT - & PAV'T. - RIGHT 2.3 2.9

TO EDGE PAVEMENT

S.L.M. PT. A 388+07 PT. B 388+40



County HENRY S.R. 108

Township FLATROCK

Section 36

T4N, R6E

Personnel Hoffman

Loehrke HC

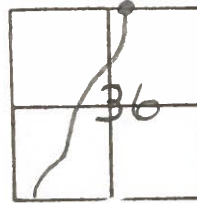
Householder RC

Barnhisel Notes

Date 6-28-84

Weather Sunny

Temp. +82°



8-27-84

Mon Box

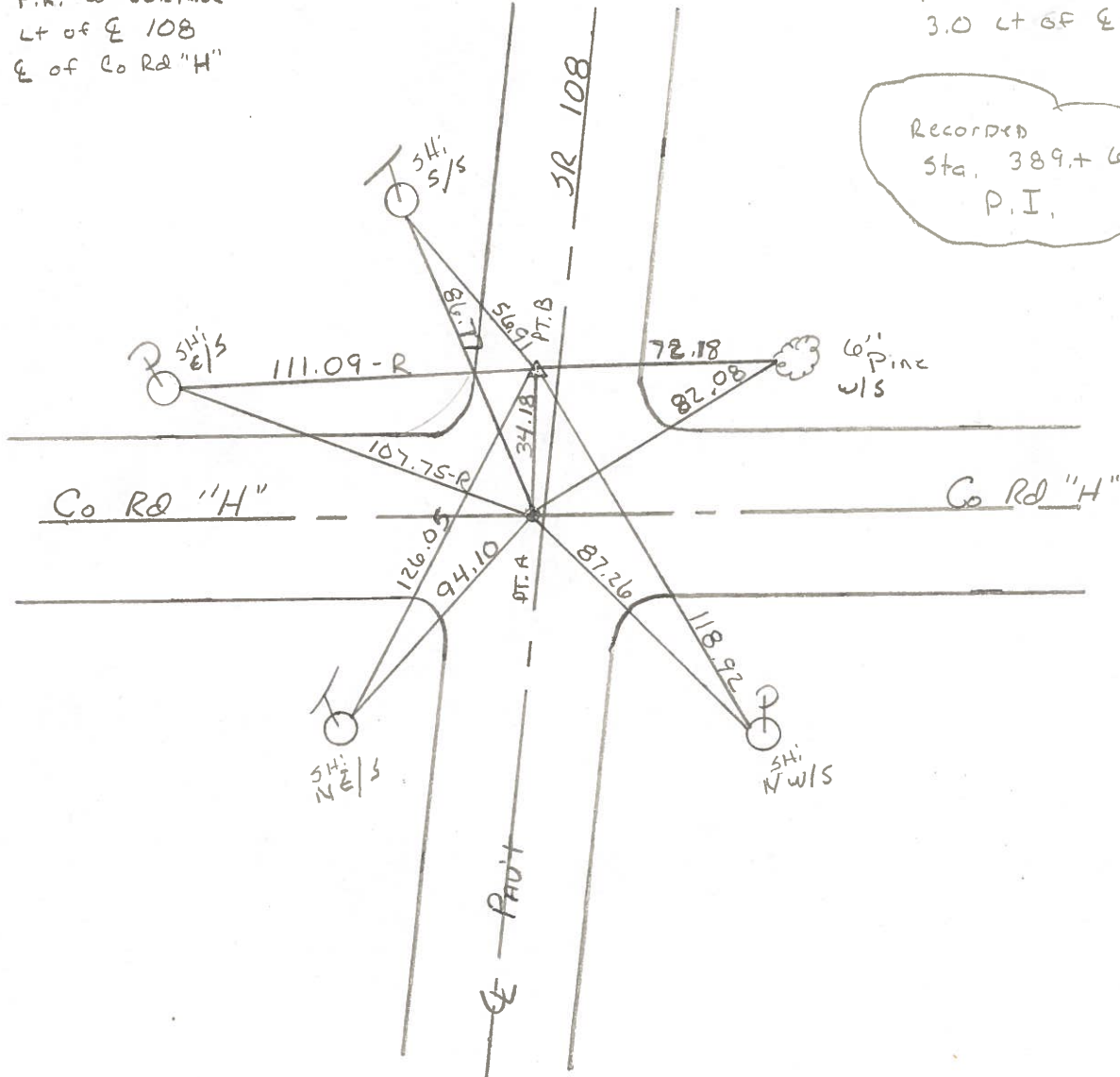
26

DID NOT RAISE
SET PK ABOVE Mon Box
M. D. B.

PT. "A"
56M 388+88
FD P.K. @ surface
1.7 Lt of E 108
On E of Co Rd "H"

PT. "B"
56M 389+22
FD PK @ surface
3.0 Lt of E 108

Recorded
Sta. 389.+ 66.27
P.I.



PERSONNEL TITLE PERSONNEL TITLE

Tomsic
Neuser
Vanyo
Granata

COUNTY HENRY DATE July 24, 1974

S. R. 108 WEATHER

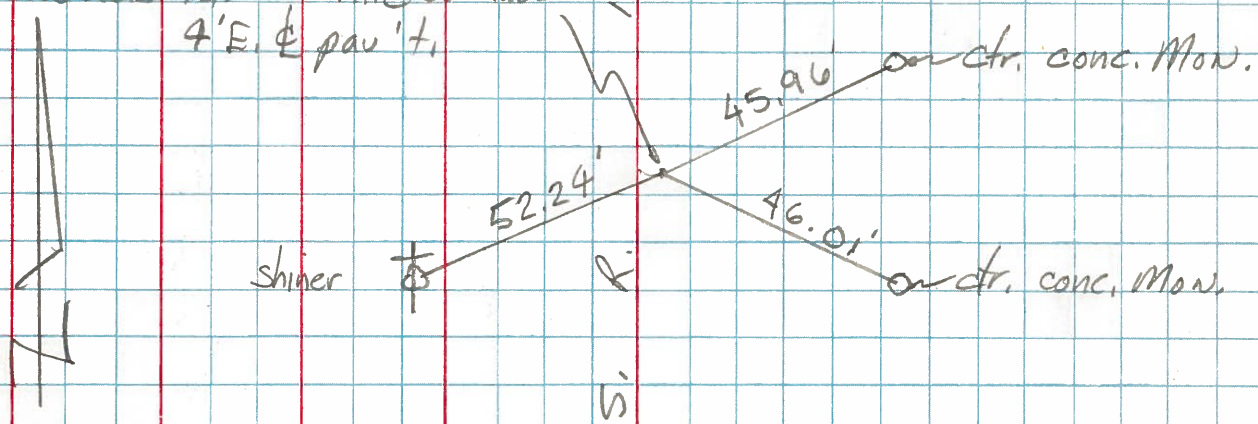
SEC. Flatrock Twp. TEMP.

DESCRIPTION LEFT CENTER LINE RIGHT JOB NO.

Sta. 402+84.49
P. I.

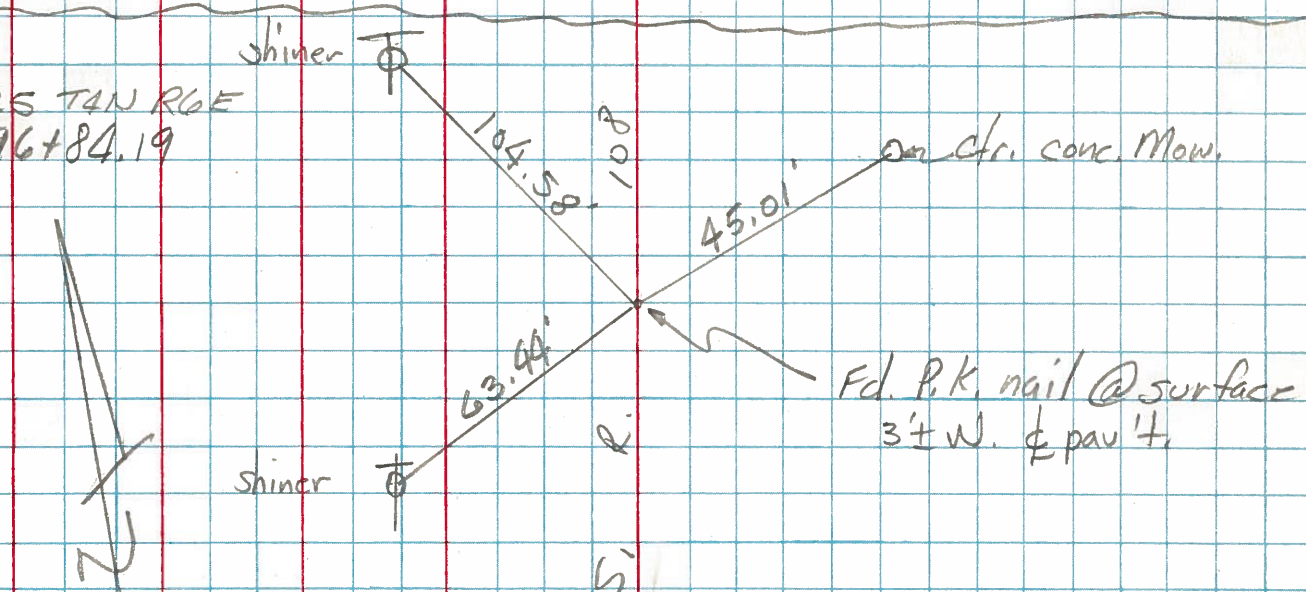
Sec. 25 T4N R6E Fd. P.K. nail @ surface
4'E. & pav't.

29



Sec. 25 T4N R6E
Sta. 396+84.19
P. I.

27



Sta. 389+66.27
P. I. Sta.

26

(Sec. 25)
(Sec. 36)

