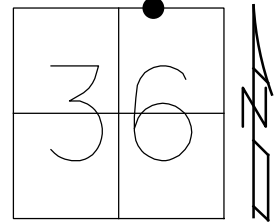


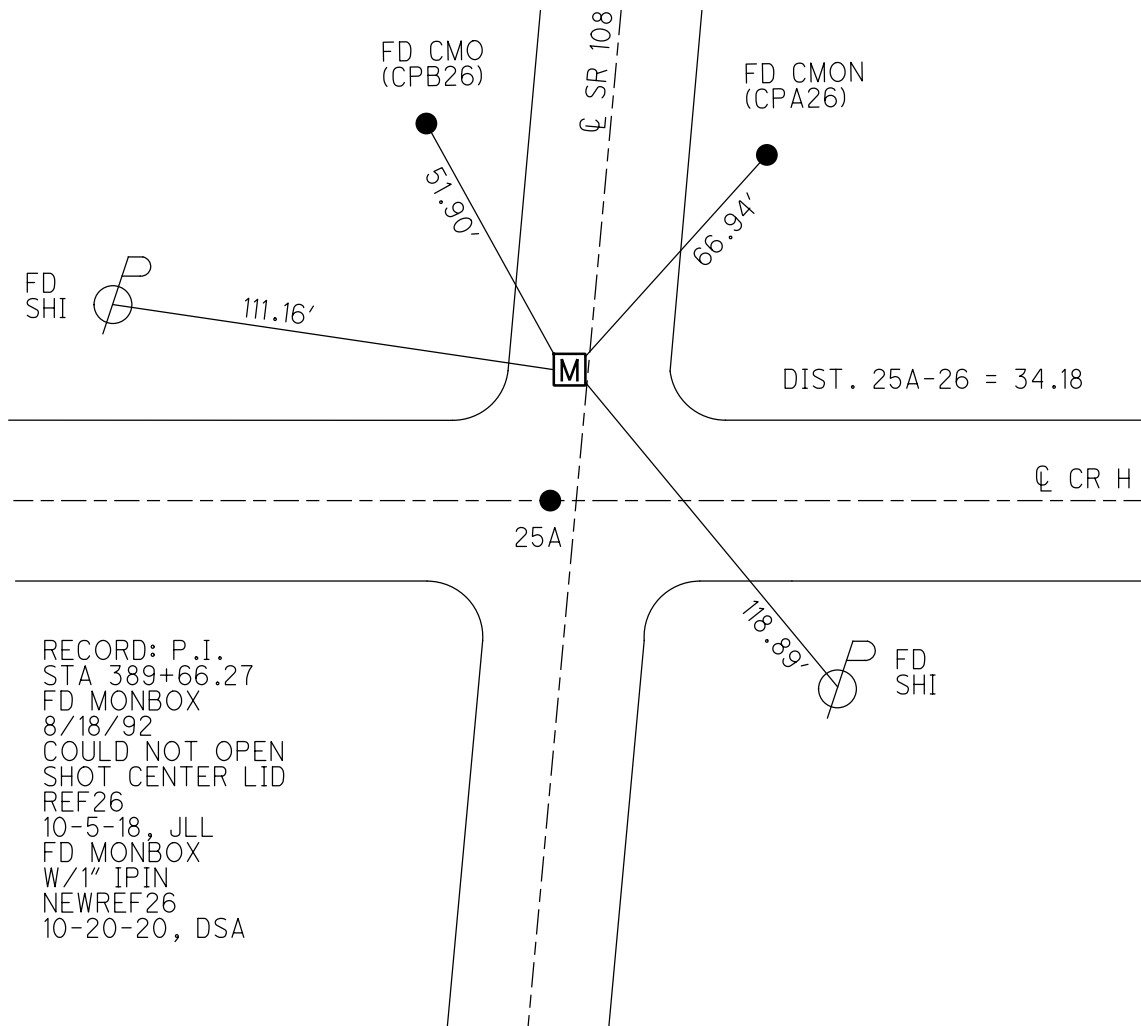
O.D.O.T. DISTRICT 2 SURVEY OFFICE (USE ONLY)

PERSONNEL _____ REFERENCE NO. 26 SHEET 12 OF 48
 NOTES ELKHECHEN DATE 11/5/18 ROUTE SR 108
 H.C. LUE WEATHER CLOUDY COUNTY HENRY
 R.C. MILLER TEMP. 51° TOWNSHIP FLATROCK
 DWG BY MILLER PID 94319 SECTION 36
 T 4 N R 6 E

TYPE MONUMENT MONBOX
 ON SURFACE - ~~BELOW~~ ON _____
 OFFSET ϕ PAVEMENT 3.0' LT : RT
8.7' TO LT EDGE PAVEMENT
 STATION: 389+51.06



HORZ. DATUM: NAD83 (2011) GEOID: 2012A
 GRID: NORTHING: 587653.840 EASTING: 1522732.555



O.D.O.T. DISTRICT 2 SURVEY OFFICE

PERSONNEL

REFERENCE NO. 26

SHEET 31 OF 54

NOTES VANDUSEN

H.C. KUSZ

DATE 8-18-92

ROUTE SR 108

R.C. BARNHISEL

WEATHER CLOUDY

COUNTY HENRY

TEMP. +75° F

TOWNSHIP FLAT ROCK

SECTION 36

T A N R G E

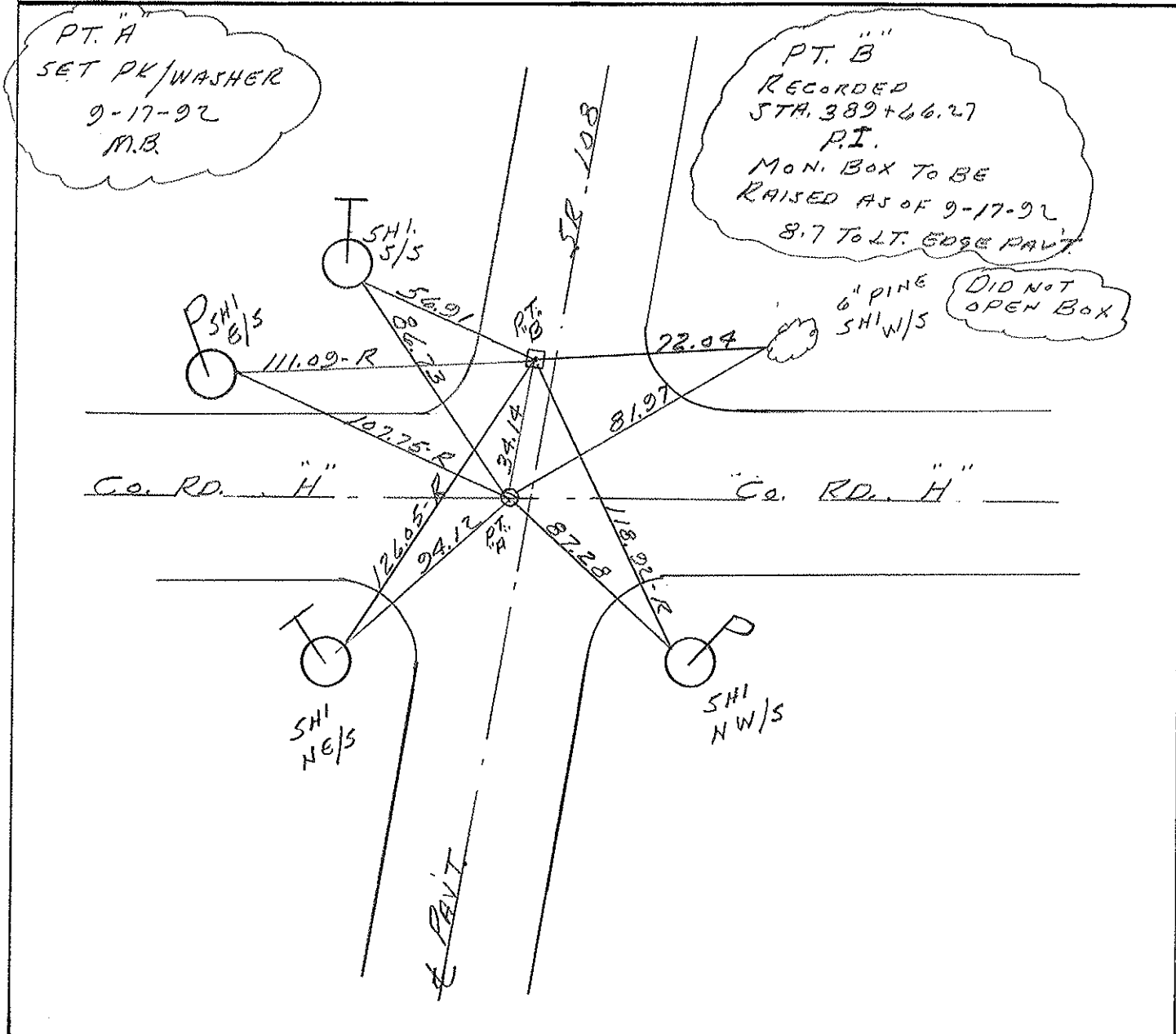
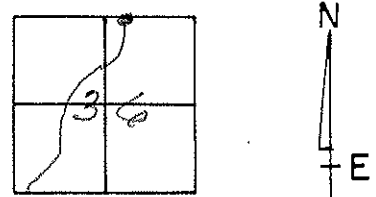
TYPE MONUMENT PT. A PK/WASHER PT. B MON. BOX

ON SURFACE - BELOW YES

LEFT - & PAV'T. - RIGHT 2.3 2.9

TO EDGE PAVEMENT

S.L.M. PT. A 388+07 PT. B 388+40



County HENRY S.R. 108

Township FLATROCK

Section 36

T4N, R6E

Personnel Hoffman

Loehrke HC

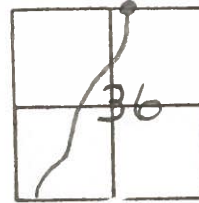
Householder RC

Barnhisel Notes

Date 6-28-84

Weather Sunny

Temp. +82°



8-27-84

Mon Box

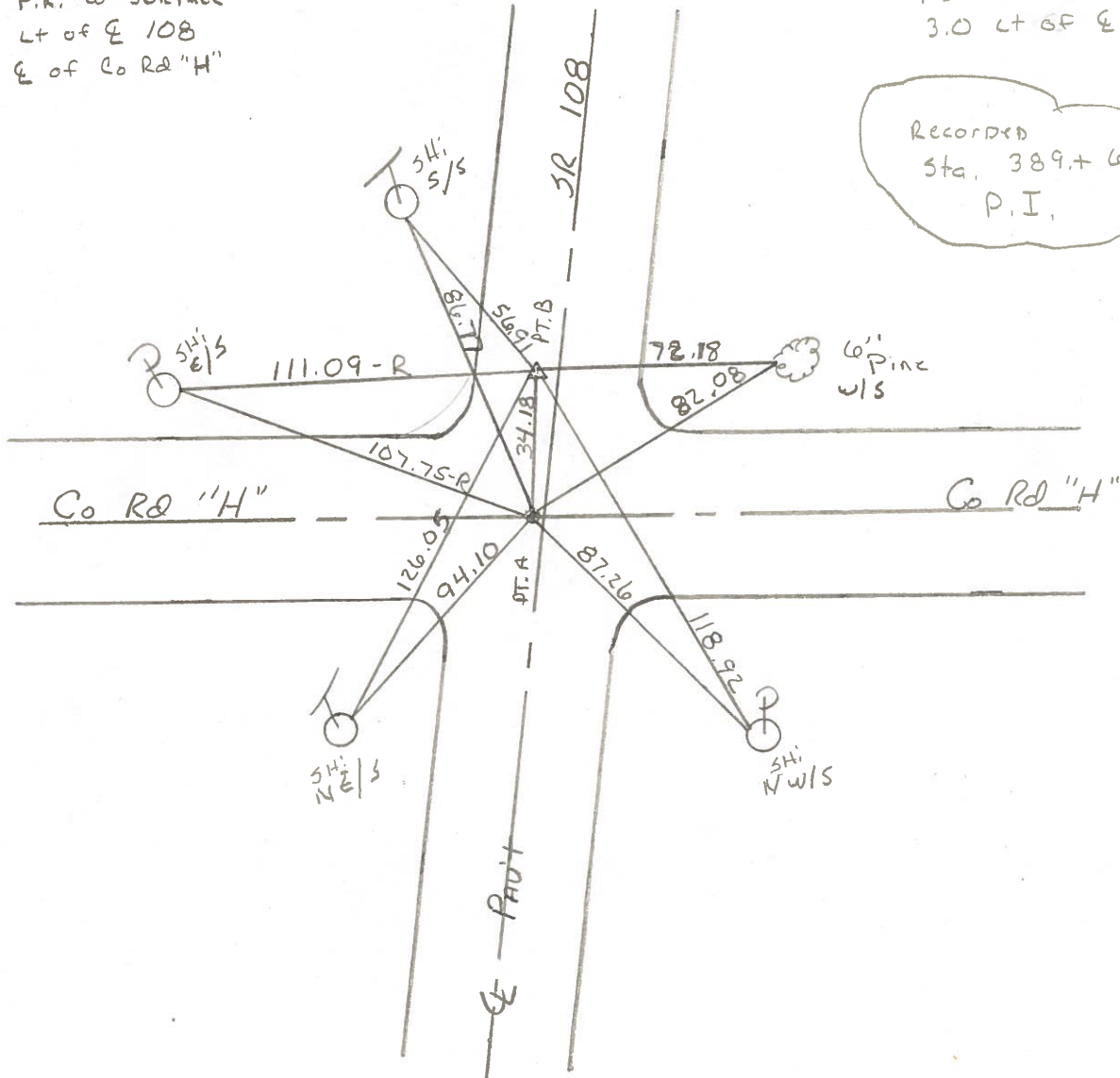
26

DID NOT RAISE
SET PK ABOVE Mon Box
M. D. B.

PT. "A"
56M 388+88
FD P.K. @ surface
1.7 Lt of E 108
On E of Co Rd "H"

PT. "B"
56M 389+22
FD PK @ surface
3.0 Lt of E 108

Recorded
Sta. 389.+ 66.27
P.I.



PERSONNEL TITLE PERSONNEL TITLE

Tomsic
Neuser
Vanyo
Granata

COUNTY HENRY DATE July 24, 1974

S. R. 108 WEATHER

SEC. Flatrock Twp. TEMP.

DESCRIPTION

LEFT

CENTER LINE

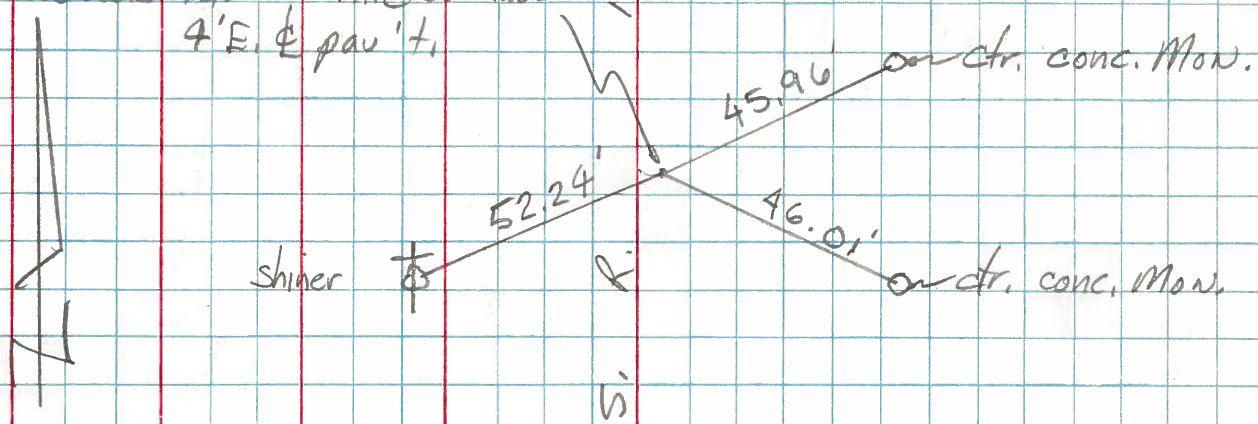
RIGHT

JOB NO.

Sta. 402+84.49
P.I.

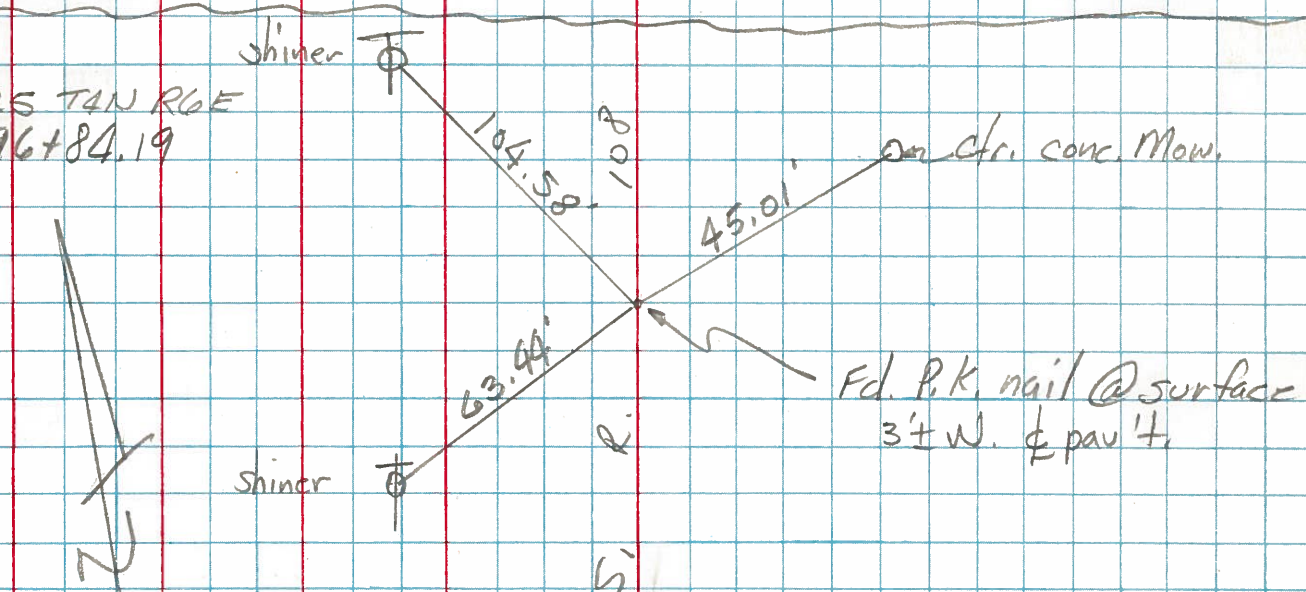
Sec. 25 T4N R6E Fd. P.K. nail @ surface
4'E. & pav't.

29



Sec. 25 T4N R6E
Sta. 396+84.19
P.I.

27



Sta. 389+66.27
P.I. sta.

26

(Sec. 25)
(Sec. 36)

