

O.D.O.T. DISTRICT 2 SURVEY OFFICE (USE ONLY)

PERSONNEL \_\_\_\_\_

REFERENCE NO. 35 A

SHEET 21 OF 48

NOTES LEU

DATE 3/19/20

ROUTE SR 108

H.C. LEU

WEATHER FOG

COUNTY HENRY

R.C. BALBAUGH

TEMP. 40°

TOWNSHIP FLATROCK

SECTION 25

DWG BY BALBAUGH

PID 94319

T 4 N R 6 E

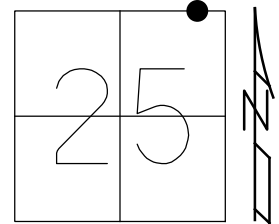
TYPE MONUMENT MAG/WASHER

ON SURFACE - ~~BELOW~~ ON

OFFSET  $\odot$  PAVEMENT 15.4' LT : ~~RT~~

- TO - EDGE PAVEMENT

STATION: 444+53.34



HORIZ. DATUM: NAD83 (2011)

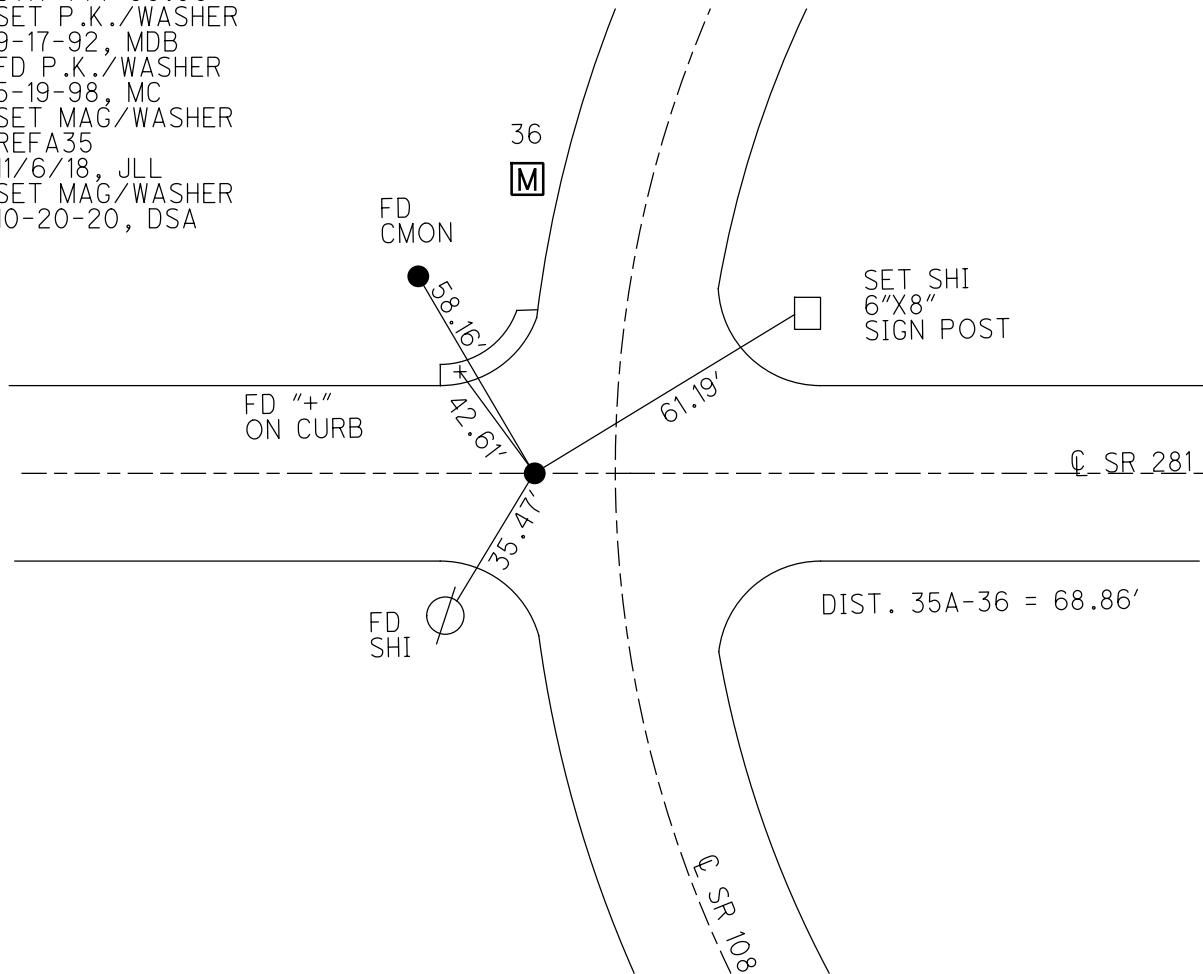
GEOID: 2012A

GRID: NORTHING: 592911.473

EASTING: 1523949.701

RECORD: P.I.  
 STA 444+96.06  
 SET P.K./WASHER  
 9-17-92, MDB  
 FD P.K./WASHER  
 5-19-98, MC  
 SET MAG/WASHER  
 REFA35  
 11/6/18, JLL  
 SET MAG/WASHER  
 10-20-20, DSA

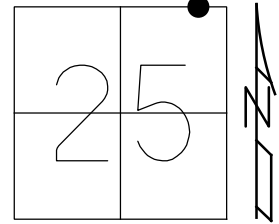
NOTE: REF 12A SR 281



O.D.O.T. DISTRICT 2 SURVEY OFFICE (USE ONLY)

PERSONNEL \_\_\_\_\_ REFERENCE NO. 35A SHEET \_\_\_\_\_ OF \_\_\_\_\_  
 NOTES CANTERBURY DATE 5/19/98 ROUTE SR 108  
 H.C. ROUSES WEATHER SUNNY COUNTY HENRY  
 R.C. HUSS TEMP. 80° TOWNSHIP FLATROCK  
 DWG BY JAMES PID 94319 SECTION 25  
 T 4 N R 6 E

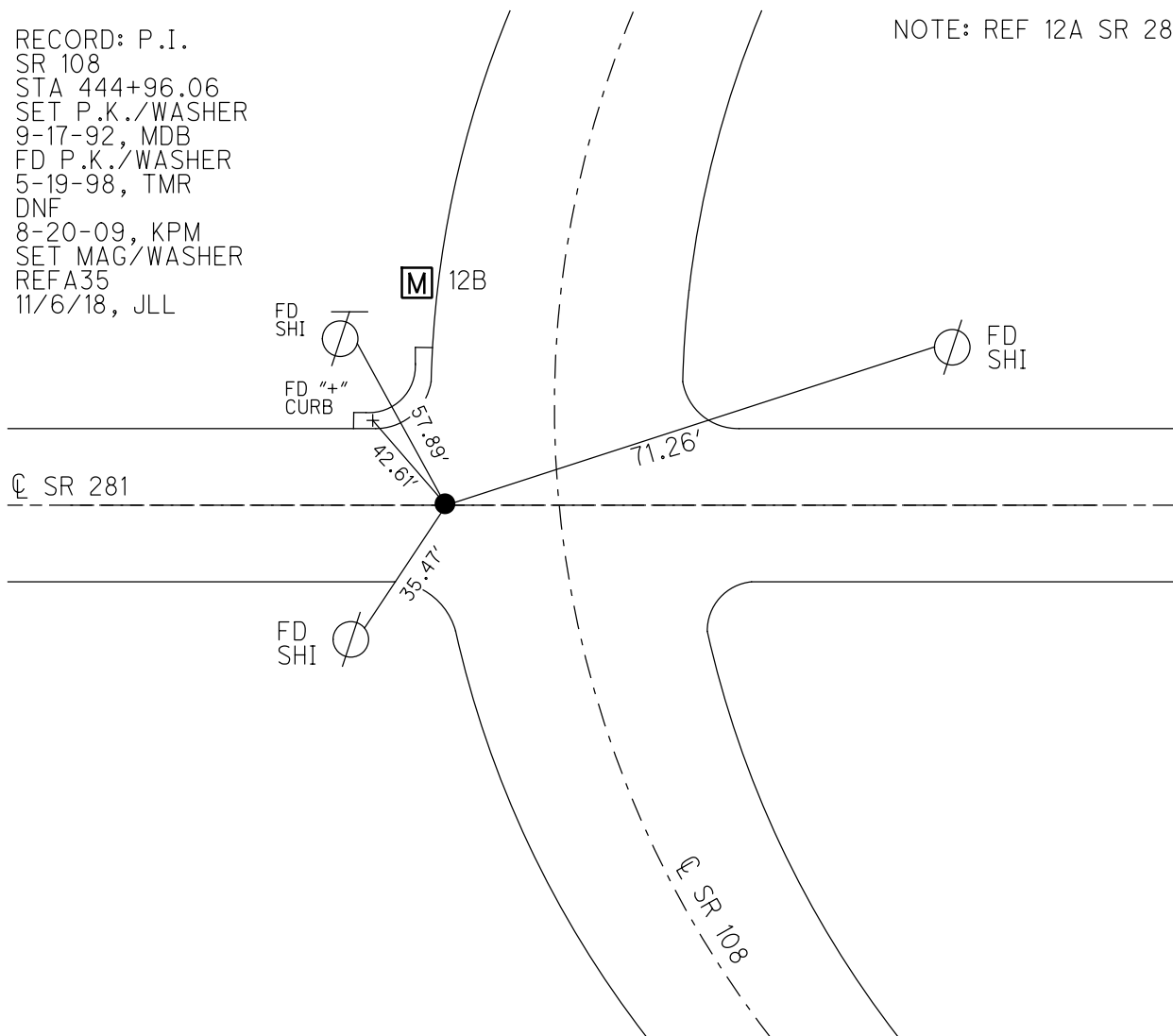
TYPE MONUMENT PK/WASHER  
 ON SURFACE - ~~BELOW~~ ON \_\_\_\_\_  
 OFFSET  $\odot$  PAVEMENT 15.4' LT : ~~RT~~  
 - TO - EDGE PAVEMENT  
 STATION: 444+96.06



HORZ. DATUM: NAD83 (2011) GEOID: 2012A  
 GRID: NORTHING: 592911.473 EASTING: 1523949.701

RECORD: P.I.  
 SR 108  
 STA 444+96.06  
 SET P.K./WASHER  
 9-17-92, MDB  
 FD P.K./WASHER  
 5-19-98, TMR  
 DNF  
 8-20-09, KPM  
 SET MAG/WASHER  
 REFA35  
 11/6/18, JLL

NOTE: REF 12A SR 281



# O.D.O.T. DISTRICT 2 SURVEY OFFICE

PERSONNEL \_\_\_\_\_

REFERENCE NO. 36 <sup>(SR 108)</sup>  
12-A (SR 281)

SHEET 40 OF 54

NOTES Canterbury

H.C. Rodson

R.C. Huss

DATE 5-19-98

WEATHER Sunny

TEMP. + 80°F

ROUTE 108+281

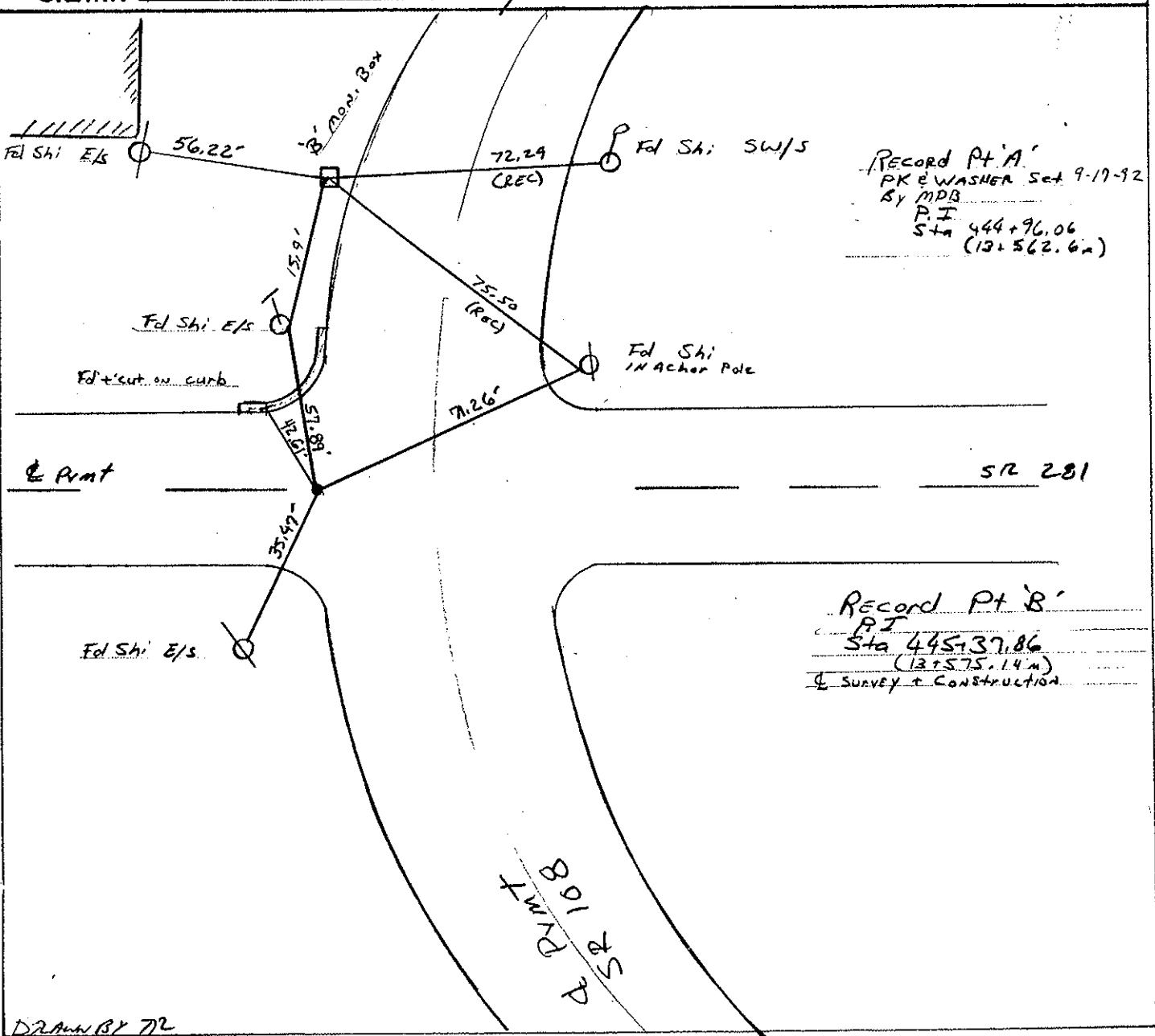
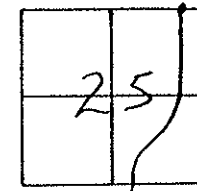
COUNTY Henry

TOWNSHIP Flatrock

SECTION 25

T 4 N R 6 E

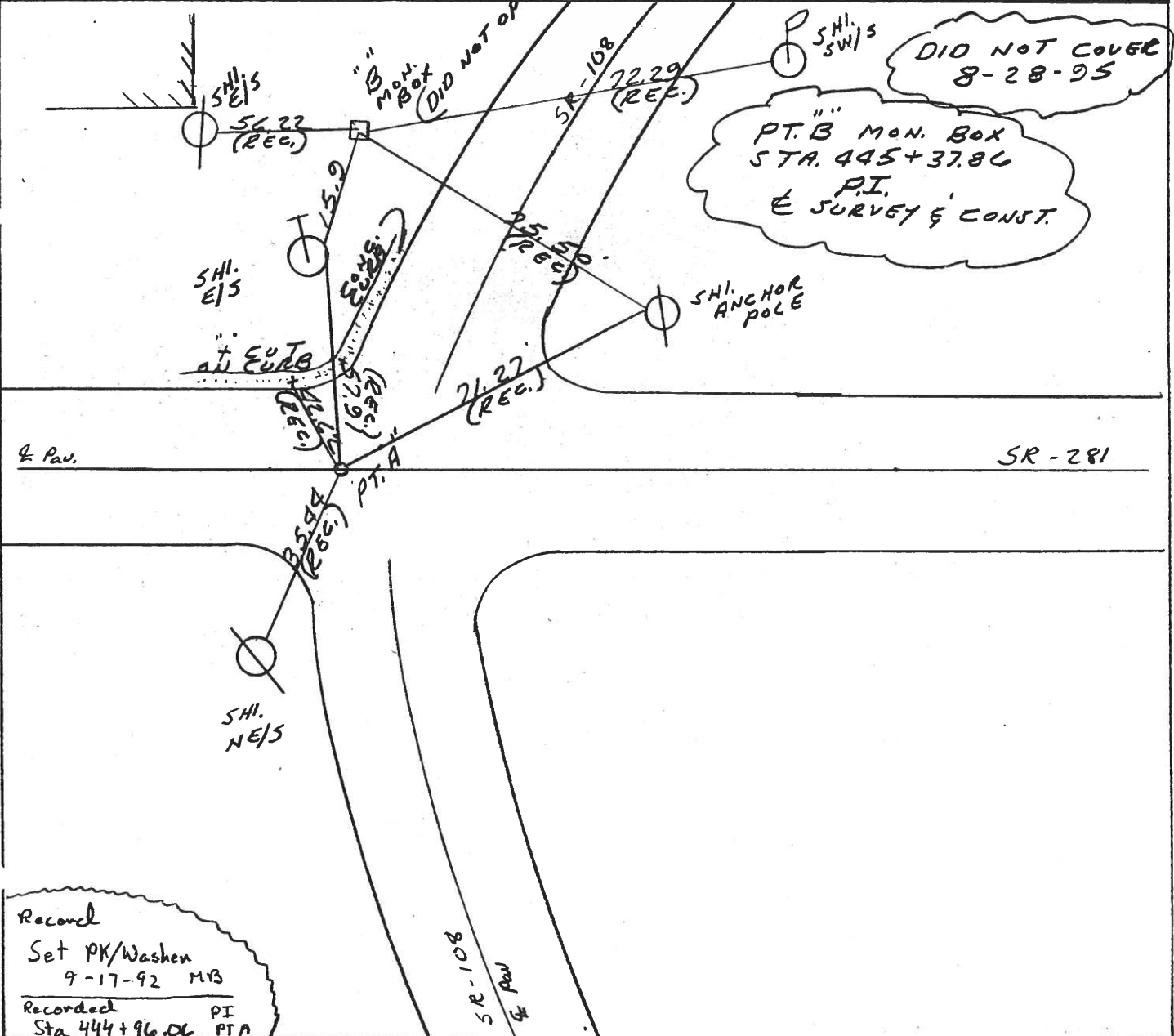
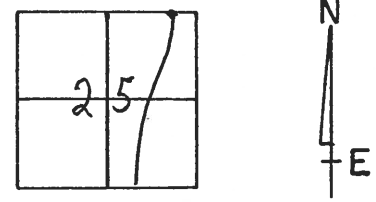
TYPE MONUMENT Pl 'A' - PK & Washer  
Pl 'B' - Man Box  
 ON SURFACE - ~~BELOW~~ Path on Surface  
 LEFT - ~~PAV'T.~~ RIGHT 15.4' Lt of E SR 108  
 TO EDGE PAVEMENT  
 S.L.M. 13+522.96 SR 108 sta / 9+184.15 se 281 sta



# O.D.O.T. DISTRICT 2 SURVEY OFFICE

PERSONNEL \_\_\_\_\_  
 NOTES HUSS  
 H.C. VAN DUJEN DATE 6-13-95 ROUTE SR-108  
 R.C. ROUSOS WEATHER SUNNY COUNTY Henry  
 \_\_\_\_\_ TEMP. +70°F TOWNSHIP Flatrock  
 \_\_\_\_\_ SECTION 25  
 \_\_\_\_\_ T 4 N R 6 E

TYPE MONUMENT PT A = PK & WASHER  
 ON SURFACE - BELOW YES PT. B Mon. Box  
 LEFT - & PAV'T. - RIGHT 15.4 PT. A  
 TO EDGE PAVEMENT  
 S.L.M. 443+66 PT A



Record  
 Set PK/Washer  
 9-17-92 MVB  
 Recorded PI  
 Sta 444+96.06 PT A

# O.D.O.T. DISTRICT 2 SURVEY OFFICE

PERSONNEL

REFERENCE NO. 36

SHEET 40 OF 54

NOTES VAN DUSEN

H.C. KUSZ

R.C. BARNHISEL

DATE 8-18-02

WEATHER CLEAR

TEMP. +75° F

ROUTE SR 108

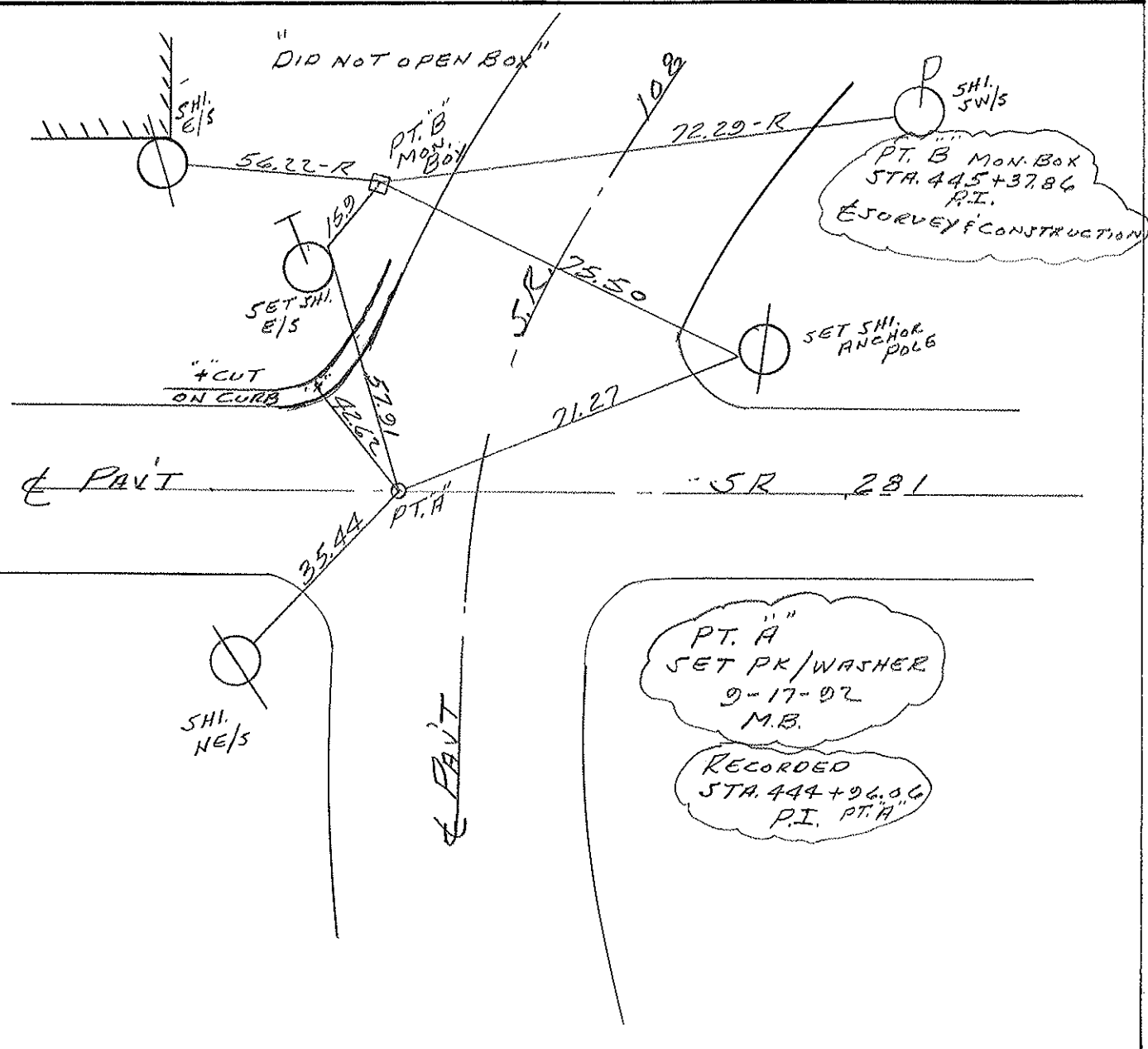
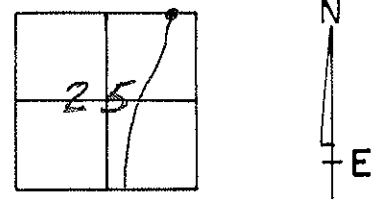
COUNTY HENRY

TOWNSHIP FLATROCK

SECTION 25

T. 4 N. R. 6 E

TYPE MONUMENT PT. A PK/WASHER  
 ON SURFACE - BELOW YES  
 LEFT - CL PAV'T. - RIGHT 15.4 PT. A  
 TO EDGE PAVEMENT  
 S.L.M. 443+66 PT. A



PT. A  
 SET PK/WASHER  
 9-17-02  
 M.B.  
 RECORDED  
 STA. 444+96.06  
 P.I. PT. A

County Henry S.R. 108

Date 6-28-84

Township Flatrock

Weather Sunny

Section 25

Temp. +82°

T4N, R6E

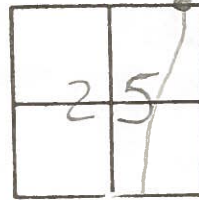
Personnel Hoffman

Loehrke ITC

Householder RC

Barnhiser Notes

36



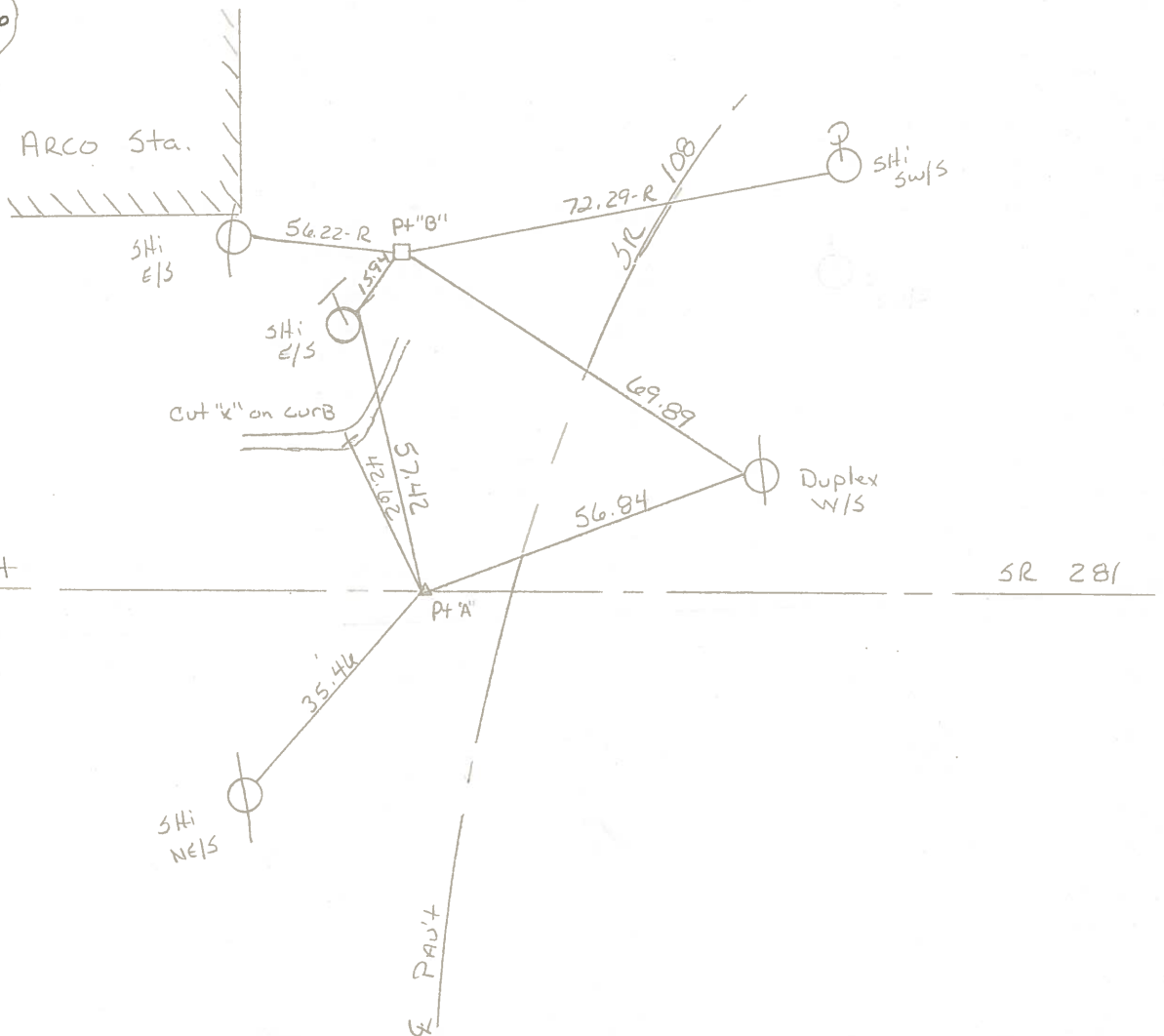
Pt. "A"

SLM 444421  
on E of 281  
15.4 ft of E 108  
3.5 ft of 4 EP  
Fd lg RL/spk  
@ Surface

Pt. "B"  
SLM 444+89  
Fd Mon Box @ Surface  
2' W of W Curb 108

Recorded  
sta 445+37.86  
P.I.  
E Survey + Construction

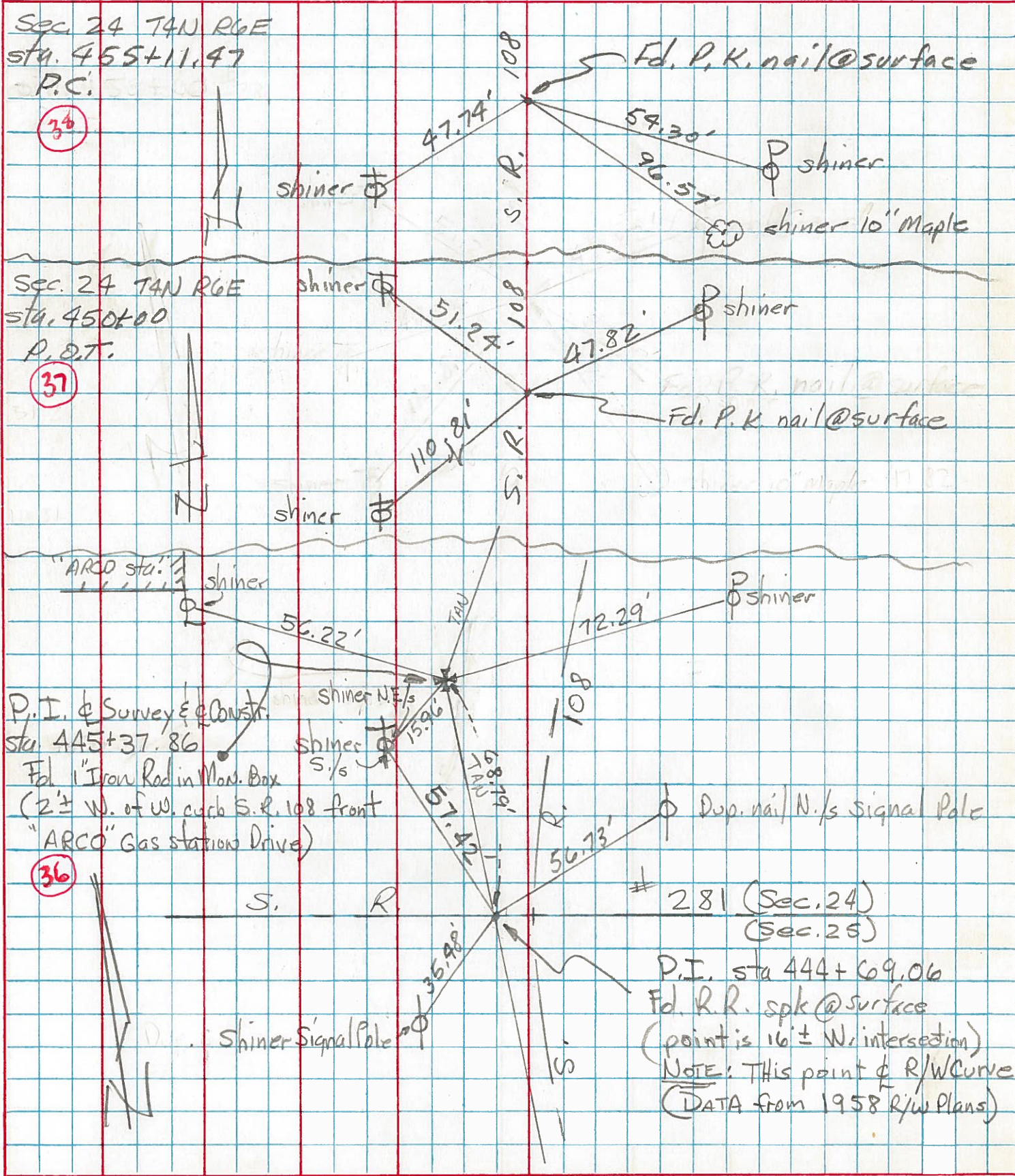
Recorded  
sta. 444+69.06  
P.I.



PERSONNEL	TITLE	PERSONNEL	TITLE
Tomsic			
Neuser			
Tanyo			
Granata			

COUNTY HENRY DATE July 25, 1974  
 S. R. 108 WEATHER \_\_\_\_\_  
 SEC. Flatrock TWP. TEMP. \_\_\_\_\_

DESCRIPTION \_\_\_\_\_ LEFT \_\_\_\_\_ CENTER LINE \_\_\_\_\_ RIGHT \_\_\_\_\_ JOB NO. \_\_\_\_\_



County Rd.

"L" va

Flatrock

Spike

Monroe

vb

Found (stake)  
C O.K.

Found (stake)  
E O.K.

12

P.K. Joseph  
O.K.

Dig  
Stone  
O.K.

"K" vc

O.K. estab (stake)  
NO

13

(Found) stake

"J" ve

Dig P.K. 79.1

Dig B P.K. No Loose

vf

2670.8 ft. in Tree

Found (stake)

24

Found (stake)

NO

1335.5

Dig C

NO

XE

1227.9

D

NO

19

XE

S.P.  
"281"

Iron Pin

1747.29

89.12

90.35  
89.25

1/2 mi

1/4 mi

1/2 mi

1/4 mi

1/2 mi



## Flatrock Sec 12

(on SE 108)

(X) Hubrail N.W. 26.92  
do S.W. 15.19

B Spk in light pole 21.3'S.

S.W. cor. Conc Anc. Post 20.75 N.

Spk. in Sq. Fence Post 24.45' N.N.E.

To Iron Fence Post 26.6' N.N.W.

(Found) C Stone lies 1' E. of anc. for W. Fence 2'S. anc W. fence

(Not Found) E. Found Stone N. side Anc Post.

## Flatrock Sec 13

B S.E. cor. Brick Parsonage 30.4' S.E.

S.E. cor. Church (brick) 111.2' S.E.

Nail in P.P. 36.0' S.

Nail in Post 37.4' S.

C Stone lies 4" S.E. of Anc. Post  
(tile over stone)

Monroe Twp. Cor. marked by large oak post 10' S  
of Flatrock Stone

## Monroe - Sec 7

A 8" Maple 47.7' S.W.

1st Post E. of Anc. P. 22.0' N.N.E.

Cor. C.B. 29.0' S.E.

C S. to tack in 2nd Post S. of Cor. Post 49.89'

N. 10° W. tack T.P. 38.30'

N. 45° W. tack in stake 52.05'

(Stone lies S. edge metal - 18" below surface)

B. Stone 1.5' N. of Anc. 4 on N.E. side (old stub anc.)

## Monroe Sec 18

B. 12" cherry 32.8' S.W.

Cor. Post 25' S.

24" cherry 30' E.S.E.

C. Found stone with stake under

Cor Post new 33.1' N.

Cor. Post 23.6' S.

Monroe Sec 18

E. Stone lies S. side anc. post

F. Stone lies N.W. side Anc post

Flat Rock Sec 24

A - Spk. in Tree

B - Spk. in Anc. Post 32.0' W.N.W.

" " Walnut tree 28.1 N.

" " Light Pole 11.0' S.S.E.

C. - Spk. in Anc. Post 15.2' N.

" " " " 32.1' E.N.E.

Monroe Twp. Stone 5.9' S.

D. - set stake 25 links E. of witness stone

E. - Stone

Monroe Twp. Sec. 19

E. - Stone N.W. cor. of Rail fences

