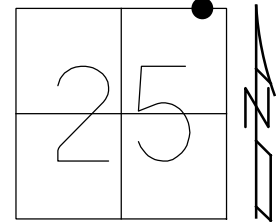


O.D.O.T. DISTRICT 2 SURVEY OFFICE (USE ONLY)

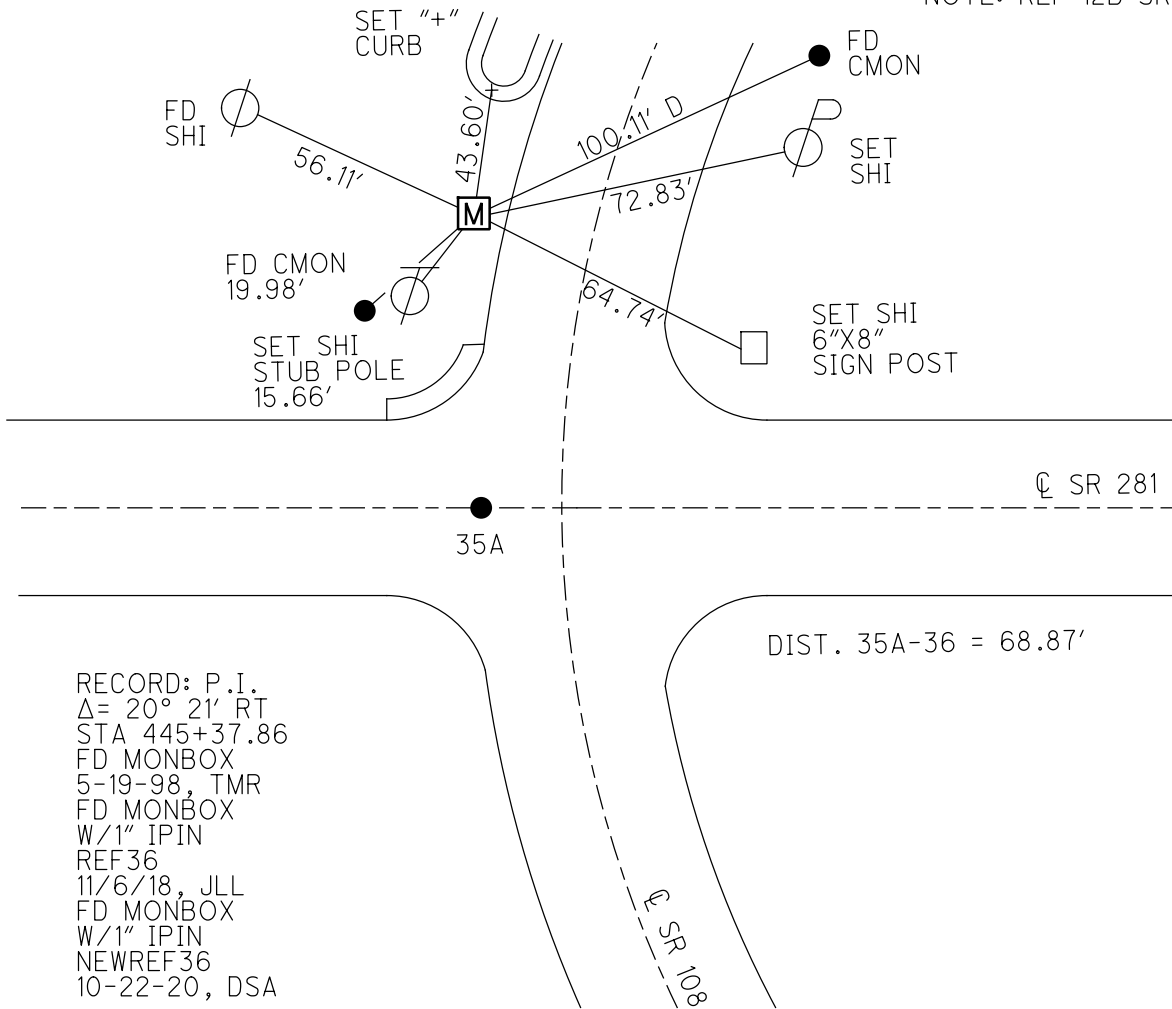
PERSONNEL \_\_\_\_\_ REFERENCE NO. 36 SHEET 22 OF 48  
 NOTES LEU DATE 3/19/20 ROUTE SR 108  
 H.C. LEU WEATHER FOG COUNTY HENRY  
 R.C. BALBAUGH TEMP. 40° TOWNSHIP FLATROCK  
 DWG BY BALBAUGH PID 94319 SECTION 25  
 T 4 N R 6 E

TYPE MONUMENT MONBOX W/ 1" IPIN  
 ON SURFACE - ~~BELOW~~ ON \_\_\_\_\_  
 OFFSET  $\varnothing$  PAVEMENT 15.4' LT : ~~RT~~  
 - TO - EDGE PAVEMENT  
 STATION: 445+20.67



HORZ. DATUM: NAD83 (2011) GEOID: 2012A  
 GRID: NORTHING: 592978.650 EASTING: 1523934.669

NOTE: REF 12B SR 281

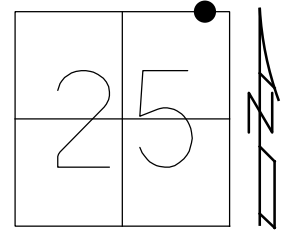


RECORD: P.I.  
 $\Delta = 20^\circ 21' RT$   
 STA 445+37.86  
 FD MONBOX  
 5-19-98, TMR  
 FD MONBOX  
 W/1" IPIN  
 REF36  
 11/6/18, JLL  
 FD MONBOX  
 W/1" IPIN  
 NEWREF36  
 10-22-20, DSA

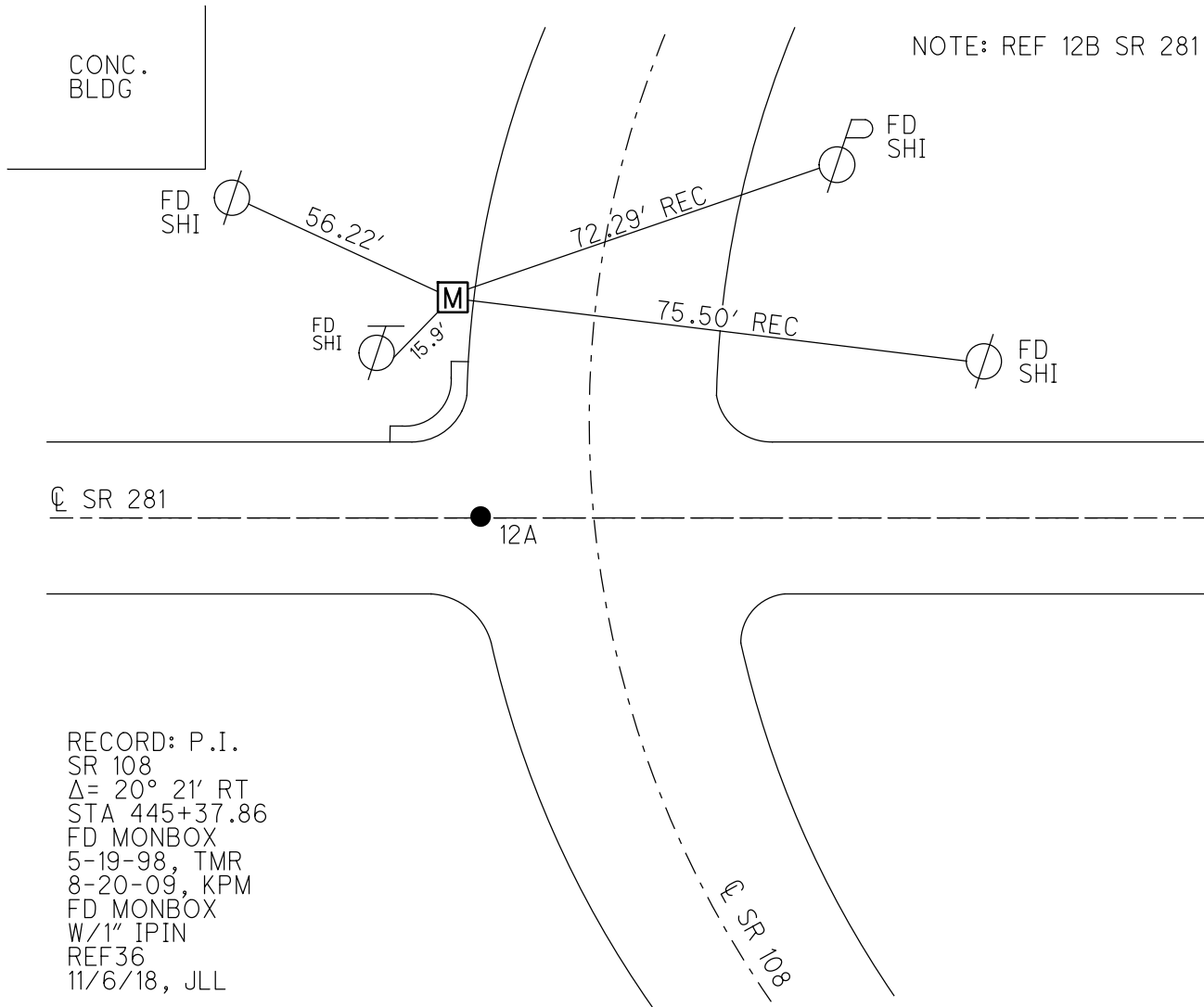
O.D.O.T. DISTRICT 2 SURVEY OFFICE (USE ONLY)

PERSONNEL \_\_\_\_\_ REFERENCE NO. 36 SHEET \_\_\_\_\_ OF \_\_\_\_\_  
 NOTES CANTERBURY DATE 5/19/98 ROUTE SR 108  
 H.C. ROUSOS WEATHER SUNNY COUNTY HENRY  
 R.C. HUSS TEMP. 80° TOWNSHIP FLATROCK  
 SECTION 25  
 DWG BY JAMES PID 94319 T 4 N R 6 E

TYPE MONUMENT MON BOX  
 ON SURFACE - ~~BELOW~~ ON \_\_\_\_\_  
 OFFSET  $\odot$  PAVEMENT 15.4' LT : RT  
 \_\_\_\_\_ TO \_\_\_\_\_ EDGE PAVEMENT  
 STATION: 445+37.14



HORZ. DATUM: NAD83 (2011) GEOID: 2012A  
 GRID: NORTHING: 592978.643 EASTING: 1523934.676



# O.D.O.T. DISTRICT 2 SURVEY OFFICE

PERSONNEL \_\_\_\_\_

REFERENCE NO. 36 <sup>(SR 108)</sup>  
12-A (SR 281) SHEET 40 OF 54

NOTES Canterbury

H.C. Rodson

R.C. Huss

DATE 5-19-98

WEATHER Sunny

TEMP. + 80°F

ROUTE 108+281

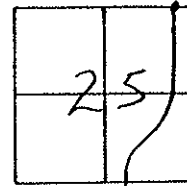
COUNTY Henry

TOWNSHIP Flatrock

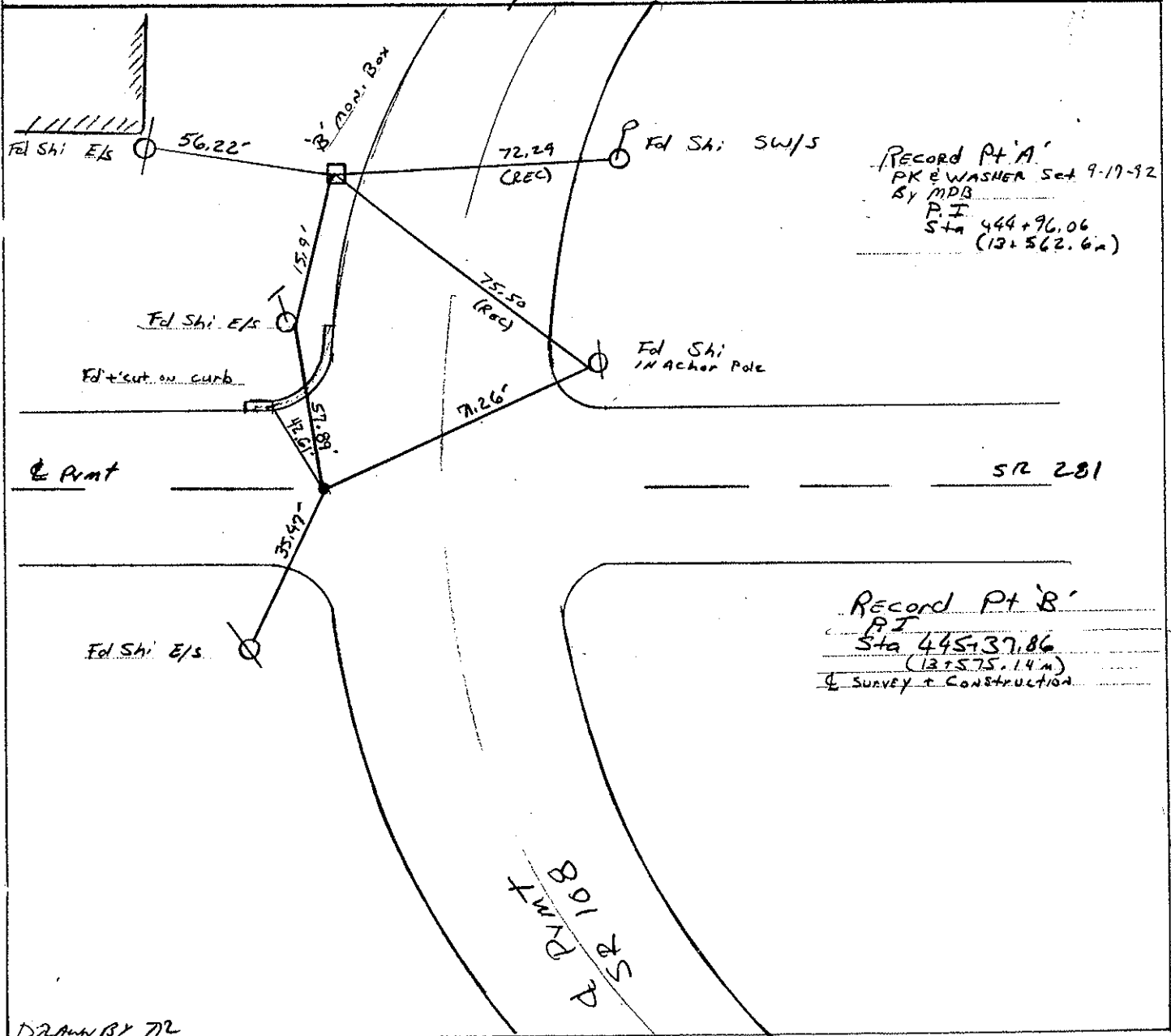
SECTION 25

T 4 N R 6 E

TYPE MONUMENT Pl 'A' - PK & Washer  
Pl 'B' - Man Box  
 ON SURFACE - ~~BELOW~~ Path on Surface  
 LEFT - ~~PAV'T.~~ RIGHT 15.4' Lt of & SR 108  
 TO EDGE PAVEMENT



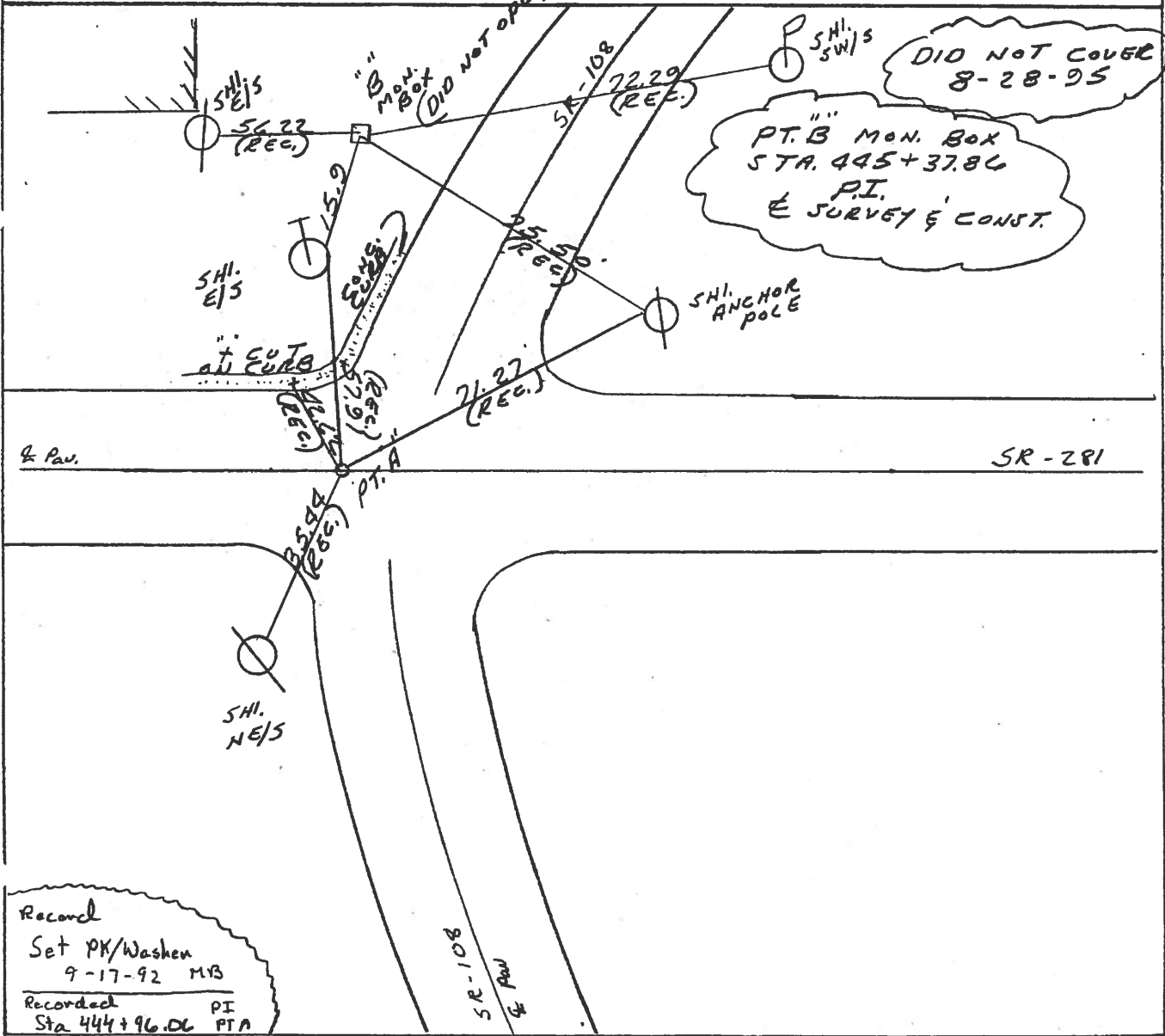
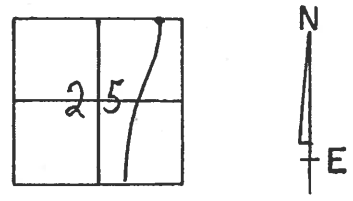
S.L.M. 13+522.96 SR 108 sta / 9+184.15 se 281 sta



O.D.O.T. DISTRICT 2 SURVEY OFFICE

PERSONNEL \_\_\_\_\_  
 NOTES HUSS  
 H.C. VAN DUJEN DATE 6-13-95 ROUTE SR-108  
 R.C. COUSOS WEATHER SUNNY COUNTY Henry  
 \_\_\_\_\_ TEMP. +70°F TOWNSHIP Platrock  
 \_\_\_\_\_ SECTION 25  
 \_\_\_\_\_ T 4 N R 6 E

TYPE MONUMENT PT A = PK & WASHER  
 ON SURFACE - BELOW YES PT. B MON. BOX  
 LEFT - 6 PAV'T. - RIGHT 15.4 PT. A"  
 \_\_\_\_\_ TO \_\_\_\_\_ EDGE PAVEMENT  
 S.L.M. 443+66 PT. A"



Recorded  
 Set PK/Washer  
 9-17-92 MVB  
 Recorded PI  
 Sta 444+96.06 PTA

# O.D.O.T. DISTRICT 2 SURVEY OFFICE

PERSONNEL

REFERENCE NO. 36

SHEET 40 OF 54

NOTES VAN DUSEN

H.C. KUSZ

DATE 8-18-02

ROUTE SR 108

R.C. BARNHISEL

WEATHER CLEAR

COUNTY HENRY

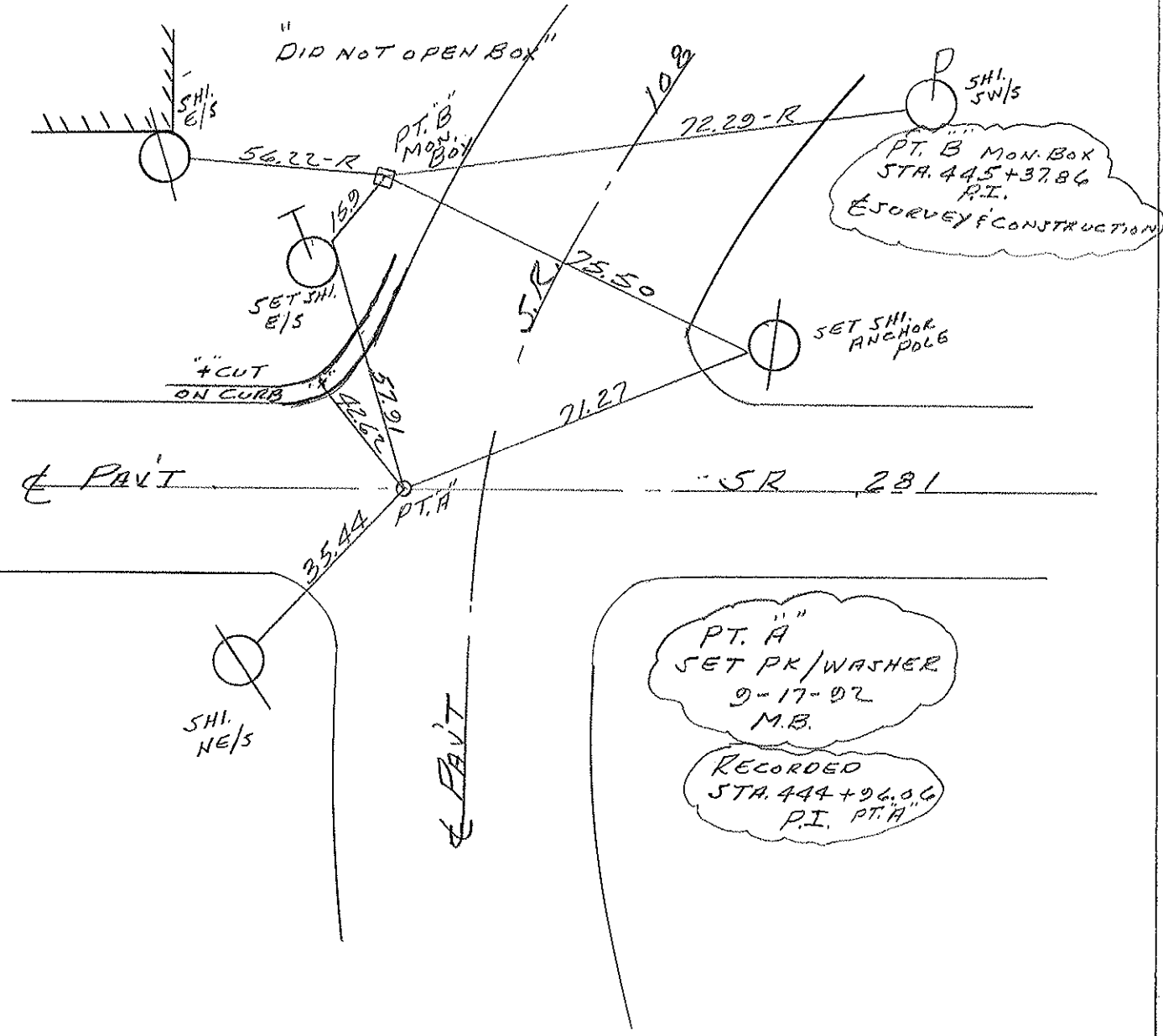
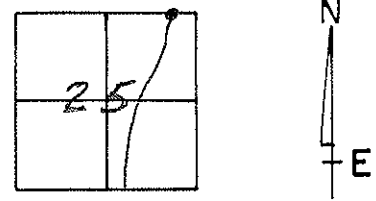
TEMP. +75° F

TOWNSHIP FLATROCK

SECTION 25

T. 4 N. R. 6 E

TYPE MONUMENT PT. A PK/WASHER  
 ON SURFACE - BELOW YES  
 LEFT - CL PAV'T. - RIGHT 15.4 PT. A  
TO EDGE PAVEMENT  
 S.L.M. 443+66 PT. A



County Henry S.R. 108

Date 6-28-84

Township Flatrock

Weather Sunny

Section 25

Temp. +82°

T4N, R6E

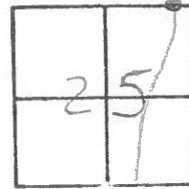
Personnel Hoffman

Loehrke IC

Householder RC

Barnhisel Notes

36



Pt. "A"

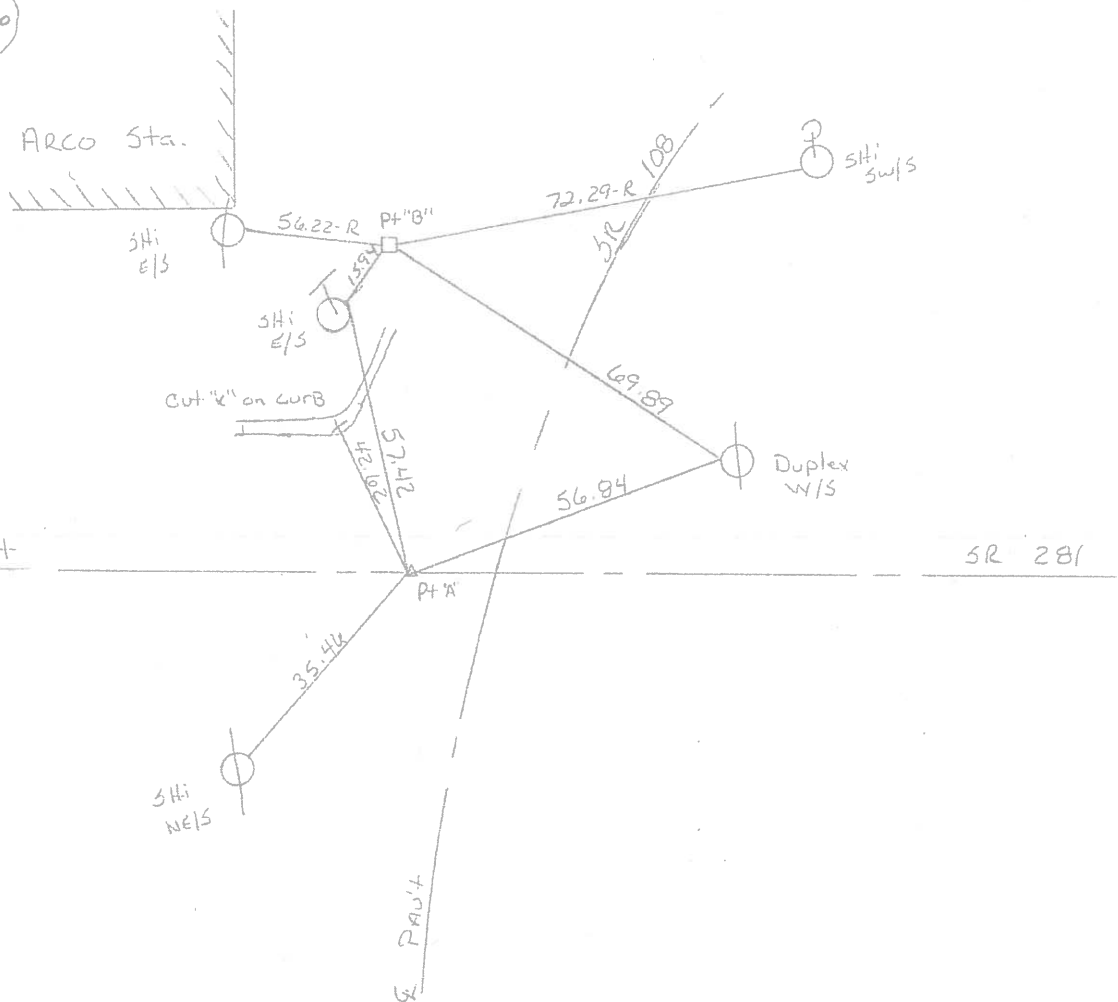
SLM 444421  
on E of 281  
15.4 ft of E 108  
3.5 ft of L+EP  
Fd lg RR/spk  
on Surface

Pt. "B"

SLM 444+89  
FD Mon Box on Surface  
2' W of W Curb 108

Recorded  
sta 445+37.86  
P.I.  
E Survey + Construction

Recorded  
sta. 444+69.06  
P.I.









PERSONNEL TITLE PERSONNEL TITLE

Louie \_\_\_\_\_ COUNTY Hen DATE 6/4/71

Erikson Researcher S. R. # 108 WEATHER Fair

Rav \_\_\_\_\_

Shaw \_\_\_\_\_ SEC. From Holgate N. Cord TEMP. 85°

DESCRIPTION Ref Const. Plan Dated 1958 JOB NO. \_\_\_\_\_

