

O.D.O.T. DISTRICT 2 SURVEY OFFICE (USE ONLY)

PERSONNEL

REFERENCE NO. 57

SHEET 43 OF 48

NOTES BALBAUGH

DATE 3/19/30

ROUTE SR 108

H.C. LEU

WEATHER OVERCAST

COUNTY HENRY

R.C. BALBAUGH

TEMP. 46°

TOWNSHIP NAPOLEON

SECTION 24

DWG BY GARRETT PID 94319

T 5 N R 6 E

TYPE MONUMENT SM.R.R.SPIKE SHANK

~~ON SURFACE~~ - BELOW 3"

OFFSET \odot PAVEMENT 0.4' LT : ~~RT~~

13.2' TO RT EDGE PAVEMENT

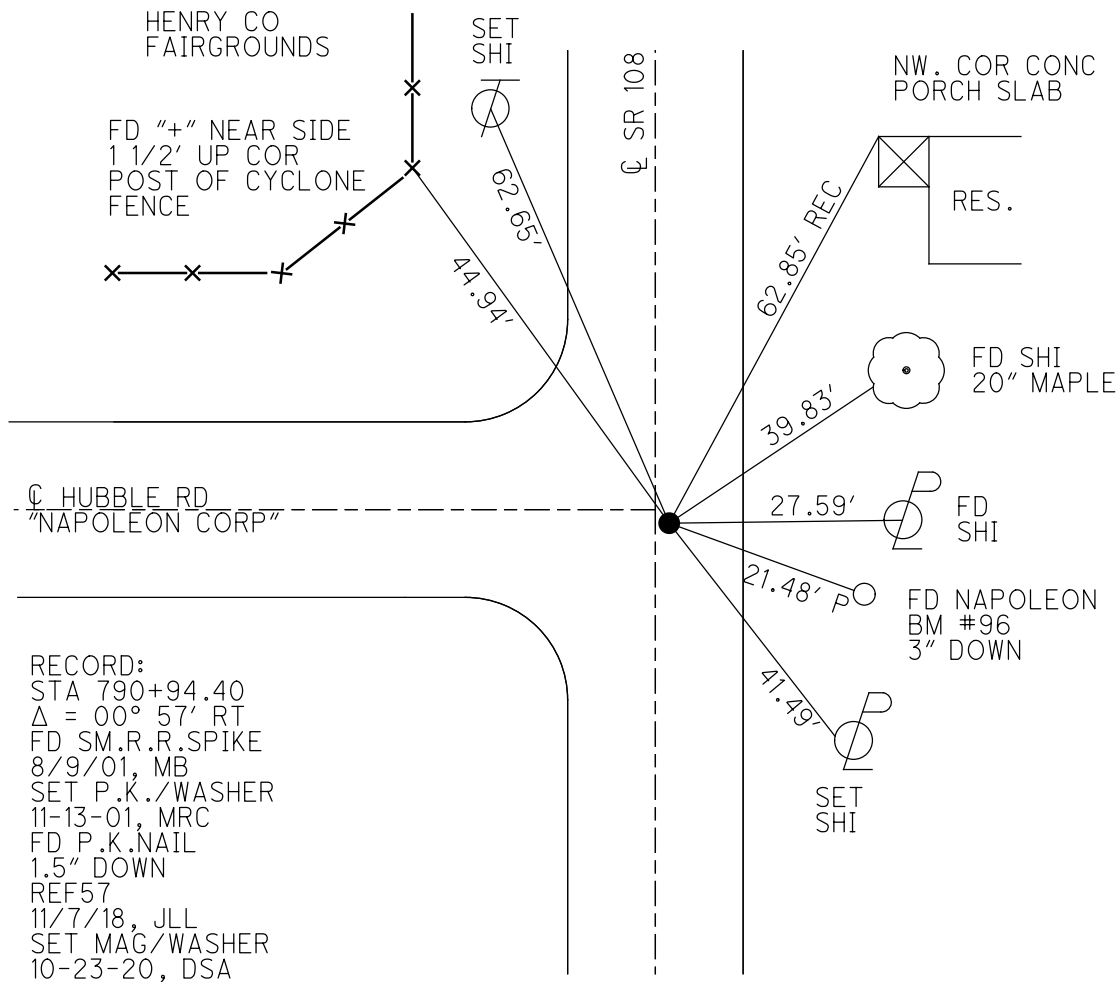
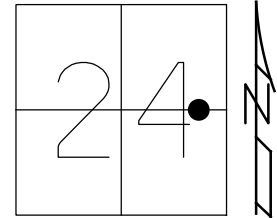
STATION: 790+70.35

HORIZ.DATUM: NAD83 (2011)

GEOID: 2012A

GRID: NORTHING: 627518.836

EASTING: 1523770.359



O.D.O.T. DISTRICT 2 SURVEY OFFICE

PERSONNEL

REFERENCE NO. 57

SHEET 8 OF 9

NOTES CANTERBURY

H.C. BARNHISEL

DATE 8-9-01

ROUTE 108

R.C. MOSE

WEATHER OVERCAST

COUNTY HENRY

DRAWN BY: MOSER

TEMP. 192°F

TOWNSHIP NAPOLEON

SECTION 24

T S N R L E

TYPE MONUMENT SMALL R.R. SNAKE

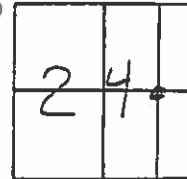
ON SURFACE - ~~BELOW~~ ON

~~LEFT - C.PAV'T.~~ - RIGHT 0.2' RT

13.2' TO RT. EDGE PAVEMENT

S.L.M. 790 + 25

RESET P.K/WASHER
 11/13/01
 M.R.C.

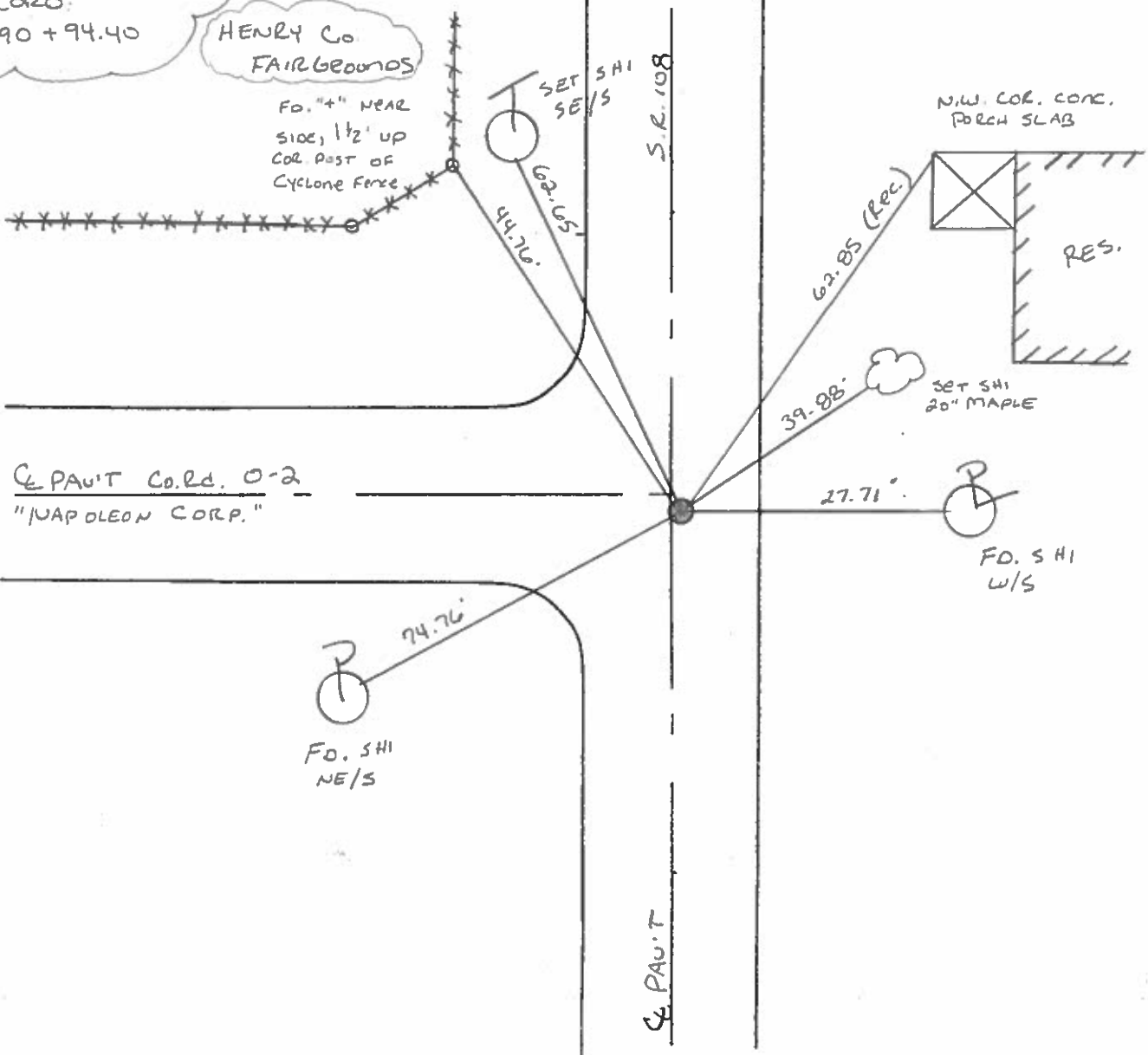


RECORD:

790 + 94.40

HENRY Co
 FAIRGEOMOS

Fd. "+" NEAR
 SIDE, 1/2' UP
 COR. POST OF
 CYCLONE FENCE



C.PAV'T COR. 0-2
"NAPOLEON CORP."

Fd. SHI
 NE/S

Fd. SHI
 W/S

O.D.O.T. DISTRICT 2 SURVEY OFFICE

PERSONNEL

REFERENCE NO. 57

SHEET 8 OF 33

NOTES HOFFMAN

H.C. BARNHISEL

DATE 3-25-88

ROUTE SR 108

R.C. LOSHRKE

WEATHER P. CLEAR

COUNTY HENRY

REED

TEMP. 60°

TOWNSHIP NAPOLÉON

SECTION 24

T S N R 6 E

TYPE MONUMENT SMALL R.R. SPIKE

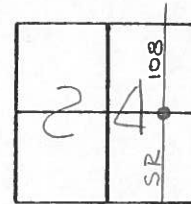
Set small RR SPIKE S-24-88 SWK

~~ON SURFACE - BELOW~~ 2"

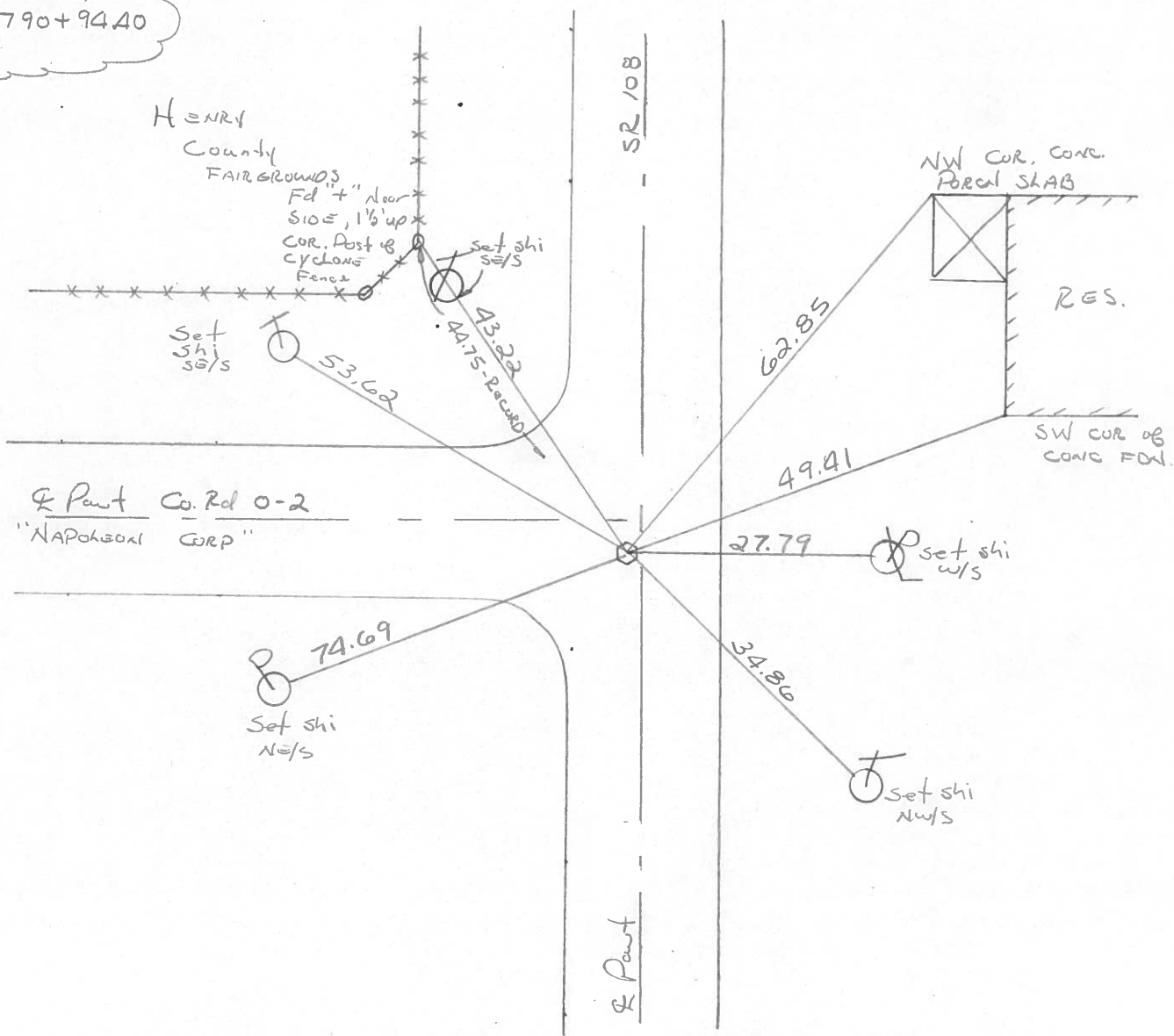
~~LEFT- & PAW'T. - RIGHT~~ 0.5

14.3 TO RT EDGE PAVEMENT *3.8' S. of & Pawt West*

S.L.M. 790 + 43



Record:
790+9440



O.D.O.T. DISTRICT 2 SURVEY OFFICE

Sht. 8 of 19
S.R. 108

County HENRY

Date 8-26-77

Township NAPOLEON

Weather CLEAR

Section 24

Temp. +72°

T5N, R6E

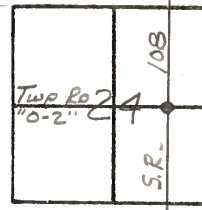
Personnel BURNSIDE

SMITH

BOWERS

KNAPE

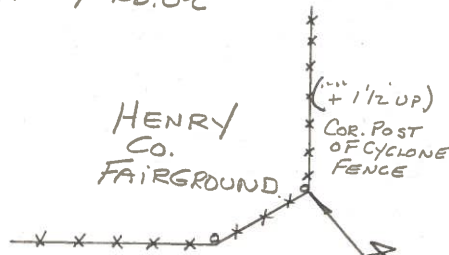
MEAD



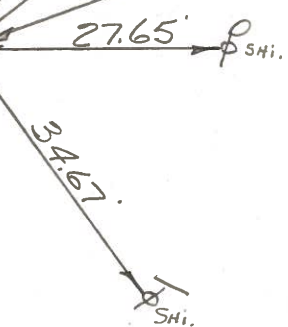
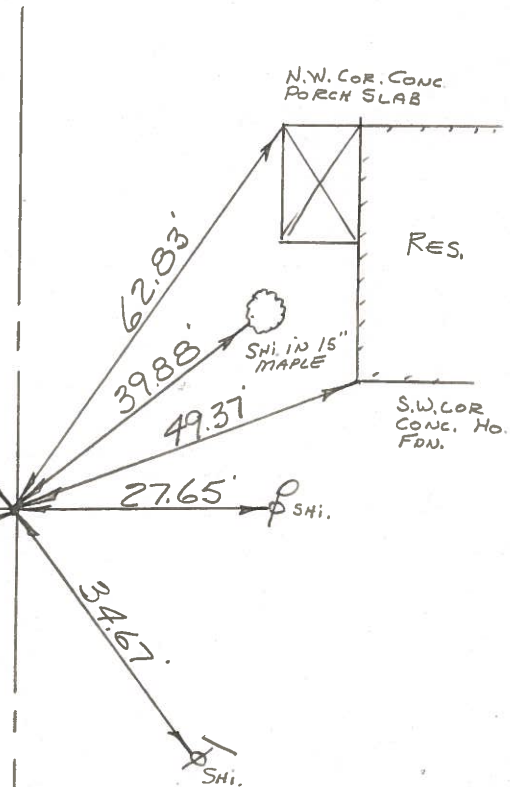
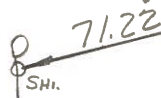
#5

FD. SMALL R.R. SPK.
@ SURFACE, ON CTR.
PAVE. S.R. 108 & 5' I
S. OF CTR. PAVE. TWP RD. 02

STA. 790+94.40



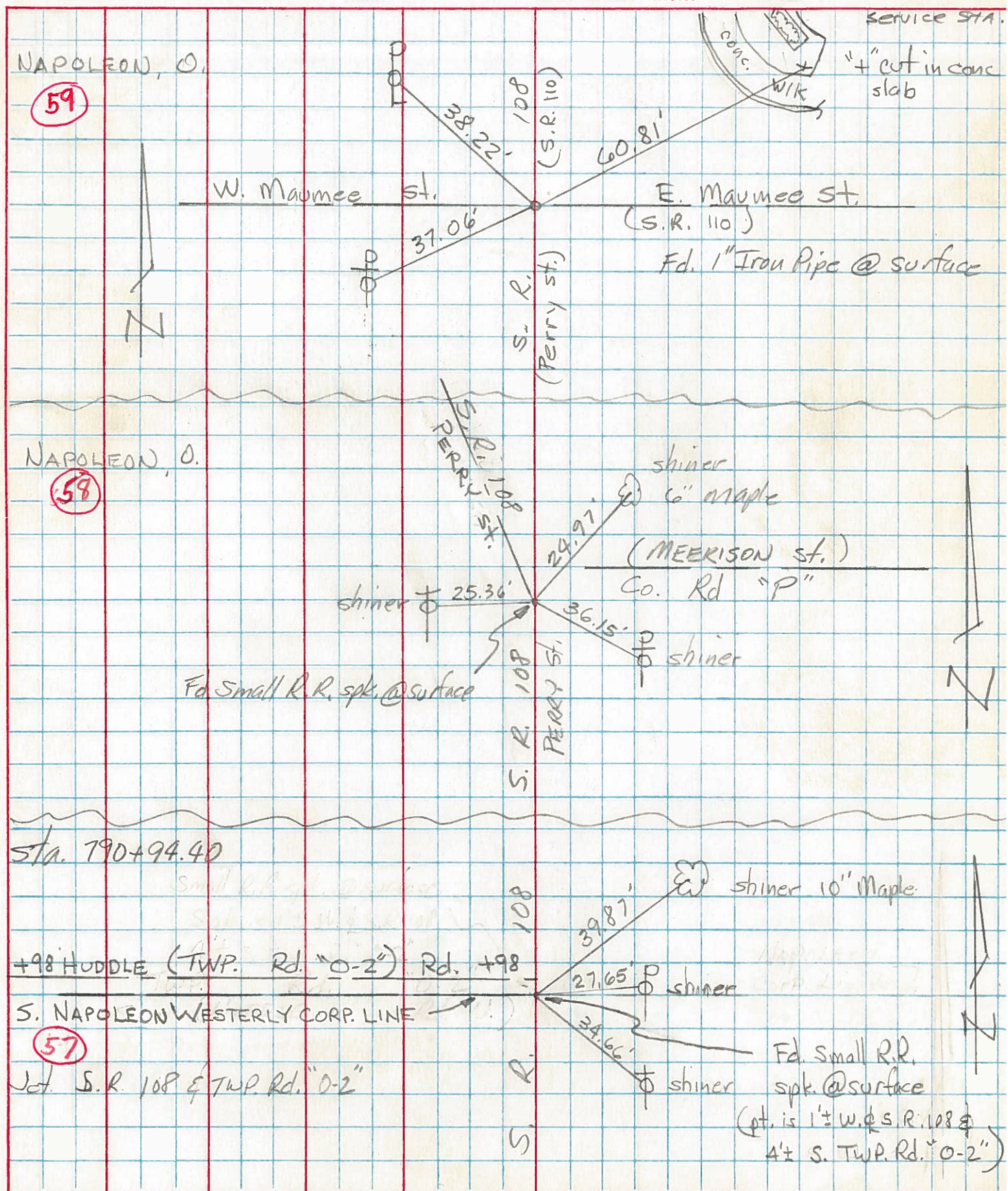
Twp. Rd. 0-2
(NAPOLEON CORP. LINE)



PERSONNEL	TITLE	PERSONNEL	TITLE
Tomsic			
Neuser			
Vanyo			
Granata			

COUNTY HENRY DATE July 12, 19
 S. R. 108 WEATHER _____
 SEC. Napoleon Twp. TEMP. _____

DESCRIPTION _____ LEFT _____ CENTER LINE _____ RIGHT _____ JOB NO. _____



PERSONNEL TITLE PERSONNEL TITLE

COUNTY HENRY DATE 11 JUNE 71

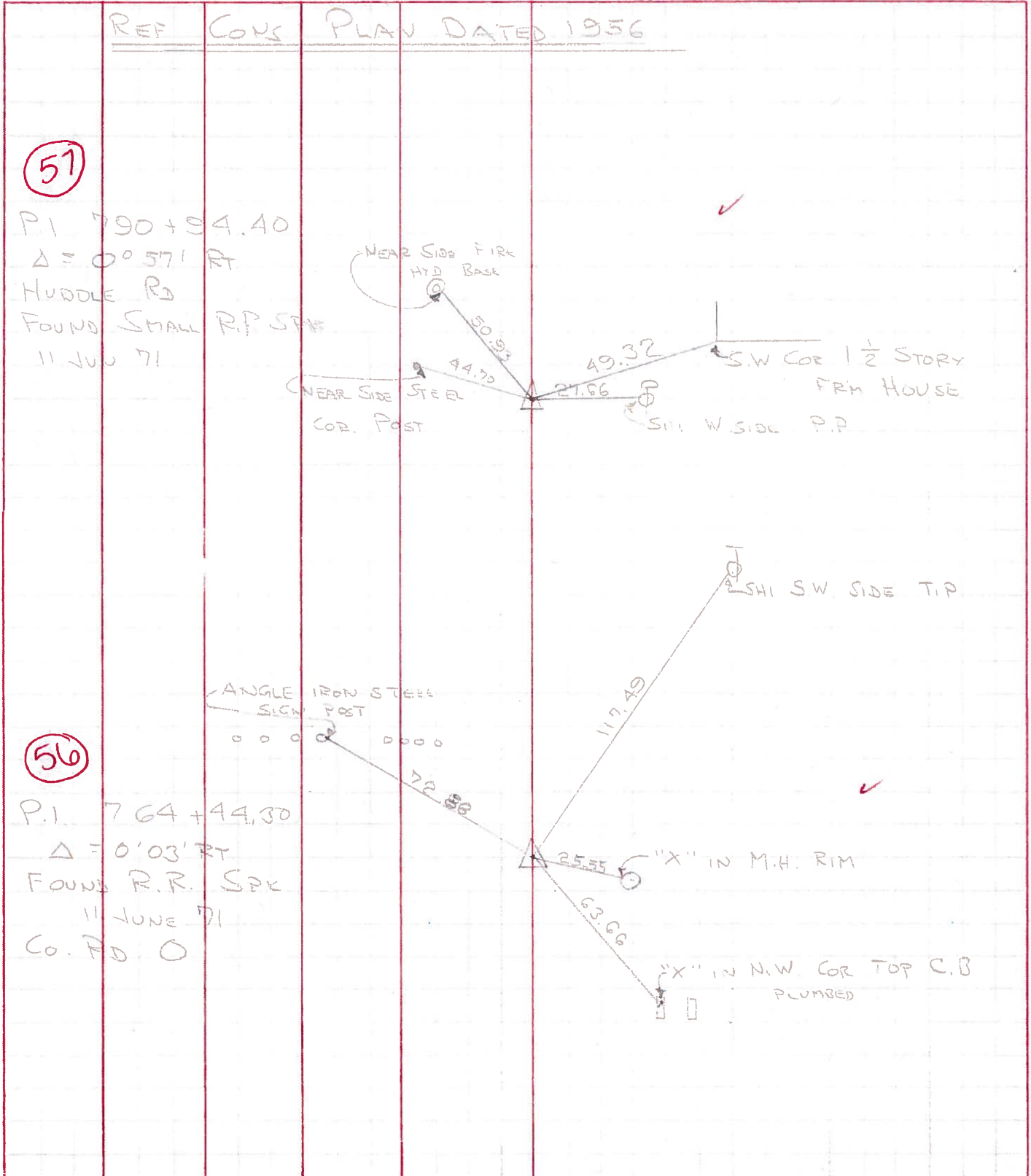
FRICKEN
RAV
SHAW

S. R. # 108 (119?) WEATHER CLOUDY RAIN

SEC. CORD 1 TO MAP TEMP. 75°

DESCRIPTION RE WITNESS TO CONTROL POINTS JOB NO. _____

LEFT CENTER LINE RIGHT



PERSONNEL TITLE PERSONNEL TITLE

Beach
Armbruster
Knappe

COUNTY Henry

DATE 18 Aug '58
10-24-60

S. R. 108

WEATHER

SEC. Napoleon

TEMP.

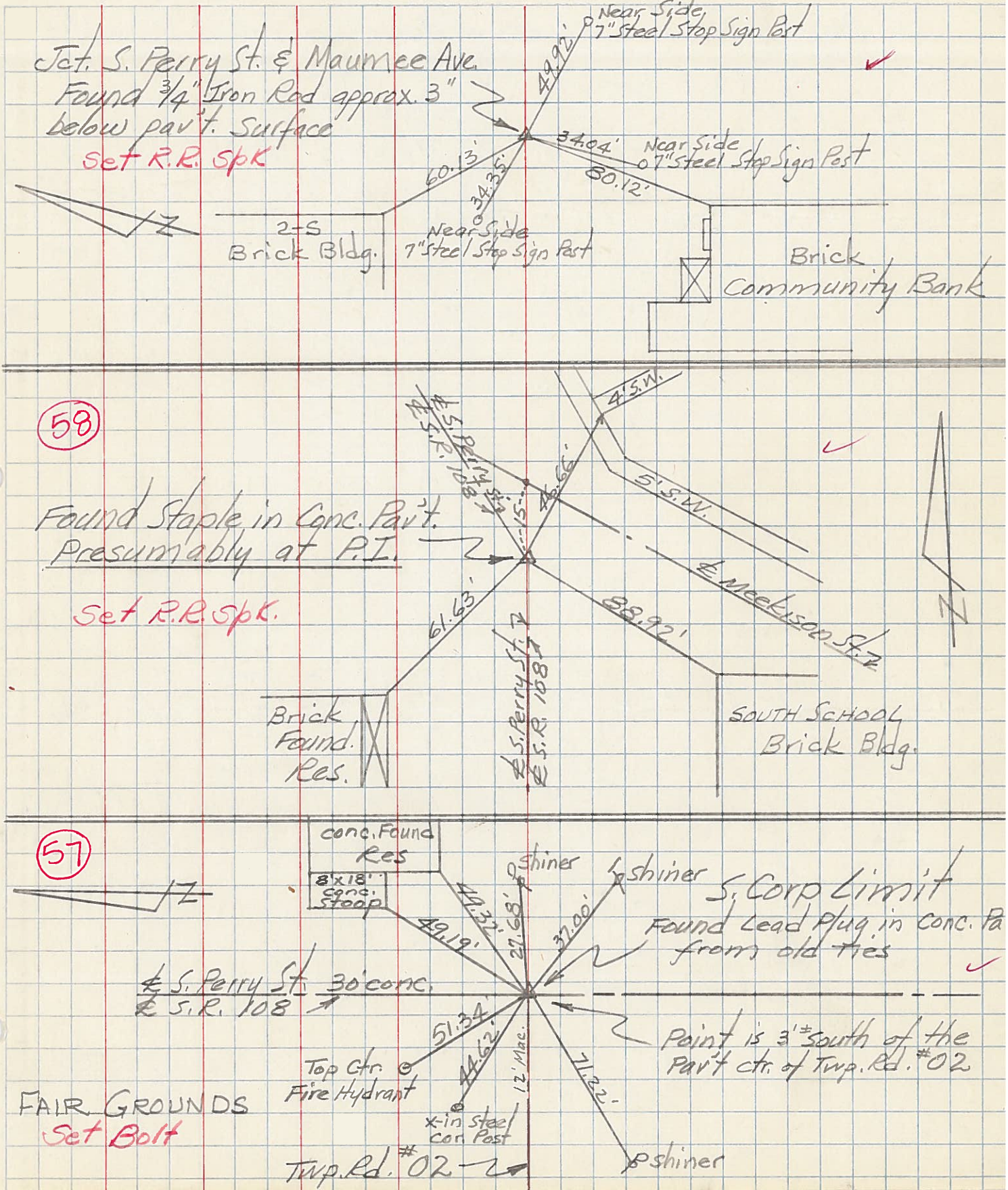
DESCRIPTION CONTROL POINTS

LEFT

CENTER LINE

RIGHT

JOB NO.



PERSONNEL	TITLE	PERSONNEL	TITLE	COUNTY	DATE	WEATHER	TEMP.
Ruffer				Henry	11-26-56	Fair	35
Knappe				S. R. 108			
Holt				SEC.			
Young							

DESCRIPTION LEFT CENTER LINE RIGHT JOB NO.

55

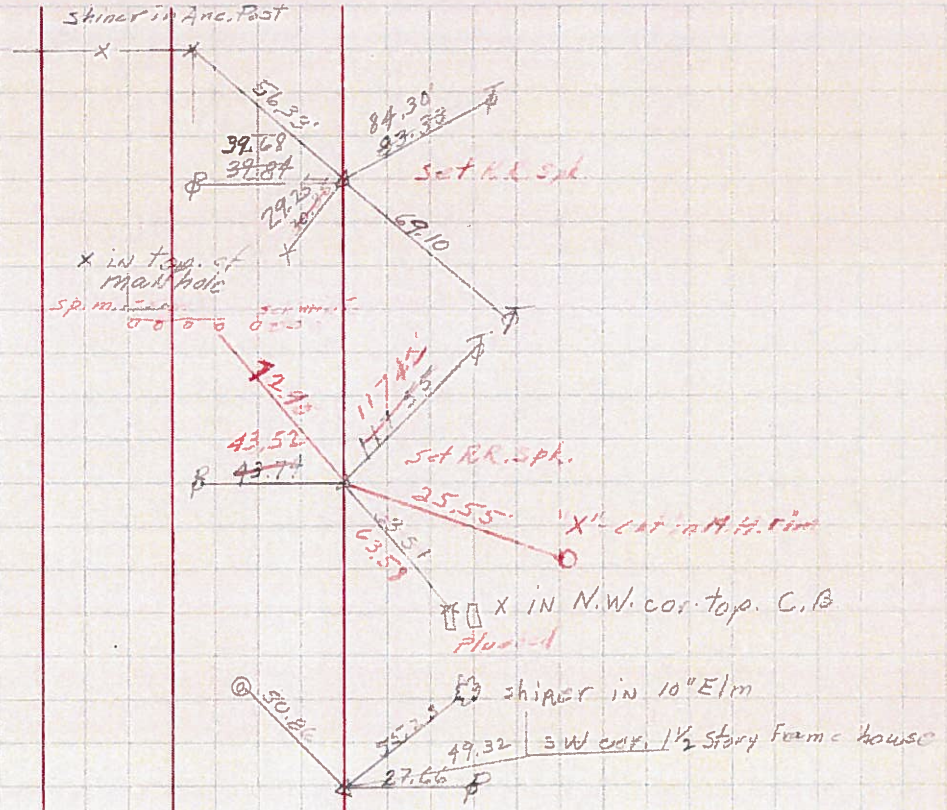
737 + 87.09

56

764 + 47.30

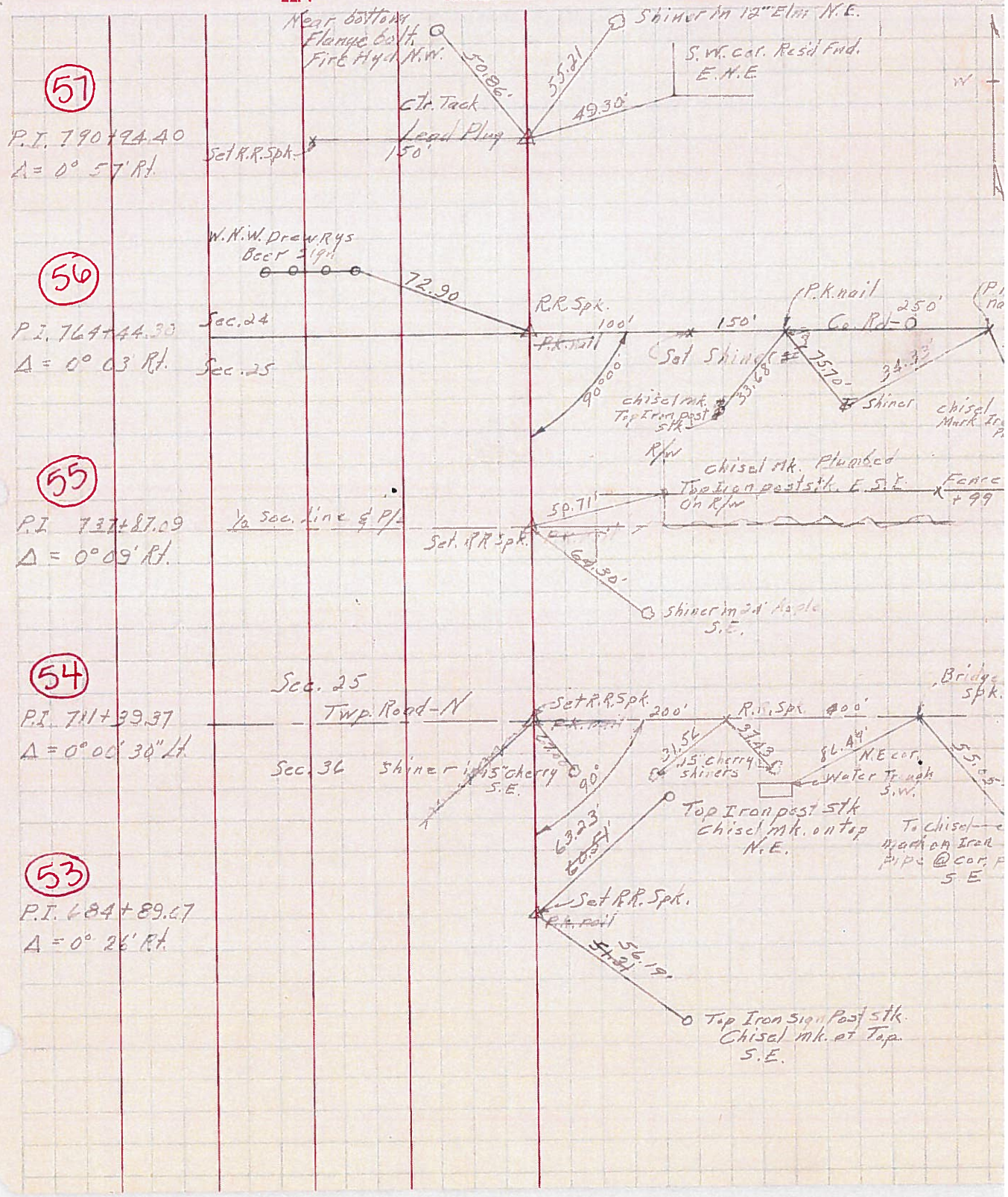
57

790 + 94.90



PERSONNEL	TITLE	PERSONNEL	TITLE	COUNTY	Henry	DATE	9-7-56
Jamison		Wilkinson		S. R.	108	WEATHER	Clear
Burnside		Phillips		SEC.		TEMP.	70°
Bearcott							
Smith							

DESCRIPTION Witness Control Pts JOB NO. _____



PERSONNEL TITLE PERSONNEL TITLE

COUNTY Henry

DATE 4-13-55

Louys

Ruffer

Damm

Duda

S. R. 108

WEATHER Fair

SEC.

TEMP. 65°

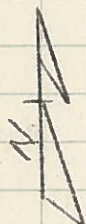
DESCRIPTION

LEFT

CENTER LINE

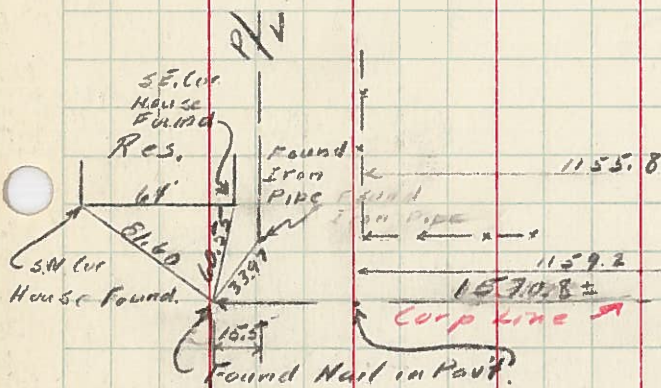
RIGHT

JOB NO.



Napoleon Twp.
Sec #24
(Napoleon City)

Harrison
Sec #19



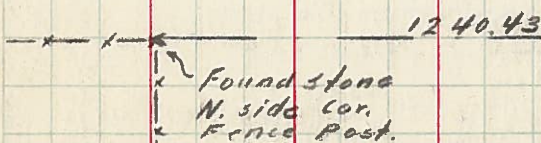
Sta 790194.40
Lead Pipe in Pavt (Found)
 $\Delta = 0^{\circ} 57' \text{ Rt}$

Old Cor Posts

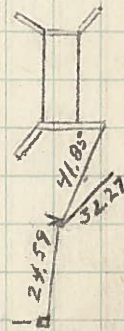
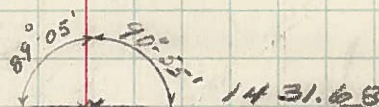
Corp Line

Napoleon Twp
Sec #24

Harrison
Sec #19



Sta 704+4430
PK Nail in Pavt (Establ. shed)
 $\Delta = 0^{\circ} 03' \text{ Rt}$



PERSONNEL TITLE PERSONNEL TITLE

Hoover
Latta
Duda

COUNTY He

DATE 2-17-55

S. R. 108

WEATHER

SEC.

TEMP.

DESCRIPTION

P.I.

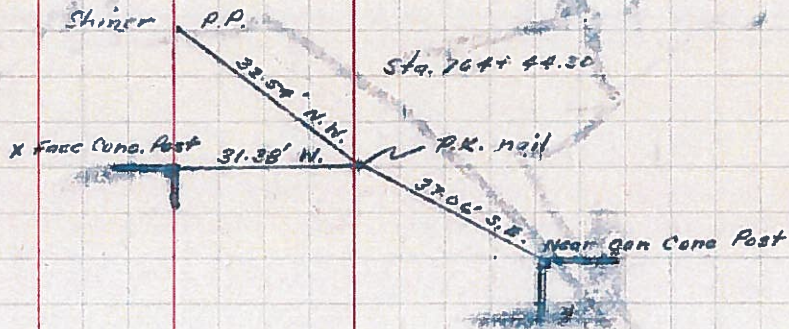
LEFT

CENTER LINE

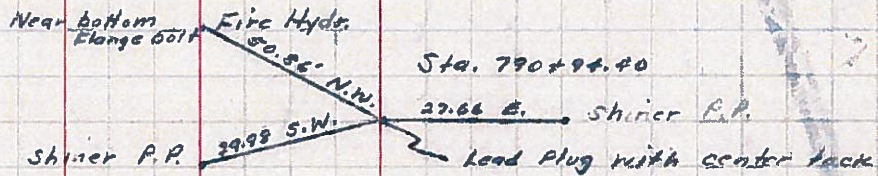
RIGHT

JOB NO.

56



51



PERSONNEL	TITLE	PERSONNEL	TITLE	COUNTY	DATE
Silvester		copy (E.C.H.)		Henry	
				S. R. #108	WEATHER
				SEC.	TEMP.
DESCRIPTION	S. Corp. line Napoleon 790+94.4			JOB NO.	02159
	LEFT	CENTER LINE	RIGHT		

