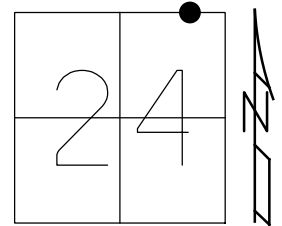


O.D.O.T. DISTRICT 2 SURVEY OFFICE (USE ONLY)

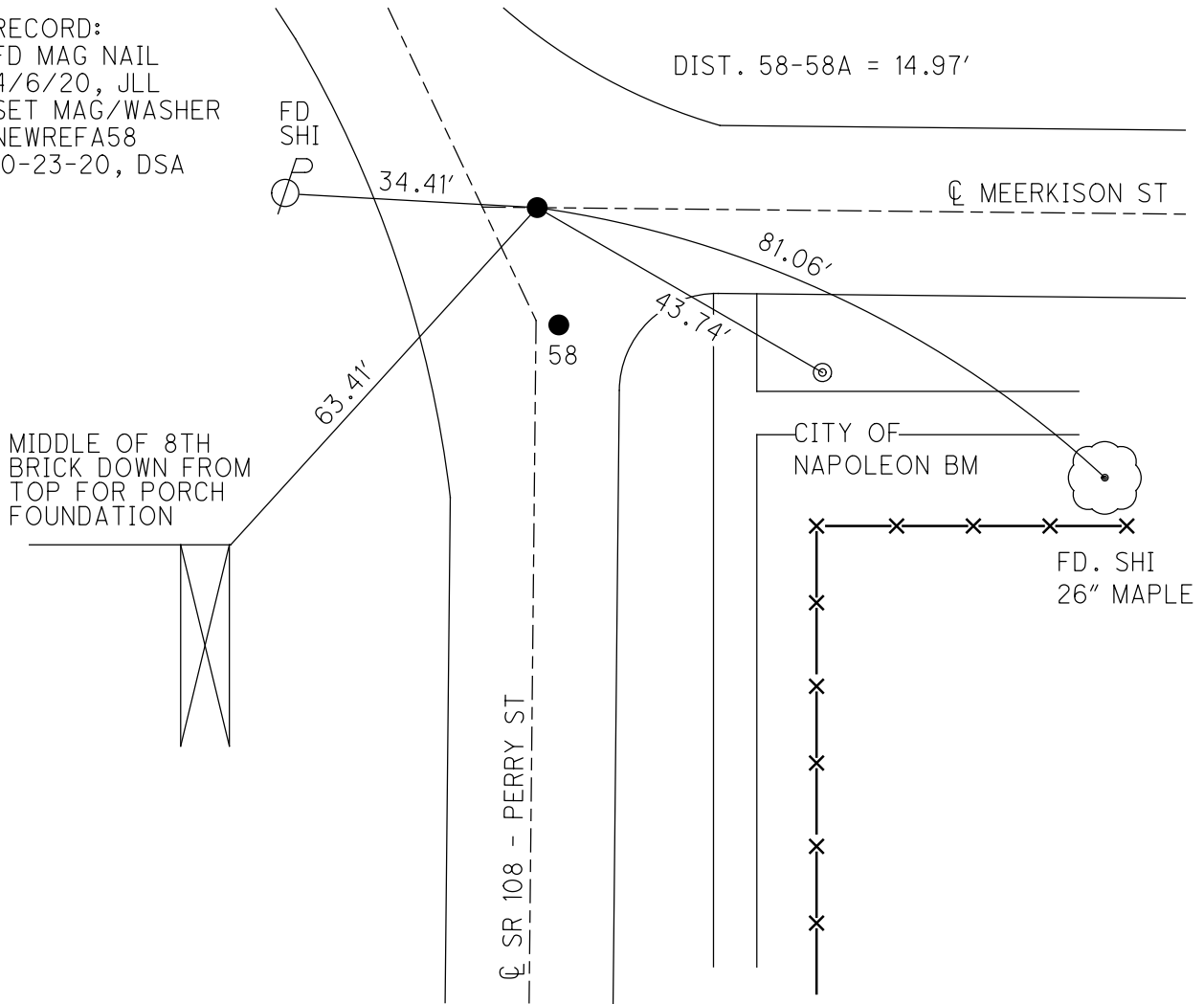
PERSONNEL _____ REFERENCE NO. 58 A SHEET 45 OF 48
 NOTES BALBAUGH DATE 4/6/20 ROUTE SR 108
 H.C. LEU WEATHER SUNNY COUNTY HENRY
 R.C. O'DONNELL TEMP. 57° TOWNSHIP NAPOLEON
 SECTION 24
 DWG BY LEU PID 94319 T 5 N R 6 E

TYPE MONUMENT MAG NAIL
 ON SURFACE - ~~BELOW~~ ON _____
 OFFSET \perp PAVEMENT _____ - _____ \perp : RT
 _____ TO _____ EDGE PAVEMENT
 STATION: 817+30.69



HORZ. DATUM: NAD83 (2011) GEOID: 2012A
 GRID: NORTHING: 630177.925 EASTING: 1523793.417

RECORD:
 FD MAG NAIL
 4/6/20, JLL
 SET MAG/WASHER
 NEWREFA58
 10-23-20, DSA



PERSONNEL TITLE PERSONNEL TITLE

Louys
Ruffer
Daum
Duda

COUNTY Henry DATE 4-13-55
S. R. 108 WEATHER Fair
SEC. TEMP. 65°

DESCRIPTION LEFT CENTER LINE RIGHT JOB NO.

