

O.D.O.T. DISTRICT 2 SURVEY OFFICE (USE ONLY)

PERSONNEL

REFERENCE NO. 59

SHEET 46 OF 48

NOTES CURTIS  
 H.C. CANTERBURY  
 R.C. CORDES  
HERMILLER

DATE 4/18/94  
 WEATHER CLOUDY  
 TEMP. 60°

ROUTE SR 108  
 COUNTY HENRY  
 TOWNSHIP NAPOLEON  
 SECTION 13  
 T 5 N R 6 E

DWG BY MILLER PID 94319

TYPE MONUMENT SM.R.R.SPIKE

ON SURFACE - ~~BELOW~~ ON

OFFSET Q PAVEMENT ON LT : RT

- TO - EDGE PAVEMENT

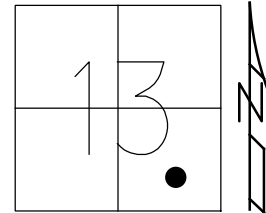
STATION: 821+02

HORZ.DATUM: NAD83 (2011)

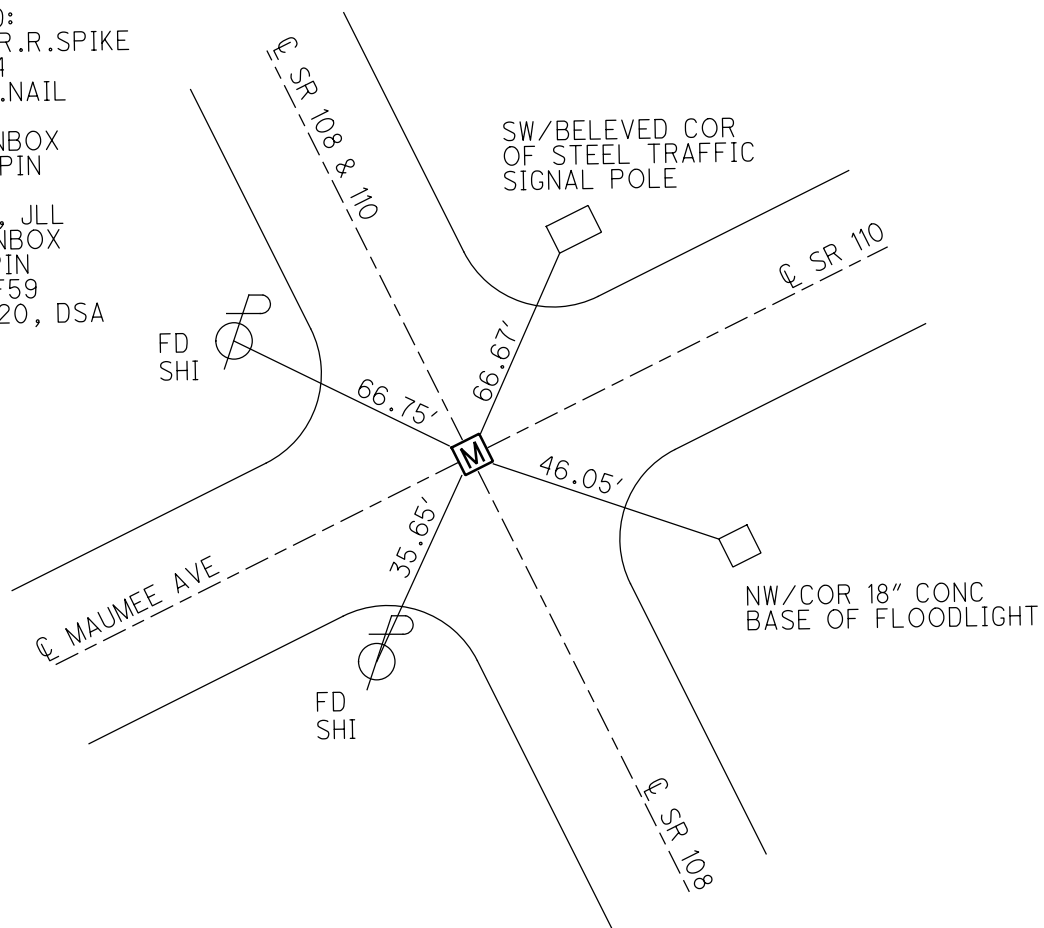
GEOID: 2012A

GRID: NORTHING: 630535.809

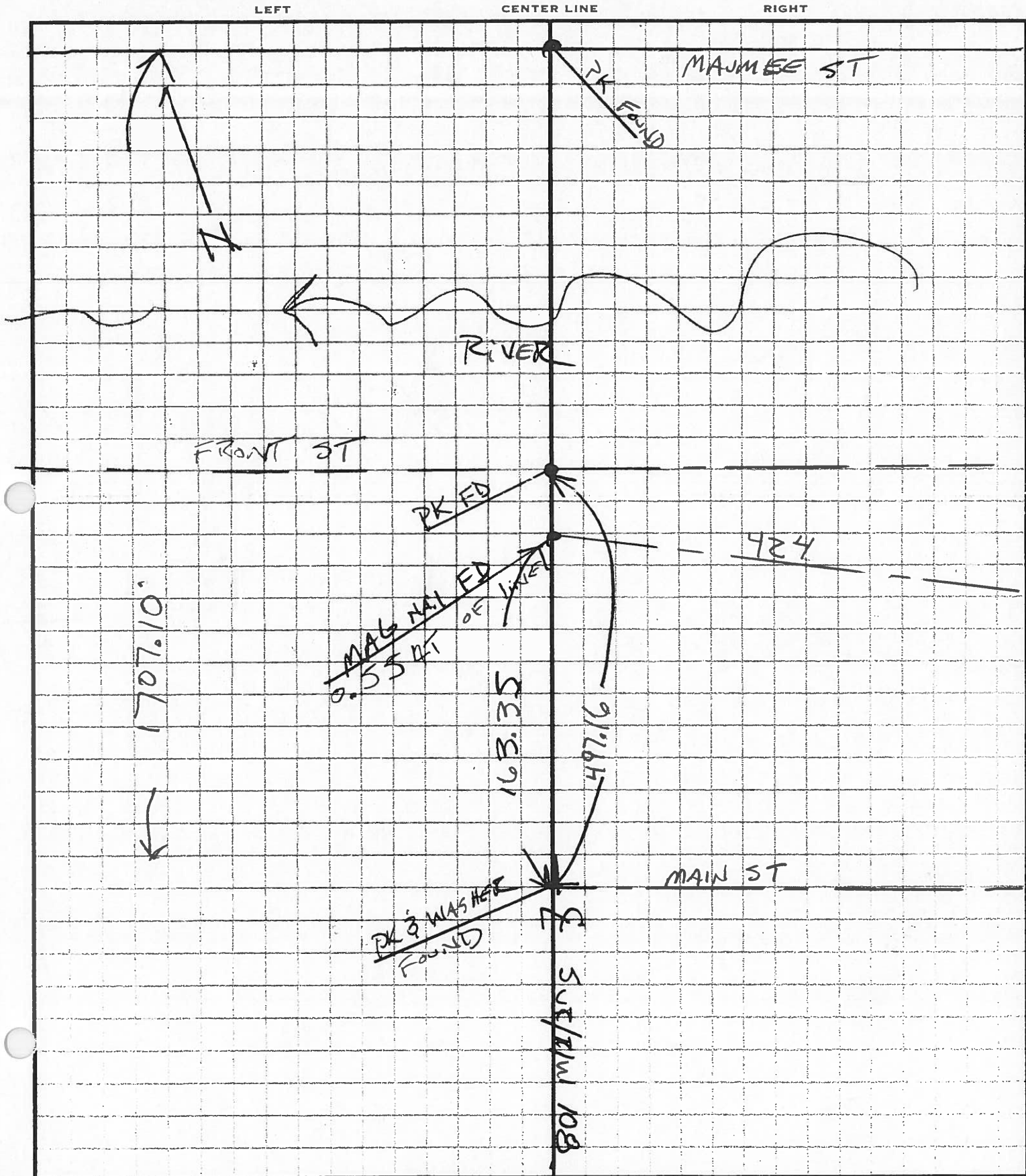
EASTING: 1523618.861



RECORD:  
 FD SM.R.R.SPIKE  
 4-18-94  
 FD P.K.NAIL  
 8-2-94  
 FD MONBOX  
 W/ 1" IPIN  
 REF59  
 11-7-18, JLL  
 FD MONBOX  
 W/1" IPIN  
 NEWREF59  
 10-23-20, DSA



PERSONNEL	TITLE	PERSONNEL	TITLE	COUNTY	DATE
HOMAN	⊕			HEN	1-14-02
CORDES	T W			S.R.	108
				SEC.	15.61
DESCRIPTION				ESTABLISH & R/W AND SUR. OF SR 108	JOB NO.
					423290



# O.D.O.T. DISTRICT 2 SURVEY OFFICE

PERSONNEL

REFERENCE NO. 59

SHEET 1 OF 6

NOTES D. CURTIS

H.C. CANTERBURY

DATE 4-18-94

ROUTE S.R. 108

R.C. CORDES

WEATHER Cloudy

COUNTY HENRY

HERMILLER

TEMP. 160

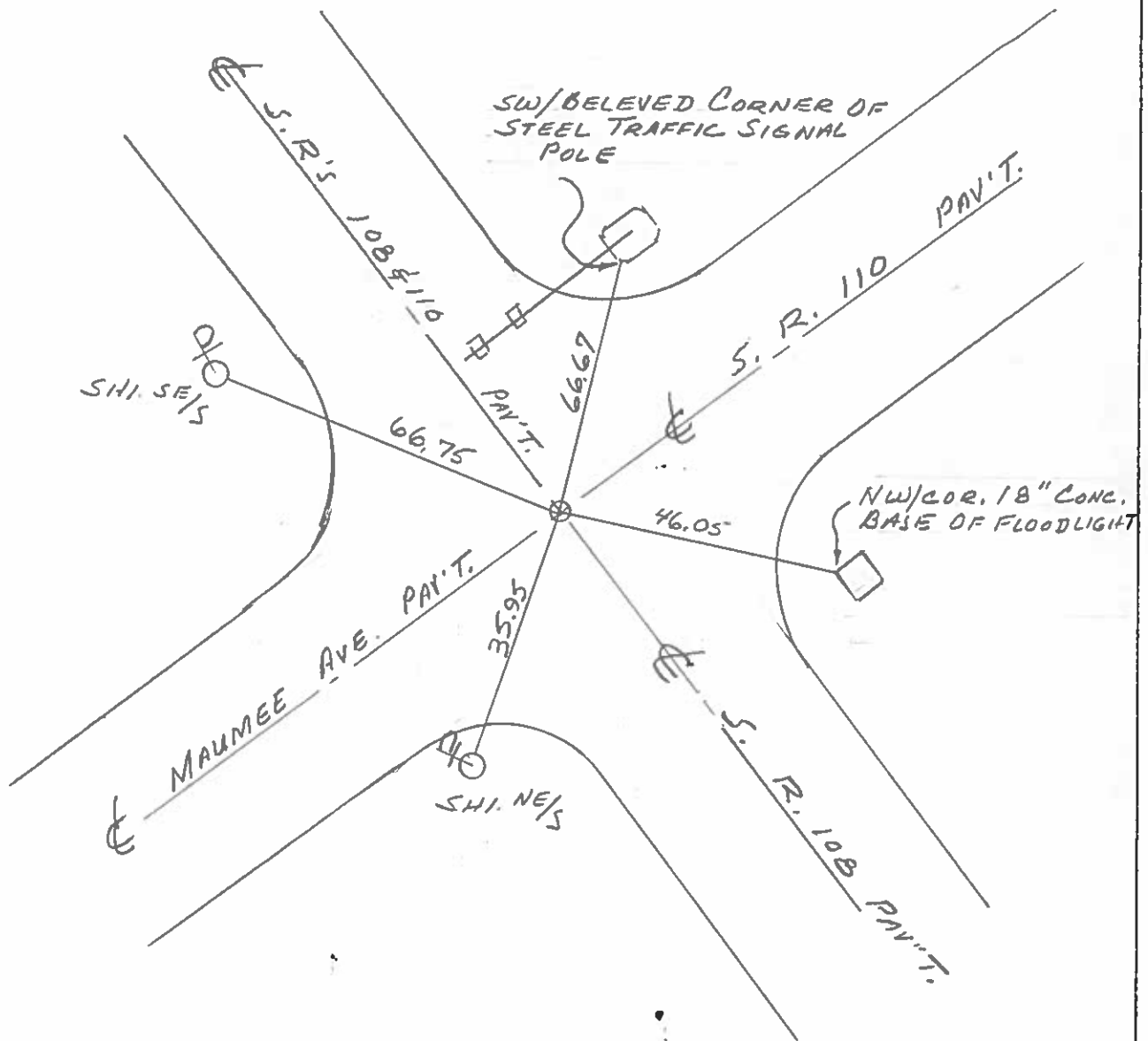
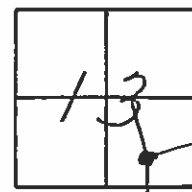
TOWNSHIP NAPOLEON

SECTION 13

Fd P.K. NAK 8-2-94

T 5 N R 6 E

TYPE MONUMENT S.M. R.R. SPK.  
 ON SURFACE - BELOW ON SURFACE  
 LEFT- & PAV'T. - RIGHT & BOTH PAV'T.  
 TO EDGE PAVEMENT  
 S.L.M. 821+02



# O.D.O.T. DISTRICT 2 SURVEY OFFICE

PERSONNEL

REFERENCE NO. 59

SHEET 10 OF 33

NOTES HOFFMAN

H.C. BARNHISEL

DATE 3-25-88

ROUTE 108

R.C. LOSHRKE

WEATHER P CLEAR

COUNTY HENRY

REED

TEMP. 60°

TOWNSHIP NADOLESON

SECTION 13

TS N R 6 E

TYPE MONUMENT 3/4" I.P.D.E

Set sm L

ON SURFACE - BELOW 2"

RR SP

~~LEFT~~ - & PAV'T. - RIGHT 1.0' of SR108

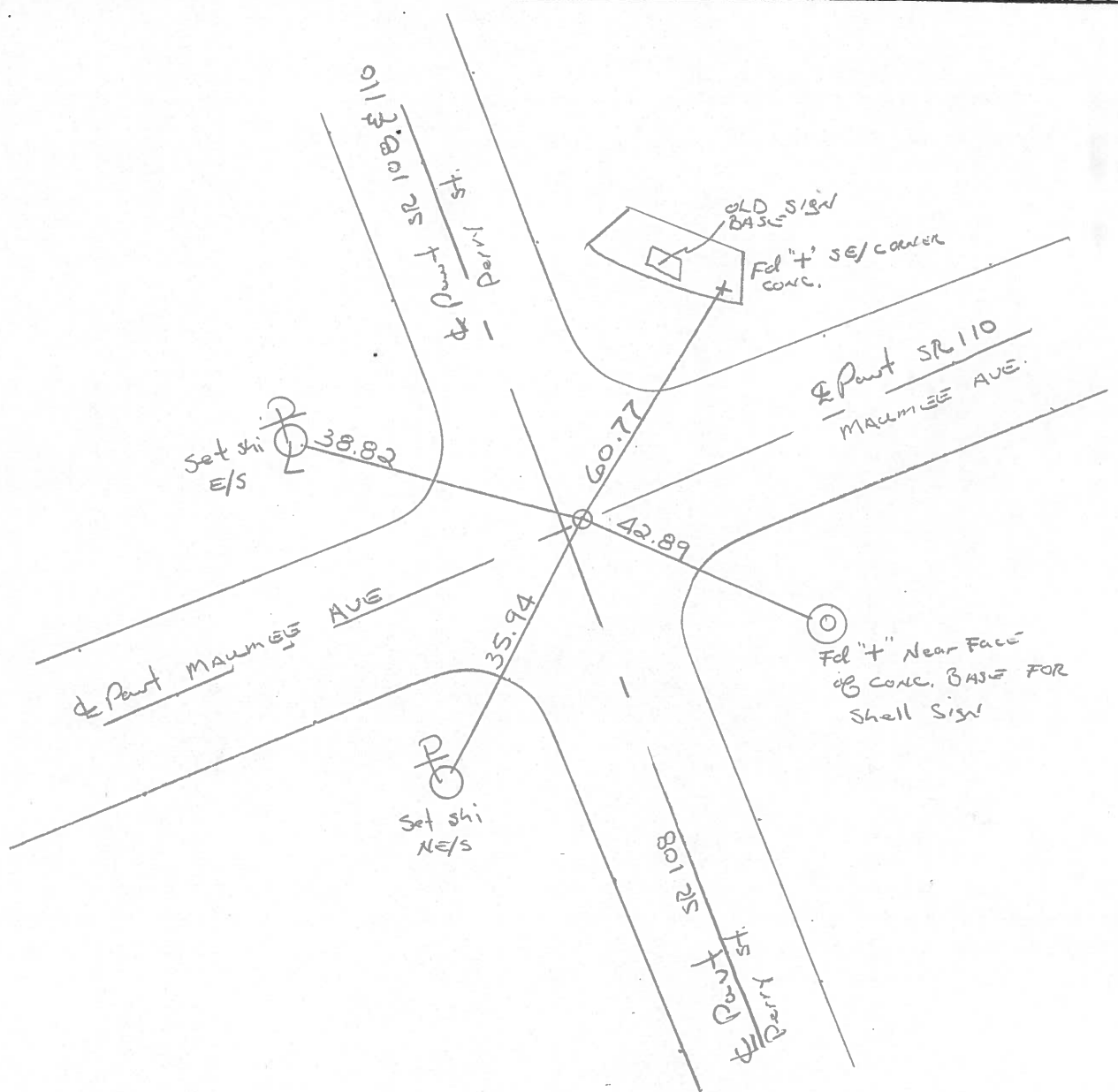
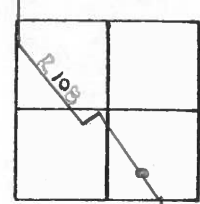
5-29-88

su

TO EDGE PAVEMENT

oil & Paint  
SR110 EAST

S.L.M. 821+02



O.D.O.T. DISTRICT 2 SURVEY OFFICE

Sht. 10 of 19  
S.R. 108

County HENRY

Date 8-26-77

Township NAPOLEON

Weather CLEAR

Section 13

Temp. +75°

T5N, R6E

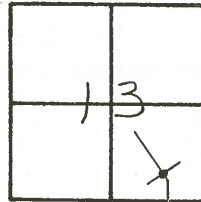
Personnel BURNSIDE

SMITH

BOWERS

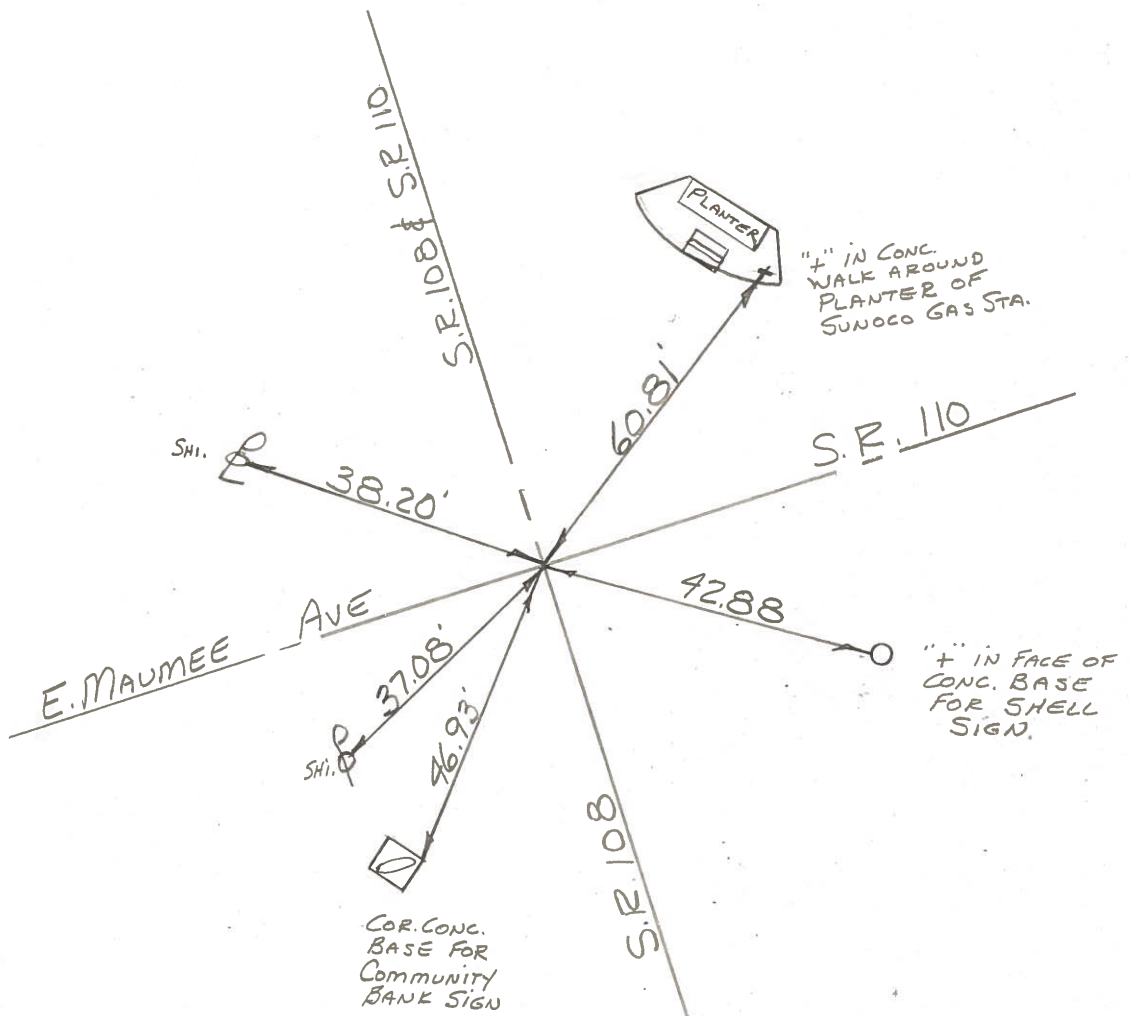
KNAPE

MEAD



FD. 3/4" I. PIPE 1/2" DEEP

#59



PERSONNEL TITLE PERSONNEL TITLE COUNTY HENRY DATE July 12, 1974  
 Tomsic \_\_\_\_\_  
 Neuser \_\_\_\_\_  
 Vanyo \_\_\_\_\_  
 Granata \_\_\_\_\_  
 S. R. 108 WEATHER \_\_\_\_\_  
 SEC. Napoleon Twp. TEMP. \_\_\_\_\_

DESCRIPTION LEFT CENTER LINE RIGHT JOB NO.

