

O.D.O.T. DISTRICT 2 SURVEY OFFICE (USE ONLY)

PERSONNEL

REFERENCE NO. 61

SHEET 6 OF 14

NOTES MOSER

DATE 8/2/01

ROUTE SR 108

H.C. CANTERBURY

WEATHER CLEAR

COUNTY HENRY

R.C. MOSER

TEMP. 75°

TOWNSHIP NAPOLEON

SECTION 13

DWG BY NIESE PID _____

T 5 N R 6 E

TYPE MONUMENT LG. SPIKE

ON SURFACE - ~~BELOW~~ ON

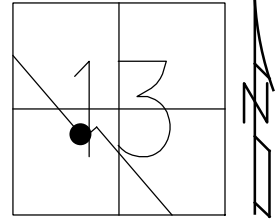
OFFSET \odot PAVEMENT 2.6' ~~LT~~ : RT

21.4' TO RT EDGE PAVEMENT

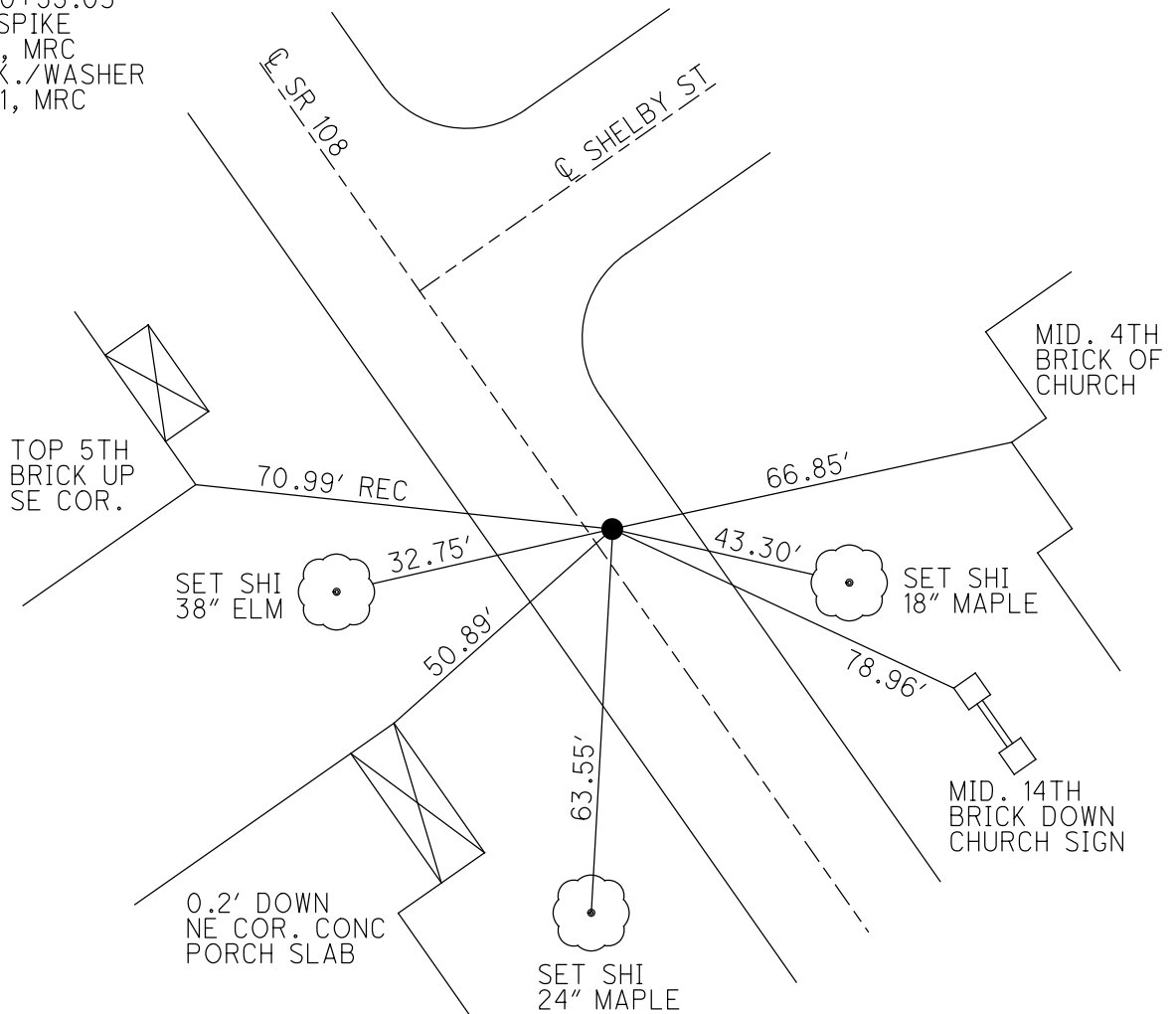
STATION: 851+95

HORZ.DATUM: _____ GEOID: _____

GRID: NORTHING: _____ EASTING: _____



RECORD: P.I.
 STA 850+55.03
 FD LG SPIKE
 8/2/01, MRC
 SET P.K./WASHER
 11/15/01, MRC



O.D.O.T. DISTRICT 2 SURVEY OFFICE

PERSONNEL

REFERENCE NO. 61

SHEET 1 OF 21

NOTES MOSEY

H.C. CANTERBURY

R.C. MOSEY

DATE 8-2-01

WEATHER CLEAR

TEMP. +75°F

ROUTE 108

COUNTY HENRY

TOWNSHIP NAPOLÉON

SECTION 13

T 5 N 6 E

TYPE MONUMENT LA. SPIKE

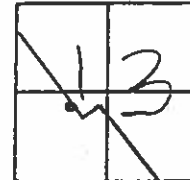
ON SURFACE - ~~BELOW~~ Yes

~~LEFT - PAV~~ T. - RIGHT 2.6 RT.

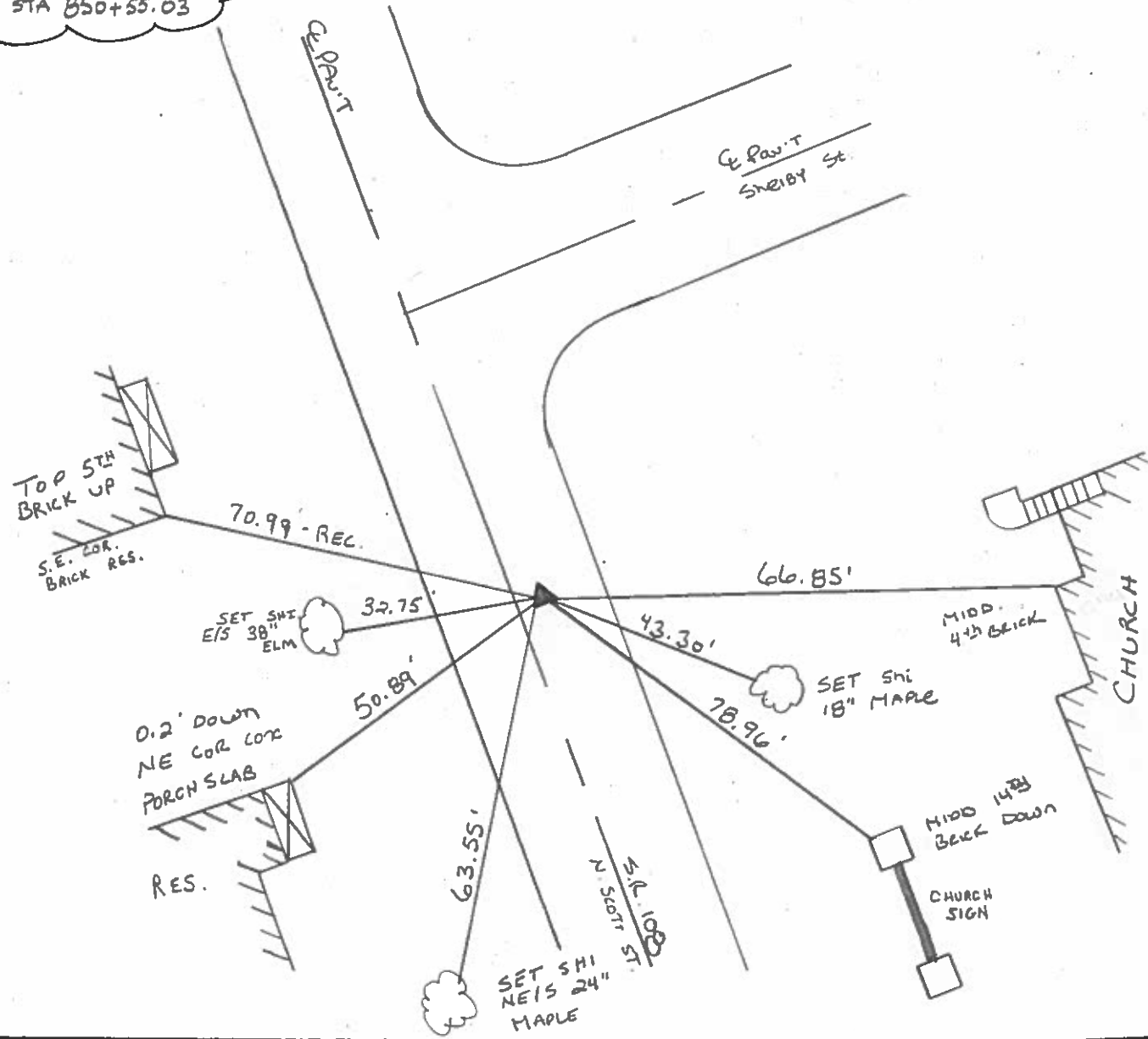
21.4 TO RT. EDGE PAVEMENT

S.L.M. 851 +95

RESET P.K./WASHER
11/15/01
M.R.C.



RECORD:
PI STA 850+55.03



Resurfaced 2001

O.D.O.T. DISTRICT 2 SURVEY OFFICE

PERSONNEL

REFERENCE NO. 61

SHEET 13 OF 33

NOTES HOFFMAN

H.C. BARNAISEK

DATE 3-25-88

ROUTE SR 108

R.C. LOEHRKE

WEATHER P. CLEAR

COUNTY HENRY

REED

TEMP. 60°

TOWNSHIP NAPOLEON

SECTION 13

T.S. NR 6 E

TYPE MONUMENT 1" I. PIPE

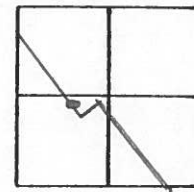
Set SMALL
R.R. SPIKES
5-25-88 SWA

~~ON SURFACE~~ - BELOW 3"

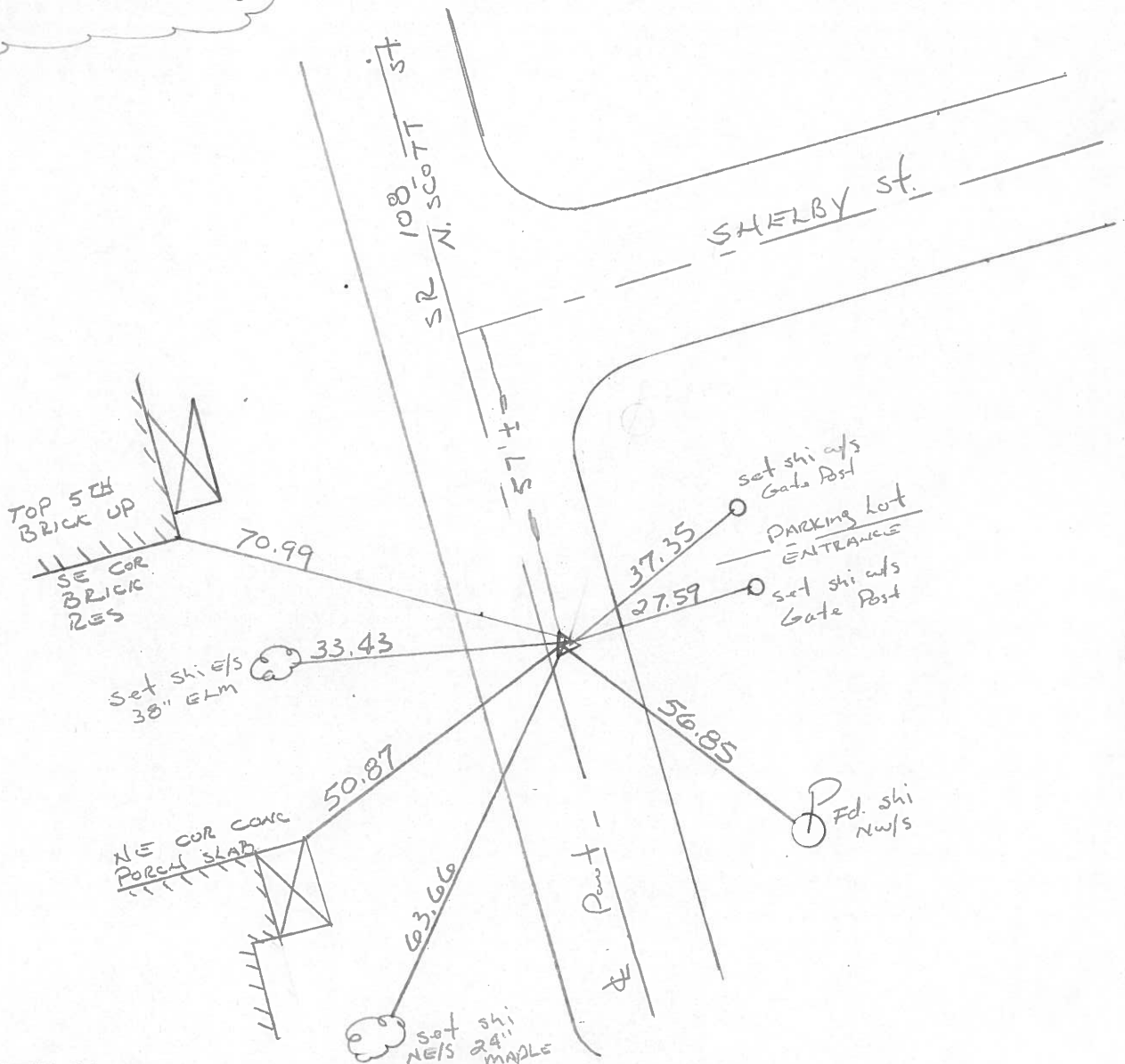
~~LEFT-C~~ PAV'T. - RIGHT 2.5

21.5 TO RT EDGE PAVEMENT

S.L.M. 851+95



Record:
P.I. Sta. 850+55.03



O.D.O.T. DISTRICT 2 SURVEY OFFICE

Sht. 13 of 19
S.R. 108

County HENRY

Date 8-30-77

Township NAPOLEON

Weather CLEAR

Section 13 ?

Temp. +73°

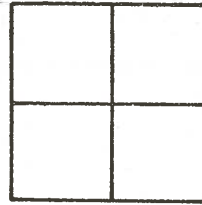
T5N, R6E

Personnel BURNSIDE

SMITH

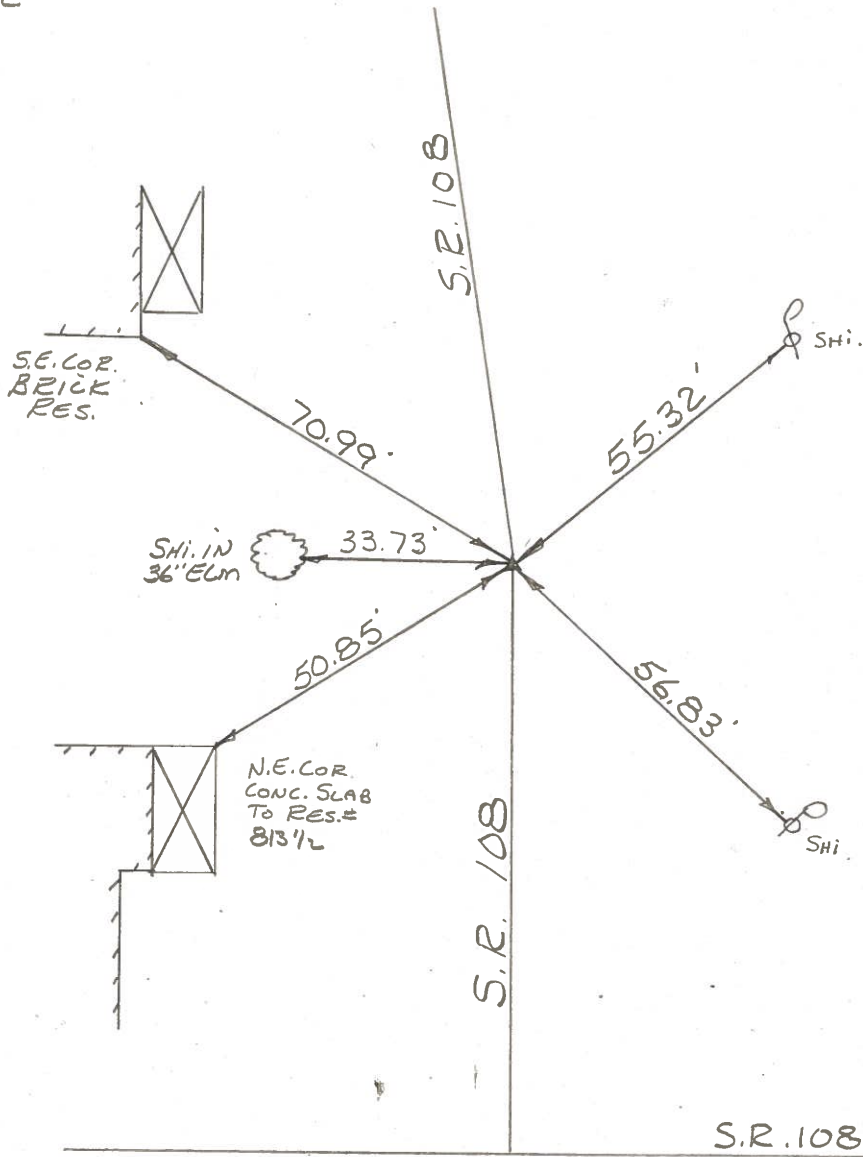
KNAPE

MEAD



#6

P.I. STA. 850+55.03
FD. 1" I. PIPE 3"
BELOW SURFACE



S.R. 108

PERSONNEL TITLE PERSONNEL TITLE
 Tomasic _____
 Neiser _____
 Vanyo _____
 Granata _____

COUNTY HENRY DATE Sept. 17, 1974
 S. R. 108 WEATHER _____
 SEC. NAPOLEON TWP TEMP. _____

DESCRIPTION Napoleon, O. LEFT CENTER LINE RIGHT JOB NO. _____

