

O.D.O.T. DISTRICT 2 SURVEY OFFICE (USE ONLY)

PERSONNEL \_\_\_\_\_

REFERENCE NO. 66 A

SHEET 12 OF 14

NOTES MOSE

DATE 8/2/01

ROUTE SR 108

H.C. CANTERBURY

WEATHER CLEAR

COUNTY HENRY

R.C. MOSE

TEMP. 85°

TOWNSHIP NAPOLEON

SECTION 12

DWG BY NIESE PID \_\_\_\_\_

T 5 N R 6 E

TYPE MONUMENT MONBOX W/ IPIN

ON SURFACE - ~~BELOW~~ ON

OFFSET  $\bar{C}$  PAVEMENT ON LT : RT

20.0' TO RT ~~EDGE PAVEMENT~~ FACE OF CURB

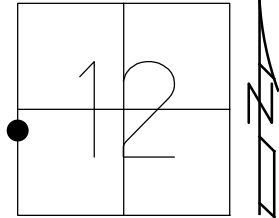
STATION: 904+07

HORZ. DATUM: \_\_\_\_\_

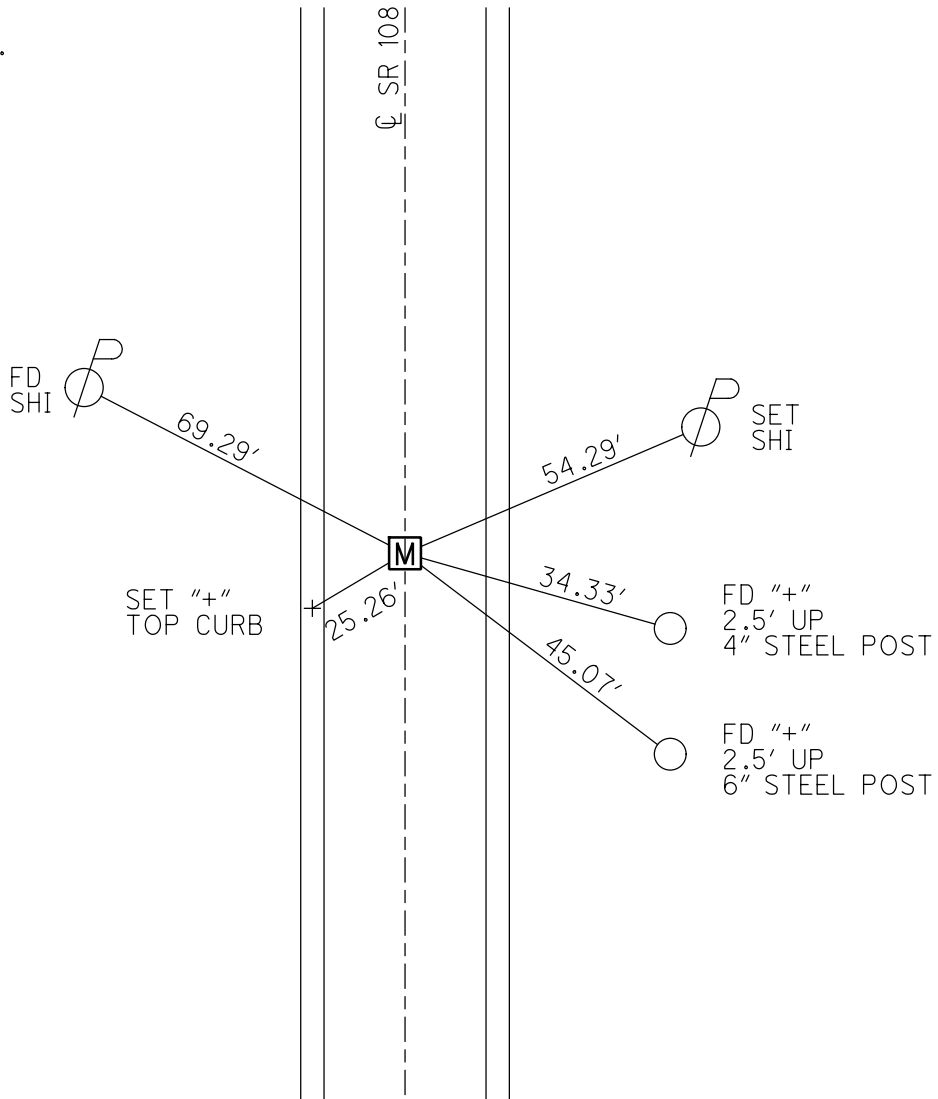
GEOID: \_\_\_\_\_

GRID: NORTHING: \_\_\_\_\_

EASTING: \_\_\_\_\_



RECORD: P.O.T.  
STA 904+75.14  
FD MONBOX  
W/ IPIN  
8/2/01, MRC



# O.D.O.T. DISTRICT 2 SURVEY OFFICE

PERSONNEL

REFERENCE NO. 66-A

SHEET 7 OF 21

NOTES MOSEK

H.C. CANTERBURY

R.C. MOSEK

DATE 8-2-01

WEATHER CLEAR

TEMP. +85°F

ROUTE 108

COUNTY HENRY

TOWNSHIP NAPOLEON

SECTION 11

T 5 N R 6 E

I PIN

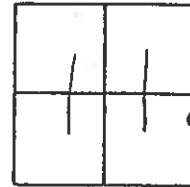
TYPE MONUMENT Mon Box - OPENED LIO

ON SURFACE - ~~BELOW~~ ON

~~LEFT - & PAV'T. - RIGHT~~ CL

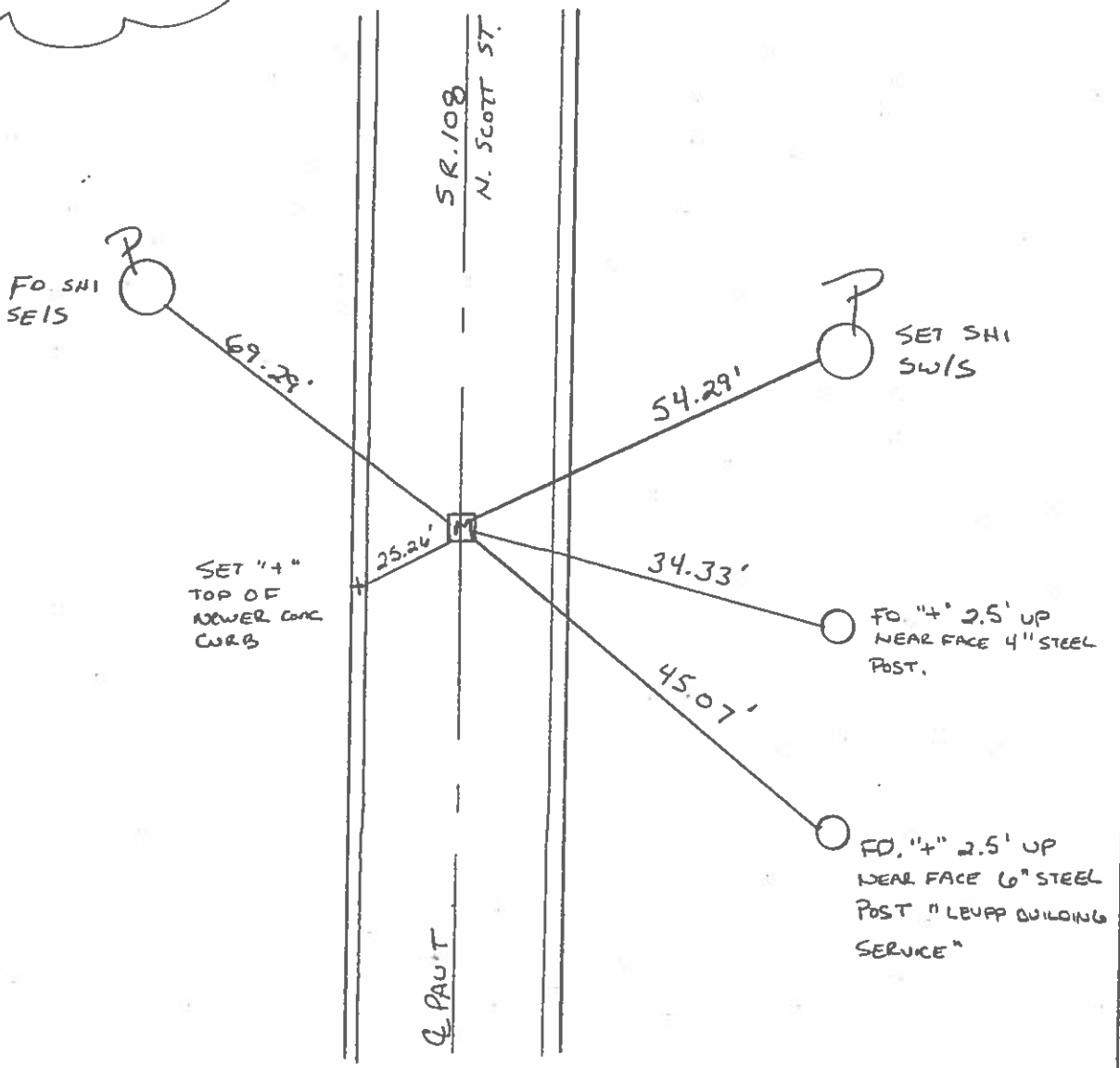
20.0 TO RT. EDGE PAVEMENT FACE OF CURB

S.L.M. 904+07



RECORD:

POT STA: 904+75.14



# O.D.O.T. DISTRICT 2 SURVEY OFFICE

PERSONNEL

REFERENCE NO. 67

SHEET 19 OF 33

NOTES HOFFMAN

H.C. BARNHISEL

R.C. LOSHAKS

DATE 4-8-88

WEATHER CLEAR

TEMP. 58°

ROUTE SR 108

COUNTY HENRY

TOWNSHIP Napoleon

SECTION 11

T5 N R 6 E

TYPE MONUMENT Boat spikes

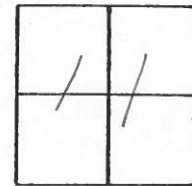
~~ON SURFACE~~ - BELOW 1"

~~LEFT - & PAV'T. - RIGHT~~ YES

14.1 TO RT EDGE PAVEMENT

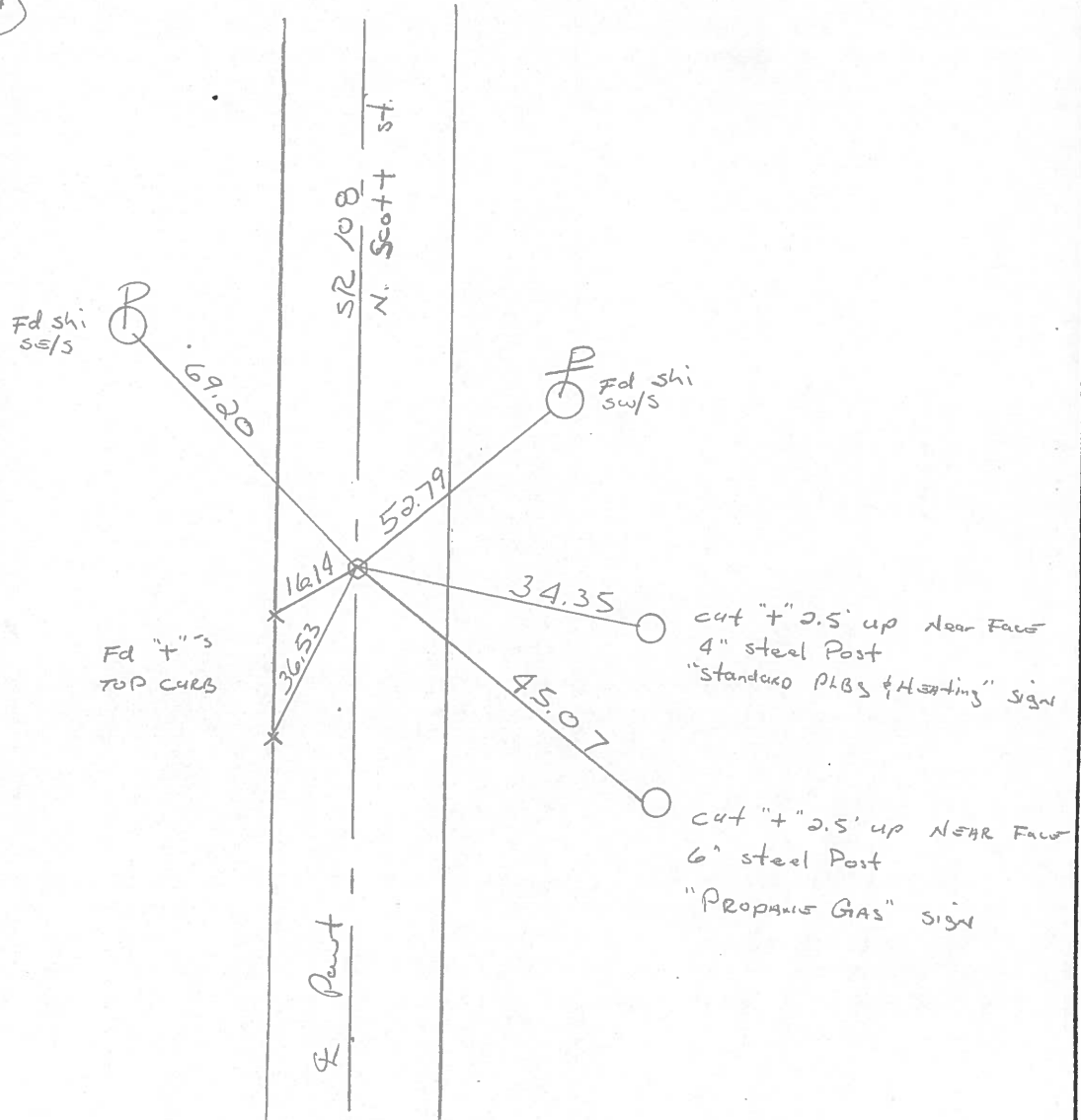
S.L.M. 904+07

Set small  
R.R. SPIKE  
5-25-88 SWK



Record:

P.O.T. 904+75.14



# O.D.O.T. DISTRICT 2 SURVEY OFFICE

PERSONNEL \_\_\_\_\_

REFERENCE NO. \_\_\_\_\_

SHEET 20 OF 33

NOTES Hoffman

H.C. BARNHISEL

DATE 4-18-88

ROUTE SR 108

R.C. LOENKE

WEATHER P. CLEAR

COUNTY HENRY

REED

TEMP. 43°

TOWNSHIP NAPOLEON

SECTION 11

T.S. N R 6 E

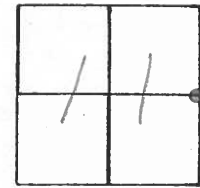
TYPE MONUMENT Monument + Box

ON SURFACE - BELOW YES

LEFT - & PAV'T. - RIGHT YES

14.2 TO RT EDGE PAVEMENT

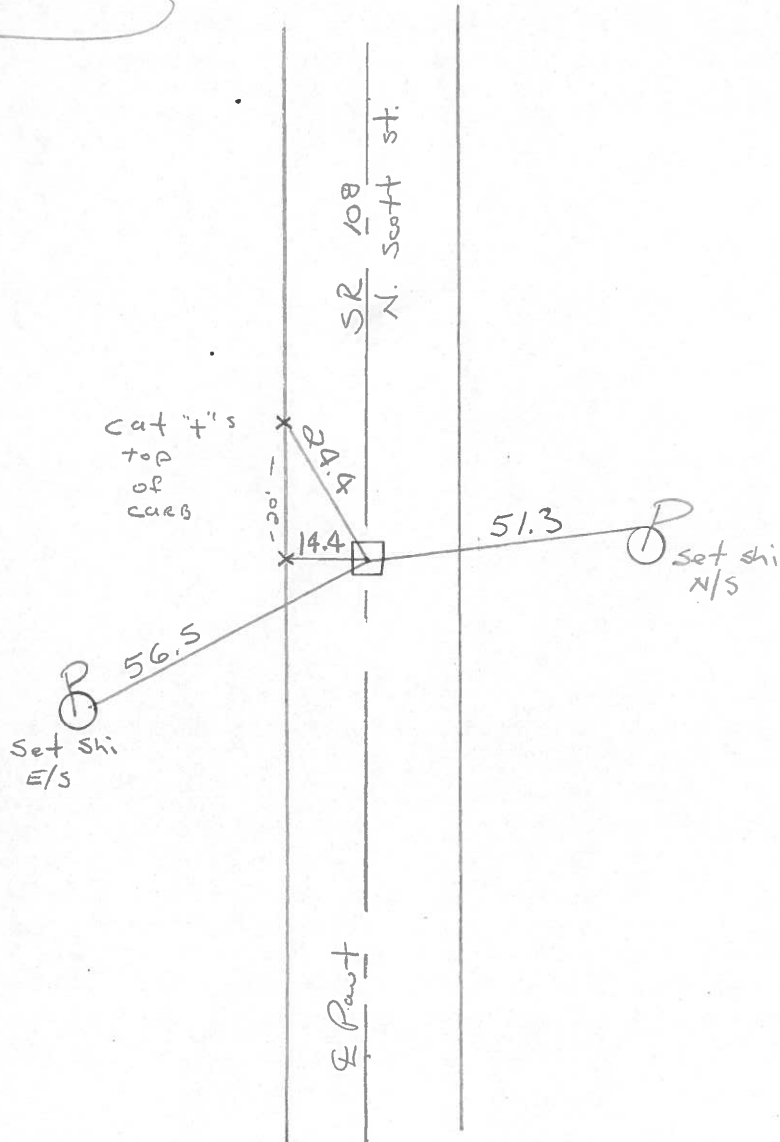
S.L.M. 909 + 06



1966 PLAN = 909 + 74.40

DID NOT OPEN LID.

(67)



O.D.O.T. DISTRICT 2 SURVEY OFFICE

Sht. 19 of 19  
S.R. 108

County HENRY

Date 8-30-77

Township NAPOLEON

Weather CLEAR

Section 11

Temp. +85°

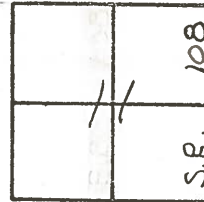
T5N, R6E

Personnel BURNSIDE

SMITH

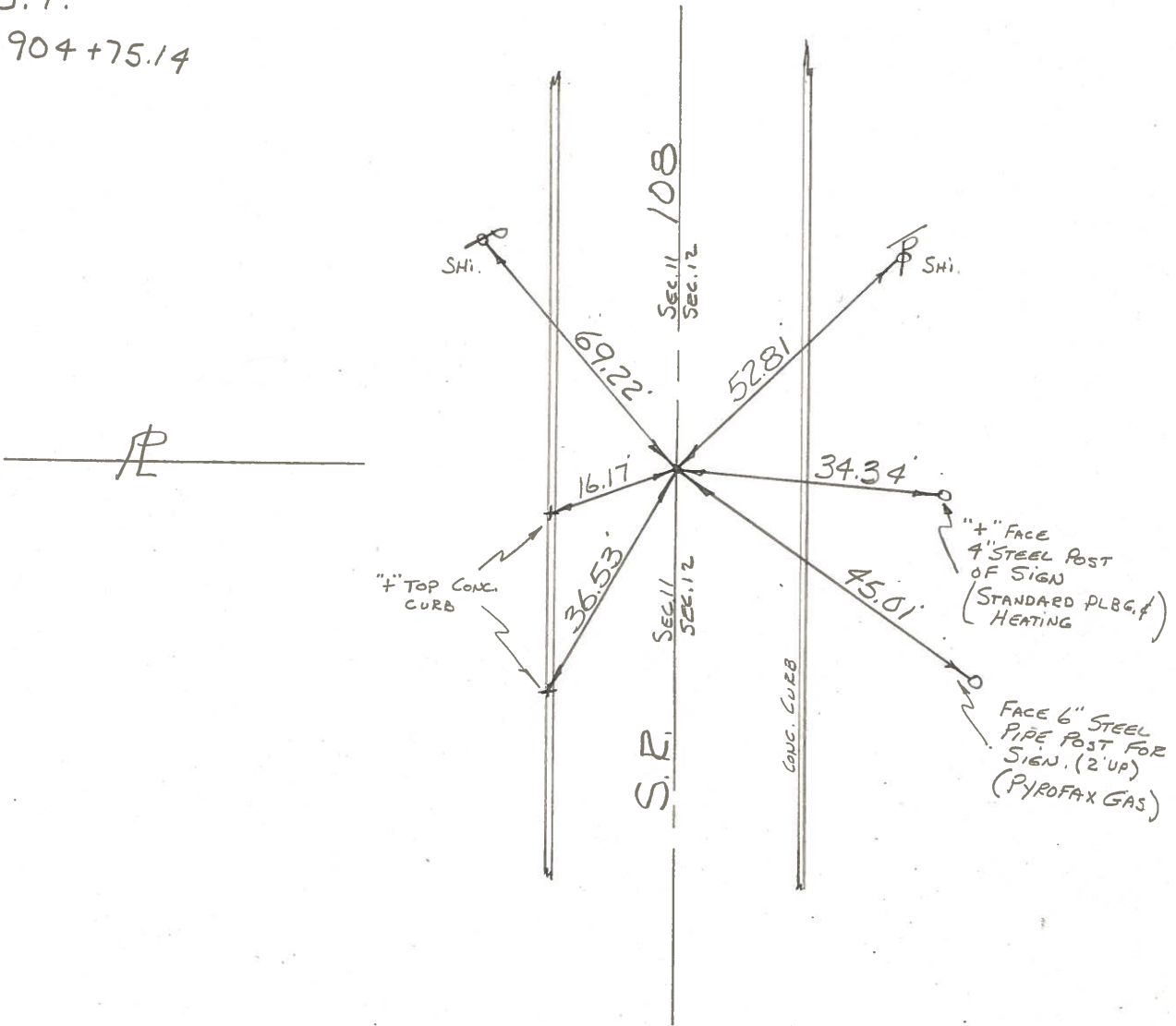
KNAPE

MEAD



Fd. P.K. Nail @  
SURFACE  
P.O.T.  
STA. 904 + 75.14

#6



PERSONNEL	TITLE	PERSONNEL	TITLE	COUNTY	DATE	WEATHER	TEMP.
Tomsic				HENRY	Sept. 18, 1974		
Neuser				S. R. 108			
Vanyo				SEC. NAPOLEON TWP.			
Granata							

DESCRIPTION	LEFT	CENTER LINE	RIGHT	JOB NO.
<p>67</p> <p>P.O.T. sta. 904+75.14 NAPOLEON, O.</p> <p>N. NAPOLEON WESTERLY CORP. LINE</p> <p>Ed. P.K. Nail @ surface</p>			<p>shiner</p> <p>shiner</p> <p>34.32'</p> <p>"x" cut in Near side Steel 4" Sign Pole</p>	

