

O.D.O.T. DISTRICT 2 SURVEY OFFICE (USE ONLY)

PERSONNEL

REFERENCE NO. 68

SHEET 2 OF 21

NOTES AUBLE

DATE 3/28/18

ROUTE SR 108

H.C. LEU

WEATHER CLOUDY

COUNTY HENRY

R.C. AUBLE

TEMP. 43°

TOWNSHIP NAPOLEON

SECTION 11

DWG BY NIESE

PID 101211

T 5 N R 6 E

TYPE MONUMENT MONBOX W/ 1" IPIN

ON SURFACE - ~~BELOW~~ ON

OFFSET 1.0' LT : RT

- TO - EDGE PAVEMENT

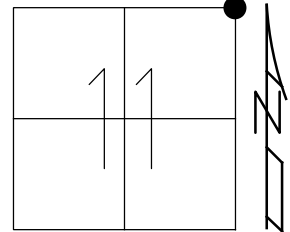
STATION: 935+97.36

HORIZ.DATUM: NAD83(2011)

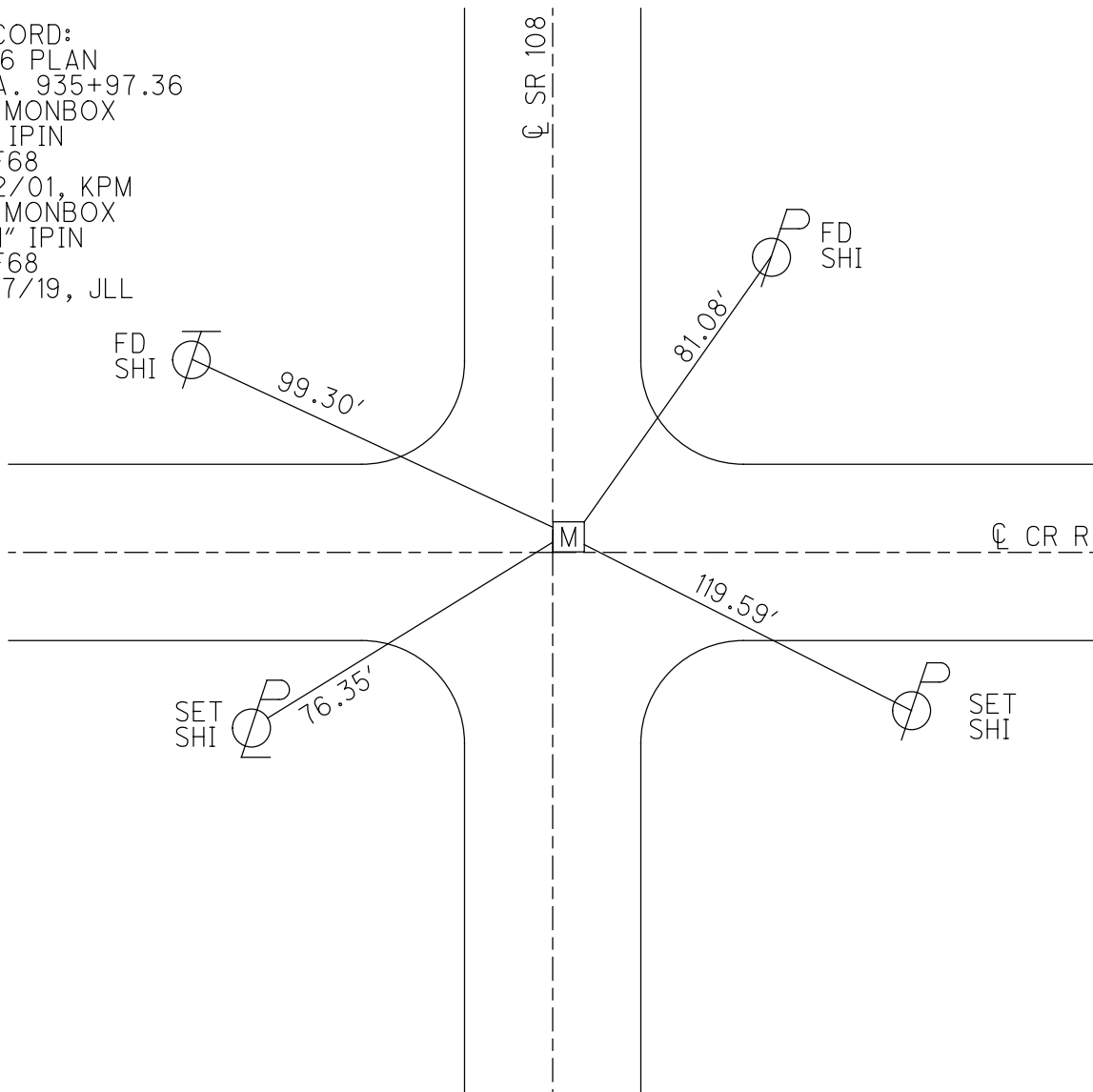
GEOID: 2012A

GRID: NORTHING: 640670.064

EASTING: 1520887.406



RECORD:
1966 PLAN
STA. 935+97.36
FD MONBOX
W/ IPIN
REF68
8/2/01, KPM
FD MONBOX
W/1" IPIN
REF68
9/17/19, JLL



O.D.O.T. DISTRICT 2 SURVEY OFFICE (USE ONLY)

PERSONNEL _____

REFERENCE NO. 68

SHEET 2 OF 21

NOTES HUSS

DATE 4/15/09

ROUTE SR 108

H.C. CORDES

WEATHER CLDY-RAIN

COUNTY HENRY

R.C. CORY

TEMP. 45°

TOWNSHIP NAPOLEON

SECTION 11

T 5 N R 6 E

TYPE MONUMENT MON.BOX

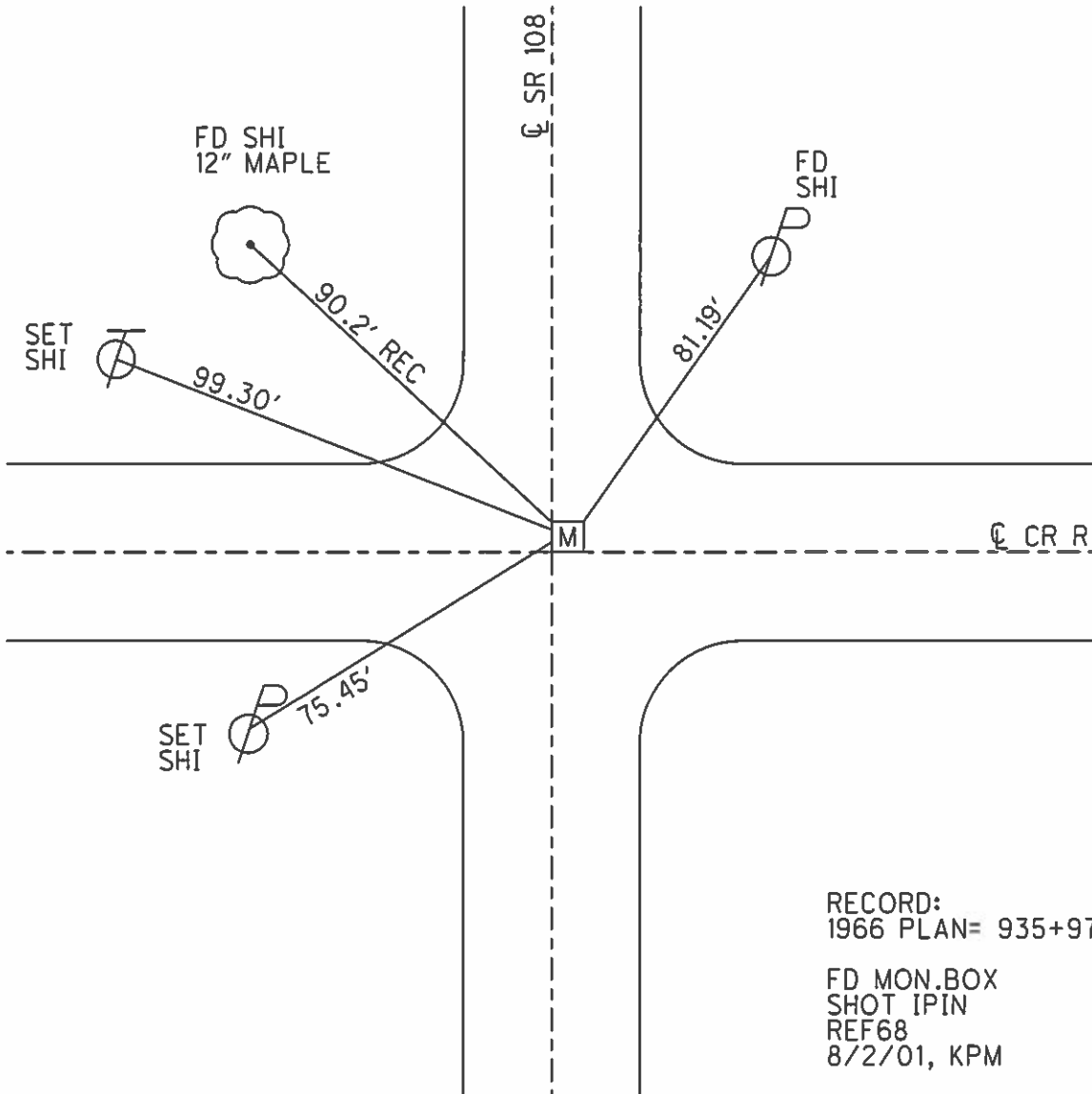
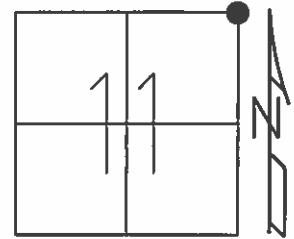
ON SURFACE - ~~BELOW~~ ON

~~LEFT~~ - Q PAV'T - RIGHT 1.0'

- TO - EDGE PAVEMENT

S.L.M. 935+97.36

Grid: Northing: 640670.052 Easting: 1520887.302



RECORD:
1966 PLAN= 935+97.36

FD MON.BOX
SHOT IPIN
REF68
8/2/01, KPM

O.D.O.T. DISTRICT 2 SURVEY OFFICE

PERSONNEL

REFERENCE NO. 68

SHEET 11 OF 21

NOTES MOSER

H.C. CANTERBURY

R.C. MOSER

DATE 8-2-01

WEATHER OVERCAST

TEMP. +90°F

ROUTE 108

COUNTY HENRY

TOWNSHIP NAPOLEON

SECTION 11

T 5 N R 6 E

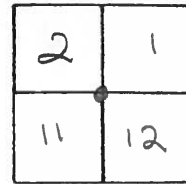
TYPE MONUMENT Mon. Box

ON SURFACE - ~~BELOW~~ ON

~~LEFT - C PAV'T.~~ - RIGHT 1.0' RT

- TO - EDGE PAVEMENT

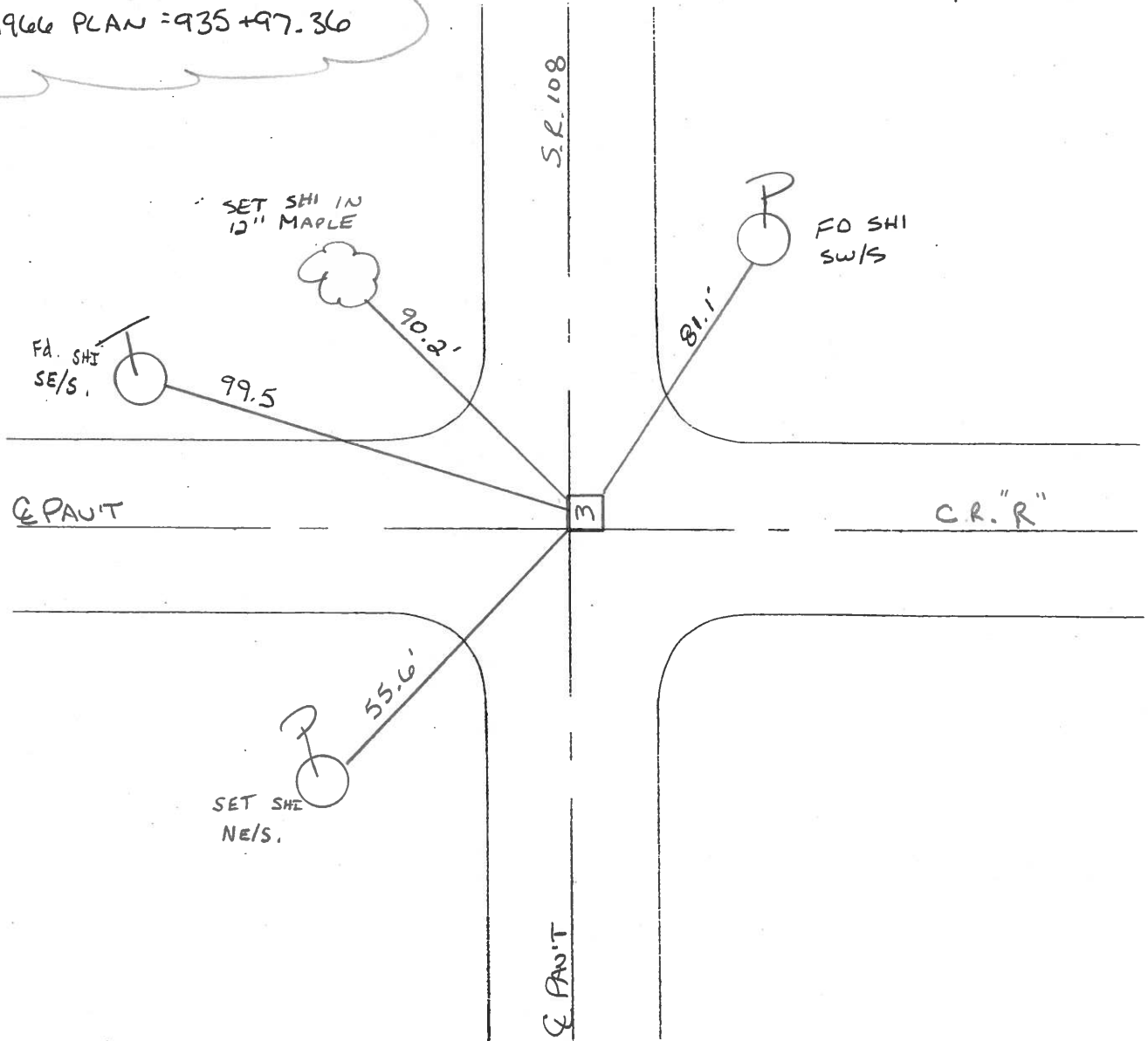
S.L.M. 935+30



RECORD:

1966 PLAN = 935+97.36

DID NOT OPEN L10



O.D.O.T. DISTRICT 2 SURVEY OFFICE

PERSONNEL _____

REFERENCE NO. _____

SHEET 23 OF 33

NOTES HOFFMAN

H.C. BARNHISEL

R.C. LOSHRICE

RAED

DATE 4-18-88

WEATHER P. CLEAR

TEMP. 43°

ROUTE SR 108

COUNTY HENRY

TOWNSHIP NAPOLEON

SECTION 11

T.S. N R 6 E

TYPE MONUMENT MONUMENT BOX

ON SURFACE - BELOW YES

~~LEFT~~ & PAV'T. - ~~RIGHT~~ YES

TO EDGE PAVEMENT 1' N. & Part EAST

S.L.M. 935+30

2	1
11	12



1966 PLAK = 935+97.36

DID NOT OPEN LID

68

