

O.D.O.T. DISTRICT 2 SURVEY OFFICE (USE ONLY)

PERSONNEL

REFERENCE NO. 71 A

SHEET 14 OF 21

NOTES AUBLE

DATE 3/28/18

ROUTE SR 108

H.C. LEU

WEATHER CLOUDY

COUNTY HENRY

R.C. AUBLE

TEMP. 43°F

TOWNSHIP FREEDOM

DWG BY NIESE

PID 101211

SECTION 35

T 6 N R 6 E

TYPE MONUMENT MAG/WASHER

ON SURFACE - ~~BELOW~~ ON

OFFSET  $\odot$  PAVEMENT 0.5' LT : ~~RT~~

11.0' TO LT EDGE PAVEMENT

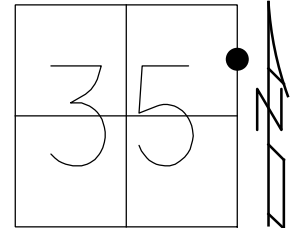
STATION: 1029+20.69

HORIZ.DATUM: NAD83(2011)

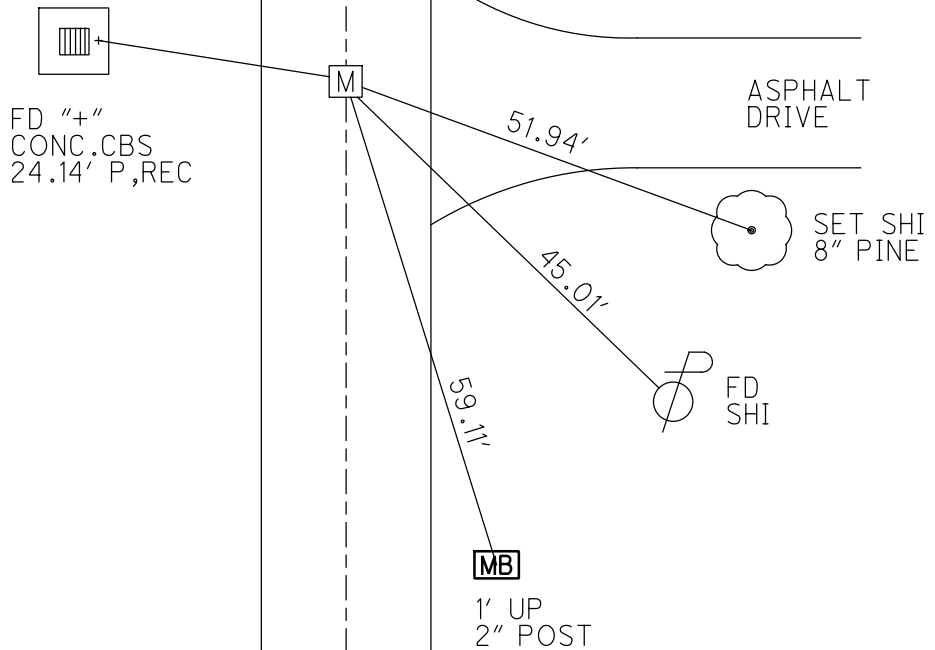
GEOID: 2012A

GRID: NORTHING: 649881.634

EASTING: 1520443.966



RECORD:  
 FD 3/4" IPIPE  
 3" DOWN  
 5/22/84, IRS  
 FD SQ.HEADED SPIKE  
 8/9/94, VD  
 SET P.K./WASHER  
 8/25/94, MB  
 FD P.K./WASHER  
 2/14/08  
 SET MAG/WASHER  
 9/4/09, SAH  
 FD MAG/WASHER  
 REFA71  
 4/4/18, JLL  
 FD MAG/WASHER  
 9/17/19, JLL



O.D.O.T. DISTRICT 2 SURVEY OFFICE (USE ONLY)

PERSONNEL

REFERENCE NO. 71 A

SHEET 14 OF 21

NOTES HUSS

DATE 4/15/09

ROUTE SR 108

H.C. CORDES

WEATHER CLDY-BREEZY

COUNTY HENRY

R.C. CORY

TEMP. 47°

TOWNSHIP FREEDOM

SECTION 35

T 6 N R 6 E

TYPE MONUMENT P.K./WASHER

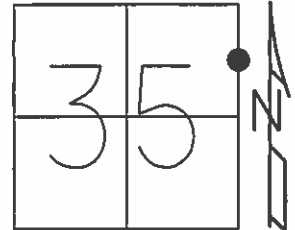
ON SURFACE - ~~BELOW~~ ON

LEFT - CL PAV'T - ~~RIGHT~~ 0.5'

11.0' TO LT EDGE PAVEMENT

S.L.M. 1029+20.69

Grid: Northing: 649881.650 Easting: 1520443.968



FD "+" IN  
CONC.  
C.B.S.



24.16' P  
REC

CL SR 108



27.81'

ASPHALT  
DRIVE

SET  
SHI

44.95'



FD  
SHI

RECORD:  
1/16 COR. SEC. 35-36  
FD. 3/4" IPIPE  
3" DEEP  
5/22/84, I.STONE

FD SQ.HEAD SPIKE  
8/9/94, VD

SET PK/WASHER  
8/25/94, MB

FD PK/WASHER  
2/14/08

SET MAG/WASHER  
9/4/09, SAH

O.D.O.T. DISTRICT 2 SURVEY OFFICE

PERSONNEL

REFERENCE NO. 71-A

SHEET 2 OF 8

NOTES VAN DUSEN

H.C. CORDES

DATE 8-9-94

ROUTE 108

R.C. SLOVAK

WEATHER CLOUDY

COUNTY HENRY

TEMP. +55°F

TOWNSHIP FREEDOM

SECTION 36

T. 6 N R. 6 E

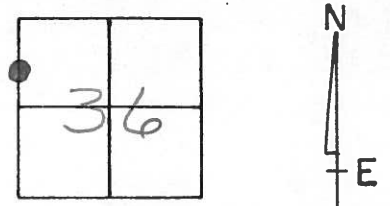
TYPE MONUMENT SQUARE HEAD SPK.

ON SURFACE - ~~BELOW~~ YES

LEFT-~~0~~ PAV'T. - ~~RIGHT~~ 0.4

11.2 TO LT. EDGE PAVEMENT

S.L.M. 1028+53



RECORDED:

1/16 Cor. Sec. 35-36

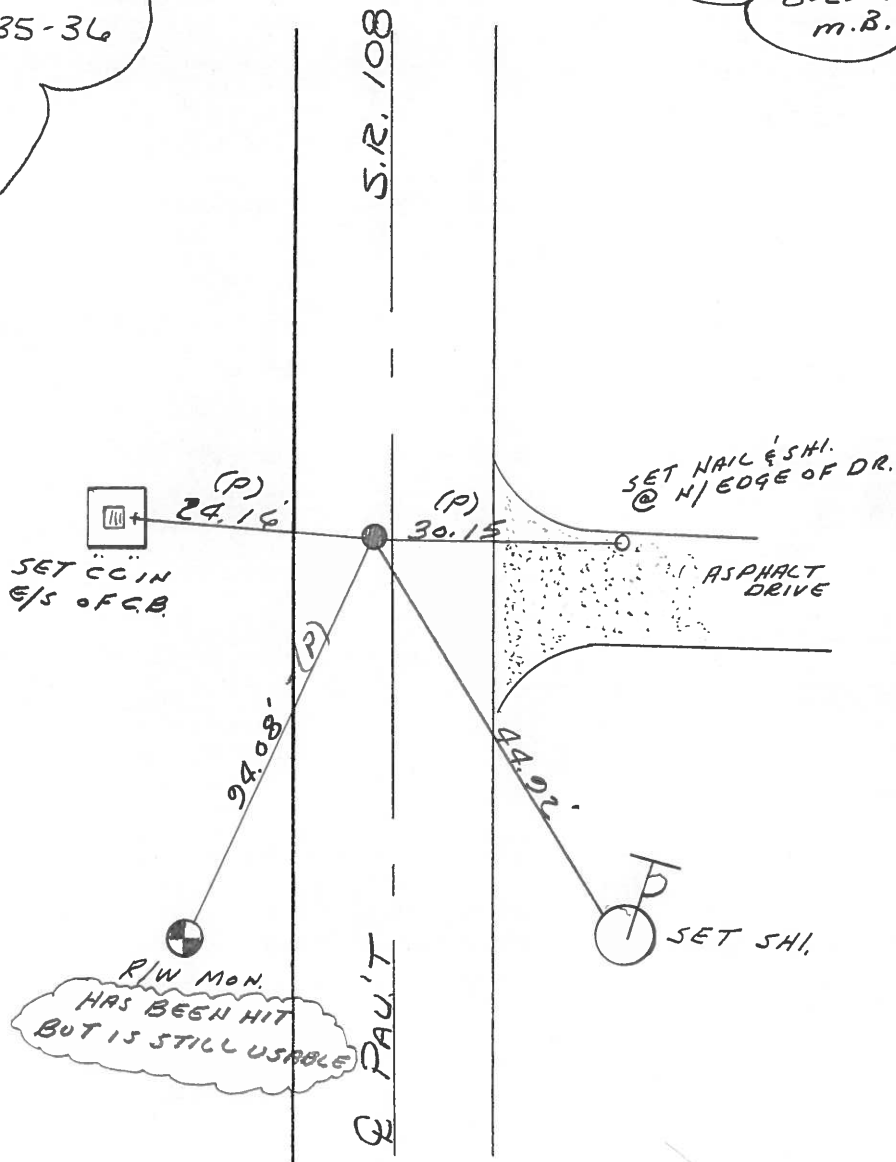
Fd 3/4" I-Pipe

3" DEEP

5-22-84

I. STONE

SET PK & WASHER  
8-25-94  
m.B.



Resurfaced 1994

Q.D.O.T. DISTRICT 2 SURVEY OFFICE

SHEET 2 OF

County Henry S.R. 108

Date 22 May 84

Township Freedom

Weather Cloudy

Section 36

Temp. 64°

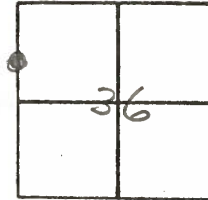
T N, R E

Personnel I. Stone

P. Newser

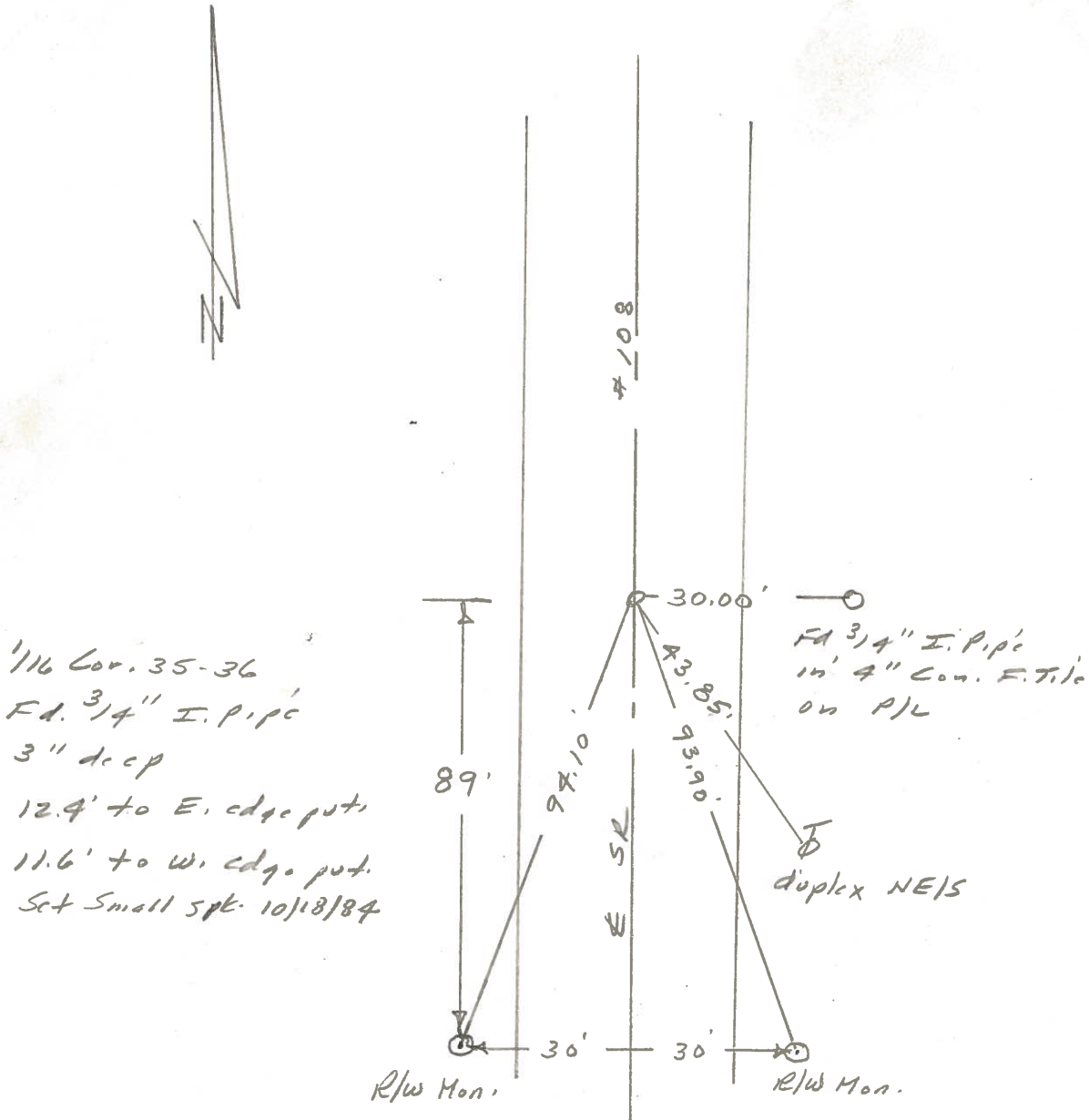
R. Michalak

D. Curtis



SLM 1036 + 44

REF NO. 71-A



PERSONNEL TITLE PERSONNEL TITLE

Red Beach  
Newcomb  
Knappe  
Wise

COUNTY HENRY

DATE Aug 1971

S. R. Freedom Twp.

WEATHER

SEC. 36

TEMP.

ALIGNMENT & CONTROLS

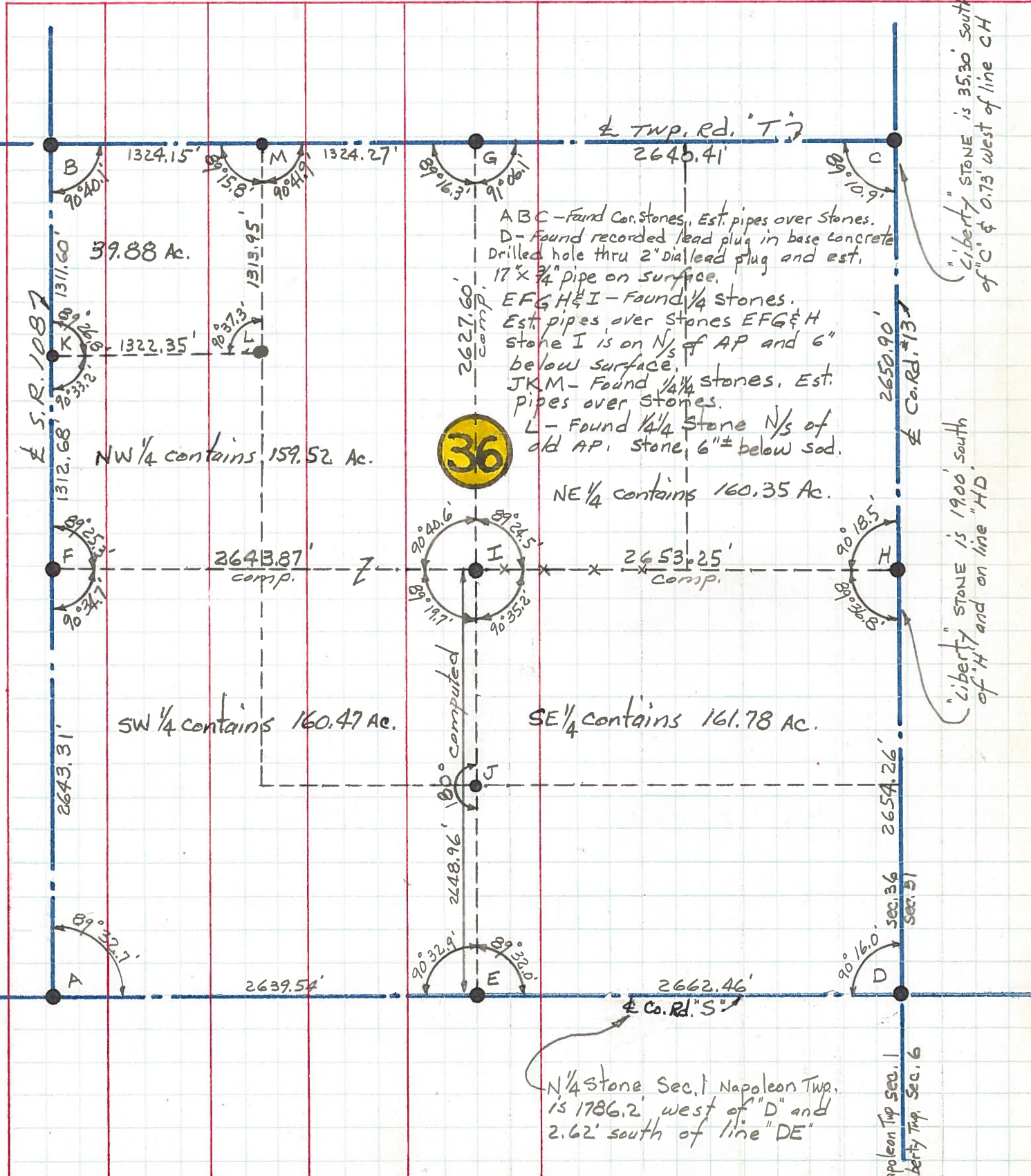
DESCRIPTION

LEFT

CENTER LINE

RIGHT

JOB NO.



ABC - Found Cor. stones, Est. pipes over stones.  
 D - Found recorded lead plug in base concrete  
 Drilled hole thru 2" dia lead plug and est.  
 17" x 3/4" pipe on surface.  
 EFGH & I - Found 1/4 stones.  
 Est. pipes over stones EFG & H  
 stone I is on N 1/2 of AP and 6"  
 below surface.  
 JKM - Found 1/4 stones, Est.  
 pipes over stones.  
 L - Found 1/4 Stone N 1/2 of  
 old AP, stone, 6" ± below sod.

"Liberty" stone is 35.30' south  
 of "C" & 0.75' west of line CH

"Liberty" stone is 19.00' south  
 of "H" and on line "HD"

N 1/4 Stone Sec. 1 Napoleon Twp.  
 is 1786.2' west of "D" and  
 2.62' south of line "DE"



PERSONNEL TITLE PERSONNEL TITLE  
 Red Beach \_\_\_\_\_ COUNTY HENRY DATE 25 Aug. 71  
 Newcomb \_\_\_\_\_ S. R. 108 WEATHER \_\_\_\_\_  
 Knape \_\_\_\_\_ SEC. Freedom Twp. TEMP. \_\_\_\_\_  
 Wise \_\_\_\_\_

