

O.D.O.T. DISTRICT 2 SURVEY OFFICE (USE ONLY)

PERSONNEL \_\_\_\_\_

REFERENCE NO. 72

SHEET 15 OF 21

NOTES AUBLE

DATE 3/28/18

ROUTE SR 108

H.C. LEU

WEATHER CLDY-BREEZY

COUNTY HENRY

R.C. AUBLE

TEMP. 43°F

TOWNSHIP FREEDOM

DWG BY NIESE PID 101211

SECTION 35

T 6 N R 6 E

TYPE MONUMENT MAG/WASHER

ON SURFACE - ~~BELOW~~ ON

OFFSET  $\text{C}$  PAVEMENT 2.9' LT : ~~RT~~

8.7' TO LT EDGE PAVEMENT

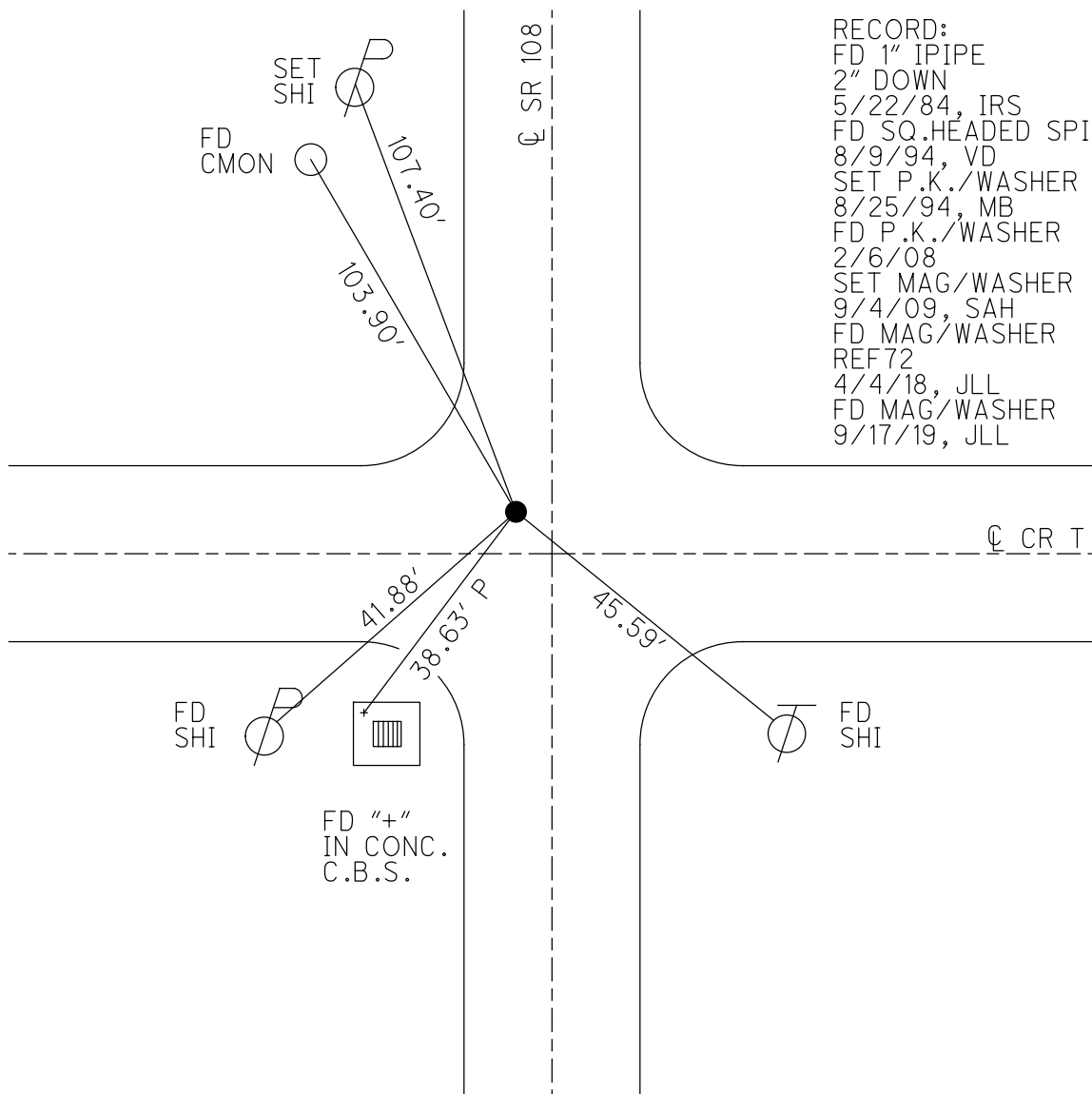
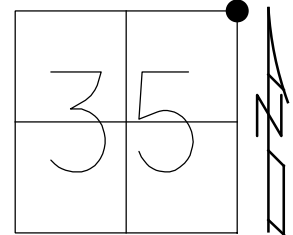
STATION: 1042+32.09

HORZ.DATUM: NAD83(2011)

GEOID: 2012A

GRID: NORTHING: 651192.813

EASTING: 1520474.637

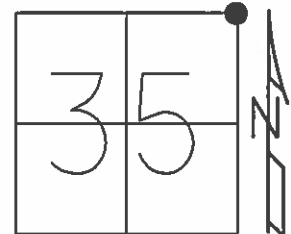


RECORD:  
 FD 1" IPIPE  
 2" DOWN  
 5/22/84, IRS  
 FD SQ.HEADED SPIKE  
 8/9/94, VD  
 SET P.K./WASHER  
 8/25/94, MB  
 FD P.K./WASHER  
 2/6/08  
 SET MAG/WASHER  
 9/4/09, SAH  
 FD MAG/WASHER  
 REF72  
 4/4/18, JLL  
 FD MAG/WASHER  
 9/17/19, JLL

O.D.O.T. DISTRICT 2 SURVEY OFFICE (USE ONLY)

PERSONNEL \_\_\_\_\_ REFERENCE NO. 72 SHEET 15 OF 21  
 NOTES HUSS DATE 4/15/09 ROUTE SR 108  
 H.C. CORDES WEATHER CLDY-BREEZY COUNTY HENRY  
 R.C. CORY TEMP. 55° TOWNSHIP FREEDOM  
 \_\_\_\_\_ SECTION 35  
 \_\_\_\_\_ T 6 N R 6 E

TYPE MONUMENT P.K./WASHER  
 ON SURFACE - ~~BELOW~~ ON \_\_\_\_\_  
 LEFT - Q PAV'T - ~~RIGHT~~ 2.9'  
8.7' TO LT EDGE PAVEMENT  
 S.L.M. 1042+32.09



Grid: Northing: 651192.698 Easting: 1520474.591

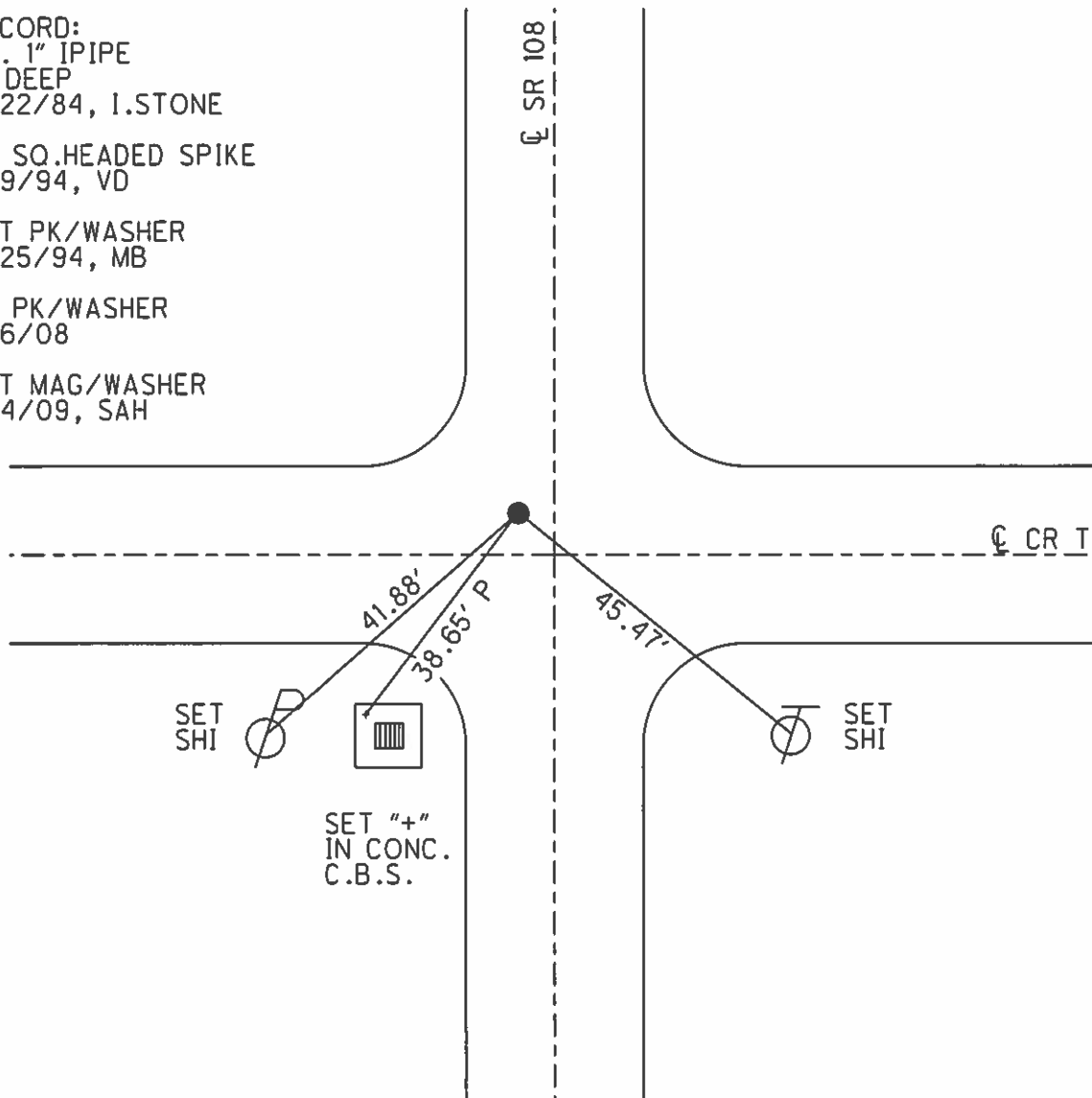
RECORD:  
 FD. 1" IPIPE  
 2" DEEP  
 5/22/84, I.STONE

FD SQ.HEADED SPIKE  
 8/9/94, VD

SET PK/WASHER  
 8/25/94, MB

FD PK/WASHER  
 2/6/08

SET MAG/WASHER  
 9/4/09, SAH



O.D.O.T. DISTRICT 2 SURVEY OFFICE

PERSONNEL

REFERENCE NO. 72

SHEET 3 OF 8

NOTES VAN DUSEN

H.C. CORDES

R.C. SLOVAK

DATE 8-9-94

WEATHER CLOUDY

TEMP. +55°F

ROUTE 108

COUNTY HENRY

TOWNSHIP FREEDOM

SECTION 36

T 6 N R 6 E

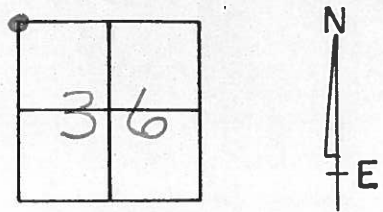
TYPE MONUMENT SD HEAD SPK

ON SURFACE - ~~BELOW~~ ON SURFACE

LEFT - ☉ PAV'T. - ~~RIGHT~~ 2.9

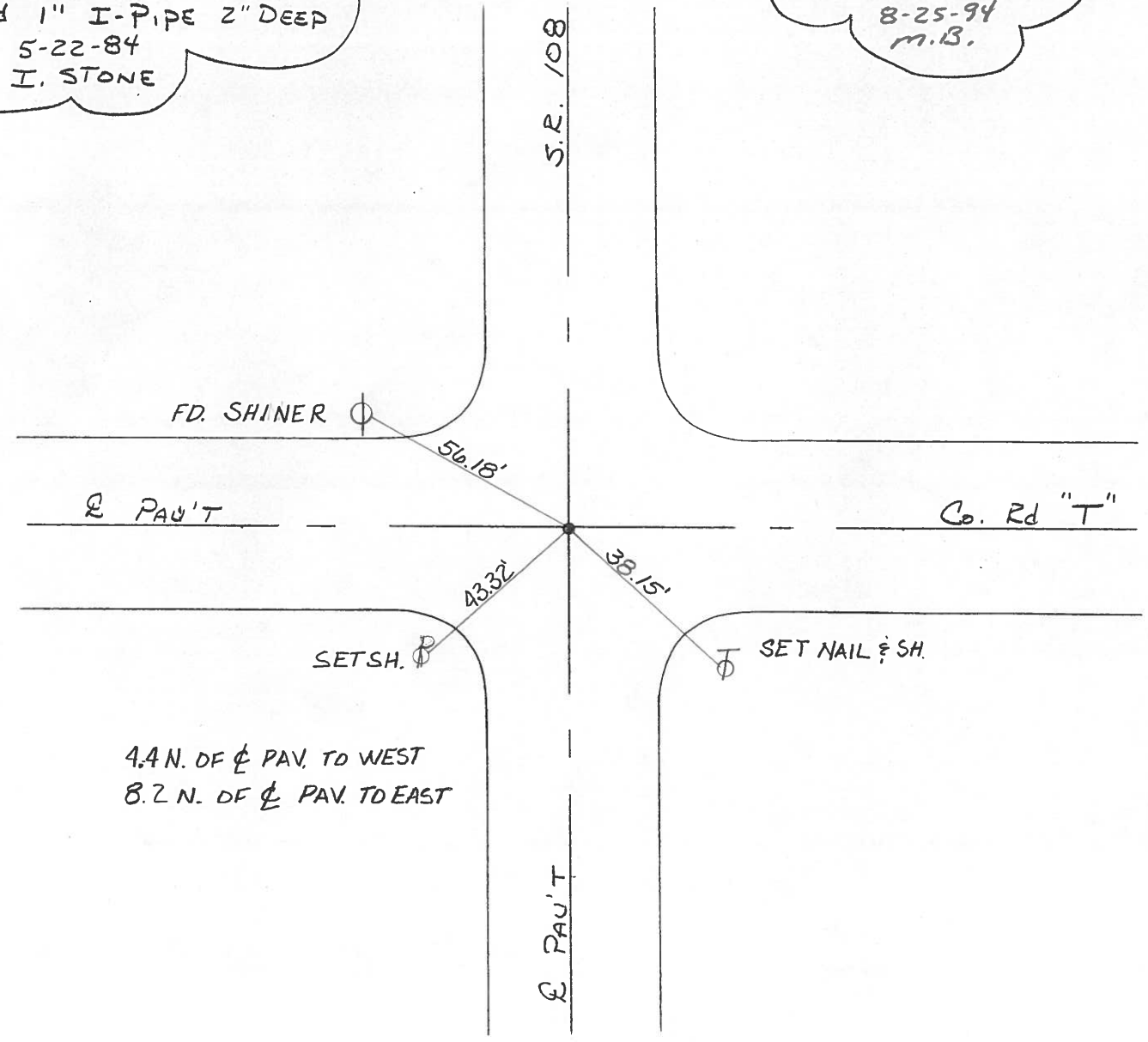
8.7 TO LT. EDGE PAVEMENT

S.L.M. 1041+66



RECORD:  
FD 1" I-PIPE 2" DEEP  
5-22-84  
I. STONE

SET PK & WASHER  
8-25-94  
M.B.



Q.D.O.T. DISTRICT 2 SURVEY OFFICE

SHEET 3 OF

County Henry S.R. 108

Date 22 May 84

Township Freedom

Weather Cloudy

Section 25-26-35-36

Temp. 64°

T N, R E

Personnel L. Stone

P. Neuser

R. Michalak

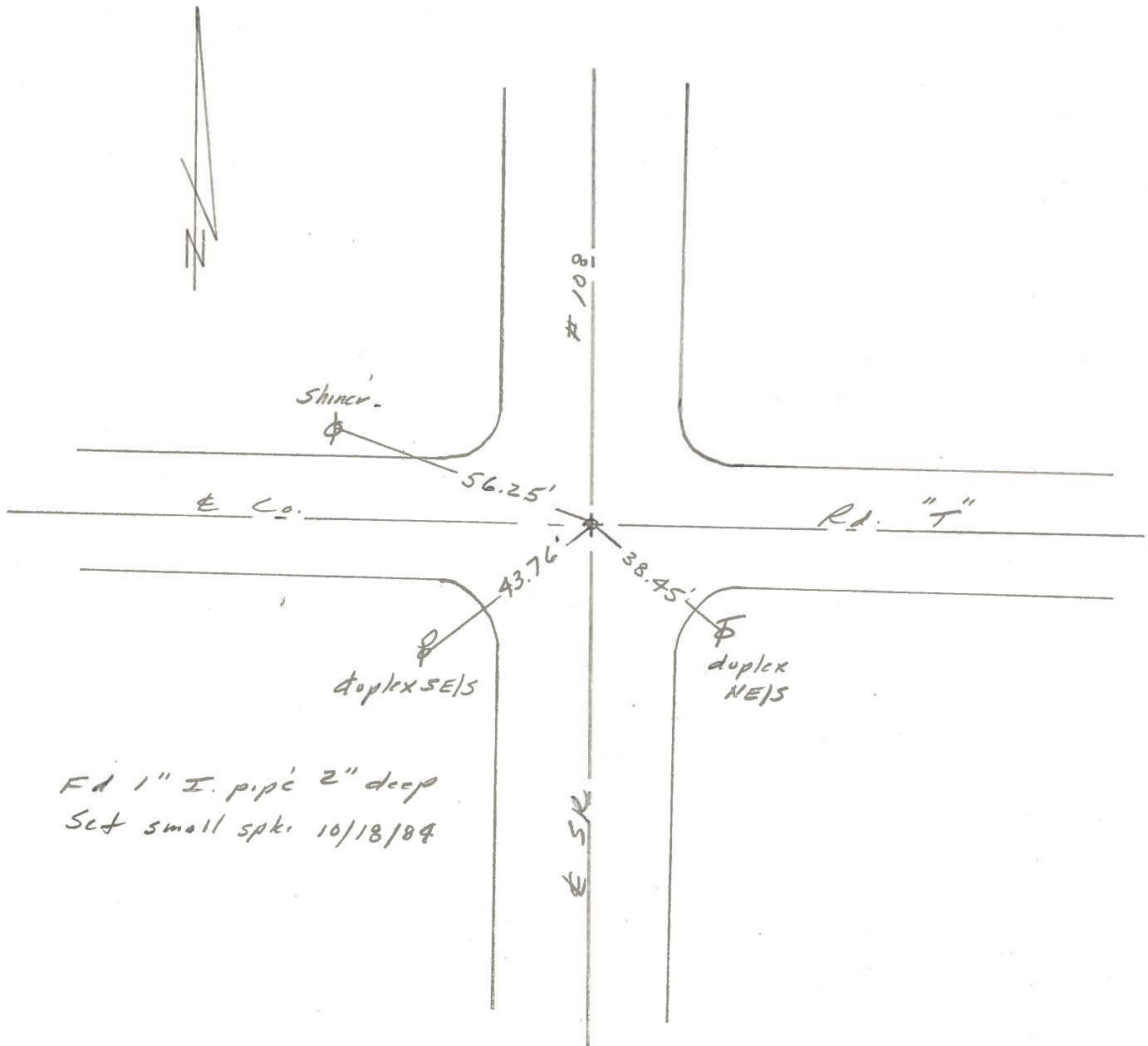
D. Curtis

26	25
35	36



SLM 1049+55

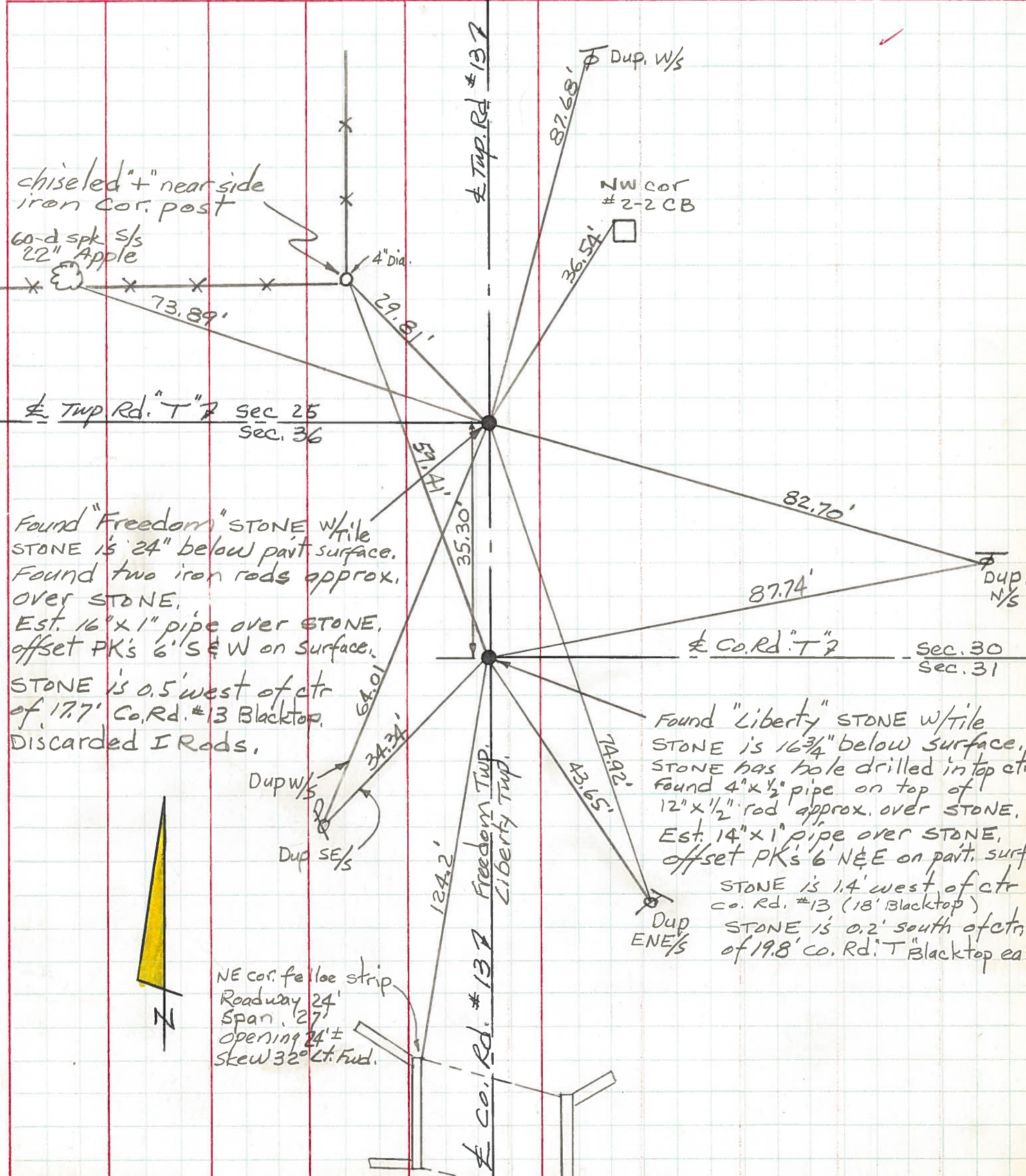
REF. No. 72



PERSONNEL TITLE PERSONNEL TITLE  
 Red Beach  
 Newcomb  
 Knappe  
 Wise

COUNTY HENRY DATE 25 Aug 71  
 S. R. Adrian Pike WEATHER  
 SEC. Freedom Twp. TEMP.

DESCRIPTION CONTROL POINTS JOB NO.



chiseled 4" near side iron cor. post

60-d spk S/S 22" Apple

Twp. Rd. #7 Sec. 25 Sec. 36

Found "Freedom" STONE w/tile STONE is 24" below pavt surface. Found two iron rods approx. over STONE. Est. 16" x 1" pipe over STONE, offset PK's 6' S & W on surface. STONE is 0.5' west of ctr of 17.7' Co. Rd. #13 Blacktop. Discarded I Rods.

Found "Liberty" STONE w/tile STONE is 16 3/4" below surface. STONE has hole drilled in top ctr. Found 4" x 1/2" pipe on top of 12" x 1/2" rod approx. over STONE. Est. 14" x 1" pipe over STONE, offset PK's 6' N & E on pavt. surf. STONE is 1.4' west of ctr Co. Rd. #13 (18' Blacktop) STONE is 0.2' south of ctr of 19.8' Co. Rd. #7 Blacktop eas

NE cor. fellow strip Roadway 24' Span, 27' opening 24' ± skew 32° Lt. Fwd.



Co. Rd. #13 Freedom Twp. Liberty Twp.

Co. Rd. #7 Sec. 30 Sec. 31

PERSONNEL TITLE PERSONNEL TITLE

Red Beach  
Newcomb  
Knappe  
Wise

COUNTY HENRY

DATE Aug 1971

S. R. Freedom Twp.

WEATHER

SEC. 36

TEMP.

ALIGNMENT & CONTROLS

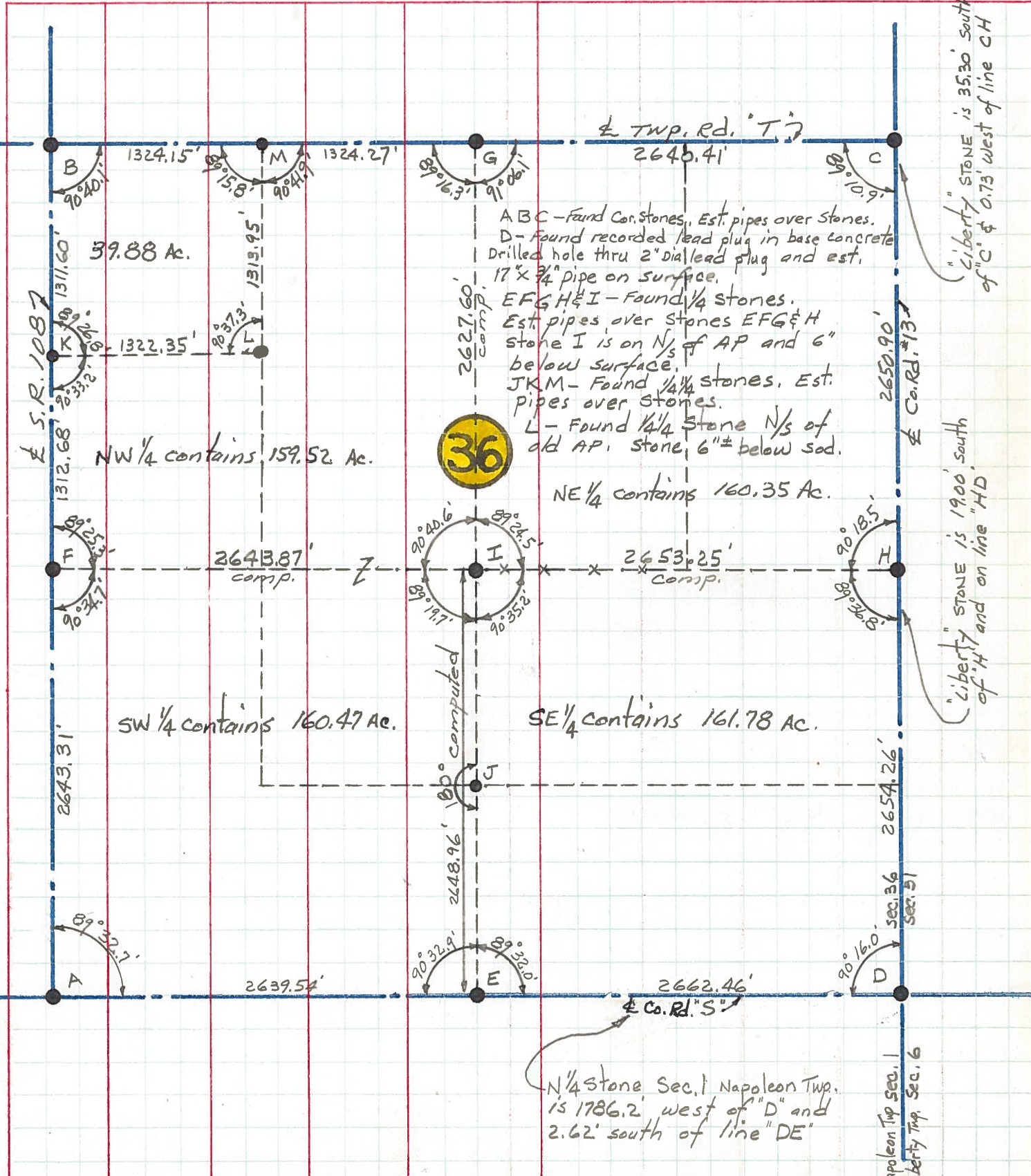
DESCRIPTION

LEFT

CENTER LINE

RIGHT

JOB NO.



ABC - Found Cor. stones, Est. pipes over stones.  
 D - Found recorded lead plug in base concrete. Drilled hole thru 2" dia lead plug and est. 17" x 3/4" pipe on surface.  
 EFGH & I - Found 1/4 stones. Est. pipes over stones EFG & H. Stone I is on N 1/2 of AP and 6" below surface.  
 JKM - Found 1/4 stones. Est. pipes over stones.  
 L - Found 1/4 Stone N 1/2 of old AP. Stone, 6" below sod.

"Liberty" stone is 35.30' south of "C" & 0.73' west of line "CH"

"Liberty" stone is 19.00' south of "H" and on line "HD"

N 1/4 Stone Sec. 1 Napoleon Twp. is 1786.2' west of "D" and 2.62' south of line "DE"

Napoleon Twp. Sec. 1  
 Liberty Twp. Sec. 6

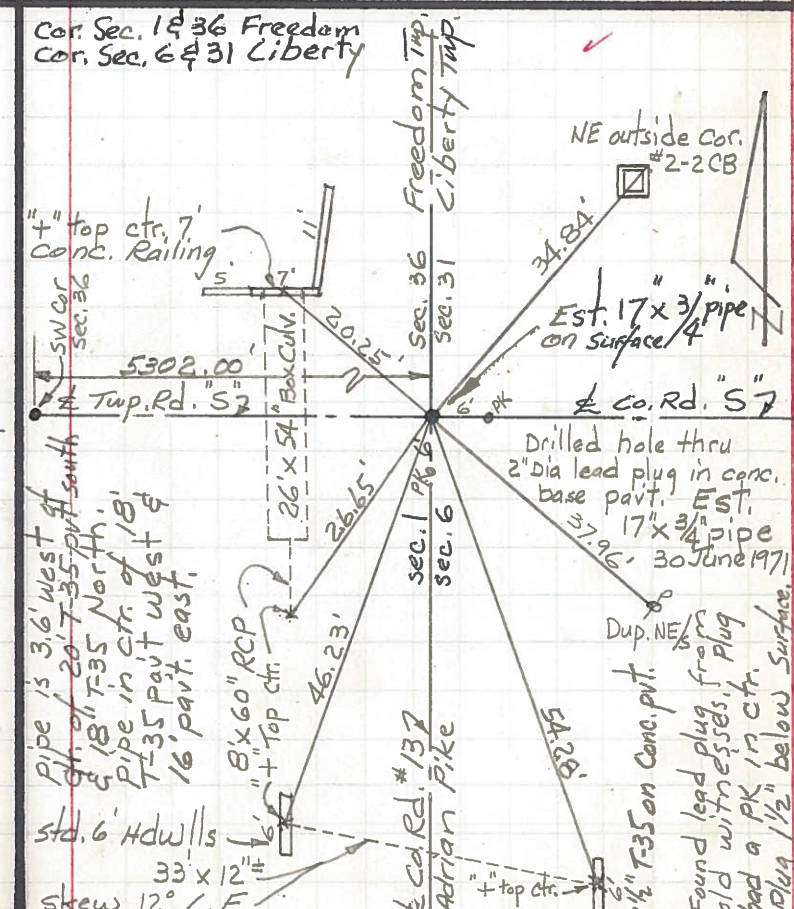
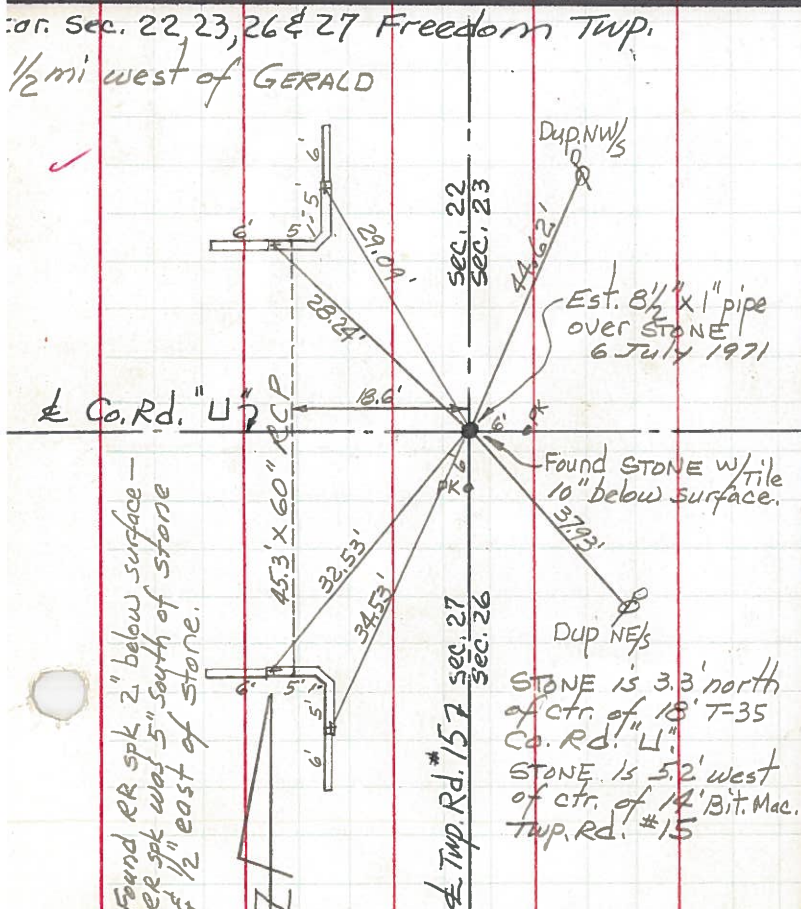
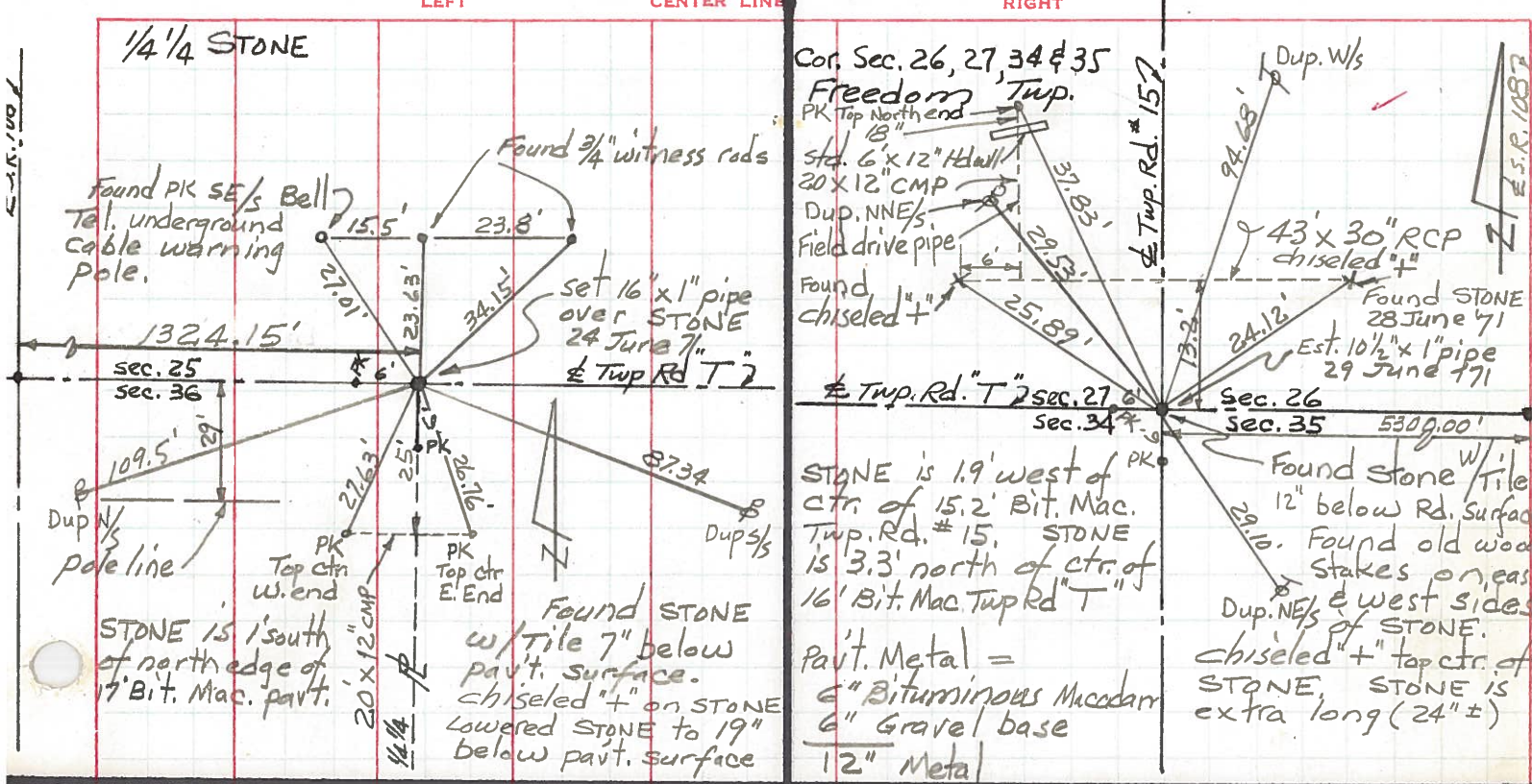
PERSONNEL TITLE PERSONNEL TITLE  
 Red Beach, Newcomb  
 Knape  
 Wise

COUNTY HENRY DATE June-July 1971

S. R. 108 WEATHER

SEC. FREEDOM Twp TEMP.

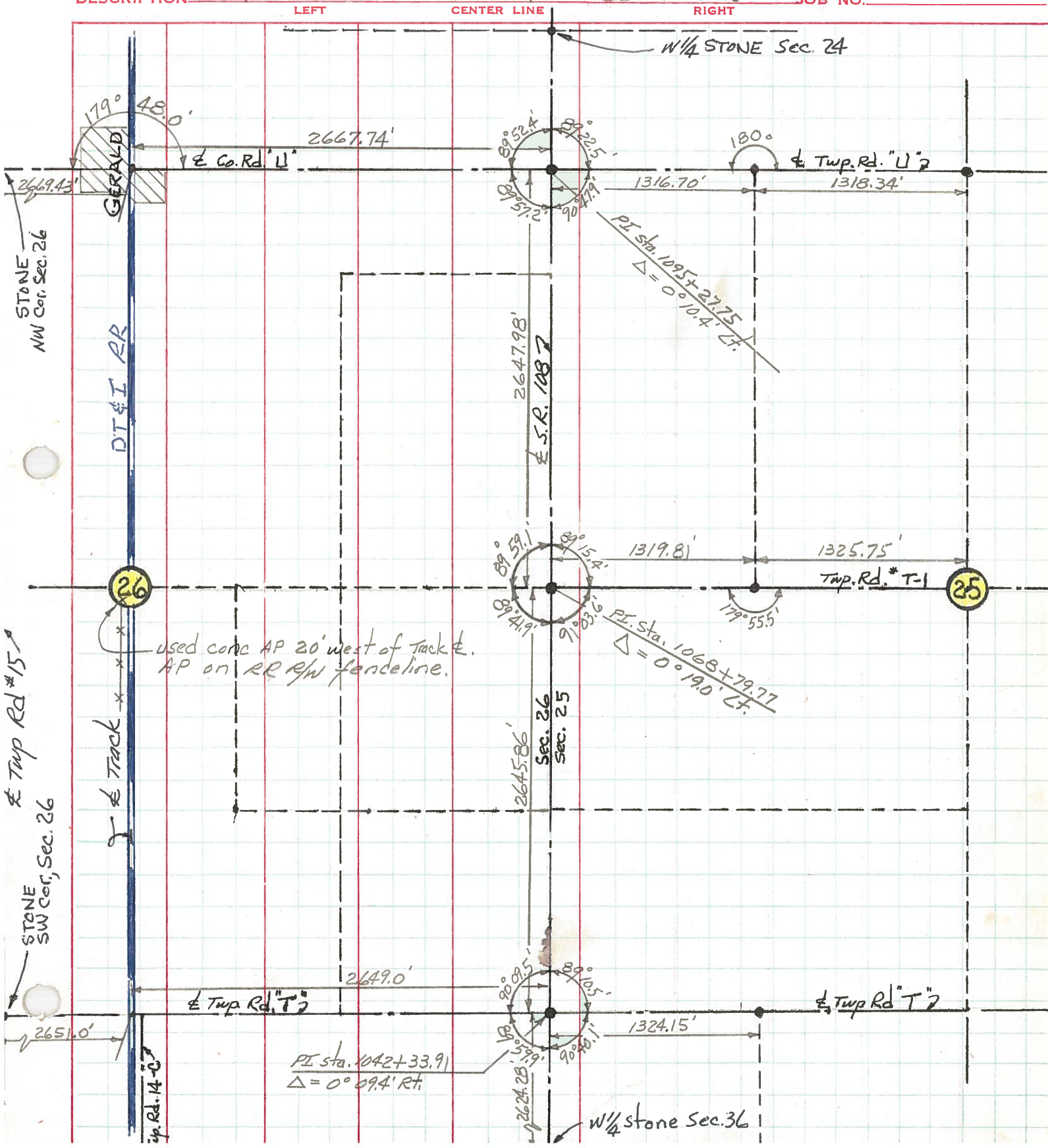
DESCRIPTION CONTROL POINTS JOB NO.



PERSONNEL TITLE PERSONNEL TITLE  
 Red Beach,  
 Newcomb  
 Knape  
 Wise

COUNTY HENRY DATE July 1971  
 S. R. 108 WEATHER  
 SEC. FREEDOM TWP. TEMP.

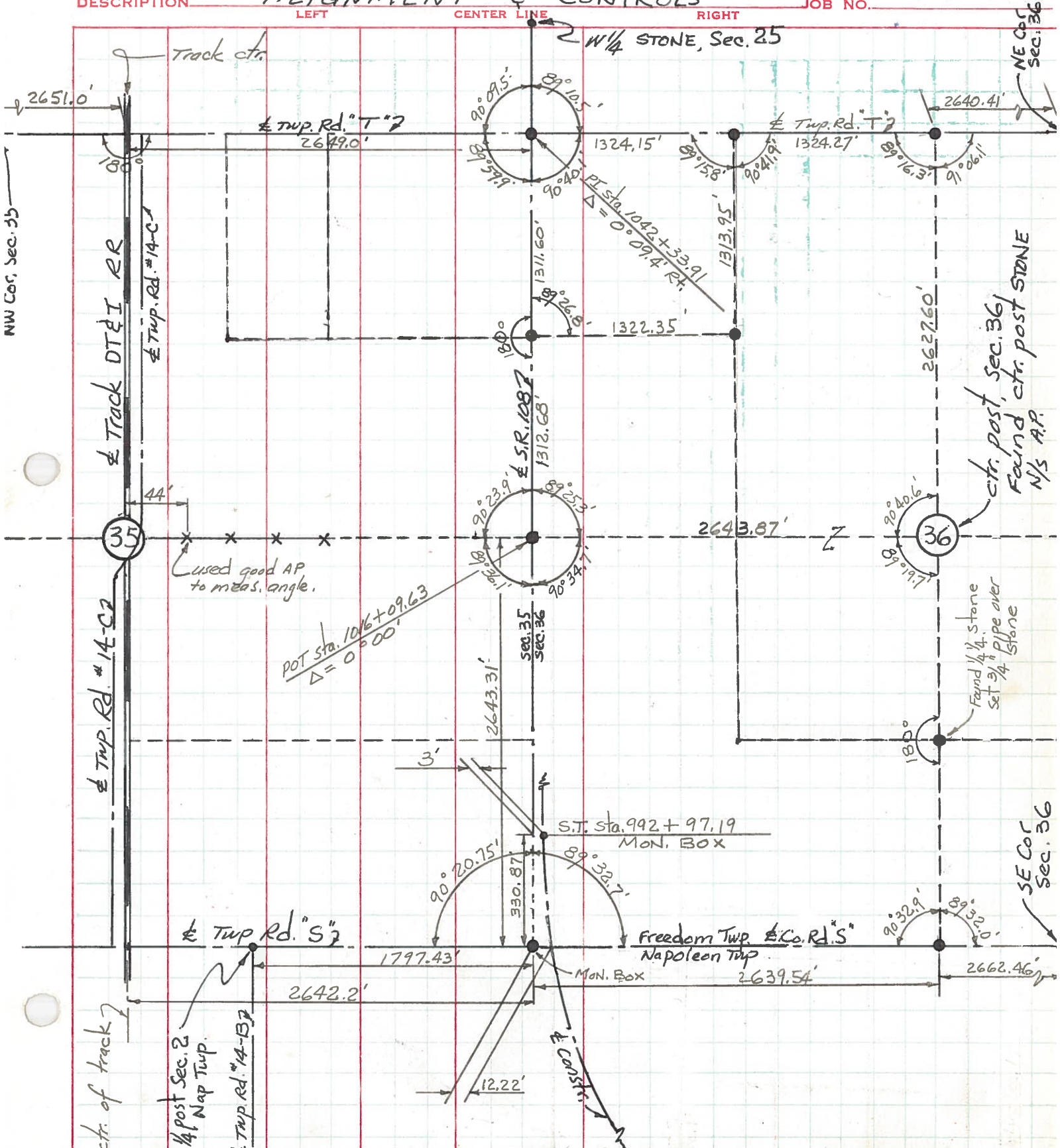
DESCRIPTION ALIGNMENT & CONTROLS JOB NO.





PERSONNEL TITLE PERSONNEL TITLE COUNTY HENRY DATE July 1971  
 Red Beach Newcomb S. R. 108 WEATHER  
 Knape Wise SEC. Freedom Twp. TEMP.

DESCRIPTION ALIGNMENT & CONTROLS LEFT CENTER LINE RIGHT JOB NO.



PERSONNEL TITLE PERSONNEL TITLE  
 Red Beach \_\_\_\_\_  
 Newcomb \_\_\_\_\_  
 Knape \_\_\_\_\_  
 Wise \_\_\_\_\_

COUNTY HENRY DATE June 1971

S. R. 108 WEATHER \_\_\_\_\_

SEC. FREEDOM TWP. TEMP. \_\_\_\_\_

DESCRIPTION CONTROL POINTS JOB NO.

