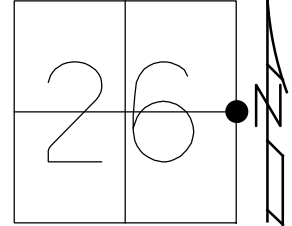


O.D.O.T. DISTRICT 2 SURVEY OFFICE (USE ONLY)

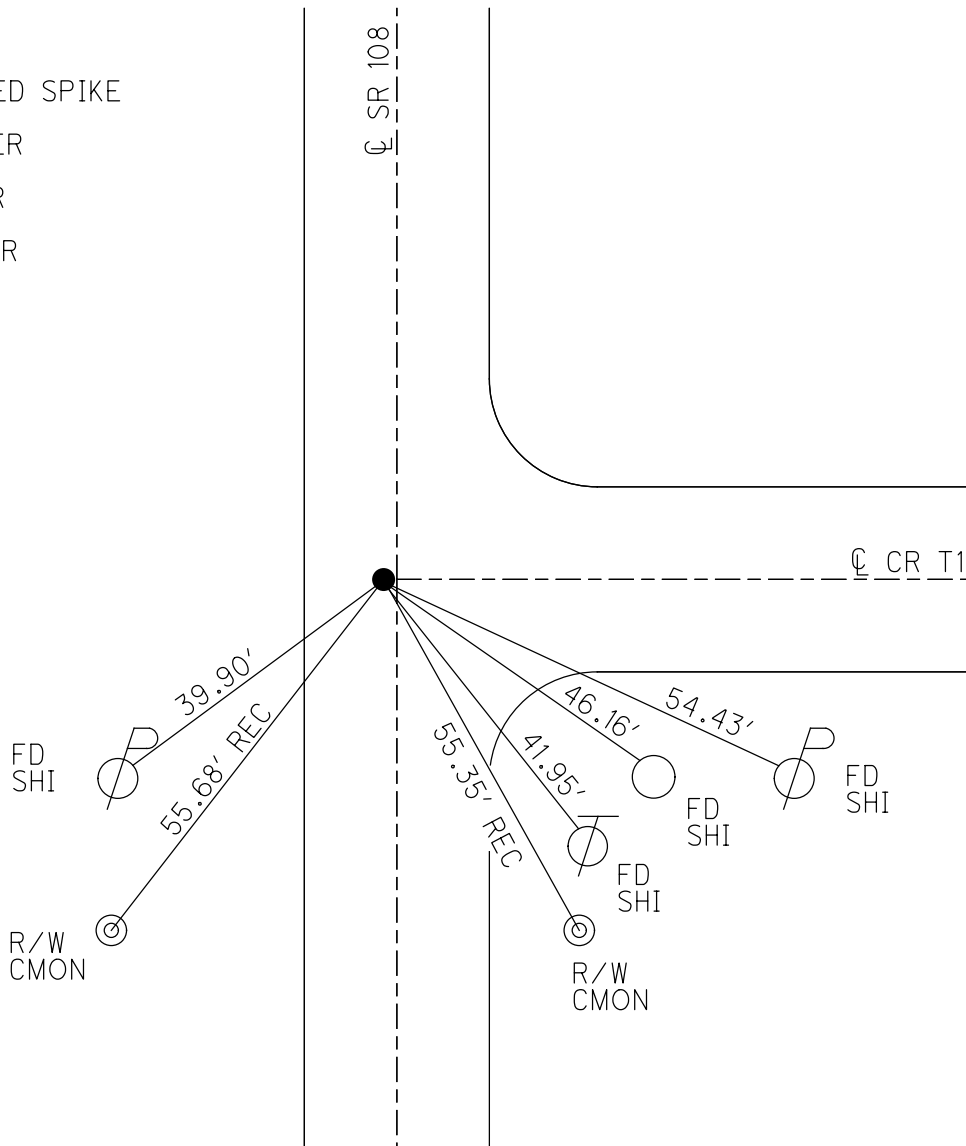
PERSONNEL _____ REFERENCE NO. 73 SHEET 16 OF 21
 NOTES AUBLE DATE 3/28/18 ROUTE SR 108
 H.C. LEU WEATHER CLOUDY COUNTY HENRY
 R.C. AUBLE TEMP. 42°F TOWNSHIP FREEDOM
 SECTION 26
 DWG BY NIESE PID 101211 T 6 N R 6 E

TYPE MONUMENT MAG/WASHER
 ON SURFACE - ~~BELOW~~ ON
 OFFSET C PAVEMENT 1.0' LT : ~~RT~~
10.9' TO LT EDGE PAVEMENT
 STATION: 1068+77.87



HORZ.DATUM: NAD83(2011) GEOID: 2012A
 GRID: NORTHING: 653837.684 EASTING: 1520543.696

RECORD:
 FD SM.SQ.HEADED SPIKE
 8/9/94, VD
 SET P.K./WASHER
 8/25/94, MB
 FD P.K./WASHER
 2/6/08
 SET MAG/WASHER
 9/4/09, SAH
 FD MAG/WASHER
 REF73
 4/4/18, JLL
 FD MAG/WASHER
 9/17/19, JLL



O.D.O.T. DISTRICT 2 SURVEY OFFICE (USE ONLY)

PERSONNEL

REFERENCE NO. 73

SHEET 16 OF 21

NOTES HUSS

DATE 4/16/09

ROUTE SR 108

H.C. CORDES

WEATHER CLEAR

COUNTY HENRY

R.C. CORY

TEMP. 50°

TOWNSHIP FREEDOM

SECTION 26

T 6 N R 6 E

TYPE MONUMENT P.K./WASHER

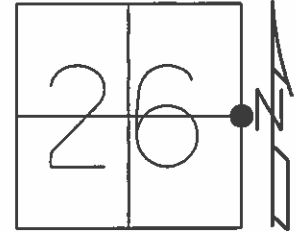
ON SURFACE - ~~BELOW~~ ON

LEFT - CL PAV'T - ~~RIGHT~~ 1.0'

10.9' TO LT EDGE PAVEMENT

S.L.M. 1068+77.87

Grid: Northing: 653837.571 Easting: 1520543.575

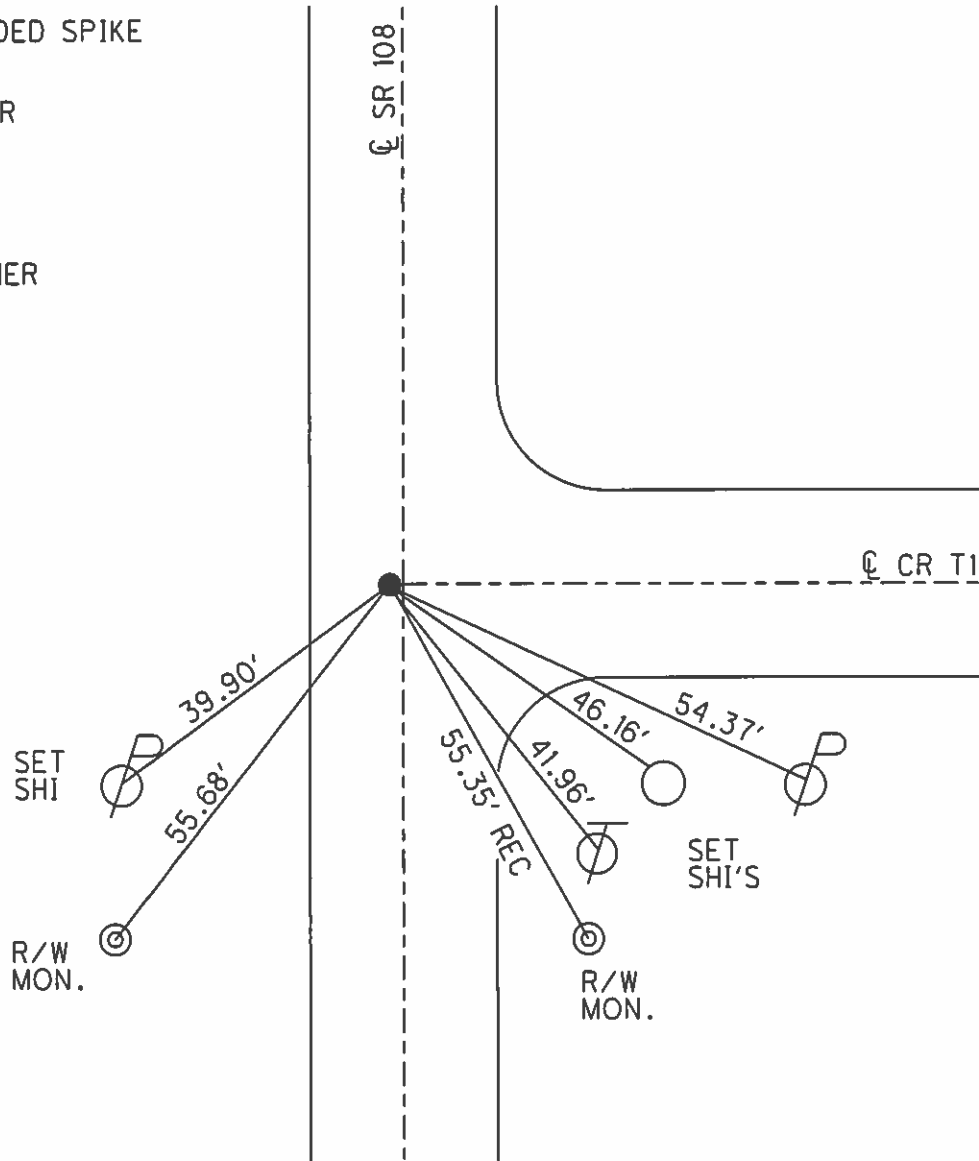


FD SM.SQ.HEADED SPIKE
8/9/94, VD

SET PK/WASHER
8/25/94, MB

FD PK/WASHER
2/6/08

SET MAG/WASHER
9/4/09, SAH



O.D.O.T. DISTRICT 2 SURVEY OFFICE

PERSONNEL

REFERENCE NO. 73

SHEET 4 OF 8

NOTES VAN DUSEN

H.C. CORDES

R.C. SLOVAK

DATE 8-9-94

WEATHER CLOUDY

TEMP. +55°F

ROUTE 108

COUNTY HENRY

TOWNSHIP FREEDOM

SECTION 25

T. 6 N. R. 6 E.

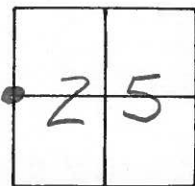
TYPE MONUMENT FD. SM. SPK. SQ. HEAD

ON SURFACE - ~~BELOW~~ YES

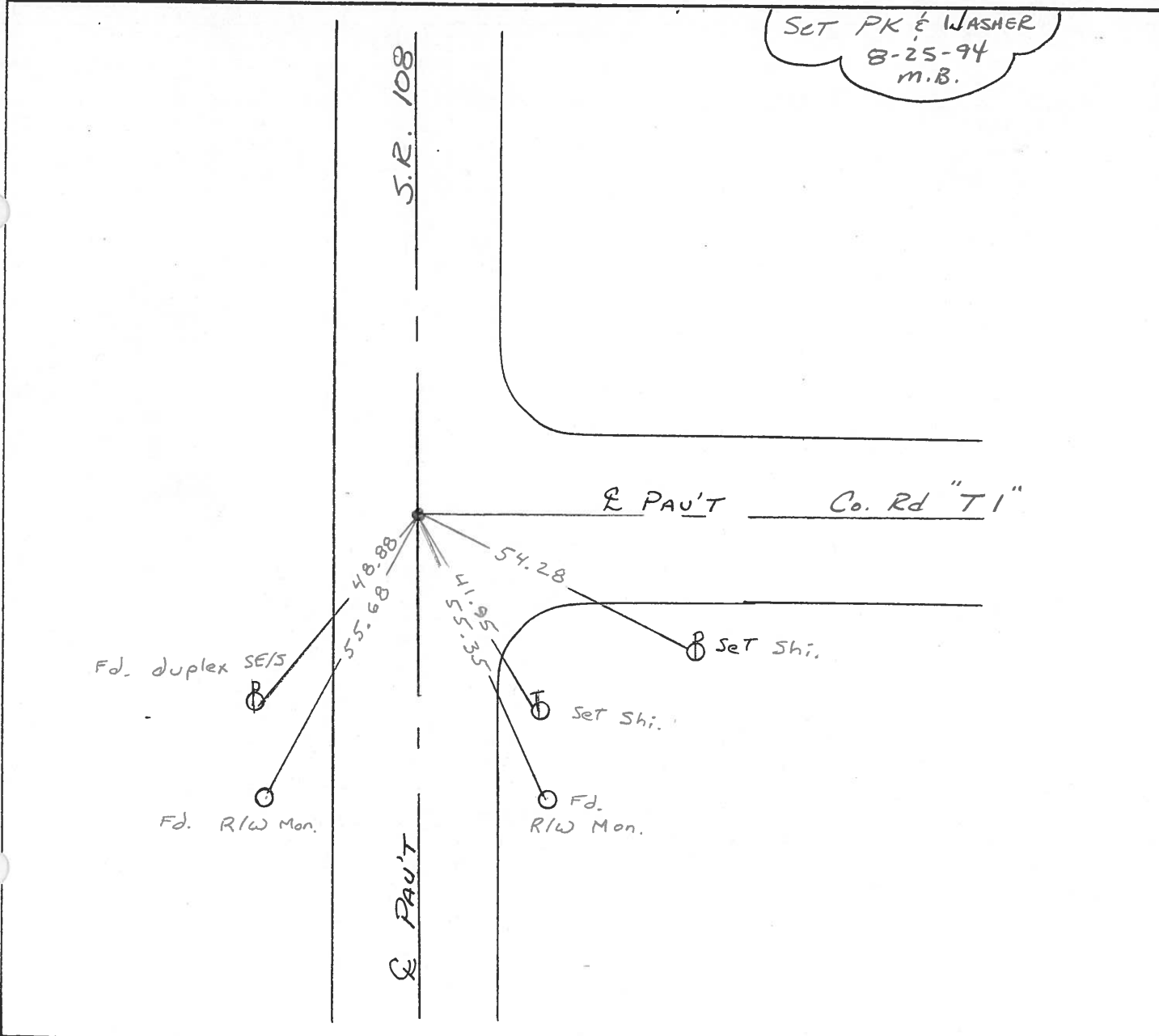
LEFT-℄ PAV'T. - ~~RIGHT~~ 0.5

10.9 TO LT. EDGE PAVEMENT

S.L.M. 1068 +14



SET PK & WASHER
8-25-94
m.B.



O.D.O.T. DISTRICT 2 SURVEY OFFICE

SHEET 4 OF

County Henry S.R. 108

Date 22 May 84

Township Freedom

Weather Cloudy

Section 25-26

Temp. 66°

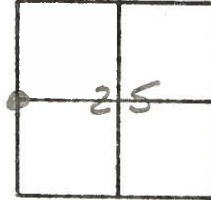
T_N, R_E

Personnel I. Stone

P. Neuser

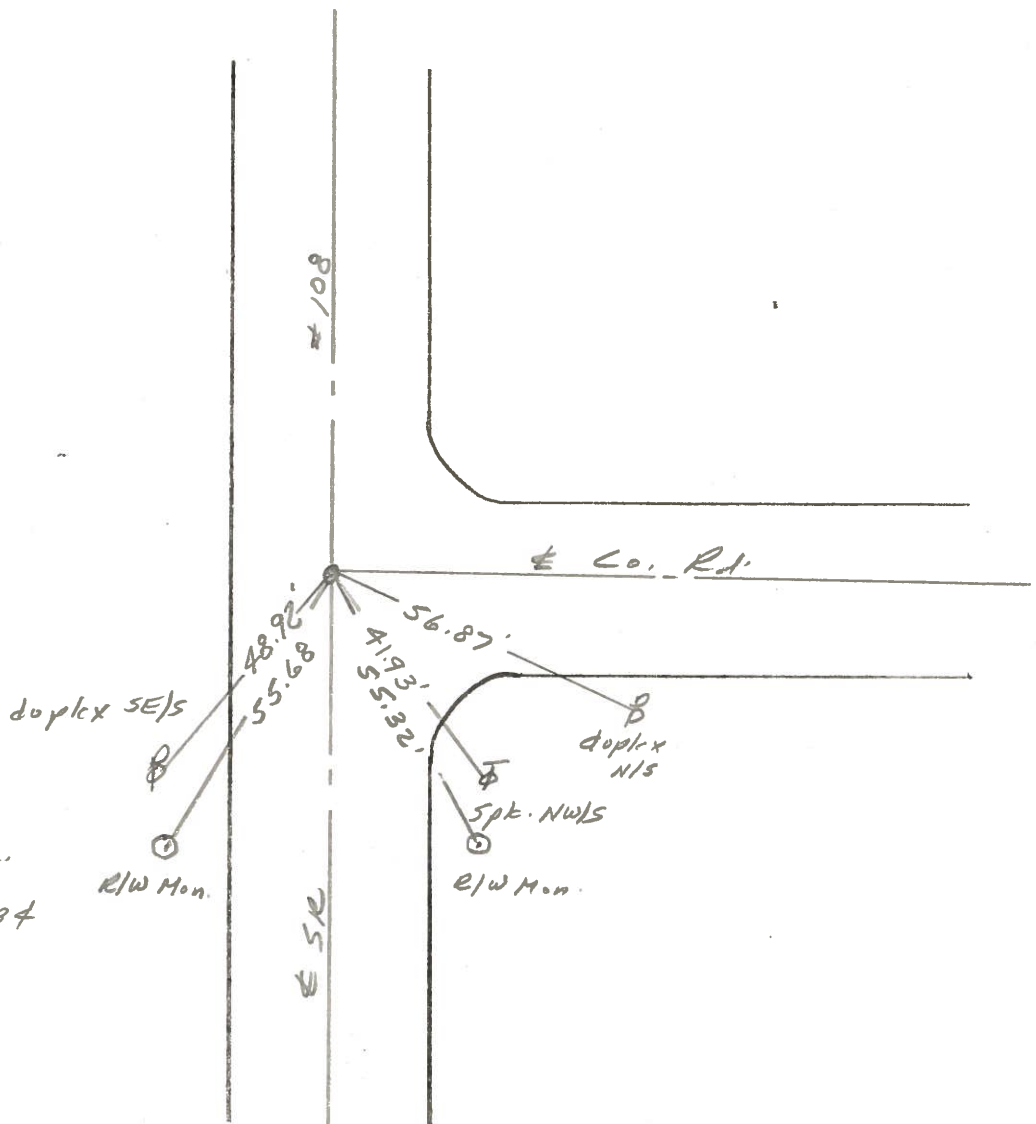
R. Michalak

D. Curtis



SLM 1076+03

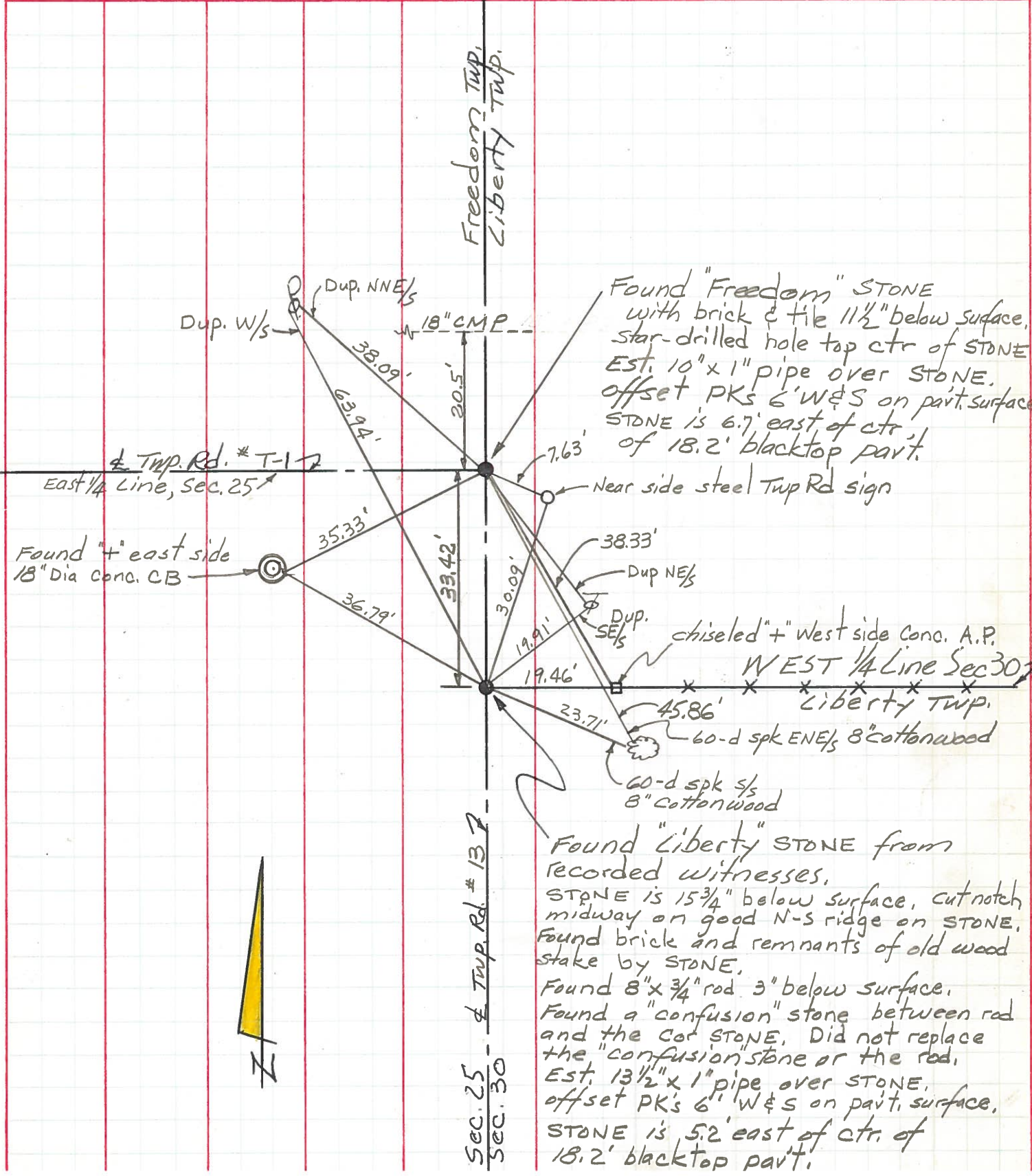
REF. NO. 73



1/4 Cor. Sec. 25-26
115' to W. edge put.
Set small spt. 10/18/84

PERSONNEL	TITLE	PERSONNEL	TITLE	COUNTY	DATE
Red Beach				HENRY	23 Aug '71
Newcomb				S. R. Adrian Pike	WEATHER
Knape				SEC. Freedom Twp.	TEMP.
Wise					

DESCRIPTION CONTROL POINTS JOB NO.



Found "Freedom" STONE with brick & tile 11 1/2" below surface, star-drilled hole top ctr of STONE. Est. 10" x 1" pipe over STONE, offset PK's 6' W&S on pav't. surface. STONE is 6.7' east of ctr. of 18.2' blacktop pav't.

Near side steel Twp Rd sign

chiseled "+" West side Cono. A.P. WEST 1/4 Line Sec 30 Liberty TWP.

60-d spk ENE 1/2 8" cottonwood

60-d spk S 1/2 8" cottonwood

Found "Liberty" STONE from recorded witnesses. STONE is 15 3/4" below surface, cut notch midway on good N-S ridge on STONE. Found brick and remnants of old wood stake by STONE. Found 8" x 3/4" rod 3" below surface. Found a "confusion" stone between rod and the Cor STONE. Did not replace the "confusion" stone or the rod. Est. 13 1/2" x 1" pipe over STONE, offset PK's 6' W&S on pav't. surface. STONE is 5.2' east of ctr. of 18.2' blacktop pav't.

Sec. 25 - East 1/4 Twp. Rd. # 137

Sec. 30

PERSONNEL TITLE PERSONNEL TITLE

Red Beach
Newcomb
Knappe
Wise

COUNTY HENRY

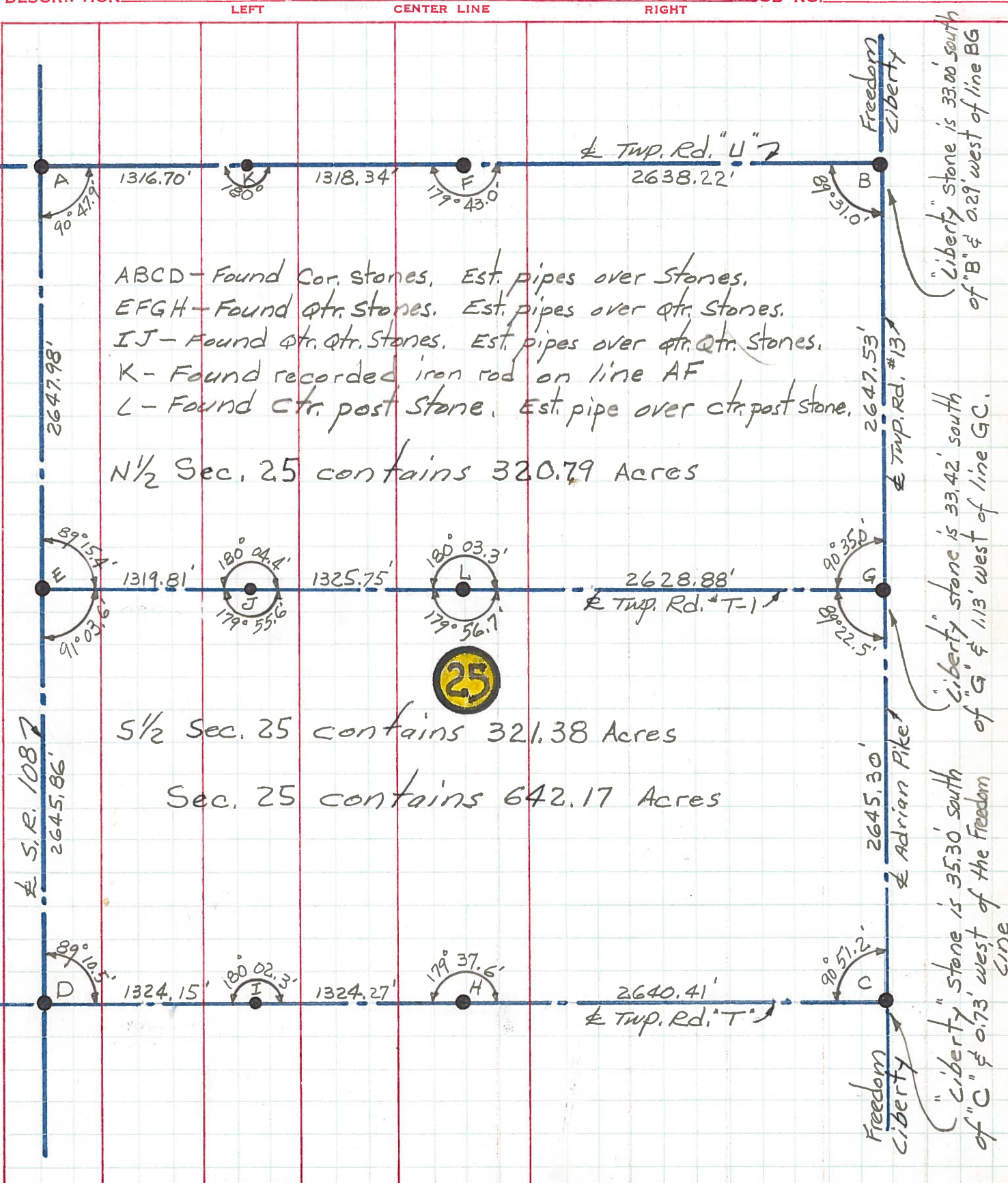
DATE Aug 1971

S. R. Freedom Twp. WEATHER

SEC. 25

TEMP.

DESCRIPTION ALIGNMENT & CONTROLS JOB NO.



ABCD - Found Cor. Stones, Est. pipes over Stones.
 EFGH - Found qtr. Stones. Est. pipes over qtr. Stones.
 IJ - Found qtr. qtr. Stones. Est. pipes over qtr. qtr. Stones.
 K - Found recorded iron rod on line AF
 L - Found ctr. post Stone, Est. pipe over ctr. post stone.

N 1/2 Sec. 25 contains 320.79 Acres

S 1/2 Sec. 25 contains 321.38 Acres

Sec. 25 contains 642.17 Acres

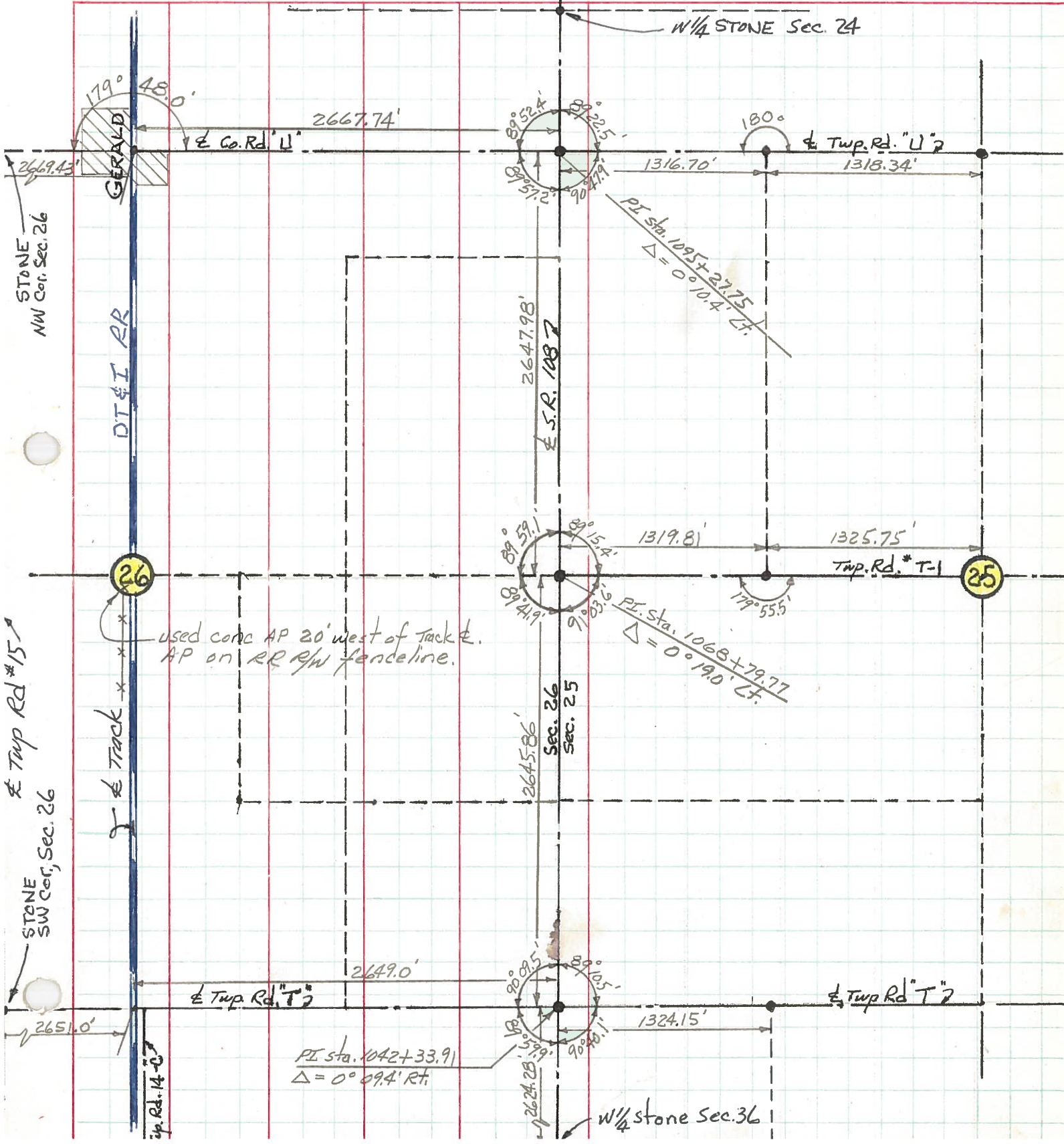
"Liberty" Stone is 33.00 south of "B" & 0.29 west of line BG

"Liberty" Stone is 33.42 south of "G" & 1.13 west of line GC.

"Liberty" Stone is 35.30 south of "C" & 0.73 west of the Freedom line

PERSONNEL TITLE PERSONNEL TITLE COUNTY HENRY DATE July 1971
Red Beach _____
Newcomb _____
Knape _____
Wise _____

DESCRIPTION ALIGNMENT & CONTROLS SEC. FREEDOM TWP. TEMP. _____
 LEFT CENTER LINE RIGHT JOB NO. _____



STONE NW Cor. Sec. 26
 STONE SW Cor. Sec. 26



26

25

used conc AP 20' west of track &
 AP on RR RW fence line.

PI Sta. 1042+33.91
 $\Delta = 0^\circ 09.4' Rt.$

PI Sta. 1095+27.25
 $\Delta = 0^\circ 10.4' Lt.$

PI Sta. 1068+79.77
 $\Delta = 0^\circ 19.0' Lt.$

STONE Sec. 24
 STONE Sec. 36

PERSONNEL Red Beach TITLE _____ PERSONNEL Newcomb TITLE _____ COUNTY HENRY DATE June 1971
 PERSONNEL Knape TITLE _____ S. R. 108 WEATHER _____
 PERSONNEL Wise TITLE _____ SEC. FREEDOM TWP. TEMP. _____

DESCRIPTION CONTROL POINTS JOB NO. _____

