

O.D.O.T. DISTRICT 2 SURVEY OFFICE (USE ONLY)

PERSONNEL _____

REFERENCE NO. 75

SHEET 18 OF 21

NOTES AUBLE

DATE 3/28/18

ROUTE SR 108

H.C. LEU

WEATHER CLOUDY

COUNTY HENRY

R.C. AUBLE

TEMP. 42°F

TOWNSHIP FREEDOM

DWG BY NIESE PID 101211

SECTION 23

T 6 N R 6 E

TYPE MONUMENT MAG NAIL

ON SURFACE - ~~BELOW~~ ON

OFFSET Q PAVEMENT ON LT : RT

11.5' TO LT EDGE PAVEMENT

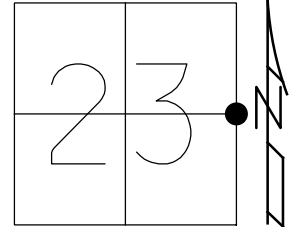
STATION: 1121+72.05

HORZ.DATUM: NAD83(2011)

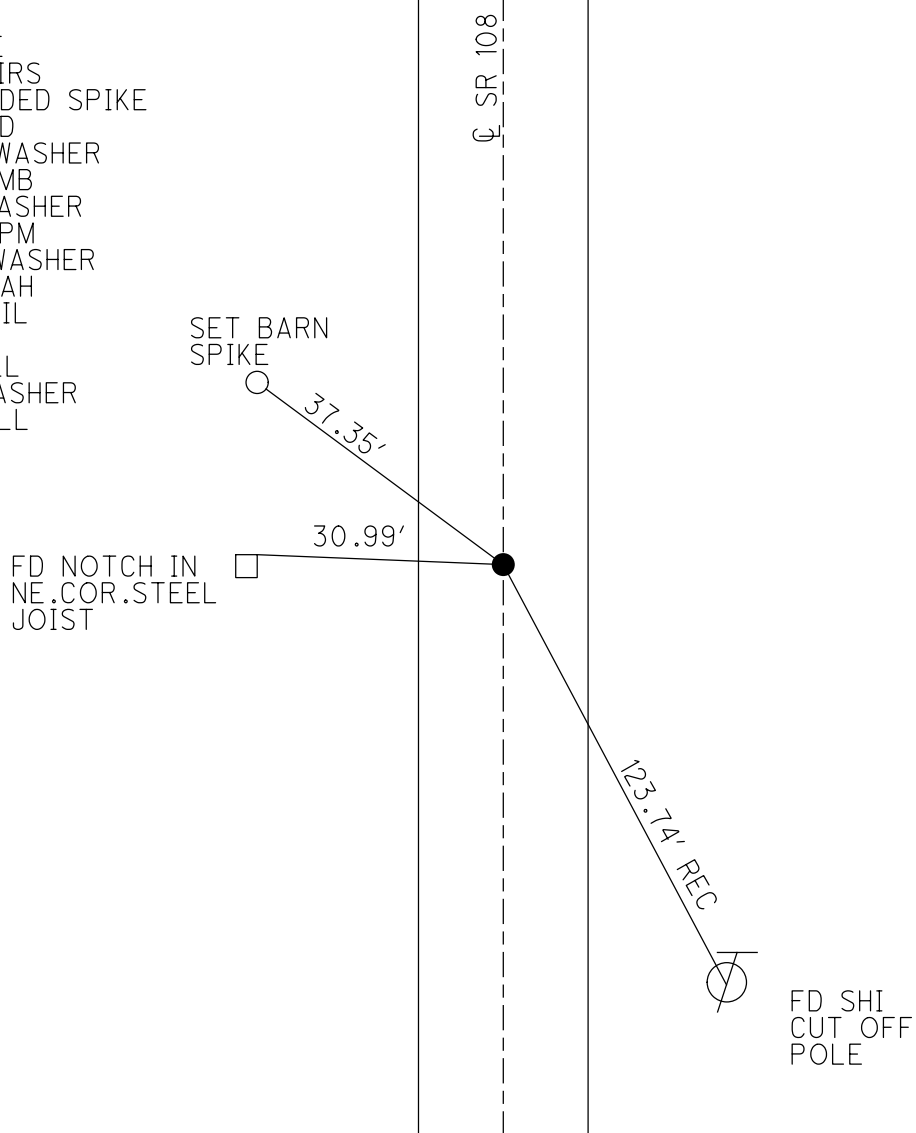
GEOID: 2012A

GRID: NORTHING: 659130.847

EASTING: 1520644.656



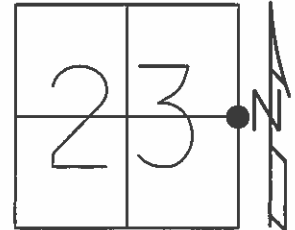
- RECORD:
 FD 1" IPIPE
 5/22/84, IRS
 FD SQ.HEADED SPIKE
 8/9/94, VD
 SET P.K./WASHER
 8/25/94, MB
 FD P.K./WASHER
 2/6/08, KPM
 SET MAG/WASHER
 9/4/09, SAH
 FD MAG NAIL
 REF75
 4/4/19, JLL
 FD MAG/WASHER
 9/17/19, JLL



O.D.O.T. DISTRICT 2 SURVEY OFFICE (USE ONLY)

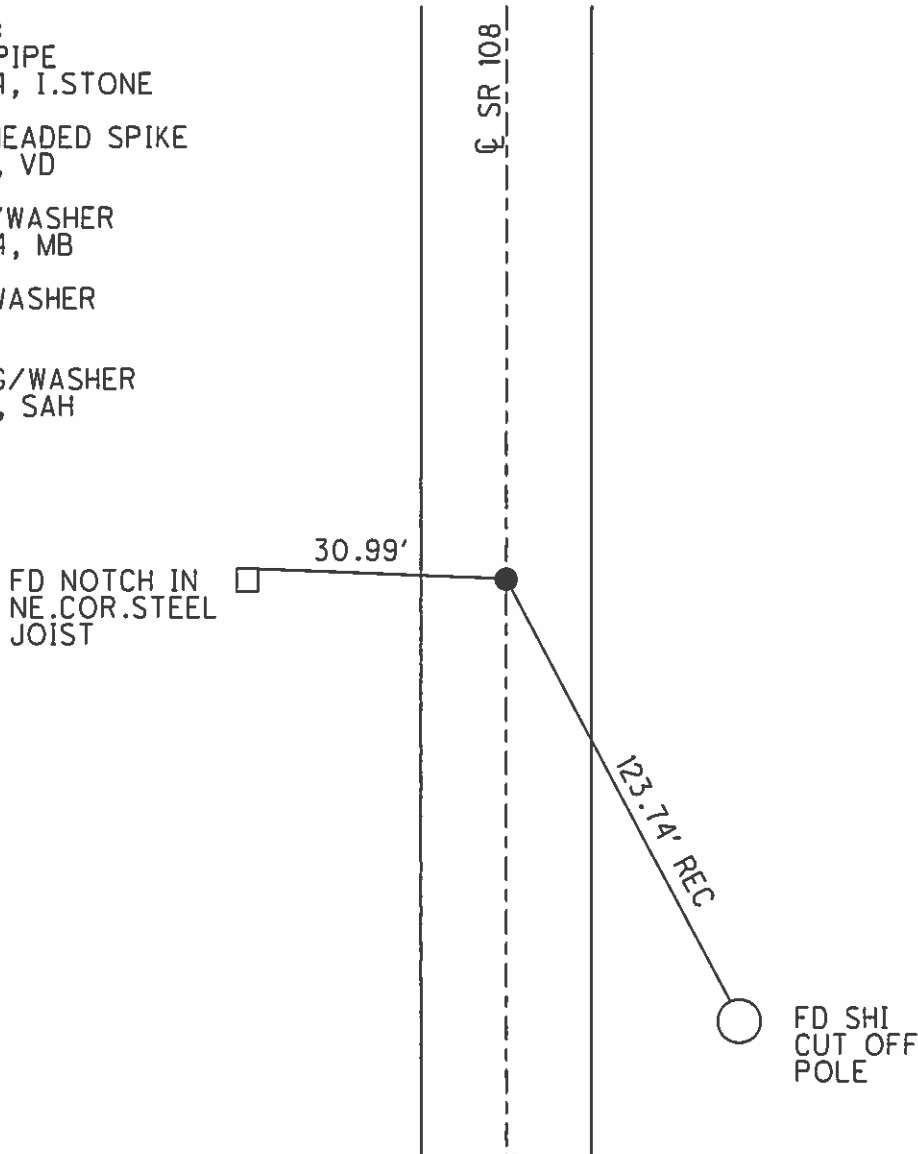
PERSONNEL _____ REFERENCE NO. 75 SHEET 18 OF 21
NOTES HUSS DATE 4/16/09 ROUTE SR 108
H.C. CORDES WEATHER CLEAR COUNTY HENRY
R.C. CORY TEMP. 52° TOWNSHIP FREEDOM
SECTION 23
T 6 N R 6 E

TYPE MONUMENT P.K./WASHER
ON SURFACE - ~~BELOW~~ ON
LEFT - Q PAV'T - RIGHT ON
11.5' TO LT EDGE PAVEMENT
S.L.M. 1121+72.05



Grid: Northing: 659130.787 Easting: 1520644.640

- RECORD:
FD. 1" IPIPE
5/22/84, I.STONE
- FD SQ.HEADED SPIKE
8/9/94, VD
- SET PK/WASHER
8/25/94, MB
- FD PK/WASHER
2/6/08
- SET MAG/WASHER
9/4/09, SAH



O.D.O.T. DISTRICT 2 SURVEY OFFICE

PERSONNEL _____

REFERENCE NO. 75

SHEET 6 OF 8

NOTES VAN DUSEN

H.C. CORDES

R.C. SLOVAK

DATE 8-9-94

WEATHER CLOUDY

TEMP. +55°F

ROUTE 108

COUNTY HENRY

TOWNSHIP FREEDOM

SECTION 24

T 6 N R 6 E

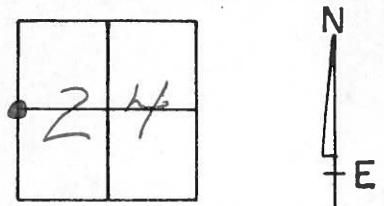
TYPE MONUMENT FD SQ. HEAD SPK.

ON SURFACE - ~~BELOW~~ yes

~~LEFT - & PAV'T. - RIGHT~~ YES

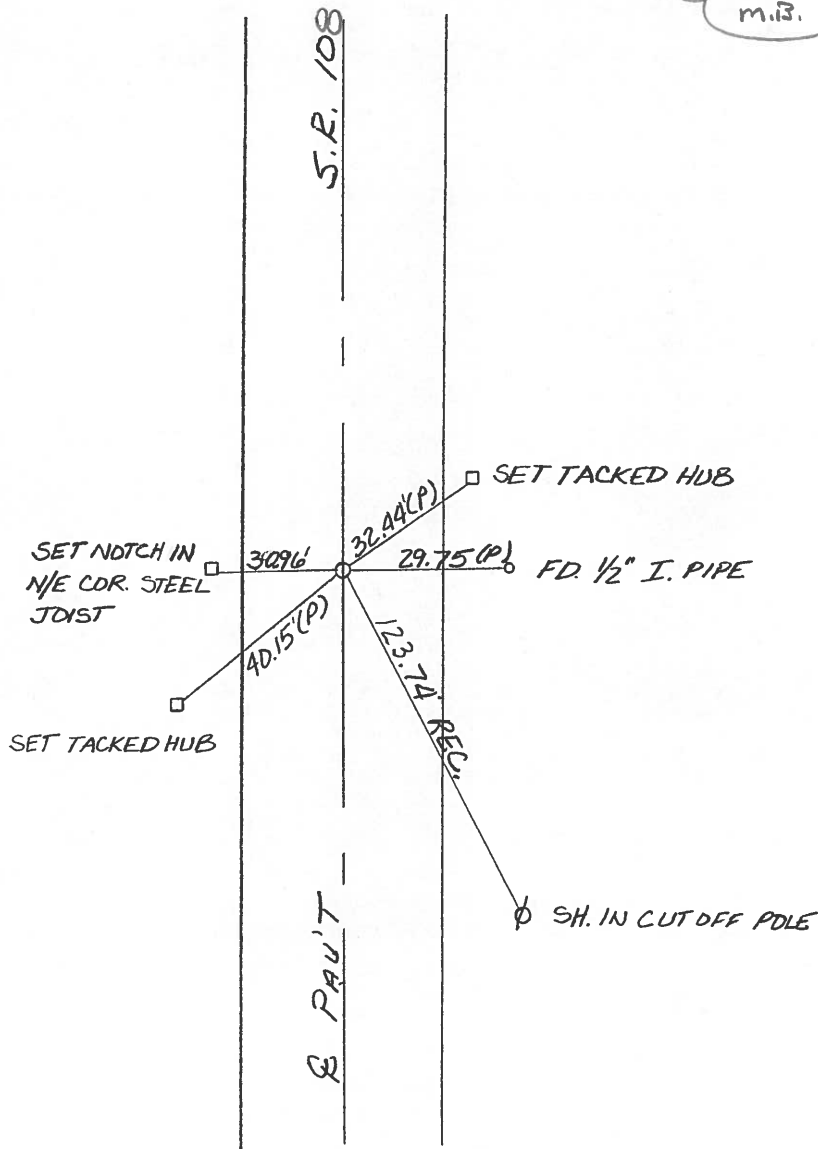
11.5' TO LT. EDGE PAVEMENT

S.L.M. 1121+10



RECORD:
Fd 1" I-PIPE
5-22-84
I. STONE

SET P.K. & WASHER
8-25-94
M.B.



Q.D.O.T. DISTRICT 2 SURVEY OFFICE

SHEET 6 OF

County Henry S.R. 108

Date 22 May 84

Township Freedom

Weather Cloudy

Section 23-24

Temp. 68°

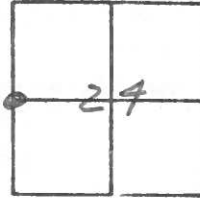
T N, R E

Personnel I. Stone

P. Heuser

R. Michalak

D. Curtis

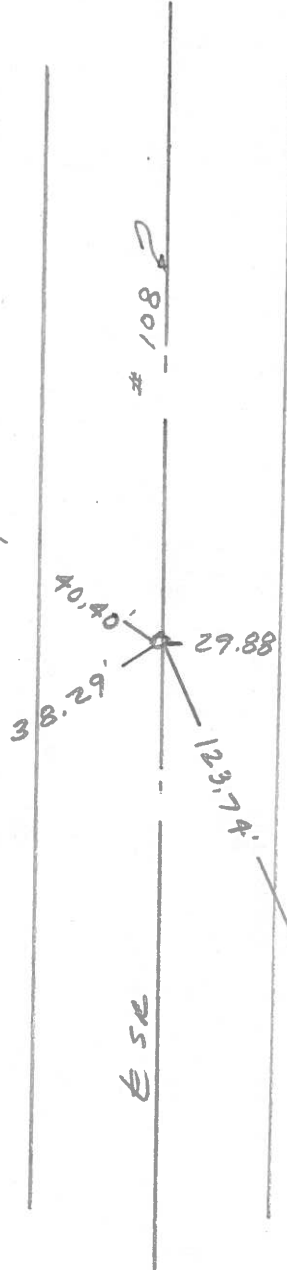


SLM 1128+98.5

REF. NO. 75



Hub & Nail



Fd. 1/2" I. pipe

Hub & Nail

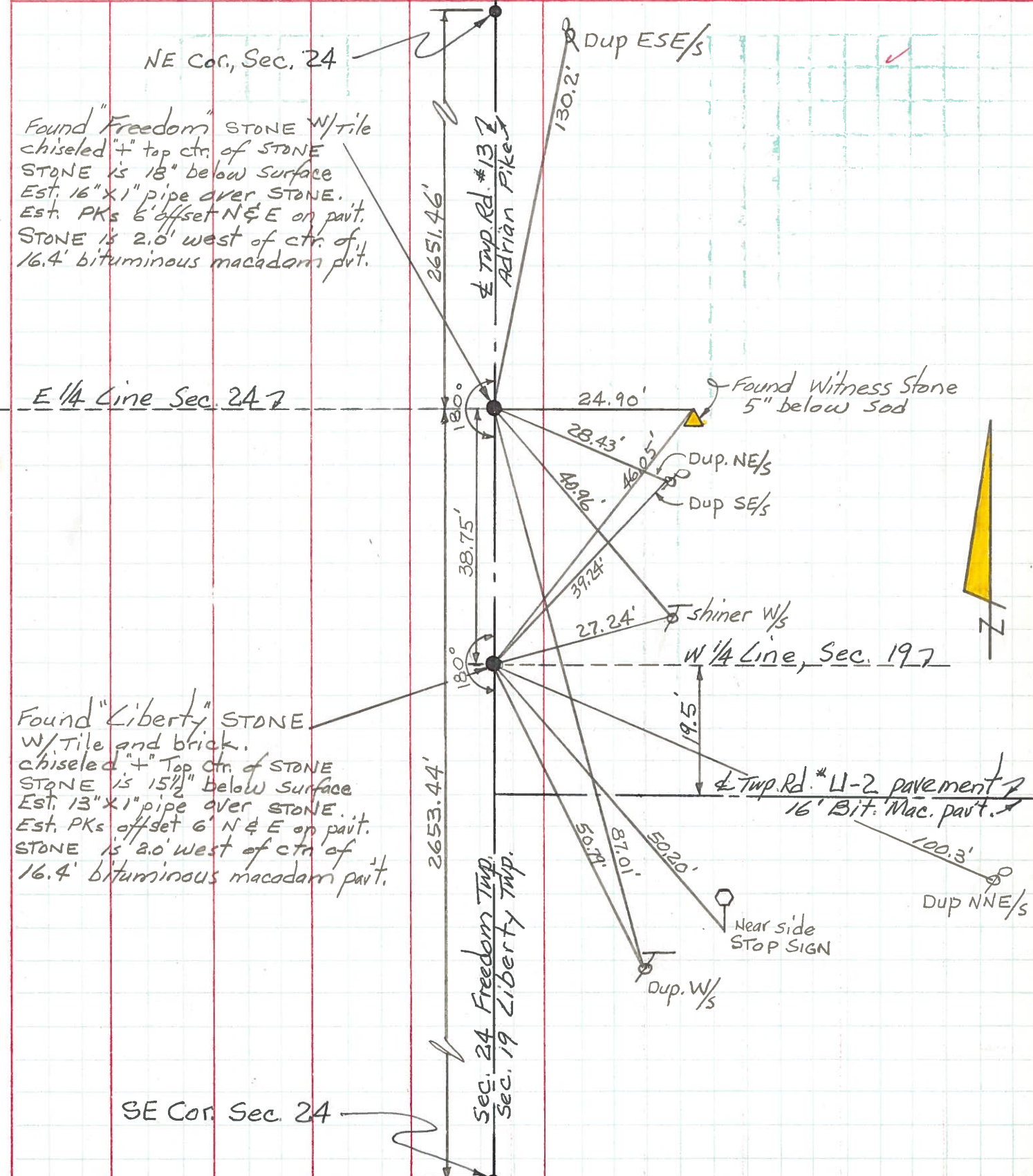


1/4 Cor. Sec. 23-24
 Fd 1" I. pipe
 12.4' to E. edge put.
 12.0' to W. edge put.
 Set Small spk 10/18/84

Shim in cut off pole

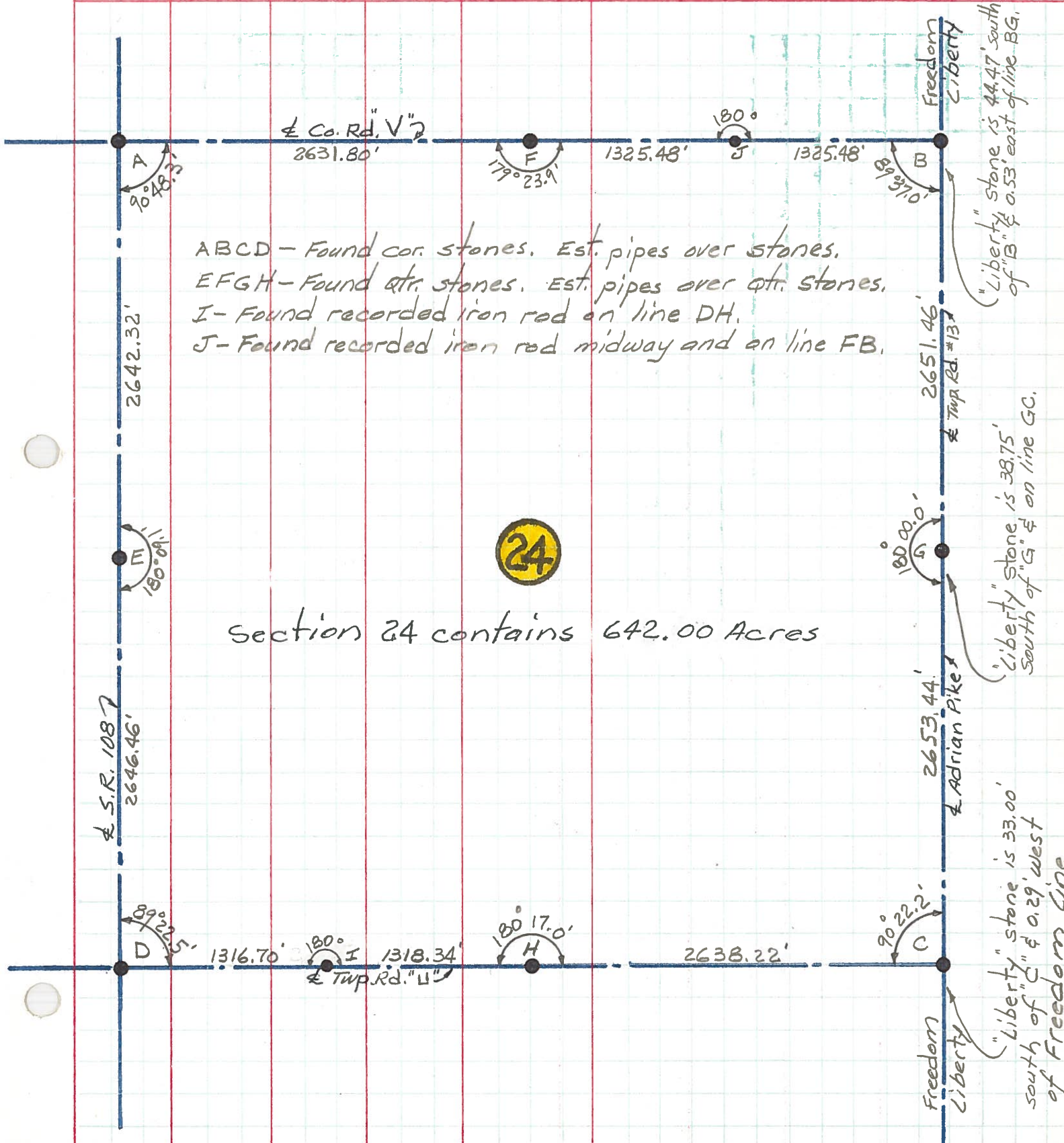
PERSONNEL Red Beach TITLE _____ PERSONNEL Newcomb TITLE _____ COUNTY HENRY DATE 17 Aug 1971
 PERSONNEL Knape TITLE _____ S. R. ADRIAN PIKE WEATHER _____
 SEC. Freedom Twp. TEMP. _____

DESCRIPTION CONTROL POINTS JOB NO. _____



PERSONNEL TITLE PERSONNEL TITLE COUNTY HENRY DATE Aug 1971
 Red Beach, Newcomb, Knape, Wise S. R. Freedom Twp. WEATHER
 SEC. 24 TEMP.

DESCRIPTION ALIGNMENT & CONTROLS JOB NO.
 LEFT CENTER LINE RIGHT



PERSONNEL TITLE PERSONNEL TITLE

Red Beach
Newcomb
Knappe
Wise

COUNTY HENRY

DATE July 1971

S. R. 108

WEATHER

SEC. FREEDOM TWP

TEMP.

DESCRIPTION

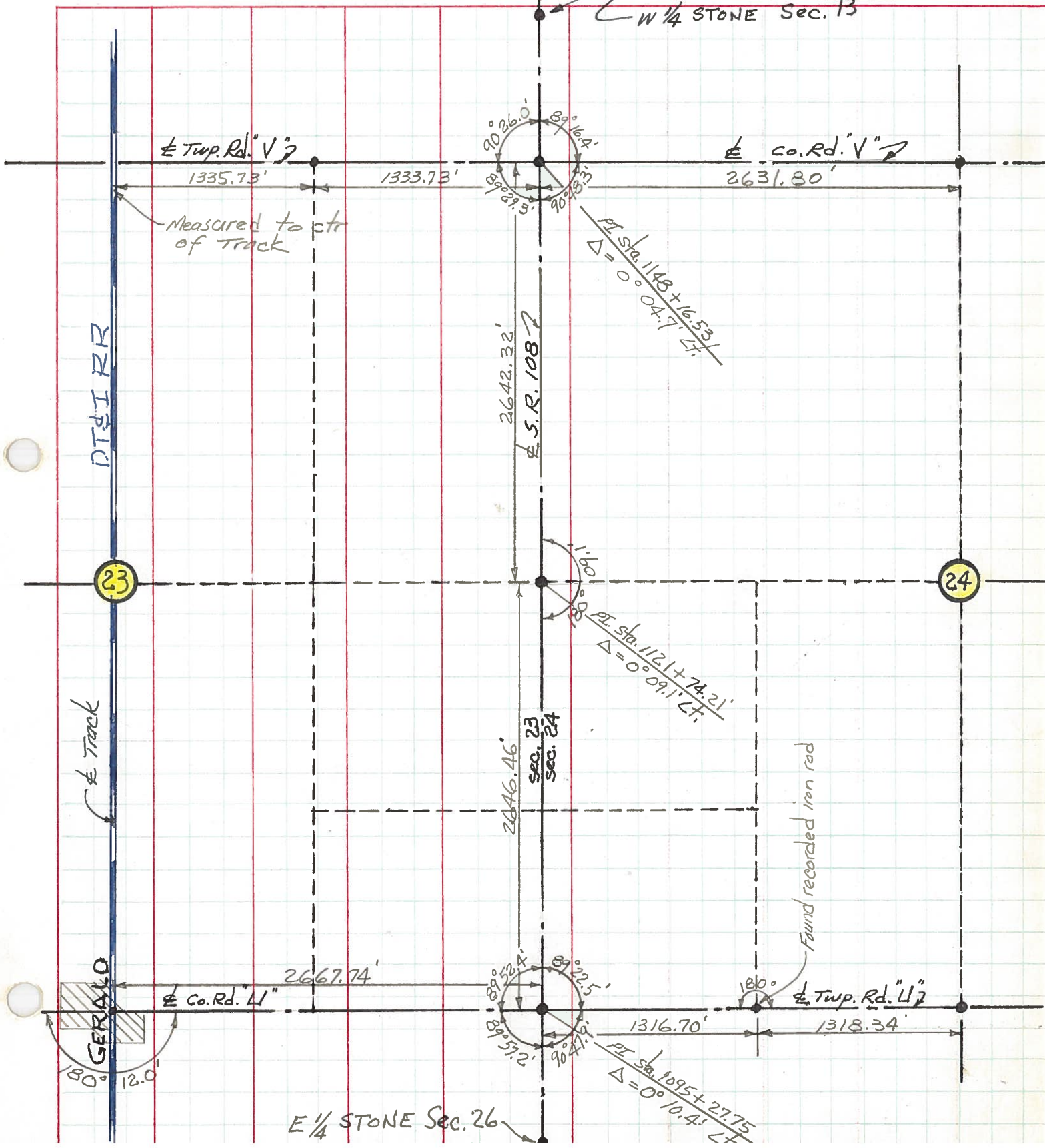
ALIGNMENT & CONTROLS

JOB NO.

LEFT

CENTER LINE

RIGHT



PERSONNEL TITLE PERSONNEL TITLE
 Red Beach
 Newcomb
 Knape
 Wise

COUNTY HENRY DATE June 1971
 S. R. 108 WEATHER
 SEC. Freedom Twp TEMP.

DESCRIPTION CONTROL POINTS JOB NO.

