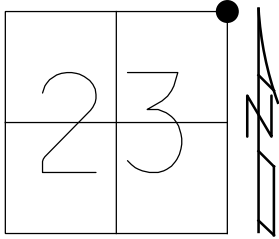


O.D.O.T. DISTRICT 2 SURVEY OFFICE (USE ONLY)

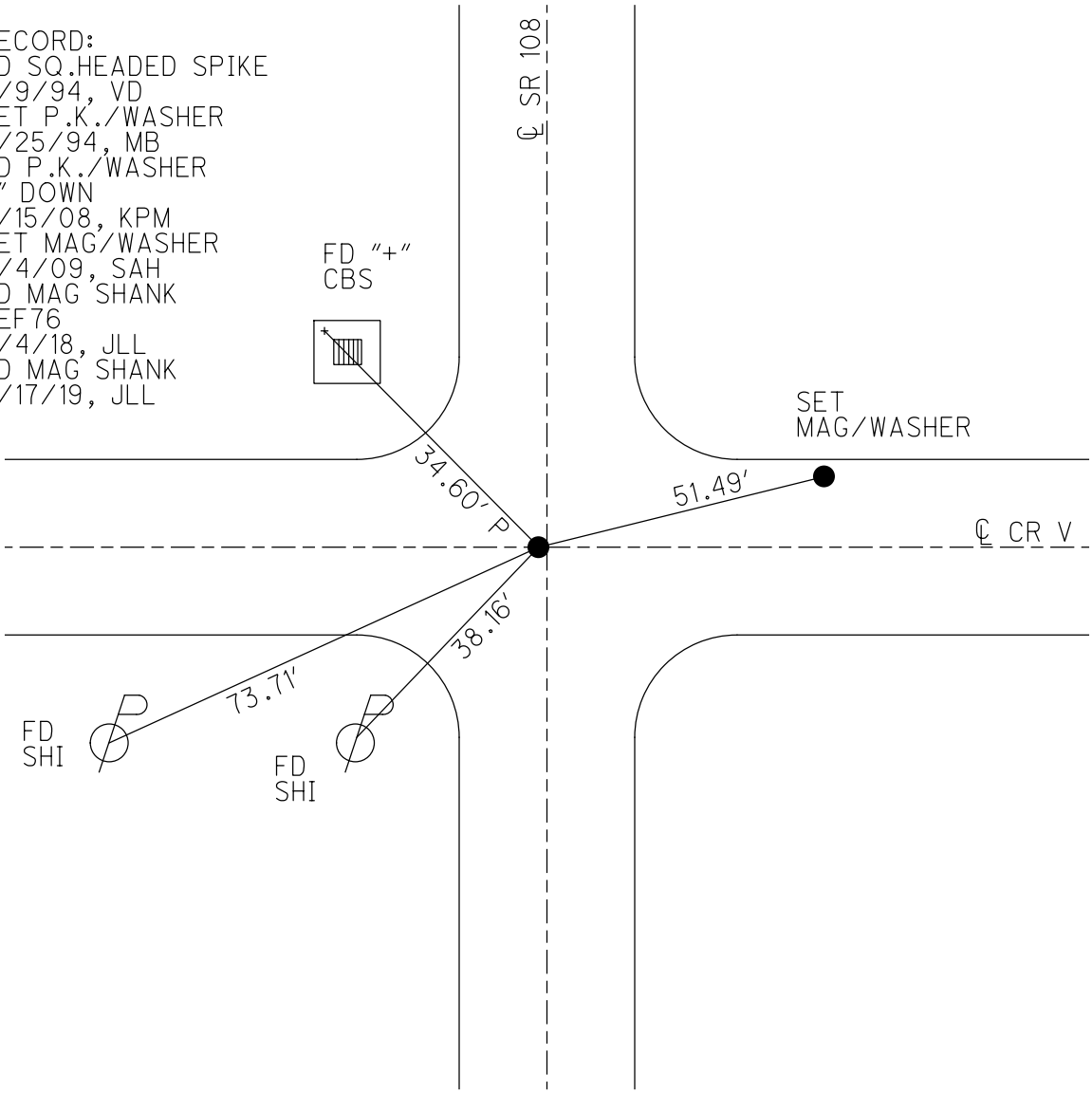
PERSONNEL _____ REFERENCE NO. 76 SHEET 19 OF 21
 NOTES AUBLE DATE 4/02/18 ROUTE SR 108
 H.C. LEU WEATHER CLEAR COUNTY HENRY
 R.C. AUBLE TEMP. 34°F TOWNSHIP FREEDOM
 DWG BY NIESE PID 101211 SECTION 23
 T 6 N R 6 E

TYPE MONUMENT MAG SHANK
 ON SURFACE - ~~BELOW~~ ON
 OFFSET 0.7' LT : ~~RT~~
10.7' TO LT EDGE PAVEMENT
 STATION: 1148+14.31



HORZ. DATUM: NAD83(2011) GEOID: 2012A
 GRID: NORTHING: 661772.822 EASTING: 1520683.721

- RECORD:
 FD SQ. HEADED SPIKE
 8/9/94, VD
 SET P.K./WASHER
 8/25/94, MB
 FD P.K./WASHER
 2" DOWN
 2/15/08, KPM
 SET MAG/WASHER
 9/4/09, SAH
 FD MAG SHANK
 REF 76
 4/4/18, JLL
 FD MAG SHANK
 9/17/19, JLL



O.D.O.T. DISTRICT 2 SURVEY OFFICE (USE ONLY)

PERSONNEL _____

REFERENCE NO. 76

SHEET 19 OF 21

NOTES HUSS

DATE 4/16/09

ROUTE SR 108

H.C. CORDES

WEATHER CLEAR

COUNTY HENRY

R.C. CORY

TEMP. 53°

TOWNSHIP FREEDOM

SECTION 23

T 6 N R 6 E

TYPE MONUMENT P.K./WASHER

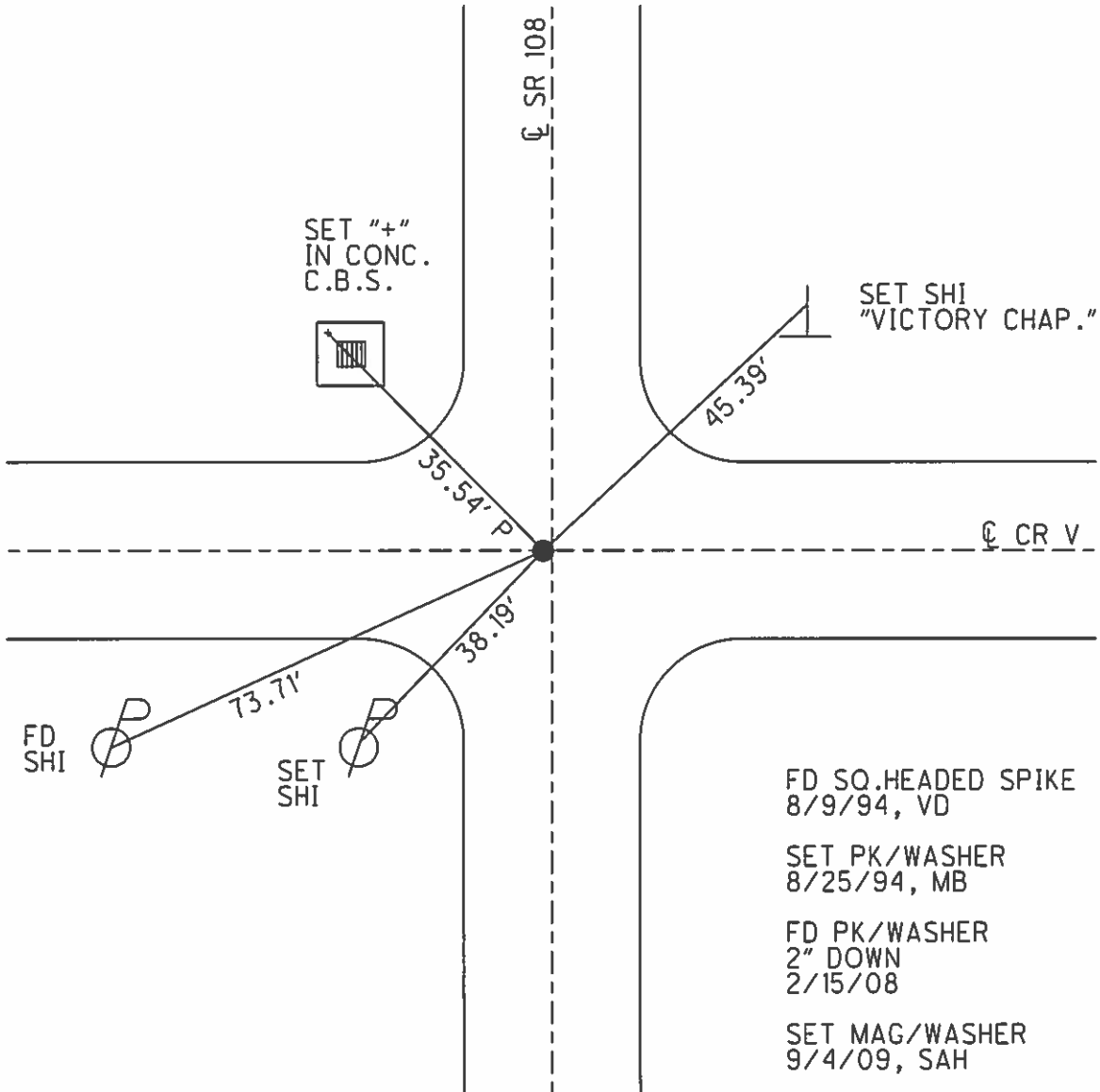
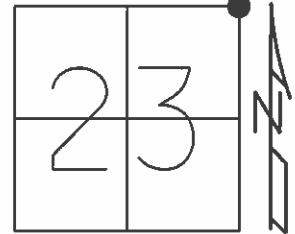
ON SURFACE - ~~BELOW~~ ON

LEFT - Q PAV'T - ~~RIGHT~~ 0.7'

10.7' TO LT EDGE PAVEMENT

S.L.M. 1148+14.31

Grid: Northing: 661772.753 Easting: 1520683.706



- FD SQ. HEADED SPIKE
8/9/94, VD
- SET PK/WASHER
8/25/94, MB
- FD PK/WASHER
2" DOWN
2/15/08
- SET MAG/WASHER
9/4/09, SAH

O.D.O.T. DISTRICT 2 SURVEY OFFICE

PERSONNEL

REFERENCE NO. 76

SHEET 7 OF 8

NOTES VAN DUSEN

H.C. CARDES

R.C. SCOVAK

DATE 8-9-94

WEATHER CLOUDY

TEMP. +55° F

ROUTE 108

COUNTY HENRY

TOWNSHIP FREEDOM

SECTION 24

T 6 NR 6 E

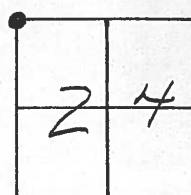
TYPE MONUMENT SQUARE HEAD SPIK

ON SURFACE - ~~BELOW~~ YES

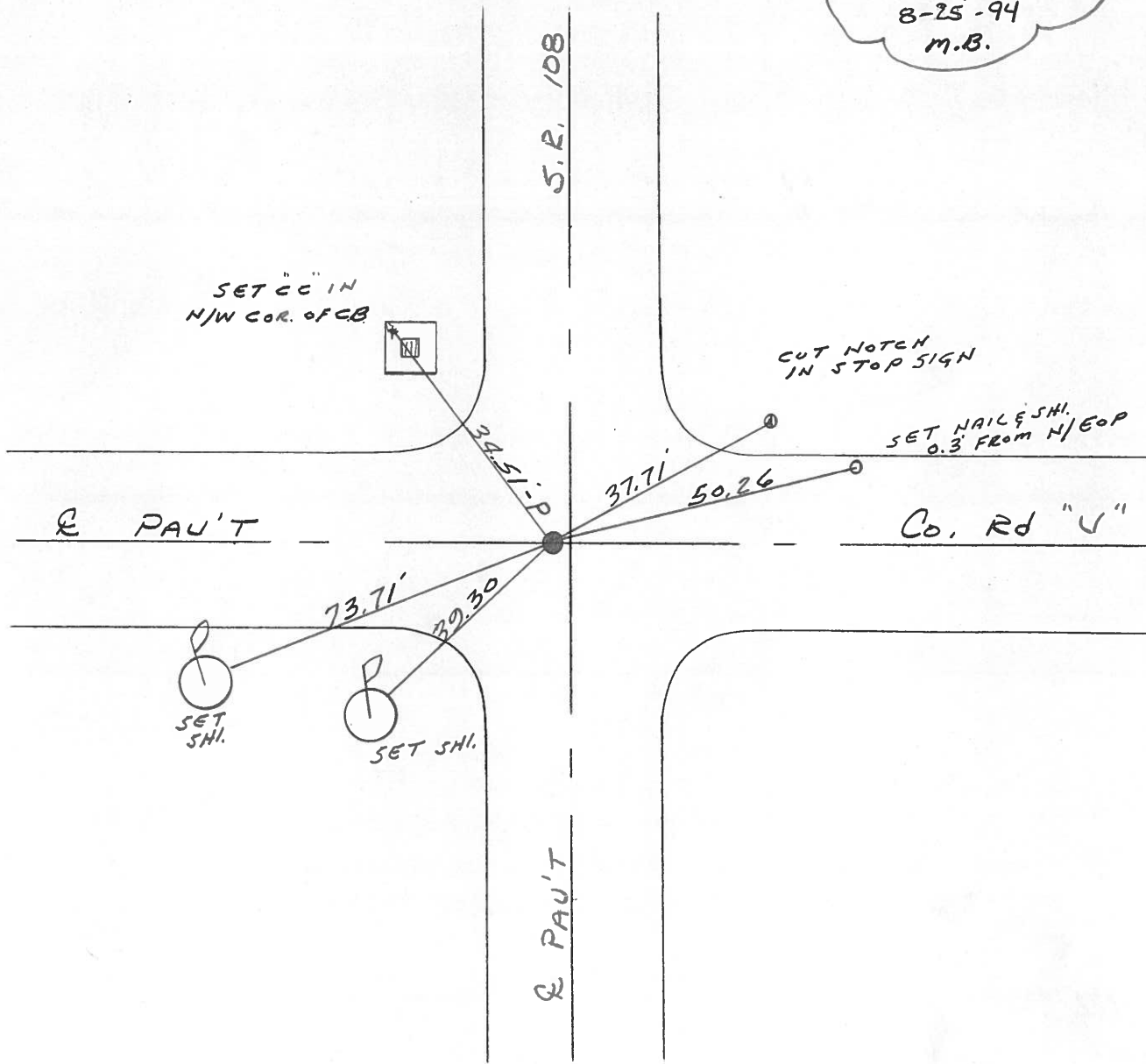
LEFT- & PAV'T. - ~~RIGHT~~ 0.7

10.2 TO LT. EDGE PAVEMENT

S.L.M. 1147+54



Set PK & WASHER
8-25-94
M.B.



Q.D.O.T. DISTRICT 2 SURVEY OFFICE

SHEET 7 OF

County Henry S.R. 108

Date 23 May 84

Township Freedom

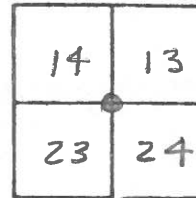
Weather Fair

Section 13-14-23-24

Temp. 65°

T N, R E

Personnel I. Stone



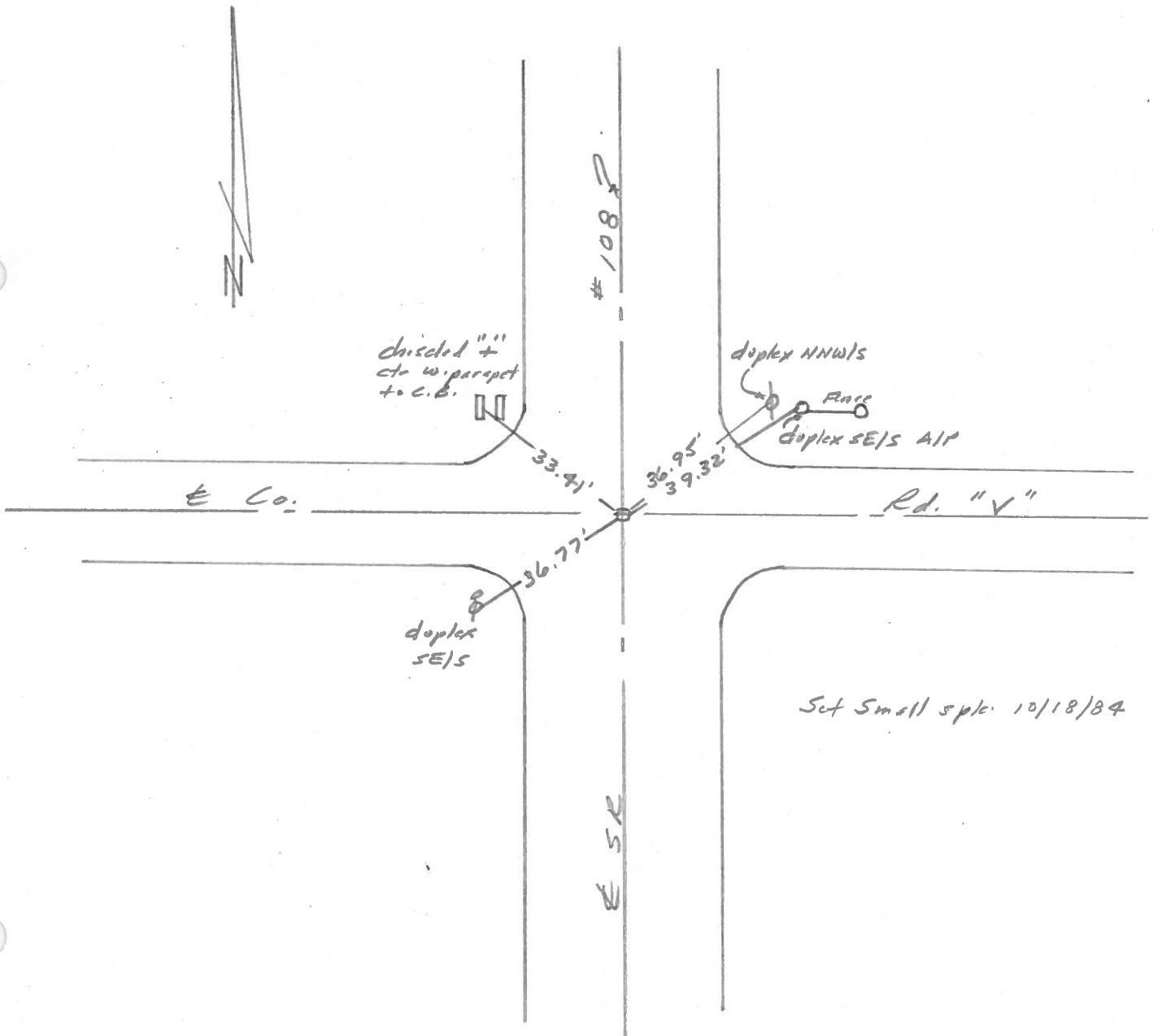
P. Newser

R. Michalak

D. Curtis

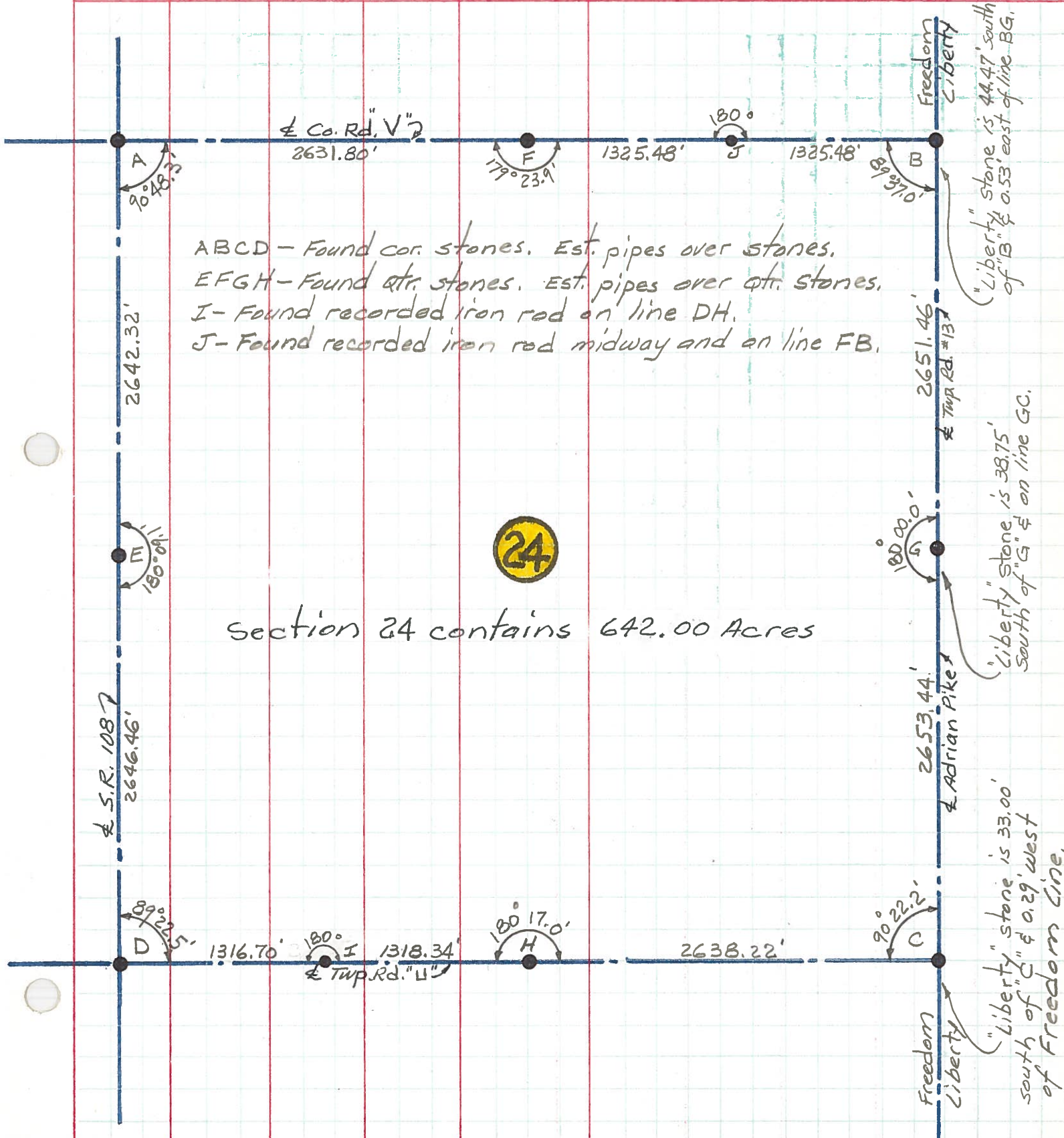
SLM 1155 + 40

REF. NO. 76



PERSONNEL TITLE PERSONNEL TITLE COUNTY HENRY DATE Aug 1971
 Red Beach, Newcomb, Knape, Wise S. R. Freedom Twp. WEATHER
 SEC. 24 TEMP.

DESCRIPTION ALIGNMENT & CONTROLS JOB NO.
 LEFT CENTER LINE RIGHT



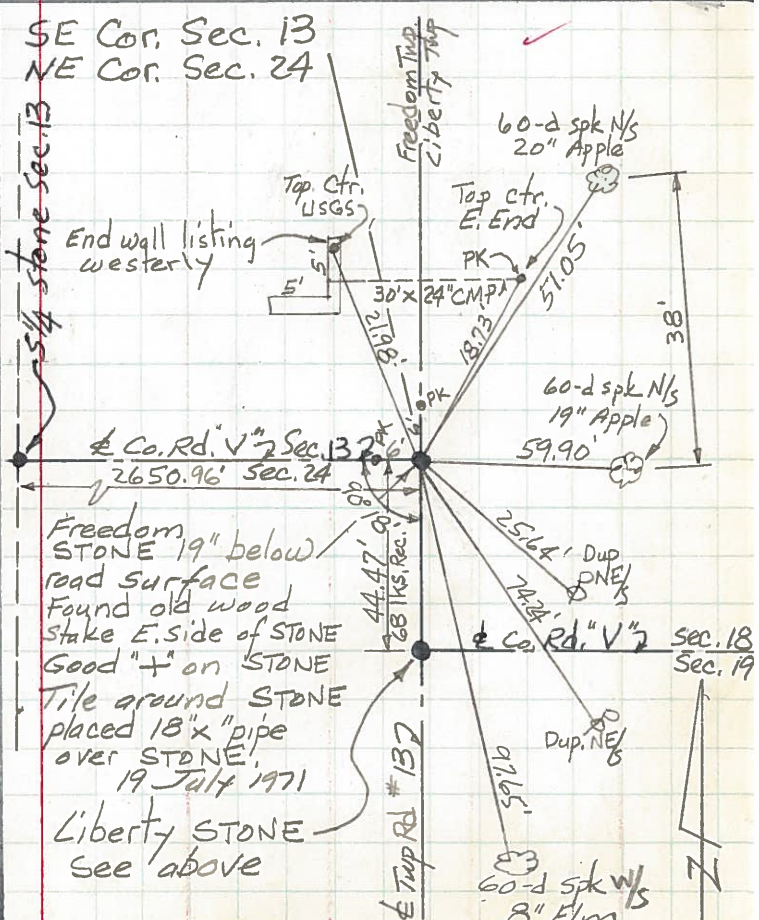
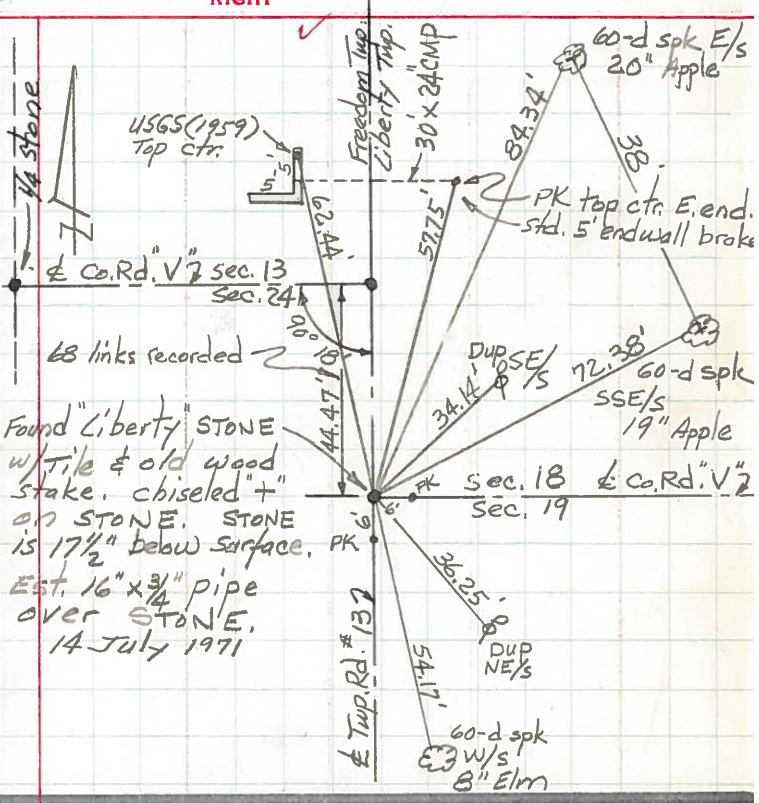
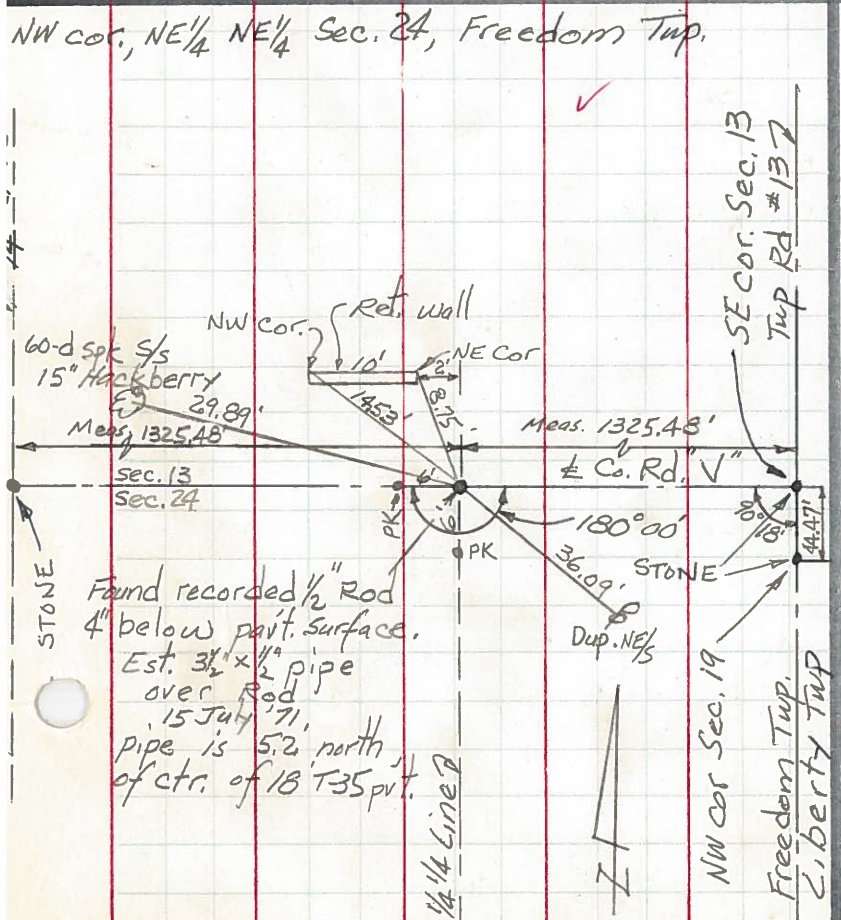
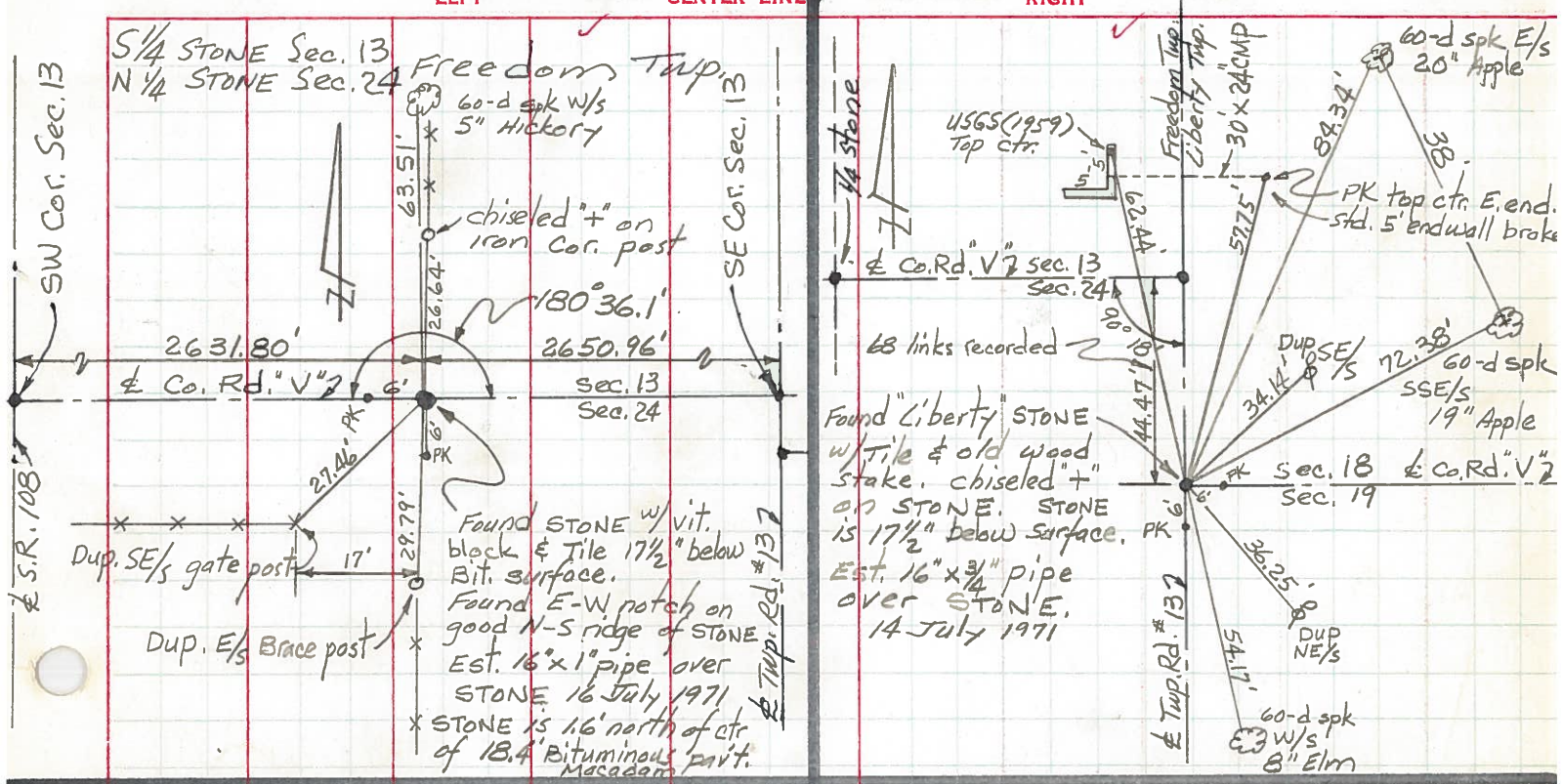
PERSONNEL TITLE PERSONNEL TITLE COUNTY HENRY DATE July 1971

Red Beach
Newcomb
Knappe
Wise

S. R. 108 WEATHER

SEC. Freedom Twp. TEMP.

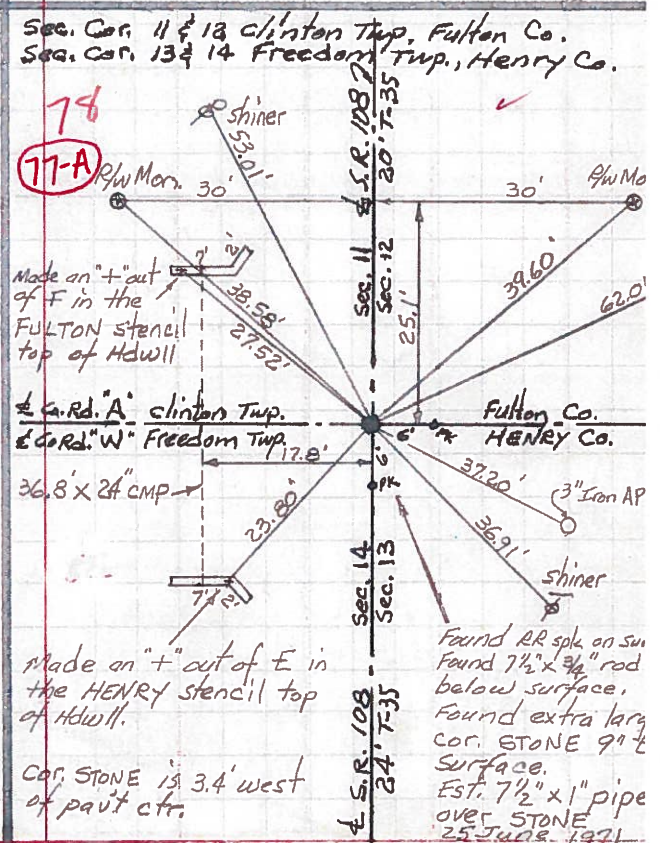
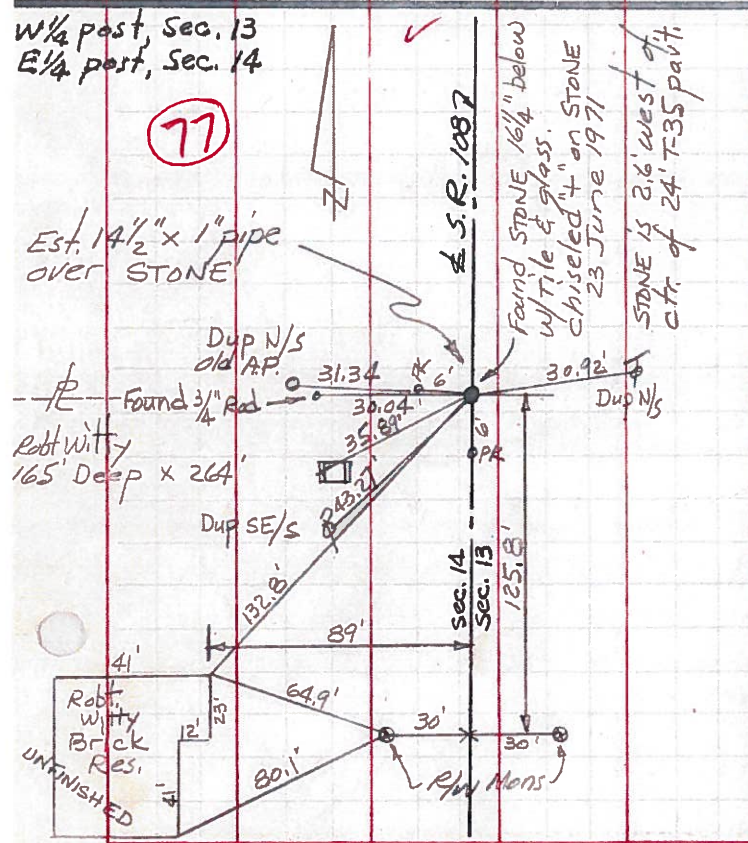
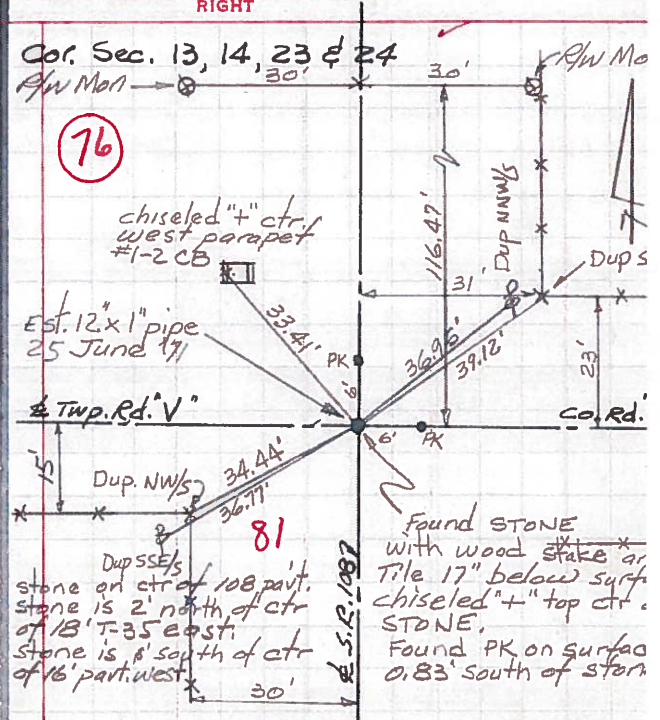
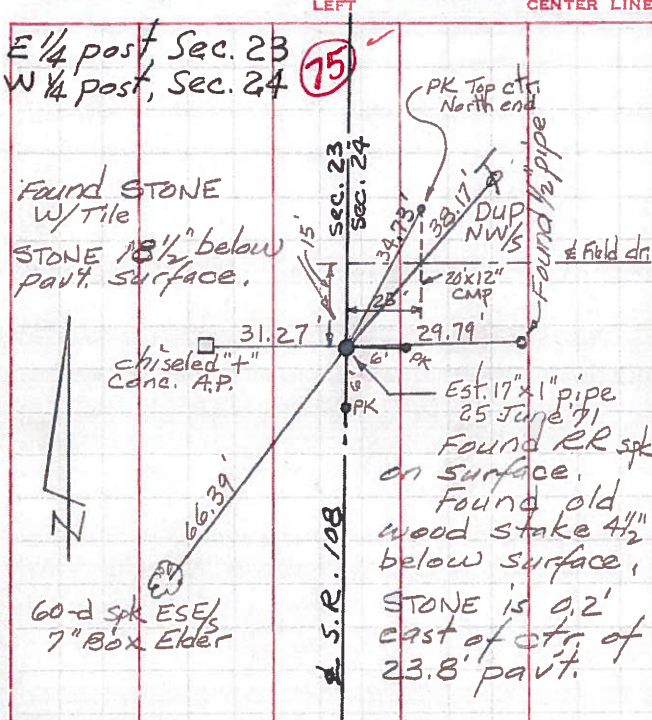
DESCRIPTION CONTROL POINTS JOB NO.



PERSONNEL TITLE PERSONNEL TITLE
 Red Beach _____
 Newcomb _____
 Knape _____
 Wise _____

COUNTY HENRY DATE June 1971
 S. R. 108 WEATHER _____
 SEC. Freedom Twp TEMP. _____

DESCRIPTION CONTROL POINTS JOB NO.



PERSONNEL TITLE PERSONNEL TITLE

Red Beach
Newcomb
Knappe
Wise

COUNTY HENRY

DATE July 1971

S. R. 108

WEATHER

SEC. FREEDOM TWP

TEMP.

DESCRIPTION

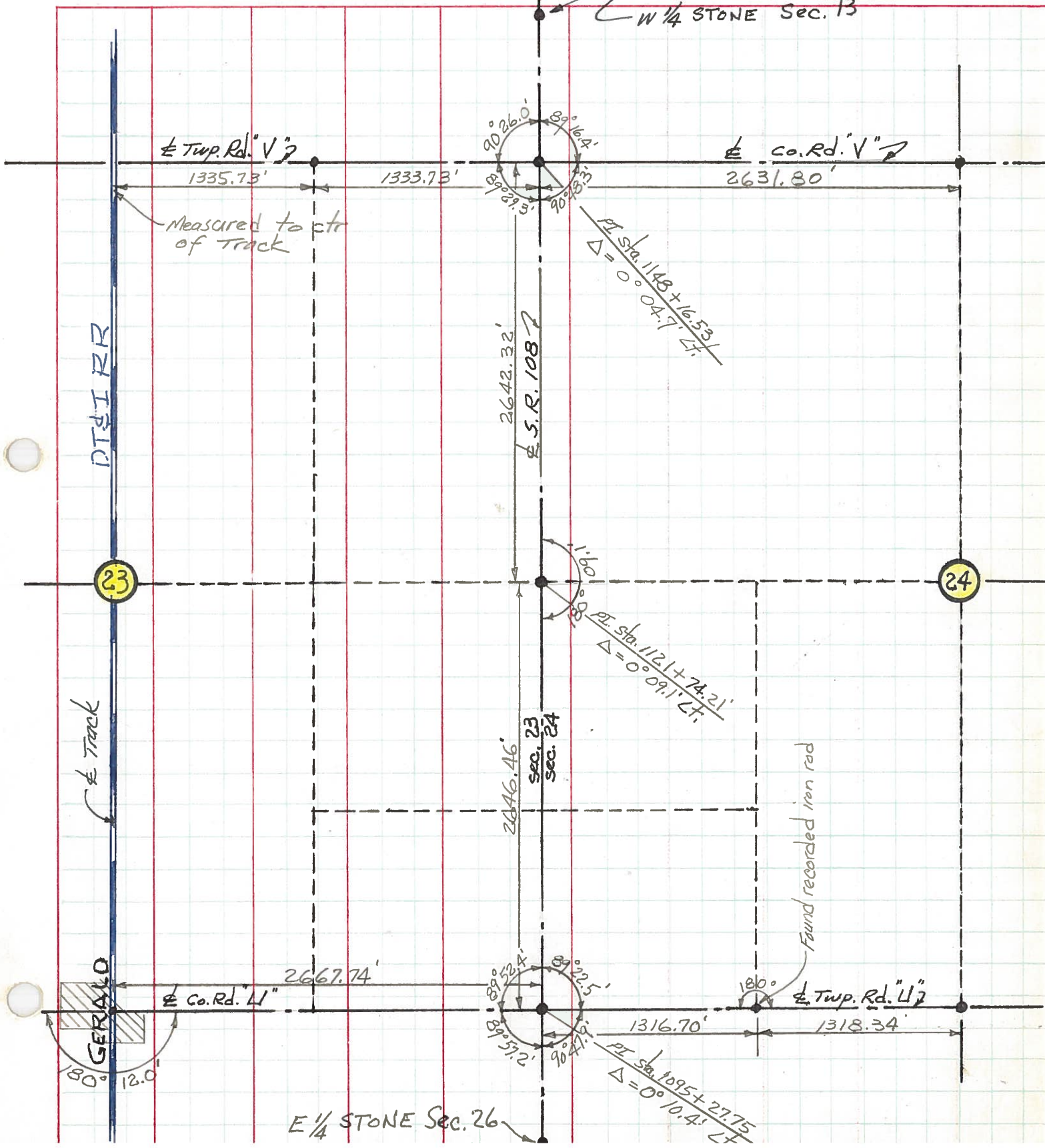
ALIGNMENT & CONTROLS

JOB NO.

LEFT

CENTER LINE

RIGHT



E 1/4 STONE Sec. 26