

office

STONE

MAINTENANCE PROGRAM 1981

PART 1
OF 1

(TOP) TYPE 404 THICKNESS 1/4" PRIORITY

(BASE) TYPE _____ THICKNESS _____ PENETRATION

END LOG S.L.M. 21.41 (Liberty Center NCL Meas. 1128+53 1129+39.20)
BEGIN LOG S.L.M. 20.40 (North side of Bridge Approach Slab Calc. 1130+44.80 (1.01) Calc. (199)=
1077+12.00)
TOTAL LENGTH 0.99 (1.01)

COUNTY HENRY SECTION 20.41 WIDTH (24) BERM CURBED (3) ()
ROUTE SR 109 SECTION 20.54 WIDTH (22) () ()
SECTION 20.88 WIDTH (30) () ()
ORDINANCE Liberty Center SECTION 21.08 WIDTH (22) () ()
END LOG 21.40 SECTION 21.41 WIDTH () () ()
BEGIN LOG 20.41 SECTION _____ WIDTH () () ()

see
Attached
sheets
1 & 2

EXISTING BERM TYPE Slab EXISTING BERM WIDTH 3' MAILBOX APPROACHES No. None
(PAVED, STABILIZED, AGGREGATE) MANHOLES 23

PROPOSED BERM TYPE _____ PROPOSED BERM WIDTH X INLETS CATCH BASINS 19

INTERSECTIONS 18 ASPHALT DRIVEWAYS 18 CONCRETE DRIVEWAYS 10

STRUCTURES

STRUCTURE NO.	WIDTH	LENGTH	APPR. SLABS
<u>None</u>			

RAILROAD CROSSINGS

NAME R. R.	STATION	(*)	()	No.	TRACKS
<u>N & W</u>	<u>1106+60</u>	<u>(19)</u>	<u>(2)</u>		<u>2</u> TRACKS
					TRACKS
					TRACKS
					TRACKS
					TRACKS

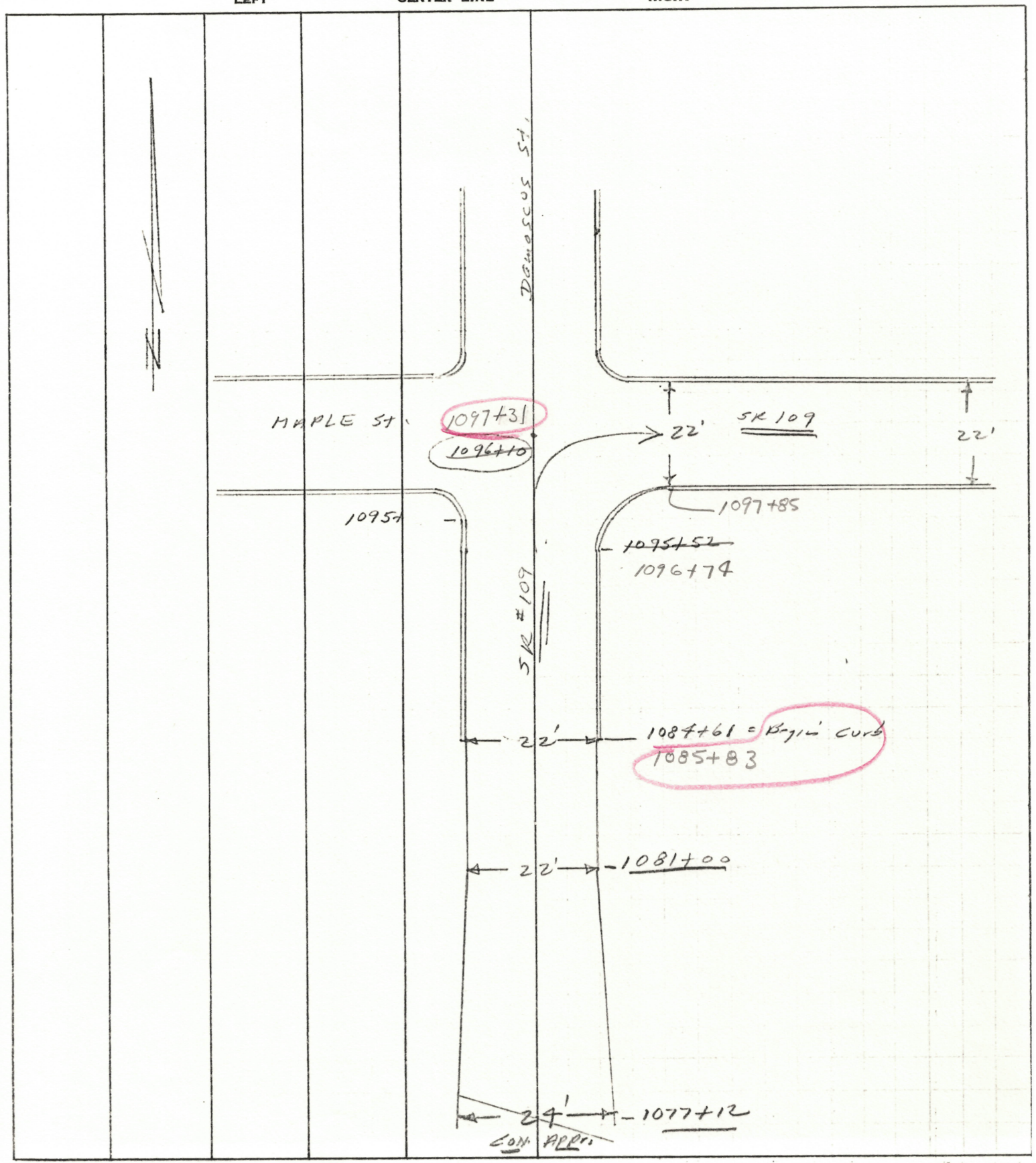
*Indicate length of crossing along & Pav't.

NOTES

Pavement widths see attached sheets 1 & 2

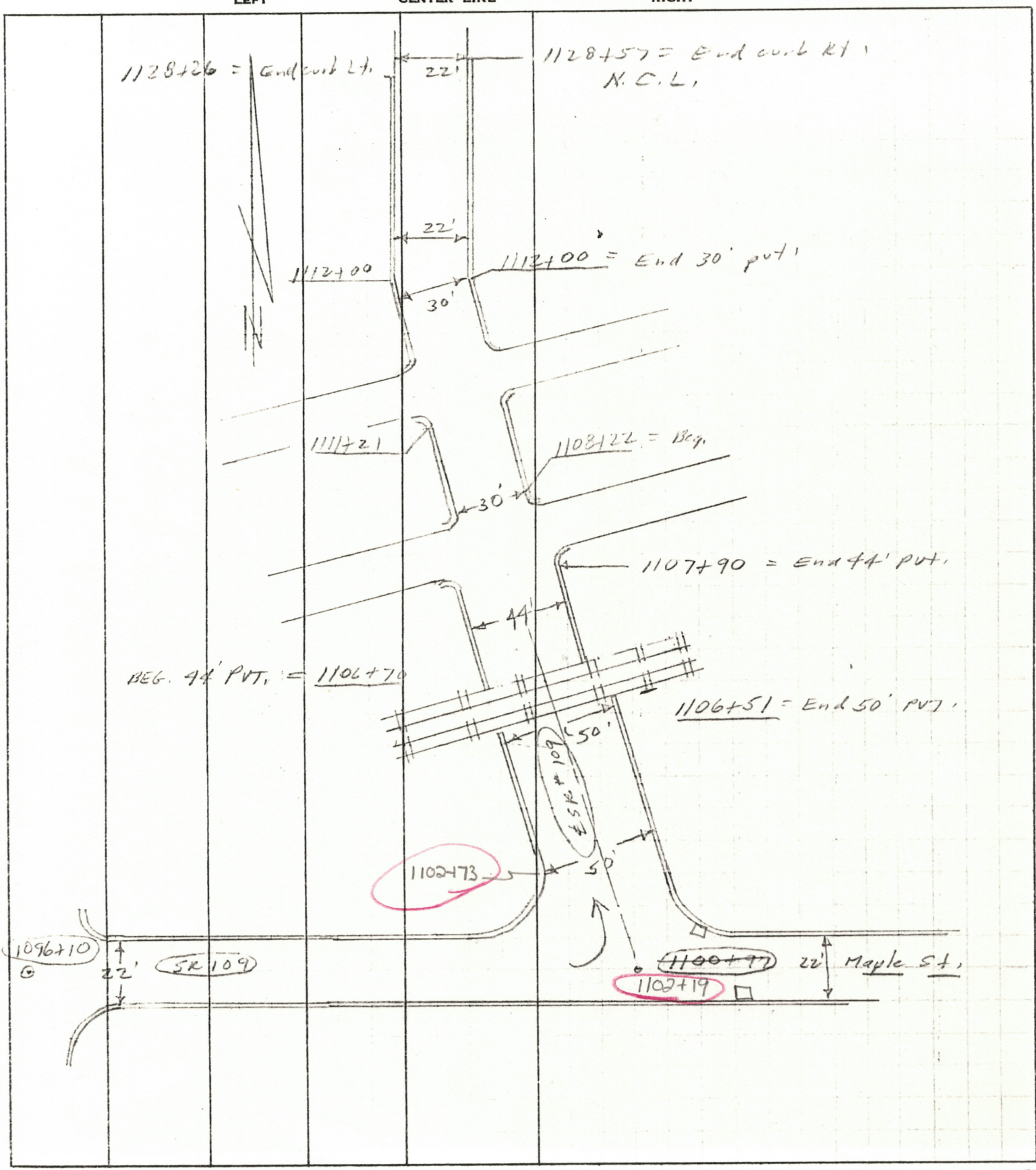
PERSONNEL	TITLE	PERSONNEL	TITLE	COUNTY	DATE
Stovic				Henry	1 Dec. 80
				S. R. 109	WEATHER Damp
Craw				SEC. 20.40 to 21.41	TEMP. 37°

DESCRIPTION: Precinct Information JOB NO. 026112

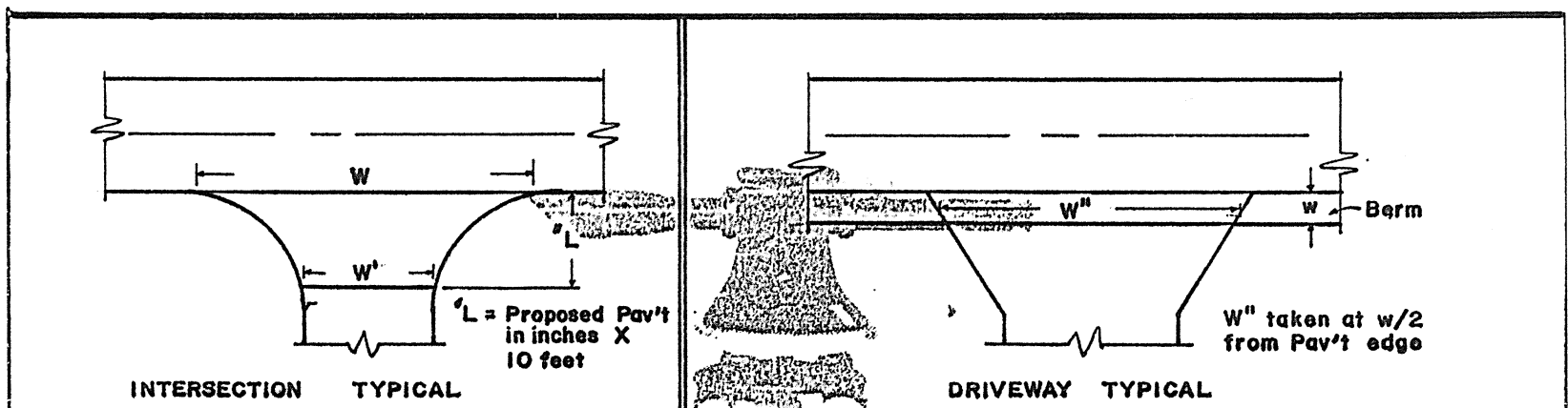


PERSONNEL	TITLE	PERSONNEL	TITLE	COUNTY	DATE
Stacy				Hawley	1 Dec. 80
E				S. R. 109	WEATHER Damp
Crew				SEC. 20.40 to 21.41	TEMP. 37°

DESCRIPTION Revised Information JOB NO. 026112



PERSONNEL _____ TITLE _____ PERSONNEL _____ TITLE _____ COUNTY Way DATE _____
 _____ _____ _____ _____ S. R. 109 WEATHER _____
 _____ _____ _____ _____ SEC. _____ TEMP. _____
 DESCRIPTION _____ LEFT _____ CENTER LINE _____ RIGHT _____ JOB NO. _____



STATION	RT. LT.	L	W	W'	Asph	Conc		STATION	RT. LT.	w	W''	Asph	Conc	Aggr	Dropped Curb Feather NOT Req'd
1087+61	Lt.	12.5	61	26	✓		School	1081+85	Rt	3	25	✓			
1092+80	Lt	12.5	37	27	✓		Pony	1082+75	Rt	3	17	✓			
1092+80	Rt	12.5	52	27	✓		"	1083+00	Lt	3	20	✓			
1096+10	North	12.5	40	22	✓		James	1083+63	Lt	3	27	✓			
1096+10	Lt.	12.5	50	22	✓		Maple	1083+75	Rt	3	28		✓		
1096+10	Rt	12.5	70	35	✓		109	1084+25	Lt	3	20	✓			
1100+97	West	12.5	46	22	✓		109	1104+39	Lt	-	18	✓			
1100+97	Rt.	12.5	30	22	✓		Maple	1104+39	Rt.	-	18	✓			
1100+97	North	12.5	98	54	✓		109	1108+69	Rt	-	62		✓		
1106+00	Lt	12.5	24	18	✓		RK	1109+69	Rt	-	10		✓		
1106+00	Rt.	12.5	24	20	✓		RK	1109+72	Lt	-	17	✓			
1108+07	Lt	12.5	28	21	✓		?	1110+20	Rt	-	16	✓			
1108+07	Rt	12.5	24	21	✓		?	1110+74	Rt.	-	13	✓			
1111+10	Lt	12.5	34	22	✓			1111+00	Rt	-	12	✓			
1115+33	Lt	12.5	34	22	✓		Cherry	1112+34	Lt	-	14		✓		
1115+33	Rt	12.5	55	33	✓		"	1112+79	Lt	-	81	✓			
1119+64	Lt	12.5	30	22	✓		?	1113+32	Rt	-	22	✓			
1124+69	Lt	12.5	30	22	✓		Plum	1116+05	Rt	-	13		✓		
								1116+97	Lt	-	23	✓			
								1117+22	Rt	-	31		✓		
								1117+90	Rt	-	16		✓		
								1119+67	Lt	-	15		✓		
								1120+75	Rt	-	47	✓			
								1122+10	Rt	-	14		✓		

PERSONNEL TITLE PERSONNEL TITLE COUNTY H/ra DATE _____
 _____ S. R. 109 WEATHER _____
 _____ SEC. _____ TEMP. _____

DESCRIPTION LEFT CENTER LINE RIGHT JOB NO. _____

STATION	OUT Rt-Lt	CB	TYPE 1,2,3	MH	TYPE San. Storm	MONU	TYPE Box Other	WV	CASTING		Remarks
									Raise	Feather	
1083+99	6' Lt.			✓	San.				✓		
1084+70	Lt.	✓	3							✓	
1087+76	3' Lt			✓	San.					✓	
1090+44	5' Lt			✓	San.					✓	
1092+67	5' Lt			✓	"					✓	
1094+59	Lt	✓	1							✓	
1094+59	Rt	✓	1							✓	
1095+84	12.5 Rt							✓	✓		
1095+93	15' Rt			✓	San.					✓	
1096+06	6' Lt.			✓	San.					✓	
1096+23	Lt	✓	3							✓	
1096+47	Rt.	✓	3							✓	
1098+95	3' Rt			✓	San.					✓	
1100+97	12' Rt			✓	San.					✓	
1101+00	Rt	✓	3		"					✓	
1101+50	Lt	✓	3		"					✓	
1101+50	28' Lt			✓	Storm					✓	
1103+00	9' Rt			✓	San.					✓	
1104+05	1' Rt			✓	"					✓	
1106+17	Lt.	✓	3							✓	
1107+88	Lt	✓	3							✓	
1107+92	Rt.	✓	3							✓	
1108+96	11' Lt.			✓	San.					✓	
1109+10	6' Rt			✓	San.					✓	
1111+21	Lt.	✓	3							✓	
1111+28	Rt	✓	3							✓	
1111+33	6' Lt			✓	San.					✓	
1112+06	8' Lt			✓	San.					✓	
1112+57	Rt	✓	3							✓	
1112+61	Lt	✓	2							✓	
1112+13	4' Lt.			✓	San.					✓	
1112+35	4' Lt			✓	San.					✓	

