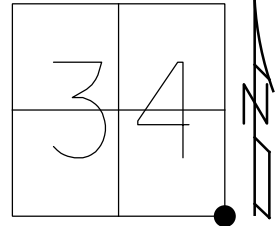


O.D.O.T. DISTRICT 2 SURVEY OFFICE (USE ONLY)

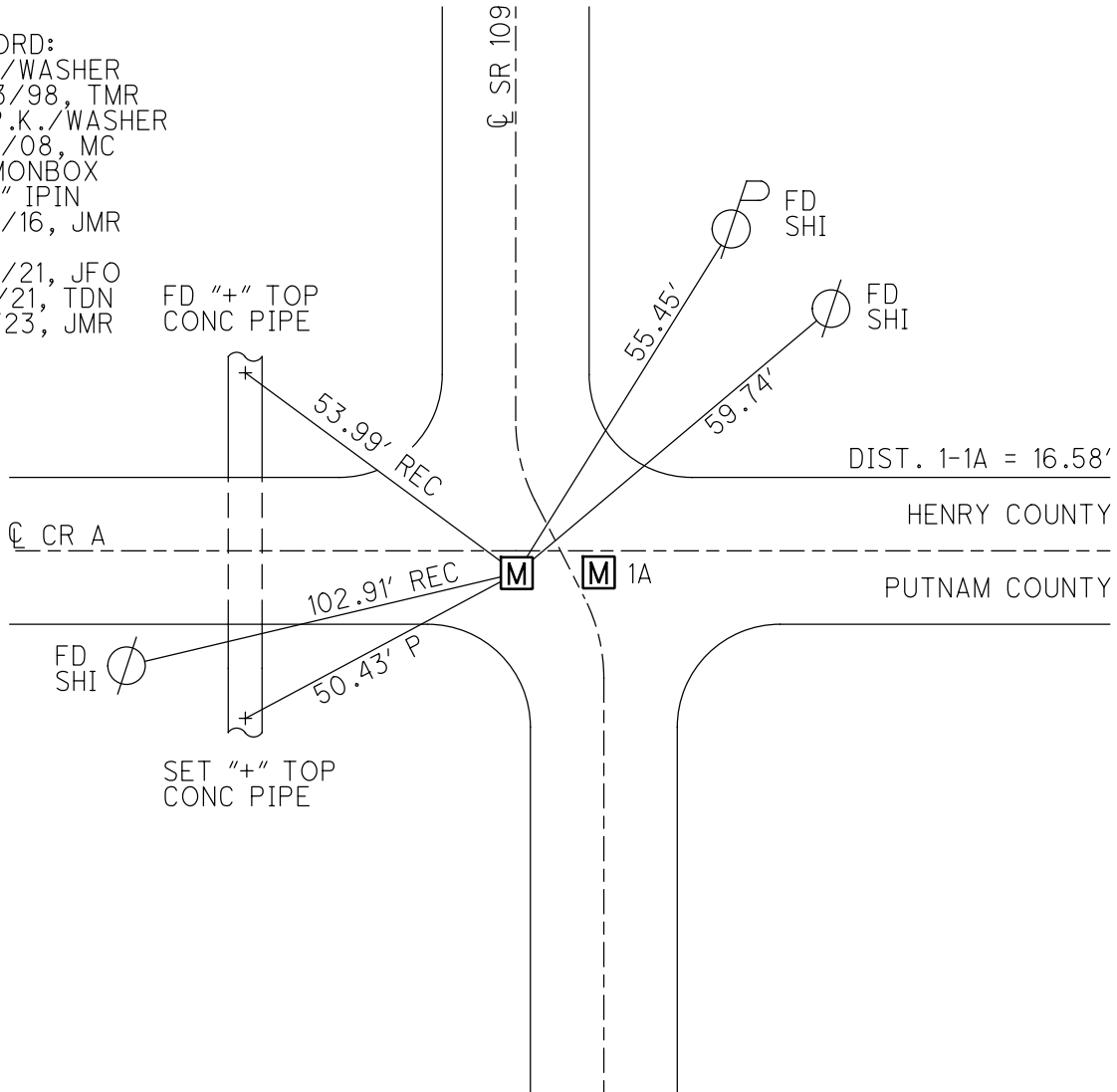
PERSONNEL \_\_\_\_\_ REFERENCE NO. 1 SHEET 1 OF 25  
 NOTES AUBLE DATE 5/18/21 ROUTE SR 109  
 H.C. NIESE WEATHER CLEAR COUNTY HENRY  
 R.C. O'DONNELL TEMP. 70° TOWNSHIP MARION  
 SECTION 34  
 DWG BY NIESE PID PAVETRAIN T 3 N R 7 E

TYPE MONUMENT MONBOX W/ 1" IPIN  
 ON SURFACE - ~~BELOW~~ ON  
 OFFSET Q PAVEMENT 18.1' LT : ~~RT~~  
18.1' TO LT EDGE PAVEMENT 3.0' S. OF CR A  
 STATION: 0+00

HORZ. DATUM: NAD83(2011) GEOID: NAVD88(2012A)  
 GRID: NORTHING: 550290.001 EASTING: 1545792.340



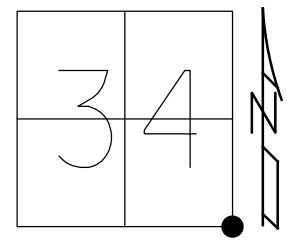
RECORD:  
 P.K./WASHER  
 9/23/98, TMR  
 FD P.K./WASHER  
 5/19/08, MC  
 FD MONBOX  
 W/ 1" IPIN  
 6/17/16, JMR  
 REF1  
 5/18/21, JFO  
 9/3/21, TDN  
 1/11/23, JMR



O.D.O.T. DISTRICT 2 SURVEY OFFICE (USE ONLY)

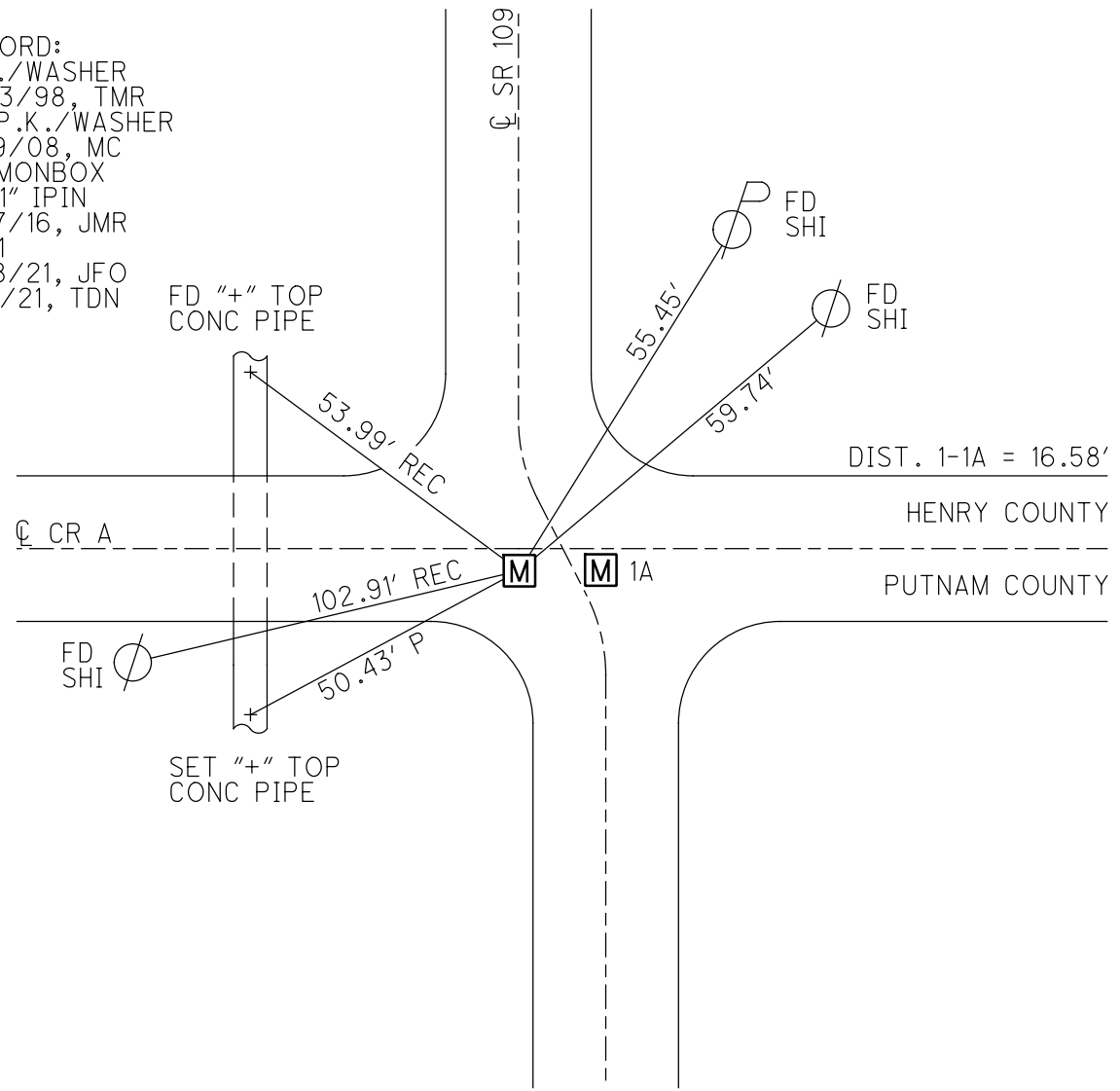
PERSONNEL \_\_\_\_\_ REFERENCE NO. 1 SHEET 1 OF 25  
 NOTES AUBLE DATE 5/18/21 ROUTE SR 109  
 H.C. NIESE WEATHER CLEAR COUNTY HENRY  
 R.C. O'DONNELL TEMP. 70° TOWNSHIP MARION  
 SECTION 34  
 DWG BY NIESE PID PAVETRAIN T 3 N R 7 E

TYPE MONUMENT MONBOX W/ 1" IPIN  
 ON SURFACE - ~~BELOW~~ ON  
 OFFSET 18.1' LT : ~~RT~~  
18.1' TO LT EDGE PAVEMENT 3.0' S. OF CR A  
 STATION: 0+00



HORZ. DATUM: NAD83(2011) GEOID: NAVD88(2012A)  
 GRID: NORTHING: 550290.001 EASTING: 1545792.340

RECORD:  
 P.K./WASHER  
 9/23/98, TMR  
 FD P.K./WASHER  
 5/19/08, MC  
 FD MONBOX  
 W/ 1" IPIN  
 6/17/16, JMR  
 REF1  
 5/18/21, JFO  
 9/3/21, TDN



O.D.O.T. DISTRICT 2 SURVEY OFFICE (USE ONLY)

PERSONNEL \_\_\_\_\_ REFERENCE NO. 1 SHEET 1 OF 26

NOTES	<u>CANTERBURY</u>	DATE	<u>5/19/08</u>	ROUTE	<u>SR 109</u>
H.C.	<u>CANTERBURY</u>	WEATHER	<u>OVERCAST</u>	COUNTY	<u>HENRY</u>
R.C.	<u>ROUSOS</u>	TEMP.	<u>65°</u>	TOWNSHIP	<u>MARION</u>
				SECTION	<u>34</u>
				T	<u>3</u> N
				R	<u>7</u> E

TYPE MONUMENT P.K./WASHER

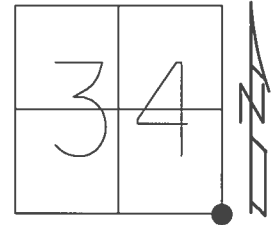
ON SURFACE - ~~BELOW~~ ON

LEFT - ☉ PAV'T - ~~RIGHT~~ 18.1', 3' S OF ☉ CR A

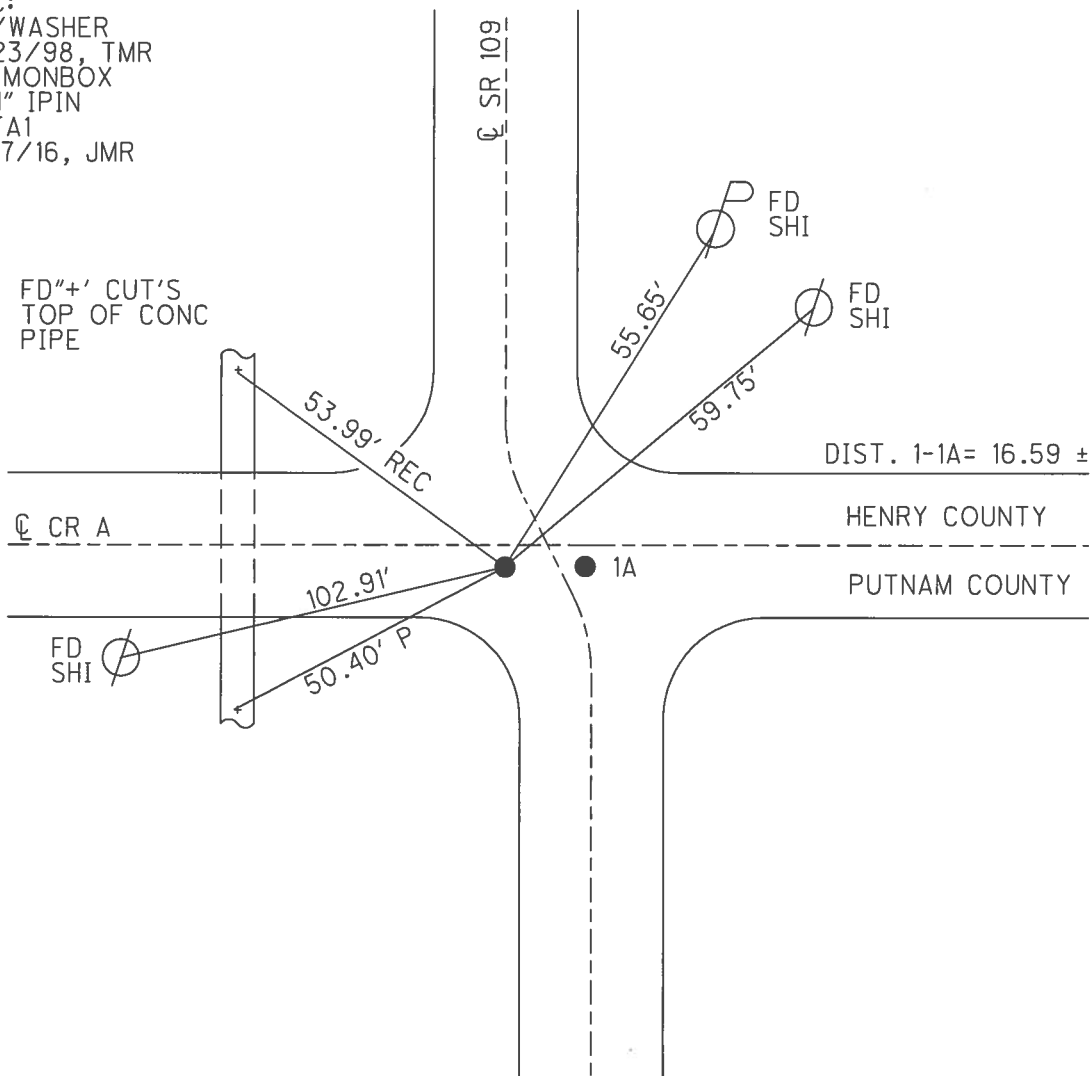
18.1' TO LT EDGE PAVEMENT

S.L.M. 0+00

Grid: Northing: 550290.005 Easting: 1545792.320



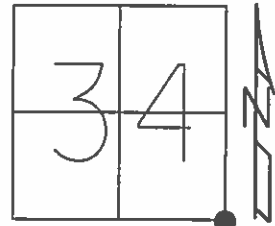
REC:  
PK/WASHER  
9/23/98, TMR  
FD MONBOX  
W/1" IPIN  
REFA1  
6/17/16, JMR



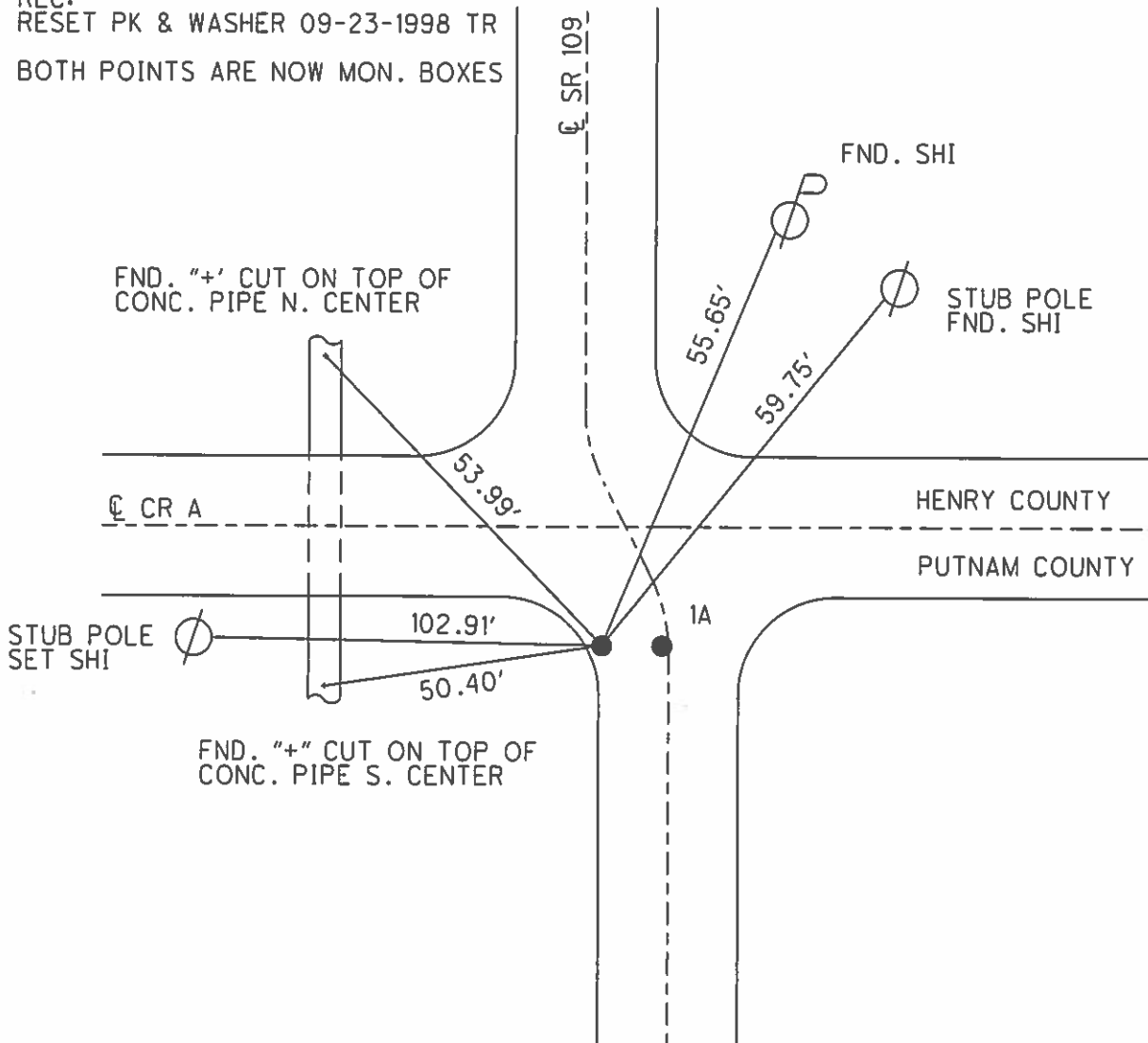
O.D.O.T. DISTRICT 2 SURVEY OFFICE (USE ONLY)

PERSONNEL \_\_\_\_\_ REFERENCE NO. 1 SHEET 1 OF 26  
 NOTES CANTERBURY DATE 05-19-2008 ROUTE SR 109  
 H.C. CANTERBURY WEATHER OVERCAST COUNTY HENRY - PUTNAM  
 R.C. ROUSOS TEMP. 65° TOWNSHIP MARION  
 SECTION 34  
 T 3 N R 7 E

TYPE MONUMENT PK & WASHER  
 ON SURFACE - ~~BELOW~~ ON \_\_\_\_\_  
 LEFT - ☉ PAV'T - RIGHT 18.1'  
 - TO - EDGE PAVEMENT 3' S OF CO. RD "A"  
 S.L.M. 0+00  
 Grid: Northing: \_\_\_\_\_ Easting: \_\_\_\_\_



REC:  
 RESET PK & WASHER 09-23-1998 TR  
 BOTH POINTS ARE NOW MON. BOXES



O.D.O.T. DISTRICT 2 SURVEY OFFICE

PERSONNEL \_\_\_\_\_

REFERENCE NO. 1

SHEET 1 OF 2

NOTES CANTERBURY

H.C. CANTERBURY

R.C. ROUSOS

DATE 5-7-98

WEATHER OVERCAST

TEMP. 65°

ROUTE 109

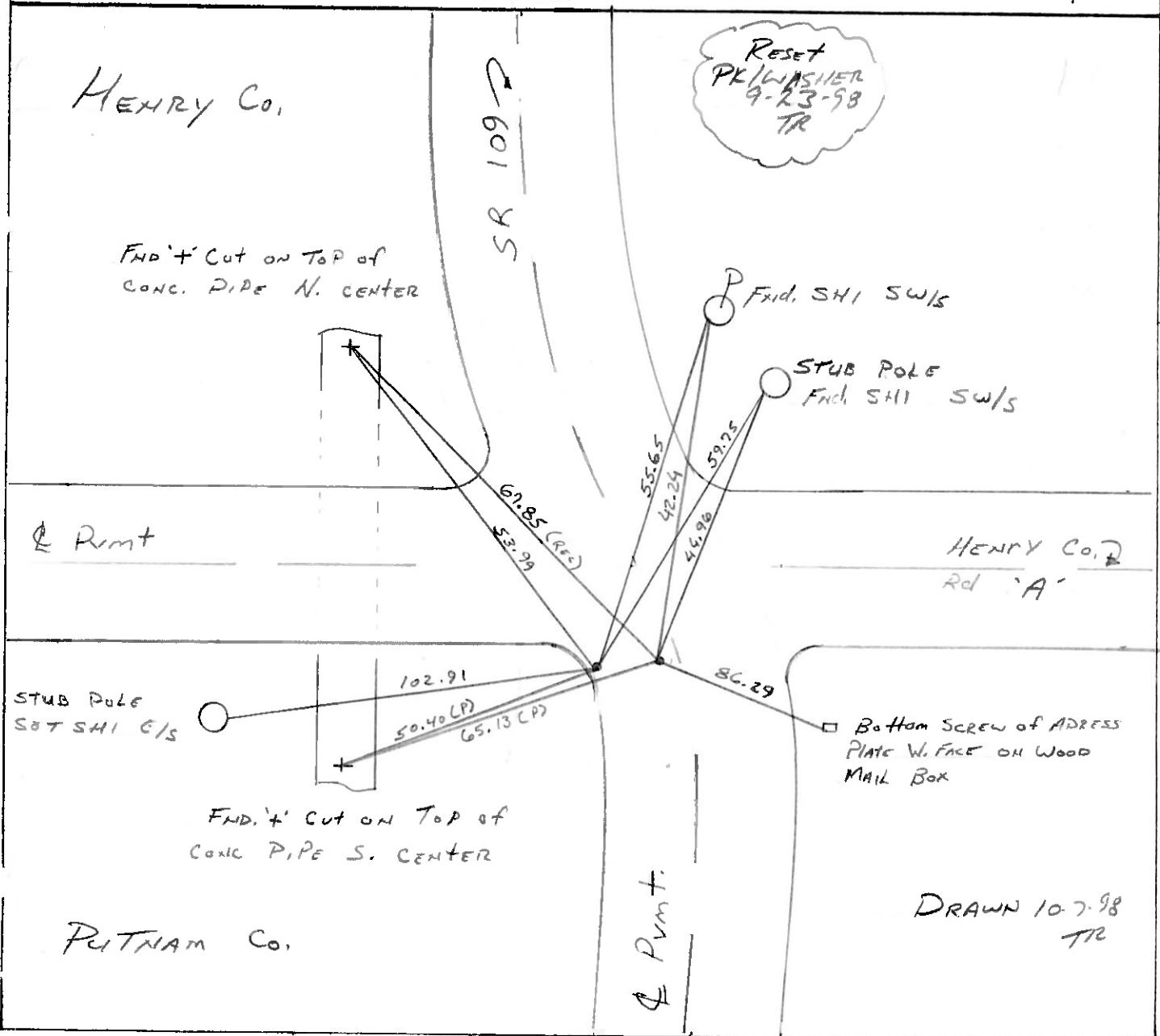
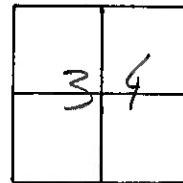
COUNTY Henry - Putnam Co. Line

TOWNSHIP Marion

SECTION 34

T3 N R7 E

TYPE MONUMENT A: PK/WASHER  
B: PK/WASHER  
 ON SURFACE - BELOW A: Surface  
B: Surface  
 LEFT- & PAV'T. - RIGHT A: 18.1'±  
B: 1.7'±  
 TO EDGE PAVEMENT A+B are both 3'S & Co. Rd. 'A'  
 S.L.M. 0+00



DRAWN 10-7-98  
TR

# O.D.O.T. DISTRICT 2 SURVEY OFFICE

PERSONNEL \_\_\_\_\_

REFERENCE NO. 1

SHEET 1 OF \_\_\_\_\_

NOTES BARNHISEL

H.C. " "

R.C. HOFFMAN

DATE 3-29-89

WEATHER cloudy

TEMP. +45°

ROUTE 109

COUNTY HENRY-PUTNAM CO. LINE

TOWNSHIP MARION

SECTION 34

T 3 N R 7 E

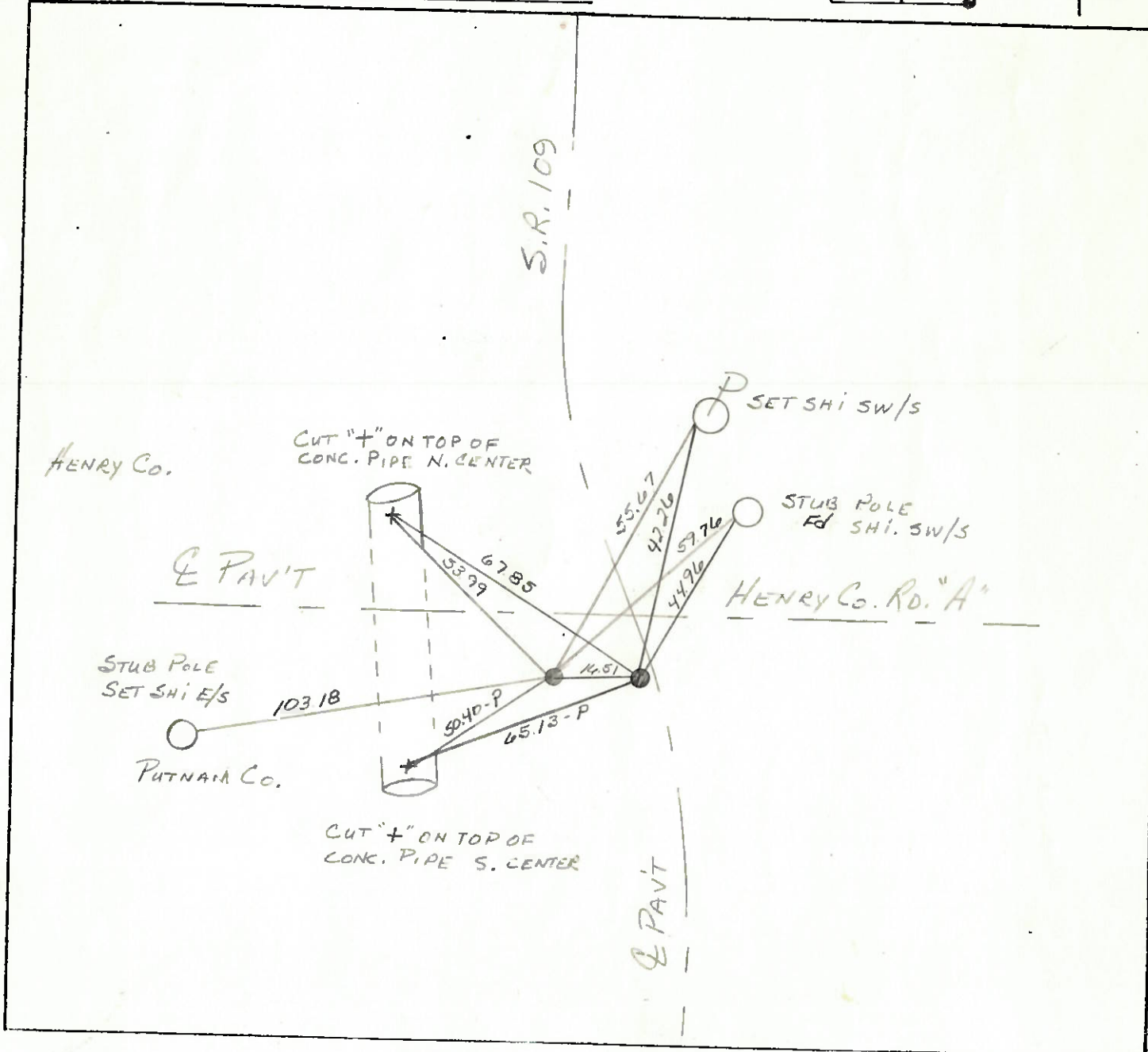
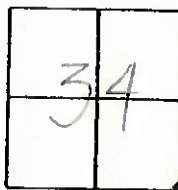
TYPE MONUMENT P.K. & WASHER

ON SURFACE - BELOW yes

LEFT- & PAV'T. - RIGHT 17.6 OF S.R. 109

TO EDGE PAVEMENT 3' S. OF Co. RD. A WEST

S.L.M. 0+00



O.D.O.T. DISTRICT 2 SURVEY OFFICE

SHEET \_\_\_\_\_ OF \_\_\_\_\_

County HENRY S.R. 109

Date MARCH 15, 1983

Township MARION

Weather CLEAR

Section 34

Temp. +50°

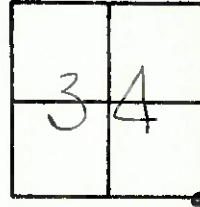
T3N, R7E

Personnel HOFFMAN

LOEHRKE

#/ HOUSEHOLDER

BARNHISEL



Fd R.R. SPK @ SURFACE SET BY COUNTY  
OVER CORNER STONE

S.L.M. 0+00

17.7' LT. of & PAUT SR 109

3.6' SOUTH of & PAUT Co. Rd. "A"

