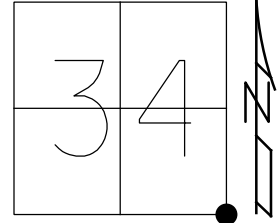


O.D.O.T. DISTRICT 2 SURVEY OFFICE (USE ONLY)

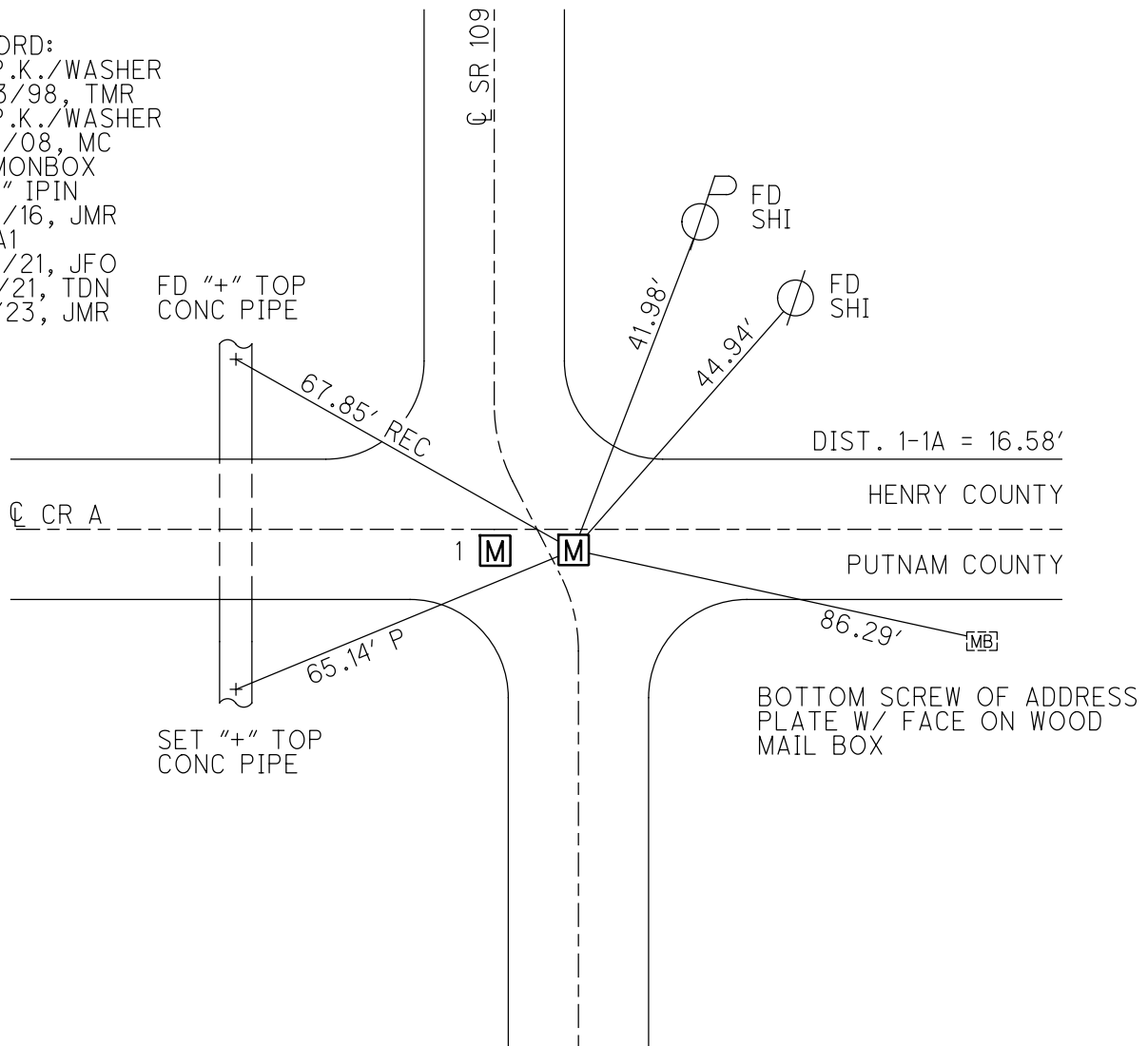
PERSONNEL \_\_\_\_\_ REFERENCE NO. 1 A SHEET 2 OF 25  
 NOTES AUBLE DATE 5/18/21 ROUTE SR 109  
 H.C. NIESE WEATHER CLEAR COUNTY HENRY  
 R.C. O'DONNELL TEMP. 70° TOWNSHIP MARION  
 DWG BY NIESE PID PAVETRAIN SECTION 34  
 T 3 N R 7 E

TYPE MONUMENT MONBOX W/ 1" IPIN  
 ON SURFACE - ~~BELOW~~ ON  
 OFFSET 1.7' ET : RT  
1.7' TO RT EDGE PAVEMENT 3.0' S. OF CR A  
 STATION: 0+00



HORIZ.DATUM: NAD83(2011) GEOID: NAVD88(2012A)  
 GRID: NORTHING: 550289.827 EASTING: 1545808.891

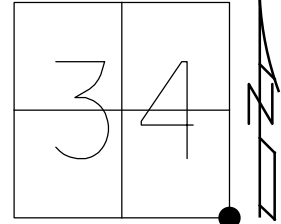
RECORD:  
 FD P.K./WASHER  
 9/23/98, TMR  
 FD P.K./WASHER  
 5/19/08, MC  
 FD MONBOX  
 W/ 1" IPIN  
 6/17/16, JMR  
 REFA1  
 5/18/21, JFO  
 9/3/21, TDN  
 1/11/23, JMR



O.D.O.T. DISTRICT 2 SURVEY OFFICE (USE ONLY)

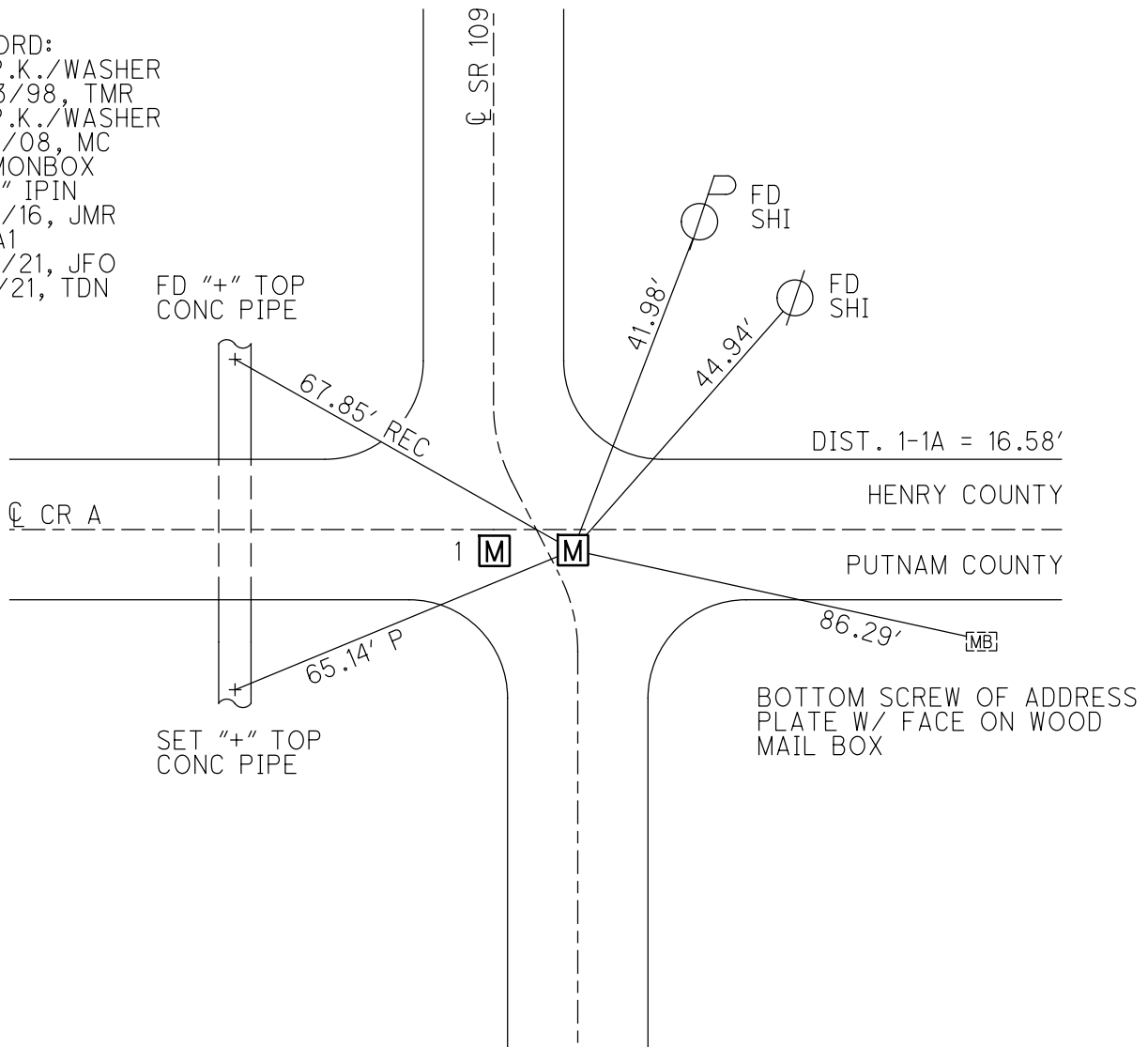
PERSONNEL \_\_\_\_\_ REFERENCE NO. 1 A SHEET 2 OF 25  
 NOTES AUBLE DATE 5/18/21 ROUTE SR 109  
 H.C. NIESE WEATHER CLEAR COUNTY HENRY  
 R.C. O'DONNELL TEMP. 70° TOWNSHIP MARION  
 DWG BY NIESE PID PAVETRAIN SECTION 34  
 T 3 N R 7 E

TYPE MONUMENT MONBOX W/ 1" IPIN  
 ON SURFACE - ~~BELOW~~ ON  
 OFFSET 1.7' RT : RT  
1.7' TO RT EDGE PAVEMENT 3.0' S. OF CR A  
 STATION: 0+00



HORZ. DATUM: NAD83(2011) GEOID: NAVD88(2012A)  
 GRID: NORTHING: 550289.827 EASTING: 1545808.891

RECORD:  
 FD P.K./WASHER  
 9/23/98, TMR  
 FD P.K./WASHER  
 5/19/08, MC  
 FD MONBOX  
 W/ 1" IPIN  
 6/17/16, JMR  
 REFA1  
 5/18/21, JFO  
 9/3/21, TDN



O.D.O.T. DISTRICT 2 SURVEY OFFICE (USE ONLY)

PERSONNEL \_\_\_\_\_ REFERENCE NO. 1 A SHEET 2 OF 26  
 NOTES CANTERBURY DATE 5/19/08 ROUTE SR 109  
 H.C. CANTERBURY WEATHER OVERCAST COUNTY HENRY  
 R.C. ROUSOS TEMP. 65° TOWNSHIP MARION  
 \_\_\_\_\_ SECTION 34  
 \_\_\_\_\_ T 3 N R 7 E

TYPE MONUMENT PK & WASHER

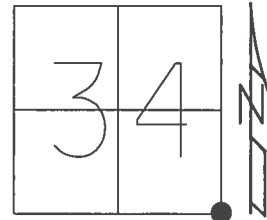
ON SURFACE - ~~BELOW~~ ON \_\_\_\_\_

~~LEFT~~ - CL PAV'T - RIGHT 1.7', 3' S OF CR A

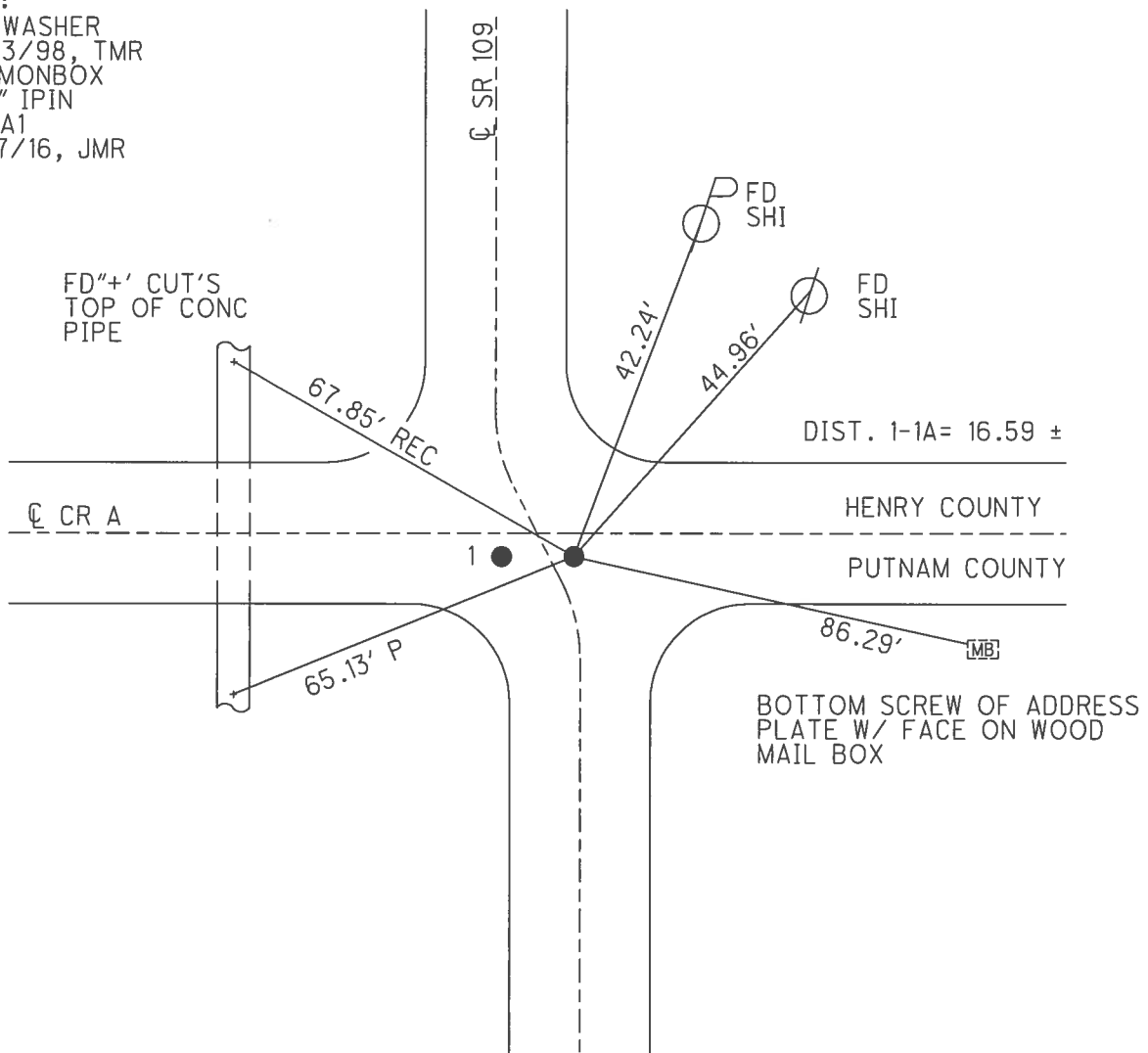
1.7' TO RT EDGE PAVEMENT

S.L.M. 0+00

Grid: Northing: 550289.838 Easting: 1545808.912



REC:  
 PK/WASHER  
 9/23/98, TMR  
 FD MONBOX  
 W/1" IPIN  
 REFA1  
 6/17/16, JMR

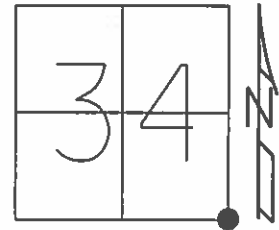


BOTTOM SCREW OF ADDRESS  
 PLATE W/ FACE ON WOOD  
 MAIL BOX

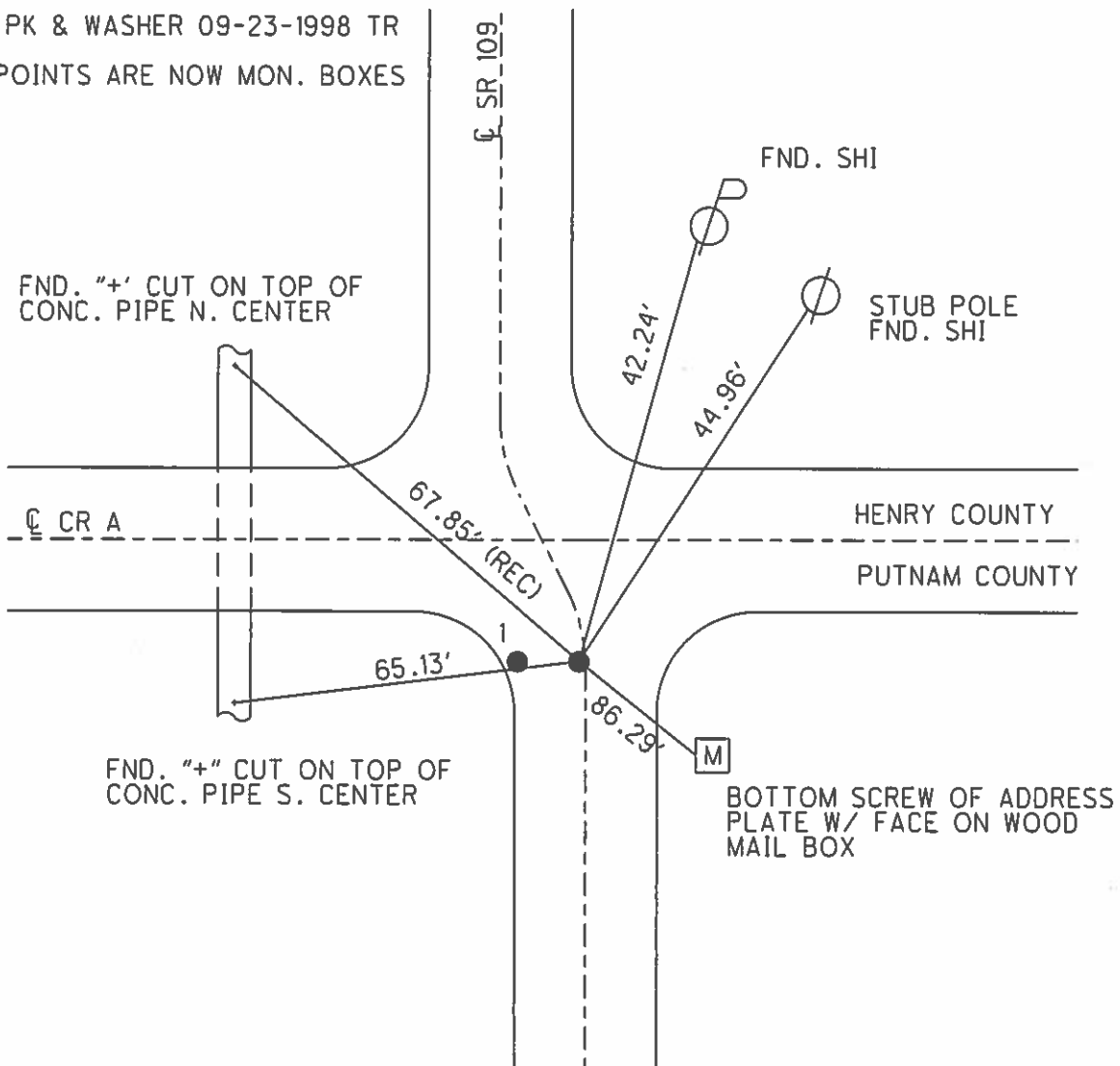
O.D.O.T. DISTRICT 2 SURVEY OFFICE (USE ONLY)

PERSONNEL \_\_\_\_\_ REFERENCE NO. 1 A SHEET 2 OF 26  
 NOTES CANTERBURY DATE 05-19-2008 ROUTE SR 109  
 H.C. CANTERBURY WEATHER OVERCAST COUNTY HENRY - PUTNAM  
 R.C. ROUSOS TEMP. 65° TOWNSHIP MARION  
 SECTION 34  
 T 3 N R 7 E

TYPE MONUMENT PK & WASHER  
 ON SURFACE - ~~BELOW~~ ON \_\_\_\_\_  
~~LEFT~~ - ☉ PAV'T - RIGHT 1.7'  
 - TO - EDGE PAVEMENT 3' S OF CO. RD "A"  
 S.L.M. 0+00  
 Grid: Northing: \_\_\_\_\_ Easting: \_\_\_\_\_



REC:  
 RESET PK & WASHER 09-23-1998 TR  
 BOTH POINTS ARE NOW MON. BOXES



O.D.O.T. DISTRICT 2 SURVEY OFFICE

PERSONNEL

REFERENCE NO. 1

SHEET 1 OF 2

NOTES CANTERBURY

H.C. CANTERBURY

R.C. ROUSOS

DATE 5-7-98

WEATHER OVERCAST

TEMP. 65°

ROUTE 109

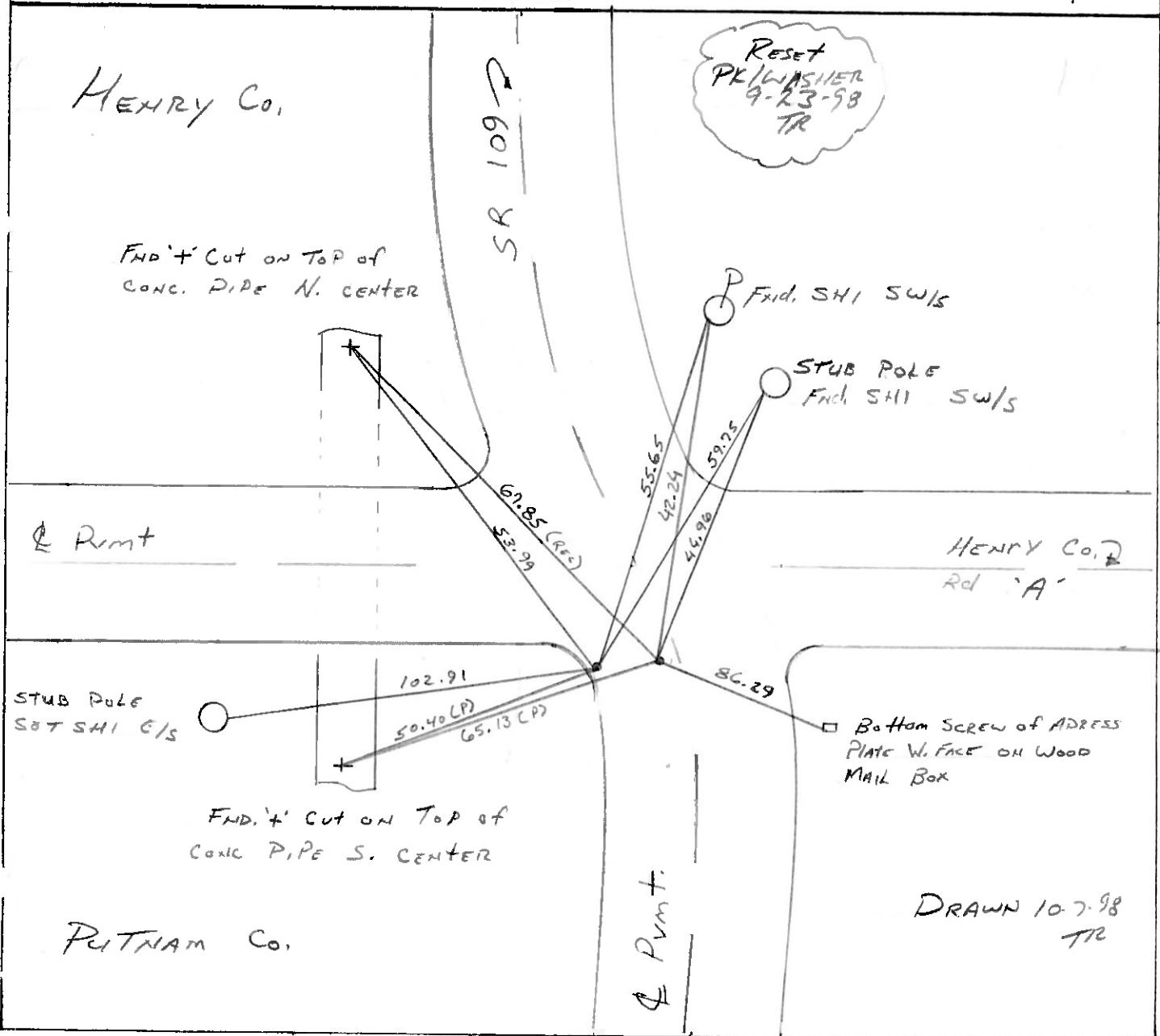
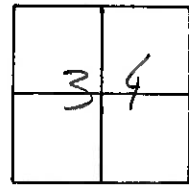
COUNTY Henry - Putnam Co Line

TOWNSHIP Marion

SECTION 34

T3 N R 7 E

TYPE MONUMENT A: PK/WASHER  
B: PK/WASHER  
 ON SURFACE - BELOW A: Surface  
B: Surface  
 LEFT- & PAV'T. - RIGHT A: 18.1'±  
B: 1.7'±  
 TO EDGE PAVEMENT A+B are both 3'S & Co. Rd. 'A'  
 S.L.M. 0+00



DRAWN 10-7-98 TR

# O.D.O.T. DISTRICT 2 SURVEY OFFICE

PERSONNEL \_\_\_\_\_

REFERENCE NO. 1

SHEET 1 OF \_\_\_\_\_

NOTES BARNHISEL

H.C. " "

R.C. HOFFMAN

DATE 3-29-89

WEATHER cloudy

TEMP. +45°

ROUTE 109

COUNTY HENRY-PUTNAM CO. LINE

TOWNSHIP MARION

SECTION 34

T 3 N R 7 E

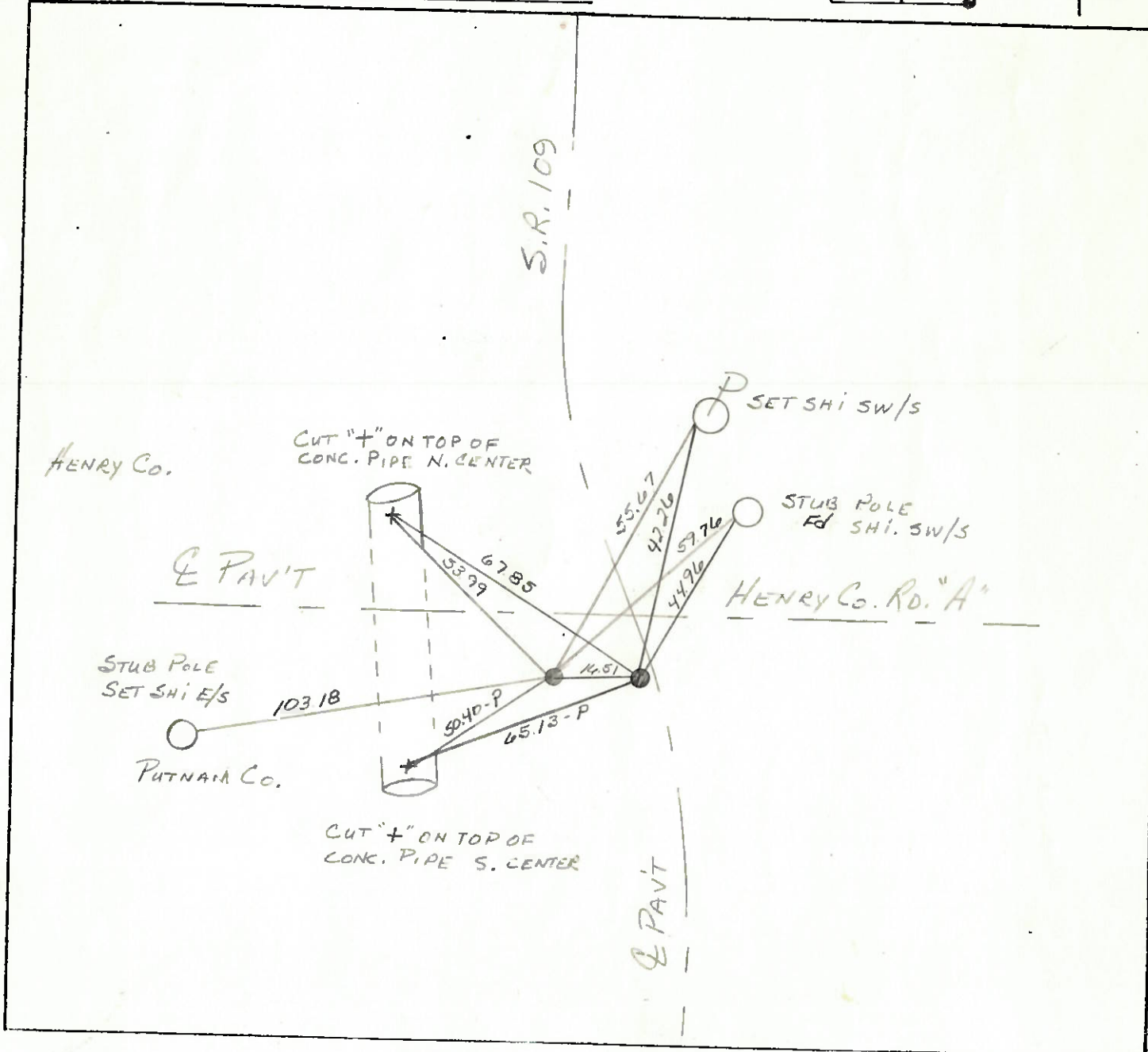
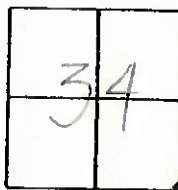
TYPE MONUMENT P.K. & WASHER

ON SURFACE - BELOW yes

LEFT- & PAV'T. - RIGHT 17.6 OF S.R. 109

TO EDGE PAVEMENT 3' S. OF Co. RD. A WEST

S.L.M. 0+00



PERSONNEL	TITLE	PERSONNEL	TITLE	COUNTY	HEALY	DATE	JUL 30, 1973
Trause				S. R.	109	WEATHER	
Nasser				SEC.	MARION TWP	TEMP.	
Ernst							
Vogel							

