

O.D.O.T. DISTRICT 2 SURVEY OFFICE (USE ONLY)

PERSONNEL

REFERENCE NO. 2

SHEET 3 OF 25

NOTES AUBLE

DATE 5/18/21

ROUTE SR 109

H.C. NIESE

WEATHER SUNNY

COUNTY HENRY

R.C. O'DONNELL

TEMP. 70°

TOWNSHIP MARION

DWG BY NIESE

PID PAVETRAIN

SECTION 34

T 3 N R 7 E

TYPE MONUMENT P.K./WASHER

ON SURFACE - ~~BELOW~~ ON

OFFSET Q PAVEMENT 6.8' LT : ~~RT~~

3.1' TO LT EDGE PAVEMENT

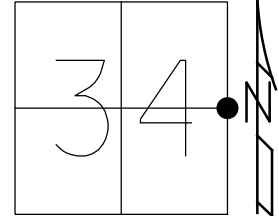
STATION: 26+52

HORIZ.DATUM: NAD83(2011)

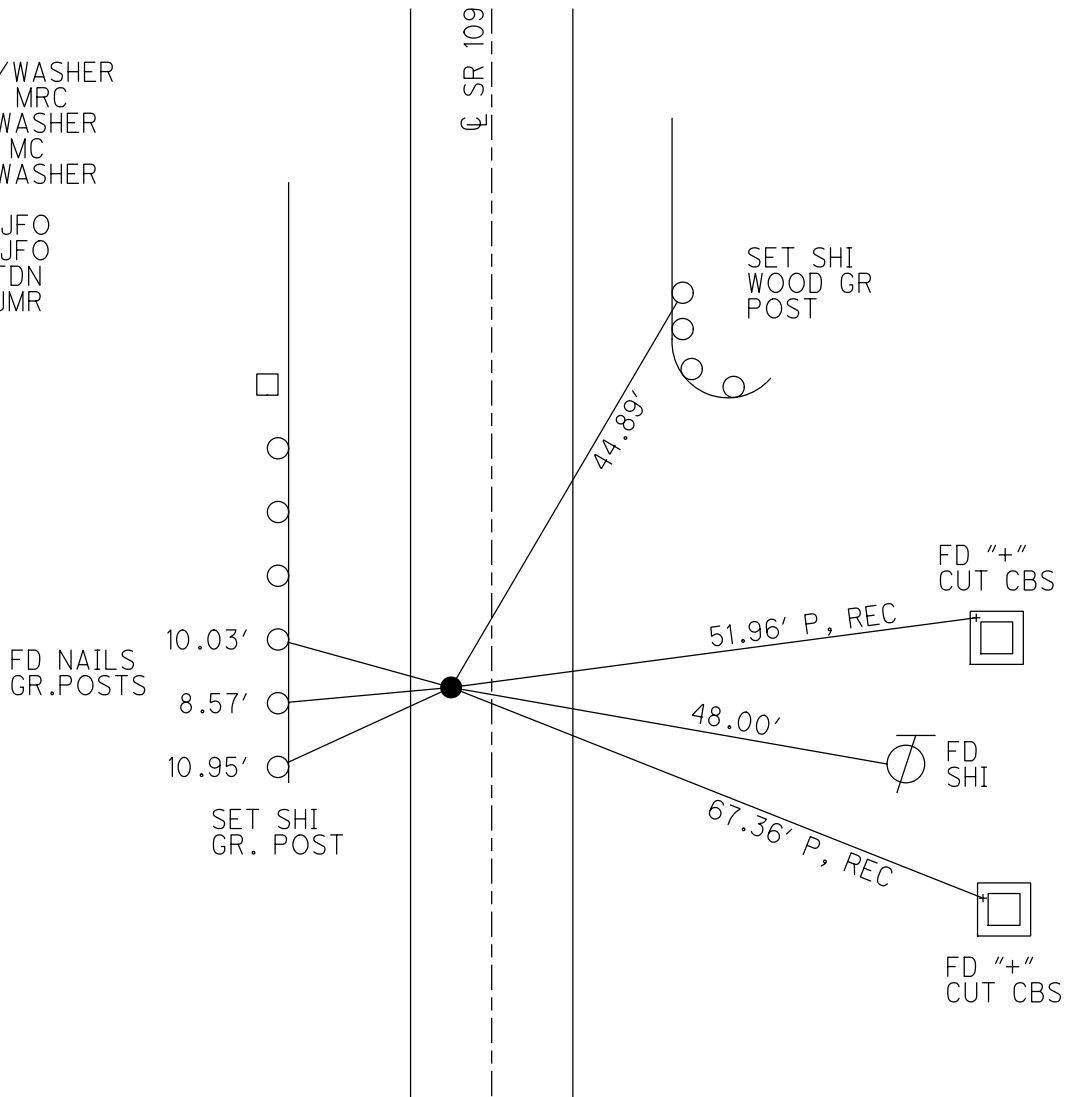
GEOID: NAVD88(2012A)

GRID: NORTHING: 552941.237

EASTING: 1545818.519



RECORD:
 SET P.K./WASHER
 9/23/98, MRC
 FD P.K./WASHER
 5/19/08, MC
 FD P.K./WASHER
 REF2
 6/17/16, JFO
 5/18/21, JFO
 9/3/21, TDN
 1/11/23, JMR



O.D.O.T. DISTRICT 2 SURVEY OFFICE (USE ONLY)

PERSONNEL

REFERENCE NO. 2

SHEET 3 OF 25

NOTES AUBLE DATE 5/18/21
 H.C. NIESE WEATHER SUNNY
 R.C. O'DONNELL TEMP. 70°

ROUTE SR 109
 COUNTY HENRY
 TOWNSHIP MARION
 SECTION 34

DWG BY NIESE PID PAVETRAIN

T 3 N R 7 E

TYPE MONUMENT P.K./WASHER

ON SURFACE - ~~BELOW~~ ON

OFFSET \odot PAVEMENT 6.8' LT : ~~RT~~

3.1' TO LT EDGE PAVEMENT

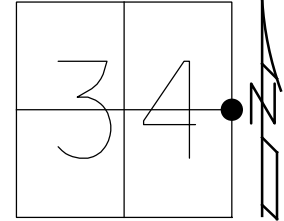
STATION: 26+52

HORZ.DATUM: NAD83(2011)

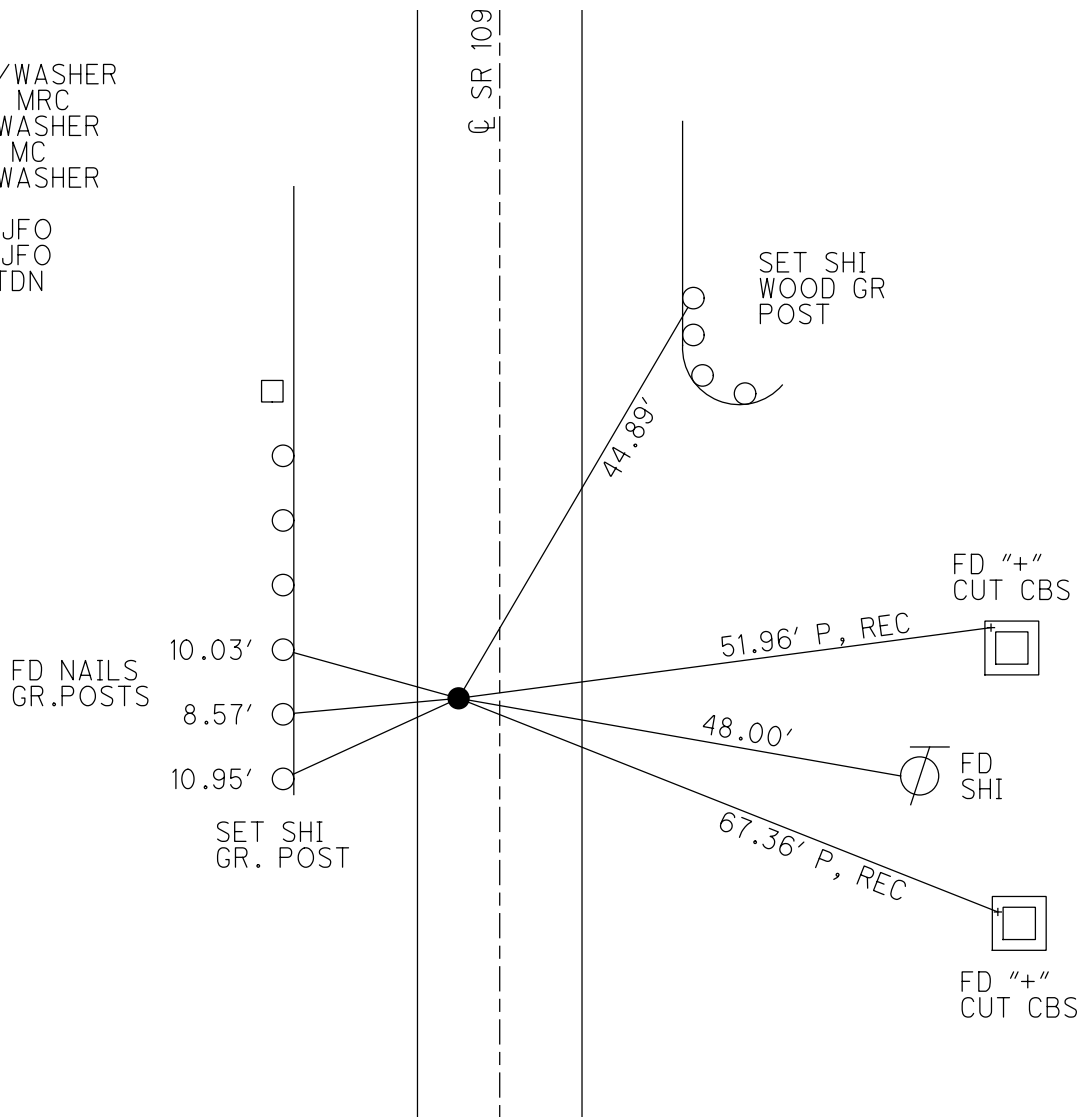
GEOID: NAVD88(2012A)

GRID: NORTHING: 552941.237

EASTING: 1545818.519



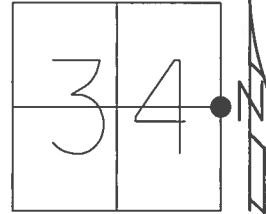
RECORD:
 SET P.K./WASHER
 9/23/98, MRC
 FD P.K./WASHER
 5/19/08, MC
 FD P.K./WASHER
 REF2
 6/17/16, JFO
 5/18/21, JFO
 9/3/21, TDN



O.D.O.T. DISTRICT 2 SURVEY OFFICE (USE ONLY)

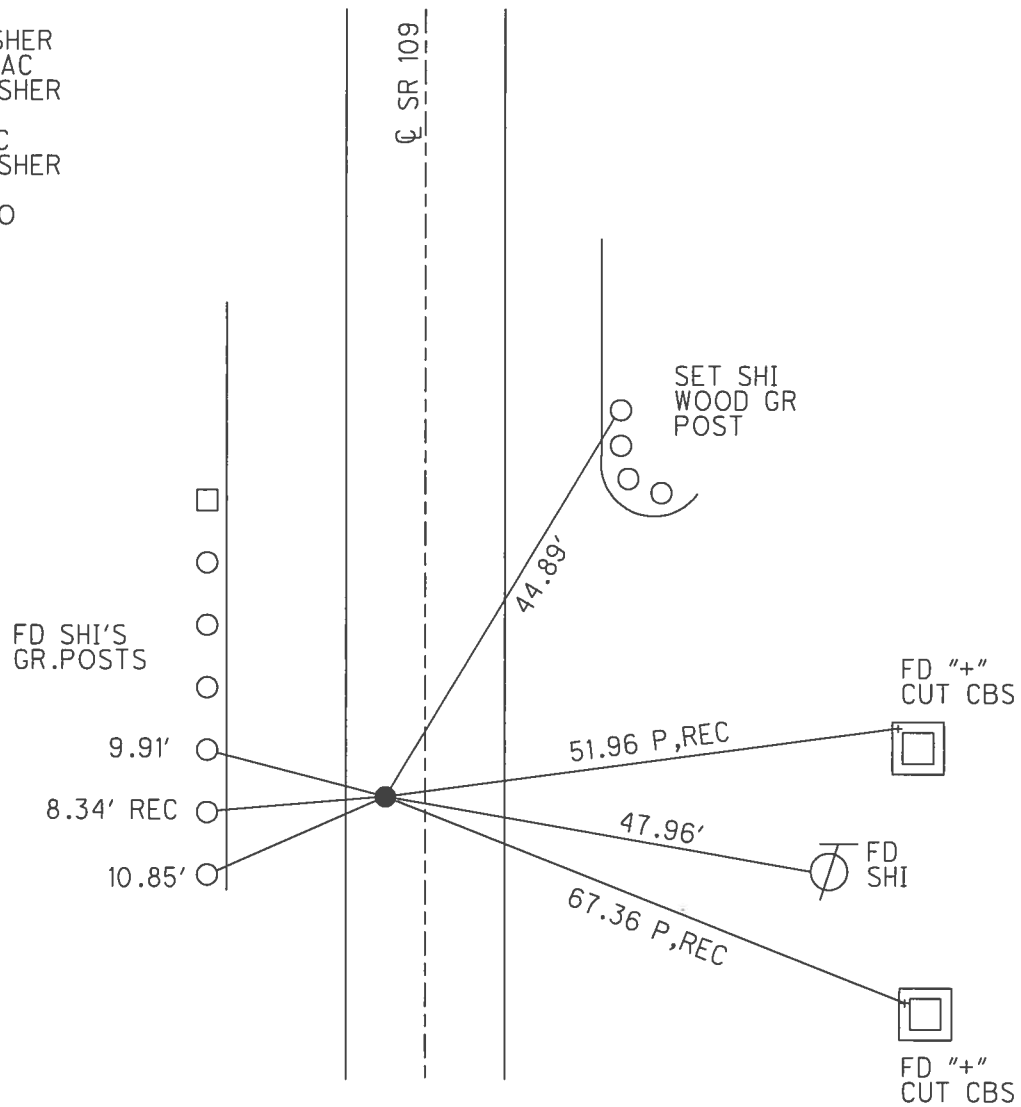
PERSONNEL _____ REFERENCE NO. 2 SHEET 3 OF 26
 NOTES HUSS DATE 5/19/08 ROUTE SR 109
 H.C. CANTERBURY WEATHER SUNNY COUNTY HENRY
 R.C. HUSS TEMP. 57° TOWNSHIP MARION
 _____ SECTION 34
 _____ T 3 N R 7 E

TYPE MONUMENT P.K./WASHER
 ON SURFACE - ~~BELOW~~ _____ ON _____
 LEFT - ☉ PAV'T - ~~RIGHT~~ 6.8'
3.1' TO LT EDGE PAVEMENT
 S.L.M. 26+52



Grid: Northing: 552941.237 Easting: 1545818.519

RECORD:
 SET PK/WASHER
 9/23/98, MAC
 FD P.K./WASHER
 SV2
 5/19/08, MC
 FD P.K./WASHER
 REF2
 6/17/16, JFO



O.D.O.T. DISTRICT 2 SURVEY OFFICE

PERSONNEL

REFERENCE NO. 2

SHEET 2 OF 2

NOTES Canterbury

H.C. Canterbury

R.C. Rouss

DATE 5-7-98

WEATHER OVERCAST

TEMP. 65°

ROUTE 109

COUNTY HENRY

TOWNSHIP MARION

SECTION 34

T. 3 N. R. 7 E.

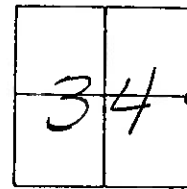
TYPE MONUMENT Lg. RR SPIKE

ON SURFACE - BELOW 6"

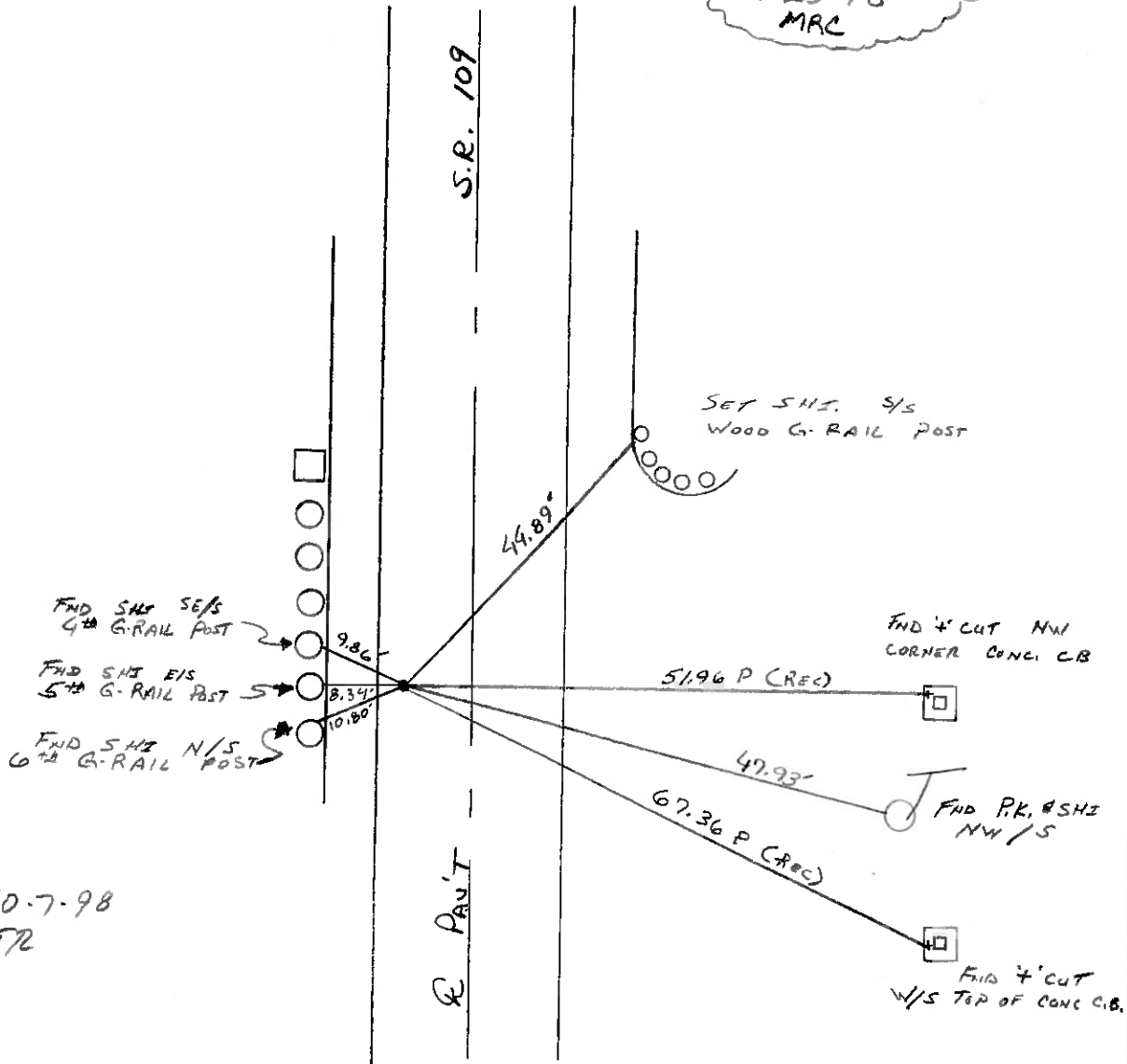
LEFT - C. PAV'T. - RIGHT 7.3'

1.9 TO L + EDGE PAVEMENT

S.L.M. 0+811.70 stk (26+52)



RESET P.K. SHZ
9-23-98
MRC



DRAWN 10-7-98
TR

O.D.O.T. DISTRICT 2 SURVEY OFFICE

PERSONNEL _____

REFERENCE NO. 2

SHEET 2 OF _____

NOTES _____

H.C. BAENHISEL

DATE 8-22-88

ROUTE 109

R.C. LOEHRKE

WEATHER Pt. Cloudy

COUNTY HENRY

TEMP. +70°

TOWNSHIP MARION

SECTION 34

T 3 N R 7 E

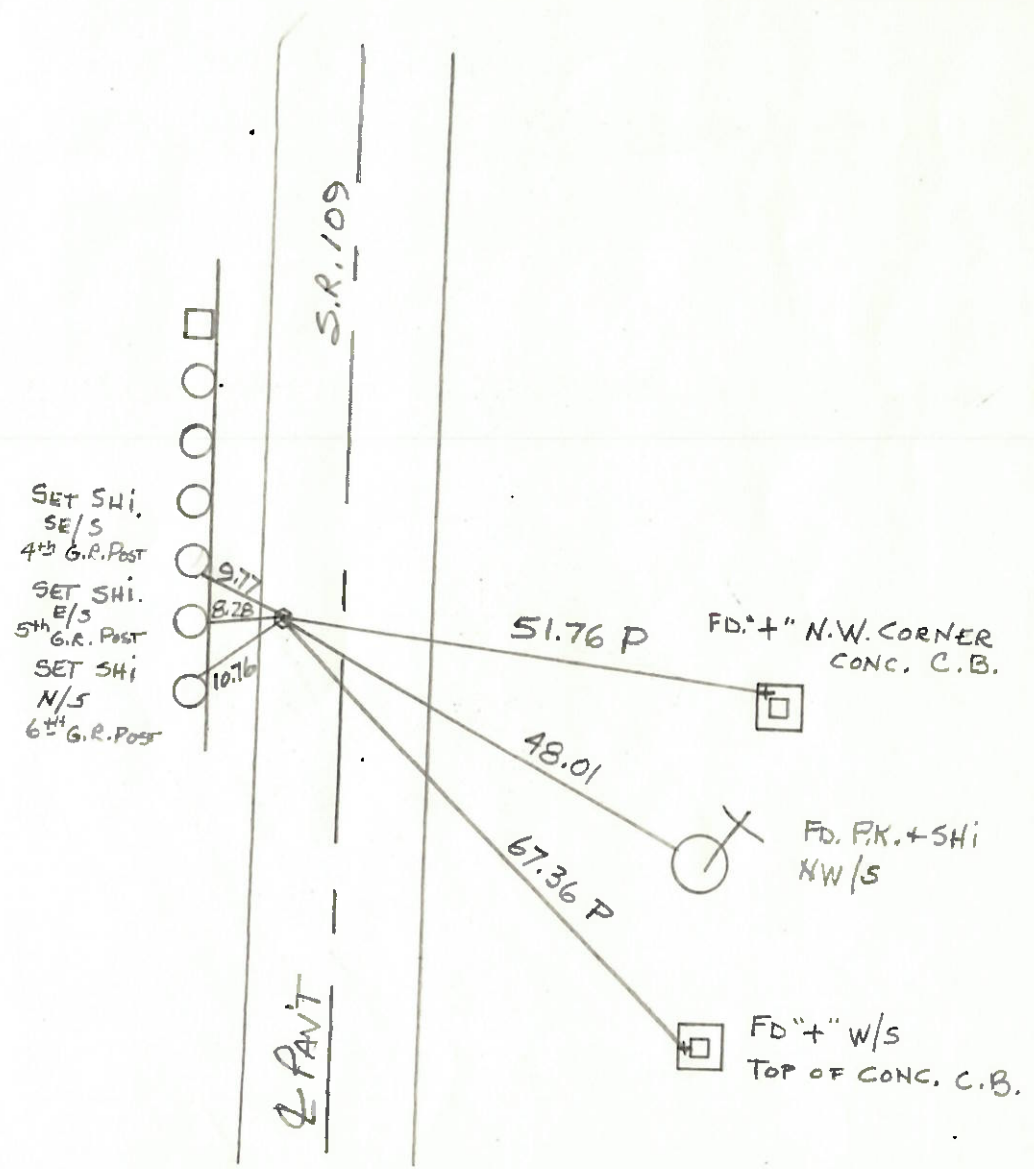
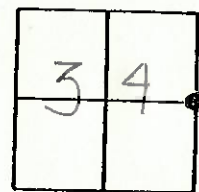
TYPE MONUMENT L.G. P.R. SPK.

ON SURFACE - BELOW 6.5

LEFT - 0 PAV'T. - RIGHT 7.3

1.6 TO LT. EDGE PAVEMENT

S.L.M. 26+52



OD.O.T. DISTRICT 2 SURVEY OFFICE

SHEET _____ OF _____

County HENRY S.R. 109

Date MARCH 10, 83

Township MARION

Weather P. CLEAR

Section 34

Temp. +35°

T3N, R7E

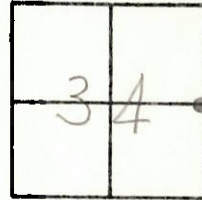
Personnel HOFFMAN

LOEHRKE

HOUSEHOLDER

BARNHISEL

2



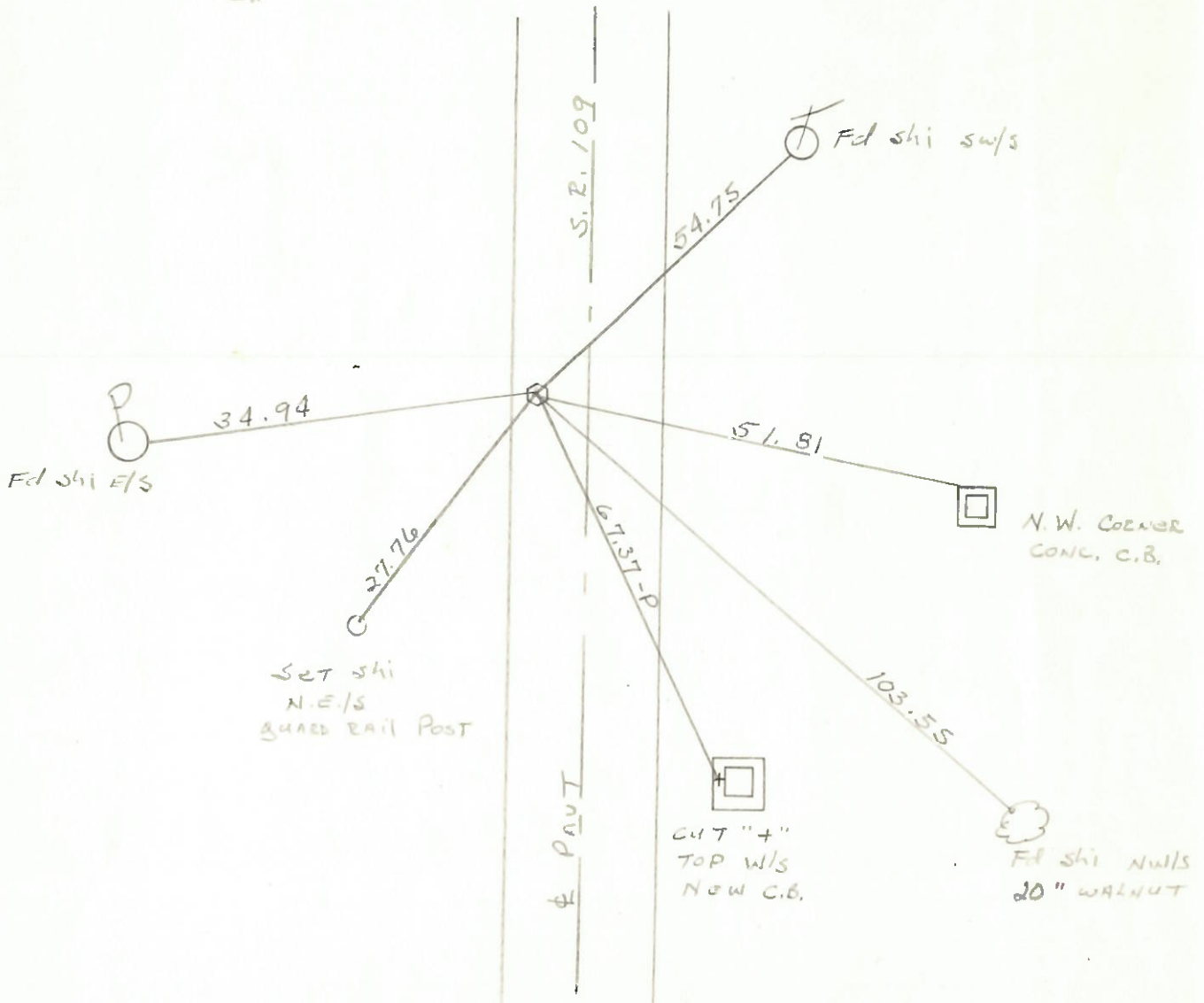
Fd R.R. SPK @ SURFACE

6.8' LT. & PAUT

2.0' TO W.E.P.

15.6' TO F.E.P.

S.L.M. Sta. 26+38



QDOT. DISTRICT 2 SURVEY OFFICE

Sht. 1 of 8

County HENRY S.R. 109

Date 5-21-79

Township MARION

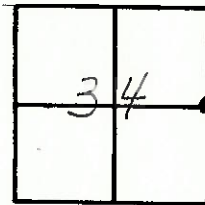
Weather CLEAR

Section E 1/4 Post SEC. 34

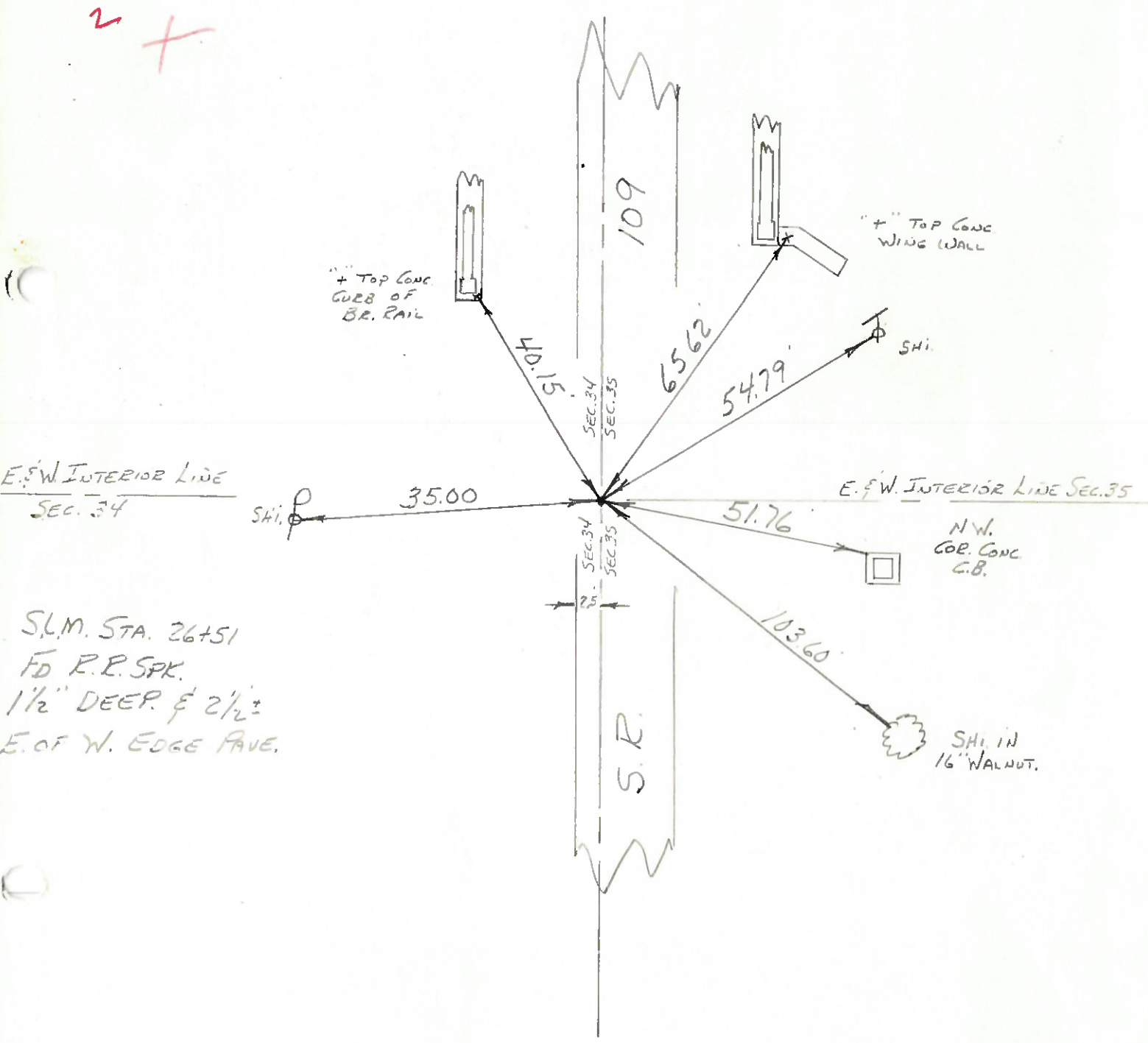
Temp. +62°

T3N, R7E

Personnel BURNSIDE
SMITH
BOWERS
KNAPE
MEAD



2 +



S.L.M. STA. 26+51
 FD R.R. SPK.
 1 1/2" DEEP & 2 1/2"
 E. OF W. EDGE PAVE.